



MONTEREY PENINSULA
COLLEGE

Education Master Plan

2012-2017

Clear Directions

Celine Pinet
Vice President for Academic Affairs
Monterey Peninsula College

EMP Committee Members

- Andres Durstenfeld, Instructor, Biology
- Anita Johnson, Instructor, English
- Celine Pinet, Vice President for Academic Affairs
- Damanjit Singh, Instructor, CSIS
- Diane Boynton, Division Chair, Humanities
- Joshua Gess, Student Representative, ASMPC
- Kathleen Clark, Instructor, COOP
- Robin Venuti, Director of the MPC Foundation
- Rosaleen Ryan, Director of Institutional Research
- Roseann Erwin, LTC Circulation Desk Coordinator
- Todd Ritsema, Instructor, Chemistry

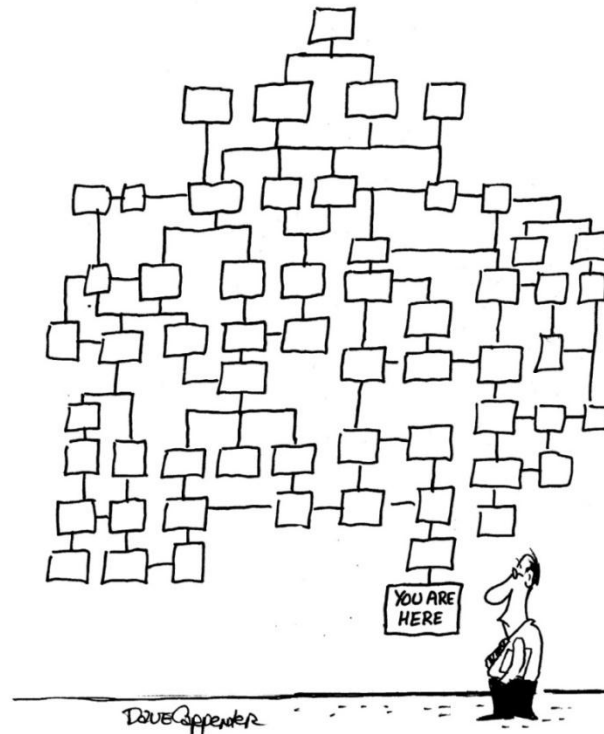
EMP Components

- Purpose and Process
- Mission, Values and Goals
- Environmental Scan:
 - Community Data
 - Monterey Peninsula College
 - State and Federal Mandates
- Strategic Plan



Purpose of EMP: Why plan?

Planning moves us forward – it gives us clear directions



Purpose
and Process

Mission,
Values &
Goals

Community
Data

Monterey
Peninsula
College

State &
Federal
Mandates

Strategic
Plan

Purpose of EMP: Why plan?

Planning leads to:

- Exploring new horizons
- Pinpointing gaps
- Responding to change
- Identifying opportunities
- Daring to dream

Unless we explore new horizons, we will never grow



Process and Timeline

Fall 2011

Departments and Student Service areas draft unit plans

President's town hall meeting on the Education Master Plan

Spring 2012

Committee gathered background information and drafted the plan

Draft presented to the President & Vice Presidents

APRIL: Study sessions

APRIL/MAY: Shared Governance Review: AAAG, SSAG, ASAG, Academic Senate, College Council

Summer/Fall 2012

MAY/JUNE: Approval by College President. Approval by Board of Trustees.

SEPTEMBER and on:

- Fold into Component Goals Develop Action Plans
- Develop 2013-14 Schedule
- Develop other institutional plans

Purpose and Process

Mission, Values & Goals

Community Data

Monterey Peninsula College

State & Federal Mandates

Strategic Plan

Mission

The state has directed California community college to make **transfer, career, and basic skills education** priorities.

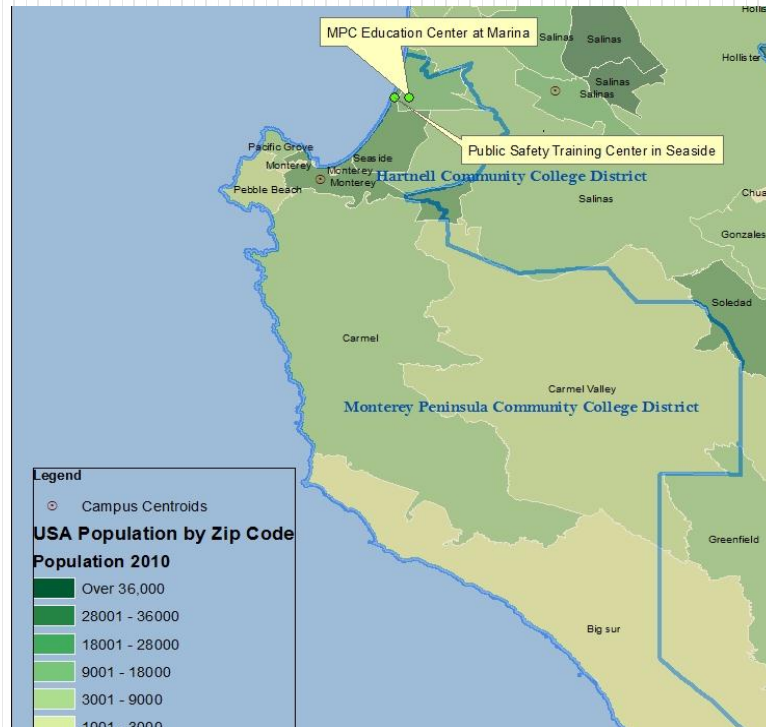
California Community College Student Success Task Force Recommendations Final Report, January 2012

- MPC uses its resources to support **transfer, career and basic skills instruction**
- Cognizant of its own demographics, MPC also seeks to develop life-long learning opportunities



Scan: Community Data

MPC District



Purpose
and Process

Mission,
Values &
Goals

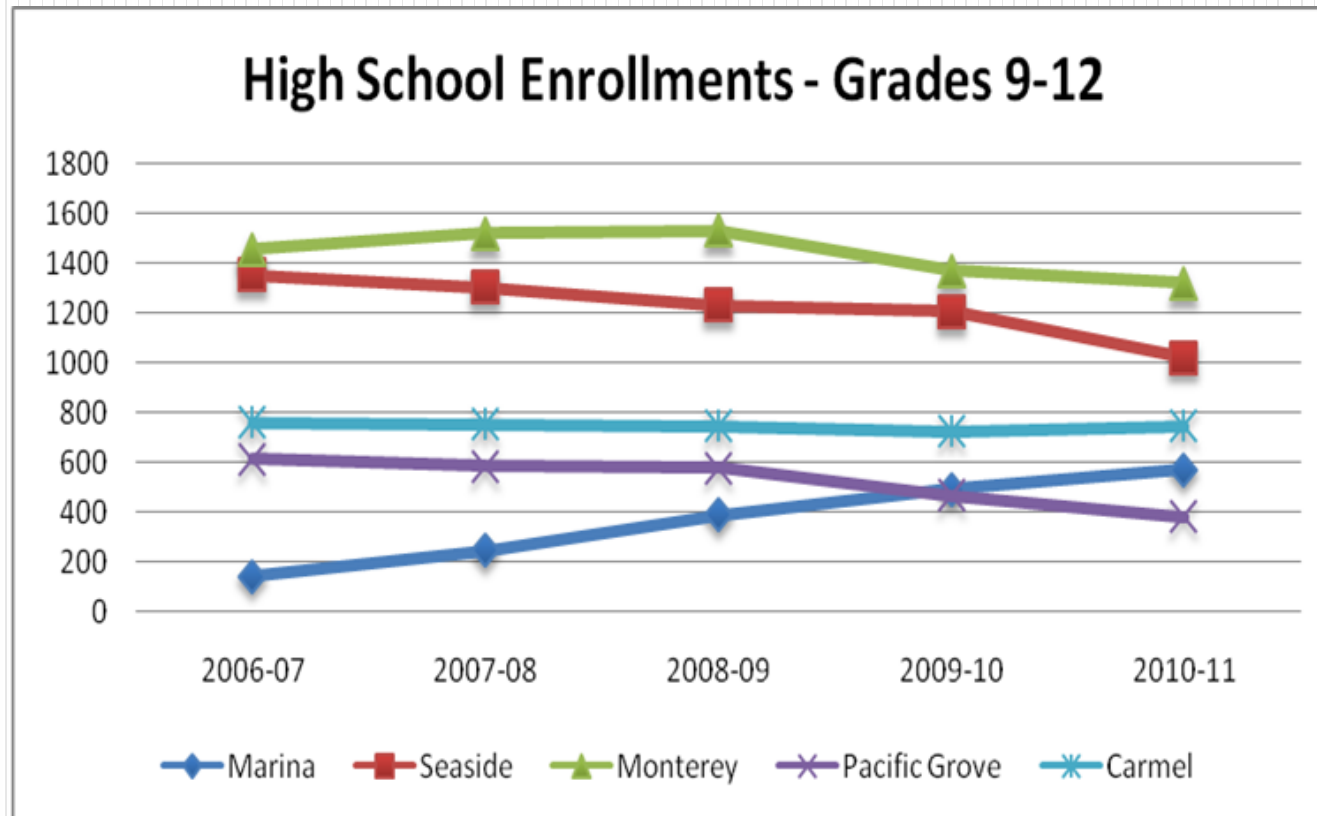
Community
Data

Monterey
Peninsula
College

State &
Federal
Mandates

Strategic
Plan

Scan: Community Data



Purpose
and Process

Mission,
Values &
Goals

Community
Data

Monterey
Peninsula
College

State &
Federal
Mandates

Strategic
Plan

Scan: Community Data

Two diverse populations on the peninsula:

1. Predominantly older population in the south, with over 50% of adults having a baccalaureate degree or higher in Carmel and Pebble Beach
2. Younger, more ethnically diverse in the north
 - Fewer than 20% of residents of Marina and Seaside have baccalaureate degrees
 - Nearly 30% of adults in Marina and Seaside do not have a high school diploma



Scan: Community Data

Economic characteristics of Monterey County

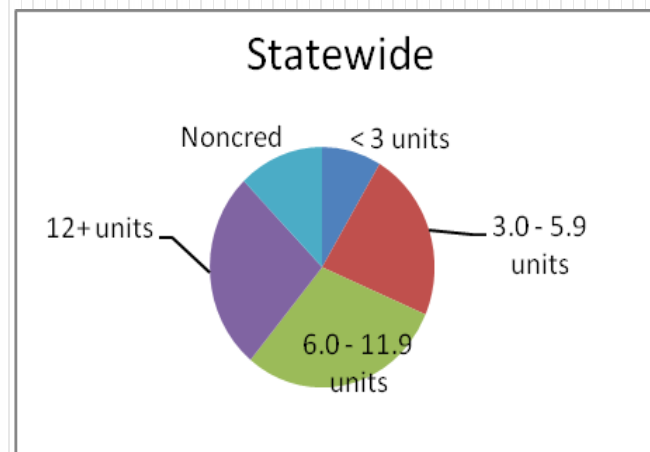
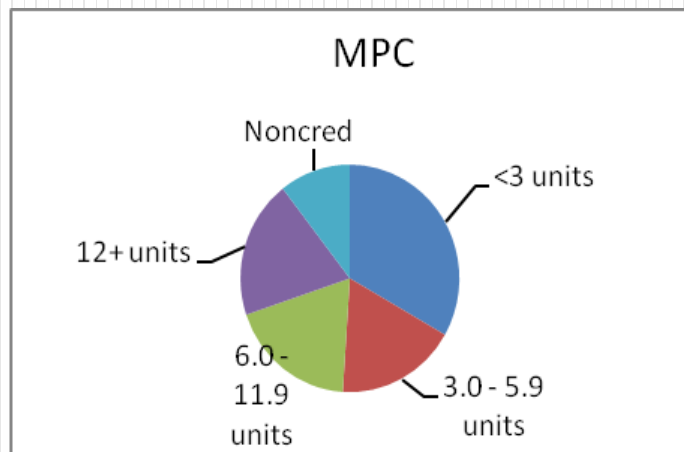
- Major industries:
 - Tourism
 - Agriculture
 - The military
- Ford Ord base redevelopment provided public safety training opportunities
- Major employers:
 - Community Hospital of the Monterey Peninsula (CHOMP)
 - Naval Postgraduate School (NPS)
 - Pebble Beach Company and Resorts
 - The U.S. Defense Department



Scan: MPC in Spring 2011

Full time versus part time students:

- At MPC, 19.8% of students attended full-time
- Many MPC students enrolled in only 3 units at a time
- At CCC, 26.6% of students attended full-time



Purpose
and Process

Mission,
Values &
Goals

Community
Data

Monterey
Peninsula
College

State &
Federal
Mandates

Strategic
Plan

Scan: MPC in Spring 2011

CCC: 8.1% of students have a baccalaureate degree or higher

MPC: 26.5% of students have a baccalaureate degree or higher
21.6% of students declare lifelong learning as their educational goal



Scan: MPC in Spring 2011

Apportionment

- Overall apportionment at MPC has decreased in the past 3 years
- At the same time, apportionment generated by distance education has almost doubled

Distance Education: Alternative academic pathway and access for an increasingly tech-savvy, nontraditional, and mobile student population



State and Federal Mandates

- Student Success Task Force recommendations
- Accreditation recommendations
 - *Student Learning Outcomes, MPC's Response to Recommendations 1-3*
 - *Distance Education: MPC's Response to Recommendation 4*
- Student Transfer Achievement Reform Act – SB 1440
- Implementing Title 5 changes in Repeatability
- Basic Skills students needs
- Gathering information about CTE programs



Challenges and Opportunities

- State economy and community college budgets have decreased
- Student success and repeatability regulations will change how we serve lifelong learners
- Traditional student base is down... except in the northern part of our district
- Distance education student base is increasing
- International student base could increase
- Basic skills still a critical need for many students

Challenges and Opportunities

- The Education Center in Marina and the Public Safety Training Center in Seaside are providing new opportunities to serve the community
- CTE opportunities relevant to employment needs are being explored
- Two primary themes, staffing and technology needs, emerged from Program Review activities

Question

Given the College's mission, values and goals,
our current environment,
and state and federal mandates,
what other directions should the college
consider exploring aside from those already stated
in the strategic goals?