



MONTEREY PENINSULA
College

mpc.edu

FALL 2023

CLASS SCHEDULE



Your Path, Our Passion

**Monterey Peninsula College
Governing Board of Trustees:**

Ms. Rosalyn Green, Chair - Area 1
Mrs. Libby Downey, Vice Chair - Area 3
Ms. Yuri Anderson, Trustee - Area 2
Ms. Debeliah "Debbie" Anthony,
Trustee - Area 4
Dr. Loren Steck, Vice Chair - Area 5
Student Trustee

Monterey Peninsula College

is a community college accredited by the Western Association of Schools and Colleges. The college is open to high school graduates and all others 18 years of age or older who may profitably pursue a course of study. Students in grades 6-12 may attend with written approval from their school principal and their parent(s) prior to registering. Students in grades 6-8 need additional approval from the Dean of Student Services.

**Call Admissions & Records at
(831) 646-4002 or email
admissions@mpc.edu
for registration information.**

All Monterey Peninsula College written publications will be made available in alternative formats (print, Braille, audiotope, or e-text). Requests for alternate media should be made to Access Resource Center at (831) 646-4070.

MPC Smoking Policy:

The use of tobacco – to include smoking and/or chewing any form of tobacco – is only permitted in designated parking lots.
(MPC Board Policy #3570)

Campus Welcome

Fall 2023 at MPC

Welcome to Monterey Peninsula College (MPC), a vibrant institution of higher learning offering exceptional educational opportunities at our campus in Monterey, the Education Center at Marina, the Public Safety Training Center in Seaside, online, and locations throughout our district.

Our dedicated Governing Board of Trustees and excellent faculty and staff are committed to fostering an equitable, inclusive, respectful, and supportive community dedicated to your success. Whether your goal is to earn a certificate or an associate degree, transfer to a four-year university, update your skills, advance your career, or enrich your personal life, MPC has the programs, courses, and student support services to help you achieve it.

Wherever you are on your educational path, MPC will help you take the next step toward success.

Otoño 2023 en Monterey Peninsula College

Bienvenidos al Colegio de la Península de Monterey (MPC), un colegio vibrante de educación. MPC ofrece oportunidades excepcionales de educación en nuestras localidades en Monterey, Centro Educativo de Marina, Centro de Entrenamiento de Seguridad Pública, y en línea.

Con una educación de alto nivel, tú puedes transformar tu vida personal y profesional. Si tu meta es avanzar tu educación, recibir un certificado, un diploma asociado, transferirte a una universidad, mejorar tus habilidades, recibir entrenamiento para una nueva carrera, o enriquecer tu vida personal, MPC está aquí para ayudarte a obtenerlo.

En lo que necesites, MPC te ayudará a tomar el siguiente paso a tu éxito.

WE PROMISE!

FREE tuition for first time college students

Step
1

Apply to MPC

Complete an online application for admission to MPC through CCC Apply.

Step
2

Apply for Financial Aid

Complete the Free Application for Federal Student Aid (FAFSA), or the California Dream Act Application.

Step
3

Meet an MPC counselor

Complete your educational plan, and select an academic pathway.

Step
4

Enroll Full-time at MPC

Register for full-time classes for the Fall and Spring semester to keep your MPC Promise.



www.mpc.edu/financialaid

** Open to all graduates from CA high schools or first-time college students. Must be a full-time CA resident.*

Calendar of Important Dates

Fall Session 2023

August 21 to December 16, 2023

April 19	Priority registration begins
May 1	Open registration
August 20	Last day to register through WebReg without an add code
August 21	Classes begin
August 21 - September 2	Late registration – add codes required for registration
September 2	Last day to drop semester-length courses and be eligible for a refund
September 2	Last day to add a semester-length course with an add code
September 4	Last day to drop semester-length courses without a “W” grade
September 4	HOLIDAY: Labor Day
September 5	Census Day
September 16	Last day to request pass/no pass grade option for semester-length courses
September 22	HOLIDAY: Native American Day Observance
November 1	Graduation application deadline
November 8	Last date to drop semester-length courses and receive “W” grade
November 10	HOLIDAY: Veterans Day
November 20-22	Fall Break
November 23-25	HOLIDAY: Thanksgiving
December 11 - 16	Final Examinations
December 16	End of semester
December 22 - January 1	Holiday: Winter Break

Information: (831) 646-4000

Admission & Records:

(831) 646-4002 or
admissions@mpc.edu

TTY: (831) 645-1319

Web Registration (WebReg):

www.mpc.edu

Campus Security:

(831) 646-4099

Counseling:

(831) 646-4020

Assessment Center:

(831) 646-4027

Child Development Center:

(831) 646-4066

Bookstore:

(831) 657-4680

Library:

(831) 646-4095

Marina Education Center:

(831) 646-4850

MPC Public Safety

Training Center:

(831) 646-4240

Financial Aid:

(831) 646-4030

Schedule Changes

Adds and/or Drops can be made through WebReg 24 hours a day online.

If course registration is not completed before the term begins, students must attend class, request an add code from the instructor and use WebReg to register during the late registration period.

STUDENT SERVICES:

Admissions & Records Office
(831) 646-4002

www.mpc.edu/admissions

When to Register

Registering for MPC classes is easy! It is recommended that you register as early as possible to get the classes that you want.

Register online through the student portal (WebReg) at www.mpc.edu open 24 hours per day. Computers and WebReg assistance available in the Admissions & Records office, located in the Student Services building.

Priority Registration

CONTINUING STUDENTS are students enrolled at MPC during Spring 2023

RETURNING STUDENTS are students who enrolled at MPC previously, but not in Spring 2023.

NEW AND NEW TRANSFER STUDENTS are students who have never enrolled at MPC.

DUAL ENROLLMENT STUDENTS are students who are currently in grades 6-12.

PRIORITY	GROUP	PRIORITY DATE
Priority 1	Active Military, Veterans, Foster Youth, Homeless Youth, ARC, EOPS & CalWORKS. Students must be either continuing MPC students in good standing ¹ (up to 99.9 units ²) or fully matriculated ³ if new or returning	April 19
Priority 2	Student Athletes, ASMPCC Officers and students in the following programs: First Year Experience, Teacher Pathway Program, Umoja, and TRIO. Students must be either continuing MPC students in good standing ¹ (up to 99.9 units ²) or fully matriculated ³ if new or returning	April 21
Priority 3	Continuing MPC students in good standing ¹ with 30.0-99.9 units in progress and on file	April 24
Priority 4	Continuing MPC students in good standing ¹ with 0.0-29.5 units in progress and on file	April 26
Priority 5	New fully matriculated ³ students	April 28
Open Registration	Open Registration for all other New and Returning students, dual enrolled students (grades 6-12), and continuing MPC students with 99.9+ units in progress and on file	May 1

¹ **In good standing:** student who is NOT on academic or progress dismissal or who is not on any probation for the last two consecutive semesters (Foster Youth will not lose priority and need to be manually adjusted)

² **100 unit:** once a student reaches 100 units, he/she loses priority limit includes only degree applicable units (MPC courses numbered 1-299)

³ **Fully Matriculated:** Student has completed Assessment, Orientation, and has an Education Plan on file for the term priority registration is for.

Late Registration

August 21 - September 2, 2023

Attend the first class, request an Add Code from the instructor and register using WebReg. Need assistance?
Please visit Admissions & Records in the Student Services Building or call **(831) 646-4002**.

Please note: There are many drawbacks to registering late. Classes would have already begun; the classes you want may already be filled; and counseling will be limited. So register early!

Steps for New Students

New students should complete each of the following steps in order to be cleared for registration.

STEP 1. APPLICATION

Complete application online at www.mpc.edu:

1. Click on “**Apply for Admission**”.
2. Follow the instructions on CCCApply to submit an application.

STEP 2. FINANCIAL AID (OPTIONAL)

Students who need assistance paying their fees are encouraged to submit the FAFSA (fafsa.ed.gov) or DREAM Act (dream.csac.ca.gov) application before they register for classes.

See page 8 for more Financial Aid information.

STEP 3. ASSESSMENT & PLACEMENT

Students receive English & math placement recommendations within five minutes of completing the Application for Admission. Recommendations can be adjusted using Guided Self Placement and answering questions regarding comfort levels with the concepts and skills necessary for success in English as a Second Language and transfer-level English and/or math coursework. Please see our website for the most current information and procedures. See assessment information on our website at www.mpc.edu/assessment or call (831) 646-4027.

STEP 4. ORIENTATION

Choose one of the following:

- A) Register for PERS 10, **OR**
- B) Complete the orientation online or in person. Please review the following website: www.mpc.edu/orientation or call (831) 646-4845.

STEP 5. COUNSELING/ADVISEMENT (EDUCATION PLAN)

Choose one of the following:

- A) Complete the Education Plan online at: www.mpc.edu/counseling, **OR**
- B) Complete the Education Plan with a counselor. Call (831) 646-4020 for an appointment or make your appointment online through WebReg.

STEP 6. REGISTRATION

Register for classes online, via WebReg at www.mpc.edu

Your **ONLINE** education is just a *click away!*

MPC has something for *everyone* and online classes for *all* types of learners!

Looking for convenience and flexibility to fit a busy schedule?
- Learn on your own time with an asynchronous class.

Looking for more human interaction and engagement?
- Try a synchronous class. Meet online on a specific schedule just like you do on campus!

Launch *your* future by enrolling in one of MPC's engaging online courses today!

www.mpc.edu/onlinecourses



Additional Registration Information

Students who have been dismissed from Monterey Peninsula College: Students must petition for readmission through the Academic Council. Check your petition status on WebReg 48 hours after Academic Council review (2nd and 4th Tuesdays).

Registration in more than 18 units: Students must have counselor approval if registering for more than 18 units in a semester.

U.S. Military Dependents using nonresident fee exemption: Signatures are required on the U.S. Military Dependent Form. Registration fees are the responsibility of the student unless the form is submitted to the Admissions & Records Office within the first two weeks of the term.

International Students: All students on F-1 or M-1 visas and students not possessing permanent resident visas: Approval from International Student Program office is required.

6th-12th Grade Students: Students in grades 6-12 and who are at least 12 years of age must complete an Application for Admission and a Dual Enrollment Form. Registration is permitted after both forms are completed and submitted to the Admissions & Records Office. Students in grades 6-8 must have additional approval from the Dean of Student Services. Call (831) 645-1377 to schedule an appointment.

Fall 2023 Cost and Payment Information

Course Fees

Enrollment Fee	\$46 per unit
Nonresident Fee*	\$364 per unit
Instructional Material Fee	Varies

Optional Fees

Child Development Center Donation	\$3
Daily Parking Permit	\$3
Annual Parking Permit	\$95
Semester Parking Permit	\$53

Payment

Students may log into their WebReg portal and pay fees. Additionally, fees may be paid in person at the Fiscal Services Office located in the Administration Building.

*Nonresident and international students are charged both enrollment and nonresident fees per unit for course registration.

In addition, international (F1 visa) students may have other fees. Please visit: www.mpc.edu/internationalstudents for more information.

Term/Session Fees

Health Fee	\$20
Student Center Use Fee	\$10
Student Body Fee	\$10
Student Representative Fee	\$2

As per the college catalog, all fees and tuition charges are subject to change without prior notification.

For more detailed information on current fees, waivers, and refunds please visit: www.mpc.edu/admissions/fees-payments-refunds

WebReg (Student Portal)

Students register for classes through their student portal (WebReg). Please see the instructions to the right.

WebReg Hours:

www.mpc.edu
24 hours per day

WebReg Help Line Hours:

Monday-Thursday: 9:00 am - 4:00 pm
Friday: 9:00 am - 12:00 pm
Call (831) 646-4002

Guidelines: Complete the worksheet on the right of this page before logging in. Have a list of alternate courses, as some of the classes may be closed.

NOTE: *If you were not registered at MPC in the previous term, an application must be submitted before registering.*

If you have changed your mailing address, telephone number and/or email address, update the information on WebReg.

The fastest, most secure way to pay for classes is through WebReg with a VISA or MasterCard. Need an alternative? There is a drop box outside the Administration Building to drop off payments.

Computers and WebReg assistance are available at the Admissions & Records Office in the Student Services Building.

Priority registration for Fall classes begins April 19, 2023

WebReg Helpline
(831) 646-4002

Registration Instructions:

1. Visit MPC's web site (**www.mpc.edu**).
2. Click on WebReg (at the top of the website).
3. For initial entry
 - **ID Number** (enter your SSN if you do not know your student ID number)
 - **PIN** (enter your 8-digit birth date (MMDDYYYY), no spaces)
4. Click Login.
5. If asked, update your PIN. It is your responsibility to remember the PIN you enter. From this point, you will be using this PIN when accessing your WebReg account.
6. You are now in your WebReg account. Update your information, if needed
PLEASE READ THE INSTRUCTIONS PRINTED ON EACH SCREEN
7. To register, click on Add/Drop/Register.
8. Select the semester/session in which you are registering.
9. Enter the 4-digit section number of the class(es) you wish to register into the "Enter Section Number box, click the "Add to Cart" button.

4 Digit Section #	Course	Units	Day(s)	Time

If the course you entered has the option of being taken for Letter Grade or P/NP (Pass/No Pass), you must now choose the grading option for which you wish to take the course. Click the option of your choice. Consult a counselor with questions.

The information related to the section number you entered appears. If this is the correct course and you wish to add additional courses, click "More Schedule Changes." Continue this process until you have requested all your courses.

If you have chosen the wrong course, click the shopping cart under the Remove button to drop the course.

10. After you have added all your desired courses, continue your registration by clicking on "Checkout".
11. The amount of money you owe for this transaction appears. **You must choose a payment option to finalize your registration.** If you clicked on payment to be made by check or cash, please complete the WebReg Payment Slip and submit your payment to Fiscal Services located in the Administration Building.
12. **When adding or dropping courses, ALWAYS PRINT YOUR RECEIPT.** This will be your record of the courses that you have added and/or dropped.
13. **If you need to make schedule changes at a later time,** you must FIRST drop the courses that you no longer wish to take and then add the classes that you want to take instead.
14. If you wish to purchase a Parking Permit, click Purchase Optional Fees. Parking permits will be mailed to students. Make sure your address is current in WebReg. Parking permits will begin to be mailed a few weeks before the term begins. Payment must be received before permits can be mailed out. So order and pay early!

Financial Aid Information

What is Financial Aid?

Financial aid is the money you receive from federal, state and local programs to help you meet the expenses (books, enrollment fee, food, rent, and transportation) of a college education. Student Financial Services provides different types of financial aid, such as grants, scholarships, work-study, and Direct Student Loans. **THE PRIMARY RESPONSIBILITY OF PAYING COLLEGE COSTS RESTS WITH YOU AND YOUR PARENTS.**

Who is eligible?

You do not need to be low-income to be eligible for financial aid, but you must demonstrate financial need. Your financial need is the difference between the cost of attendance and your expected family contribution. If you would like to apply for financial, APPLY NOW!

How do I apply?

To be considered for financial aid, you will need to complete the Free Application for Federal Student Aid (FAFSA) as soon as possible at <https://studentaid.gov> or the Dream Act Application at www.csac.ca.gov/dream_act.asp Student Financial Services will notify you of any required documents to complete your financial aid file or you can check your financial aid portal.

What are the General Eligibility Requirements?

In order to be eligible for federal, state, and institutional financial aid programs, a student must meet the following requirements:

- Must be accepted for admission and enrolled in an eligible academic program.
- Must have a High School Diploma or the equivalent (GED), or have received the California High School Proficiency Examination (CHSPE).
- Must be making satisfactory academic progress (SAP), whether or not you received financial aid.
- Must be a U.S. Citizen or eligible non-citizen with a valid Social Security Number for Federal aid.
- Must be in compliance with Selective Service Registration requirements.
- Must have resolved any drug conviction issues.
- Must not be in default on any Federal Loan Program or in repayment of any Federal Grant Programs.
- Must demonstrate financial need.

What is Financial Aid Satisfactory Academic Progress?

In order to show financial aid satisfactory academic progress during a given semester, you must:

- Earn cumulative grade point averages of at least 2.0 ("C" average);
- Complete 2/3 of the units you attempt cumulatively and complete your degree within the 150% maximum time frame (90 units attempted.)
- For the California College Promise Grant, maintain 2.0 GPA and complete 50% of attempted units each semester and overall.

What are my responsibilities as a student receiving Financial Aid?

As a student receiving financial aid, you are required to:

- Sign up for an MPC email account.
- Notify Student Financial Services of any change in your name, marital status, Social Security Number or income.
- Respond immediately to all correspondence sent to you by the Student Financial Services office, the Federal or State Student Aid Programs.
- Register for your classes, and complete all requirements for financial aid.
- Maintain satisfactory academic progress.

**Please note that it is the student's responsibility to pay any outstanding fees to MPC.*

What is the deadline to apply for Financial Aid?

The Free Application for Federal Student Aid (FAFSA) becomes available October 1st of every year. The application for financial aid has to be completed every year you are planning to attend school. There is a priority deadline which is March 2nd, so it is encouraged to apply early.

How can I check on my status?

There are a few ways to check on your status, They are:

- Visiting the financial aid office in the Student Service Building.
- Sending an email from your MPC email account.
- Through WebReg Portal under My Financial Aid.

When will I know if I am eligible for Financial Aid?

Once you have completed the financial aid application process, your eligibility for financial aid will be determined. Student Financial Services will email you a financial aid award letter. The award letter will inform you of the amount and types of financial aid you will be eligible to receive. If you are not eligible to receive financial aid, Student Financial Services will notify you by email as well.

What about fee waivers?

- **California College Promise Grant (CCPG):** This California-funded fee waiver program assists students who are classified as California residents with the mandatory Enrollment Fee.
- **CCPG Method A:** Assists students who are receiving public assistance, or are dependents of a parent on public assistance.
- **CCPG Method B:** Assists students as determined by the California Income Standards.
- **CCPG Method C:** Assists students who have completed the FAFSA and have \$1,104 in need. This is determined by Student Financial Services.
- **MPC PROMISE SCHOLARSHIP:** First Time-Full Time Students, First and Second Year Tuition Free! See website at: www.mpc.edu/promise.

HOW DO I APPLY FOR STUDENT LOANS?

To apply for student loans, you will need to complete the steps listed at: <https://www.mpc.edu/financial-aid/applications/direct-federal-student-loan>

Student Financial Services is located in the Student Services building. Please refer to the Financial Aid website for office hours. Contact Student Financial Services for assistance at **(831) 646-4030**, send an email to financialaid@mpc.edu, or visit our website at www.mpc.edu/financial-aid.

DID YOU KNOW YOU CAN EARN COLLEGE CREDITS WHILE YOU'RE STILL IN HIGH SCHOOL?

Choose your own classes when you enroll as a traditional dual enrollment student or take an MPC class offered at your high school through CCAP!



TRADITIONAL DUAL ENROLLMENT

Take college classes
on your own online or at MPC

CCAP COLLEGE & CAREER ACCESS PATHWAYS

Take college-level classes
at your high school



Learn more at www.mpc.edu/dual

WHAT'S YOUR PATH?

MPC's Career and Academic Pathways (CAPs) can help you explore our educational programs and find your ideal match.

Explore our pathways at www.mpc.edu/cap



Allied Health
Health, Wellness & Fitness



Business & Hospitality
Administration & Management



Public Safety & Education
Law Enforcement, Fire & Teaching



STEM
Science, Technology, Engineering & Math



Applied Technology
Technical Skills for the Workforce



Language & Communication
Expressing Ideas & Creating Connections



Social Sciences
Human Society & Social Relationships



Visual & Performing Arts
Art, Photography, Music & Theatre



Start in the summer & set yourself up for success this fall!

This 2-week program is designed to help first year college students succeed by building critical skills, developing confidence, and connecting students with a support system to ensure their success. All bridge programs include dedicated counselors, coaching mentors, and tutors.

Jump Start Dates

July 17 - July 28

For more information visit: www.mpc.edu/jumpstart

SECTION	DAYS	TIME	INSTRUCTOR	ROOM	UNITS	SECTION	DAYS	TIME	INSTRUCTOR	ROOM	UNITS	SECTION	DAYS	TIME	INSTRUCTOR	ROOM	UNITS
---------	------	------	------------	------	-------	---------	------	------	------------	------	-------	---------	------	------	------------	------	-------

Adapted Physical Education

ADPE 8	INTRODUCTION TO ADAPTED PHYSICAL EDUCATION																
0123	TTh	12:30pm-1:35pm	Ventimilia S	DA104	0.5												
		(09/15-12/01)															
ADPE 9	ADAPTED PERSONAL FITNESS																
0124	MTWThF	9:30am-10:20am	Ventimilia S	DA104	1.5												
		(08/21-12/15)															
ADPE 10	ADAPTED WEIGHT TRAINING																
0125	MW	11:00am-11:50am	Ventimilia S	DA104	1.0												
	& F	9:30am-10:35am	Ventimilia S	DA104													
		(08/21-12/15)															
ADPE 13	PHYSICAL EDUCATION: ADAPTED																
0126	MTWTh	8:00am-8:50am	Ventimilia S	DA104	1.5												
	& F	8:00am-9:05am	Ventimilia S	DA104													
		(08/21-12/15)															
ADPE 16	ADAPTED FLEXIBILITY AND MOVEMENT TECHNIQUES																
0128	TTh	11:00am-12:20pm	Ventimilia S	DA104	1.0												
		(08/22-12/14)															

Administration of Justice

ADMJ 2	INTRODUCTION TO ADMINISTRATION OF JUSTICE																
0001		6h 20m / week	Turner J.	Online	3.0												
		(08/21-10/14)															
0390	MW	11:00am-12:20pm	Staff	SS202	3.0												
		(08/21-12/13)															
0732	TF	8:30am-10:00am	McNamara M	MaHS	3.0												
ADMJ 3	COMMUNITY AND THE JUSTICE SYSTEM																
0178	T	11:00am-12:20pm	Turner J.	GA103	3.0												
	&	1h 30m / week	Turner J.	Online													
		(08/21-12/16)															
ADMJ 4	CONCEPTS OF CRIMINAL LAW																
0037		6h 20m / week	Turner J.	Online	3.0												
		(10/16-12/16)															
ADMJ 55	WRITING FOR CRIMINAL JUSTICE																
0043		3h 10m / week	McGuirk R	Online	3.0												
		(08/21-12/16)															

ADMJ 57 INTRODUCTION TO CORRECTIONS

0605	Th	11:00am-12:15pm	Turner J.	GA103	3.0												
	&	1h 35m / week	Turner J.	Online													
		(08/21-12/16)															

ADMJ 66 CRIMINAL INVESTIGATION

0355	W	6:30pm-9:35pm	Drown-Delfin	SPS106	3.0												
		(08/23-12/13)															

American Sign Language

SIGN 1A ELEMENTARY AMERICAN SIGN LANGUAGE I

0641	MW	10:30am-12:55pm	Stack K	Online	5.0												
		(08/21-12/13)															

SIGN 1AL ELEMENTARY AMERICAN SIGN LANGUAGE I LAB

0834	T	2:00pm-3:50pm	Stack K	HU106	1.0												
	& Th	2:00pm-3:50pm	Stack K	Online													
		(09/05-12/07)															
1409	T	2:00pm-2:50pm	Stack K	HU106	0.5												
	& Th	2:00pm-3:50pm	Stack K	Online													
		(09/05-12/07)															

Learn a Language at MPC



Learning another language gives you the opportunity to communicate with other communities, make connections and comparisons with other cultures, and understand yourself in different worlds.

SECTION	DAYS	TIME	INSTRUCTOR	ROOM	UNITS	SECTION	DAYS	TIME	INSTRUCTOR	ROOM	UNITS	SECTION	DAYS	TIME	INSTRUCTOR	ROOM	UNITS	
SIGN 1B	ELEMENTARY AMERICAN SIGN LANGUAGE II					0837	T	2:00pm-3:50pm	Stack K	HU106	1.0							
0289	MW	1:30pm-3:55pm	Stack K	HU106	5.0		& Th	2:00pm-3:50pm	Stack K	Online								
		(08/21-12/13)						(09/05-12/07)										
SIGN 1BL	ELEMENTARY AMERICAN SIGN LANGUAGE II LAB					SIGN 1DL	INTERMEDIATE AMERICAN SIGN LANGUAGE II LAB											
0835	T	2:00pm-3:50pm	Stack K	HU106	1.0	0303	T	2:00pm-2:50pm	Stack K	HU106	0.5							
	& Th	2:00pm-3:50pm	Stack K	Online			& Th	2:00pm-2:50pm	Stack K	Online								
		(09/05-12/07)						(09/05-12/07)										
1600	T	2:00pm-2:50pm	Stack K	HU106	0.5	0842	T	2:00pm-3:50pm	Stack K	HU106	1.0							
	& Th	2:00pm-3:50pm	Stack K	Online			Th	2:00pm-3:50pm	Stack K	Online	1.0							
		(09/05-12/07)						(09/05-12/07)										
SIGN 1CL	INTERMEDIATE AMERICAN SIGN LANGUAGE I LAB					SIGN 2A	INTERMEDIATE AMERICAN SIGN LANGUAGE											
0305	T	2:00pm-2:50pm	Stack K	HU106	0.5	0292	TTh	11:00am-1:25pm	Stack K	HU203	5.0							
	& Th	2:00pm-3:50pm	Stack K	Online				(08/22-12/14)										
		(09/05-12/07)				SIGN 10	STRUCTURE AND CULTURE OF AMERICAN SIGN LANGUAGE											
						0285		3h 10m / week	Stack K	Online	3.0							
								(08/21-12/16)										

Anatomy

ANAT 1 HUMAN ANATOMY WITH CADAVER LAB

0363	TTh	1:00pm-1:50pm	Ambaw A	LF101	4.0		& TTh	8:45am-10:35am	Ambaw A	LS211								
								2h 20m / week	Ambaw A	Online								
		(08/21-12/16)				0365	TTh	1:00pm-1:50pm	Ambaw A	LF101	4.0							
							& TTh	10:45am-12:35pm	Ambaw A	LS211								
								2h 20m / week	Ambaw A	Online								
		(08/21-12/16)				0380	MW	5:30pm-6:20pm	Faust H	LF101	4.0							
							& MW	2:15pm-5:20pm	Faust H	LS211								
		(08/21-12/13)				0381	MW	6:45pm-9:50pm	Ahmed O	LS211	4.0							
							& MW	5:30pm-6:20pm	Faust H	LF101								
		(08/21-12/13)				0383	Sat	9:00am-12:05pm	Patel R	LS211	4.0							
							& Sat	12:30pm-3:35pm	Patel R	LS211								
								2h 10m / week	Faust H	Online								
		(08/21-12/16)				0397		2h 10m/wk	Faust H	Online	4.0							
							& TTh	7:00pm-10:05pm	Ahmed O	LS211								
							& TTh	7:00pm-10:05pm	Faust H	LS211								
		(08/22-12/14)				0398	MW	8:00am-12:05pm	Faust H	LS211	4.0							
		(08/21-12/13)																

ANAT 5 HUMAN BIOLOGY

0007		6h 20m / week	Noel M	Online	4.0													
		(08/21-12/16)				0008	TTh	8:00am-9:20am	Craig H	LS107	4.0							
							& TTh	9:30am-10:50am	Craig H	LF101								
		(08/22-12/14)				0302	TTh	9:30am-10:50am	Craig H	LF101	4.0							
							& TTh	11:00am-12:20pm	Craig H	LS107								
		(08/22-12/14)				0372	TTh	12:30pm-1:50pm	Sanculi D	LS102	4.0							
							& TTh	2:00pm-3:20pm	Sanculi D	LS107								
		(08/22-12/14)																

Sections below offered at the MPC's Marina Education Center:

0968	Sat	9:30am-12:20pm	Bard D	MA104	4.0													
								3h 10m / week	Bard D	Online								
		(08/21-12/16)																

ANAT 70 ANATOMICAL PREPARATIONS

0832		3h 10m / week	Ambaw A	LS211	1.0													
								3h 10m / week	Faust H	LS211								
		(08/21-12/16)																

Academic Support

works together

to support

YOU!



MPC
tutoring

- ⚙️
MATH LEARNING CENTER
www.mpc.edu/mlc
- ⚙️
READING & WRITING CENTER
www.mpc.edu/rwc
- ⚙️
STEM CEL
www.mpc.edu/stemcel
- ⚙️
TUTORING & ACADEMIC SUCCESS CENTER
www.mpc.edu/tasc

Visit us on the Student Services Hub in Canvas

MPC STUDENTS RIDE THE MST BUS FOR FREE



**Go anywhere
they go!**

**Just show your
current I.D. for
unlimited access**

Check the bus schedule for the most current times on the MST website or app

GET READY TO TAKE AN **ONLINE** CLASS



Complete the online orientation course to prepare for success!

www.mpc.edu/online

SECTION	DAYS	TIME	INSTRUCTOR	ROOM	UNITS	SECTION	DAYS	TIME	INSTRUCTOR	ROOM	UNITS	SECTION	DAYS	TIME	INSTRUCTOR	ROOM	UNITS					
Anthropology						Art - Basics						ARCE 1B CERAMIC HANDBUILDING II										
ANTH 2	INTRODUCTION TO BIOLOGICAL ANTHROPOLOGY					ARTB 2	VISUAL FUNDAMENTALS: TWO-DIMENSIONAL DESIGN					0059	TTh	1:00pm-4:05pm (08/22-12/14)	Eisenbach D	AC107	3.0	0631	6h 20m / week (08/21-12/16)	Eisenbach D	Online	3.0
0015	MW	9:30am-10:50am (08/21-12/13)	Kary E	LF102	3.0	0468	MW	9:00am-12:05pm (08/21-12/13)	Gomez G	AC101	3.0	ARCE 1C CERAMIC HANDBUILDING III										
0016	TTh	12:30pm-1:50pm (08/22-12/14)	Kary E	SS202	3.0	ARTB 3	VISUAL FUNDAMENTALS: THREE-DIMENSIONAL DESIGN					0490	TTh	1:00pm-4:05pm (08/22-12/14)	Eisenbach D	AC107	3.0	0632	6h 20m / week (08/21-12/16)	Eisenbach D	Online	3.0
0489	3h 10m / week (08/21-12/16)	Kary E	Online	3.0	0783	6h 20m / week (08/21-12/16)	Quinonez	Online	3.0	ARCE 1D CERAMIC HANDBUILDING IV												
ANTH 2L	BIOLOGICAL ANTHROPOLOGY LABORATORY					ARTB 4	COLOR FUNDAMENTALS					0643	6h 20m / week (08/21-12/16)	Eisenbach D	Online	3.0	1543	TTh	1:00pm-4:05pm (08/22-12/14)	Eisenbach D	AC107	3.0
0018	M	11:00am-2:05pm (08/21-12/11)	Michaels G	SS205	1.0	0196	TTh	9:30am-12:35pm (08/22-12/14)	Lara C	AS101	3.0	ARCE 2A CERAMIC WHEEL THROWING I										
0150	3h 10m / week (08/21-12/16)	Michaels G	Online	1.0	ARTB 10	SURVEY OF THE ARTS					0067	MW	9:00am-12:05pm (08/21-12/13)	Tanous M	AC104	3.0	0471	TTh	6:00pm-9:05pm (08/22-12/14)	Tanous M	AC104	3.0
ANTH 4	INTRODUCTION TO CULTURAL ANTHROPOLOGY					0239	W	11:00am-12:20pm & 1h 30m / week (08/21-12/16)	Luke J	AS101	3.0	ARCE 2B CERAMIC WHEEL THROWING II										
0019	TTh	11:00am-12:20pm (08/22-12/14)	Kary E	SS205	3.0	ARCE 1 INTRODUCTION TO CERAMICS						0071	MW	9:00am-12:05pm (08/21-12/13)	Tanous M	AC104	3.0					
0020	3h 10m / week (08/21-12/16)	Kary E	Online	3.0	ARCE 1A	CERAMIC HANDBUILDING I					0476	TTh	6:00pm-9:05pm (08/22-12/14)	Tanous M	AC104	3.0						
ANTH 6	INTRODUCTION TO ARCHAEOLOGY AND PREHISTORY					0435	TTh	1:00pm-4:05pm (08/22-12/14)	Eisenbach D	AC107	3.0											
0021	MW	9:30am-10:50am (08/21-12/13)	Michaels G	SS205	3.0	0598	6h 20m / week (08/21-12/16)	Eisenbach D	Online	3.0												
ANTH 20	NATIVE PEOPLES OF NORTH AMERICA					ARCE 1 INTRODUCTION TO CERAMICS																
0122	Th	7:00pm-8:50pm & 2h 15m / week (09/25-12/16)	Arreola L	Online	3.0	0612	6h 20m / week (08/21-12/16)	Eisenbach D	Online	3.0												
			Arreola L	Online		1065	TTh	1:00pm-4:05pm (08/22-12/14)	Eisenbach D	AC107	3.0											

FYE

MONTEREY PENINSULA COLLEGE

FIRST YEAR

EXPERIENCE

Beginning a new educational journey can be exciting and overwhelming, so start out right by joining First Year Experience! This community-based program for students just starting college provides a supportive and caring environment with educational and career services.

- Bilingual Coordinators**
- Early Registration**
- Field Trips & Activities**
- Learning Community**
- Peer Mentors**
- Strategies for Success**

www.mpc.edu/fye

SECTION	DAYS	TIME	INSTRUCTOR	ROOM	UNITS	SECTION	DAYS	TIME	INSTRUCTOR	ROOM	UNITS	SECTION	DAYS	TIME	INSTRUCTOR	ROOM	UNITS
---------	------	------	------------	------	-------	---------	------	------	------------	------	-------	---------	------	------	------------	------	-------

studio artists

Express yourself and connect with a creative community on campus!

www.mpc.edu/creativearts

ARCE 2C CERAMIC WHEEL THROWING III

0081 MW 9:00am-12:05pm Tanous M AC104 3.0
(08/21-12/13)

0477 TTh 6:00pm-9:05pm Tanous M AC104 3.0
(08/22-12/14)

ARCE 2D CERAMIC WHEEL THROWING IV

0085 MW 9:00am-12:05pm Tanous M AC104 3.0
(08/21-12/13)

0115 TTh 6:00pm-9:05pm Tanous M AC104 3.0
(08/22-12/14)

ARCE 4A KILN-FORMED GLASS I

0127 F 9:00am-4:05pm Eisenbach D AC107 3.0
(08/25-12/15)

ARCE 4B KILN-FORMED GLASS II

0130 F 9:00am-4:05pm Eisenbach D AC107 3.0
(08/25-12/15)

ARCE 4C KILN-FORMED GLASS III

0132 F 9:00am-4:05pm Eisenbach D AC107 3.0
(08/25-12/15)

ARCE 4D KILN-FORMED GLASS IV

0153 F 9:00am-4:05pm Eisenbach D AC107 3.0
(08/25-12/15)

ARCE 8 ALTERNATIVE THROWING TECHNIQUES

0280 TTh 6:00pm-9:05pm Tanous M AC104 3.0
(08/22-12/14)

ARCE 11 CLAY AND GLASS

0171 F 9:00am-4:05pm Eisenbach D AC107 3.0
(08/25-12/15)

Art - Dimensional

ARTD 1A SCULPTURE I

0172 TTh 9:30am-12:35pm Quinonez AD101 3.0
(08/22-12/14)

ARTD 1B SCULPTURE II

0177 TTh 9:30am-12:35pm Quinonez AD101 3.0
(08/22-12/14)

ARTD 1C SCULPTURE III

0180 TTh 9:30am-12:35pm Quinonez AD101 3.0
(08/22-12/14)

ARTD 1D SCULPTURE IV

0188 TTh 9:30am-12:35pm Quinonez AD101 3.0
(08/22-12/14)

ARTD 7A 3D ARTS AND TECHNOLOGY I

0197 MW 6:00pm-9:05pm Quinonez AD101 3.0
(08/21-12/13)

ARTD 7B 3D ARTS AND TECHNOLOGY II

0199 MW 6:00pm-9:05pm Quinonez AD101 3.0
(08/21-12/13)

ARTD 40 INTRODUCTION TO JEWELRY AND METALSMITHING

0263 TTh 6:00pm-9:05pm Bettencourt AD107 3.0
(08/22-12/14)

ARTD 40A JEWELRY AND METAL ARTS I

0075 TTh 6:00pm-9:05pm Bettencourt AD107 3.0
(08/22-12/14)

ARTD 40B JEWELRY AND METAL ARTS II

0076 TTh 6:00pm-9:05pm Bettencourt AD107 3.0
(08/22-12/14)

ARTD 40C JEWELRY AND METAL ARTS III

0078 TTh 6:00pm-9:05pm Bettencourt AD107 3.0
(08/22-12/14)

ARTD 40D JEWELRY AND METAL ARTS IV

0079 TTh 6:00pm-9:05pm Bettencourt AD107 3.0
(08/22-12/14)

ARTD 44A METAL ARTS: ENAMELING I

0284 MW 1:00pm-4:05pm Bettencourt AD107 3.0
(08/21-12/13)

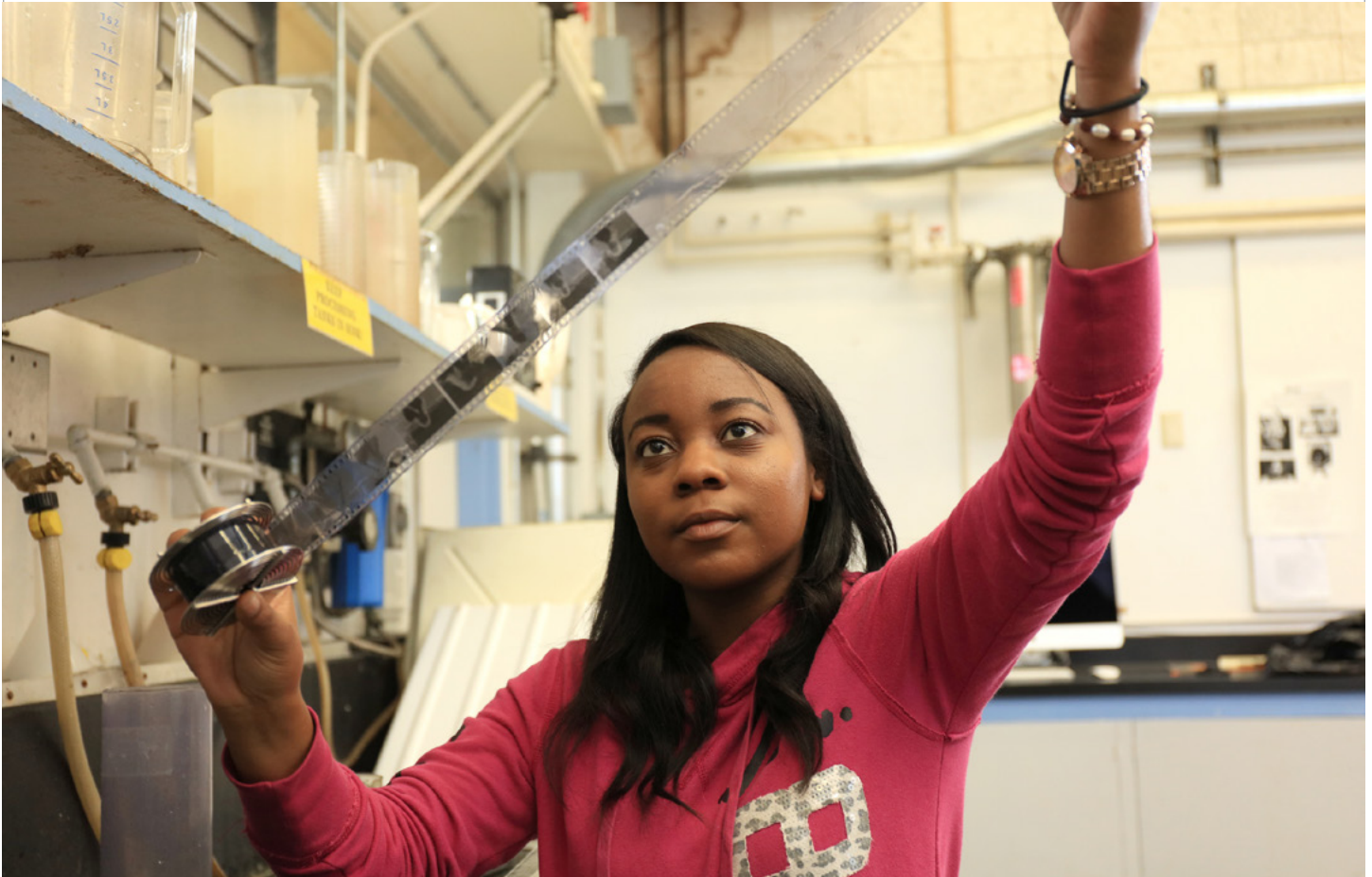
ARTD 44B METAL ARTS: ENAMELING II

0286 MW 1:00pm-4:05pm Bettencourt AD107 3.0
(08/21-12/13)

ARTD 55 JEWELRY: CHAIN AND RING MAKING

0295 F 9:00am-4:05pm Yoo L AD107 3.0
(08/25-12/15)

SECTION	DAYS	TIME	INSTRUCTOR	ROOM	UNITS	SECTION	DAYS	TIME	INSTRUCTOR	ROOM	UNITS	SECTION	DAYS	TIME	INSTRUCTOR	ROOM	UNITS
---------	------	------	------------	------	-------	---------	------	------	------------	------	-------	---------	------	------	------------	------	-------



Art - Graphics

ARTG 10 INTRODUCTION TO COMPUTERS FOR GRAPHIC ARTS

1045 TTh 9:00am-12:05pm Dagdigian J GA101 4.0
(08/22-12/14)

ARTG 11 INTRODUCTION TO PHOTOSHOP

0541 MW 6:00pm-9:05pm Wolf J GA101 4.0
(08/21-12/13)

ARTG 12 PAGE LAYOUT AND TYPOGRAPHY

0306 MW 9:00am-12:05pm Dagdigian J GA101 4.0
(08/21-12/13)

Art - History

ARTH 1 UNDERSTANDING ART

0991 3h 10m /week Madsen Online 3.0
(08/21-12/16)

ARTH 3 WESTERN ART I

0555 MW 9:30am-10:50am Madsen IC104 3.0
(08/21-12/13)

ARTH 8 SURVEY OF ASIAN ART

1281 MW 12:30pm-1:50pm Madsen IC104 3.0
(08/21-12/13)

Art - Photography

ARTP 10 INTRODUCTION TO PHOTOGRAPHY

0047 3h 10m /week Staff Online 3.0
(08/21-12/16)

ARTP 11A PHOTOGRAPHY I: BLACK AND WHITE

0707 TTh 6:00pm-8:35pm Staff IC106 3.0
(08/22-12/14)

ARTP 14 HISTORY OF PHOTOGRAPHY

0310 3h 10m /week Staff Online 3.0
(08/21-12/16)

ARTP 15 PORTRAITURE PHOTOGRAPHY

0519 TTh 1:00pm-4:05pm Staff IC106 3.0
(08/22-12/14)

Art - Studio

ARTS 10A DRAWING AND COMPOSITION I

0191 TTh 1:00pm-3:35pm Quinonez AC101 3.0
(08/22-12/14)

0704 MW 1:00pm-3:35pm Gomez G AC101 3.0
(08/21-12/13)

ARTS 10B INTERMEDIATE DRAWING

0705 MW 1:00pm-3:35pm Gomez G AC101 3.0
(08/21-12/13)

ARTS 12A FIGURE DRAWING I

0948 MW 9:00am-12:05pm Thorson C AS107 3.0
(08/21-12/13)

ARTS 12B FIGURE DRAWING II

0949 MW 9:00am-12:05pm Thorson C AS107 3.0
(08/21-12/13)

ARTS 12C FIGURE DRAWING III

0950 MW 9:00am-12:05pm Thorson C AS107 3.0
(08/21-12/13)

ARTS 12D FIGURE DRAWING IV

0951 MW 9:00am-12:05pm Thorson C AS107 3.0
(08/21-12/13)

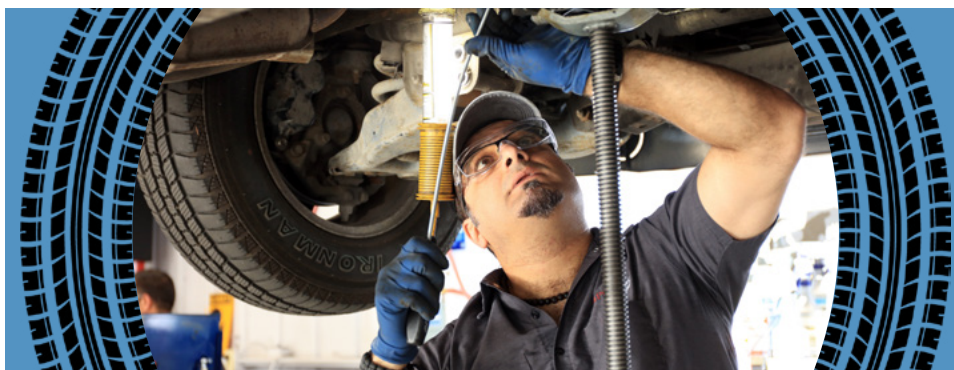
ARTS 30A MIXED MEDIA I

0716 MW 1:00pm-4:05pm Klein E AS101 3.0
(08/21-12/13)

ARTS 30B MIXED MEDIA II

0301 MW 1:00pm-4:05pm Klein E AS101 3.0
(08/21-12/13)

SECTION	DAYS	TIME	INSTRUCTOR	ROOM	UNITS	SECTION	DAYS	TIME	INSTRUCTOR	ROOM	UNITS	SECTION	DAYS	TIME	INSTRUCTOR	ROOM	UNITS						
ARTS 40A PAINTING I																							
0596	TTh	1:00pm-4:05pm (08/22-12/14)	Thorson C	AS107	3.0																		
ARTS 40B PAINTING II																							
0609	TTh	1:00pm-4:05pm (08/22-12/14)	Thorson C	AS107	3.0																		
ARTS 40C PAINTING III																							
1607	TTh	1:00pm-4:05pm (08/22-12/14)	Thorson C	AS107	3.0																		
ARTS 40D PAINTING IV																							
1540	TTh	1:00pm-4:05pm (08/22-12/14)	Thorson C	AS107	3.0																		
ARTS 60 INTRODUCTION TO PRINTMAKING																							
0613	MW	1:00pm-4:05pm (08/21-12/13)	Klein E	AS101	3.0																		
ARTS 62A RELIEF PRINTMAKING I																							
0262	MW	1:00pm-4:05pm (08/21-12/13)	Klein E	AS101	3.0																		
ARTS 62B RELIEF PRINTMAKING II																							
0296	MW	1:00pm-4:05pm (08/21-12/13)	Klein E	AS101	3.0																		



LEARN BY DOING

MPC's Automotive Technology program provides comprehensive training designed to prepare students for professional careers in the automotive service and repair industry.

- Earn high industry certification through our partnerships (Subaru & Mercedes Benz)
- Prepare for high tech careers in the automotive industry
- Learn valuable foundational skills

www.mpc.edu/auto

Art - Video/Cinema

ARTV 1 INTRODUCTION TO FILM/VIDEO

1576	3h 10m / week	Robbins	Online	3.0
------	---------------	---------	--------	-----

Astronomy

ASTR 10 INTRODUCTION TO ASTRONOMY

0083	TTh	11:00am-12:20pm (08/22-12/14)	Hickok E	LF103	3.0
0084	TTh	11:00am-12:20pm (08/22-12/14)	Hickok E	LF103	3.0

ASTR 10L INTRODUCTION TO ASTRONOMY LABORATORY

0088	W	10:00am-11:50am & 1h 10m / week (08/21-12/16)	Hickok E Hickok E	PS103 TBD	1.0
0089	W	12:00pm-1:50pm & 1h 10m / week (08/21-12/16)	Hickok E Hickok E	PS103 TBD	1.0

Athletics

ATHL 20.1 SKILL DEVELOPMENT FOR BASEBALL

0781	7h 45m / week (08/28-12/01)	Phillips D	BFIELD	2.0
0939	7h 45m / week (08/28-12/01)	Phillips D	BFIELD	2.0

ATHL 20.2 SKILL DEVELOPMENT FOR BASKETBALL - MEN

1326	5h 35m / week (08/21-09/29)	Spiering	PE201	0.5
------	--------------------------------	----------	-------	-----

ATHL 20.3 SKILL DEVELOPMENT FOR BASKETBALL - WOMEN

1334	5h 35m / week (08/21-09/29)	O'Hare	PE201	0.5
------	--------------------------------	--------	-------	-----

ATHL 20.6 SKILL DEVELOPMENT FOR SOFTBALL

0786	6h 20m / week (09/18-12/16)	Berg W	SFIELD	1.5
------	--------------------------------	--------	--------	-----

ATHL 20.9 SKILL DEVELOPMENT FOR TRACK AND FIELD

1287	6h 20m / week (08/21-12/16)	Cunningham N	TRACK	2.0
------	--------------------------------	--------------	-------	-----

ATHL 30.1 INTERCOLLEGIATE BASKETBALL: WOMEN

0788	8h 25m / week (10/02-12/08)	O'Hare	PE201	1.5
------	--------------------------------	--------	-------	-----

ATHL 30.3 INTERCOLLEGIATE VOLLEYBALL: WOMEN

0789	10h 35m / week (08/21-12/16)	Moore K	PE201	3.0
------	---------------------------------	---------	-------	-----

ATHL 31.1 INTERCOLLEGIATE FOOTBALL: MEN

0791	10h 35m / week (08/21-12/16)	Palmer R	FFIELD	3.0
------	---------------------------------	----------	--------	-----

ATHL 31.2 INTERCOLLEGIATE BASKETBALL: MEN

0792	8h 25m / week (10/02-12/08)	Spiering	PE201	1.5
------	--------------------------------	----------	-------	-----

ATHL 31.5 INTERCOLLEGIATE SOCCER: MEN

1148	10h 35m / week (08/21-12/16)	Cisneros M	FFIELD	3.0
------	---------------------------------	------------	--------	-----

ATHL 32.4 INTERCOLLEGIATE CROSS COUNTRY: WOMEN AND MEN

0129	10h 35m / week (08/21-12/16)	Cunningham N	TRACK	3.0
------	---------------------------------	--------------	-------	-----

ATHL 61A ELEMENTS OF FOOTBALL I

1609	2h 45m / week (08/28-11/17)	Palmer R	PE107	0.5
1610	2h 45m / week (08/28-11/17)	Palmer R	PE107	0.5

Automotive Technology

AUTO 100 INTRODUCTION TO AUTOMOTIVE TECHNOLOGY

1134	MTWTh 1:00pm-4:05pm & MTWTh 1:00pm-4:05pm (08/21-10/12)	Evans M Lawrence J	AT103 AT103	4.0
1509	MW 6:30pm-9:35pm (08/21-12/13)	Evans M	AT103	4.0

AUTO 101 ENGINE REPAIR

0092	MTWTh 8:00am-12:10pm AT103 4.0 (08/21-10/12)	Lawrence J		
------	---	------------	--	--

AUTO 102 BASIC AUTOMOTIVE ELECTRICITY AND ELECTRONICS

0093	F 8:00am-10:50am & 5h 15m / week (08/21-12/16)	Lawrence J Lawrence J	GA103 Online	4.0
------	--	--------------------------	-----------------	-----

SECTION	DAYS	TIME	INSTRUCTOR	ROOM	UNITS	SECTION	DAYS	TIME	INSTRUCTOR	ROOM	UNITS	SECTION	DAYS	TIME	INSTRUCTOR	ROOM	UNITS
AUTO 103 ENGINE PERFORMANCE						BIOL 31 INTRODUCTION TO ENVIRONMENTAL SCIENCE						Business					
0094	MTWTh	8:00am-11:05am	Lawrence J	AT103	4.5	0010	MW	8:00am-9:20am	Raskoff K	LS102	3.0	BUSI 1A FINANCIAL ACCOUNTING					
		(10/16-12/14)						(08/21-12/13)				0106	MW	11:00am-1:05pm	Mikkelsen	BMC204	4.0
AUTO 104 AUTOMOTIVE ELECTRICS						0105	3h 10m / week		Raskoff K	Online	3.0			(08/21-12/13)			
0984	TTh	1:00pm-5:05pm	Lawrence J	AT103	2.5			(08/21-12/16)				0107	4h 15m / week		Mikkelsen	Online	4.0
		(10/17-12/14)												(08/21-12/16)			
AUTO 162 HEATING, VENTILATION, AND AIR CONDITIONING TRADE EXPERIENCE						<i>Sections below offered at the MPC's Marina Education Center:</i>						0108	4h 15m / week		Mikkelsen	Online	4.0
0780	F	1:00pm-5:35pm	Lawrence J	AT103	2.0	0011	TTh	12:30pm-1:50pm	Staff	MA402	3.0			(08/21-12/16)			
		(08/25-12/15)						(08/22-12/14)									

Biology

BIOL 10 PRINCIPLES OF BIOLOGY					
0097	3h 10m / week		Kochevar R	Online	4.0
	& 3h 10m / week		Kochevar R	Online	
		(08/21-12/16)			
0114	MW	8:00am-8:50am	Gilbert P S	LF102	4.0
	& F	8:00am-9:05am	Gilbert P S	LF102	
	& M	9:00am-12:05pm	Gilbert P S	LS104	
		(08/21-12/15)			
1310	MW	8:00am-8:50am	Gilbert P S	LF102	4.0
	& F	8:00am-9:05am	Gilbert P S	LF102	
	& W	9:00am-12:05pm	Gilbert P S	LS104	
		(08/21-12/15)			
BIOL 13 MARINE BIOLOGY					
0350	MW	11:00am-12:20pm	Raskoff K	LS102	4.0
	& T	2:00pm-5:05pm	Raskoff K	LS104	
		(08/21-12/13)			
BIOL 22 CONCEPTS IN BIOLOGY II: DIVERSITY, ECOLOGY, AND EVOLUTION					
0099	MW	1:00pm-1:50pm	Gilbert P S	LS102	5.0
	& MW	1:00pm-1:50pm	Raskoff K	LS102	
	& F	1:00pm-2:05pm	Gilbert P S	LS102	
	& F	1:00pm-2:05pm	Raskoff K	LS102	
	& MW	2:00pm-5:05pm	Gilbert P S	LS101	
	& MW	2:00pm-5:05pm	Raskoff K	LS101	
		(08/21-12/15)			
0100	MW	1:00pm-1:50pm	Gilbert P S	LS102	5.0
	& MW	1:00pm-1:50pm	Raskoff K	LS102	
	& F	1:00pm-2:05pm	Gilbert P S	LS102	
	& F	1:00pm-2:05pm	Raskoff K	LS102	
	& TTh	9:30am-12:35pm	Gilbert P S	LS101	
	& TTh	9:30am-12:35pm	Raskoff K	LS101	
		(08/21-12/15)			
BIOL 25 APPLIED MICROBIOLOGY LECTURE					
0101	MW	8:30am-9:20am	Craig H	LF101	3.0
	& F	8:30am-9:35am	Craig H	LF101	
		(08/21-12/15)			
BIOL 26 APPLIED MICROBIOLOGY LABORATORY					
0102	MWF	10:00am-12:05pm	Craig H	LS201	1.0
		(08/21-10/13)			
1319	MWF	1:00pm-3:05pm	Craig H	LS201	1.0
		(08/21-10/13)			

START OR GROW *your* business TODAY!



Busi 20:
Introduction to Business

Busi 44:
Business Ownership/Mgmt.

Busi 46:
Entrepreneurial Mindset

Busi 49:
Professional Selling

Busi 50:
Introduction to Marketing

MPC Can Turn Your Dreams Into a Reality!

SECTION	DAYS	TIME	INSTRUCTOR	ROOM	UNITS	SECTION	DAYS	TIME	INSTRUCTOR	ROOM	UNITS	SECTION	DAYS	TIME	INSTRUCTOR	ROOM	UNITS
BUSI 1B MANAGERIAL ACCOUNTING						BUSI 62 PRINCIPLES OF INVESTMENT						<h2>Chemistry</h2>					
1023	TTh	11:00am-1:05pm	Mikkelsen	BMC204	4.0	1562	3h 10m / week		Peelman L	Online	3.0						
		(08/22-12/14)					(08/21-12/16)					0119	TTh	12:30pm-1:50pm	Turner R	LF102	5.0
1606	4h 15m / week		Mikkelsen	Online	4.0	BUSI 70 BUSINESS COMMUNICATION							& TTh	2:00pm-5:05pm	Turner R	PS206	
	(08/21-12/16)					1163	3h 10m / week		Kimm M	Online	3.0		(08/22-12/14)				
BUSI 18 BUSINESS LAW						BUSI 110 BUSINESS MATHEMATICS						0120					
0109	TTh	9:30am-10:50am	Castillo L	BMC204	3.0	1027	3h 10m / week		Sobotka	Online	3.0	WF	2:00pm-5:05pm	Garcia Garci	PS206	5.0	
		(08/22-12/14)					(08/21-12/16)					&	3h 10m / week	Turner R	Online		
0110	3h 10m / week		Castillo L	Online	3.0	BUSI 120A BASIC ACCOUNTING							(08/21-12/16)				
	(08/21-12/16)					1152	W	6:00pm-10:05pm	Roberts C	Online	4.0	0121	TTh	12:30pm-1:50pm	Turner R	LF102	5.0
0572	6h 20m / week		Castillo L	Online	3.0		(08/23-12/13)					& TTh	9:00am-12:05pm	Turner R	PS206		
	(10/16-12/16)					BUSI 120B QUICKBOOKS ONLINE ACCOUNTING SOFTWARE							(08/22-12/14)				
1024	3h 10m / week		Castillo L	Online	3.0	0597	3h 10m / week		Sobotka	Online	3.0	0671	9h 30m / week		Turner R	Online	5.0
	(08/21-12/16)						(08/21-12/16)						(08/21-12/16)				
BUSI 20 INTRODUCTION TO BUSINESS						<h2>Business Skills Center</h2>						CHEM 1B GENERAL CHEMISTRY II					
0111	W	6:30pm-8:20pm	Barrie B	BMC107	3.0							BUSC 109 KEYBOARDING FOR COMPUTERS					
	&	1h 10m / week	Barrie B	Online		0585	8h 25m / week		Walker J	Online	1.0		& MW	12:30pm-1:50pm	Rivera F	PS207	
	(08/21-12/16)						(08/28-10/07)						& W	2:00pm-5:05pm	Rivera F	PS202	
0445	3h 10m / week		Gravelle K	Online	3.0	1251	8h 25m / week		Walker J	Online	1.0	CHEM 2 FUNDAMENTAL CHEMISTRY					
	(08/21-12/16)					BUSC 140 COMPUTER APPLICATIONS - MICROSOFT OFFICE WORD						0131	T	2:00pm-4:50pm	Rivera F	PS202	4.0
1631	TTh	2:30pm-3:50pm	Barrie B	LF102	3.0	1246	6h 20m / week		Ramos J	Online	1.0		&	3h 10m / week	Rivera F	Online	
	(08/22-12/14)						(08/21-10/14)						(08/21-12/16)				
<i>Sections below offered at the MPC's Marina Education Center:</i>						BUSC 150 COMPUTER APPLICATIONS - MICROSOFT OFFICE EXCEL						0175					
0503	Th	12:30pm-1:50pm	Barrie B	MA401	3.0	1266	6h 20m / week		Walker J	Online	1.0	F	1:00pm-4:20pm	Bishop M	PS202	4.0	
	&	1h 30m / week	Barrie B	Online			(10/16-11/25)						&	3h 10m / week	Bishop M	Online	
	(08/21-12/16)					BUSC 160 COMPUTER APPLICATIONS - MICROSOFT OFFICE POWERPOINT							(08/21-12/16)				
BUSI 22 EFFECTIVE LEADERSHIP IN BUSINESS						BUSC 409 KEYBOARDING FOR COMPUTERS						CHEM 10 EVERYDAY CHEMISTRY					
0112	MW	9:30am-10:50am	Castillo L	BMC204	3.0	0045	8h 25m / week		Walker J	Online	0.0	0583	6h 20m / week		Ritsema T	Online	4.0
		(08/21-12/13)					(08/28-10/07)						(08/21-12/16)				
BUSI 24 BUSINESS ISSUES AND ETHICS						BUSC 440 COMPUTER APPLICATIONS: MICROSOFT OFFICE WORD						1322					
0113	3h 10m / week		Gravelle K	Online	3.0	0387	8h 25m / week		Walker J	Online	0.0	Th	2:00pm-4:50pm	Bishop M	PS202	4.0	
	(08/21-12/16)						(10/16-11/25)					&	7h 10m / week	Bishop M	Online		
BUSI 44 INTRODUCTION TO BUSINESS OWNERSHIP/MANAGEMENT						BUSC 450 COMPUTER APPLICATIONS: MICROSOFT OFFICE EXCEL						0135					
0116	M	11:00am-12:20pm	Barrie B	Online	3.0	0391	6h 20m / week		Ramos J	Online	0.0	MW	9:30am-10:50am	Ritsema T	BMC104	5.0	
	&	1h 35m / week	Barrie B	Online			(08/21-10/14)					& MW	11:00am-2:05pm	Ritsema T	PS203		
	(08/21-12/16)					BUSC 460 COMPUTER APPLICATIONS: MICROSOFT OFFICE POWERPOINT							(08/21-12/13)				
BUSI 46 ENTREPRENEURIAL MINDSET						BUSC 450 COMPUTER APPLICATIONS: MICROSOFT OFFICE EXCEL						CHEM 12A ORGANIC CHEMISTRY I					
0563	6h 20m / week		Barrie B	Online	3.0	0393	6h 20m / week		Walker J	Online	0.0	0136	MW	9:30am-10:50am	Ritsema T	BMC104	5.0
	(10/16-12/16)						(10/16-12/16)					& MW	2:30pm-5:35pm	Ritsema T	PS203		
BUSI 49 PROFESSIONAL SELLING						BUSC 460 COMPUTER APPLICATIONS: MICROSOFT OFFICE POWERPOINT						(08/21-12/13)					
0978	6h 20m / week		Barrie B	Online	3.0	0394	6h 20m / week		Ramos J	Online	0.0						
	(10/16-12/16)						(10/16-12/16)										
BUSI 50 INTRODUCTION TO MARKETING						BUSC 460 COMPUTER APPLICATIONS: MICROSOFT OFFICE POWERPOINT											
0587	3h 35m / week		Peelman L	Online	3.0												
	(09/05-12/16)					BUSI 60 FINANCIAL PLANNING AND MONEY MANAGEMENT											
1561	3h 10m / week		Barrie B	Online	3.0												
	(08/21-12/16)																

SECTION	DAYS	TIME	INSTRUCTOR	ROOM	UNITS	SECTION	DAYS	TIME	INSTRUCTOR	ROOM	UNITS	SECTION	DAYS	TIME	INSTRUCTOR	ROOM	UNITS
---------	------	------	------------	------	-------	---------	------	------	------------	------	-------	---------	------	------	------------	------	-------



COMPUTER NETWORKING & SECURITY

In the Computer Networking and Security program, students learn how to interconnect devices both locally and across the Internet, and to protect networks from cyber threats.

Computer networking and security is ranked among the top 20 fastest growing occupations, with a growth rate of 32%.

mpc.edu/cs15

Computer Science and Information Systems

CSIS 1 COMPUTER INFORMATION SYSTEMS

0143	TTh	1:00pm-3:25pm	Olsen J	BMC206	3.0
		(08/22-12/14)			
1086		5h 20m / week	Singh D	Online	3.0
		(08/21-12/16)			
1577		10h 35m / week	Singh D	Online	3.0
		(10/16-12/16)			

CSIS 9 PROGRAMMING FUNDAMENTALS: PYTHON

1290		5h 20m / week	Seagal D	Online	3.0
		(08/21-12/16)			
1614		10h 35m / week	Stoykov A	Online	3.0
		(10/16-12/16)			

CSIS 10A PROGRAMMING METHODS I: JAVA

0146	TTh	10:30am-12:55pm	Rebold T	BMC205	4.0
		(08/22-12/14)			
1051		10h 35m / week	Seagal D	Online	4.0
		(10/16-12/16)			

CSIS 10B PROGRAMMING METHODS II: JAVA

0733		6h 20m / week	Seagal D	Online	4.0
		(08/21-12/16)			

CSIS 10C PROGRAMMING METHODS I.5: C AND C++

0848		6h 20m / week	Rebold T	Online	4.0
		(08/21-12/16)			

CSIS 50 MS OFFICE APPLICATIONS

0147		2h 10m / week	Stewart M	Online	2.0
		(08/21-12/16)			
0928	T	11:00am-11:50am	Stewart M	Online	2.0
	&	1h 10m / week	Stewart M	Online	
		(08/21-12/16)			

CSIS 50L MS OFFICE APPLICATIONS LAB

0149		3h 10m / week	Stewart M	Online	1.0
		(08/21-12/16)			
0929	T	12:00pm-1:15pm	Stewart M	Online	1.0
	&	1h 35m / week	Stewart M	Online	
		(08/21-12/16)			

CSIS 72A ADMINISTERING WINDOWS SERVER CORE INFRASTRUCTURE

0512		2h 10m/wk	Olsen J	Online	3.0
		(08/21-12/16)			

CSIS 75 INTRODUCTION TO COMPUTER HARDWARE/A+ PREP

0152	TTh	3:30pm-5:10pm	Olsen J	BMC205	4.0
	&	3h 25m / week	Olsen J	Online	
		(08/21-12/16)			

CSIS 76A CISCO CERTIFIED NETWORK ASSOCIATE (CCNA) 1

1095		12h 40m / week	Singh D	Online	3.0
		(08/21-10/14)			

CHEM 30A INTRODUCTORY CHEMISTRY FOR HEALTH SCIENCES

0139	M	2:30pm-5:35pm	Baum J	PS202	4.0
	&	M 6:00pm-6:50pm	Baum J	PS207	
		& 2h 15m / week	Baum J	Online	
		(08/21-12/16)			
1033		3h 10m / week	Guha N	Online	4.0
	&	F 12:00pm-3:20pm	Guha N	Online	
		(08/21-12/16)			
1035	M	6:00pm-6:50pm	Baum J	PS207	4.0
	&	M 7:00pm-9:50pm	Baum J	PS202	
		& 2h 15m / week	Baum J	Online	
		(08/21-12/16)			

Sections below offered at the MPC's Marina Education Center:

0201	W	5:30pm-8:35pm	Baum J	MA104	4.0
	&	3h 10m / week	Baum J	Online	
		(08/21-12/16)			
1238	W	1:00pm-4:05pm	Baum J	MA104	4.0
	&	3h 10m / week	Baum J	Online	
		(08/21-12/16)			

Communication Studies

COMM 5 MASS MEDIA METHODS

Sections below offered at the MPC's Marina Education Center:

1223	TTh	11:00am-12:20pm	Osburg	MA401	3.0
		(08/22-12/14)			

COMM 35 INTRODUCTION TO NONVERBAL COMMUNICATION

0752		3h 10m / week	Abend	Online	3.0
		(08/21-12/16)			

SECTION	DAYS	TIME	INSTRUCTOR	ROOM	UNITS	SECTION	DAYS	TIME	INSTRUCTOR	ROOM	UNITS	SECTION	DAYS	TIME	INSTRUCTOR	ROOM	UNITS
---------	------	------	------------	------	-------	---------	------	------	------------	------	-------	---------	------	------	------------	------	-------

Cooperative Work Experience



COOPERATIVE WORK EXPERIENCE



WORK • LEARN • EARN

Did you know you can earn course credit while working at your job, internship, or volunteer work?

ASK US:

- How to find an internship
- How to use your current job for college credit
- How to get started

COOP can boost your grade point average and help you maintain full-time student status and you can pick up a COOP section at any time during the semester!

Contact:
Maj-Britt Kimm or Lindsay Peelman
mpc_coop@mpc.edu
or visit: www.mpc.edu/coop

CSIS 76B CISCO CERTIFIED NETWORK ASSOCIATE (CCNA) 2

1091 12h 40m / week Singh D Online 3.0
(10/16-12/16)

CSIS 80 INTRODUCTION TO UNIX AND LINUX

0154 4h 15m / week Olsen J Online 3.0
(08/21-12/16)

CSIS 86 NETWORK SECURITY FUNDAMENTALS/SECURITY+ PREP

1136 6h 20m / week Singh D Online 3.0
(08/21-12/16)

CSIS 87 COMPUTER FORENSICS

1081 4h 15m / week Olsen J Online 3.0
(08/21-12/16)

CSIS 89 PREPARATION FOR CYBERSECURITY ANALYST CERTIFICATION (CYSA+)

0052 6h 20m / week Singh D Online 3.0
(08/21-12/16)

Counseling

COUN 10 COLLEGE SUCCESS

0327 TTh 10:00am-11:05am Staff GC107 1.0
(09/07-10/19)

0458 1h 35m / week Calima CCAP 1.0
(09/11-11/13)

0539 2h 45m / week De Soto A Online 1.0
(10/16-12/02)

0990 2h 45m / week Boes S Online 1.0
(09/05-10/14)

0992 MW 9:00am-10:05am Anongchanya Online 1.0
(09/06-10/18)

COUN 50 MAKING COLLEGE COUNT

0777 W 9:30am-11:00am De Soto A GC107 3.0
& 1h 20m / week De Soto A Online
(08/21-12/16)

0809 6h 20m / week De Soto A Online 3.0
(10/16-12/16)

COUN 51 CAREER AND LIFE PLANNING

0470 3h 10m / week Stratton J Online 3.0
(08/21-12/16)

0767 M 9:30am-10:50am Gonzalez E. GC107 3.0
& 1h 35m / week Gonzalez E. Online
(08/21-12/16)

0769 T 12:30pm-1:45pm Staff GC107 3.0
& 1h 35m / week Staff Online
(08/21-12/16)

0775 3h 10m / week Staff Online 3.0
(08/21-12/16)

COUN 59 STUDY SKILLS FOR SUCCESS

1009 TTh 10:00am-11:10am Calima GC107 1.0
(10/17-11/30)

COUN 71 CAREER ASSESSMENT AND EXPLORATION

1011 2h 45m / week Mann A Online 1.0
(10/16-12/02)

Dance

DANC 5 DANCE APPRECIATION

0307 3h 10m / week Southard S Online 3.0
(08/21-12/16)

DANC 10A MODERN DANCE I

1454 MW 7:15pm-9:20pm Ross D DA102 1.0
(08/21-12/13)

DANC 10B MODERN DANCE II

0797 MW 7:15pm-9:20pm Ross D DA102 1.0
(08/21-12/13)

DANC 10C MODERN DANCE III

1288 MW 7:15pm-9:20pm Ross D DA102 1.0
(08/21-12/13)

DANC 10D MODERN DANCE IV

0770 MW 7:15pm-9:20pm Ross D DA102 1.0
(08/21-12/13)

DANC 11A JAZZ DANCE I

0133 TTh 12:30pm-2:35pm Southard S DA102 1.0
(08/22-12/14)

DANC 11B JAZZ DANCE II

0134 TTh 12:30pm-2:35pm Southard S DA102 1.0
(08/22-12/14)

DANC 11C JAZZ DANCE III

0137 TTh 12:30pm-2:35pm Southard S DA102 1.0
(08/22-12/14)

DANC 11D JAZZ DANCE IV

0138 TTh 12:30pm-2:35pm Southard S DA102 1.0
(08/22-12/14)

DANC 12A BALLET I

0980 MW 5:00pm-7:05pm Keindl P DA102 1.0
(08/21-12/13)

DANC 12B BALLET II

0981 MW 5:00pm-7:05pm Keindl P DA102 1.0
(08/21-12/13)

DANC 12C BALLET III

0829 MW 5:00pm-7:05pm Keindl P DA102 1.0
(08/21-12/13)

DANC 12D BALLET IV

0771 MW 5:00pm-7:05pm Keindl P DA102 1.0
(08/21-12/13)

DANC 14A BALLROOM DANCE I

0144 TTh 7:15pm-9:20pm Egipciaco A DA101 1.0
(08/22-12/14)

SECTION	DAYS	TIME	INSTRUCTOR	ROOM	UNITS	SECTION	DAYS	TIME	INSTRUCTOR	ROOM	UNITS	SECTION	DAYS	TIME	INSTRUCTOR	ROOM	UNITS
DANC 14B BALLROOM DANCE II						Dental Assisting						DNTL 104 CHAIRSIDE ASSISTING II					
0148	TTh	7:15pm-9:20pm (08/22-12/14)	Egipciaco A	DA101	1.0	DNTL 100 ORIENTATION TO DENTAL CAREERS						0162	TTh	11:30am-1:35pm & TTh 8:00am-11:10am (10/17-12/12)	Grasmuck K Grasmuck K Topper M	LS202 LS202 LS202	3.0
DANC 14C BALLROOM DANCE III						DNTL 101 DENTAL ANATOMY						0163	TTh	11:30am-1:35pm & TTh 1:45pm-4:55pm (10/17-12/12)	Grasmuck K Grasmuck K Miller L	LS202 LS202 LS202	3.0
0151	TTh	7:15pm-9:20pm (08/22-12/14)	Egipciaco A	DA101	1.0	DNTL 102 CHAIRSIDE ASSISTING I						DNTL 105 DENTAL HEALTH SCIENCE					
DANC 14D BALLROOM DANCE IV						DNTL 103 RADIOGRAPHY FOR DENTAL ASSISTANTS						0164	MW	1:30pm-3:35pm (08/21-10/11)	Grasmuck K	LS202	2.0
0165	TTh	7:15pm-9:20pm (08/22-12/14)	Egipciaco A	DA101	1.0	0156	MW	8:00am-10:05am (08/21-10/11)	Grasmuck K	LS202	2.0	Early Childhood Education					
DANC 15A ETHNIC DANCE FORMS I						DNTL 104 CHAIRSIDE ASSISTING II						ECED 1 CHILD GROWTH AND DEVELOPMENT					
0166	TTh	5:00pm-7:05pm (08/21-12/13)	Sinclair	DA103	1.0	DNTL 105 DENTAL HEALTH SCIENCE						0039	3h 10m / week (08/21-12/16)		Oswald A	Online	3.0
DANC 15B ETHNIC DANCE FORMS II						DNTL 106 RADIOGRAPHY FOR DENTAL ASSISTANTS						0141	M	9:30am-10:50am & 1h 35m / week (08/21-12/16)	Lee D Oswald A	CDC201 Online	3.0
0170	TTh	5:00pm-7:05pm (08/21-12/13)	Sinclair	DA103	1.0	0157	MW	10:15am-12:20pm (08/22-10/11)	Grasmuck K	LS202	2.0	ECED 2 CHILD GROWTH AND DEVELOPMENT					
DANC 15C ETHNIC DANCE FORMS III						DNTL 107 RADIOGRAPHY FOR DENTAL ASSISTANTS						0479	T	11:00am-12:20pm & 1h 35m / week (08/21-12/16)	Lee D Lee D	CDC201 Online	3.0
0176	TTh	5:00pm-7:05pm (08/21-12/13)	Sinclair	DA103	1.0	DNTL 108 RADIOGRAPHY FOR DENTAL ASSISTANTS						1107	6h 20m / week (10/16-12/16)		Lee D	Online	3.0
DANC 15D ETHNIC DANCE FORMS IV						DNTL 109 RADIOGRAPHY FOR DENTAL ASSISTANTS						ECED 3 CHILD GROWTH AND DEVELOPMENT					
0179	TTh	5:00pm-7:05pm (08/21-12/13)	Sinclair	DA103	1.0	0158	TTh	11:30am-1:35pm & TTh 8:00am-11:10am & TTh 8:00am-11:10am (08/22-10/10)	Grasmuck K Hopkins Carp Topper M	LS202 LS202 LS202	3.0	ECED 4 CHILD GROWTH AND DEVELOPMENT					
DANC 19A SALSA DANCE I						DNTL 110 RADIOGRAPHY FOR DENTAL ASSISTANTS						ECED 5 CHILD GROWTH AND DEVELOPMENT					
0179	F	5:00pm-7:05pm (08/25-12/15)	Egipciaco A	DA101	0.5	0159	TTh	11:30am-1:35pm & TTh 1:45pm-4:55pm & TTh 1:45pm-4:55pm (08/22-10/10)	Grasmuck K Hopkins Carp Miller L	LS202 LS202 LS202	3.0	ECED 6 CHILD GROWTH AND DEVELOPMENT					
						DNTL 111 RADIOGRAPHY FOR DENTAL ASSISTANTS						ECED 7 CHILD GROWTH AND DEVELOPMENT					
						DNTL 112 RADIOGRAPHY FOR DENTAL ASSISTANTS						ECED 8 CHILD GROWTH AND DEVELOPMENT					
						DNTL 113 RADIOGRAPHY FOR DENTAL ASSISTANTS						ECED 9 CHILD GROWTH AND DEVELOPMENT					
						DNTL 114 RADIOGRAPHY FOR DENTAL ASSISTANTS						ECED 10 CHILD GROWTH AND DEVELOPMENT					
						DNTL 115 RADIOGRAPHY FOR DENTAL ASSISTANTS						ECED 11 CHILD GROWTH AND DEVELOPMENT					
						DNTL 116 RADIOGRAPHY FOR DENTAL ASSISTANTS						ECED 12 CHILD GROWTH AND DEVELOPMENT					
						DNTL 117 RADIOGRAPHY FOR DENTAL ASSISTANTS						ECED 13 CHILD GROWTH AND DEVELOPMENT					
						DNTL 118 RADIOGRAPHY FOR DENTAL ASSISTANTS						ECED 14 CHILD GROWTH AND DEVELOPMENT					
						DNTL 119 RADIOGRAPHY FOR DENTAL ASSISTANTS						ECED 15 CHILD GROWTH AND DEVELOPMENT					
						DNTL 120 RADIOGRAPHY FOR DENTAL ASSISTANTS						ECED 16 CHILD GROWTH AND DEVELOPMENT					
						DNTL 121 RADIOGRAPHY FOR DENTAL ASSISTANTS						ECED 17 CHILD GROWTH AND DEVELOPMENT					
						DNTL 122 RADIOGRAPHY FOR DENTAL ASSISTANTS						ECED 18 CHILD GROWTH AND DEVELOPMENT					
						DNTL 123 RADIOGRAPHY FOR DENTAL ASSISTANTS						ECED 19 CHILD GROWTH AND DEVELOPMENT					
						DNTL 124 RADIOGRAPHY FOR DENTAL ASSISTANTS						ECED 20 CHILD GROWTH AND DEVELOPMENT					
						DNTL 125 RADIOGRAPHY FOR DENTAL ASSISTANTS						ECED 21 CHILD GROWTH AND DEVELOPMENT					
						DNTL 126 RADIOGRAPHY FOR DENTAL ASSISTANTS						ECED 22 CHILD GROWTH AND DEVELOPMENT					
						DNTL 127 RADIOGRAPHY FOR DENTAL ASSISTANTS						ECED 23 CHILD GROWTH AND DEVELOPMENT					
						DNTL 128 RADIOGRAPHY FOR DENTAL ASSISTANTS						ECED 24 CHILD GROWTH AND DEVELOPMENT					
						DNTL 129 RADIOGRAPHY FOR DENTAL ASSISTANTS						ECED 25 CHILD GROWTH AND DEVELOPMENT					
						DNTL 130 RADIOGRAPHY FOR DENTAL ASSISTANTS						ECED 26 CHILD GROWTH AND DEVELOPMENT					
						DNTL 131 RADIOGRAPHY FOR DENTAL ASSISTANTS						ECED 27 CHILD GROWTH AND DEVELOPMENT					
						DNTL 132 RADIOGRAPHY FOR DENTAL ASSISTANTS						ECED 28 CHILD GROWTH AND DEVELOPMENT					
						DNTL 133 RADIOGRAPHY FOR DENTAL ASSISTANTS						ECED 29 CHILD GROWTH AND DEVELOPMENT					
						DNTL 134 RADIOGRAPHY FOR DENTAL ASSISTANTS						ECED 30 CHILD GROWTH AND DEVELOPMENT					
						DNTL 135 RADIOGRAPHY FOR DENTAL ASSISTANTS						ECED 31 CHILD GROWTH AND DEVELOPMENT					
						DNTL 136 RADIOGRAPHY FOR DENTAL ASSISTANTS						ECED 32 CHILD GROWTH AND DEVELOPMENT					
						DNTL 137 RADIOGRAPHY FOR DENTAL ASSISTANTS						ECED 33 CHILD GROWTH AND DEVELOPMENT					
						DNTL 138 RADIOGRAPHY FOR DENTAL ASSISTANTS						ECED 34 CHILD GROWTH AND DEVELOPMENT					
						DNTL 139 RADIOGRAPHY FOR DENTAL ASSISTANTS						ECED 35 CHILD GROWTH AND DEVELOPMENT					
						DNTL 140 RADIOGRAPHY FOR DENTAL ASSISTANTS						ECED 36 CHILD GROWTH AND DEVELOPMENT					
						DNTL 141 RADIOGRAPHY FOR DENTAL ASSISTANTS						ECED 37 CHILD GROWTH AND DEVELOPMENT					
						DNTL 142 RADIOGRAPHY FOR DENTAL ASSISTANTS						ECED 38 CHILD GROWTH AND DEVELOPMENT					
						DNTL 143 RADIOGRAPHY FOR DENTAL ASSISTANTS						ECED 39 CHILD GROWTH AND DEVELOPMENT					
						DNTL 144 RADIOGRAPHY FOR DENTAL ASSISTANTS						ECED 40 CHILD GROWTH AND DEVELOPMENT					
						DNTL 145 RADIOGRAPHY FOR DENTAL ASSISTANTS						ECED 41 CHILD GROWTH AND DEVELOPMENT					
						DNTL 146 RADIOGRAPHY FOR DENTAL ASSISTANTS						ECED 42 CHILD GROWTH AND DEVELOPMENT					
						DNTL 147 RADIOGRAPHY FOR DENTAL ASSISTANTS						ECED 43 CHILD GROWTH AND DEVELOPMENT					
						DNTL 148 RADIOGRAPHY FOR DENTAL ASSISTANTS						ECED 44 CHILD GROWTH AND DEVELOPMENT					
						DNTL 149 RADIOGRAPHY FOR DENTAL ASSISTANTS						ECED 45 CHILD GROWTH AND DEVELOPMENT					
						DNTL 150 RADIOGRAPHY FOR DENTAL ASSISTANTS						ECED 46 CHILD GROWTH AND DEVELOPMENT					
						DNTL 151 RADIOGRAPHY FOR DENTAL ASSISTANTS						ECED 47 CHILD GROWTH AND DEVELOPMENT					
						DNTL 152 RADIOGRAPHY FOR DENTAL ASSISTANTS						ECED 48 CHILD GROWTH AND DEVELOPMENT					
						DNTL 153 RADIOGRAPHY FOR DENTAL ASSISTANTS						ECED 49 CHILD GROWTH AND DEVELOPMENT					
						DNTL 154 RADIOGRAPHY FOR DENTAL ASSISTANTS						ECED 50 CHILD GROWTH AND DEVELOPMENT					
						DNTL 155 RADIOGRAPHY FOR DENTAL ASSISTANTS						ECED 51 CHILD GROWTH AND DEVELOPMENT					
						DNTL 156 RADIOGRAPHY FOR DENTAL ASSISTANTS						ECED 52 CHILD GROWTH AND DEVELOPMENT					
						DNTL 157 RADIOGRAPHY FOR DENTAL ASSISTANTS						ECED 53 CHILD GROWTH AND DEVELOPMENT					
						DNTL 158 RADIOGRAPHY FOR DENTAL ASSISTANTS						ECED 54 CHILD GROWTH AND DEVELOPMENT					
						DNTL 159 RADIOGRAPHY FOR DENTAL ASSISTANTS						ECED 55 CHILD GROWTH AND DEVELOPMENT					
						DNTL 160 RADIOGRAPHY FOR DENTAL ASSISTANTS						ECED 56 CHILD GROWTH AND DEVELOPMENT					
						DNTL 161 RADIOGRAPHY FOR DENTAL ASSISTANTS						ECED 57 CHILD GROWTH AND DEVELOPMENT					
						DNTL 162 RADIOGRAPHY FOR DENTAL ASSISTANTS						ECED 58 CHILD GROWTH AND DEVELOPMENT					
						DNTL 163 RADIOGRAPHY FOR DENTAL ASSISTANTS						ECED 59 CHILD GROWTH AND DEVELOPMENT					
						DNTL 164 RADIOGRAPHY FOR DENTAL ASSISTANTS						ECED 60 CHILD GROWTH AND DEVELOPMENT					
						DNTL 165 RADIOGRAPHY FOR DENTAL ASSISTANTS						ECED 61 CHILD GROWTH AND DEVELOPMENT					
						DNTL 166 RADIOGRAPHY FOR DENTAL ASSISTANTS						ECED 62 CHILD GROWTH AND DEVELOPMENT					
						DNTL 167 RADIOGRAPHY FOR DENTAL ASSISTANTS						ECED 63 CHILD GROWTH AND DEVELOPMENT					
						DNTL 168 RADIOGRAPHY FOR DENTAL ASSISTANTS						ECED 64 CHILD GROWTH AND DEVELOPMENT					
						DNTL 169 RADIOGRAPHY FOR DENTAL ASSISTANTS						ECED 65 CHILD GROWTH AND DEVELOPMENT					
						DNTL 170 RADIOGRAPHY FOR DENTAL ASSISTANTS						ECED 66 CHILD GROWTH AND DEVELOPMENT					
						DNTL 171 RADIOGRAPHY FOR DENTAL ASSISTANTS						ECED 67 CHILD GROWTH AND DEVELOPMENT					
						DNTL 172 RADIOGRAPHY FOR DENTAL ASSISTANTS						ECED 68 CHILD GROWTH AND DEVELOPMENT					
						DNTL 173 RADIOGRAPHY FOR DENTAL ASSISTANTS						ECED 69 CHILD GROWTH AND DEVELOPMENT					
						DNTL 174 RADIOGRAPHY FOR DENTAL ASSISTANTS						ECED 70 CHILD GROWTH AND DEVELOPMENT					
						DNTL 175 RADIOGRAPHY FOR DENTAL ASSISTANTS						ECED 71 CHILD GROWTH AND DEVELOPMENT					
						DNTL 176 RADIOGRAPHY FOR DENTAL ASSISTANTS						ECED 72 CHILD GROWTH AND DEVELOPMENT					
						DNTL 177 RADIOGRAPHY FOR DENTAL ASSISTANTS						ECED 73 CHILD GROWTH AND DEVELOPMENT					
						DNTL 178 RADIOGRAPHY FOR DENTAL ASSISTANTS						ECED 74 CHILD GROWTH AND DEVELOPMENT					
						DNTL 179 RADIOGRAPHY FOR DENTAL ASSISTANTS						ECED 75 CHILD GROWTH AND DEVELOPMENT					
						DNTL 180 RADIOGRAPHY FOR DENTAL ASSISTANTS						ECED 76 CHILD GROWTH AND DEVELOPMENT					
						DNTL 181 RADIOGRAPHY FOR DENTAL ASSISTANTS						ECED 77 CHILD GROWTH AND DEVELOPMENT					
						DNTL 182 RADIOGRAPHY FOR DENTAL ASSISTANTS						ECED 78 CHILD GROWTH AND DEVELOPMENT					
						DNTL 183 RADIOGRAPHY FOR DENTAL ASSISTANTS						ECED 79 CHILD GROWTH AND DEVELOPMENT					
						DNTL 184 RADIOGRAPHY FOR DENTAL ASSISTANTS						ECED 80 CHILD GROWTH AND DEVELOPMENT					
						DNTL 185 RADIOGRAPHY FOR DENTAL ASSISTANTS						ECED 81 CHILD GROWTH AND DEVELOPMENT					
						DNTL 186 RADIOGRAPHY FOR DENTAL ASSISTANTS						ECED 82 CHILD GROWTH AND DEVELOPMENT					
						DNTL 187 RADIOGRAPHY FOR DENTAL ASSISTANTS						ECED 83 CHILD GROWTH AND DEVELOPMENT					
						DNTL 188 RADIOGRAPHY FOR DENTAL ASSISTANTS						ECED 84 CHILD GROWTH AND DEVELOPMENT					
						DNTL 189 RADIOGRAPHY FOR DENTAL ASSISTANTS						ECED 85 CHILD GROWTH AND DEVELOPMENT					
						DNTL 190 RADIOGRAPHY FOR DENTAL ASSISTANTS						ECED 86 CHILD GROWTH AND DEVELOPMENT					
						DNTL 191 RADIOGRAPHY FOR DENTAL ASSISTANTS						ECED 87 CHILD GROWTH AND DEVELOPMENT					
						DNTL 192 RADIOGRAPHY FOR DENTAL ASSISTANTS						ECED 88 CHILD GROWTH AND DEVELOPMENT					
						DNTL 193 RADIOGRAPHY FOR DENTAL ASSISTANTS						ECED 89 CHILD GROWTH AND DEVELOPMENT					
						DNTL 194 RADIOGRAPHY FOR DENTAL ASSISTANTS						ECED 90 CHILD GROWTH AND DEVELOPMENT					
						DNTL 195 RADIOGRAPHY FOR DENTAL ASSISTANTS						ECED 91 CHILD GROWTH AND DEVELOPMENT					
						DNTL 196 RADIOGRAPHY FOR DENTAL ASSISTANTS						ECED 92 CHILD GROWTH AND DEVELOPMENT					
						DNTL 197 RADIOGRAPHY FOR DENTAL ASSISTANTS						ECED 93 CHILD GROWTH AND DEVELOPMENT					
						DNTL 198 RADIOGRAPHY FOR DENTAL ASSISTANTS						ECED 94 CHILD GROWTH AND DEVELOPMENT					
						DNTL 199 RADIOGRAPHY FOR DENTAL ASSISTANTS						ECED 95 CHILD GROWTH AND DEVELOPMENT					
						DNTL 200 RADIOGRAPHY FOR DENTAL ASSISTANTS						ECED 96 CHILD GROWTH AND DEVELOPMENT					
						DNTL 201 RADIOGRAPHY FOR DENTAL ASSISTANTS						ECED 97 CHILD GROWTH AND DEVELOPMENT					
						DNTL 202 RADIOGRAPHY FOR DENTAL ASSISTANTS						ECED 98 CHILD GROWTH AND DEVELOPMENT					
						DNTL 203 RADIOGRAPHY FOR DENTAL ASSISTANTS						ECED 99 CHILD GROWTH AND DEVELOPMENT					
						DNTL 204 RADIOGRAPHY FOR DENTAL ASSISTANTS						ECED 100 CHILD GROWTH AND DEVELOPMENT					



MPC offers classes for all levels in **Ballet, Ballroom, Jazz, Ethnic, Salsa** and **Modern Dance** plus opportunities to choreograph and perform!

photo credit: shunyi mciver

SECTION	DAYS	TIME	INSTRUCTOR	ROOM	UNITS	SECTION	DAYS	TIME	INSTRUCTOR	ROOM	UNITS	SECTION	DAYS	TIME	INSTRUCTOR	ROOM	UNITS
---------	------	------	------------	------	-------	---------	------	------	------------	------	-------	---------	------	------	------------	------	-------



ECED 2 OBSERVATION AND ASSESSMENT

1221	T	6:30pm-7:50pm	Nyznyk	CDC201	3.0
&		1h 30m / week	Nyznyk	Online	
(08/21-12/16)					

ECED 40 POSITIVE CHILD GUIDANCE

0072	W	8:15pm-9:35pm	Oswald A	Online	3.0
&		1h 30m / week	Oswald A	Online	
(08/21-12/16)					

ECED 51 PRINCIPLES AND PRACTICES OF TEACHING YOUNG CHILDREN

Sections below offered at the MPC's Marina Education Center:

0495	W	5:00pm-6:20pm	Oswald A	MA404	3.0
&		1h 30m / week	Oswald A	Online	
(08/21-12/16)					

ECED 52 PRACTICUM: FIELD TEACHING EXPERIENCE

0027	Th	6:30pm-8:35pm	Procive	CDC201	4.0
&		6h 20m / week	Procive	TBD	
(08/21-12/16)					

ECED 55 CHILD, FAMILY, AND COMMUNITY

0028	3h 10m / week	Lee D	Online	3.0
(08/21-12/16)				
0400	6h 20m / week	Lee D	Online	3.0
(10/16-12/16)				

ECED 56 TEACHING IN A DIVERSE SOCIETY

1042	3h 10m / week	Lee D	Online	3.0
(08/21-12/16)				

ECED 61 HEALTH, SAFETY, AND NUTRITION FOR THE YOUNG CHILD

1043	T	5:00pm-6:20pm	Nyznyk	CDC201	3.0
&		1h 30m / week	Nyznyk	Online	
(08/21-12/16)					

ECED 74 WORKING W/CHILDREN AND FAMILIES IMPACTED BY STRESS/ TRAUMA

0077	W	6:30pm-7:50pm	Oswald A	Online	3.0
&		1h 30m / week	Oswald A	Online	
(08/21-12/16)					

ECED 80 INTRODUCTION TO CURRICULUM

Sections below offered at the MPC's Marina Education Center:

0341	Th	6:30pm-7:50pm	Oswald A	MA404	3.0
&		1h 30m / week	Oswald A	Online	
(08/21-12/16)					

Economics

ECON 1 THE AMERICAN ECONOMIC SYSTEM

0035	MW	9:30am-10:50am	Morgan D	SS101	3.0
(08/21-12/13)					

ECON 2 PRINCIPLES OF ECONOMICS: MACRO

0168	Th	2:30pm-3:45pm	Albert	LF103	3.0
&		1h 35m / week	Albert	Online	
(08/21-12/16)					
0169	3h 10m / week	Albert	Online	3.0	
(08/21-12/16)					
0620	3h 10m / week	Albert	Online	3.0	
(08/21-12/16)					

Sections below offered at the MPC's Marina Education Center:

0264	T	11:00am-12:30pm	Saha S	MT4	3.0
&		1h 20m / week	Saha S	Online	
(08/21-12/16)					

ECON 4 PRINCIPLES OF ECONOMICS: MICRO

0173	3h 10m / week	Albert	Online	3.0	
(08/21-12/16)					
0388	MW	12:30pm-1:50pm	Morgan D	SS102	3.0
(08/21-12/13)					
1052	3h 10m / week	Albert	Online	3.0	
(08/21-12/16)					

SECTION	DAYS	TIME	INSTRUCTOR	ROOM	UNITS	SECTION	DAYS	TIME	INSTRUCTOR	ROOM	UNITS	SECTION	DAYS	TIME	INSTRUCTOR	ROOM	UNITS
---------	------	------	------------	------	-------	---------	------	------	------------	------	-------	---------	------	------	------------	------	-------

Education

EDUC 1 INTRODUCTION TO TEACHING AND EDUCATION

0276	4h 15m / week	(10/16-12/16)	Luke J	Online	2.0
0345	M 11:00am-12:20pm & 1h 10m / week	(08/21-12/16)	Luke J	AS101 Online	2.0

EDUC 1L EDUCATION SERVICE LEARNING LAB

0313	3h 10m / week	(08/21-12/16)	Luke J	Online	1.0
------	---------------	---------------	--------	--------	-----

Emergency Medical Services

EMMS 30 PARAMEDIC - CORE

0779	22h 50m / week		Staff	SPS206	14.0
------	----------------	--	-------	--------	------

EMMS 31 PARAMEDIC - CLINICAL

0416	TWTh 8:00am-11:50am & TWTh 1:00pm-4:50pm	(08/29-11/02)	Staff	SPS206	4.5
0462	WThF 8:00am-11:50am & WThF 1:00pm-5:05pm	(08/30-11/03)	Staff	SPS206	4.5

EMMS 170A EMERGENCY MEDICAL TECHNICIAN 1: BASIC TRAINING

0287	MW 6:00pm-10:05pm	(08/21-12/13)	Parker A	SPS101	7.0
0288	TTh 6:00pm-10:05pm	(08/22-12/14)	Parker A	SPS101	7.0
0637	22h 35m / week	(11/10-12/21)	Futoran J	MTC	7.0

EMMS 170B EMERGENCY MEDICAL TECHNICIAN 1: BASIC TRAINING APPLICATION

0290	4h 15m / week	(08/21-12/16)	Parker A	SPS101	2.0
0291	4h 15m / week	(08/21-12/16)	Parker A	SPS101	2.0
0431	34h 0m / week	(12/04-12/15)	Futoran J	MTC	2.0

EMMS 470A EMERGENCY MEDICAL TECHNICIAN 1: BASIC TRAINING

0818	MW 6:00pm-9:15pm & 1h 30m / week	(08/21-12/16)	Parker A	SPS101	0.0
0821	TTh 6:00pm-9:15pm & 1h 30m / week	(08/21-12/16)	Parker A	SPS101	0.0

EMMS 470B EMERGENCY MEDICAL TECHNICIAN 1: BASIC TRAINING APPLICATION

0820	4h 15m / week	(08/21-12/16)	Parker A	SPS101	0.0
0822	4h 15m / week	(08/21-12/16)	Parker A	SPS101	0.0

EMMS 470R EMT-1: RECERTIFICATION

0385	4h 5m / week	(10/16-12/16)	Parker A	SPS101	0.0
0826	4h 5m / week	(10/16-12/15)	Parker A	SPS101	0.0

Engineering

ENGR 1A INTRODUCTION TO ENGINEERING

1455	T 5:00pm-6:50pm & Th 4:00pm-7:05pm	(08/22-12/14)	Hacker V	Online	3.0
------	------------------------------------	---------------	----------	--------	-----

ENGR 2 ENGINEERING DESIGN GRAPHICS

0432	5h 20m / week	(08/21-12/16)	Hacker V	Online	3.0
------	---------------	---------------	----------	--------	-----

ENGR 8 ENGINEERING STATICS

1522	4h 15m / week	(08/21-12/16)	Pedersen J	Online	3.0
------	---------------	---------------	------------	--------	-----

English

ENGL 1A COLLEGE COMPOSITION

0240	MW 11:00am-12:20pm	(08/21-12/13)	Gerard A	HU101	3.0
0246	MW 11:00am-12:20pm	(08/21-12/13)	Kary B	HU102	3.0
0298	TTh 11:00am-12:20pm	(08/22-12/14)	Gerard J	HU102	3.0
0321	TTh 11:00am-12:20pm	(08/22-12/14)	Gerard A	HU101	3.0
0322	3h 10m / week	(08/21-12/16)	Dennehy	Online	3.0
0326	MW 8:00am-9:20am	(08/21-12/13)	Converse J	HU101	3.0
0328	MW 9:30am-10:50am	(08/21-12/13)	Kary B	HU102	3.0
0329	MW 9:30am-10:50am	(08/21-12/13)	Fetler E	HU101	3.0
0330	MW 9:30am-10:50am	(08/21-12/13)	McMillen J	HU206	3.0
0331	MW 11:00am-12:20pm	(08/21-12/13)	Van Dam	HU212	3.0
0332	MW 11:00am-12:20pm	(08/21-12/13)	McMillen J	HU206	3.0
0334	TTh 8:00am-9:20am	(08/22-12/14)	Ibessaine	HU102	3.0

0335	TTh 9:30am-10:50am	(08/22-12/14)	Ibessaine	HU102	3.0
0336	TTh 9:30am-10:50am	(08/22-12/14)	Fetler E	HU101	3.0
0338	TTh 9:30am-10:50am	(08/22-12/14)	Kary B	HU207	3.0
0361	TTh 11:00am-12:20pm	(08/22-12/14)	Haffa A	HU207	3.0
0362	TTh 11:00am-12:20pm	(08/22-12/14)	Watson L	HU206	3.0
0364	TTh 12:30pm-1:50pm	(08/22-12/14)	Watson L	HU206	3.0
0371	6h 20m / week	(08/21-10/14)	Penney	Online	3.0
0374	3h 10m / week	(08/21-12/16)	Penney	Online	3.0
0377	3h 10m / week	(08/21-12/16)	Gerard J	Online	3.0
0392	3h 10m / week	(08/21-12/16)	Dennehy	Online	3.0
0547	3h 10m / week	(08/21-12/16)	Marchand H	Online	3.0
0549	3h 10m / week	(08/21-12/16)	Marchand H	Online	3.0
0650	3h 10m / week	(08/21-12/16)	Marchand H	Online	3.0
0652	F 9:00am-12:25pm	(08/25-12/15)	Bachman E	HU101	3.0
0870	TF 8:30am-10:00am		Woods R	MHS	3.0
0971	3h 10m / week	(08/21-12/16)	Penney	Online	3.0
1109	6h 20m / week	(10/16-12/16)	Penney	Online	3.0
1110	TF 10:15am-11:45am		Jonker K	MaHS	3.0
1414	MTh 8:30am-10:00am		Woods R	MHS	3.0
1415	TF 8:30am-10:00am		Farson J	MHS	3.0
1715	MTh 8:30am-10:00am		Van Dam	SHS	3.0

Sections below offered at the MPC's Marina Education Center:

0056	MW 8:00am-9:20am	(08/21-12/13)	Rodger B	MA401	3.0
0333	MW 12:30pm-1:50pm	(08/21-12/13)	Farson J	MA402	3.0
0369	W 6:30pm-9:35pm	(08/23-12/13)	Jonker K	MA401	3.0

ENGL 1B INTRODUCTION TO LITERATURE

0304	MW 9:30am-10:50am	(08/21-12/13)	Eubanks K.	HU105	3.0
0339	3h 10m / week	(08/21-12/16)	Osburg	Online	3.0

SECTION	DAYS	TIME	INSTRUCTOR	ROOM	UNITS	SECTION	DAYS	TIME	INSTRUCTOR	ROOM	UNITS	SECTION	DAYS	TIME	INSTRUCTOR	ROOM	UNITS
---------	------	------	------------	------	-------	---------	------	------	------------	------	-------	---------	------	------	------------	------	-------

CREATIVE WRITING



Intensive and inspiring classes in multiple genres, designed to build your confidence & strengthen your skills.

- **ENGL 31:** Introduction to Creative Writing
- **ENGL 53:** Poetry Writing
- **ENGL 54:** Novel Writing I

“WHERE IMAGINATION MEETS INSPIRATION”

www.mpc.edu/creativewriting

ENGL 2 ARGUMENTATIVE WRITING AND CRITICAL THINKING

0065	MW	8:00am-9:20am	Eubanks K.	HU105	3.0
		(08/21-12/13)			
0247	MW	9:30am-10:50am	Haffa	HU207	3.0
		(08/21-12/13)			
0324	MW	11:00am-12:20pm	Haffa	HU207	3.0
		(08/21-12/13)			
0342		6h 20m / week	Young D	Online	3.0
		(10/16-12/16)			
0343	TTh	9:30am-10:50am	Eubanks K.	HU105	3.0
		(08/22-12/14)			
0344	TTh	11:00am-12:20pm	Eubanks K.	HU105	3.0
		(08/22-12/14)			
0346	TTh	12:30pm-1:50pm	Kary B	HU207	3.0
		(08/22-12/14)			
0348		3h 10m / week	Osburg	Online	3.0
		(08/21-12/16)			
0475		3h 10m / week	Osburg	Online	3.0
		(08/21-12/16)			
0615		3h 10m / week	Kim J	Online	3.0
		(08/21-12/16)			
1070		3h 10m / week	Hulanicki	Online	3.0
		(08/21-12/16)			
1624		3h 10m / week	Pirani	Online	3.0
		(08/21-12/16)			

Sections below offered at the MPC's Marina Education Center:
 0347 T 6:30pm-9:35pm Fujimoto S MA401 3.0
 (08/22-12/12)

ENGL 31 INTRODUCTION TO CREATIVE WRITING

0356	MW	11:00am-12:20pm	Converse J	HU105	3.0
		(08/21-12/13)			

ENGL 40B SURVEY OF AMERICAN LITERATURE II

0203		3h 10m / week	Gerard J	Online	3.0
		(08/21-12/16)			

ENGL 43 COMICS AS LITERATURE

0206		3h 10m / week	Osburg	Online	3.0
		(08/21-12/16)			

ENGL 47 SURVEY OF BRITISH LITERATURE II

0207		3h 10m / week	Dennehy	Online	3.0
		(08/21-12/16)			

ENGL 53 POETRY WRITING

0208		3h 10m / week	Dennehy	Online	3.0
		(08/21-12/16)			

ENGL 54 NOVEL WRITING I

1061	T	6:00pm-9:05pm	Marchand H	Online	3.0
		(08/22-12/12)			

ENGL 101A COLLEGE COMPOSITION PLUS

0413	MW	12:30pm-1:50pm	Gerard A	HU101	1.0
		(08/21-12/13)			
0422	MW	12:30pm-1:50pm	Kary B	HU102	1.0
		(08/21-12/13)			
0438	TTh	12:30pm-1:50pm	Gerard J	HU102	1.0
		(08/22-12/14)			
0467	TTh	12:30pm-1:50pm	Gerard A	HU101	1.0
		(08/22-12/14)			
0474		3h 10m / week	Dennehy	Online	1.0
		(08/21-12/16)			

Sections below offered at the MPC's Marina Education Center:
 0412 MW 9:30am-10:50am Rodger B MA401 1.0
 (08/21-12/13)

ENGL 400 ACADEMIC SUPPORT

0417		9h 30m / week	Staff	HU112	0.0
		(08/21-12/16)			
0887		9h 30m / week	Staff	Online	0.0
		(08/21-12/16)			
0982		9h 30m / week	Staff	CCAP	0.0
		(08/21-12/16)			



LANGUAGE

Highly interactive credit and noncredit courses designed to help non-native English speakers communicate by gaining fluency in listening, speaking, reading, and writing English.

www.mpc.edu/ensl

Lower levels

- Focus on fundamentals
- Highly interactive
- Supportive learning environment

Upper levels

- Focus on academic reading & writing
- Prepare students to succeed at 4-year colleges

English As A Second Language

ENSL 11 ADVANCED READING AND WRITING

0234	5h 15m / week (08/21-12/16)	Lankford T	TBD	5.0
0812	MW 9:00am-10:50am & 1h 25m / week (08/21-12/16)	Lankford T	HU212	5.0
		Lankford T	Online	

ENSL 312 BEGINNING ENGLISH: SPEAKING AND LISTENING

0514	MW 8:45am-10:50am (08/21-12/13)	Dietrich-Hart	HU210	4.0
------	------------------------------------	---------------	-------	-----

ENSL 313 BEGINNING ENGLISH: SPEAKING AND LISTENING

0517	TTh 8:30am-10:55am (08/22-12/14)	Sanders C	HU210	5.0
------	-------------------------------------	-----------	-------	-----

ENSL 321 HIGH-BEGINNING READING AND WRITING

0222	TTh 11:30am-1:55pm (08/22-12/14)	May M	HU201	5.0
------	-------------------------------------	-------	-------	-----

Sections below offered at the MPC's Marina Education Center:
0023 MW 6:00pm-8:25pm Warren N MA103 5.0
(08/21-12/13)

ENSL 323 HIGH-BEGINNING SPEAKING AND LISTENING

Sections below offered at the MPC's Marina Education Center:
0025 TTh 6:00pm-8:05pm Lankford T MA403 4.0
(08/22-12/14)

ENSL 328 PRONUNCIATION AND SPELLING

0073	MW 11:00am-1:05pm (08/21-12/13)	Dietrich-Hart C	HU210	4.0
------	------------------------------------	-----------------	-------	-----

ENSL 331 LOW-INTERMEDIATE READING AND WRITING

0265	TTh 9:00am-11:25am (08/22-12/14)	Gorman D	HU212	5.0
------	-------------------------------------	----------	-------	-----

Sections below offered at the MPC's Marina Education Center:
1431 MW 6:00pm-8:35pm Sanders C MA401 5.0
(08/28-12/13)

ENSL 334 LOW-INTERMEDIATE SPEAKING AND LISTENING

0271	MW 8:45am-10:50am (08/21-12/13)	Nelson J	HU203	4.0
------	------------------------------------	----------	-------	-----

Sections below offered at the MPC's Marina Education Center:
1433 TTh 6:00pm-8:05pm Lankford T MA402 4.0
(08/22-12/14)

ENSL 336 ENGLISH SKILLS FOR SUCCESS II

Sections below offered at the MPC's Marina Education Center:
1229 MW 7:00pm-8:20pm Staff MA402 1.5
(10/16-12/13)

ENSL 342 INTERMEDIATE READING AND WRITING

0460	TTh 9:00am-11:25am (08/22-12/14)	Lankford T	HU202	5.0
------	-------------------------------------	------------	-------	-----

ENSL 345 INTERMEDIATE SPEAKING AND LISTENING

0461	MW 8:45am-10:50am (08/21-12/13)	May M	HU201	4.0
------	------------------------------------	-------	-------	-----

ENSL 346 HIGH-INTERMEDIATE READING AND WRITING: AMERICAN CULTURE

1438	TTh 9:00am-11:25am (08/22-12/14)	May M	HU201	5.0
------	-------------------------------------	-------	-------	-----

ENSL 348 HIGH-INTERMEDIATE SPEAKING AND LISTENING

1436	TTh 11:30am-1:35pm (08/22-12/14)	Gorman D	HU212	4.0
------	-------------------------------------	----------	-------	-----

ENSL 412 BEGINNING ENGLISH: SPEAKING AND LISTENING

0516	MW 8:45am-10:50am (08/21-12/13)	Dietrich-Hart	HU210	0.0
------	------------------------------------	---------------	-------	-----

ENSL 413 BEGINNING ENGLISH: SPEAKING AND LISTENING

0518	TTh 8:30am-10:55am (08/22-12/14)	Sanders C	HU210	0.0
------	-------------------------------------	-----------	-------	-----

SECTION	DAYS	TIME	INSTRUCTOR	ROOM	UNITS	SECTION	DAYS	TIME	INSTRUCTOR	ROOM	UNITS	SECTION	DAYS	TIME	INSTRUCTOR	ROOM	UNITS
ENSL 421 HIGH-BEGINNING READING AND WRITING						<i>Sections below offered at the MPC's Marina Education Center:</i>						Ethnic Studies					
0229	TTh	11:30am-1:55pm	May M	HU201	0.0	1434	TTh	6:00pm-8:05pm	Lankford T	MA402	0.0	ETNC 4 MEXICAN-AMERICAN AND CHICANO ART					
		(08/22-12/14)						(08/22-12/14)				0586	6h 20m / week		Cabrera V	Online	3.0
<i>Sections below offered at the MPC's Marina Education Center:</i>						ENSL 436 ENGLISH SKILLS FOR SUCCESS II						0102 6h 20m / week Cabrera V Online 3.0					
0024	MW	6:00pm-8:25pm	Warren N	MA103	0.0	<i>Sections below offered at the MPC's Marina Education Center:</i>						0103 MW 9:30am-10:50am Cabrera K SS104 3.0					
		(08/21-12/13)				1242	MW	7:00pm-8:20pm	Staff	MA402	0.0	ETNC 5 AFRICAN-AMERICAN ARTS AND MUSIC					
ENSL 423 HIGH-BEGINNING SPEAKING AND LISTENING						<i>Sections below offered at the MPC's Marina Education Center:</i>						08/21-10/14)					
0026	TTh	6:00pm-8:05pm	Lankford T	MA403	0.0	ENSL 442 INTERMEDIATE READING AND WRITING						ETNC 6 ETHNIC IMAGES IN FILM					
		(08/22-12/14)				0472	TTh	9:00am-11:25am	Lankford T	HU202	0.0	0448 TTh 9:30am-10:50am Batista V SS205 3.0					
<i>Sections below offered at the MPC's Marina Education Center:</i>						ENSL 445 INTERMEDIATE SPEAKING AND LISTENING						ETNC 10 INTRODUCTION TO ETHNIC STUDIES					
0074	MW	11:00am-1:05pm	Dietrich-Hart C	HU210	0.0	<i>Sections below offered at the MPC's Marina Education Center:</i>						0735 4h 35m / week Cabrera K CCAP 3.0					
		(08/21-12/13)				1439	TTh	9:00am-11:25am	May M	HU201	0.0	<i>Sections below offered at the MPC's Marina Education Center:</i>					
ENSL 431 LOW-INTERMEDIATE READING AND WRITING						ENSL 446 HIGH-INTERMEDIATE READING AND WRITING: AMERICAN CULTURE						0635 TTh 12:30pm-1:50pm Cabrera K MA404 3.0					
0268	TTh	9:00am-11:25am	Gorman D	HU212	0.0	<i>Sections below offered at the MPC's Marina Education Center:</i>						(08/22-12/14)					
		(08/22-12/14)				1437	TTh	11:30am-1:35pm	Gorman D	HU212	0.0	ENSL 448 HIGH-INTERMEDIATE SPEAKING AND LISTENING					
<i>Sections below offered at the MPC's Marina Education Center:</i>						ENSL 434 LOW-INTERMEDIATE SPEAKING AND LISTENING											
1432	MW	6:00pm-8:35pm	Sanders C	MA401	0.0	<i>Sections below offered at the MPC's Marina Education Center:</i>											
		(08/28-12/13)				0272	MW	8:45am-10:50am	Nelson J	HU203	0.0						
ENSL 434 LOW-INTERMEDIATE SPEAKING AND LISTENING																	
0272	MW	8:45am-10:50am	Nelson J	HU203	0.0												
		(08/21-12/13)															



SOCIAL JUSTICE: ETHNIC STUDIES



Combine critical thinking and communication skills with a deep understanding of social issues with an AA-T in Social Justice: Ethnic Studies. A degree in Social Justice Studies can be used in social work, conflict resolution, community organizing, education, public policy, or human rights development. Social Justice Studies graduates become proactive citizens that address social issues in their communities.

mpc.edu/etnc

SECTION	DAYS	TIME	INSTRUCTOR	ROOM	UNITS	SECTION	DAYS	TIME	INSTRUCTOR	ROOM	UNITS	SECTION	DAYS	TIME	INSTRUCTOR	ROOM	UNITS
ETNC 13			INTRODUCTION TO RACE AND ETHNICITY														
<i>Sections below offered at the MPC's Marina Education Center:</i>																	
0317	MW	11:00am-12:20pm	Villarreal A	MA501	3.0												
(08/21-12/13)																	
ETNC 16			AFRICAN-AMERICANS IN AMERICAN POLITICS														
0103		6h 20m / week	Cabrera K	Online	3.0												
(10/16-12/16)																	
0443		6h 20m / week	Cabrera K	Online	3.0												
(08/21-10/14)																	
ETNC 18			LATINOS IN AMERICAN POLITICS														
0478	MW	9:30am-10:50am	Serena D	Online	3.0												
(08/21-12/13)																	
ETNC 20			NATIVE PEOPLES OF NORTH AMERICA														
0117	Th	7:00pm-8:50pm	Arreola L	Online	3.0												
& 2h 15m / week Arreola L Online																	
(09/25-12/16)																	
ETNC 22			ASIAN PACIFIC AMERICANS IN AMERICAN SOCIETY														
0639		6h 20m / week	Cabrera V	Online	3.0												
(10/16-12/16)																	
ETNC 25			AFRICAN AMERICANS IN U.S. HISTORY 1865 TO PRESENT														
0068	MW	11:00am-12:20pm	Batista V	SS104	3.0												
(08/21-12/13)																	
						Fashion											
FASH 10			INTRODUCTION TO FASHION														
0225	Th	12:00pm-1:50pm	Schneider E	Online	3.0												
& 1h 10m / week Schneider E Online																	
(08/21-12/16)																	
FASH 15			TEXTILES														
0217	Th	10:00am-11:50am	Schneider E	Online	3.0												
& 4h 45m / week Schneider E Online																	
(10/16-12/16)																	
						Fire Protection Technology											
Offered at the MPC Public Safety Training Center, 2642 Colonel Durham St., Seaside, CA 93955																	
For additional information call us at: (831) 646-4240																	
FPTC 3			PRINCIPLES OF FIRE AND EMERGENCY SERVICES SAFETY AND SURVIVAL														
1444	W	6:30pm-9:35pm	Reed Roger	SPS119	3.0												
& W 6:30pm-9:35pm Webb SPS119																	
(08/23-12/13)																	
FPTC 5			FIRE PREVENTION														
1092		3h 10m / week	Schwinge C	Online	3.0												
(08/21-12/16)																	
FPTC 6			FIRE PROTECTION SYSTEMS														
0002		3h 10m / week	Goodwin	Online	3.0												
(08/21-12/16)																	
FPTC 101			INTRODUCTION TO FIREFIGHTER ACADEMY														
0464	T	1:00pm-5:05pm	Keisling J	SPS106	3.0												
& T 1:00pm-5:05pm Vega Torres SPS106																	
& T 1:00pm-5:05pm Wong R SPS106																	
(08/22-12/12)																	
FPTC 102A			FIREFIGHTER I OBSERVATION AND CERTIFICATION ASSESSMENT														
1057		42h 25m / week	Greenlee G	SPS119	2.0												
(12/04-12/15)																	
FPTC 102B			FIREFIGHTER II OBSERVATION AND CERTIFICATION ASSESSMENT														
0952		22h 15m / week	Staff	SPS119	1.0												
(12/04-12/15)																	
FPTC 105A			FIREFIGHTER ACADEMY														
0401	TTh	6:00pm-9:50pm	Greenlee G	SPS119	14.5												
& SatSun 6:00am-7:50am Greenlee G SPS119																	
& SatSun 8:00am-11:50am Greenlee G SPS119																	
& SatSun 1:00pm-4:50pm Greenlee G SPS119																	
FPTC 105B			FIREFIGHTER ACADEMY APPLICATION														
0402		14h 0m / week	Greenlee G	SPS119	6.0												

Enroll in a First Responder Training Program at MPC!

Our instructors with real world work experience in Fire, Law Enforcement, and EMT will guide you through developing the knowledge and skills you need as a first responder serving your community.



Public Safety Training Center

2642 Colonel Durham St., Seaside • www.mpc.edu/pstc

SECTION	DAYS	TIME	INSTRUCTOR	ROOM	UNITS	SECTION	DAYS	TIME	INSTRUCTOR	ROOM	UNITS	SECTION	DAYS	TIME	INSTRUCTOR	ROOM	UNITS
---------	------	------	------------	------	-------	---------	------	------	------------	------	-------	---------	------	------	------------	------	-------

Learn to be an **AGENT of CHANGE**

Complete your degree in Gender and Women's Studies, a dynamic multicultural program offering courses in highly relevant topics like these fall offerings.

GWOS 3: Gender and Violence

Explore causes and impacts of gender-based violence through a feminist lens.

GWOS 40: Introduction to Feminist Theory

Explore a range of topics in both current and historical contexts in this broad survey course.



Ask your counselor about GWOS Guided Pathways ---- www.mpc.edu/counseling

FPTC 213 SKILLS AND KNOWLEDGE UPDATE FOR FULL-TIME FIREFIGHTERS

0557	4h 40m / week	Vega Torres	MARFD	3.0
0584	4h 40m / week	Keisling T	GRNFD	3.0
0588	4h 40m / week	Reyes J	MCRFPD	3.0
0602	4h 40m / week	Tsudama K	CDFGR	3.0
0603	4h 40m / week	Blaha R	SFD	3.0
0890	4h 40m / week	Courtney J	MFD	3.0

FPTC 214 SKILLS & KNOWLEDGE UPDATE FOR VOLUNTEER/RESERVE FIREFIGHTERS

0560	1h 30m / week	Vega Torres	MARFD	1.0
0573	1h 30m / week	Keisling T	GRNFD	1.0
0607	2h 20m / week	Goetz C	MCFB	1.5
0610	1h 30m / week	Staff	BSFB	1.0
0900	1h 30m / week	Blaha R	SFD	1.0
0903	1h 30m / week	Reyes J	MCRFPD	1.0
0994	55h 15m / week (08/21-08/25)	Tsudama K	CDFGR	1.5
1298	1h 30m / week	Tsudama K	CDFGR	1.0

FPTC 405A FIREFIGHTER ACADEMY

0414	TTh 6:00pm-9:50pm	Greenlee G	SPS119	0.0
	& SatSun 6:00am-7:50am	Greenlee G	SPS119	
	& SatSun 8:00am-11:50am	Greenlee G	SPS119	
	& SatSun 1:00pm-4:50pm	Greenlee G	SPS119	

FPTC 405B FIREFIGHTER ACADEMY APPLICATION

0415	14h 0m / week	Greenlee G	SPS119	0.0
------	---------------	------------	--------	-----

French

FREN 1A ELEMENTARY FRENCH I

0275	TTh 5:30pm-7:05pm	Michael	Online	5.0
	& 1h 30m / week	Michael	Online	
	(08/21-12/16)			
0509	MW 11:00am-12:35pm	Michael	Online	5.0
	& 1h 30m / week	Michael	Online	
	(08/21-12/16)			

Gender & Women's Studies

GWOS 1 INTRODUCTION TO GENDER AND WOMEN'S STUDIES

0031	MW 2:00pm-3:20pm	Staff	MA403	3.0
	(08/21-12/13)			
0935	3h 10m / week	Davis D	Online	3.0
	(08/21-12/16)			

GWOS 3 GENDER AND VIOLENCE

0540	6h 20m / week	Davis D	Online	3.0
	(10/16-12/16)			

GWOS 10 GENDER IN AMERICAN POLITICS

0096	3h 10m / week	Blanchard L	Online	3.0
	(08/21-12/16)			

GWOS 12 WOMEN IN UNITED STATES HISTORY

0215	TTh 12:30pm-1:50pm	Staff	SS102	3.0
	(08/22-12/14)			

0315	6h 20m / week	Davis D	Online	3.0
	(08/21-10/14)			

0940	TTh 9:30am-10:50am	Staff	SS101	3.0
	(08/22-12/14)			

1048	6h 20m / week	Davis D	Online	3.0
	(10/16-12/16)			

GWOS 15 INTRODUCTION TO LGBTQ GLOBAL LITERATURES

0091	3h 10m / week	Davis D	Online	3.0
	(08/21-12/16)			

GWOS 40 INTRODUCTION TO FEMINIST THEORY

0751	3h 10m / week	Davis D	Online	3.0
	(08/21-12/16)			

SECTION	DAYS	TIME	INSTRUCTOR	ROOM	UNITS	SECTION	DAYS	TIME	INSTRUCTOR	ROOM	UNITS	SECTION	DAYS	TIME	INSTRUCTOR	ROOM	UNITS	
Gentrain						GENT 410 THE AGE OF REASON (1690-1775)						Global Studies						
GENT 8	LATE RENAISSANCE AND REFORMATION (1520-1600)					0538	TTh	8:45am-10:50am	Haffa	LF103	0.0	GLST 1	INTRODUCTION TO GLOBAL STUDIES					
0482	TTh	8:45am-10:50am	Haffa	LF103	1.0	& TTh	8:45am-10:50am	Madsen	LF103		0311	3h 10m / week		Belval J	Online	3.0		
	& TTh	8:45am-10:50am	Madsen	LF103		& TTh	8:45am-10:50am	Spoto S	LF103			(08/21-12/16)						
	& TTh	8:45am-10:50am	Spoto S	LF103		& TTh	8:45am-10:50am	Staff	LF103		Health							
	& TTh	8:45am-10:50am	Staff	LF103			(10/17-11/09)				HLTH 4	HEALTHY LIVING						
GENT 9	FOUNDATIONS OF THE MODERN WORLD (1600-1690)					GENT 411 REACTION AND REVOLUTION (1775-1815)	0546	TTh	8:45am-10:50am	Haffa	LF103	0.0	0118	6h 20m / week		Shirley K	Online	3.0
0485	TTh	8:45am-10:50am	Haffa	LF103	1.0	& TTh	8:45am-10:50am	Madsen	LF103			(10/16-12/16)						
	& TTh	8:45am-10:50am	Madsen	LF103		& TTh	8:45am-10:50am	Spoto S	LF103		0434	3h 10m / week		Shirley K	Online	3.0		
	& TTh	8:45am-10:50am	Spoto S	LF103		& TTh	8:45am-10:50am	Staff	LF103			(08/21-12/16)						
	& TTh	8:45am-10:50am	Staff	LF103			(11/14-12/14)				HLTH 7	WOMEN'S HEALTH						
GENT 10	THE AGE OF REASON (1690-1775)					GEOG 5	WORLD REGIONAL GEOGRAPHY					0522	TTh	9:30am-10:50am	Shirley K	LS102	3.0	
0488	TTh	8:45am-10:50am	Haffa	LF103	1.0	0964	M	9:30am-10:50am	Staff	SS201	3.0		(08/22-12/14)					
	& TTh	8:45am-10:50am	Madsen	LF103		&	1h 35m / week	Staff	Online			History						
	& TTh	8:45am-10:50am	Spoto S	LF103			(08/21-12/16)				HIST 4	WESTERN CIVILIZATION I						
	& TTh	8:45am-10:50am	Staff	LF103			(10/17-11/09)				0030	TTh	11:00am-12:20pm	Joesten D	SS101	3.0		
GENT 11	REACTION AND REVOLUTION (1775-1815)					Geology	GEOG 2	PHYSICAL GEOLOGY						(08/22-12/14)				
0504	TTh	8:45am-10:50am	Haffa	LF103	1.0	0273	3h 10m / week		Turrini Smith	Online	3.0	HIST 7	WORLD HISTORY TO 1500					
	& TTh	8:45am-10:50am	Madsen	LF103			(08/21-12/16)				0048	3h 10m / week		Finell J	Online	3.0		
	& TTh	8:45am-10:50am	Spoto S	LF103		0520	3h 10m / week		Turrini Smith	Online	3.0		(08/21-12/16)					
	& TTh	8:45am-10:50am	Staff	LF103			(08/21-12/16)				0080	MW	11:00am-12:20pm	Staff	SS101	3.0		
GENT 22	THE AGE OF REVOLUTION (1690-1870)					GEOG 2L	PHYSICAL GEOLOGY LABORATORY						(08/21-12/13)					
0513	TTh	8:45am-10:50am	Haffa	LF103	3.0	0515	T	8:00am-11:05am	Turrini Smith	Online	1.0	HIST 8	WORLD HISTORY SINCE 1500					
	& TTh	8:45am-10:50am	Madsen	LF103			(08/22-12/12)				0227	3h 10m / week		Finell J	Online	3.0		
	& TTh	8:45am-10:50am	Spoto S	LF103		0524	T	12:00pm-3:05pm	Turrini Smith	Online	1.0		(08/21-12/16)					
	& TTh	8:45am-10:50am	Staff	LF103			(08/22-12/12)				0878	MTh	1:55pm-3:25pm	Joesten D	MaHS	3.0		
GENT 408	LATE RENAISSANCE AND REFORMATION (1520-1600)					GEOG 9	EARTH CATASTROPHES AND DISASTERS					HIST 12	WOMEN IN UNITED STATES HISTORY					
0525	TTh	8:45am-10:50am	Haffa	LF103	0.0	0484	3h 10m / week		Garcia Garci	Online	3.0	0221	TTh	12:30pm-1:50pm	Staff	SS102	3.0	
	& TTh	8:45am-10:50am	Madsen	LF103			(08/21-12/16)					(08/22-12/14)						
	& TTh	8:45am-10:50am	Spoto S	LF103		1234	3h 10m / week		Garcia Garci	Online	3.0	0314	6h 20m / week		Davis D	Online	3.0	
	& TTh	8:45am-10:50am	Staff	LF103			(08/21-12/16)					(08/21-10/14)						
GENT 409	FOUNDATIONS OF THE MODERN WORLD (1600-1690)					GEOG 12	EARTH OCEAN CLIMATE: INTRODUCTION TO EARTH SCIENCE					0528	TTh	9:30am-10:50am	Staff	SS101	3.0	
0532	TTh	8:45am-10:50am	Haffa	LF103	0.0	0739	3h 10m / week		Hochstaedter	Online	3.0		(08/22-12/14)					
	& TTh	8:45am-10:50am	Madsen	LF103			(08/21-12/16)				1040	6h 20m / week		Davis D	Online	3.0		
	& TTh	8:45am-10:50am	Spoto S	LF103		GEOG 12L	EARTH OCEAN CLIMATE: INTRODUCTION TO EARTH SCIENCE LAB						(10/16-12/16)					
	& TTh	8:45am-10:50am	Staff	LF103		0741	Th	9:00am-12:05pm	Hochstaedter	PS106	1.0	HIST 15	HISTORY OF CALIFORNIA					
							(08/24-12/14)				0070	TTh	5:30pm-6:50pm	Serena D	Online	3.0		
												(08/22-12/14)						

SECTION	DAYS	TIME	INSTRUCTOR	ROOM	UNITS	SECTION	DAYS	TIME	INSTRUCTOR	ROOM	UNITS	SECTION	DAYS	TIME	INSTRUCTOR	ROOM	UNITS
HIST 17 UNITED STATES HISTORY TO 1877						HIST 18 UNITED STATES HISTORY FROM 1865						Horticulture					
0032		3h 10m / week (08/21-12/16)	Jeffrey C	Online	3.0	0379		3h 10m / week (08/21-12/16)	Staff	Online	3.0	HORT 51 INTRODUCTION TO HORTICULTURE I					
0041	TTh	2:00pm-3:20pm (08/22-12/14)	Staff	SS101	3.0	0536		3h 10m / week (08/21-12/16)	Finell J	Online	3.0	0181	M	6:00pm-8:50pm & 1h 25m / week (08/21-12/16)	Hofmann J Hofmann J	LS104 Online	3.0
0049		3h 10m / week (08/21-12/16)	Finell J	Online	3.0	0537		6h 20m / week (10/16-12/16)	Jeffrey C	Online	3.0	HORT 61 PLANT IDENTIFICATION: SHRUBS, VINES, AND GROUND COVERS					
0185		6h 20m / week (10/16-12/16)	Jeffrey C	Online	3.0	1105	MW	9:30am-10:50am (08/21-12/13)	Finell J	SS102	3.0	0354	T	5:30pm-8:20pm & 1h 15m / week (08/21-12/16)	Quintanilla Wheat A	LS104 Online	3.0
0534	M	6:30pm-7:50pm & 1h 35m / week (08/21-12/16)	Burkhart S Burkhart S	SS102 Online	3.0	<i>Sections below offered at the MPC's Marina Education Center:</i>						HORT 70 IRRIGATION DESIGN AND WATER ECONOMY					
0879	TF	1:55pm-3:25pm	Joesten D	MaHS	3.0	0053	TTh	11:00am-12:20pm (08/22-12/14)	Finell J	MA404	3.0	0403	W	5:30pm-7:40pm & 1h 10m / week (08/21-12/06)	Kern J Kern J	LF103 Online	3.0
0881	MTh	8:30am-10:00am	Esaki K	SHS	3.0	HIST 25 AFRICAN AMERICANS IN U.S. HISTORY 1865 TO PRESENT											
0883	MTh	10:15am-11:45am	Esaki K	SHS	3.0	0502	MW	11:00am-12:20pm (08/21-12/13)	Batista V	SS104	3.0						
0911	MT	7:45am-8:35am	McCarty J	CHS	3.0												
	& W	7:45am-9:20am	McCarty J	CHS													
0912	MT	8:40am-9:30am	McCarty J	CHS	3.0												
	& Th	8:30am-10:05am	McCarty J	CHS													
0913	MT	2:10pm-3:00pm	McCarty J	CHS	3.0												
	& W	1:35pm-3:10pm	McCarty J	CHS													
0914	MT	10:50am-11:40am	Stafford M	CHS	3.0												
	& Th	10:25am-12:00pm	Stafford M	CHS													
0915	MT	11:45am-12:35pm	Stafford M	CHS	3.0												
	& W	11:20am-12:55pm	Stafford M	CHS													



MONTEREY PENINSULA
College



CALIFORNIA STATE UNIVERSITY
Monterey Bay

2 + 2 PROGRAM

2 Years at MPC = Associate Degree
2 Years at CSUMB = Bachelor Degree

- Biology
- Environmental Science, Technology, & Policy
- Marine Science
- Human Development & Family Science

* All students should meet with a Counselor to create a personalized education plan to help them meet their academic, career, and personal goals. Visit www.mpc.edu/counseling to connect with a Counselor.

SECTION	DAYS	TIME	INSTRUCTOR	ROOM	UNITS	SECTION	DAYS	TIME	INSTRUCTOR	ROOM	UNITS	SECTION	DAYS	TIME	INSTRUCTOR	ROOM	UNITS
---------	------	------	------------	------	-------	---------	------	------	------------	------	-------	---------	------	------	------------	------	-------

Hospitality

HOSP 22 FARM TO TABLE SUSTAINABLE COOKING

0497 F 8:30am-1:35pm Caughman J FC104 1.5
(09/29-12/01)

HOSP 23 CULINARY FOUNDATIONS I

0004 W 3:00pm-8:05pm Caughman J FC104 3.0
(08/23-12/13)

0658 MT 8:30am-1:35pm Jansen M FC104 3.0
(10/02-11/28)

HOSP 27 COTTAGE FOOD BUSINESS

0802 Th 3:30pm-5:35pm Caughman J FC104 1.0
(09/14-11/02)

HOSP 51 INTRODUCTION TO HOSPITALITY

0501 6h 20m / week Jansen M Online 3.0
(08/21-10/14)

HOSP 53 INTRODUCTION TO FOOD AND BEVERAGE MANAGEMENT

0428 6h 20m / week Jansen M Online 3.0
(10/16-12/16)

HOSP 63 HOSPITALITY SUPERVISION

1146 3h 10m / week Jansen M Online 1.5
(10/16-12/16)

HOSP 77 BAKESHOP: YEASTED AND NON-YEASTED BREADS

0622 WTh 8:30am-12:50pm Adam A FC104 1.0
(11/01-11/30)

HOSP 78 BAKESHOP: BASIC BAKING TECHNIQUES

1406 WTh 8:30am-12:50pm Adam A FC104 1.0
(10/04-10/26)

HOSP 84 CHOCOLATE I: INTRODUCTION TO CHOCOLATE

0005 MTWTh 8:30am-12:50pm Adam AFC104 0.5
(09/18-01/21)

HOSP 88 CHOCOLATE II: CONFECTIONS

0499 MTWTh 8:30am-12:50pm Adam A FC104 0.5
(09/18-09/21)

HOSP 422 FARM TO TABLE SUSTAINABLE COOKING

0498 F 8:30am-1:35pm Caughman J FC104 0.0
(09/29-12/01)

HOSP 423 CULINARY FOUNDATIONS I

0228 W 3:00pm-8:05pm Caughman J FC104 00.5
(08/23-12/13)

0659 MT 8:30am-1:35pm Jansen M FC104 0.0
(10/02-11/28)

HOSP 427 COTTAGE FOOD BUSINESS

0803 Th 3:30pm-5:35pm Caughman J FC104 0.0
(09/14-11/02)

HOSP 477 BAKESHOP: YEASTED AND NON-YEASTED BREADS

0662 WTh 8:30am-12:50pm Adam A FC104 0.0
(11/01-11/30)

HOSP 478 BAKESHOP: BASIC BAKING TECHNIQUES

0669 WTh 8:30am-12:50pm Adam A FC104 0.0
(10/04-10/26)

HOSP 484 CHOCOLATE I: INTRODUCTION TO CHOCOLATE

0006 MTWTh 8:30am-12:50pm Adam A FC104 0.0
(09/18-09/21)

HOSP 488 CHOCOLATE II: CONFECTIONS

0500 MTWTh 8:30am-12:50pm Adam A FC104 0.0
(09/18-09/21)

Human Services

HUMS 50 INTRODUCTION TO HUMAN SERVICES AND SOCIAL WORK

0090 T 6:30pm-7:45pm Gable C Online 3.0
& 1h 35m / week Gable C Online
(08/22-12/12)

Humanities

HUMA 40 INTRODUCTION TO FEMINIST THEORY

0742 3h 10m / week Davis D Online 3.0
(08/21-12/16)

Interdisciplinary Studies

INDS 440 INTRODUCTION TO THE MONTEREY STATE HISTORICAL PARK

0544 9h 20m / week Ruh R CCLK 0.0
(08/21-12/16)

Japanese

JPNS 1A ELEMENTARY JAPANESE I

0487 MW 6:00pm-8:25pm Ogaki T HU106 5.0
(08/21-12/13)

JPNS 2A INTERMEDIATE JAPANESE

0202 TTh 6:00pm-8:25pm Ogaki T HU106 5.0
(08/22-12/14)

Kinesiology

KINS 40 INTRODUCTION TO KINESIOLOGY

0258 3h 10m / week O'Hare Online 3.0
(08/21-12/16)

1504 TTh 11:00am-12:20pm O'Hare PE105 3.0
(08/22-12/14)

KINS 41 PREVENTION AND CARE OF ATHLETIC INJURIES

0457 3h 10m / week L Scattini Online 3.0
(08/21-12/16)

KINS 42A ATHLETIC TRAINING FIELD EXPERIENCE I

0576 6h 20m / week L Scattini FFIELD 2.0
(08/21-12/16)

KINS 43 THEORY OF COACHING

1138 3h 10m / week Spiering Online 3.0
(08/21-12/16)

KINS 44 SPORT IN SOCIETY

0831 3h 10m / week O'Hare Online 3.0
(08/21-12/16)

KINS 45 INTRODUCTION TO CAREERS IN SPORTS MEDICINE AND ALLIED HEALTH

0510 6h 20m / week Moore K Online 3.0
(10/16-12/16)

KINS 46 PRINCIPLES OF STRENGTH TRAINING AND CONDITIONING

0824 3h 10m / week Cunningham N Online 3.0
(08/21-12/16)

KINS 50 ORIENTATION FOR ATHLETES AND ATHLETICS

0794 5h 35m / week Spiering Online 2.0
(09/05-10/13)

KINS 51 FITNESS AND WELLNESS STRATEGIES

0825 3h 40m / week Gamble E Online 2.0
(08/28-10/28)

SECTION	DAYS	TIME	INSTRUCTOR	ROOM	UNITS	SECTION	DAYS	TIME	INSTRUCTOR	ROOM	UNITS	SECTION	DAYS	TIME	INSTRUCTOR	ROOM	UNITS
---------	------	------	------------	------	-------	---------	------	------	------------	------	-------	---------	------	------	------------	------	-------

Law Enforcement Training Program

For more information on these and other Law Enforcement Training courses, please visit the South Bay Regional Public Safety Training Consortium website at <http://theacademy.ca.gov/> or call (408) 229-4299.

LETP 130 DEVELOPING A PERSONAL PHILOSOPHY OF LEADERSHIP

1706 12h 50m / week Staff SNJOSE 1.0 (08/25-09/06)

LETP 132 ORGANIZATIONAL LEADERSHIP

0923 2h 45m / week Staff SNJOSE 1.5 (08/16-11/16)

LETP 144A P.O.S.T. INTENSIVE BASIC ACADEMY I

0663 28h 10m / week Staff SNJOSE 12.0 (08/21-12/16)

LETP 144B P.O.S.T. INTENSIVE BASIC ACADEMY II

0407 36h 30m / week Staff SPS104 12.0 (08/21-11/14)

LETP 145A P.O.S.T. BASIC ACADEMY III

1739 20h 30m / week Staff SNJOSE 4.5 (07/11-08/31)

LETP 146 BASIC POLICE REQUALIFICATION COURSE

1219 40h 5m / week Staff SNJOSE 4.0 (09/11-10/06)

LETP 180 CITIZEN'S ACADEMY

0677 3h 0m / week Staff SNJOSE 0.5 (09/11-11/27)

LETP 201 VICE INVESTIGATIONS

1267 39h 5m / week Staff SNJOSE 2.0 (09/06-09/11)

LETP 202 FINANCIAL CRIMES INVESTIGATION

1279 40h 10m / week Staff SNJOSE 2.0 (11/09-11/13)

LETP 203 ROBBERY INVESTIGATIONS

1280 40h 25m / week Staff SNJOSE 1.0 (10/19-10/23)

LETP 204 INVESTIGATION CORE

0665 40h 5m / week Staff SNJOSE 2.0 (09/11-09/22)

0666 40h 5m / week Staff SNJOSE 2.0 (10/09-10/20)

0679 40h 5m / week Staff SNJOSE 2.0 (12/04-12/15)

LETP 205 OFFICER-INVOLVED SHOOTING AND DEATH INVESTIGATION

1282 39h 50m / week Staff SNJOSE 1.0 (11/16-11/20)

LETP 207 HOMICIDE INVESTIGATION

0667 40h 15m / week Staff SNJOSE 2.0 (08/24-09/04)

1300 40h 15m / week Staff SNJOSE 2.0 (12/04-12/15)

LETP 208 CHILD ABUSE INVESTIGATION

1285 40h 10m / week Staff SNJOSE 1.0 (11/09-11/13)

LETP 209 SEXUAL ASSAULT INVESTIGATION

0680 40h 10m / week Staff SNJOSE 1.0 (12/04-12/08)

1286 40h 10m / week Staff SNJOSE 1.0 (10/26-10/30)

LETP 211 HUMAN TRAFFICKING

1268 39h 5m / week Staff SNJOSE 2.0 (08/31-09/04)

LETP 223 DRIVER TRAINING INSTRUCTOR

0700 39h 40m / week Staff SNJOSE 1.0 (08/21-08/25)

LETP 224 DRIVER AWARENESS INSTRUCTOR

0506 32h 45m / week Staff SNJOSE 0.5 (09/02-09/04)

LETP 230 ADVANCED OFFICER COURSE

1176 14h 0m / week Staff SNJOSE 1.0 (10/16-10/27)

LETP231.95 OFFICER SAFETY - FIELD TACTICS

1630 20h 20m / week Staff SNJOSE 0.5 (09/01-09/02)

LETP 232 ADVANCED PEACE OFFICER TRAINING

1215 16h 0m / week Staff SNJOSE 0.5 (11/15-12/16)

LETP 232.4 ADVANCED PEACE OFFICER TRAINING: S.W.A.T. UPDATE

1684 40h 0m / week Staff SNJOSE 1.0 (09/14-09/17)

LETP232.31 ADVANCED PEACE OFFICER TRAINING: ADVANCED S.W.A.T. 40 HOURS

1755 40h 0m / week Staff SNJOSE 1.0 (10/12-10/16)

LETP 233.2 BASIC S.W.A.T. - 80 HOURS

1466 10h 0m / week Staff SNJOSE 2.0 (09/01-12/14)

LETP 233.7 DEFENSIVE TACTICS INSTRUCTOR

1108 40h 0m / week Staff SNJOSE 2.0 (09/08-09/19)

LETP 234 ADVANCED OFFICER SKILLS I

1100 1h 15m / week Staff SNJOSE 0.5 (10/01-12/15)

1196 32h 0m / week Staff SNJOSE 0.5 (11/04-11/07)

LETP 238 TACTICAL PATROL RIFLE INSTRUCTOR

0681 40h 15m / week Staff SNJOSE 1.0 (08/24-08/27)

LETP240.25 SUPERVISORY UPDATE

1742 20h 5m / week Staff SNJOSE 0.5 (08/29-08/31)

LETP 242 PEACE OFFICER ASSOCIATION TRAINING

0404 35h 10m / week Staff SNJOSE 3.5 (08/16-09/15)

LETP 245 FIELD TRAINING PROGRAM

0931 40h 0m / week Staff SNJOSE 13.0

0932 40h 0m / week Staff SNJOSE 14.0

0933 40h 0m / week Staff SNJOSE 15.5

0934 40h 0m / week Staff SNJOSE 16.0

0936 40h 0m / week Staff SNJOSE 17.0

0972 40h 0m / week Staff SNJOSE 15.5

LETP 250 ARREST AND CONTROL/DRIVING (PSP)

1211 1h 10m / week Staff SNJOSE 0.5

LETP 254 DISPATCH FIELD TRAINING PROGRAM

0571 40h 0m / week Staff SNJOSE 13.0

LETP 255 PUBLIC SAFETY DISPATCH

1277 24h 10m / week Staff SNJOSE 3.0 (09/07-10/09)

LETP 280.1 SUPERVISOR COURSE

1308 39h 50m / week Staff SNJOSE 2.0 (09/11-09/22)

LETP 280.2 FIELD TRAINING OFFICER

1593 40h 0m / week Staff SNJOSE 1.0 (11/16-11/20)

LETP 280.3 FIELD TRAINING OFFICER UPDATE

1592 24h 0m / week Staff SNJOSE 0.5 (10/19-10/21)

LETP 290 INSTRUCTOR DEVELOPMENT

1748 41h 35m / week Staff SNJOSE 1.0 & 41h 35m / week Staff SNJOSE (09/21-09/25)

HELPING STUDENTS SUCCEED

The Access Resource Center (ARC) offers academic counseling, specialized instruction and classroom accommodations to students with a verified disability.



- Academic & Testing Accommodations
- Counseling
- High Tech Center (HTC)
- Learning Skills Classes (LNSK)

Contact arcinfo@mpc.edu or call (831) 646-4070 • www.mpc.edu/arc

Learning Skills

LNSK 320 INTRODUCTORY COMPUTER SKILLS LAB

0690 MW 9:30am-10:50am Copeland A HSS101 1.0
(08/21-12/13)

LNSK 325 ASSISTIVE TECHNOLOGY APPLICATIONS

0691 MW 2:00pm-3:20pm Copeland A HSS101 1.0
(08/21-12/13)

LNSK 330 LEARNING STYLES EXPLORATION

0693 Oh 30m / week Lewis V STS115 0.5
(08/21-12/16)

LNSK 331A LEARNING STRATEGIES LAB

0958 TTh 12:30pm-1:50pm Copeland A HSS101 1.0
(08/22-12/14)

LNSK 331B READING SKILLS DEVELOPMENT LAB

0694 TTh 9:30am-10:50am Harlan M HSS102 1.0
(08/22-12/14)

LNSK 331C WRITING STRATEGIES LAB

0697 TTh 11:00am-12:20pm Harlan M HSS102 1.0
(08/22-12/14)

LNSK 332 READING SKILLS DEVELOPMENT

0702 M 9:30am-10:35am Harlan M HSS102 2.0
& W 9:30am-10:20am Harlan M HSS102
(08/21-12/13)

LNSK 333 WRITING SKILLS DEVELOPMENT

0703 M 11:00am-12:05pm Harlan M HSS102 2.0
& W 11:00am-11:50am Harlan M HSS102
(08/21-12/13)

LNSK 341A BEGINNING READING STRATEGIES LAB

0997 TTh 12:30pm-1:50pm Harlan M HSS102 1.0
(08/22-12/14)

LNSK 341B INTERMEDIATE READING STRATEGIES LAB

0999 TTh 12:30pm-1:50pm Harlan M HSS102 1.0
(08/22-12/14)

LNSK 342A BEGINNING WRITING STRATEGIES LAB

1000 MW 12:30pm-1:50pm Harlan M HSS102 1.0
(08/21-12/13)

LNSK 342B INTERMEDIATE WRITING STRATEGIES LAB

1010 MW 12:30pm-1:50pm Harlan M HSS102 1.0
(08/21-12/13)

LNSK 343A BEGINNING MATH STRATEGIES LAB

0699 MW 11:00am-12:20pm Copeland A HSS101 1.0
(08/21-12/13)

0721 TTh 2:00pm-3:20pm Copeland A HSS101 1.0
(08/22-12/14)

LNSK 343B INTERMEDIATE MATH STRATEGIES LAB

0042 MW 11:00am-12:20pm Copeland A HSS101 1.0
(08/21-12/13)

0725 TTh 2:00pm-3:20pm Copeland A HSS101 1.0
(08/22-12/14)

LNSK 347A BEGINNING ASSISTIVE TECHNOLOGY PROJECTS

0692 3h 10m / week Copeland A HSS101 1.0
(08/21-12/16)

0817 3h 10m / week Copeland A Online 1.0
(08/21-12/16)

LNSK 410 JOB READINESS

0706 21h 15m / week Phillips SA HOPE 0.0
(08/21-12/16)

1248 21h 15m / week Jaros R NBI 0.0
(08/21-12/16)

Library Services

LIBR 50 INTRODUCTION TO LIBRARY AND RESEARCH SKILLS

0029 3h 10m / week Easton Online 1.0
(08/21-12/16)

0038 3h 10m / week Easton Online 1.0
(08/21-12/16)

0226 3h 10m / week Thomas E Online 1.0
(08/21-12/16)

0599 3h 10m / week Thomas E Online 1.0
(08/21-12/16)

0600 3h 10m / week Tozier G Online 1.0
(08/21-12/16)

0633 3h 10m / week Duong Online 1.0
(08/21-12/16)

0653 6h 20m / week Tozier G Online 1.0
(10/16-12/16)

Linguistics

LING 10 FOUNDATIONS OF LANGUAGE

0396 4h 15m / week Abend Online 3.0
(08/21-12/16)

LING 15 INTRODUCTION TO LINGUISTICS

0013 3h 10m / week Abend Online 3.0
(08/21-12/16)

LING 18 INTRODUCTION TO LINGUISTIC ANTHROPOLOGY

0220 3h 10m / week Abend Online 3.0
(08/21-12/16)

LING 25 INTRODUCTION TO LANGUAGE AND GENDER

1404 3h 10m / week Abend Online 3.0
(08/21-12/16)

SECTION	DAYS	TIME	INSTRUCTOR	ROOM	UNITS	SECTION	DAYS	TIME	INSTRUCTOR	ROOM	UNITS	SECTION	DAYS	TIME	INSTRUCTOR	ROOM	UNITS
LING 35	INTRODUCTION TO NONVERBAL COMMUNICATION																
0750	3h	10m / week	Abend	Online	3.0												
		(08/21-12/16)															
LING 45	INTRODUCTION TO LANGUAGE AND SOCIETY																
0766	6h	20m / week	Abend	Online	3.0												
		(10/16-12/16)															

Mathematics

MATH 10 MATHEMATICS FOR GENERAL EDUCATION

0236	TTh	9:30am-11:35am	Nguyen T	BMC106	4.0
		(08/22-12/14)			
0749	4h	15m / week	Bishop E	Online	4.0
		(08/21-12/16)			
0983	4h	15m / week	Bishop E	Online	4.0
		(08/21-12/16)			

MATH 12 NUMBER SYSTEMS

0465	MW	2:00pm-4:05pm	Washburn	PS104	4.0
		(08/21-12/13)			

MATH 13 PRE-CALCULUS

0269	MW	11:00am-1:25pm	Washburn	PS102	5.0
		(08/21-12/13)			
0274	TTh	6:00pm-8:25pm	Northup C	PS102	5.0
		(08/22-12/14)			
0282	5h	15m / week	Catania	Online	5.0
		(08/21-12/16)			
0294	TTh	1:30pm-3:55pm	Bishop E	PS102	5.0
		(08/22-12/14)			

Sections below offered in a bilingual Spanish/English format:

0757	TTh	11:00am-1:25pm	Millan S	BMC104	5.0
		(08/22-12/14)			

0806	MW	11:00am-1:25pm	Hebert C	BMC104	5.0
		(08/21-12/13)			

0875	TF	8:10am-10:00am	Lopez D	SHS	5.0
	& W	8:10am-9:40am	Lopez D	SHS	

MATH 13A COLLEGE ALGEBRA FOR STEM

0248	TWTh	9:30am-10:40am	Catania	PS102	4.0
		(08/22-12/14)			

MATH 16 ELEMENTARY STATISTICS

0212	4h	15m / week	Lopez D	Online	4.0
		(08/21-12/16)			
0213	4h	15m / week	Bishop E	Online	4.0
		(08/21-12/16)			
0219	TTh	9:30am-11:35am	Bartow G	PS201	4.0
		(08/22-12/14)			
0224	TTh	11:45am-1:50pm	Nguyen T	BMC106	4.0
		(08/22-12/14)			
0232	MW	6:00pm-8:05pm	Iwamoto L	PS201	4.0
		(08/21-12/13)			

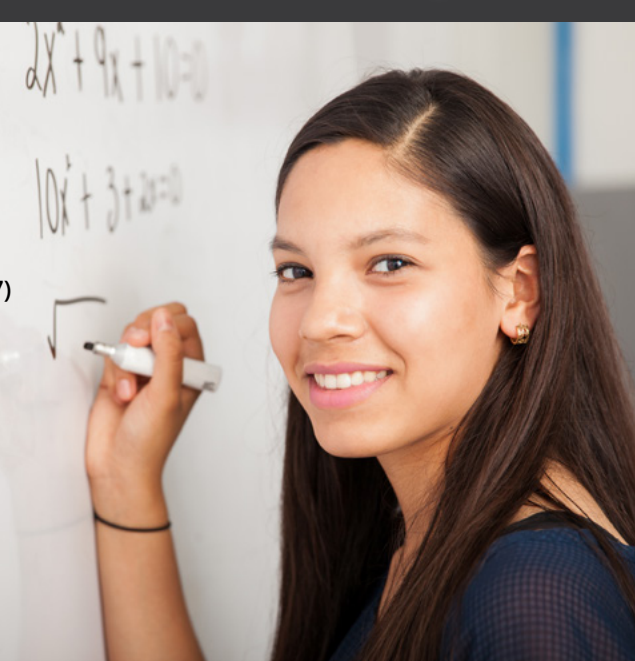
Tomar las clases de Matemáticas en Español

Otoño 2023

Math 13:
Precalculus (Sec 0757)

Math 16:
Statistics (Sec 0762)

Math 20A:
Calculus with
Analytic Geometry
(Sec 0757)



*Estas clases se imparten bilingüe español/inglés.
Todos los estudiantes son bienvenidos a inscribirse.*

0249	MW	11:45am-1:50pm	Lew-Roca L	PS201	4.0
		(08/21-12/13)			
0253	TTh	4:30pm-6:35pm	Iwamoto L	PS201	4.0
		(08/22-12/14)			
0254	TTh	9:30am-11:35am	Cristobal	PS104	4.0
		(08/22-12/14)			
0256	MW	9:30am-11:35am	Nguyen T	BMC106	4.0
		(08/21-12/13)			
0257	4h	15m / week	Lopez D	Online	4.0
		(08/21-12/16)			
0542	4h	15m / week	Spence L	Online	4.0
		(08/21-12/16)			
0621	MW	11:45am-1:50pm	Philly G	BMC106	4.0
		(08/21-12/13)			
0664	MW	2:00pm-4:30pm	Castellani L	BMC106	4.0
		(09/18-12/13)			
0731	5h	35m / week	Spence L	Online	4.0
		(09/18-12/16)			

Sections below offered in a bilingual Spanish/English format:

0762	TTh	6:00pm-8:05pm	Acevedo-Arre	PS104	4.0
		(08/22-12/14)			

0801	TTh	2:00pm-4:05pm	Pickering	PS201	4.0
		(08/22-12/14)			

0811	TTh	11:45am-1:50pm	Spence L	PS201	4.0
		(08/22-12/14)			

0876	TF	8:30am-10:00am	Lew-Roca L	SHS	4.0
	& W	8:30am-9:40am	Lew-Roca L	SHS	

0877	MTh	8:30am-10:00am	Hebert C	MaHS	4.0
	& W	8:30am-9:40am	Hebert C	MaHS	


Sections below offered at the MPC's Marina Education Center:

0223	TTh	8:45am-10:50am	Pickering J	MA402	4.0
		(08/22-12/14)			

0628	TTh	2:00pm-4:05pm	Lopez D	MA402	4.0
		(08/22-12/14)			

SECTION	DAYS	TIME	INSTRUCTOR	ROOM	UNITS	SECTION	DAYS	TIME	INSTRUCTOR	ROOM	UNITS	SECTION	DAYS	TIME	INSTRUCTOR	ROOM	UNITS
---------	------	------	------------	------	-------	---------	------	------	------------	------	-------	---------	------	------	------------	------	-------

**LAUNCH YOUR
Health Career
at MPC**



MPC dental & medical assisting graduates are *in demand* with local employers!

MPC offers a variety of programs for essential healthcare workers

- Community Health Worker
- Dental Assisting
- Medical Assisting
- Medical Insurance and Coding
- Medical Office Administration

Instruction combines online and in-person instruction.

Get started your new career in a growing industry by enrolling for classes at MPC!

Visit www.mpc.edu to learn more!

MATH 17	FINITE MATHEMATICS	0759	4h 15m / week (08/21-12/16)	Spence L	Online	4.0
MATH 18	CALCULUS AND ANALYTIC GEOMETRY FOR BIOLOGY/SOC SCI/ BUSINESS	0299	4h 15m / week (08/21-12/16)	Washburn	Online	4.0
MATH 20A	CALCULUS WITH ANALYTIC GEOMETRY I	0644	W 6:00pm-8:25pm & 2h 35m / week (08/21-12/16)	Washburn	PS102 Online	4.0
0645	MTWTh 8:00am-9:10am (08/21-12/14)	Lake E	PS201	4.0		

Sections below offered in a bilingual Spanish/English format:

0764	MW 11:00am-1:25pm (08/21-12/13)	Millan S	BMC105	4.0		
------	------------------------------------	----------	--------	-----	--	--

0857	TTh 11:00am-1:25pm (08/22-12/14)	Hebert C	PS102	4.0		
------	-------------------------------------	----------	-------	-----	--	--

MATH 20B	CALCULUS WITH ANALYTIC GEOMETRY II	0647	MTWTh 8:00am-9:10am (08/21-12/14)	Catania	PS102	4.0
0886	TTh 1:30pm-3:55pm (08/22-12/14)	Iwamoto L	BMC104	4.0		

MATH 20C	CALCULUS OF SEVERAL VARIABLES	0209	MTWTh 8:00am-9:10am (08/21-12/14)	Cristobal	PS104	4.0
-----------------	--------------------------------------	------	--------------------------------------	-----------	-------	-----

MATH 31	LINEAR ALGEBRA	1001	MW 11:45am-1:50pm (08/21-12/13)	Pickering	PS104	4.0
----------------	-----------------------	------	------------------------------------	-----------	-------	-----

MATH 313	SUPPORT FOR PRE-CALCULUS	0411	W 2:00pm-4:05pm (08/23-12/13)	Bishop E	PS102	0.5
0808	F 11:00am-1:10pm (08/25-12/15)	Hebert C	BMC104	0.5		

MATH 316	SUPPORT FOR ELEMENTARY STATISTICS	0406	F 9:30am-11:40am (08/25-12/15)	Cristobal	PS104	0.5
0624	F 11:45am-1:55pm (08/25-12/15)	Staff	BMC106	0.5		
0813	F 11:45am-1:55pm (08/25-12/15)	Spence L	PS201	0.5		

Sections below offered at the MPC's Marina Education Center:

0405	TTh 4:15pm-5:20pm (08/22-12/14)	Lopez D	MA402	0.5		
------	------------------------------------	---------	-------	-----	--	--

MATH 440	SUPERVISED TUTORING: MATHEMATICS	0682	19h 10m / week (08/21-12/16)	Lake E	BMC103	0.0
0975	17h 45m / week	Lake E	CCAP	0.0		

Medical Assisting

MEDA 100	INTRODUCTION TO HEALTH CAREERS	0198	2h 10m / week (10/16-12/16)	Gensel G	Online	1.0
0684	2h 10m / week (08/21-10/14)	Gensel G	Online	1.0		
0920	M 1:50pm-3:40pm & WThF 1:25pm-2:25pm (11/14-12/15)	Sandoval J Sandoval J	NMCHS NMCHS	1.0		

MEDA 101	ETHICS, LAW AND IT SECURITY IN THE MEDICAL OFFICE	0277	3h 10m / week & 3h 10m / week (08/21-12/16)	Gensel G Singh D	Online	3.0
-----------------	--	------	---	---------------------	--------	-----

MEDA 105	MEDICAL TERMINOLOGY	0687	4h 15m / week (08/21-12/16)	Bell M	Online	4.0
0688	4h 15m / week (08/21-12/16)	Bell M	Online	4.0		
0921	M 1:50pm-3:40pm & WThF 1:25pm-2:25pm (08/14-11/13)	Sandoval J Sandoval J	NMCHS NMCHS	4.0		
1124	8h 25m / week (10/16-12/16)	Gensel G	Online	4.0		

MEDA 110	MEDICAL OFFICE MANAGEMENT	0278	TTh 6:00pm-8:25pm (08/22-12/14)	Gensel G	LS206	3.0
-----------------	----------------------------------	------	------------------------------------	----------	-------	-----

MEDA 112	MEDICAL OFFICE COMPUTER APPLICATIONS	1005	4h 15m / week (08/21-12/16)	Bell M	Online	2.0
-----------------	---	------	--------------------------------	--------	--------	-----

MEDA 113	MEDICAL PROCEDURE CODING	0279	5h 20m / week (08/21-12/16)	Carlson S	Online	3.0
-----------------	---------------------------------	------	--------------------------------	-----------	--------	-----

MEDA 114	MEDICAL INSURANCE MANAGEMENT	1003	3h 10m / week (08/21-12/16)	Bell M	Online	2.0
-----------------	-------------------------------------	------	--------------------------------	--------	--------	-----

MEDA 116	MEDICAL DOCUMENTATION AND TRANSCRIPTION	1006	4h 15m / week (08/21-12/16)	Gensel G	Online	2.0
-----------------	--	------	--------------------------------	----------	--------	-----

MEDA 118	PHARMACOLOGY AND HUMAN DISEASES	1004	3h 10m / week (08/21-12/16)	Bell M	Online	3.0
-----------------	--	------	--------------------------------	--------	--------	-----

MEDA 120	MEDICAL ASSISTING CLINICAL TECHNIQUES I	1126	T 10:30am-12:35pm & T 2:00pm-5:05pm (08/22-12/12)	Bell M Bell M	Online MT2	3.0
-----------------	--	------	---	------------------	---------------	-----

SECTION	DAYS	TIME	INSTRUCTOR	ROOM	UNITS	SECTION	DAYS	TIME	INSTRUCTOR	ROOM	UNITS	SECTION	DAYS	TIME	INSTRUCTOR	ROOM	UNITS
MEDA 121 MEDICAL ASSISTING CLINICAL TECHNIQUES II <i>Sections below offered at the MPC's Marina Education Center:</i> 0281 M 10:30am-12:35pm Gensel G Online 3.0 & M 2:00pm-5:05pm Gensel G MT2 (08/21-12/11)						MUSI 32 JAZZ ENSEMBLE 0195 T 7:00pm-10:05pm Durst A MU101 1.0 (08/22-12/12)						<h2 style="background-color: #444; color: white; padding: 5px;">Nursing</h2> NURS 52A NURSING I 0854 MT 9:00am-11:05am Willingham L IC201 8.5 & 14h 20m / week Willingham L IC201 (08/21-12/12)					
MEDA 122 MEDICAL ASSISTING CLINICAL TECHNIQUES III <i>Sections below offered at the MPC's Marina Education Center:</i> 1536 W 10:30am-12:35pm Bell M Online 3.0 & W 2:00pm-5:05pm Bell M MT2 (08/23-12/13)						MUSI 35 STRING ORCHESTRA 0480 M 7:00pm-10:05pm Dally MU101 1.0 (08/21-12/11)						NURS 52C NURSING III 0859 MT 9:00am-11:25am Miranda M IC204 9.5 & MT 9:00am-11:25am Sullivan E IC204 & 14h 20m / week Hanna IC204 & 14h 20m / week Miranda M IC204 & 14h 20m / week Sullivan E IC204 (08/21-12/12)					
MEDA 130 MEDICAL ASSISTING EXTERNSHIP 1537 10h 0m / week Bell M CLINIC 3.0 (08/21-12/16)						MUSI 37 MARIACHI ENSEMBLE 0494 W 4:30pm-6:35pm Aguilar R MU101 1.0 (08/23-12/13)						NURS 100 PHARMACOLOGY FOR NURSING 0872 3h 10m / week Balestrieri Online 2.0 & 3h 10m / week Sullivan E Online (08/21-12/16)					
<h2 style="background-color: #444; color: white; padding: 5px;">Music</h2> MUSI 1 MUSIC APPRECIATION 0708 3h 10m / week Durst A Online 3.0 (08/21-12/16)						MUSI 40 VOICE FUNDAMENTALS I 0718 TTh 2:00pm-2:50pm Edison K MU101 1.0 (08/22-12/14)						1154 3h 10m / week Balestrieri Online 2.0 & 3h 10m / week Sullivan E Online (08/21-12/16)					
<i>Sections below offered at the MPC's Marina Education Center:</i> 0695 TTh 12:30pm-1:50pm Durst A MA501 3.0 (08/22-12/14)						MUSI 41 VOICE FUNDAMENTALS II 1184 TTh 2:00pm-2:50pm Edison K MU101 1.0 (08/22-12/14)						NURS 150 NURSING PROGRAM READINESS 0357 2h 35m / week Hanna S Online 1.5 (08/21-12/16)					
MUSI 5 INTRODUCTION TO WORLD MUSIC 0486 TTh 3:00pm-4:20pm Collins P LF101 3.0 (08/22-12/14)						MUSI 48A GUITAR I 1131 T 6:30pm-9:35pm Collins P MU102 1.0 (08/22-12/12)						0399 2h 35m / week Hanna S Online 1.5 (08/21-12/16)					
MUSI 10A MUSIC THEORY AND MUSICIANSHIP I 0709 MW 9:30am-11:55am Durst A MU102 4.0 (08/21-12/13)						MUSI 48B GUITAR II 1132 T 6:30pm-9:35pm Collins P MU102 1.0 (08/22-12/12)						0986 2h 35m / week Hanna S Online 1.5 (08/21-12/16)					
MUSI 10B MUSIC THEORY AND MUSICIANSHIP II 0252 TTh 9:30am-11:55am Durst A MU102 4.0 (08/22-12/14)						MUSI 50A PIANO I 0720 TTh 11:00am-11:50am Staff MU115 1.0 (08/22-12/14)						NURS 180A INTRODUCTION TO PROFESSIONAL SKILLS DEVELOPMENT 0746 3h 10m / week Miranda M Online 1.0 & 3h 10m / week Sullivan E Online (08/21-12/16)					
MUSI 10C MUSIC THEORY AND MUSICIANSHIP III 0040 TTh 9:30am-11:55am Durst A MU102 4.0 (08/22-12/14)						MUSI 50B PIANO II 0722 TTh 11:00am-11:50am Staff MU115 1.0 (08/22-12/14)						NURS 180C INTERMEDIATE PROFESSIONAL SKILLS DEVELOPMENT 0748 3h 10m / week Miranda M Online 1.0 & 3h 10m / week Sullivan E Online (08/21-12/16)					
MUSI 20 COLLEGE CHOIR 0493 M 2:00pm-4:05pm Staff MU101 1.0 (08/21-12/11)						MUSI 50C PIANO III 0184 TTh 11:00am-11:50am Staff MU115 1.0 (08/22-12/14)						NURS 204 SUPERVISED NURSING SKILLS LAB I 1545 12h 40m / week Miranda M NU105 4.0 (08/21-12/16)					
MUSI 22 JAZZ CHORAL ENSEMBLE 0192 W 7:00pm-9:05pm Klevan MU101 1.0 (08/23-12/13)						MUSI 50D PIANO IV 0211 TTh 11:00am-11:50am Staff MU115 1.0 (08/22-12/14)						1546 6h 20m / week Miranda M NU105 2.0 (08/21-12/16)					
MUSI 25 APPLIED MUSIC 0183 T 3:00pm-4:05pm Durst A MU102 0.5 (09/05-12/12)						MUSI 495 SPECIAL TOPICS IN MUSIC 0216 T 6:30pm-8:35pm Collins P MU102 0.0 (08/22-12/12)						NURS 206 SUPERVISED NURSING SKILLS LAB III 1256 6h 20m / week Miranda M NU105 2.0 (08/21-12/16)					
MUSI 30 CONCERT BAND 0194 Th 7:00pm-10:05pm Aguilar R MU101 1.0 (08/24-12/14)						0308 TTh 2:00pm-2:50pm Edison K MU101 0.0 (08/22-12/14)						1257 12h 40m / week Miranda M NU105 4.0 (08/21-12/16)					
						0481 M 7:00pm-9:05pm Dally MU101 0.0 (08/21-12/11)											
						0648 Th 7:00pm-9:05pm Aguilar R MU101 0.0 (08/24-12/14)											
						0942 T 7:00pm-9:05pm Durst A MU101 0.0 (08/22-12/12)											
						0985 W 7:00pm-9:05pm Klevan MU101 0.0 (08/23-12/13)											

SECTION	DAYS	TIME	INSTRUCTOR	ROOM	UNITS	SECTION	DAYS	TIME	INSTRUCTOR	ROOM	UNITS	SECTION	DAYS	TIME	INSTRUCTOR	ROOM	UNITS						
Physical Fitness																							
PFIT 2 CORE FITNESS TRAINING						PFIT 17C YOGA III						PFIT 22B FITNESS THROUGH SWIMMING II											
0061	3h 10m / week	(08/21-12/16)	Moore K	FTC206	1.0	0796	MW & F	7:00am-7:50am 7:00am-8:05am	Benavente	DA101	1.0	0409	M & T & W & Th	9:30am-10:35am 9:30am-10:20am 9:30am-10:20am 9:30am-10:35am	Osgood S Smith A Osgood S Smith A	POOL POOL POOL POOL	1.0						
PFIT 6 CROSS-TRAINING						PFIT 17D YOGA IV						PFIT 22C FITNESS THROUGH SWIMMING III											
0064	3h 10m / week	(08/21-12/16)	Villagrana M	FTC206	1.0	0815	3h 10m / week	(08/21-12/16)	Smith A	Online	1.0	0421	M & T & W & Th	11:00am-12:05pm 11:00am-11:50am 11:00am-11:50am 11:00am-12:05pm	Osgood S Smith A Osgood S Smith A	POOL POOL POOL POOL	1.0						
PFIT 7 DISTANCE TRAINING						PFIT 18A AEROBIC FITNESS I						PFIT 22D FITNESS THROUGH SWIMMING IV											
0066	3h 10m / week	(08/21-12/16)	Cunningham N	FTC206	1.0	0830	MW & F	7:00am-7:50am 7:00am-8:05am	Benavente	DA101	1.0	0427	M & T & W & Th	12:30pm-1:35pm 12:30pm-1:20pm 12:30pm-1:20pm 12:30pm-1:35pm	Osgood S Smith A Osgood S Smith A	POOL POOL POOL POOL	1.0						
PFIT 8 AEROBIC CONDITIONING						PFIT 18B AEROBIC FITNESS II						PFIT 23A FUNCTIONAL FITNESS I											
0069	3h 10m / week	(08/21-12/16)	Phillips D	FTC206	1.0	0855	3h 10m / week	(08/21-12/16)	Smith A	Online	1.0	0429	M & T & W & Th	12:30pm-1:35pm 12:30pm-1:20pm 12:30pm-1:20pm 12:30pm-1:35pm	Osgood S Smith A Osgood S Smith A	POOL POOL POOL POOL	1.0						
PFIT 9 PERSONAL FITNESS						PFIT 18C AEROBIC FITNESS III						PFIT 23B FUNCTIONAL FITNESS II											
0082	3h 10m / week	(08/21-12/16)	Spiering	FTC206	1.0	0925	MW	8:00am-9:20am	Benavente	DA101	1.0	0418	M & T & W & Th	9:30am-10:35am 9:30am-10:20am 9:30am-10:20am 9:30am-10:35am	Osgood S Smith A Osgood S Smith A	POOL POOL POOL POOL	1.0						
PFIT 10A BEGINNING WEIGHT TRAINING						PFIT 18D AEROBIC FITNESS IV						PFIT 23C FUNCTIONAL FITNESS III											
0034	3h 10m / week	(08/21-12/16)	Palmer R	FTC206	1.0	0893	MW	8:00am-9:20am	Benavente	DA101	1.0	0423	M & T & W & Th	11:00am-12:05pm 11:00am-11:50am 11:00am-11:50am 11:00am-12:05pm	Osgood S Smith A Osgood S Smith A	POOL POOL POOL POOL	1.0						
0241	TTh 8:00am-9:20am	(08/22-12/14)	Moldenhauer	FTC206	1.0	PFIT 20 CIRCUIT TRAINING						PFIT 23D FUNCTIONAL FITNESS IV											
PFIT 10B INTERMEDIATE WEIGHT TRAINING						PFIT 21A FLEXIBILITY AND RELAXATION TECHNIQUES I						PFIT 23E FUNCTIONAL FITNESS V											
0054	3h 10m / week	(08/21-12/16)	Palmer R	FTC206	1.0	0918	MW	8:00am-9:20am	Benavente	DA101	1.0	0062	3h 10m / week	(08/21-12/16)	Peters D	FTC206	1.0	0429	M & T & W & Th	12:30pm-1:35pm 12:30pm-1:20pm 12:30pm-1:20pm 12:30pm-1:35pm	Osgood S Smith A Osgood S Smith A	POOL POOL POOL POOL	1.0
PFIT 10C ADVANCED WEIGHT TRAINING						PFIT 21B FLEXIBILITY AND RELAXATION TECHNIQUES II						PFIT 23F FUNCTIONAL FITNESS VI											
0060	3h 10m / week	(08/21-12/16)	Palmer R	FTC206	1.0	0819	3h 10m / week	(08/21-12/16)	Benavente	Online	1.0	0927	3h 10m / week	(08/21-12/16)	Benavente	Online	1.0	0419	M & T & W & Th	9:30am-10:35am 9:30am-10:20am 9:30am-10:20am 9:30am-10:35am	Osgood S Smith A Osgood S Smith A	POOL POOL POOL POOL	1.0
PFIT 16A TAI CHI I						PFIT 21C FLEXIBILITY AND RELAXATION TECHNIQUES III						PFIT 23G FUNCTIONAL FITNESS VII											
0805	TTh 9:30am-10:50am	(08/22-12/14)	Staff	DA101	1.0	0730	3h 10m / week	(08/21-12/16)	Benavente	Online	1.0	0408	M & T & W & Th	9:30am-10:35am 9:30am-10:20am 9:30am-10:20am 9:30am-10:35am	Osgood S Smith A Osgood S Smith A	POOL POOL POOL POOL	1.0						
PFIT 16B TAI CHI II						PFIT 22A FITNESS THROUGH SWIMMING I						PFIT 23H FUNCTIONAL FITNESS VIII											
1284	TTh 9:30am-10:50am	(08/22-12/14)	Staff	DA101	1.0	0408	M & T & W & Th	9:30am-10:35am 9:30am-10:20am 9:30am-10:20am 9:30am-10:35am	Osgood S Smith A Osgood S Smith A	POOL POOL POOL POOL	1.0	0420	M & T & W & Th	11:00am-12:05pm 11:00am-11:50am 11:00am-11:50am 11:00am-12:05pm	Osgood S Smith A Osgood S Smith A	POOL POOL POOL POOL	1.0						
PFIT 16C TAI CHI III						PFIT 22B FITNESS THROUGH SWIMMING II						PFIT 23I FUNCTIONAL FITNESS IX											
0787	TTh 9:30am-10:50am	(08/22-12/14)	Staff	DA101	1.0	0420	M & T & W & Th	11:00am-12:05pm 11:00am-11:50am 11:00am-11:50am 11:00am-12:05pm	Osgood S Smith A Osgood S Smith A	POOL POOL POOL POOL	1.0	0430	M & T & W & Th	12:30pm-1:35pm 12:30pm-1:20pm 12:30pm-1:20pm 12:30pm-1:35pm	Osgood S Smith A Osgood S Smith A	POOL POOL POOL POOL	1.0						
PFIT 16D TAI CHI IV						PFIT 22C FITNESS THROUGH SWIMMING III						PFIT 23J FUNCTIONAL FITNESS X											
0795	TTh 9:30am-10:50am	(08/22-12/14)	Staff	DA101	1.0	0408	M & T & W & Th	9:30am-10:35am 9:30am-10:20am 9:30am-10:20am 9:30am-10:35am	Osgood S Smith A Osgood S Smith A	POOL POOL POOL POOL	1.0	0430	M & T & W & Th	12:30pm-1:35pm 12:30pm-1:20pm 12:30pm-1:20pm 12:30pm-1:35pm	Osgood S Smith A Osgood S Smith A	POOL POOL POOL POOL	1.0						
PFIT 17A YOGA I						PFIT 22D FITNESS THROUGH SWIMMING IV						PFIT 23K FUNCTIONAL FITNESS XI											
0807	MW & F	7:00am-7:50am 7:00am-8:05am	Benavente	DA101	1.0	0408	M & T & W & Th	9:30am-10:35am 9:30am-10:20am 9:30am-10:20am 9:30am-10:35am	Osgood S Smith A Osgood S Smith A	POOL POOL POOL POOL	1.0	0430	M & T & W & Th	12:30pm-1:35pm 12:30pm-1:20pm 12:30pm-1:20pm 12:30pm-1:35pm	Osgood S Smith A Osgood S Smith A	POOL POOL POOL POOL	1.0						
1151	3h 10m / week	(08/21-12/16)	Smith A	Online	1.0	PFIT 22E FITNESS THROUGH SWIMMING V						PFIT 23L FUNCTIONAL FITNESS XII											
PFIT 17B YOGA II						PFIT 22F FITNESS THROUGH SWIMMING VI						PFIT 23M FUNCTIONAL FITNESS XIII											
0880	MW & F	7:00am-7:50am 7:00am-8:05am	Benavente	DA101	1.0	0426	M & T & W & Th	12:30pm-1:35pm 12:30pm-1:20pm 12:30pm-1:20pm 12:30pm-1:35pm	Osgood S Smith A Osgood S Smith A	POOL POOL POOL POOL	1.0	0855	TTh 7:00am-8:20am	(08/21-12/13)	Moldenhauer	DA101	1.0						
0919	3h 10m / week	(08/21-12/16)	Smith A	Online	1.0	PFIT 22G FITNESS THROUGH SWIMMING VII						PFIT 23N FUNCTIONAL FITNESS XIV											

SECTION	DAYS	TIME	INSTRUCTOR	ROOM	UNITS	SECTION	DAYS	TIME	INSTRUCTOR	ROOM	UNITS	SECTION	DAYS	TIME	INSTRUCTOR	ROOM	UNITS
PFIT 50	INDEPENDENT FITNESS AND TESTING PROGRAM																
0063	3h	10m / week (08/21-12/16)	Phillips D	Online	1.0												
Physics																	
PHYS 2A	GENERAL PHYSICS I																
0838	MW & Th	9:30am-11:35am 2:00pm-4:50pm (08/21-12/14)	Jewell L	PS207	4.0												
0839	MW & F	9:30am-11:35am 9:30am-12:20pm (08/21-12/15)	Jewell L	PS207	4.0												
PHYS 3A	SCIENCE AND ENGINEERING PHYSICS I																
0840	TTh & T	9:30am-11:35am 2:00pm-4:50pm (08/22-12/14)	Jewell L	PS207	4.0												
0841	TTh & W	9:30am-11:35am 2:00pm-4:50pm (08/22-12/14)	Jewell L	PS207	4.0												
PHYS 3B	SCIENCE AND ENGINEERING PHYSICS II																
0017	TTh & F	9:30am-11:35am 2:00pm-5:05pm (08/21-12/16)	Wei	PS107	4.0												
1345	TTh & M	9:30am-11:35am 2:00pm-4:50pm (08/21-12/14)	Wei	PS107	4.0												
PHYS 10	INTRODUCTION TO PHYSICS																
0843	MW	9:30am-12:35pm (08/21-12/13)	Wei	PS107	4.0												
Physiology																	
PHSO 1	HUMAN PHYSIOLOGY																
0009	MW	5:30pm-6:50pm (08/21-12/13)	Sanculi D	LF102	3.0												
0340	MW	12:30pm-1:50pm (08/21-12/13)	Ambaw A	LF102	3.0												
PHSO 2	HUMAN PHYSIOLOGY LAB																
0844	MW & 1h	10:00am-12:20pm 20m / week (08/21-12/16)	Ambaw A	LS107	2.0												
1160	MW & 1h	2:00pm-4:20pm 20m / week (08/21-12/16)	Sanculi D	LS107	2.0												
1278	MW & 1h	7:00pm-9:20pm 20m / week (08/21-12/16)	Patel R	LS107	2.0												
PHSO 90	INDEPENDENT STUDY																
0833	3h	10m / week (08/21-12/16)	Ambaw A	OFFICE	1.0												
Political Science																	
POLS 1	INTRODUCTION TO AMERICAN GOVERNMENT AND POLITICS																
0055	3h	10m / week (08/21-12/16)	Van Zwaluwen	Online	3.0												
0187	6h	20m / week (10/16-12/16)	Van Zwaluwen	Online	3.0												
0847	3h	10m / week (08/21-12/16)	Serena D	Online	3.0												
0849	TTh	9:30am-10:50am (08/22-12/14)	Banks	SS202	3.0												
0850	TTh	11:00am-12:20pm (08/22-12/14)	Banks	SS202	3.0												
0851	MW	9:30am-10:50am (08/21-12/13)	Staff	SS202	3.0												
POLS 4	INTRODUCTION TO INTERNATIONAL RELATIONS																
0230	MW	11:00am-12:20pm (08/21-12/13)	Belval J	SS102	3.0												
POLS 10	GENDER IN AMERICAN POLITICS																
0098	3h	10m / week (08/21-12/16)	Blanchard L	Online	3.0												
POLS 12	POLITICS IN FILM																
0778	3h	10m / week (08/21-12/16)	Wittschko W	Online	3.0												
Psychology																	
PSYC 1	GENERAL PSYCHOLOGY																
0057	3h	10m / week (08/21-12/16)	Kotecki A	Online	3.0												
0058	3h	10m / week (08/21-12/16)	Kotecki A	Online	3.0												
0155	3h	10m / week (08/21-12/16)	Kotecki A	Online	3.0												
0255	W	6:30pm-9:35pm (08/23-12/13)	Austin T	SS101	3.0												
0712	MW	12:30pm-1:50pm (08/21-12/13)	Lachman L	SS202	3.0												
0861	6h	20m / week (10/16-12/16)	Nicolaides C	Online	3.0												
0862	3h	10m / week (08/21-12/16)	Silva Benitez H	Online	3.0												
0864	MW	11:00am-12:20pm (08/21-12/13)	Lachman L	SS201	3.0												
1567	TTh	11:00am-12:20pm (08/22-12/14)	Silva Benitez H	BMC107	3.0												
<i>Sections below offered at the MPC's Marina Education Center:</i>																	
0866	TTh	9:30am-10:50am (08/22-12/14)	Whitworth R	MA501	3.0												
PSYC 2	EXPLORING CAREERS IN PSYCHOLOGY																
0189	W	11:30am-12:20pm (08/21-12/16)	Conrey S	SS205	1.0												
PSYC 3	INTRODUCTION TO SOCIAL PSYCHOLOGY																
0142	3h	10m / week (08/21-12/16)	Whitworth R	Online	3.0												
0727	3h	10m / week (08/21-12/16)	Whitworth R	Online	3.0												
1354	MW	2:00pm-3:20pm (08/21-12/13)	Lachman L	SS202	3.0												
PSYC 6	PSYCHOLOGY OF WOMEN																
0523	6h	20m / week (10/16-12/16)	Conrey S	Online	3.0												
1036	MW	12:30pm-1:50pm (08/22-12/14)	Conrey S	SS201	3.0												
PSYC 10	INTRODUCTION TO RESEARCH METHODS IN PSYCHOLOGY WITH LAB																
0737	6h	20m / week (08/21-12/16)	Staff	Online	4.0												
1194	TTh	9:00am-12:05pm (08/22-12/14)	Staff	BMC206	4.0												
PSYC 19	INTRODUCTION TO STATISTICS FOR THE SOCIAL SCIENCES																
0190	4h	15m / week (08/21-12/16)	Kotecki A	Online	4.0												
0373	TTh	12:30pm-2:35pm (08/22-12/14)	Staff	GA103	4.0												
PSYC 25	LIFESPAN DEVELOPMENT																
0140	3h	10m / week (08/21-12/16)	Staff	Online	3.0												
0261	TTh	12:30pm-1:50pm (08/22-12/14)	Austin T	SS205	3.0												
0714	MW	9:30am-10:50am (08/21-12/13)	Austin T	BMC107	3.0												
0744	3h	10m / week (08/21-12/16)	Szechter L	Online	3.0												
0869	6h	20m / week (10/16-12/16)	Whitworth R	Online	3.0												
1218	6h	20m / week (08/21-10/14)	Whitworth R	Online	3.0												
PSYC 35	INTRODUCTION TO ABNORMAL PSYCHOLOGY																
1167	T	6:30pm-9:35pm (08/22-12/12)	Triplett R	SS102	3.0												
<i>Sections below offered at the MPC's Marina Education Center:</i>																	
1076	TTh	11:00am-12:20pm (08/22-12/14)	Whitworth R	MA402	3.0												

SECTION	DAYS	TIME	INSTRUCTOR	ROOM	UNITS	SECTION	DAYS	TIME	INSTRUCTOR	ROOM	UNITS	SECTION	DAYS	TIME	INSTRUCTOR	ROOM	UNITS
---------	------	------	------------	------	-------	---------	------	------	------------	------	-------	---------	------	------	------------	------	-------

PSYC 38 BIOLOGICAL PSYCHOLOGY

0174	3h 10m / week		Kotecki A	Online	3.0
	(08/21-12/16)				
0729	TTh 11.00am-12:20pm		Kotecki A	SS102	3.0
	(08/22-12/14)				

Sections below offered at the MPC's Marina Education Center:
 0231 TTh 9:00am-10:20am Kotecki A MA404 3.0
 (08/22-12/14)

PSYC 40 HUMAN SEXUALITY

0873	TTh 9:30am-10:50am		Silva Benitez H	BMC107	3.0
	(08/21-12/13)				

Real Estate

REAL 50 PRINCIPLES OF REAL ESTATE

1591	MW 6:00pm-9:05pm		Jones Becky	Online	3.0
	(08/21-10/11)				

REAL 51 REAL ESTATE PRACTICE

0244	MW 6:00pm-9:05pm		Jones Becky	Online	3.0
	(10/16-12/13)				

REAL 54 REAL ESTATE ECONOMICS

0359	Th 6:00pm-9:20pm		Torres E	Online	3.0
	& 2h 40m / week		Torres E	Online	
	(08/21-10/14)				

REAL 57A REAL ESTATE APPRAISAL I

1186	TTh 6:00pm-9:05pm		Migdale G	Online	3.0
	(10/17-12/14)				

Sociology

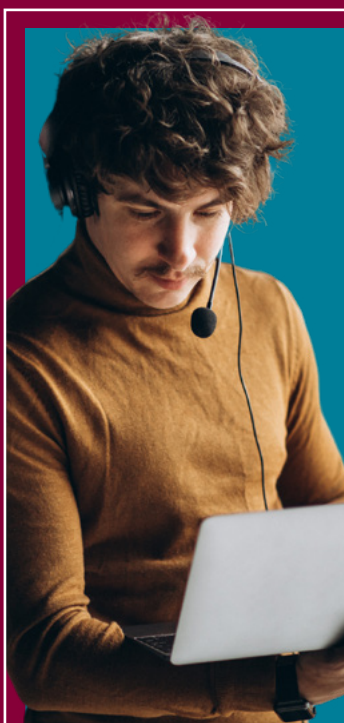
SOCI 1 INTRODUCTION TO SOCIOLOGY

0086	3h 10m / week		White M	Online	3.0
	(08/21-12/16)				
0469	TTh 2:00pm-3:20pm		Villarreal A	SS201	3.0
	(08/22-12/14)				
0882	3h 10m / week		Chap M	Online	3.0
	(08/21-12/16)				

Sections below offered at the MPC's Marina Education Center:
 1172 MW 9:30am-10:50am Villarreal A MA501 3.0
 (08/21-12/13)

SOCI 2 CONTEMPORARY SOCIAL PROBLEMS

0459	TTh 11:00am-12:20pm		Villarreal A	SS201	3.0
	(08/22-12/14)				



Nuevo Título de Asociado en Traducción e Interpretación (Español/Inglés)

Las perspectivas laborales para intérpretes y traductores son sólidas y crecen mucho más rápido que el promedio.

Aprende a brindar servicios de interpretación y traducción en una variedad de industrias, incluidas las comerciales, médicas, educativas y gubernamentales.

LAS CLASES PARA ESTE OTOÑO

SPAN 31 - Introduction to Translation & Interpretation

SPAN 32 - Medical Interpretation

SPAN 36 - Eng/Spn Sight Translation

SOCI 3 INTRODUCTION TO SOCIAL PSYCHOLOGY

0145	3h 10m / week		Whitworth R	Online	3.0
	(08/21-12/16)				
0728	3h 10m / week		Whitworth R	Online	3.0
	(08/21-12/16)				
1421	MW 2:00pm-3:20pm		Lachman L	SS202	3.0
	(08/21-12/13)				

SOCI 11 MASS MEDIA AND POPULAR CULTURE

0553	TTh 9:30am-10:50am		Villarreal A	SS201	3.0
	(08/22-12/14)				

SOCI 12 INTRODUCTION TO GENDER AND SEXUALITY

0376	MW 2:00pm-3:20pm		Staff	SS101	3.0
	(08/21-12/13)				

SOCI 13 INTRODUCTION TO RACE AND ETHNICITY

Sections below offered at the MPC's Marina Education Center:
 0316 MW 11:00am-12:20pm Villarreal A MA501 3.0
 (08/21-12/13)

SOCI 19 INTRODUCTION TO STATISTICS FOR THE SOCIAL SCIENCES

0200	4h 15m / week		Kotecki A	Online	4.0
	(08/21-12/16)				
0375	TTh 12:30pm-2:35pm		Staff	GA103	4.0
	(08/22-12/14)				

SOCI 22 ASIAN PACIFIC AMERICANS IN AMERICAN SOCIETY

0696	6h 20m / week		Cabrera V	Online	3.0
	(10/16-12/16)				

SOCI 40 SOCIOLOGY OF MARRIAGES AND FAMILIES

0885	3h 10m / week		White M	Online	3.0
	(08/21-12/16)				

Spanish

SPAN 1 ELEMENTARY SPANISH I

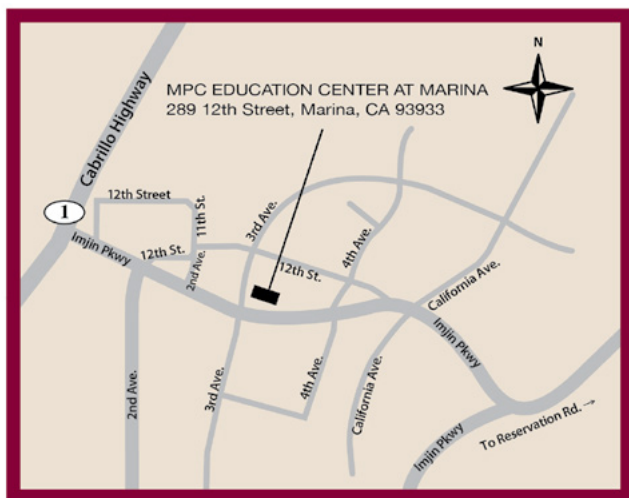
0309	TTh 11:00am-1:25pm		Hernandez Ri	HU210	5.0
	(08/22-12/14)				
0891	TTh 9:00am-10:35am		Sanchez Sulc	Online	5.0
	& 1h 45m / week		Sanchez Sulc	Online	
	(08/29-12/14)				
0892	MW 9:00am-10:35am		Lizano S	Online	5.0
	& 1h 35m / week		Lizano S	Online	
	(08/21-12/16)				
1175	MW 6:00pm-7:35pm		Del Pozo J	Online	5.0
	& 1h 35m / week		Del Pozo J	Online	
	(08/21-12/16)				

Sections below offered at the MPC's Marina Education Center:
 0889 MW 2:00pm-4:25pm Lizano S MA404 5.0
 (08/21-12/13)

SECTION	DAYS	TIME	INSTRUCTOR	ROOM	UNITS	SECTION	DAYS	TIME	INSTRUCTOR	ROOM	UNITS	SECTION	DAYS	TIME	INSTRUCTOR	ROOM	UNITS						
SPAN 1S	ELEMENTARY SPANISH FOR SPANISH SPEAKERS I					SPAN 36	ENGLISH-SPANISH SIGHT TRANSLATION					SPCH 4	INTERCULTURAL COMMUNICATION										
0259	5h 15m / week	(08/21-12/16)	Kamimura H	Online	5.0	0755	Sat	9:00am-10:35am & 1h 25m / week	Borja F Borja F	Online Online	3.0	0050	TTh	12:30pm-1:50pm	King G	HU205	3.0						
0283	TTh 9:00am-10:20am & 2h 25m / week	(08/29-12/14)	Borja F Borja F	Online Online	5.0			(09/02-12/16)				SPCH 5	ORAL INTERPRETATION OF LITERATURE										
0351	5h 15m / week	(08/21-12/16)	Kamimura H	Online	5.0	SPAN 45	HISPANIC AND LATINO/A CULTURE					0214	3h 10m / week	(08/21-12/16)	Sturt	Online	3.0						
0491	M 6:00pm-8:35pm & 2h 50m / week	(08/28-12/11)	Vaquer Ferna Vaquer Ferna	HU101 Online	5.0	0483	W	6:00pm-7:35pm & 2h 35m / week	Vaquer Ferna Vaquer Ferna	Online Online	4.0	Theatre Arts											
0908	TF 1:55pm-3:25pm & W 1:30pm-2:40pm & 0h 45m / week		Hernandez Ri Hernandez Ri Hernandez Ri	SHS SHS SHS	5.0	Speech Communication						THEA 1	INTRODUCTION TO THEATRE										
SPAN 2						SPCH 1						1072	MW	9:30am-10:50am	Staff	TH108	3.0						
1177	TTh 11:00am-12:35pm & 1h 30m / week	(08/21-12/16)	Lizano S Lizano S	Online Online	5.0	0297	MW	9:30am-10:50am	Staff	HU205	3.0	0186	TTh	12:00pm-2:25pm	Staff	TH208	3.0						
1192	MW 6:00pm-7:35pm & 1h 35m / week	(08/21-12/16)	Pico Renteri Pico Renteri	Online Online	5.0	0436	MW	11:00am-12:20pm	Staff	HU205	3.0	THEA 5	FILM APPRECIATION										
SPAN 2S						SPCH 2						1185	T	6:30pm-9:35pm	Shapiro G	Online	3.0						
0260	5h 15m / week	(08/21-12/16)	Cisneros S	Online	5.0	0649	MW	12:30pm-1:50pm	May M	HU206	3.0	0312	TTh	9:00am-10:20am	Staff	TH108	3.0						
0763	MW 1:00pm-2:35pm & 1h 30m / week	(08/21-12/16)	Borja F Borja F	Online Online	5.0	0790	MW	2:00pm-3:20pm	Staff	HU205	3.0	THEA 6	SCRIPT ANALYSIS										
SPAN 3						SPCH 3						0897	TTh	9:30am-10:50am	Cardinale M	HU205	3.0						
0895	MW 11:00am-12:35pm & 1h 35m / week	(08/21-12/16)	Cisneros S Cisneros S	Online Online	5.0	0898	TTh	11:00am-12:20pm	King G	HU205	3.0	0899	3h 10m / week	(08/21-12/16)	Sturt	Online	3.0						
SPAN 3S						SPCH 4						0901	3h 10m / week	(08/21-12/16)	Mohammadi O	Online	3.0						
0527	MW 11:00am-12:35pm & 1h 35m / week	(08/21-12/16)	Vaquer Ferna Vaquer Ferna	Online Online	5.0	1060	6h 20m / week	(08/21-10/14)	Cardinale M	Online	3.0	0901	3h 10m / week	(08/21-12/16)	Mohammadi O	Online	3.0						
SPAN 15						SPCH 5						1303	6h 20m / week	(10/16-12/16)	Cardinale M	Online	3.0						
0235	TTh 6:00pm-7:15pm & 1h 15m / week	(08/21-12/16)	Lizano S Lizano S	Online Online	4.0	<i>Sections below offered at the MPC's Marina Education Center:</i>						0210	MW	9:30am-10:50am	Cardinale M	MA404	3.0						
SPAN 31						SPCH 6						0233	TTh	11:00am-12:20pm	Genauer R	MA403	3.0						
0270	MW 1:00pm-1:50pm & 2h 30m / week	(08/28-12/13)	Vaquer Ferna Vaquer Ferna	Online Online	4.0	0511	3h 10m / week	(08/21-12/16)	Sturt	Online	3.0	THEA 20											
SPAN 32						SPCH 7						0904	MW	9:30am-10:50am	Staff	HU106	3.0	0318	MW	1:00pm-4:30pm	Staff	TH208	3.0
0888	F 9:00am-10:35am & 2h 45m / week	(09/01-12/15)	Borja F Borja F	Online Online	4.0	0905	TTh	9:30am-10:50am	Staff	HU206	3.0	THEA 60B	STUDIO THEATRE - DRAMATIC										
SPAN 33						SPCH 8						0717	MTWThF	4:30pm-6:20pm	Welch A	MHS	3.0	0496	MTWTh	6:00pm-8:50pm	Staff	TH208	3.0
SPAN 34						SPCH 9						<i>Sections below offered at the MPC's Marina Education Center:</i>											
SPAN 35						SPCH 10						1183	MW	12:30pm-1:50pm	Cardinale M	MA404	3.0	THEA 75					
SPAN 36						SPCH 11						ACTING WORKSHOP - ADVANCED COMEDY											
SPAN 37						SPCH 12						0713	12h 40m / week	(09/11-11/05)	Staff	TH208	0.0	THEA 440					
SPAN 38						SPCH 13						REHEARSAL AND PERFORMANCE											
SPAN 39						SPCH 14						World Civilization											
SPAN 40						SPCH 15						See GENTRAIN											
SPAN 41						SPCH 16						World Languages											
SPAN 42						SPCH 17						See											
SPAN 43						SPCH 18						AMERICAN SIGN LANGUAGE											
SPAN 44						SPCH 19						FRENCH											
SPAN 45						SPCH 20						JAPANESE											
SPAN 46						SPCH 21						SPANISH											



Conveniently located for residents of Northwestern Monterey County, MPC’s Education Center at Marina offers a variety of courses for transfer, career technical education, and personal enrichment. On-site services currently available include access to study space and internet, student ID and Library cards, student food pantry, workshops, and other activities. Visit mpc.edu/marina, call (831) 646-4850, or email marinaedcenter@mpc.edu to learn more!



SECTION	DAYS	TIME	INSTRUCTOR	ROOM	UNITS	SECTION	DAYS	TIME	INSTRUCTOR	ROOM	UNITS	SECTION	DAYS	TIME	INSTRUCTOR	ROOM	UNITS
Anatomy						Economics						ENSL 431 LOW-INTERMEDIATE READING AND WRITING					
ANAT 5 HUMAN BIOLOGY						ECON 2 PRINCIPLES OF ECONOMICS: MACRO						1432	MW	6:00pm-8:35pm	Sanders C	MA401	0.0
0968	Sat	9:30am-12:20pm	Bard D	MA104	4.0	0264	T	11:00am-12:30pm	Saha S	MT4	3.0						
	&	3h 10m / week	Bard D	Online			&	1h 20m / week	Saha S	Online							
		(08/21-12/16)						(08/21-12/16)									
Biology						English						ENSL 434 LOW-INTERMEDIATE SPEAKING AND LISTENING					
BIOL 31 INTRODUCTION TO ENVIRONMENTAL SCIENCE						ENGL 1A COLLEGE COMPOSITION						1434	TTh	6:00pm-8:05pm	Lankford T	MA402	0.0
0011	TTh	12:30pm-1:50pm	Staff	MA402	3.0	0056	MW	8:00am-9:20am	Rodger B	MA401	3.0						
		(08/22-12/14)						(08/21-12/13)									
Chemistry						ENGL 2 ARGUMENTATIVE WRITING AND CRITICAL THINKING						ENSL 436 ENGLISH SKILLS FOR SUCCESS II					
CHEM 30A INTRODUCTORY CHEMISTRY FOR HEALTH SCIENCES						0333	MW	12:30pm-1:50pm	Farson J	MA402	3.0	1242	MW	7:00pm-8:20pm	Staff	MA402	0.0
0201	W	5:30pm-8:35pm	Baum J	MA104	4.0			(08/21-12/13)									
	&	3h 10m / week	Baum J	Online		0369	W	6:30pm-9:35pm	Jonker K	MA401	3.0						
		(08/21-12/16)						(08/23-12/13)									
1238	W	1:00pm-4:05pm	Baum J	MA104	4.0	ENGL 101A COLLEGE COMPOSITION PLUS						0412	MW	9:30am-10:50am	Rodger B	MA401	1.0
	&	3h 10m / week	Baum J	Online		0412	MW	9:30am-10:50am	Rodger B	MA401	1.0						
		(08/21-12/16)						(08/21-12/13)									
Communication Studies						English As A Second Language						Ethnic Studies					
COMM 5 MASS MEDIA METHODS						ENSL 321 HIGH-BEGINNING READING AND WRITING						0635	TTh	12:30pm-1:50pm	Cabrera K	MA404	3.0
1223	TTh	11:00am-12:20pm	Osburg	MA401	3.0	0023	MW	6:00pm-8:25pm	Warren N	MA103	5.0						
		(08/22-12/14)						(08/21-12/13)									
Early Childhood Education						ENSL 323 HIGH-BEGINNING SPEAKING AND LISTENING						ETNC 10 INTRODUCTION TO ETHNIC STUDIES					
ECED 51 PRINCIPLES AND PRACTICES OF TEACHING YOUNG CHILDREN						0025	TTh	6:00pm-8:05pm	Lankford T	MA403	4.0	0635	TTh	12:30pm-1:50pm	Cabrera K	MA404	3.0
0495	W	5:00pm-6:20pm	Oswald A	MA404	3.0			(08/22-12/14)									
	&	1h 30m / week	Oswald A	Online		ENSL 331 LOW-INTERMEDIATE READING AND WRITING											
		(08/21-12/16)				1431	MW	6:00pm-8:35pm	Sanders C	MA401	5.0						
ENSL 80 INTRODUCTION TO CURRICULUM						ENSL 334 LOW-INTERMEDIATE SPEAKING AND LISTENING						ETNC 13 INTRODUCTION TO RACE AND ETHNICITY					
0341	Th	6:30pm-7:50pm	Oswald A	MA404	3.0	1433	TTh	6:00pm-8:05pm	Lankford T	MA402	4.0	0317	MW	11:00am-12:20pm	Villarreal A	MA501	3.0
	&	1h 30m / week	Oswald A	Online				(08/22-12/14)									
		(08/21-12/16)				ENSL 336 ENGLISH SKILLS FOR SUCCESS II											
ENSL 421 HIGH-BEGINNING READING AND WRITING						ENSL 423 HIGH-BEGINNING SPEAKING AND LISTENING						Gender & Women's Studies					
0024	MW	6:00pm-8:25pm	Warren N	MA103	0.0	1229	MW	7:00pm-8:20pm	Staff	MA402	1.5	0031	MW	2:00pm-3:20pm	Staff	MA403	3.0
		(08/21-12/13)						(10/16-12/13)									
ENSL 431 LOW-INTERMEDIATE READING AND WRITING						ENSL 434 LOW-INTERMEDIATE SPEAKING AND LISTENING						History					
0026	TTh	6:00pm-8:05pm	Lankford T	MA403	0.0	0026	TTh	6:00pm-8:05pm	Lankford T	MA403	0.0	HIST 18 UNITED STATES HISTORY FROM 1865					
		(08/22-12/14)						(08/22-12/14)				0053	TTh	11:00am-12:20pm	Finell J	MA404	3.0
ENSL 436 ENGLISH SKILLS FOR SUCCESS II						ENSL 438 LOW-INTERMEDIATE READING AND WRITING						Mathematics					
1242	MW	7:00pm-8:20pm	Staff	MA402	0.0	0026	TTh	6:00pm-8:05pm	Lankford T	MA403	0.0	MATH 16 ELEMENTARY STATISTICS					
		(10/16-12/13)						(08/22-12/14)				0223	TTh	8:45am-10:50am	Pickering J	MA402	4.0
ENSL 438 LOW-INTERMEDIATE READING AND WRITING						ENSL 439 LOW-INTERMEDIATE SPEAKING AND LISTENING						MATH 316 SUPPORT FOR ELEMENTARY STATISTICS					
1432	MW	6:00pm-8:35pm	Sanders C	MA401	0.0	0026	TTh	6:00pm-8:05pm	Lankford T	MA403	0.0	0405	TTh	4:15pm-5:20pm	Lopez D	MA402	0.5
		(08/28-12/13)						(08/22-12/14)									
ENSL 439 LOW-INTERMEDIATE SPEAKING AND LISTENING						ENSL 440 LOW-INTERMEDIATE READING AND WRITING						ENSL 441 LOW-INTERMEDIATE SPEAKING AND LISTENING					
1434	TTh	6:00pm-8:05pm	Lankford T	MA402	0.0	0026	TTh	6:00pm-8:05pm	Lankford T	MA403	0.0	0026	TTh	6:00pm-8:05pm	Lankford T	MA403	0.0
		(08/22-12/14)						(08/22-12/14)									

SECTION	DAYS	TIME	INSTRUCTOR	ROOM	UNITS	SECTION	DAYS	TIME	INSTRUCTOR	ROOM	UNITS	SECTION	DAYS	TIME	INSTRUCTOR	ROOM	UNITS
Medical Assisting						Nutrition And Food						Sociology					
MEDA 120	MEDICAL ASSISTING CLINICAL TECHNIQUES I					NUTF 1	NUTRITION					SOCI 1	INTRODUCTION TO SOCIOLOGY				
1126	T	10:30am-12:35pm	Bell M	Online	3.0	0353	TTh	9:30am-10:50am	Lord V	MA401	3.0	1172	MW	9:30am-10:50am	Villarreal A	MA501	3.0
	& T	2:00pm-5:05pm	Bell M	MT2				(08/22-12/14)						(08/21-12/13)			
		(08/22-12/12)															
MEDA 121	MEDICAL ASSISTING CLINICAL TECHNIQUES II					Psychology						SOCI 13	INTRODUCTION TO RACE AND ETHNICITY				
0281	M	10:30am-12:35pm	Gensel G	Online	3.0	PSYC 1	GENERAL PSYCHOLOGY					0316	MW	11:00am-12:20pm	Villarreal A	MA501	3.0
	& M	2:00pm-5:05pm	Gensel G	MT2		0866	TTh	9:30am-10:50am	Whitworth R	MA501	3.0			(08/21-12/13)			
		(08/21-12/11)						(08/22-12/14)									
MEDA 122	MEDICAL ASSISTING CLINICAL TECHNIQUES III					PSYC 35	INTRODUCTION TO ABNORMAL PSYCHOLOGY					Spanish					
1536	W	10:30am-12:35pm	Bell M	Online	3.0	1076	TTh	11:00am-12:20pm	Whitworth R	MA402	3.0	SPAN 1	ELEMENTARY SPANISH I				
	& W	2:00pm-5:05pm	Bell M	MT2				(08/22-12/14)				0889	MW	2:00pm-4:25pm	Lizano S	MA404	5.0
		(08/23-12/13)				PSYC 38	BIOLOGICAL PSYCHOLOGY							(08/21-12/13)			
						0231	TTh	9:00am-10:20am	Kotecki A	MA404	3.0	Speech Communication					
								(08/22-12/14)				SPCH 1	PUBLIC SPEAKING				
Music						Speech Communication						SPCH 3	INTERPERSONAL COMMUNICATION				
MUSI 1	MUSIC APPRECIATION					Speech Communication						1183	MW	12:30pm-1:50pm	Cardinale M	MA404	3.0
0695	TTh	12:30pm-1:50pm	Durst A	MA501	3.0	Speech Communication								(08/21-12/13)			
		(08/22-12/14)				Speech Communication											

Complete Your Degree at MPC's Marina Education Center

Check out these 4 popular transfer programs you can complete in Marina in just 2 years!

- **Business Administration AS-T**
- **Social Justice Studies: Ethnic Studies AA-T**
- **Psychology AA-T**
- **Communication Studies AA-T**



www.mpc.edu/marina

Please visit www.mpc.edu/schedule for the most up-to-date list of classes

MARINA / SEASIDE CAMPUS LOCATIONS	MA Marina Education Center 289 12th Street, Marina	SPS MPC Public Safety Training Center 2642 Colonel Durham Street, Seaside
OFF – CAMPUS LOCATIONS		
AP Ariel Theatrical 320 Main Street, Salinas BPH Bay Park Hotel 1425 Munras Ave., Monterey BSFB Big Sur Volunteer Fire Brigade Pfeiffer Ridge Rd., Big Sur CCLK Central Coast Lighthouse Keepers Pt. Sur State Park, Big Sur CFPD Cachagua Fire Protection District 37200 Nason Rd., Carmel Valley CHS Carmel High School 3600 Ocean Ave., Carmel CLINIC Health Facility Clinic See Program Coordinator HFD Hanford Fire Department 350 West Grangeville Blvd., Hanford	HOPE Hope Building 1663 Catalina St., Sand City HVMS Hidden Valley Music Seminars 88 West Carmel Valley Road, Carmel Valley MCFB Mid Coast Fire Brigade 38841 Palo Colorado Rd., Carmel MCRFPD Monterey County Regional Fire Protection District 19900 Portola Dr., Salinas MFD Monterey Fire Department Pacific & Madison, Monterey MHS Monterey High School 101 Herrmann Dr., Monterey MRNHS Marina High School 2995 Rendova Rd., Marina MTC Mott Training Center 837 Asilomar Blvd, Pacific Grove	MTCA Mott Training Center Annex 2211 Garden Rd., Shop C, Monterey NBI North Bay Industries 1 University Circle, Monterey OC Oldemeyer Center 986 Hilby Ave., Seaside PGHS Pacific Grove High School 615 Sunset Dr., Pacific Grove PRT Pacific Repertory Theater Monte Verde & 8th, Carmel SALLYG Sally Griffin Active Living Center 700 Jewell Ave., Pacific Grove SFD Seaside Fire Department 1635 Broadway Ave., Seaside SHS Seaside High School 2200 Noche Buena, Seaside SNJOSE South Bay Regional Public Safety Training Consortium 3095 Yerba Buena Rd., San Jose

Directory of Student Services

Academic Council Petitions

(831) 645-1377

Student Services Building

Access Resource Center

(831) 646-4070

Jacque Evans
Student Services Building

Admissions & Records

(831) 646-4002 / admissions@mpc.edu

Student Services Building

Articulation

(831) 646-3013

He Seon Ihn
Student Services Building

Assessment Office

(831) 646-4027 / assessment@mpc.edu

Student Services Building

Associated Students of MPC Office

(831) 646-4013

Julie Osborne
Student Center

Basic Needs Center

(831) 645-1361

Melissa Arellano
Student Center

Bookstore

(831) 657-4680

Bookstore Manager
Student Center

CARE / CalWorks

(831) 646-4248

Kacey Giammanco
Student Services Building

Transfer Center

(831) 645-1336

Sudeshna Nand
General Classrooms

Certificate Requirements

(831) 646-4020

Counselors
Student Services Building

Counseling Office

(831) 646-4020

Alethea De Soto
Student Services Building

Dean, Student Services (Marina Ed Center)

(831) 646-4261

LaKisha Bradley
Marina Education Center

Dean, Student Services

(831) 646-3051

Kelly A. Fletes
Student Services Building

Dean, Student Services

(831) 646-4220

Wendy Bates
Athletics / Kinesiology

Dual Enrollment

(831) 646-4282 / dualenrollment@mpc.edu

Early Childhood Education Lab School

(831) 646-4066

Jeff Procrive
Early Childhood Education Lab School

EOPS Office

(831) 646-4247

Eric Ogata
Student Services Building

Financial Aid (Student Financial Services)

(831) 646-4030

Kelli Bostwick
Student Services Building

First Year Experience

(831) 646-4165

Jacinto Salazar III
General Classrooms

Graduation Requirements

(831) 646-4020

Counselors
Student Services Building

Health Services

(831) 646-4017

LeAnn Contapay
Student Services Building

Hispanic Serving Institution (HSI) & Grants

(831) 645-7500

General Classrooms

Housing Information

(831) 646-4192

Julie Osborne
Student Center

International Students

(831) 645-1380

Marina Education Center

(831) 646-4850 / marinaedcenter@mpc.edu

Math / Science Upward Bound

(831) 645-1306

Parking Permits Purchase

(831) 646-4002

Policies and Regulations, Student

(831) 646-4155

Probation and Disqualification

(831) 645-1377

Registration

(831) 646-4002 / admissions@mpc.edu

Residency

(831) 646-4002 / admissions@mpc.edu

Scholarships

(831) 646-4030

Security

(831) 646-4099 / (831) 646-4292

Sexual Harrassment / Sexual Misconduct

(831) 646-4850 / titleIX@mpc.edu

Student Accounts

(831) 646-4046

Student Activities & Clubs

(831) 646-4192

Student Center

(831) 646-4192

Student Conduct

(831) 646-4155

Student Employment

(831) 646-4195

Student Equity & Achievement

(831) 646-4261 / seaprogram@mpc.edu

Student Outreach & Retention

(831) 646-4845

Title IX

(831) 646-4850 / titleIX@mpc.edu

TRIO Student Support Services (SSS)

(831) 646-4246

Transcripts

(831) 646-4002 / admissions@mpc.edu

UMOJA

(831) 646-4027

Undocumented Resource Center

undocu@mpc.edu

Upward Bound

(831) 646-4089

Veterans Assistance Office

(831) 646-4025 / (831) 646-4020

Welcome Center

(831) 646-4136

Alethea DeSoto

Student Services Building

LaKisha Bradley

Jasmine Do

Student Services Building

Online via WebReg

VP of Student Services

Administration Building

Student Services Building

Admissions & Records

Student Services Building

Admissions & Records

Student Services Building

Student Financial Services

Student Services Building

Student Center

Human Resources

Fiscal Services

Administration Building

Julie Osborne

Student Center

Julie Osborne

Student Center

VP of Student Services

Administration Building

Lien Nguyen

General Classrooms

LaKisha Bradley

Student Services Building

Jacinto Salazar III

General Classrooms

Human Resources

Grace Anongchanya

Student Services Building

Admissions & Records

Student Services Building

General Classrooms

General Classrooms

Sandra Washington

Student Services Building

Eileen Crutchfield

Student Center

Jacinto Salazar III

General Classrooms



MPC

FOUNDATION

MONTEREY PENINSULA COLLEGE

Thank you Business Partners for supporting MPC students!



Monterey

CREDIT UNION



Buena Vista
Land Company



1st Capital Bank
CLA (CliftonLarsonAllen)
Central Coast Federal Credit Union

HGHB Architects
Vanderbilt CPAs

Cardinale Moving & Storage

Lozano Smith, LLP

Monterey Trust Management





MONTEREY PENINSULA College

980 Fremont Street, Monterey, CA 93940
(831) 646-4000 | www.mpc.edu

Non-Profit Org.
U.S.
PAID
Monterey Peninsula
Community College

Residential Customer

ECRWSS

Alphabetical Index

- ADM** ADMINISTRATION
- AC** ART & CERAMICS
- AD** ART DIMENSIONAL
- AG** ART GALLERY
- AMP** AMPHITHEATRE
- AS** ART STUDIO
- AT** AUTOMOTIVE TECHNOLOGY
- BMC** BUSINESS, MATH, COMPUTUING
- DA** DANCE & ADAPTIVE PE
- ECE** EARLY CHILDHOOD EDUCATION
- FA** FACILITIES
- FC** FAMILY & CONSUMER SCIENCE
- FTC** FITNESS / TRAINING CENTER
- GA** GRAPHIC ARTS
- GC** GENERAL CLASSROOMS
- GYM** GYMNASIUM / PE / KINESIOLOGY
- HU** HUMANITIES
- HSS** HUMANITIES / SUPPORT SERVICES
- IC** INTERNATIONAL CENTER
- LF** LECTURE FORUM
- LTC** LIBRARY & TECHNOLOGY CENTER
- LS** LIFE SCIENCES
- MU** MUSIC
- MV** MODULAR VILLAGE
- NU** NURSING
- PS** PHYSICAL SCIENCE
- SC** STUDENT CENTER
- SS** SOCIAL SCIENCE
- STS** STUDENT SERVICES
- T-100** PRIE (RESEARCH) OFFICE
- TH** THEATRE

Legend

- Accessibility Elevator
- Automated External Defibrillator
- Book Drop (Library)
- First Aid / Nurse
- Gender-Inclusive Restroom
- Information (831) 646-4000
- Lactation Room
- Parking Permit Kiosk
- Restrooms
- Security (831) 646-4099

