

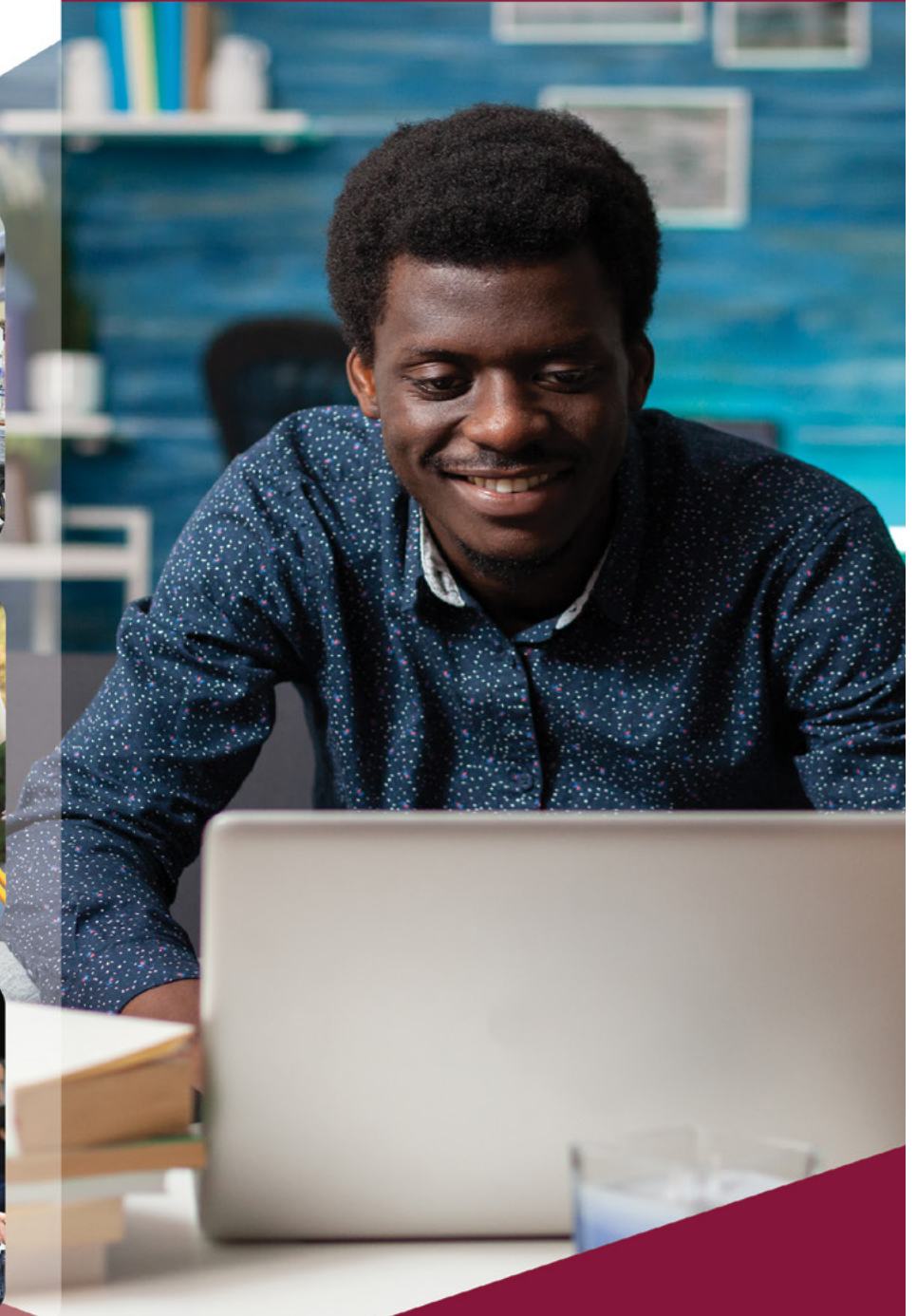


**MONTEREY PENINSULA**  
College

[www.mpc.edu](http://www.mpc.edu)

# SPRING 2022

## CLASS SCHEDULE



**MPC IS YOUR \$MART CHOICE**

**Monterey Peninsula  
College Governing Board  
of Trustees:**

- Ms. Yuri Anderson, Chair - Area 2
- Dr. Loren Steck, Vice Chair - Area 5
- Ms. Debeliah "Debbie" Anthony,  
Trustee - Area 4
- Ms. Elizabeth "Libby" Downey,  
Trustee - Area 3
- Ms. Rosalyn Green, Trustee - Area 1
- Ms. Nathalie Daoud, Student  
Trustee

**Monterey Peninsula College** is a community college accredited by the Western Association of Schools and Colleges. The college is open to high school graduates and all others 18 years of age or older who may profitably pursue a course of study. Students in grades 6-12 may attend with written approval from their school principal and their parent(s) prior to registering. Students in grades 6-8 need additional approval from the Dean of Student Services.

**Call Admissions & Records at (831) 646-4002 or email [admissions@mpc.edu](mailto:admissions@mpc.edu) for registration information**

All Monterey Peninsula College written publications will be made available in alternative formats (print, Braille, audiotape, or e-text). Requests for alternate media should be made to Access Resource Center at (831) 646-4070.

**MPC Smoking Policy:**  
Refer to MPC Board Policy #3570 for information about smoking and all forms of tobacco use on District property.

## Important Information Regarding MPC's COVID-19 Mandate

On October 13, 2021, the MPC Board of Trustees approved an updated Communicable Disease Policy (Board Policy 5210) requiring all students to be fully vaccinated against COVID-19. **This Policy will go into effect starting in Spring 2022.**

Please visit [www.mpc.edu/vaccine](http://www.mpc.edu/vaccine) for more details, including:

- timelines and methods for submitting vaccine proof;
- information regarding exemptions for medical or religious purposes; and
- what happens if you fail to show proof or request an exemption by the deadline.

# COVID-19 Vaccinations Mandated for Spring 2022



*All students must be fully vaccinated before the beginning of the semester*



If you are planning on taking classes at MPC in Spring, we strongly suggest that you begin taking steps to get vaccinated now if you have not already done so (the process takes over a month).



go to [www.mpc.edu/vaccine](http://www.mpc.edu/vaccine) for all the latest updates

# Calendar of Important Dates

## Early Spring Session 2022

January 3 to January 20, 2022

<b>November 15, 2021</b>	Priority registration begins
<b>Dec. 23, 2021 - Dec. 31, 2021</b>	Campus closed for Winter Break
<b>January 2, 2022</b>	Last day to register through WebReg without an add code
<b>January 3, 2022</b>	Early Spring classes begin
<b>TBD</b>	Drop/Add/Refund dates: please see class website
<b>January 17, 2022</b>	HOLIDAY: Dr. Martin Luther King Jr. Day
<b>January 20, 2022</b>	Early Spring classes end

## Spring Session 2022

January 21 to May 27, 2022

<b>October 11, 2021</b>	Application period begins
<b>November 15, 2021</b>	Priority registration begins
<b>January 20, 2022</b>	Last day to register through WebReg without an add code
<b>January 21, 2022</b>	Classes begin
<b>January 21 - February 5</b>	Late registration – add codes required for registration
<b>February 5</b>	Last day to drop semester-length courses and be eligible for a refund
<b>February 5</b>	Last day to add a semester-length course with an add code
<b>February 6</b>	Last day to drop semester-length courses without a “W” grade
<b>February 7</b>	Census Day
<b>February 18</b>	HOLIDAY: Lincoln’s Day Observance
<b>February 19</b>	Last day to request pass/no pass grade option for semester-length courses
<b>February 21</b>	HOLIDAY: Washington’s Day Observance
<b>March 21 - 26</b>	SPRING RECESS
<b>March 31</b>	Cesar Chavez Day Commemoration
<b>April 15</b>	Application deadline for May graduation
<b>April 27</b>	Last date to drop semester-length courses and receive “W” grade
<b>May 23 - 27</b>	Final Examinations
<b>May 27</b>	End of semester
<b>May 27</b>	Commencement

**Information:** (831) 646-4000

**Admission & Records:**

(831) 646-4002 or  
admissions@mpc.edu

**TTY:** (831) 645-1319

**Web Registration (WebReg):**

www.mpc.edu

**Campus Security:**

(831) 646-4099

**Counseling:**

(831) 646-4020

**Assessment Center:**

(831) 646-4027

**Child Development Center:**

(831) 646-4066

**Bookstore:**

(831) 657-4680

**Library:**

(831) 646-4095

**Marina Education Center:**

(831) 646-4850

**MPC Public Safety**

**Training Center:**

(831) 646-4240

**Financial Aid:**

(831) 646-4030

### Schedule Changes

Adds and/or Drops can be made by WebReg 24 hours a day online.

If course registration is not completed before the term begins, students must attend class, request an add code from the instructor and use WebReg to register during the late registration period.

### STUDENT SERVICES:

Admissions & Records Office  
(831) 646-4002  
[www.mpc.edu/admissions](http://www.mpc.edu/admissions)

# When to Register

**Registering for MPC classes is easy!** It is recommended that you register as early as possible to get the classes that you want.

Web Registration (WebReg) at [www.mpc.edu](http://www.mpc.edu) open 24 hours per day.  
Computers and WebReg assistance available in the Student Services Building.

## Priority Registration

**CONTINUING STUDENTS** are students enrolled at MPC during Fall 2021.

**RETURNING STUDENTS** are students who enrolled at MPC previously, but not in Fall 2021.

**NEW AND NEW TRANSFER STUDENTS** are students who have never enrolled at MPC.

**DUAL ENROLLMENT STUDENTS** are students who are currently in grades 6-12.

PRIORITY	GROUP	PRIORITY DATE
Priority 1	Active Military, Veterans, Foster Youth, Homeless Youth, ARC, EOPS & CalWORKS. Students must be either continuing MPC students in good standing <sup>1</sup> (up to 99.9 units <sup>2</sup> ) or fully matriculated <sup>3</sup> if new or returning	November 15
Priority 2	Student Athletes, ASMPC Officers and students in the following programs: First Year Experience, Teacher Pathway Program, Umoja, and TRIO. Students must be either continuing MPC students in good standing <sup>1</sup> (up to 99.9 units <sup>2</sup> ) or fully matriculated <sup>3</sup> if new or returning	November 17
Priority 3	Continuing MPC students in good standing <sup>1</sup> with 30.0-99.9 units in progress and on file	November 19
Priority 4	Continuing MPC students in good standing <sup>1</sup> with 0.0-29.5 units in progress and on file	November 22
Priority 5	New fully matriculated <sup>3</sup> students	November 24
Open Registration	Open Registration for all other New and Returning students, dual enrolled students (grades 6-12), and continuing MPC students with 99.9+ units in progress and on file	November 29

<sup>1</sup> **In good standing:** student who is NOT on academic or progress dismissal or who is not on any probation for the last two consecutive semesters (Foster Youth will not lose priority and need to be manually adjusted)

<sup>2</sup> **100 unit:** once a student reaches 100 units, he/she loses priority limit includes only degree applicable units (MPC courses numbered 1-299)

<sup>3</sup> **Fully Matriculated:** Student has completed Assessment, Orientation, and has an Education Plan on file for the term priority registration is for.

## Late Registration

January 21, 2022 - February 5, 2022

Attend the first class, request an Add Code from the instructor and register using WebReg. Need assistance?  
Please visit Admissions & Records in the Student Services Building or call **(831) 646-4002**.

**Please note: There are many drawbacks to registering late. Classes would have already begun; the classes you want may already be filled; and counseling will be limited. So register early!**

# Steps for New Students

New students should complete each of the following steps in order to be cleared for registration.

## STEP 1. APPLICATION

Complete application online at [www.mpc.edu](http://www.mpc.edu)

1. Click on “**Apply for Admission**”
2. Follow the instructions on CCCApply to submit an application.

## STEP 2. FINANCIAL AID

Students who need assistance paying their fees are encouraged to submit the FAFSA ([fafsa.ed.gov](http://fafsa.ed.gov)) or DREAM Act ([dream.csac.ca.gov](http://dream.csac.ca.gov)) application before they register for classes.

See page 8 for more Financial Aid information.

## STEP 3. ASSESSMENT & PLACEMENT

Students receive English & math placement recommendations within five minutes of completing the Application for Admission. Recommendations can be adjusted using Guided Self Placement and answering questions regarding comfort levels with the concepts and skills necessary for success in English as a Second Language and transfer-level English and/or math coursework. Please see our website for the most current information and procedures. See assessment information on our website at [www.mpc.edu/assessment](http://www.mpc.edu/assessment) or call (831) 646-4027.

## STEP 4. ORIENTATION

Choose one of the following:

- A) Register for PERS 10, **OR**
- B) Complete the orientation online or in person. Please review the following website: [www.mpc.edu/orientation](http://www.mpc.edu/orientation) or call (831) 646-4845.

## STEP 5. COUNSELING/ADVISEMENT (EDUCATION PLAN)

Choose one of the following:

- A) Complete the Education Plan online at: [www.mpc.edu/counseling](http://www.mpc.edu/counseling), **OR**
- B) Complete the Education Plan with a counselor. Call (831) 646-4020 for an appointment or make your appointment online through WebReg.

## STEP 6. REGISTRATION

Register for classes online, via WebReg at [www.mpc.edu](http://www.mpc.edu)

# Your **ONLINE** education is just a *click away!*

**MPC has something for *everyone* and online classes for *all types* of learners!**

Looking for convenience and flexibility to fit a busy schedule?  
- Learn on your own time with an asynchronous class.

Looking for more human interaction and engagement?  
- Try a synchronous class. Meet online on a specific schedule just like you do on campus!

**Launch *your* future by enrolling in one of MPC's engaging online courses today!**

[www.mpc.edu/onlinecourses](http://www.mpc.edu/onlinecourses)



# How to Register

## Who may use WebReg

**Continuing Students:** Students who enrolled at MPC for the previous term. (Students in grades 6-12 are always considered new and must always submit an Application for Admission and an approved Dual Enrollment Form.

**Returning Students:** Students who enrolled at MPC before, but not the previous term.

**New and Transfer Students:** Students who have submitted their Application for Admission. Read the information about the Step Program in this schedule or contact the Counseling Department.

## WebReg Clearance

**Students who are not paying their own fees:** Students included in this group are those using Vocational Rehabilitation (Chapter 31), VA CalVet, State Department of Rehabilitation, etc. Students are responsible for all fees unless appropriate forms are received by the Admissions & Records Office within the first two weeks of the term

**Students who have been dismissed from Monterey Peninsula College:** Students must petition for readmission through the Academic Council. Check your petition status on WebReg 48 hours after Academic Council review (2nd and 4th Tuesdays).

## Welcome to WebReg (Web Registration) [www.mpc.edu](http://www.mpc.edu)

**Registration in more than 18 units:** Students must have counselor approval if registering for more than 18 units in a semester.

**U.S. Military Tuition Assistance:** Once the approved Tuition Assistance form is submitted to the Admissions & Records Office, registration may be permitted.

**U.S. Military Dependents using nonresident free exemption:** Signatures are required on the U.S. Military Dependent Residence Statement every semester/session of enrollment. Registration fees are the responsibility of the student unless the form is submitted to the Admissions & Records Office within the first two weeks of the term.

**International Students:** All students on F-1 or M-1 visas and students not possessing permanent resident visas: Approval from International Student Program office is required.

**6th-12th Grade Students:** Students in grades 6-12 and who are at least 12 years of age must complete an Application for Admission and a Dual Enrollment Form. Registration is permitted after both forms are completed and submitted to the Admissions & Records Office. Students in grades 6-8 must have additional approval from the Dean of Student Services. Call (831) 645-1377 to schedule an appointment. No approvals will be granted after the term begins.

# Spring 2022 Cost and Payment Information

### Course Fees

Enrollment Fee	\$46 per unit
Nonresident Fee*	\$292 per unit
Instructional Material Fee	Varies

### Optional Fees

Child Development Center Donation	\$3
Daily Parking Permit	\$3
Annual Parking Permit	\$95
Semester Parking Permit	\$53

### Payment

Students may log into their WebReg portal and pay fees. Additionally, fees may be paid in person at the Fiscal Services Office located in the Administration Building.

\*Nonresident and international students are charged both enrollment and nonresident fees per unit for course registration.

In addition, international (F1 visa) students may have other fees. Please visit: [www.mpc.edu/internationalstudents](http://www.mpc.edu/internationalstudents) for more information.

### Term/Session Fees

Health Fee	\$20
Student Center Use Fee	\$10
Student Body Fee	\$10
Student Representative Fee	\$2

As per the college catalog, all fees and tuition charges are subject to change without prior notification.

For more detailed information on current fees, waivers, and refunds please visit: [www.mpc.edu/admissions/fees-payments-refunds](http://www.mpc.edu/admissions/fees-payments-refunds)

## WebReg Worksheet

To access WebReg, Monterey Peninsula College requires students to use their Student ID Number (if known), otherwise students may use their Social Security Number to access their Student Portal.

### WebReg Hours:

[www.mpc.edu](http://www.mpc.edu)

24 hours per day

### WebReg Help Line Hours:

Monday-Thursday: 9:00 am - 4:00 pm

Friday: 9:00 am - 12:00 pm

Call (831) 646-4002

**Guidelines:** Complete the worksheet on the right of this page before logging in. Have a list of alternate courses, as some of the classes may be closed.

**NOTE:** *If you were not registered at MPC in the previous term, and have not submitted an Application for Admission for the term you wish to register for, registration will be denied.*

If you have changed your mailing address, telephone number and/or email address, update the information on WebReg.

The fastest, most secure way to pay for classes is through WebReg with a VISA or MasterCard. Need an alternative? There is a drop box outside the Administration Building to drop off payments.

**Computers and WebReg assistance available at the Admissions & Records Office in the Student Services Building.**

Priority registration for Spring classes begins November 15, 2021

**WebReg Helpline**  
(831) 646-4002

## To Register by WebReg:

1. Visit MPC's web site ([www.mpc.edu](http://www.mpc.edu)).
2. Click on WebReg (at the top of the website).
3. For initial entry
  - **ID Number** (enter your SSN if you do not know your student ID number)
  - **PIN** (enter your 8-digit birth date (MMDDYYYY), no spaces)
4. Click Login.
5. If asked, update your PIN. It is your responsibility to remember the PIN you enter. From this point, you will be using this PIN when accessing your WebReg account.
6. You are now in your WebReg account. Update your information, if needed  
**PLEASE READ THE INSTRUCTIONS PRINTED ON EACH SCREEN**
7. To register, click on Add/Drop/Register.
8. Select the semester/session in which you are registering.
9. Enter the 4-digit section number of the class(es) you wish to register into the "Enter Section Number box, click the "Add to Cart" button.

4 Digit Section #	Course	Units	Day(s)	Time

If the course you entered has the option of being taken for Letter Grade or P/NP (Pass/No Pass), you must now choose the grading option for which you wish to take the course. Click the option of your choice. Consult a counselor with questions.

The information related to the section number you entered appears. If this is the correct course and you wish to add additional courses, click "More Schedule Changes." Continue this process until you have requested all your courses.

If you have chosen the wrong course, click the shopping cart under the Remove button to drop the course.

10. After you have enrolled in all your desired courses, continue your registration by clicking on "Checkout"
11. The amount of money you owe for this transaction appears. **You must choose a payment option to finalize your registration.** If you clicked on payment to be made by check or cash, please complete the WebReg Payment Slip and submit your payment to Fiscal Services located in the Administration Building.
12. **When adding or dropping courses, ALWAYS PRINT YOUR RECEIPT.** This will be your record of the courses that you have added and/or dropped.
13. **If you need to make schedule changes at a later time,** you must FIRST drop the courses that you no longer wish to take and then add the classes that you want to take instead.
14. If you wish to purchase a Parking Permit, click Purchase Optional Fees. Parking permits will be mailed to students. Make sure your address is current in WebReg. Parking permits will begin to be mailed a few weeks before the term begins. Payment must be received before permits can be mailed out. So order and pay early!

# Financial Aid Information

## What is Financial Aid?

Financial aid is the money you receive from federal, state and local programs to help you meet the expenses (books, enrollment fee, food, rent, and transportation) of a college education. Student Financial Services provides different types of financial aid, such as grants, scholarships, work-study, and Direct Student Loans. **THE PRIMARY RESPONSIBILITY OF PAYING COLLEGE COSTS RESTS WITH YOU AND YOUR PARENTS.**

## Who is eligible?

You do not need to be low-income to be eligible for financial aid, but you must demonstrate financial need. Your financial need is the difference between the cost of attendance and your expected family contribution. If you would like to apply for financial, APPLY NOW!

## How do I apply?

To be considered for financial aid, you will need to complete the Free Application for Federal Student Aid (FAFSA) as soon as possible at <https://fafsa.gov> or the Dream Act Application at [www.csac.ca.gov/dream\\_act.asp](http://www.csac.ca.gov/dream_act.asp) Student Financial Services will notify you of any required documents to complete your financial aid file or you can check your financial aid portal.

## What are the General Eligibility Requirements?

In order to be eligible for federal, state, and institutional financial aid programs, a student must meet the following requirements:

- Must be accepted for admission and enrolled in an eligible academic program.
- Must have a High School Diploma or the equivalent (GED), or have received the California High School Proficiency Examination (CHSPE).
- Must be making satisfactory academic progress (SAP), whether or not you received financial aid.
- Must be a U.S. Citizen or eligible non-citizen with a valid Social Security Number for Federal aid.
- Must be in compliance with Selective Service Registration requirements.
- Must have resolved any drug conviction issues.
- Must not be in default on any Federal Loan Program or in repayment of any Federal Grant Programs.
- Must demonstrate financial need.

## What is Financial Aid Satisfactory Academic Progress?

In order to show financial aid satisfactory academic progress during a given semester, you must:

- Earn cumulative grade point averages of at least 2.0 ("C" average);
- Complete 2/3 of the units you attempt cumulatively and complete your degree within the 150% maximum time frame (90 units attempted.)
- For the California College Promise Grant, maintain 2.0 GPA and complete 50% of attempted units each semester and overall.

## What are my responsibilities as a student receiving Financial Aid?

As a student receiving financial aid, you are required to:

- Sign up for an MPC email account.
- Notify Student Financial Services of any change in your name, marital status, Social Security Number or income.
- Respond immediately to all correspondence sent to you by the Student Financial Services office, the Federal or State Student Aid Programs.
- Register for your classes, and complete all requirements for financial aid.
- Maintain satisfactory academic progress.

*\*Please note that it is the student's responsibility to pay any outstanding fees to MPC.*

## What is the deadline to apply for Financial Aid?

The Free Application for Federal Student Aid (FAFSA) becomes available October 1st of every year. The application for financial aid has to be completed every year you are planning to attend school. There is a priority deadline which is March 2nd, so it is encouraged to apply early.

## How can I check on my status?

There are a few ways to check on your status, They are:

- Visiting the financial aid office in the Student Service Building.
- Sending an email from your MPC email account.
- Through WebReg Portal under My Financial Aid.

## When will I know if I am eligible for Financial Aid?

Once you have completed the financial aid application process, your eligibility for financial aid will be determined. Student Financial Services will email you a financial aid award letter. The award letter will inform you of the amount and types of financial aid you will be eligible to receive. If you are not eligible to receive financial aid, Student Financial Services will notify you by email as well.

## What about fee waivers?

- **California College Promise Grant (CCPG):** This California-funded fee waiver program assists students who are classified as California residents with the mandatory Enrollment Fee.
- **CCPG Method A:** Assists students who are receiving public assistance, or are dependents of a parent on public assistance.
- **CCPG Method B:** Assists students as determined by the California Income Standards.
- **CCPG Method C:** Assists students who have completed the FAFSA and have \$1,104 in need. This is determined by Student Financial Services.
- **MPC PROMISE SCHOLARSHIP:** First Time-Full Time Students, First and Second Year Tuition Free! See website at: [www.mpc.edu/promise](http://www.mpc.edu/promise).

## HOW DO I APPLY FOR STUDENT LOANS?

To apply for student loans, you will need to complete the steps listed at: <https://www.mpc.edu/financial-aid/applications/direct-federal-student-loan>

Student Financial Services is located in the Student Services building. Please refer to the Financial Aid website for office hours. Contact Student Financial Services for assistance at **(831) 646-4030**, send an email to [financialaid@mpc.edu](mailto:financialaid@mpc.edu), or visit our website at [www.mpc.edu/financial-aid](http://www.mpc.edu/financial-aid).



**DID YOU KNOW  
YOU CAN TAKE  
COLLEGE CLASSES  
WHILE YOU'RE IN  
HIGH SCHOOL?**



**Now is a great time to earn college credit!**



# Attend College Tuition-Free with the MPC Promise

Monterey Peninsula College is proud to offer the **MPC Promise**, a free in-state tuition program that will cover college enrollment fees, for all first-time, 1<sup>st</sup> and 2<sup>nd</sup> year students attending full time.

Visit [www.mpc.edu/promise](http://www.mpc.edu/promise) to learn more about the MPC Promise.

## Need Cash For College?



Over \$400,000 in  
Scholarship Monies  
Awarded Annually!

Through the generous gifts from local community members, the MPC Foundation provides over 160 scholarships annually to MPC students and incoming high school graduates through a combination of endowed, named, and unrestricted gifts.

*All students are welcome to apply.*

Visit [www.mpc.edu/scholarships](http://www.mpc.edu/scholarships) to learn more about MPC scholarships, the application process, and deadlines

SECTION	DAYS	TIME	INSTRUCTOR	ROOM	UNITS	SECTION	DAYS	TIME	INSTRUCTOR	ROOM	UNITS	SECTION	DAYS	TIME	INSTRUCTOR	ROOM	UNITS
---------	------	------	------------	------	-------	---------	------	------	------------	------	-------	---------	------	------	------------	------	-------

# Early Spring Courses

## Athletics

### ATHL 20.8 SKILL DEVELOPMENT FOR TENNIS

4794 11h 20m / week Tran T CTS 0.5  
(01/03-01/20)

### ATHL 21 COMPETITIVE GOLF

0000 MTWThF 1:00pm-3:20pm Russo J BHB 0.5  
(01/03-01/20)

### ATHL 29 VARSITY ATHLETIC CONDITIONING

0717 11h 20m / week Carroll M TRACK 0.5  
(01/03-01/20)

1040 11h 20m / week Moore K PE201 0.5  
(01/03-01/20)

4795 11h 20m / week O'Hare PE201 0.5  
(01/03-01/20)

4796 11h 20m / week Phillips D BFIELD 0.5  
(01/03-01/20)

4798 11h 20m / week Berg W SFIELD 0.5  
(01/03-01/20)

4799 11h 20m / week Spiering PE201 0.5  
(01/03-01/20)

## Automotive Technology

### AUTO 105 AUTOMOTIVE ELECTRICAL CIRCUITS

0871 MTWThF 8:00am-1:35pm Lawrence J AT103 2.5  
(01/03-01/20)

## Dental Assisting

### DNTL 107 CORONAL POLISH

0899 MTWThF 12:30pm-4:50pm Hopkins Carp LS202 0.5  
& MTWThF 12:30pm-4:50pm Miller L LS202  
(01/03-01/10)

4155 MTWThF 7:45am-12:05pm Hopkins Carp LS202 0.5  
& MTWThF 7:45am-12:05pm Topper M LS202  
(01/03-01/10)

### DNTL 108 PIT AND FISSURE SEALANTS

0907 MTWThF 12:30pm-4:50pm Hopkins Carp LS202 0.5  
& MTWThF 12:30pm-4:50pm Miller L LS202  
(01/11-01/19)

4156 MTWThF 7:45am-12:05pm Hopkins Carp LS202 0.5  
& MTWThF 7:45am-12:05pm Topper M LS202  
(01/11-01/19)

## English As A Second Language

### ENSL 337 LOW-INTERMEDIATE ESL FOR THE WORKPLACE

0380 MTWTh 9:00am-12:10pm Gorman D HU202 2.0  
(01/03-01/20)

### ENSL 437 LOW-INTERMEDIATE ESL FOR THE WORKPLACE

0383 MTWTh 9:00am-12:10pm Gorman D HU202 0.0  
(01/03-01/20)

## Fire Protection Technology

### FPTC 100 RESCUE SYSTEMS 1: BASIC RESCUE SKILLS

1089 42h 25m / week Smith C CDFGR 1.0  
(01/03-01/07)

### FPTC 112D INSTRUCTOR I - INSTRUCTIONAL METHODOLOGY

1093 40h 40m / week Smith C CDFGR 1.0  
(01/17-01/21)

### FPTC 130C COMPANY OFFICER 2C - FIRE INSPECTIONS AND INVESTIGATIONS

0509 41h 10m / week Goodwin MCOFTO 2.0  
(01/03-01/07)

# ENROLL IN A FIRST RESPONDER TRAINING PROGRAM AT MPC!

Our instructors, with real world work experience in Fire, Law Enforcement, and EMT, will guide you through developing the knowledge and skills you need to become an essential worker serving your community.

[www.mpc.edu/pstc](http://www.mpc.edu/pstc)



SECTION	DAYS	TIME	INSTRUCTOR	ROOM	UNITS	SECTION	DAYS	TIME	INSTRUCTOR	ROOM	UNITS	SECTION	DAYS	TIME	INSTRUCTOR	ROOM	UNITS
<b>FPTC 135 ETHICAL LEADERSHIP</b>						<b>LETP 233.7 DEFENSIVE TACTICS INSTRUCTOR</b>											
1085		8h 25m / week (01/14-01/14)	Staff	SPS119	0.5	0030		40h 0m / week (01/03-01/14)	Vaughn Linda	SNJOSE	2.0						
<b>FPTC 401 COMMUNITY EMERGENCY RESPONSE TRAINING</b>						<b>LETP240.25 SUPERVISORY UPDATE</b>											
1094		24h 25m / week (01/10-01/14)	Staff	SPS119.0.0		0749		20h 5m / week (01/04-01/06)	Vaughn Linda	SNJOSE	0.5						

## Humanities

<b>HUMA 30 HUMANITIES IN MULTICULTURAL AMERICA</b>					
0456	MTWThF	9:00am-12:35pm (01/03-01/20)	Ramsden-Scot	HU105	3.0

## Law Enforcement Training Program

<b>LETP 205 OFFICER-INVOLVED SHOOTING AND DEATH INVESTIGATION</b>					
0997		39h 50m / week (01/03-01/07)	Vaughn Linda	SNJOSE	1.0
<b>LETP 207 HOMICIDE INVESTIGATION</b>					
0560		40h 15m / week (01/03-01/14)	Vaughn Linda	SNJOSE	2.0
<b>LETP 209 SEXUAL ASSAULT INVESTIGATION</b>					
0632		40h 10m / week (01/10-01/14)	Vaughn Linda	SNJOSE	1.0
1119		40h 10m / week (01/10-01/14)	Vaughn Linda	SNJOSE	1.0
<b>LETP 230 ADVANCED OFFICER COURSE</b>					
0673		25h 25m / week (11/30-01/21)	Vaughn Linda	SNJOSE	3.0
<b>LETP 232 ADVANCED PEACE OFFICER TRAINING</b>					
0377		1h 40m / week (10/16-01/23)	Vaughn Linda	SNJOSE	0.5
0427		2h 25m / week (10/30-01/23)	Vaughn Linda	SNJOSE	0.5
0429		2h 10m / week (11/06-01/23)	Vaughn Linda	SNJOSE	0.5

<b>LETP 242 PEACE OFFICER ASSOCIATION TRAINING</b>					
0692		34h 35m / week (12/10-01/21)	Vaughn Linda	SNJOSE	4.0
1152		32h 0m / week (01/18-01/21)	Vaughn Linda	SNJOSE	1.0
<b>LETP 245 FIELD TRAINING PROGRAM</b>					
0524		40h 0m / week	Vaughn Linda	SNJOSE	15.5
0536		40h 35m / week	Vaughn Linda	SNJOSE	18.0
0552		41h 25m / week	Vaughn Linda	SNJOSE	16.0
<b>LETP 255 PUBLIC SAFETY DISPATCH</b>					
0687		17h 15m / week (11/09-12/28)	Vaughn Linda	SNJOSE	3.0
<b>LETP 280.2 FIELD TRAINING OFFICER</b>					
0839		40h 0m / week (12/27-12/31)	Vaughn Linda	SNJOSE	1.0

## Learning Skills

<b>LNSK 410 JOB READINESS</b>					
0415		30h 0m / week (01/03-01/20)	Phillips SA	HOPE	0.0
4718		30h 0m / week (01/03-01/20)	Jaros R	NBI	0.0

## Philosophy

<b>PHIL 2 INTRODUCTION TO PHILOSOPHY</b>					
0447		17h 0m / week (01/03-01/20)	Provost	Online	3.0
<b>PHIL 4 MORAL ISSUES</b>					
0015		17h 0m / week (01/03-01/20)	Provost	Online	3.0
<b>PHIL 10 INTRODUCTION TO CRITICAL THINKING</b>					
0478		17h 0m / week (01/03-01/20)	Provost	Online	3.0

## Physical Fitness

<b>PFIT 14 EXERCISE FOR HEALTH AND FITNESS</b>					
4817		8h 25m / week (01/03-01/20)	Villagrana M	FTC206	0.5

## Speech Communication

<b>SPCH 1 PUBLIC SPEAKING</b>					
0439		17h 0m / week (01/03-01/20)	Sturt	Online	3.0
0822	MTWThF	9:00am-12:35pm (01/03-01/20)	Baumback J	Online	3.0
1011		17h 0m / week (01/03-01/20)	Staff	Online	3.0
1012		17h 0m / week (01/03-01/20)	Sturt	Online	3.0
1159		17h 0m / week (01/03-01/20)	Staff	Online	3.0



EARNING DEGREES  
TRANSFER READINESS  
CAREER PREPARATION

TRANSFORMING, ENRICHING,  
AND ADVANCING LIVES OF STUDENTS

MPC's Umoja Learning Community is a program designed to assist African American and other historically underrepresented students. Umoja is specifically designed to increase the retention, success, graduation, and transfer rates of African ancestry students by integrating academics, support services and African-American culture.

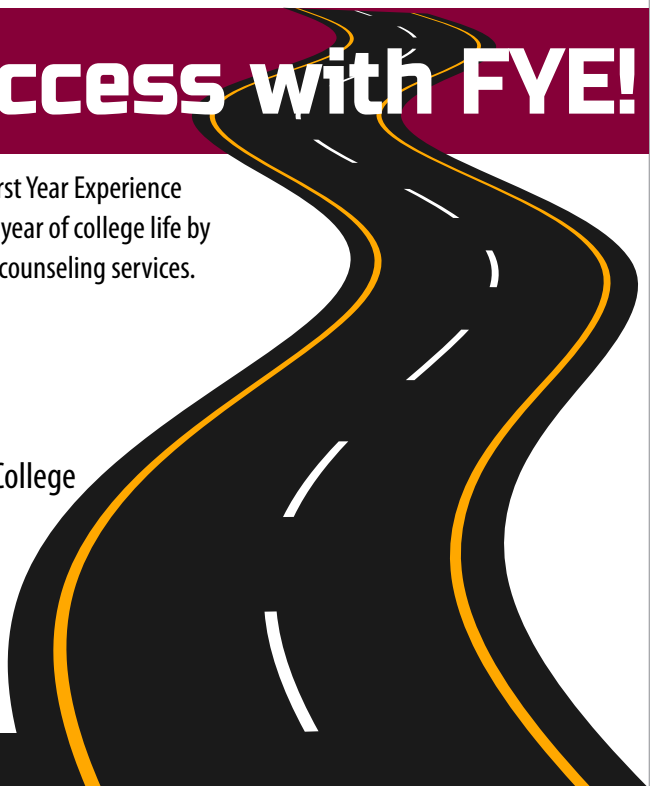
Learn how you can join the MPC Umoja Learning Community at [www.mpc.edu/umoja](http://www.mpc.edu/umoja).

# Guarantee Your Success with FYE!

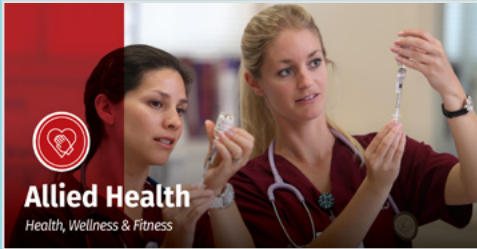
Starting a new educational journey can be exciting and overwhelming. The First Year Experience program is community-based, designed to help you be successful in your first year of college life by providing a supportive, caring environment with the educational, career, and counseling services.



- Early Registration
- FYE Learning Community
- Peer Mentors
- Strategies for Success in College
- Field Trips & Activities
- Bilingual Coordinators



# WHAT'S YOUR **PATH?**



MPC's Career and Academic Pathways (CAPs) can help you explore our educational programs and find your ideal match.



Explore our pathways  
[www.mpc.edu/cap](http://www.mpc.edu/cap)

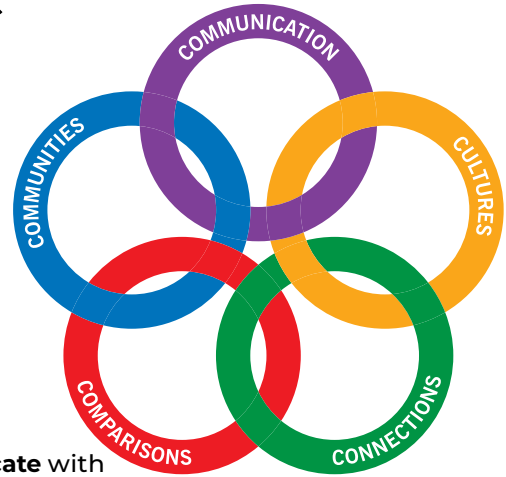


SECTION	DAYS	TIME	INSTRUCTOR	ROOM	UNITS	SECTION	DAYS	TIME	INSTRUCTOR	ROOM	UNITS	SECTION	DAYS	TIME	INSTRUCTOR	ROOM	UNITS
---------	------	------	------------	------	-------	---------	------	------	------------	------	-------	---------	------	------	------------	------	-------

# LEARN A LANGUAGE AT MPC



- AMERICAN SIGN LANGUAGE**
- FRENCH**
- JAPANESE**
- SPANISH (native and non-native speakers)**



Learning another language gives you the opportunity to **communicate** with other **communities**, make **connections** and **comparisons** with other **cultures**, and understand yourself in different worlds.

Visit [mpc.edu/languages](http://mpc.edu/languages) to learn more!

## Spring Courses

### Adapted Physical Education

<b>ADPE 10</b>	<b>ADAPTED WEIGHT TRAINING</b>
0354	MWF 11:00am-11:50am Ventimilia S DA104 1.0
<b>ADPE 13</b>	<b>PHYSICAL EDUCATION: ADAPTED</b>
0355	MTWThF 9:00am-9:50am Ventimilia S DA104 1.5
<b>ADPE 14</b>	<b>ADAPTED AEROBICS</b>
0356	MTWThF 10:00am-10:50am Ventimilia S DA104 1.0
<b>ADPE 15</b>	<b>HEART HEALTHY EXERCISE</b>
0357	MTWThF 8:00am-8:50am Ventimilia S DA104 1.5

### Administration Of Justice

<b>ADMJ 2</b>	<b>INTRODUCTION TO ADMINISTRATION OF JUSTICE</b>
0337	6h 20m / week Turner J. Online 3.0 (01/24-03/18)
4966	MW 9:30am-10:45am Turner J. SS102 3.0
<b>ADMJ 4</b>	<b>CONCEPTS OF CRIMINAL LAW</b>
4967	6h 20m / week Turner J. Online 3.0 (03/28-05/20)

Sections below offered at the MPC Education Center in Marina:  
 0391 TTh 2:00pm-3:15pm McNamara, M MA404 3.0

<b>ADMJ 51</b>	<b>CRIMINAL COURT PROCESS</b>
0151	TTh 11:00am-12:15pm Turner J. SS104 3.0
<b>ADMJ 53</b>	<b>POLICE FIELD OPERATIONS</b>
0191	T 6:30pm-9:20pm McGuirk R SPS106 3.0
<b>ADMJ 68</b>	<b>INTRODUCTION TO FORENSICS</b>
0054	W 6:30pm-9:20pm Drown-Delfin SPS106 3.0
<b>ADMJ 70</b>	<b>JUVENILE PROCEDURES</b>
0152	W 12:30pm-1:45pm Turner J. SS201 3.0
	& 1h 25m / week Turner J. Online

### American Sign Language

<b>SIGN 1A</b>	<b>ELEMENTARY AMERICAN SIGN LANGUAGE I</b>
4889	TTh 11:00am-1:15pm Stack K HU112 5.0
<b>SIGN 1AL</b>	<b>ELEMENTARY AMERICAN SIGN LANGUAGE I LAB</b>
0297	TTh 3:30pm-5:05pm Stack K HU112 1.0 (02/08-05/19)
0450	TTh 3:30pm-4:20pm Stack K HU112 0.5 (02/08-05/19)
<b>SIGN 1B</b>	<b>ELEMENTARY AMERICAN SIGN LANGUAGE II</b>
0298	MW 11:00am-1:15pm Stack K HU112 5.0

<b>SIGN 1BL</b>	<b>ELEMENTARY AMERICAN SIGN LANGUAGE II LAB</b>
0451	TTh 3:30pm-4:20pm Stack K HU112 0.5 (02/08-05/19)
0915	TTh 3:30pm-5:05pm Stack K HU112 1.0 (02/08-05/19)
<b>SIGN 1CL</b>	<b>INTERMEDIATE AMERICAN SIGN LANGUAGE I LAB</b>
0006	TTh 3:30pm-5:05pm Stack K HU112 1.0 (02/08-05/19)
0453	TTh 3:30pm-4:20pm Stack K HU112 0.5 (02/08-05/19)
<b>SIGN 1DL</b>	<b>INTERMEDIATE AMERICAN SIGN LANGUAGE II LAB</b>
0011	TTh 3:30pm-5:05pm Stack K HU112 1.0 (02/08-05/19)
0455	TTh 3:30pm-4:20ppm Stack K HU112 0.5 (02/08-05/19)
<b>SIGN 20</b>	<b>INTRODUCTION TO DEAF CULTURE</b>
0243	3h 0m / week Stack K Online 3.0

### Anatomy

<b>ANAT 1</b>	<b>HUMAN ANATOMY</b>
0495	TTh 1:00pm-1:50pm Ambaw A LF102 2.0
0815	M 12:00pm-1:50pm Faust H LF101 2.0
0819	2h 0m / week Ambaw A Online 2.0
4969	TTh 6:00pm-6:50pm Faust H LF101 2.0



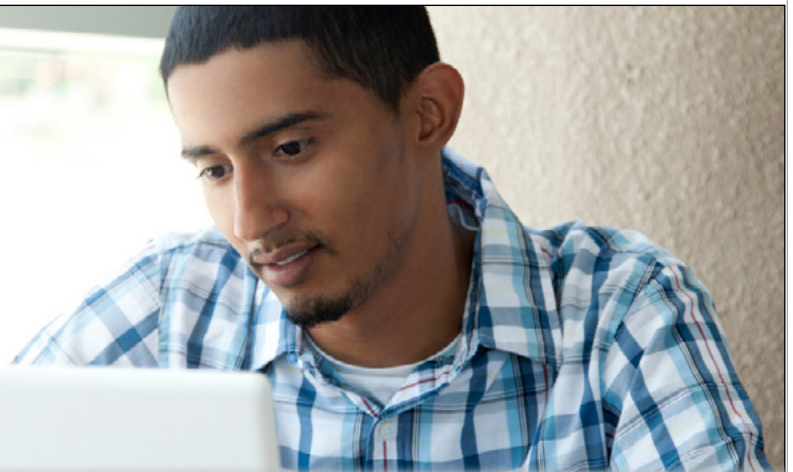
# Don't worry ... we've got the support you need to succeed!



- **MPC Library**  
[www.mpc.edu/library](http://www.mpc.edu/library)
- **Math Learning Center**  
[www.mpc.edu/mlc](http://www.mpc.edu/mlc)
- **Reading & Writing Center**  
[www.mpc.edu/rwc](http://www.mpc.edu/rwc)
- **STEM CEL**  
[www.mpc.edu/stemcel](http://www.mpc.edu/stemcel)
- **Tutoring & Academic Success Center**  
[www.mpc.edu/tasc](http://www.mpc.edu/tasc)

Visit us on the Student Services Hub in Canvas!

## GET READY TO TAKE AN **ONLINE** CLASS



**Complete the online orientation course to prepare for success!**

We can assist you with the technology you need, like free WiFi and a Chromebook. Our online education support staff, librarians, math, English, STEM, and TASC tutors are available to help you with your classes, too!

**To learn more, visit [www.mpc.edu/online](http://www.mpc.edu/online)**



SECTION	DAYS	TIME	INSTRUCTOR	ROOM	UNITS	SECTION	DAYS	TIME	INSTRUCTOR	ROOM	UNITS	SECTION	DAYS	TIME	INSTRUCTOR	ROOM	UNITS
<b>ANAT 2 HUMAN ANATOMY LAB</b>																	
0795	TTh	8:00am-9:50pm	Ambaw A	LS211	2.0												
	&	2h 0m / week	Ambaw A	Online													
0829	MW	2:00pm-4:50pm	Staff	LS211	2.0												
0836	MW	6:00pm-8:50pm	Ahmed O	LS211	2.0												
0842	TTh	2:00pm-4:50pm	Ambaw A	LS211	2.0												
	&	2h 0m / week	Ambaw A	Online													
0845	MW	10:00am-11:50am	Faust H	LS211	2.0												
	&	2h 0m / week	Faust H	Online													
4002	MW	8:00am-9:50am	Faust H	LS211	2.0												
	&	2h 0m / week	Faust H	Online													
4005	Sat	8:00am-11:50am	Ambaw/Faust	LS211	2.0												
	&	2h 0m / week	Ambaw A	Online													
4971	TTh	7:10pm-9:00pm	Faust H	LS211	2.0												
	&	2h 0m / week	Faust H	Online													
<b>ANAT 5 HUMAN BIOLOGY</b>																	
0649	3h 0m / week		Sanculi D	Online	4.0												
	& TTh	11:00am-12:15pm	Sanculi D	LS107													
0847	6h 0m / week		Noel M	Online	4.0												
0850	3h 0m / week		Sanculi D	Online	4.0												
	& Sat	9:00am-11:50am	Sanculi D	LS107													
4006	TTh	9:30am-10:45am	Craig H	LS107	4.0												
	& TTh	11:00am-12:15pm	Craig/Sanculi	LF101													
4007	TTh	11:00am-12:15pm	Craig/Sanculi	LF101	4.0												
	& TTh	12:30pm-1:45pm	Sanculi D	LS107													
6502	3h 0m / week		Bard D	Online	4.0												
	& M	6:00pm-8:50pm	Bard D	Online													
<b>Anthropology</b>																	
<b>ANTH 2 INTRODUCTION TO BIOLOGICAL ANTHROPOLOGY</b>																	
0522	MW	9:30am-10:45am	Michaels G	SS205	3.0												
4014	TTh	9:30am-10:45am	Kary E	SS205	3.0												
4015	3h 0m / week		Kary E	Online	3.0												
4016	3h 0m / week		Kary E	Online	3.0												
<b>ANTH 2L BIOLOGICAL ANTHROPOLOGY LABORATORY</b>																	
0659	W	11:00am-1:50pm	Michaels G	SS205	1.0												
4017	3h 0m / week		Michaels G	Online	1.0												
<b>ANTH 4 INTRODUCTION TO CULTURAL ANTHROPOLOGY</b>																	
0501	TTh	11:00am-12:15pm	Kary E	SS205	3.0												
4973	3h 0m / week		Kary E	Online	3.0												
<b>Art - Basics</b>																	
<b>ARTB 2 VISUAL FUNDAMENTALS: TWO-DIMENSIONAL DESIGN</b>																	
1017	TTh	9:30am-12:20pm	Lara C	AC101	3.0												
<b>ARTB 4 COLOR FUNDAMENTALS</b>																	
1035	TTh	9:30am-12:20pm	Thorson C	AS101	3.0												
<b>ARTB 10 SURVEY OF THE ARTS</b>																	
0338	MW	12:30pm-1:45pm	Tanous M	AC107	3.0												
<b>Art - Ceramics Technology</b>																	
<b>ARCE 1 INTRODUCTION TO CERAMICS</b>																	
0084	6h 0m / week		Eisenbach D	Online	3.0												
0181	TTh	1:00pm-3:50pm	Eisenbach D	AC107	3.0												
<b>ARCE 1A CERAMIC HANDBUILDING I</b>																	
0085	6h 0m / week		Eisenbach D	Online	3.0												
0182	TTh	1:00pm-3:50pm	Eisenbach D	AC107	3.0												
<b>ARCE 1B CERAMIC HANDBUILDING II</b>																	
0089	6h 0m / week		Eisenbach D	Online	3.0												
0184	TTh	1:00pm-3:50pm	Eisenbach D	AC107	3.0												
<b>ARCE 1C CERAMIC HANDBUILDING III</b>																	
0092	6h 0m / week		Eisenbach D	Online	3.0												
0188	TTh	1:00pm-3:50pm	Eisenbach D	AC107	3.0												
<b>ARCE 1D CERAMIC HANDBUILDING IV</b>																	
0093	6h 0m / week		Eisenbach D	Online	3.0												
0190	TTh	1:00pm-3:50pm	Eisenbach D	AC107	3.0												
<b>ARCE 2A CERAMIC WHEEL THROWING I</b>																	
0215	MW	9:00am-11:50am	Tanous M	AC104	3.0												
0288	TTh	6:00pm-8:50pm	Tanous M	AC104	3.0												
<b>ARCE 2B CERAMIC WHEEL THROWING II</b>																	
0217	MW	9:00am-11:50am	Tanous M	AC104	3.0												
0289	TTh	6:00pm-8:50pm	Tanous M	AC104	3.0												

# Welcome Back

## studio artists

Express yourself and connect to a creative community today!

- Ceramics
- Drawing
- Painting
- Print Making
- Sculpture
- Jewelry





[www.mpc.edu/creativearts](http://www.mpc.edu/creativearts)

SECTION	DAYS	TIME	INSTRUCTOR	ROOM	UNITS	SECTION	DAYS	TIME	INSTRUCTOR	ROOM	UNITS	SECTION	DAYS	TIME	INSTRUCTOR	ROOM	UNITS
<b>ARCE 2C</b>	<b>CERAMIC WHEEL THROWING III</b>																
0218	MW	9:00am-11:50am	Tanous M	AC104	3.0	<b>ARTD 40</b>	<b>INTRODUCTION TO JEWELRY AND METALSMITHING</b>										
0299	TTh	6:00pm-8:50pm	Tanous M	AC104	3.0	0620	MW	6:00pm-8:50pm	Staff	AD107	3.0	<b>ARTG 10</b>	<b>INTRODUCTION TO COMPUTERS FOR GRAPHIC ARTS</b>				
<b>ARCE 4A</b>	<b>KILN-FORMED GLASS I</b>																
0199	F	9:00am-11:50am	Eisenbach D	AC107	3.0	1016	MW	6:00pm-8:50pm	Staff	AD107	3.0	4044	MW	9:00am-11:50am	Staff	GA101	4.0
& F	1:00pm-3:50pm	Eisenbach D	AC107			<b>ARTD 40A</b>	<b>JEWELRY AND METAL ARTS I</b>										
<b>ARCE 4B</b>	<b>KILN-FORMED GLASS II</b>																
0204	F	9:00am-11:50am	Eisenbach D	AC107	3.0	0126	MW	6:00pm-8:50pm	Staff	AD107	3.0	<b>ARTG 11</b>	<b>INTRODUCTION TO PHOTOSHOP</b>				
& F	1:00pm-3:50pm	Eisenbach D	AC107			<b>ARTD 40B</b>	<b>JEWELRY AND METAL ARTS II</b>										
<b>ARCE 4C</b>	<b>KILN-FORMED GLASS III</b>																
0205	F	9:00am-11:50am	Eisenbach D	AC107	3.0	0128	MW	6:00pm-8:50pm	Staff	AD107	3.0	4045	TTh	6:00pm-8:50pm	Wolf J	GA101	4.0
& F	1:00pm-3:50pm	Eisenbach D	AC107			<b>ARTD 40C</b>	<b>JEWELRY AND METAL ARTS III</b>										
<b>ARCE 4D</b>	<b>KILN-FORMED GLASS IV</b>																
0206	F	9:00am-11:50am	Eisenbach D	AC107	3.0	0128	MW	6:00pm-8:50pm	Staff	AD107	3.0	<b>ARTG 15</b>	<b>GRAPHIC DESIGN: IMAGES AND TYPE</b>				
& F	1:00pm-3:50pm	Eisenbach D	AC107			<b>ARTD 40D</b>	<b>JEWELRY AND METAL ARTS IV</b>										
<b>ARCE 9</b>	<b>ALTERNATIVE FIRING TECHNIQUES</b>																
0098	F	9:00am-11:50am	Eisenbach D	AC107	3.0	0407	MW	6:00pm-8:50pm	Staff	AD107	3.0	1050	TTh	9:30am-12:20pm	Dagdigious J	GA101	4.0
& F	1:00pm-3:50pm	Eisenbach D	AC107			<b>ARTD 41A</b>	<b>SMALL METAL CASTING: JEWELRY I</b>										
						0316	MW	1:00pm-3:50pm	Staff	AD107	3.0	<b>ARTG 16</b>	<b>GRAPHIC ARTS PRODUCTION AND PRE-PRESS</b>				
						<b>ARTD 41B</b>	<b>SMALL METAL CASTING: JEWELRY II</b>										
						0318	MW	1:00pm-3:50pm	Staff	AD107	3.0	0250	TTh	1:00pm-3:50pm	Dagdigious J	GA101	4.0
						<b>ARTD 41C</b>	<b>SMALL METAL CASTING: JEWELRY III</b>										
						0319	MW	1:00pm-3:50pm	Staff	AD107	3.0	<b>ARTG 17</b>	<b>GRAPHIC ARTS PORTFOLIO</b>				
						<b>ARTD 41D</b>	<b>SMALL METAL CASTING: JEWELRY IV</b>										
						0321	MW	1:00pm-3:50pm	Staff	AD107	3.0	0201	F	10:00am-12:05pm	Dagdigious J	GA101	1.0
												(04/01-05/20)					

## Art - Graphics

## Art - Dimensional

<b>ARTD 1A</b>	<b>SCULPTURE I</b>																
0261	TTh	9:30am-12:20pm	Quinonez	AD101	3.0												
<b>ARTD 1B</b>	<b>SCULPTURE II</b>																
0268	TTh	9:30am-12:20pm	Quinonez	AD101	3.0												
<b>ARTD 1C</b>	<b>SCULPTURE III</b>																
0269	TTh	9:30am-12:20pm	Quinonez	AD101	3.0												
<b>ARTD 1D</b>	<b>SCULPTURE IV</b>																
0270	TTh	9:30am-12:20pm	Quinonez	AD101	3.0												
<b>ARTD 4A</b>	<b>WOOD SCULPTURE I</b>																
0301	Sat	9:30am-12:20pm	Kohnke J	AD101	3.0												
& Sat	1:00pm-3:50pm	Kohnke J	AD101														
<b>ARTD 4B</b>	<b>WOOD SCULPTURE II</b>																
0302	Sat	9:30am-12:20pm	Kohnke J	AD101	3.0												
& Sat	1:00pm-3:50pm	Kohnke J	AD101														
<b>ARTD 4C</b>	<b>WOOD SCULPTURE III</b>																
0310	Sat	9:30am-12:20pm	Kohnke J	AD101	3.0												
& Sat	1:00pm-3:50pm	Kohnke J	AD101														
<b>ARTD 7A</b>	<b>3D ARTS AND TECHNOLOGY I</b>																
0116	MW	1:00pm-3:50pm	Quinonez	AD101	3.0												
<b>ARTD 7B</b>	<b>3D ARTS AND TECHNOLOGY II</b>																
0117	MW	1:00pm-3:50pm	Quinonez	AD101	3.0												



SECTION	DAYS	TIME	INSTRUCTOR	ROOM	UNITS	SECTION	DAYS	TIME	INSTRUCTOR	ROOM	UNITS	SECTION	DAYS	TIME	INSTRUCTOR	ROOM	UNITS
---------	------	------	------------	------	-------	---------	------	------	------------	------	-------	---------	------	------	------------	------	-------

### Art - History

<b>ARTH 1</b>	<b>ART APPRECIATION</b>				
0577	3h 0m / week	Madsen	Online	3.0	
0671	TTh 11:00am-12:15pm	Madsen	IC104	3.0	
<b>ARTH 4</b>	<b>WESTERN ART II</b>				
0033	TTh 11:00am-12:15pm	Madsen	Online	3.0	
<b>ARTH 12</b>	<b>GREEK AND ROMAN ART AND ARCHITECTURE</b>				
0177	MW 1:00pm-2:15pm	Madsen	Online	3.0	

### Art - Photography

<b>ARTP 10</b>	<b>INTRODUCTION TO PHOTOGRAPHY</b>				
0312	3h 0m / week	Bhattacharji	Online	3.0	
<b>ARTP 11A</b>	<b>PHOTOGRAPHY I: BLACK AND WHITE</b>				
0583	4h 35m / week	Lara C	PGHS	3.0	
1021	TTh 9:00am-11:35am	Mettler	IC105	3.0	
1022	TTh 3:30pm-6:00pm	Lara C	IC105	3.0	
<b>ARTP 12A</b>	<b>DIGITAL PHOTOGRAPHY I</b>				
0386	6h 0m / week	Bhattacharji	Online	3.0	
<b>ARTP 14</b>	<b>HISTORY OF PHOTOGRAPHY</b>				
1065	W 9:00am-11:50am	Mettler	Online	3.0	

### Art - Studio

<b>ARTS 10A</b>	<b>DRAWING AND COMPOSITION I</b>				
0251	MW 9:30am-12:00pm	Gomez G	AC101	3.0	
1029	TTh 1:00pm-3:35pm	Quinonez	AC101	3.0	
<b>ARTS 10B</b>	<b>INTERMEDIATE DRAWING</b>				
0252	MW 9:30am-12:00pm	Gomez G	AC101	3.0	
<b>ARTS 12A</b>	<b>FIGURE DRAWING I</b>				
4038	MW 9:00am-11:50am	Thorson C	AS107	3.0	
<b>ARTS 12B</b>	<b>FIGURE DRAWING II</b>				
4039	MW 9:00am-11:50am	Thorson C	AS107	3.0	
<b>ARTS 12C</b>	<b>FIGURE DRAWING III</b>				
0153	MW 9:00am-11:50am	Thorson C	AS107	3.0	
<b>ARTS 12D</b>	<b>FIGURE DRAWING IV</b>				
0579	MW 9:00am-11:50am	Thorson C	AS107	3.0	

<b>ARTS 40A</b>	<b>PAINTING I</b>				
1030	F 9:00am-11:50am	Niven M	AS107	3.0	
	& F 12:30pm-3:00pm	Niven M	AS107		
<b>ARTS 40B</b>	<b>PAINTING II</b>				
0584	F 9:00am-11:50am	Niven M	AS107	3.0	
	& F 12:30pm-3:20pm	Niven M	AS107		
<b>ARTS 40C</b>	<b>PAINTING III</b>				
0161	F 9:00am-11:50am	Niven M	AS107	3.0	
	& F 12:30pm-3:20pm	Niven M	AS107		
<b>ARTS 40D</b>	<b>PAINTING IV</b>				
0918	F 9:00am-11:50am	Niven M	AS107	3.0	
	& F 12:30pm-3:20pm	Niven M	AS107		
<b>ARTS 60</b>	<b>INTRODUCTION TO PRINTMAKING</b>				
1031	MW 12:30pm-3:20pm	Klein E	AS101	3.0	
<b>ARTS 63A</b>	<b>INTAGLIO PRINTMAKING I</b>				
0258	MW 12:30pm-3:20pm	Klein E	AS101	3.0	
<b>ARTS 63B</b>	<b>INTAGLIO PRINTMAKING II</b>				
0259	MW 12:30pm-3:20pm	Klein E	AS101	3.0	
<b>ARTS 63C</b>	<b>INTAGLIO PRINTMAKING III</b>				
0260	MW 12:30pm-3:20pm	Klein E	AS101	3.0	

### Art - Video/Cinema

<b>ARTV 1</b>	<b>INTRODUCTION TO FILM/VIDEO</b>				
1005	3h 0m / week	Robbins	Online	3.0	

### Astronomy

<b>ASTR 10</b>	<b>INTRODUCTION TO ASTRONOMY</b>				
0342	TTh 11:00am-12:15pm	Hickok E	LF103	3.0	
4081	TTh 11:00am-12:15pm	Hickok E	LF103	3.0	
4082	TTh 11:00am-12:15pm	Hickok E	LF103	3.0	
<b>ASTR 10L</b>	<b>INTRODUCTION TO ASTRONOMY LABORATORY</b>				
0344	W 3:00pm-4:50pm	Jewell L	PS103	1.0	
	& 1h 0m / week	Jewell L	PS103		
4087	W 10:00am-11:50am	Hickok E	PS103	1.0	
	& 1h 0m / week	Hickok E	PS103		
4088	W 1:00pm-2:50pm	Hickok E	PS103	1.0	
	& 1h 0m / week	Hickok E	PS103		

SECTION	DAYS	TIME	INSTRUCTOR	ROOM	UNITS	SECTION	DAYS	TIME	INSTRUCTOR	ROOM	UNITS	SECTION	DAYS	TIME	INSTRUCTOR	ROOM	UNITS
---------	------	------	------------	------	-------	---------	------	------	------------	------	-------	---------	------	------	------------	------	-------

## Athletics

### ATHL 20.2 SKILL DEVELOPMENT FOR BASKETBALL - MEN

4790 8h 25m / week Spiering PE201 1.0  
(03/28-05/24)

### ATHL 20.3 SKILL DEVELOPMENT FOR BASKETBALL - WOMEN

4791 8h 25m / week O'Hare PE201 1.0  
(03/28-05/24)

### ATHL 20.4 SKILL DEVELOPMENT FOR FOOTBALL

4792 3h 0m / week Palmer R FFIELD 1.0

4793 3h 0m / week Washington R FFIELD 1.0

### ATHL 20.8 SKILL DEVELOPMENT FOR TENNIS

4794 11h 20m / week Tran T CTS 0.5  
(01/03-01/20)

### ATHL 21 COMPETITIVE GOLF

0000 MTWThF 1:00pm-3:20pm Russo J BHB 0.5  
(01/03-01/20)

### ATHL 29 VARSITY ATHLETIC CONDITIONING

0717 11h 20m / week Carroll M TRACK 0.5  
(01/03-01/20)

1040 11h 20m / week Moore K PE201 0.5  
(01/03-01/20)

4795 11h 20m / week O'Hare PE201 0.5  
(01/03-01/20)

4796 11h 20m / week Phillips D BFIELD 0.5  
(01/03-01/20)

4798 11h 20m / week Berg W SFIELD 0.5  
(01/03-01/20)

4799 11h 20m / week Spiering PE201 0.5  
(01/03-01/20)

4800 2h 0m / week Palmer R FFIELD 0.5

4801 2h 0m / week Washington R FFIELD 0.5

### ATHL 30.1 INTERCOLLEGIATE BASKETBALL: WOMEN

4804 10h 35m / week O'Hare PE201 1.5  
(01/24-03/18)

### ATHL 30.2 INTERCOLLEGIATE SOFTBALL: WOMEN

4805 10h 0m / week Berg W SFIELD 3.0

### ATHL 30.4 INTERCOLLEGIATE TENNIS: WOMEN

4806 10h 0m / week Tran T CTS 3.0

### ATHL 30.7 INTERCOLLEGIATE BEACH VOLLEYBALL: WOMEN

0157 10h 0m / week Moore K TBA 3.0

### ATHL 31.2 INTERCOLLEGIATE BASKETBALL: MEN

4807 10h 35m / week Spiering PE201 1.5  
(01/24-03/18)

# LEARN BY DOING!

The MPC Automotive Technology Department is currently offering in-person labs for students.

- Prepare for a high-tech career in the automotive world.
- Learn from highly skilled and highly skilled professionals
- Earn industry certifications through our valued partnerships with Subaru & Mercedes Benz



[www.mpc.edu/auto](http://www.mpc.edu/auto)

### ATHL 31.3 INTERCOLLEGIATE BASEBALL: MEN

4808 10h 0m / week Phillips D BFIELD 3.0

### ATHL 31.4 INTERCOLLEGIATE GOLF: MEN

4809 10h 0m / week Russo J BHB 3.0

### ATHL 32.1 INTERCOLLEGIATE TRACK AND FIELD: WOMEN AND MEN

4810 10h 0m / week Carroll M TRACK 3.0

### ATHL 32.4 INTERCOLLEGIATE CROSS COUNTRY: WOMEN AND MEN

1049 10h 0m / week Carroll M TRACK 3.0

### ATHL 90 INDEPENDENT STUDY

1154 8h 25m / week O'Hare PE201 1.0  
(03/28-05/24)

1202 2h 0m / week Moore K TBD 0.5

## Automotive Technology

### AUTO 100 INTRODUCTION TO AUTOMOTIVE TECHNOLOGY

0855 MW 6:30pm-9:20pm Evans M AT103 4.0

### AUTO 105 AUTOMOTIVE ELECTRICAL CIRCUITS

0871 MTWThF 8:00am-1:35pm Lawrence J AT103 2.5  
(01/03-01/20)

### AUTO 106 AUTOMOTIVE BRAKE SYSTEMS AND SAFETY INSPECTION

0483 MTWTh 1:00pm-4:05pm Lawrence J AT103 4.0  
(01/24-03/17)

### AUTO 107 AUTOMATIC TRANSMISSIONS AND TRANSAXLE

0372 MTWTh 8:00am-11:50am Lawrence J AT103 4.0  
(03/28-05/17)

### AUTO 108 MANUAL TRANSMISSIONS AND DRIVETRAINS

0094 MTWTh 8:00am-11:05am Hartzel B AT103 4.0  
& MTWTh 8:00am-11:05am Lawrence J AT103  
(01/24-03/17)

### AUTO 111 AUTOMOTIVE STEERING AND SUSPENSION

0886 MTWTh 2:00pm-5:05pm Lawrence J AT103 4.0  
(03/28-05/19)

### AUTO 170 SMOG CHECK INSPECTION PROCEDURES

0890 TTh 6:00pm-7:50pm Omstead C AT103 2.5

SECTION DAYS TIME INSTRUCTOR ROOM UNITS SECTION DAYS TIME INSTRUCTOR ROOM UNITS SECTION DAYS TIME INSTRUCTOR ROOM UNITS

**Biology**

**BIOL 10 PRINCIPLES OF BIOLOGY**

0097	MWF & Th	1:00pm-1:50pm 2:00pm-4:50pm	Gilbert P S Gilbert P S	LS102 LS101	4.0
1190	MWF & F	1:00pm-1:50pm 2:00pm-4:50pm	Gilbert P S Gilbert P S	LS102 LS101	4.0
4095	MW & Th	9:30am-10:45am 9:30am-12:20pm	Raskoff K Raskoff K	LS102 LS101	4.0
4096	MW & F	9:30am-10:45am 9:00am-11:50am	Raskoff K Raskoff K	LS102 LS101	4.0
5029	TTh	6:00pm-8:50pm	Kochevar/Raskoff	Online	4.0

**BIOL 13 MARINE BIOLOGY**

0057	MW & W	11:00am-12:15pm 2:00pm-4:50pm	Raskoff K Raskoff K	LS102 LS104	4.0
------	--------	----------------------------------	------------------------	----------------	-----

**BIOL 21 CONCEPTS IN BIOLOGY I: CELLS, GENETICS, AND ORGANISMS**

1158	MWF & T	9:45am-10:50am 9:30am-12:20pm	Gilbert P S Gilbert P S	LF101 LS101	5.0
4099	MWF & T	9:45am-10:50am 2:00pm-4:50pm	Gilbert P S Gilbert P S	LF101 LS101	5.0
4100	MWF & W	9:45am-10:50am 2:00pm-4:50pm	Gilbert P S Gilbert P S	LF101 LS101	5.0

**BIOL 25 APPLIED MICROBIOLOGY LECTURE**

0893	MWF	8:30am-9:20am	Craig H	LF101	3.0
------	-----	---------------	---------	-------	-----

**BIOL 26 APPLIED MICROBIOLOGY LABORATORY**

0010	MWF	9:30am-11:35am	Craig H	LS201	1.0
(03/28-05/16)					
0896	MWF	9:30am-11:35am	Craig H	LS201	1.0
(01/24-03/18)					
1192	MWF	1:00pm-3:05pm	Craig H	LS201	1.0
(03/28-05/16)					

**BIOL 31 ENVIRONMENTAL SCIENCE**

0469	TF	8:00am-9:30am	Kochevar R	MRNHS	3.0
(01/25-05/13)					
0496	MW	8:00am-9:15am	Raskoff K	LS102	3.0
4105	T & T	6:00pm-8:50pm 6:00pm-8:50pm	Matsumoto Preston C	LS102 LS102	3.0
5030	3h 0m / week		Raskoff K	Online	3.0

**BIOL 32 ENVIRONMENTAL SCIENCE LABORATORY**

0073	3h 0m / week		Kochevar R	Online	1.0
4106	6h 20m / week		Staff	Online	1.0
(03/28-05/20)					

**Business**

**BUSI 1A FINANCIAL ACCOUNTING**

0055	4h 0m / week		Mikkelsen	Online	4.0
4108	TTh	11:00am-12:50pm	Mikkelsen	BMC204	4.0
4109	4h 0m / week		Mikkelsen	Online	4.0
5032	4h 0m / week		Sobotka	Online	4.0

**BUSI 1B MANAGERIAL ACCOUNTING**

0598	4h 0m / week		Mikkelsen	Online	4.0
4110	MW	11:00am-12:50pm	Mikkelsen	BMC204	4.0
5033	W	6:00pm-9:50pm	Roberts C	Online	4.0

**BUSI 18 BUSINESS LAW**

4111	TTh	1:00pm-2:15pm	Castillo L	BMC204	3.0
4112	3h 0m / week		Castillo L	Online	3.0
5034	3h 0m / week		Castillo L	Online	3.0

**BUSI 20 INTRODUCTION TO BUSINESS**

0558	MTh	8:00am-9:30am	Feldman M	MHS	3.0
(01/20-05/19)					
0563	MTh	9:50am-11:20am	Feldman M	MHS	3.0
(01/20-05/19)					
0564	MTh	11:25am-12:55pm	Feldman M	MHS	3.0
(01/20-05/19)					
0567	TF	11:25am-12:55pm	Feldman M	MHS	3.0
(01/25-05/13)					
0706	3h 0m / week		Gravelle K	Online	3.0
0892	6h 20m / week		Gravelle K	Online	3.0
(03/28-05/20)					
4113	MW	2:00pm-3:15pm	Barrie B	BMC107	3.0
5035	Th	6:00pm-8:50pm	Peelman L	Online	3.0

**START OR GROW your business TODAY!**

- Busi 18: Business Law**
- Busi 20: Introduction to Business**
- Busi 44: Business Ownership/MGMT**
- Busi 46: Entrepreneurial Mindset**
- Busi 50: Introduction to Marketing**
- Busi 54: Introduction to E-Marketing**

**MPC Can Turn Your Dreams Into a Reality!**

# Launch Your Career

Business Skills courses are designed to develop foundational skills that prepare you for success in the work force. Improve keyboarding skills and complete Microsoft Office Specialist Certifications in PowerPoint, Excel, and Word.



- MS Application BUSC classes lead to certification
- Complete your exam at the end of the course

Add Microsoft Office knowledge to your skill set with Business Skills courses at MPC!



<b>BUSI 22</b>	<b>EFFECTIVE LEADERSHIP IN BUSINESS</b>	0637	3h 0m / week	Castillo L	Online	3.0
<b>BUSI 24</b>	<b>BUSINESS ISSUES AND ETHICS</b>	4115	3h 20m / week (02/07-05/27)	Gravelle K	Online	3.0
<b>BUSI 38</b>	<b>MANAGING DIVERSITY AND INCLUSION</b>	4117	TTh 9:30am-10:45am	Castillo L	Online	3.0
<b>BUSI 42</b>	<b>HUMAN RESOURCES MANAGEMENT</b>	4119	6h 20m / week (03/28-05/20)	Castillo L	Online	3.0
<b>BUSI 44</b>	<b>INTRODUCTION TO BUSINESS OWNERSHIP/MANAGEMENT</b>	4120	3h 0m / week	Barrie B	Online	3.0

<b>BUSI 46</b>	<b>ENTREPRENEURIAL MINDSET</b>	0569	MTh 1:35pm-3:05pm (01/20-05/19)	Feldman M	MHS	3.0
		0572	TF 1:35pm-3:05pm (01/25-05/13)	Feldman M	MHS	3.0
		1140	6h 20m / week (03/28-05/20)	Barrie B	Online	3.0
<b>BUSI 50</b>	<b>INTRODUCTION TO MARKETING</b>	1123	6h 20m / week (03/28-05/20)	Barrie B	Online	3.0
<b>BUSI 54</b>	<b>INTRODUCTION TO E-MARKETING</b>	1124	6h 20m / week (01/24-03/18)	Hurtarte J	Online	3.0
<b>BUSI 60</b>	<b>FINANCIAL PLANNING AND MONEY MANAGEMENT</b>	5036	3h 0m / week	Barrie B	Online	3.0

<b>BUSI 64</b>	<b>CUSTOMER SERVICE</b>	0966	Th 4:30pm-5:20pm & 5h 20m / week (01/24-03/18)	Jansen M Jansen M	Online	3.0
<b>BUSI 70</b>	<b>BUSINESS COMMUNICATION</b>	4122	3h 0m / week	Kimm M	Online	3.0
<b>BUSI 110</b>	<b>BUSINESS MATHEMATICS</b>	0530	3h 0m / week	Sobotka	Online	3.0
<b>BUSI 120A</b>	<b>BASIC ACCOUNTING</b>	5038	T 6:00pm-9:50pm	Roberts C	Online	4.0
<b>BUSI 120B</b>	<b>QUICKBOOKS ONLINE ACCOUNTING SOFTWARE</b>	0484	3h 0m / week	Sobotka	Online	3.0
<b>BUSI 464</b>	<b>CUSTOMER SERVICE</b>	0143	Th 4:30pm-5:20pm & 5h 20m / week (01/24-03/18)	Jansen M Jansen M	Online	0.0

## Business Skills Center

<b>BUSC 109</b>	<b>KEYBOARDING FOR COMPUTERS</b>	0510	8h 25m / week (01/31-03/11)	Walker J	Online	1.0
		0511	8h 25m / week (04/04-05/13)	Walker J	Online	1.0
<b>BUSC 140</b>	<b>COMPUTER APPLICATIONS - MICROSOFT WORD</b>	4572	6h 20m / week (03/28-05/20)	Ramos J	Online	1.0
<b>BUSC 150</b>	<b>COMPUTER APPLICATIONS - MICROSOFT EXCEL</b>	0518	6h 20m / week (03/28-05/20)	Walker J	Online	1.0
		0519	6h 20m / week (01/24-03/18)	Walker J	Online	1.0
<b>BUSC 160</b>	<b>COMPUTER APPLICATIONS - MICROSOFT POWERPOINT</b>	0746	6h 20m / week (03/28-05/20)	Ramos J	Online	1.0
<b>BUSC 409</b>	<b>KEYBOARDING FOR COMPUTERS</b>	0150	8h 25m / week (01/31-03/11)	Walker J	Online	0.0
		0154	8h 25m / week (04/04-05/13)	Walker J	Online	0.0
<b>BUSC 440</b>	<b>COMPUTER APPLICATIONS: MICROSOFT WORD</b>	0159	6h 20m / week (03/28-05/20)	Ramos J	Online	0.0

SECTION	DAYS	TIME	INSTRUCTOR	ROOM	UNITS	SECTION	DAYS	TIME	INSTRUCTOR	ROOM	UNITS	SECTION	DAYS	TIME	INSTRUCTOR	ROOM	UNITS
<b>BUSC 450 COMPUTER APPLICATIONS: MICROSOFT EXCEL</b>																	
0162	6h	20m / week	Walker J	Online	0.0												
		(03/28-05/20)															
0165	6h	20m / week	Walker J	Online	0.0												
		(01/24-03/18)															
<b>BUSC 460 COMPUTER APPLICATIONS: MICROSOFT POWERPOINT</b>																	
0169	6h	20m / week	Ramos J	Online	0.0												
		(03/28-05/20)															

## Chemistry

### CHEM 1A GENERAL CHEMISTRY I

4125	9h	0m / week	Turner R	Online	5.0
	&	9h	0m / week	Turner R	Online
4126	3h	0m / week	Turner R	Online	5.0
	& M	2:00pm-4:50pm	Turner R	Online	
	& W	2:00pm-4:50pm	Turner R	Online	
4127	3h	0m / week	Turner R	Online	5.0
	& TTh	10:00am-12:50pm	Turner R	PS206	
4128	3h	0m / week	Turner R	Online	5.0
	& TTh	2:00pm-4:50pm	Garcia Garcia	PS206	

### CHEM 1B GENERAL CHEMISTRY II

4130	3h	0m / week	Rivera F	Online	5.0
	& MW	10:00am-12:50pm	Rivera F	Online	
4131	3h	0m / week	Rivera F	Online	5.0
	& MW	2:00pm-4:50pm	Rivera F	Online	

### CHEM 2 FUNDAMENTAL CHEMISTRY

0610	4h	15m / week	Garcia Garci	Online	4.0
	& WF	9:00am-11:05am	Garcia Garci	PS202	
		(02/21-05/20)			
4132	3h	0m / week	Rivera F	Online	4.0
	& T	10:00am-12:50pm	Rivera F	Online	
4133	3h	0m / week	Rivera F	Online	4.0
	& Th	2:00pm-4:50pm	Rivera F	Online	

### CHEM 10 EVERYDAY CHEMISTRY

0379	9h	40m / week	Bishop M	Online	4.0
	& Sat	9:00am-11:50am	Bishop M	Online	
	&	9h	40m / week	Bishop M	Online
		(03/26-05/21)			

### CHEM 12B ORGANIC CHEMISTRY II

0586	MWF	9:00am-9:50am	Ritsema T	PS207	5.0
	& MW	10:00am-12:50pm	Ritsema T	PS203	
4134	MWF	9:00am-9:50am	Ritsema T	PS207	5.0
	& MW	2:00pm-4:50pm	Ritsema T	PS203	

### CHEM 30A INTRODUCTORY CHEMISTRY FOR HEALTH SCIENCES

0180	3h	0m / week	Baum J	Online	4.0
	& M	9:00am-11:50am	Baum J	PS202	
0849	3h	0m / week	Baum J	Online	4.0
	& M	2:00pm-4:50pm	Baum J	PS202	
4137	3h	0m / week	Baum J	Online	4.0
	& T	9:00am-11:50am	Baum J	PS202	
4139	6h	0m / week	Guha N	Online	4.0
	& F	10:00am-12:50pm	Guha N	Online	

### CHEM 30B ORGANIC AND BIOLOGICAL CHEMISTRY FOR HEALTH SCIENCES

0004	3h	0m / week	Baum J	Online	4.0
	& Th	2:00pm-4:50pm	Baum J	PS203	

## Communication Studies

### COMM 5 MASS MEDIA METHODS

0452	3h	0m / week	Osburg	Online	3.0
------	----	-----------	--------	--------	-----

### COMM 35 INTRODUCTION TO NONVERBAL COMMUNICATION

0445	3h	0m / week	Abend	Online	3.0
------	----	-----------	-------	--------	-----

## Computer Science and Information Systems

### CSIS 1 COMPUTER INFORMATION SYSTEMS

0381	TTh	1:00pm-3:15pm	Olsen J	BMC206	3.0
0520	5h	0m / week	Singh D	Online	3.0
0806	5h	0m / week	Seagal D	Online	3.0
0887	10h	35m / week	Martini P	Online	3.0
		(03/28-05/20)			

### CSIS 9 PROGRAMMING FUNDAMENTALS: PYTHON

0136	5h	0m / week	Seagal D	Online	3.0
0585	M	8:30am-9:20am	Richmond S	PGHS	3.0
	& TTh	8:30am-10:10am	Richmond S	PGHS	
0588	M	1:05pm-1:55pm	Richmond S	PGHS	3.0
	& TTh	1:05pm-2:45pm	Richmond S	PGHS	
0888	10h	35m / week	Seagal D	Online	3.0
		(03/28-05/20)			

### CSIS 10A PROGRAMMING METHODS I: JAVA

0580	4h	15m / week	Chen M	SHS	4.0
	&	4h	15m / week	Chen M	SHS
0753	5h	0m / week	Rebold T	Online	4.0
0941	MW	1:00pm-2:30pm	Seagal D	BMC206	4.0
	&	1h	30m / week	Seagal D	Online

### CSIS 10B PROGRAMMING METHODS II: JAVA

5057	MW	3:00pm-5:50pm	Rebold T	BMC206	4.0
------	----	---------------	----------	--------	-----

### CSIS 11 COMPUTER ARCHITECTURE AND ORGANIZATION

0707	MW	6:00pm-8:15pm	Seagal D	BMC206	3.0
------	----	---------------	----------	--------	-----



### CSIS 12 DISCRETE STRUCTURES

1015	W	9:00am-9:50am	Spence L	BMC104	3.0
	&	3h	0m / week	Spence L	Online

### CSIS 50 MS OFFICE APPLICATIONS

0306	2h	0m / week	Stewart M	Online	2.0
------	----	-----------	-----------	--------	-----

*Sections below offered at the MPC Education Center in Marina:*

0349	M	3:30pm-4:20pm	Stewart M	MA103	2.0
	&	1h	0m / week	Stewart M	Online

### CSIS 50L MS OFFICE APPLICATIONS LAB

0307	3h	0m / week	Stewart M	Online	1.0
------	----	-----------	-----------	--------	-----

*Sections below offered at the MPC Education Center in Marina:*

0350	M	4:30pm-5:45pm	Stewart M	MA103	1.0
	&	1h	25m / week	Stewart M	Online

### CSIS 72A MANAGING AND MAINTAINING WINDOWS SERVER

0278	5h	0m / week	Olsen J	Online	3.0
------	----	-----------	---------	--------	-----

### CSIS 76A CISCO CERTIFIED NETWORK ASSOCIATE (CCNA) 1

0639	6h	0m / week	Singh D	Online	3.0
------	----	-----------	---------	--------	-----

### CSIS 76C CISCO CERTIFIED NETWORK ASSOCIATE (CCNA) 3

1122	6h	0m / week	Singh D	Online	3.0
------	----	-----------	---------	--------	-----

### CSIS 80 INTRODUCTION TO UNIX AND LINUX

4154	4h	0m / week	Olsen J	Online	3.0
------	----	-----------	---------	--------	-----

### CSIS 83A MICROSOFT CLIENT OPERATING SYSTEM

0303	5h	0m / week	Olsen J	Online	3.0
------	----	-----------	---------	--------	-----

### CSIS 86 NETWORK SECURITY FUNDAMENTALS/SECURITY+ PREP

0293	6h	0m / week	Singh D	Online	3.0
------	----	-----------	---------	--------	-----

### CSIS 88 SECURITY PRACTICES: PENETRATION TESTING AND DISCOVERY

0291	MW	6:00pm-8:15pm	Olsen J	BMC207	3.0
------	----	---------------	---------	--------	-----

SECTION	DAYS	TIME	INSTRUCTOR	ROOM	UNITS	SECTION	DAYS	TIME	INSTRUCTOR	ROOM	UNITS	SECTION	DAYS	TIME	INSTRUCTOR	ROOM	UNITS
---------	------	------	------------	------	-------	---------	------	------	------------	------	-------	---------	------	------	------------	------	-------

## Cooperative Work Experience



### COOPERATIVE WORK EXPERIENCE



### WORK • LEARN • EARN

*Did you know you can earn course credit while working at your job, internship, or volunteer work?*

### ASK US:

- How to find an internship
- How to use your current job for college credit
- How to get started

COOP can boost your grade point average and help you maintain full-time student status and you can pick up a COOP section at any time during the semester!

Contact:  
Maj-Britt Kimm or Lindsay Peelman  
mpc\_coop@mpc.edu  
or visit: [www.mpc.edu/coop](http://www.mpc.edu/coop)

## Dance

### DANC 5 DANCE APPRECIATION

0358 3h 0m / week Southard S Online 3.0

### DANC 10A MODERN DANCE I

4979 MW 7:00pm-8:50pm Ross D DA102 1.0

### DANC 10B MODERN DANCE II

0156 MW 7:00pm-8:50pm Ross D DA102 1.0

### DANC 10C MODERN DANCE III

0630 MW 7:00pm-8:50pm Ross D DA102 1.0

### DANC 10D MODERN DANCE IV

0631 MW 7:00pm-8:50pm Ross D DA102 1.0

### DANC 11A JAZZ DANCE I

0294 TTh 12:30pm-2:20pm Southard S DA102 1.0

### DANC 11B JAZZ DANCE II

0296 TTh 12:30pm-2:20pm Southard S DA102 1.0

### DANC 11C JAZZ DANCE III

0309 TTh 12:30pm-2:20pm Southard S DA102 1.0

### DANC 11D JAZZ DANCE IV

0324 TTh 12:30pm-2:20pm Southard S DA102 1.0

### DANC 12A BALLET I

4983 MW 5:00pm-6:50pm Keindl P DA102 1.0

### DANC 12B BALLET II

4984 MW 5:00pm-6:50pm Keindl P DA102 1.0

### DANC 12C BALLET III

0168 MW 5:00pm-6:50pm Keindl P DA102 1.0

### DANC 12D BALLET IV

0633 MW 5:00pm-6:50pm Keindl P DA102 1.0

### DANC 15A ETHNIC DANCE FORMS I

0361 MW 6:30pm-8:20pm Sinclair DA103 1.0

### DANC 15B ETHNIC DANCE FORMS II

0362 MW 6:30pm-8:20pm Sinclair DA103 1.0

### DANC 15C ETHNIC DANCE FORMS III

0363 MW 6:30pm-8:20pm Sinclair DA103 1.0

### DANC 15D ETHNIC DANCE FORMS IV

0365 MW 6:30pm-8:20pm Sinclair DA103 1.0

### DANC 20A DANCE PRODUCTION - MODERN DANCE

0366 4h 0m / week Ross D DA101 1.0

### DANC 20B DANCE PRODUCTION - JAZZ

0373 4h 0m / week Ross D DA101 1.0

### DANC 20C DANCE PRODUCTION - ETHNIC DANCE

0388 4h 0m / week Ross D DA101 1.0

### DANC 20D DANCE PRODUCTION-BALLET

0399 4h 0m / week Ross D DA101 1.0

### DANC 21 INTRODUCTION TO REPERTORY - JAZZ

0400 4h 0m / week Ross D DA101 1.0

## Dental Assisting

### DNTL 107 CORONAL POLISH

0899 MTWThF 12:30pm-4:50pm Hopkins Carp LS202 0.5  
& MTWThF 12:30pm-4:50pm Miller L LS202 (01/03-01/10)

4155 MTWThF 7:45am-12:05pm Hopkins Carp LS202 0.5  
& MTWThF 7:45am-12:05pm Topper M LS202 (01/03-01/10)

### DNTL 108 PIT AND FISSURE SEALANTS

0907 MTWThF 12:30pm-4:50pm Hopkins Carp LS202 0.5  
& MTWThF 12:30pm-4:50pm Miller L LS202 (01/11-01/19)

4156 MTWThF 7:45am-12:05pm Hopkins Carp LS202 0.5  
& MTWThF 7:45am-12:05pm Topper M LS202 (01/11-01/19)

### DNTL 111 DENTAL PHARMACOLOGY AND ORAL PATHOLOGY

4157 MW 8:15am-10:20am Grasmuck K Online 2.0 (01/24-03/16)

### DNTL 112 OFFICE MANAGEMENT

4158 MW 10:30am-1:05pm Grasmuck K Online 2.5 (01/24-03/16)

### DNTL 115 DENTAL SPECIALTIES

4159 MW 1:45pm-3:35pm Grasmuck K Online 2.5  
& TTh 8:45am-11:00am Hopkins Carp LS202  
& TTh 8:45am-11:00am Topper M LS202 (01/24-03/17)

4160 MW 1:45pm-3:35pm Grasmuck K Online 2.5  
& TTh 11:45am-2:00pm Hopkins Carp LS202  
& TTh 11:45am-2:00pm Miller L LS202 (01/24-03/17)

### DNTL 116 SUPERVISED CLINICAL EXPERIENCE

4161 MTWTh 8:00am-11:50am Grasmuck K CLINIC 5.0  
& MTWTh 1:00pm-4:15pm Grasmuck K CLINIC  
& F 9:00am-9:50am Grasmuck K Online (03/28-05/20)



SECTION	DAYS	TIME	INSTRUCTOR	ROOM	UNITS	SECTION	DAYS	TIME	INSTRUCTOR	ROOM	UNITS	SECTION	DAYS	TIME	INSTRUCTOR	ROOM	UNITS
---------	------	------	------------	------	-------	---------	------	------	------------	------	-------	---------	------	------	------------	------	-------

# Ready to Dance



MPC offers classes for all levels in **Ballet, Ballroom, Belly Dance, Jazz, and Modern Dance** plus opportunities to **Choreograph and Perform** in our annual Spring Dance Concert!

*photo credit: chungyi mciver*

## Early Childhood Education

### ECED 1 CHILD GROWTH AND DEVELOPMENT

0322	3h 0m / week	Oswald A	Online	3.0
0792	2h 45m / week	Robinson N	Online	3.0
4141	1h 25m / week & Th 9:30am-10:45am	Oswald A Oswald A	Online CDC201	3.0
4142	6h 20m / week (03/28-05/20)	Oswald A	Online	3.0

### ECED 2 OBSERVATION AND ASSESSMENT

5048	3h 0m / week	Nyznyk	Online	3.0
------	--------------	--------	--------	-----

### ECED 51 PRINCIPLES AND PRACTICES OF TEACHING YOUNG CHILDREN

4143	3h 0m / week	Millovich	Online	3.0
------	--------------	-----------	--------	-----

### ECED 52 PRACTICUM: FIELD TEACHING EXPERIENCE

0195	W 6:30pm-9:20pm & 6h 0m / week	Procive Procive	CDC201 TBA	4.0
------	-----------------------------------	--------------------	---------------	-----

### ECED 55 CHILD, FAMILY, AND COMMUNITY

0196	3h 0m / week	Galer K	Online	3.0
0662	6h 20m / week	Thompson J	Online	3.0

### ECED 56 TEACHING IN A DIVERSE SOCIETY

0529	3h 0m / week	Oswald A	Online	3.0
------	--------------	----------	--------	-----

### ECED 71A ADMIN I: PROGRAMS IN EARLY CHILDHOOD ED

0062	6h 20m / week (01/24-03/18)	Thompson J	Online	3.0
------	--------------------------------	------------	--------	-----

### ECED 71B ADMIN II: PERSONNEL AND LEADERSHIP IN EARLY CHILDHOOD ED

0065	6h 20m / week (03/28-05/20)	Thompson J	Online	3.0
------	--------------------------------	------------	--------	-----

### ECED 80 INTRODUCTION TO CURRICULUM

0403	Th 6:30pm-7:45pm & 1h 25m / week	Oswald A Oswald A	CDC201 Online	3.0
------	-------------------------------------	----------------------	------------------	-----

### ECED 81 CREATIVITY IN ART AND SMALL MOTOR DEVELOPMENT

0059	MW 6:30pm-9:40pm (01/24-03/16)	Nyznyk	SS102	3.0
------	-----------------------------------	--------	-------	-----

### ECED 83 LARGE MOTOR DEVELOPMENT: MUSIC & MOVEMENT FOR YOUNG CHILDREN

0061	MW 6:30pm-9:35pm (03/28-05/20)	Galer K	SS102	3.0
------	-----------------------------------	---------	-------	-----

## Economics

### ECON 1 THE AMERICAN ECONOMIC SYSTEM

0531	MW 12:30pm-1:45pm	Morgan D	SS104	3.0
------	-------------------	----------	-------	-----

### ECON 2 PRINCIPLES OF ECONOMICS: MACRO

0735	3h 0m / week	Albert	Online	3.0
4164	MW 9:30am-10:45am	Morgan D	SS104	3.0
4165	3h 0m / week	Saha S	Online	3.0

### ECON 4 PRINCIPLES OF ECONOMICS: MICRO

4167	3h 0m / week	Albert	Online	3.0
4169	3h 0m / week	Saha S	Online	3.0

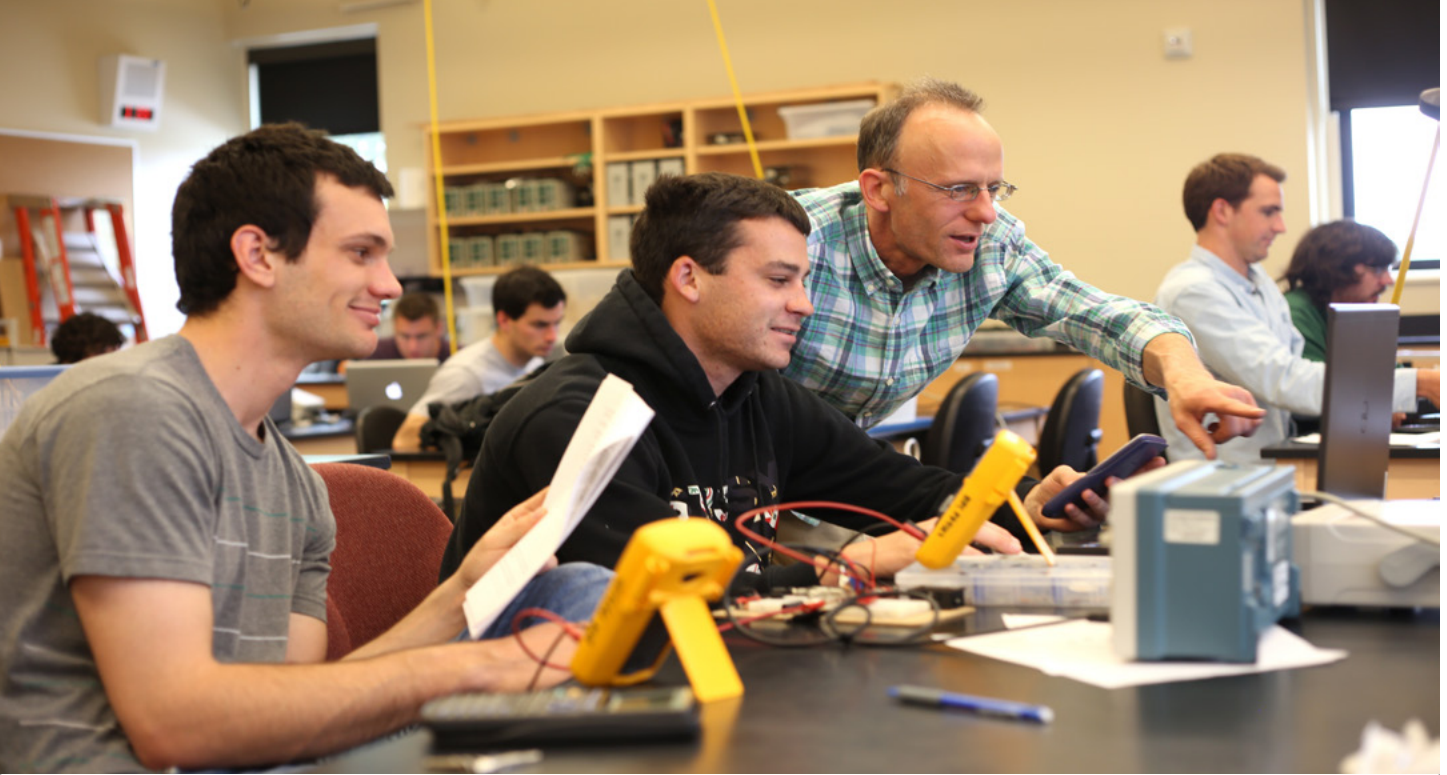
## Education

### EDUC 1 INTRODUCTION TO TEACHING AND EDUCATION

0170	2h 0m / week	Luke J	Online	2.0
------	--------------	--------	--------	-----

### EDUC 1L EDUCATION SERVICE LEARNING LAB

0485	3h 0m / week	Luke J	Online	1.0
------	--------------	--------	--------	-----



## Emergency Medical Services

### EMMS 170A EMERGENCY MEDICAL TECHNICIAN 1: BASIC TRAINING

0333	MW	6:00pm-9:05pm	Parker A	SPS101	7.0
	&	1h 25m / week	Parker A	SPS101	
0335	TTh	6:00pm-9:05pm	Parker A	SPS101	7.0
	&	1h 25m / week	Parker A	SPS101	

### EMMS 170B EMERGENCY MEDICAL TECHNICIAN 1: BASIC TRAINING APPLICATION

5070	4h 0m / week	Parker A	TBD	2.0
5071	4h 0m / week	Parker A	TBD	2.0

### EMMS 470A EMERGENCY MEDICAL TECHNICIAN 1: BASIC TRAINING

0499	MW	6:00pm-9:05pm	Parker A	SPS101	0.0
	&	1h 25m / week	Parker A	SPS101	
0502	TTh	6:00pm-9:05pm	Parker A	SPS101	0.0
	&	1h 25m / week	Parker A	SPS101	

### EMMS 470B EMERGENCY MEDICAL TECHNICIAN 1: BASIC TRAINING

0506	4h 0m / week	Parker A	TBD-SPS.0	
0507	4h 0m / week	Parker A	TBD-SPS.0	

### EMMS 470R EMT-1: RECERTIFICATION

0489	4h 35m / week	Parker A	SPS101	0.0
	(01/21-03/11)			
0492	3h 15m / week	Parker A	SPS101	0.0
	(03/14-05/27)			

## Engineering

### ENGR 1A INTRODUCTION TO ENGINEERING

0804	T	5:00pm-6:50pm	Hacker V	Online	3.0
	& Th	4:00pm-6:50pm	Hacker V	Online	

### ENGR 2 ENGINEERING DESIGN GRAPHICS

5069	5h 0m / week	Hacker V	Online	3.0
------	--------------	----------	--------	-----

### ENGR 4 ENGINEERING MATERIALS

0384	MW	6:00pm-8:50pm	Hurtarte J	Online	4.0
------	----	---------------	------------	--------	-----

### ENGR 12 ENGINEERING CIRCUITS

1196	4h 0m / week	Pedersen J	Online	3.0
------	--------------	------------	--------	-----

### ENGR 12L ENGINEERING CIRCUITS LABORATORY

1197	3h 0m / week	Rebold T	Online	1.0
------	--------------	----------	--------	-----

### ENGR 17 PROGRAMMING AND PROBLEM-SOLVING IN MATLAB

1198	5h 0m / week	Rebold T	Online	3.0
------	--------------	----------	--------	-----

## English

### ENGL 1A COLLEGE COMPOSITION

0023	6h 20m / week	Penney	Online	3.0	
	(03/28-05/20)				
0024	6h 20m / week	Penney	Online	3.0	
	(03/28-05/20)				
0102	MW	8:30am-9:45am	Headley	Online	3.0

0107	MW	11:00am-12:15pm	Kary B	HU101	3.0
0110	3h 0m / week		Gerard J	Online	3.0
0114	TTh	8:30am-9:45am	Harray	Online	3.0
0122	TTh	11:00am-12:15pm	Kary B	HU101	3.0
0131	3h 0m / week		Dennehy	Online	3.0
0255	W	6:00pm-8:50pm	McMillen J	HU101	3.0
0369	MW	9:30am-10:45am	Fetter E	HU102	3.0
0591	MW	11:00am-12:15pm	Fetter E	HU102	3.0
0939	3h 0m / week		Marchand H	Online	3.0
0944	MW	12:30pm-1:45pm	Revivo R	HU102	3.0
4322	TTh	9:30am-10:45am	Ibessaine	HU102	3.0
4323	TTh	9:30am-10:45am	Rodger B	HU210	3.0
4325	TTh	11:00am-12:15pm	Ibessaine	HU102	3.0
4328	6h 20m / week		Penney	Online	3.0
	(01/24-03/18)				
4330	6h 20m / week		Penney	Online	3.0
	(01/24-03/18)				
4336	3h 0m / week		Dennehy	Online	3.0
4337	3h 0m / week		Watson L	Online	3.0
4340	3h 0m / week		Watson L	Online	3.0
4341	3h 0m / week		Fujimoto S	Online	3.0

Sections below offered at the MPC Education Center in Marina:

0481	MW	9:30am-10:45am	Van Dam	MA404	3.0
4327	TTh	11:00am-12:15pm	McMillen J	MA404	3.0

SECTION	DAYS	TIME	INSTRUCTOR	ROOM	UNITS	SECTION	DAYS	TIME	INSTRUCTOR	ROOM	UNITS	SECTION	DAYS	TIME	INSTRUCTOR	ROOM	UNITS
<b>ENGL 1B INTRODUCTION TO LITERATURE</b>						<b>ENGL 25B GREAT BOOKS SEMINAR II</b>						<b>ENGL 352 COLLEGE READING STRATEGIES II</b>					
0576	MTh	8:00am-9:30am (01/20-05/19)	Farson J	MHS	3.0	0028		1h 0m / week	Gilbert P	Online	1.0	0040		1h 25m / week	Jensen K	Online	0.5
0578	TF	8:00am-9:30am (01/25-05/19)	Farson J	MHS	3.0	<b>ENGL 32 CREATIVE WRITING II</b>						<b>ENGL 400 ACADEMIC SUPPORT</b>					
4342		3h 0m / week	Gerard J	Online	3.0	0246		3h 0m / week	Marchand H	Online	3.0	4421		9h 0m / week	Gerard A	TBD	0.0
4344		3h 0m / week	Dennehy	Online	3.0	<b>ENGL 44 SURVEY OF WORLD LITERATURE I</b>						<b>English As A Second Language</b>					
<b>ENGL 2 ARGUMENTATIVE WRITING AND CRITICAL THINKING</b>						0029		3h 0m / week	Gilbert P	Online	3.0						
0275	MW	9:30am-10:45am	Eubanks K.	HU105	3.0	<b>ENGL 49 THE GREAT NOVEL</b>						<b>ENSL 11 ADVANCED READING AND WRITING</b>					
0425	MW	9:30am-10:45am	Haffa	HU207	3.0	0667		3h 0m / week	Dennehy M	Online	3.0	0326	T	1:00pm-3:15pm	VanGundy A	HU203	5.0
0436	MW	11:00am-12:15pm	Eubanks K.	HU105	3.0	<b>ENGL 51 FICTION WRITING</b>						& Th 1:00pm-3:15pm VanGundy A Online					
0582	MW	11:00am-12:15pm	Haffa	HU207	3.0	0921		3h 0m / week	Marchand H	Online	3.0	<b>ENSL 321 HIGH-BEGINNING READING AND WRITING</b>					
0750	TTh	9:30am-10:45am	Kary B	HU207	3.0	<b>ENGL 55 NOVEL WRITING II</b>						0457 TTh 8:30am-10:45am Sanders C Online 5.0					
0820	TTh	9:30am-10:45am	Eubanks K.	HU105	3.0	0313	T	6:00pm-8:50pm	Marchand H	Online	3.0	<i>Sections below offered at the MPC Education Center in Marina:</i>					
0945	TTh	11:00am-12:15pm	Converse J	HU206	3.0	<b>ENGL 101A COLLEGE COMPOSITION PLUS</b>						0163 MW 6:00pm-8:15pm Warren N MA404 5.0					
4345	TTh	12:30pm-1:45pm	Eubanks K.	HU105	3.0	0106	MW	10:00am-10:50am	Headley	Online	2.0	<b>ENSL 323 HIGH-BEGINNING SPEAKING AND LISTENING</b>					
4347		6h 20m / week (01/24-03/18)	Wehner K	Online	3.0	0108	MW	12:30pm-1:20pm	Kary B	HU101	2.0	0262 M 9:00am-10:50am Brady B HU212 4.0 & W 9:00am-10:50am Brady B Online					
4348		3h 0m / week	Pirani	Online	3.0	0112		2h 0m / week	Gerard J	Online	2.0	<b>ENSL 328 PRONUNCIATION AND SPELLING</b>					
4349		3h 0m / week	Young D	Online	3.0	0120	TTh	10:00am-10:50am	Harray	Online	2.0	0751 MW 11:00am-12:50pm Dietrich-Har Online 4.0					
4350		3h 0m / week	Osburg	Online	3.0	0123	TTh	12:30pm-1:20pm	Kary B	HU101	2.0	<b>ENSL 331 LOW-INTERMEDIATE READING AND WRITING</b>					
4354		3h 0m / week	Osburg	Online	3.0	0133		2h 0m / week	Dennehy	Online	2.0	0264 TTh 8:30am-10:45am Gorman D HU203 5.0					
4355		3h 0m / week	Young D	Online	3.0	<b>ENGL 111 ACADEMIC READING AND WRITING</b>						<i>Sections below offered at the MPC Education Center in Marina:</i>					
5076		6h 20m / week (03/28-05/20)	Wehner K	Online	3.0	0078	TTh	11:00am-12:50pm	Jonker K	HU212	4.0	0463 M 6:00pm-8:15pm Brady B Online 5.0 & W 6:00pm-8:15pm Brady B MA501					
<i>Sections below offered at the MPC Education Center in Marina:</i>						<b>ENGL 300 PERSONALIZED WRITING INSTRUCTION</b>											
0256	M	6:30pm-9:20pm	Hulanicki	MA402	3.0	4387		1h 25m / week	Lemoine S	Online	0.5						
0946	TTh	11:00am-12:15pm	Hulanicki	MA501	3.0	4389		3h 0m / week	Lemoine S	Online	1.0						
						<b>ENGL 351 COLLEGE READING STRATEGIES I</b>											
						0039		1h 25m / week	Jensen K	Online	0.5						

# CREATIVE WRITING



*Intensive and inspiring classes in multiple genres, designed to build your confidence & strengthen your skills.*

- Creative Writing II
- Fiction Writing
- Novel Writing II

“ WHERE IMAGINATION MEETS INSPIRATION ”

[www.mpc.edu/creativewriting](http://www.mpc.edu/creativewriting)



# AS A SECOND LANGUAGE

Highly interactive courses designed to help non-native English speakers communicate by gaining fluency in listening, speaking, reading, and writing English.

[www.mpc.edu/ensl](http://www.mpc.edu/ensl)

## Lower levels (1,2,3)

- Focus on fundamentals
- Highly interactive
- Supportive learning environment

## Upper levels (4,5,6)

- Focus on academic reading & writing
- Prepares students to succeed at 4-year colleges
- Level 6 classes transferable

### ENSL 334 LOW-INTERMEDIATE SPEAKING AND LISTENING

0375	MW	6:00pm-7:50pm	Sanders C	Online	4.0
4452	MW	9:00am-10:50am	Nelson J	HU203	4.0

### ENSL 336 ENGLISH SKILLS FOR SUCCESS II

0334	TTh	6:00pm-7:15pm	Gonzales L	Online	3.0
	&	2h 5m / week	Gonzales L	Online	
		(03/01-05/12)			

### ENSL 337 LOW-INTERMEDIATE ESL FOR THE WORKPLACE

0380	MTWTh	9:00am-12:10pm	Gorman D	HU202	2.0
		(01/03-01/20)			

### ENSL 342 INTERMEDIATE READING AND WRITING

4455	TTh	8:30am-10:45am	Nelson J	HU201	5.0
------	-----	----------------	----------	-------	-----

### ENSL 345 INTERMEDIATE SPEAKING AND LISTENING

4456	MW	9:00am-10:50am	May M	HU201	4.0
------	----	----------------	-------	-------	-----

### ENSL 346 HIGH-INTERMEDIATE READING AND WRITING: AMERICAN CULTURE

0266	TTh	1:00pm-3:15pm	May M	HU201	5.0
------	-----	---------------	-------	-------	-----

### ENSL 348 HIGH-INTERMEDIATE SPEAKING AND LISTENING

0175	TTh	11:00am-12:50pm	Gorman D	HU202	4.0
------	-----	-----------------	----------	-------	-----

### ENSL 400 SUPERVISED TUTORING: ESL

1142	TTh	10:00am-10:50am	Staff	TBD	0.0
		(01/31-05/26)			

### ENSL 421 HIGH-BEGINNING READING AND WRITING

0462	TTh	8:30am-10:45am	Sanders C	Online	0.0
------	-----	----------------	-----------	--------	-----

*Sections below offered at the MPC Education Center in Marina:*

0166	MW	6:00pm-8:15pm	Warren N	MA404	0.0
------	----	---------------	----------	-------	-----

### ENSL 423 HIGH-BEGINNING SPEAKING AND LISTENING

0263	M	9:00am-10:50am	Brady B	HU212	0.0
	& W	9:00am-10:50am	Brady B	Online	

### ENSL 428 PRONUNCIATION AND SPELLING

0775	MW	11:00am-12:50pm	Dietrich-Har	Online	0.0
------	----	-----------------	--------------	--------	-----

### ENSL 431 LOW-INTERMEDIATE READING AND WRITING

0265	TTh	8:30am-10:45am	Gorman D	HU202	0.0
------	-----	----------------	----------	-------	-----

*Sections below offered at the MPC Education Center in Marina:*

0471	M	6:00pm-8:15pm	Brady B	Online	0.0
	& W	6:00pm-8:15pm	Brady B	MA501	

### ENSL 434 LOW-INTERMEDIATE SPEAKING AND LISTENING

0376	MW	6:00pm-7:50pm	Sanders C	Online	0.0
4463	MW	9:00am-10:50am	Nelson J	HU203	0.0

### ENSL 436 ENGLISH SKILLS FOR SUCCESS II

0368	TTh	6:00pm-7:15pm	Gonzales L	Online	0.0
	&	2h 5m / week	Gonzales L	Online	
		(03/01-05/12)			

### ENSL 437 LOW-INTERMEDIATE ESL FOR THE WORKPLACE

0383	MTWTh	9:00am-12:10pm	Gorman D	HU202	0.0
		(01/03-01/20)			

### ENSL 442 INTERMEDIATE READING AND WRITING

4466	TTh	8:30am-10:45am	Nelson J	HU201	0.0
------	-----	----------------	----------	-------	-----

### ENSL 445 INTERMEDIATE SPEAKING AND LISTENING

4467	MW	9:00am-10:50am	May M	HU201	0.0
------	----	----------------	-------	-------	-----

### ENSL 446 HIGH-INTERMEDIATE READING AND WRITING: AMERICAN CULTURE

0267	TTh	1:00pm-3:15pm	May M	HU201	0.0
------	-----	---------------	-------	-------	-----

### ENSL 448 HIGH-INTERMEDIATE SPEAKING AND LISTENING

0176	TTh	11:00am-12:50pm	Gorman D	HU202	0.0
------	-----	-----------------	----------	-------	-----

SECTION	DAYS	TIME	INSTRUCTOR	ROOM	UNITS	SECTION	DAYS	TIME	INSTRUCTOR	ROOM	UNITS	SECTION	DAYS	TIME	INSTRUCTOR	ROOM	UNITS
---------	------	------	------------	------	-------	---------	------	------	------------	------	-------	---------	------	------	------------	------	-------

### Ethnic Studies

#### ETNC 4 MEXICAN-AMERICAN ART IN AMERICAN CULTURE

0068	MTh	11:25am-12:55pm	Cabrera K	MRNHS	3.0
0192	W	5:30pm-6:45pm	Cabrera K	Online	3.0
		& 1h 25m / week	Cabrera K	Online	

#### ETNC 5 AFRICAN-AMERICAN ARTS AND MUSIC IN AMERICAN CULTURE

0186	6h 20m / week	Cabrera K	Online	3.0	
	(03/28-05/20)				
0846	W	9:30am-10:45am	Cabrera K	SS101	3.0
	& 1h 25m / week	Cabrera K	Online		

#### ETNC 6 CULTURE IN AMERICAN FILM

0437	TTh	9:30am-10:45am	Batista V	SS104	3.0
------	-----	----------------	-----------	-------	-----

#### ETNC 10 INTRODUCTION TO SOCIAL JUSTICE

0719	6h 20m / week	Cabrera V	Online	3.0
	(01/24-03/16)			

#### ETNC 14 SOCIOLOGY OF LATINOS AND LATINAS

*Sections below offered at the MPC Education Center in Marina:*  
0741 TTh 11:00am-12:15pm Villarreal A MA401 3.0

#### ETNC 18 LATINOS IN AMERICAN GOVERNMENT

0487	3h 0m / week	Cabrera K	Online	3.0
------	--------------	-----------	--------	-----

#### ETNC 22 ASIAN AMERICANS AND PACIFIC ISLANDERS IN AMERICAN SOCIETY

0049	MTh	1:35pm-3:05pm	Batista V	MRNHS	3.0
0748	6h 20m / week	Cabrera V	Online	3.0	
	(03/28-05/20)				

#### ETNC 23 CHICANO HISTORY 1848 TO PRESENT

0783	MW	11:00am-12:15pm	Serena D	Online	3.0
------	----	-----------------	----------	--------	-----

### Fashion

#### FASH 20 APPAREL PRODUCTION

0149	Th	9:00am-2:05pm	Schneider E	FC106	3.0
------	----	---------------	-------------	-------	-----

### Fire Protection Technology

Most of the Fire Protection courses are offered at the MPC Public Safety Training Center, 2642 Colonel Durham St., Seaside, CA 93955. Contact the Public Safety Training Center for additional information 831-646-4240.

#### FPTC 1 PRINCIPLES OF EMERGENCY SERVICES

5093	W	6:30pm-9:20pm	Reed Roger	SPS119	3.0
------	---	---------------	------------	--------	-----

#### FPTC 2 FIRE BEHAVIOR AND COMBUSTION

0448	3h 0m / week	Goodwin	Online	3.0
------	--------------	---------	--------	-----

#### FPTC 4 BUILDING CONSTRUCTION FOR FIRE PREVENTION

0178	M	6:30pm-9:20pm	Prado A	SPS119	3.0
------	---	---------------	---------	--------	-----

#### FPTC 100 RESCUE SYSTEMS 1: BASIC RESCUE SKILLS

1089	42h 25m / week	Smith C	CDIFGR	1.0
	(01/03-01/07)			



SECTION	DAYS	TIME	INSTRUCTOR	ROOM	UNITS	SECTION	DAYS	TIME	INSTRUCTOR	ROOM	UNITS	SECTION	DAYS	TIME	INSTRUCTOR	ROOM	UNITS
<b>FPTC 105A FIREFIGHTER I ACADEMY</b>						<b>FPTC 130E COMPANY OFFICER 2E - WILDLAND INCIDENT OPERATIONS</b>						<b>FPTC 401 COMMUNITY EMERGENCY RESPONSE TRAINING</b>					
0418	TTh	6:00pm-9:50pm	Greenlee G	SPS119	14.5	0513		46h 40m / week (03/14-03/18)	Goodwin	MCOFTO	2.0	1094		24h 25m / week (01/10-01/14)	Staff		SPS119 0.0
	& SatSun	6:00am-7:50am	Greenlee G	SPS119		<b>FPTC 135 ETHICAL LEADERSHIP</b>						<b>French</b>					
	& SatSun	8:00am-11:50am	Greenlee G	SPS119		1085		8h 25m / week (01/14-01/14)	Staff		SPS119 0.5	<b>FREN 1A ELEMENTARY FRENCH I</b>					
	& SatSun	1:00pm-4:50pm	Greenlee G	SPS119		<b>FPTC 140 I-300 INTERMEDIATE INCIDENT COMMAND SYSTEM</b>						0773 MW 5:30pm-7:45pm Gonzales L HU107 5.0					
<b>FPTC 105B FIREFIGHTER I ACADEMY APPLICATION</b>						<b>FPTC 142 I-200 BASIC INCIDENT COMMAND SYSTEM</b>						0922 MW 11:00am-1:15pm Gonzales L HU107 5.0					
4489		14h 0m / week	Greenlee G	SPS119	6.0	1088		16h 10m / week (02/24-02/25)	Smith C	CDFGR	0.5	<b>FREN 2A INTERMEDIATE FRENCH</b>					
<b>FPTC 112D INSTRUCTOR I - INSTRUCTIONAL METHODOLOGY</b>						<b>FPTC 213 SKILLS AND KNOWLEDGE UPDATE FOR FULL-TIME FIREFIGHTERS</b>						0789 TTh 11:00am-1:15pm Gonzales L HU107 5.0					
0514		40h 40m / week (03/28-04/01)	Goodwin	MCOFTO	1.0	0420		4h 40m / week	Blaha R	SFD	3.0	<b>Gender &amp; Women's Studies</b>					
1093		40h 40m / week (01/17-01/21)	Smith C	CDFGR	1.0	0423		4h 40m / week	Brotemarkle	HFD	3.0	<b>GWOS 1 INTRODUCTION TO GENDER AND WOMEN'S STUDIES</b>					
<b>FPTC 117 VEHICLE EXTRICATION</b>						0505		4h 40m / week	Courtney J	MFD	3.0	0240 3h 0m / week Davis D Online 3.0					
1069		24h 10m / week (02/28-03/04)	Staff	CDFGR	0.5	0546		4h 40m / week	Urquides	MCRFPD	3.0	<b>GWOS 4 GENDER, SEXUALITY, AND POPULAR CULTURE</b>					
<b>FPTC 118 LOW-ANGLE ROPE RESCUE</b>						0686		4h 40m / week	Lundgren J	MARFD	3.0	0814 3h 0m / week Davis D Online 3.0					
1071		24h 10m / week (02/28-03/04)	Smith C	CDFGR	0.5	1151		4h 40m / week	Smith C	CDFGR	3.0	<b>GWOS 12 WOMEN IN UNITED STATES HISTORY</b>					
<b>FPTC 130B COMPANY OFFICER 2B - GENERAL ADMINISTRATIVE</b>						<b>FPTC 214 SKILLS &amp; KNOWLEDGE UPDATE FOR VOLUNTEER/RESERVE FIREFIGHTERS</b>						0158 6h 20m / week (01/24-03/18) Davis D Online 3.0					
1080		22h 25m / week (05/23-05/27)	Smith C	CDFGR	1.0	0553		1h 30m / week	Fisher F	CFPD	1.0	0332 MW 9:30am-10:45am Mullins E SS202 3.0					
<b>FPTC 130C COMPANY OFFICER 2C - FIRE INSPECTIONS AND INVESTIGATIONS</b>						0554		2h 20m / week	Goetz C	MCFB	1.5	0731 6h 20m / week (03/28-05/20) Davis D Online 3.0					
0509		41h 10m / week (01/03-01/07)	Goodwin	MCOFTO	2.0	0555		1h 30m / week	Blaha R	SFD	1.0	0800 MW 11:00am-12:15pm Mullins E SS202 3.0					
1081		41h 10m / week (05/30-06/03)	Smith C	CDFGR	2.0	0556		1h 30m / week	Smith C	BSFB	1.0	4949 TTh 12:30pm-1:45pm Mullins E SS202 3.0					
<b>FPTC 130D COMPANY OFFICER 2D - ALL-RISK COMMAND OPERATIONS</b>						0557		1h 30m / week	Urquides	MCRFPD	1.0	<b>GWOS 15 INTRODUCTION TO LGBTQ GLOBAL LITERATURES</b>					
1082		46h 40m / week (02/07-02/11)	Greenlee G	MCOFTO	2.0	0674		1h 30m / week	Lundgren J	MARFD	1.0	0103 3h 0m / week Davis D Online 3.0					

## BE HEARD. HAVE YOUR SAY. MAKE A DIFFERENCE!

The Associated Students of Monterey Peninsula College (ASMP) are responsible for the coordination and support of student activities and organizations.

Located in the Student Center ASMP:

- Advocates for students' needs
- Provides Student ID cards
- Runs the on-campus Food Pantry

Contact Julie Osborne at (831) 646-4192 or email [josborne@mpc.edu](mailto:josborne@mpc.edu)



SECTION DAYS TIME INSTRUCTOR ROOM UNITS SECTION DAYS TIME INSTRUCTOR ROOM UNITS SECTION DAYS TIME INSTRUCTOR ROOM UNITS



**GWOS 40 INTRODUCTION TO FEMINIST THEORY**

4952 3h 0m / week Davis D Online 3.0

**Gentrain**

**GENT 12 THE AGE OF PROGRESS (1815-1870)**

0100 TTh 8:45am-10:50am Haffa LF103 1.0  
 & TTh 8:45am-10:50am Logan LF103  
 & TTh 8:45am-10:50am Madsen LF103  
 & TTh 8:45am-10:50am Spoto S LF103  
 (01/25-02/17)

**GENT 13 THE END OF INNOCENCE (1870-1918)**

0070 TTh 8:45am-10:50am Haffa LF103 1.0  
 & TTh 8:45am-10:50am Logan LF103  
 & TTh 8:45am-10:50am Madsen LF103  
 & TTh 8:45am-10:50am Spoto S LF103  
 (02/22-03/17)

**GENT 14 BETWEEN THE WARS (1918-1945)**

0071 TTh 8:45am-10:50am Haffa LF103 1.0  
 & TTh 8:45am-10:50am Logan LF103  
 & TTh 8:45am-10:50am Madsen LF103  
 & TTh 8:45am-10:50am Spoto S LF103  
 (03/29-04/21)

**GENT 15 WORLD WAR II TO THE PRESENT (1945-PRESENT)**

0076 TTh 8:45am-10:50am Haffa LF103 1.0  
 & TTh 8:45am-10:50am Logan LF103  
 & TTh 8:45am-10:50am Madsen LF103  
 & TTh 8:45am-10:50am Spoto S LF103  
 (04/26-05/19)

**GENT 23 THE MODERN WORLD (1870-PRESENT)**

0077 TTh 8:45am-10:50am Haffa LF103 3.0  
 & TTh 8:45am-10:50am Logan LF103  
 & TTh 8:45am-10:50am Madsen LF103  
 & TTh 8:45am-10:50am Spoto S LF103  
 (02/22-05/19)

**GENT 412 THE AGE OF PROGRESS (1815-1870)**

0101 TTh 8:45am-10:50am Haffa LF103 0.0  
 & TTh 8:45am-10:50am Logan LF103  
 & TTh 8:45am-10:50am Madsen LF103  
 & TTh 8:45am-10:50am Spoto S LF103  
 (01/25-02/17)

**GENT 413 THE END OF INNOCENCE (1870-1918)**

0088 TTh 8:45am-10:50am Haffa LF103 0.0  
 & TTh 8:45am-10:50am Logan LF103  
 & TTh 8:45am-10:50am Madsen LF103  
 & TTh 8:45am-10:50am Spoto S LF103  
 (02/22-03/17)

**GENT 414 BETWEEN THE WARS (1918-1945)**

0095 TTh 8:45am-10:50am Haffa LF103 0.0  
 & TTh 8:45am-10:50am Logan LF103  
 & TTh 8:45am-10:50am Madsen LF103  
 & TTh 8:45am-10:50am Spoto S LF103  
 (03/29-04/21)

**GENT 415 WORLD WAR II TO THE PRESENT (1945-PRESENT)**

0096 TTh 8:45am-10:50am Haffa LF103 0.0  
 & TTh 8:45am-10:50am Logan LF103  
 & TTh 8:45am-10:50am Madsen LF103  
 & TTh 8:45am-10:50am Spoto S LF103  
 (04/26-05/19)

**Geography**

**GEOG 4 INTRODUCTION TO HUMAN GEOGRAPHY**

0050 3h 0m / week Ducote K Online 3.0

**Geology**

**GEO 2 PHYSICAL GEOLOGY**

0787 3h 0m / week Turrini Smit Online 3.0  
 4517 3h 0m / week Turrini Smit Online 3.0

**GEO 2L PHYSICAL GEOLOGY LABORATORY**

0799 F 12:00pm-2:50pm Turrini Smit Online 1.0  
 0802 F 8:00am-10:50am Turrini Smit Online 1.0

**GEO 3 HISTORICAL GEOLOGY**

0273 3h 0m / week Hochstaedter Online 3.0

**GEO 3L HISTORICAL GEOLOGY LABORATORY**

0276 Th 11:00am-1:50pm Hochstaedter PS106 1.0

**GEO 9 EARTH CATASTROPHES AND DISASTERS**

0007 3h 0m / week Garcia Garci Online 3.0  
 0382 3h 0m / week Garcia Garci Online 3.0

**GEO 12 EARTH OCEAN CLIMATE: INTRODUCTION TO EARTH SCIENCE**

0367 3h 0m / week Staff Online 3.0

**GEO 12L EARTH OCEAN CLIMATE: INTRODUCTION TO EARTH SCIENCE LAB**

Sections below offered at the MPC Education Center in Marina:  
 0374 Th 5:30pm-8:20pm Staff MA104 1.0

# READY TO WORK! PROGRAMS

BEGIN YOUR PATH TO A REWARDING CAREER THIS SPRING AT MPC!



build new skills



earn a certificate



complete a degree

- Accounting & Business
- Automotive Technology
- Dental & Medical Assisting
- Early Childhood Education
- Horticulture
- Networking & Security
- Nutrition & Dietetics
- Sustainable Hospitality



Don't miss out, learn more at [www.mpc.edu/careereducation](http://www.mpc.edu/careereducation)

## Global Studies

### GLST 2 GLOBAL ISSUES

0231	6h 20m / week	Blanchard L	Online	3.0
	(03/28-05/20)			

## Health

### HLTH 4 HEALTHY LIVING

0155	TTh 11:00am-12:15pm	Shirley K	LS102	3.0
0353	6h 20m / week	Shirley K	Online	3.0
	(03/28-05/20)			
4527	3h 0m / week	Shirley K	Online	3.0

### HLTH 5 FIRST AID AND CPR

4528	Th 1:00pm-4:50pm	Parker A	SPS101	3.0
	& Th 1:00pm-4:50pm	Roth L	SPS101	

## History

### HIST 5 WESTERN CIVILIZATION II

0214	3h 0m / week	Finell J	Online	3.0
------	--------------	----------	--------	-----

### HIST 7 WORLD HISTORY TO 1500

0013	3h 0m / week	Mullins E	Online	3.0
------	--------------	-----------	--------	-----

### HIST 8 WORLD HISTORY SINCE 1500

0053	3h 0m / week	Finell J	Online	3.0
0747	3h 0m / week	Finell J	Online	3.0

### HIST 12 WOMEN IN UNITED STATES HISTORY

0160	6h 20m / week	Davis D	Online	3.0
	(01/24-03/18)			
0222	6h 20m / week	Davis D	Online	3.0
	(03/28-05/20)			
0327	MW 9:30am-10:45am	Mullins E	SS202	3.0
0801	MW 11:00am-12:15pm	Mullins E	SS202	3.0
4534	TTh 12:30pm-1:45pm	Mullins E	SS202	3.0

### HIST 17 UNITED STATES HISTORY TO 1877

0230	3h 0m / week	Jeffrey C	Online	3.0
------	--------------	-----------	--------	-----

0395	6h 20m / week	Jeffrey C	Online	3.0
	(03/28-05/20)			
4538	TTh 2:00pm-3:15pm	Mullins E	SS202	3.0
4539	3h 0m / week	Jeffrey C	Online	3.0

### HIST 18 UNITED STATES HISTORY FROM 1865

0005	3h 0m / week	Finell J	Online	3.0
0292	3h 0m / week	Finell J	Online	3.0
0539	MTh 8:00am-9:30am	Esaki K	SHS	3.0
	(02/10-6/3)			
0581	2h 45m / week	Whitney J	Online	3.0
0601	2h 45m / week	McCarty J	Online	3.0
0602	MT 2:10pm-3:00pm	Stafford M	CHS	3.0
	& W 1:35pm-3:10pm	Stafford M	CHS	
	(01/18-05/11)			
0603	MT 1:15pm-2:05pm	Stafford M	CHS	3.0
	& Th 12:40pm-2:15pm	Stafford M	CHS	
	(01/18-05/12)			
0604	MT 9:40am-10:30am	McCarty J	CHS	3.0
	& W 9:40am-11:15am	McCarty J	CHS	
	(01/18-05/11)			



SECTION	DAYS	TIME	INSTRUCTOR	ROOM	UNITS	SECTION	DAYS	TIME	INSTRUCTOR	ROOM	UNITS	SECTION	DAYS	TIME	INSTRUCTOR	ROOM	UNITS
0605	MT & W	11:40am-12:35pm 11:20am-12:55pm	McCarty J	CHS	3.0	<b>HOSP 42 WINE SERVICE</b>						<b>HOSP 78 BAKESHOP: BASIC BAKING TECHNIQUES</b>					
		(01/18-05/11)	McCarty J	CHS		0129	M	6:00pm-8:50pm 1h 35m / week	Eriksen D Eriksen D	BMC105 Online	1.5	0592	M & WF	9:20am-10:10am 8:30am-10:10am	Erickson J Erickson J	PGHS	1.0
0606		2h 45m / week	McCarty J	Online	3.0			(01/24-03/14)						(01/03-03/04)			
0611		2h 45m / week	McCarty J	Online	3.0	<b>HOSP 44 BEER, WINE AND SPIRITS</b>						4630	WTh	8:30am-12:50pm	Adam A	FC104	1.0
0613	MT & Th	10:50am-11:40am 10:25am-12:00pm	McCarty J	CHS	3.0	0139	M	6:00pm-8:50pm & 2h 40m / week	Eriksen D Eriksen D	BMC105 Online	1.5			(01/26-02/17)			
		(01/18-05/12)						(03/28-05/09)				<b>HOSP 82 BAKESHOP: CAKES, TORTES AND DECORATING TECHNIQUES</b>					
0625		2h 45m / week	McCarty J	Online	3.0	<b>HOSP 51 INTRODUCTION TO THE HOSPITALITY INDUSTRY</b>						0144	WTh	8:30am-12:50pm	Adam A	FC104	1.0
0626		2h 45m / week	Stafford M	Online	3.0	0927	Th &	4:30pm-5:20pm 5h 20m / week	Jansen M Jansen M	Online Online	3.0			(02/23-03/17)			
0648		2h 45m / week	Stafford M	Online	3.0			(03/28-05/20)				0593	M & WF	11:25am-12:15pm 10:30am-12:15pm	Erickson J Erickson J	PGHS	1.0
1138	TF	11:25am-12:55pm	Esaki K	SHS	3.0	<b>HOSP 58 SANITATION, SAFETY, EQUIPMENT</b>								(01/05-03/04)			
5107		3h 0m / week	Whitney J	Online	3.0	0141	M	8:30am-11:20am	Wilson A	FC104	3.0	<b>HOSP 83 BAKESHOP: FRENCH PASTRIES AND RESTAURANT-STYLE DESSERTS</b>					
<b>HIST 23 CHICANO HISTORY 1848 TO PRESENT</b>						<b>HOSP 64 CUSTOMER SERVICE</b>						0370	WTh	8:30am-12:50pm	Adam A	FC104	1.0
0785	MW	11:00am-12:15pm	Serena D	Online	3.0	0500	Th &	4:30pm-5:20pm 5h 20m / week	Jansen M Jansen M	Online Online	3.0			(04/06-04/28)			

**Horticulture**

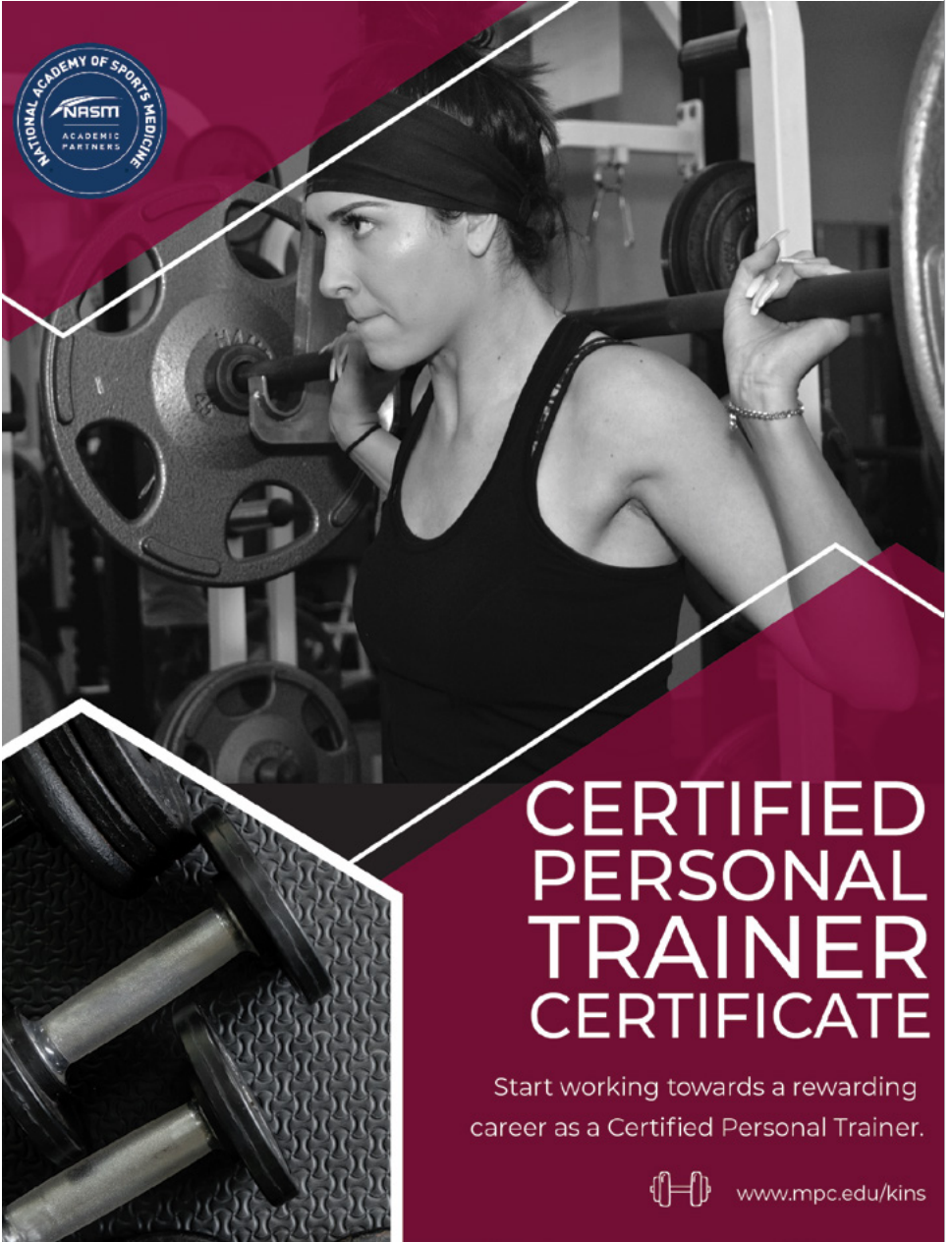
<b>HORT 52 INTRODUCTION TO HORTICULTURE II</b>					
1023	M &	6:00pm-8:50pm 1h 0m / week	Hofmann J Hofmann J	LS104 Online	3.0
<b>HORT 63 PLANT PROPAGATION</b>					
0277	T & Th	6:00pm-7:50pm 6:00pm-7:50pm	Wheat A Wheat A	Online LS104	3.0
<b>HORT 78 INTEGRATED PEST MANAGEMENT</b>					
0280	W	6:00pm-9:50pm	Staff	LS104	3.0
<b>HORT 202 LANDSCAPE PRUNING</b>					
0121	Sat & Sat	9:00am-11:50am 12:30pm-3:05pm	Quintanilla Quintanilla	LS104 OUTDOOR	0.5
		(04/30-05/07)			
<b>HORT 210 CURRENT TOPICS IN HORTICULTURE</b>					
1026	Sat & Sat	9:00am-10:15am 11:30am-2:00pm	Quintanilla Quintanilla	LS104 OUTDOOR	0.5
		(04/16-04/23)			

**Hospitality**

<b>HOSP 20 CATERING</b>					
0118	F	9:00a.-2:20pm	Jansen M	FC104	2.0
		(1/28-4/29)			
0590	M & WF	11:25am-12:15pm 10:30am-12:15pm	Erickson J Erickson J	PGHS PGHS	2.0
		(03/09-05/27)			
<b>HOSP 21 URBAN AGRICULTURE CULINARY ARTS</b>					
0477	M	12:00pm-2:25pm	Caughman J	FC104	1.5
<b>HOSP 23 CULINARY FOUNDATIONS I</b>					
0652	T	8:30am-1:20pm	Caughman J	FC104	3.0



SECTION	DAYS	TIME	INSTRUCTOR	ROOM	UNITS	SECTION	DAYS	TIME	INSTRUCTOR	ROOM	UNITS	SECTION	DAYS	TIME	INSTRUCTOR	ROOM	UNITS	
<b>HOSP 84</b>	<b>CHOCOLATE I: INTRODUCTION TO CHOCOLATE</b>																	
0656	WThF	8:30am-12:45pm	Adam A	FC104	0.5													
		(05/20-05/27)																
<b>HOSP 87</b>	<b>BAKESHOP: REGIONAL FRENCH DESSERTS</b>																	
0371	WThF	8:30am-12:50pm	Adam A	FC104	1.0													
		(05/04-05/19)																
<b>HOSP 88</b>	<b>CHOCOLATE II: CHOCOLATE AND CONFECTIONS</b>																	
0658	TWThF	8:30am-12:45pm	Adam A	FC104	0.5													
		(05/31-06/03)																
<b>HOSP 420</b>	<b>CATERING</b>																	
0476	F	9:00am-2:20pm	Jansen M	FC104	0.0													
		(1/28-4/29)																
<b>HOSP 421</b>	<b>URBAN AGRICULTURE CULINARY ARTS</b>																	
0480	F	8:30am-1:35pm	Caughman J	FC104	0.0													
<b>HOSP 423</b>	<b>CULINARY FOUNDATIONS I</b>																	
0652	T	8:30am-1:20pm	Caughman J	FC104	0.0													
<b>HOSP 442</b>	<b>WINE SERVICE</b>																	
0130	M	6:00pm-8:50pm	Eriksen D	BMC105	0.0													
	&	1h 35m / week	Eriksen D	Online														
		(01/24-03/14)																
<b>HOSP 444</b>	<b>BEER, WINE AND SPIRITS</b>																	
0140	M	6:00pm-8:50pm	Eriksen D	BMC105	1.5													
	&	2h 40m / week	Eriksen D	Online														
		(03/28-05/09)																
<b>HOSP 464</b>	<b>CUSTOMER SERVICE</b>																	
0142	Th	4:30pm-5:20pm	Jansen M	Online	0.0													
	&	5h 20m / week	Jansen M	Online														
		(01/24-03/18)																
<b>HOSP 478</b>	<b>BAKESHOP: BASIC BAKING TECHNIQUES</b>																	
1125	WTh	8:30am-12:50pm	Adam A	FC104	0.0													
		(1/26-2/17)																
<b>HOSP 482</b>	<b>BAKESHOP: CAKES, TORTES AND DECORATING TECHNIQUES</b>																	
0146	WTh	8:30am-12:50pm	Adam A	FC104	0.0													
		(2/23-3/17)																
<b>HOSP 483</b>	<b>BAKESHOP: FRENCH PASTRIES AND RESTAURANT-STYLE DESSERTS</b>																	
1127	WTh	8:30am-12:50pm	Adam A	FC104	0.0													
		(04/06-04/28)																
<b>HOSP 484</b>	<b>CHOCOLATE I: INTRODUCTION TO CHOCOLATE</b>																	
0657	WThF	8:30am-12:45pm	Adam	FC104	0.0													
		(05/20-05/27)																
<b>HOSP 487</b>	<b>BAKESHOP: REGIONAL FRENCH DESSERTS</b>																	
1128	WThF	8:30am-12:50pm	Adam A	FC104	0.0													
		(05/04-05/19)																
<b>HOSP 488</b>	<b>CHOCOLATE II: CHOCOLATE AND CONFECTIONS</b>																	
0660	TWThF	8:30am-12:45pm	Adam A	FC104	0.0													
		(05/31-06/03)																
<b>HUMA 30</b>	<b>HUMANITIES IN MULTICULTURAL AMERICA</b>																	
0456	MTWThF	9:00am-12:35pm	Ramsden-Scot	HU105	3.0													
		(01/03-01/20)																
<b>HUMA 40</b>	<b>INTRODUCTION TO FEMINIST THEORY</b>																	
4558		3h 0m / week	Davis D	Online	3.0													
<b>HUMA 10</b>	<b>EXPLORATION OF VALUES IN LIVING</b>																	
4556	TTh	11:00am-12:15pm	Eubanks K.	HU105	3.0													
<b>INDS 440</b>	<b>INTRODUCTION TO THE MONTEREY STATE HISTORICAL PARK</b>																	
1092		8h 45m / week	Mar S	CCLK	0.0													



NATIONAL ACADEMY OF SPORTS MEDICINE  
**NASM**  
 ACADEMIC PARTNERS

# CERTIFIED PERSONAL TRAINER CERTIFICATE

Start working towards a rewarding career as a Certified Personal Trainer.

[www.mpc.edu/kins](http://www.mpc.edu/kins)

## Humanities

## Interdisciplinary Studies

SECTION	DAYS	TIME	INSTRUCTOR	ROOM	UNITS	SECTION	DAYS	TIME	INSTRUCTOR	ROOM	UNITS	SECTION	DAYS	TIME	INSTRUCTOR	ROOM	UNITS
<b>Japanese</b>						<b>Law Enforcement Training Program</b>											
<b>JPNS 1A ELEMENTARY JAPANESE I</b>						For more information on these and other Law Enforcement Training courses, please visit the South Bay Regional Public Safety Training Consortium website at <a href="http://theacademy.ca.gov/">http://theacademy.ca.gov/</a> or call (408) 229-4299.						0994 48h 40m / week (04/30-05/20) Vaughn Linda SNUOSE 4.0					
4569	MW	6:00pm-8:15pm	Ogaki T	HU106	5.0	<b>LETP 180 CITIZEN'S ACADEMY</b>						0911 5h 5m / week (03/16-04/13) Vaughn Linda SNUOSE 1.0					
<b>JPNS 1B ELEMENTARY JAPANESE II</b>												<b>LETP 201 VICE INVESTIGATIONS</b>					
5111	TTh	6:00pm-8:15pm	Ogaki T	HU106	5.0							0977 39h 5m / week (03/07-03/11) Vaughn Linda SNUOSE 2.0					
<b>Kinesiology</b>						<b>LETP 108 EXPLORER ACADEMY</b>						0995 39h 5m / week (02/21-02/25) Vaughn Linda SNUOSE 2.0					
<b>KINS 40 INTRODUCTION TO KINESIOLOGY</b>						1095 7h 5m / week Vaughn Linda SNUOSE 3.5						<b>LETP 202 FINANCIAL CRIMES INVESTIGATION</b>					
0504	TTh	11:00am-12:15pm	O'Hare	PE105	3.0	<b>LETP 130 DEVELOPING A PERSONAL PHILOSOPHY OF LEADERSHIP</b>						0608 40h 10m / week (01/31-02/04) Vaughn Linda SNUOSE 2.0					
1170	3h 0m / week		O'Hare	Online	3.0	1044 24h 0m / week Vaughn Linda SNUOSE 0.5 & 24h 0m / week Vaughn Linda SNUOSE (03/21-03/23)						0978 40h 10m / week (04/18-04/22) Vaughn Linda SNUOSE 2.0					
<b>KINS 43 THEORY OF COACHING</b>						<b>LETP 132 ORGANIZATIONAL LEADERSHIP</b>						<b>LETP 203 ROBBERY INVESTIGATIONS</b>					
0413	3h 0m / week		Spiering	Online	3.0	0851 4h 25m / week Vaughn Linda SNUOSE 2.5 1048 4h 25m / week Vaughn Linda SNUOSE 2.5						0609 40h 25m / week (03/28-04/01) Vaughn Linda SNUOSE 1.0					
<b>KINS 45 INTRODUCTION TO CAREERS IN SPORTS MEDICINE AND ALLIED HEALTH</b>						<b>LETP 144A P.O.S.T. INTENSIVE BASIC ACADEMY I</b>						0612 40h 25m / week (06/06-06/10) Vaughn Linda SNUOSE 1.0					
0930	6h 20m / week (03/28-05/20)		O'Hare	Online	3.0	0328 30h 5m / week Vaughn Linda SNUOSE 12.0 (10/18-01/24)						<b>LETP 204 INVESTIGATION CORE</b>					
<b>KINS 47 PRINCIPLES OF EXERCISE PRESCRIPTION AND PROGRAM DESIGN</b>						<b>LETP 144B P.O.S.T. INTENSIVE BASIC ACADEMY II</b>						0542 40h 5m / week Vaughn Linda SNUOSE 2.0 (05/16-05/27)					
0072	3h 0m / week		Benedetti J	Online	3.0	0831 34h 35m / week Vaughn Linda SNUOSE 12.0 (11/01-02/04)						0544 40h 5m / week Vaughn Linda SNUOSE 2.0 (04/11-04/22)					
<b>KINS 48 PSYCHOLOGY OF FITNESS AND SPORT PERFORMANCE</b>						<b>LETP 145A P.O.S.T. BASIC ACADEMY III</b>						0549 40h 5m / week Vaughn Linda SNUOSE 2.0 (03/14-03/25)					
0074	3h 0m / week		O'Hare	Online	3.0	1078 41h 5m / week Vaughn Linda SNUOSE 4.5 (05/01-05/27)						0550 40h 5m / week Vaughn Linda SNUOSE 2.0 (03/14-03/25)					
<b>KINS 50 ORIENTATION FOR ATHLETES</b>						<b>LETP 145B P.O.S.T. BASIC ACADEMY MODULAR II</b>						0559 40h 5m / week Vaughn Linda SNUOSE 2.0 (01/31-02/10)					
4813	5h 35m / week (02/07-03/18)		Spiering	Online	2.0	1114 40h 0m / week Vaughn Linda SNUOSE 8.0 (01/31-03/18)						0619 40h 5m / week Vaughn Linda SNUOSE 2.0 (03/21-04/01)					
<b>KINS 51 FITNESS AND WELLNESS STRATEGIES</b>						<b>LETP 145C P.O.S.T. BASIC ACADEMY I</b>						1118 5h 40m / week Vaughn Linda SNUOSE 2.0 (01/03-04/09)					
4839	3h 40m / week (01/31-04/08)		Gamble E	Online	2.0	1115 38h 45m / week Vaughn Linda SNUOSE 13.0 (01/24-04/29)						<b>LETP 205 OFFICER-INVOLVED SHOOTING AND DEATH INVESTIGATION</b>					
<b>KINS 60 FITNESS EXERCISE PHYSIOLOGY</b>						<b>LETP 146 BASIC POLICE REQUALIFICATION COURSE</b>						0979 39h 50m / week Vaughn Linda SNUOSE 1.0 (04/25-04/29)					
0081	2h 10m / week (03/28-05/20)		Gamble E	Online	1.0	0472 48h 40m / week Vaughn Linda SNUOSE 4.0 (04/25-05/13)						0996 39h 50m / week Vaughn Linda SNUOSE 1.0 (03/21-03/25)					
<b>KINS 63 FITNESS ANATOMY AND KINESIOLOGY</b>												0997 39h 50m / week Vaughn Linda SNUOSE 1.0 (01/03-01/07)					
0755	4h 15m / week (04/04-05/27)		O'Hare	Online	2.0	0993 48h 40m / week Vaughn Linda SNUOSE 4.0 (03/14-04/01)						1120 39h 50m / week Vaughn Linda SNUOSE 1.0 (01/24-01/28)					
<b>KINS 92 PRACTICAL EXPERIENCE IN PERSONAL TRAINING</b>												<b>LETP 207 HOMICIDE INVESTIGATION</b>					
0099	3h 0m / week		Moldenhauer	Online	1.0							0560 40h 15m / week Vaughn Linda SNUOSE 2.0 (01/03-01/14)					
												0561 40h 15m / week Vaughn Linda SNUOSE 2.0 (05/02-05/13)					
												0622 40h 15m / week Vaughn Linda SNUOSE 2.0 (02/28-03/11)					

SECTION	DAYS	TIME	INSTRUCTOR	ROOM	UNITS	SECTION	DAYS	TIME	INSTRUCTOR	ROOM	UNITS	SECTION	DAYS	TIME	INSTRUCTOR	ROOM	UNITS	
0623		40h 15m / week (05/30-06/10)	Vaughn Linda	SNJOSE	2.0	<b>LETP 232 ADVANCED PEACE OFFICER TRAINING</b>						<b>LETP 236 ADVANCED OFFICER SKILLS II</b>						
0624		40h 15m / week (05/02-05/13)	Vaughn Linda	SNJOSE	2.0	0377		1h 40m / week (10/16-01/23)	Vaughn Linda	SNJOSE	0.5	1101		40h 15m / week (05/16-05/20)	Vaughn Linda	SNJOSE	1.0	
1117		40h 15m / week (01/31-02/10)	Vaughn Linda	SNJOSE	2.0	0427		2h 25m / week (10/30-01/23)	Vaughn Linda	SNJOSE	0.5	<b>LETP 237 FIREARMS INSTRUCTOR</b>						
<b>LETP 208 CHILD ABUSE INVESTIGATION</b>						0429		2h 10m / week (11/06-01/23)	Vaughn Linda	SNJOSE	0.5	1102		40h 15m / week (04/04-04/08)	Vaughn Linda	SNJOSE	1.0	
0566		40h 10m / week (03/07-03/11)	Vaughn Linda	SNJOSE	1.0	0430		32h 0m / week (02/05-02/06)	Vaughn Linda	SNJOSE	0.5	<b>LETP 238 TACTICAL PATROL RIFLE INSTRUCTOR</b>						
0627		40h 10m / week (04/25-04/29)	Vaughn Linda	SNJOSE	1.0	0431		26h 30m / week (04/11-04/22)	Vaughn Linda	SNJOSE	1.0	1103		40h 15m / week (03/21-03/26)	Vaughn Linda	SNJOSE	1.0	
<b>LETP 209 SEXUAL ASSAULT INVESTIGATION</b>						0434		26h 30m / week (03/05-03/06)	Vaughn Linda	SNJOSE	0.5	<b>LETP240.25 SUPERVISORY UPDATE</b>						
0568		40h 10m / week (05/09-05/13)	Vaughn Linda	SNJOSE	1.0	0435		24h 0m / week (03/09-03/11)	Vaughn Linda	SNJOSE	0.5	0749		20h 5m / week (01/04-01/06)	Vaughn Linda	SNJOSE	0.5	
0570		40h 10m / week (04/04-04/08)	Vaughn Linda	SNJOSE	1.0	0467		26h 30m / week (02/14-02/15)	Vaughn Linda	SNJOSE	0.5	<b>LETP 241 COMMUNITY SERVICE OFFICER</b>						
0573		40h 10m / week (02/21-02/25)	Vaughn Linda	SNJOSE	1.0	0468		24h 0m / week (03/15-03/17)	Vaughn Linda	SNJOSE	0.5	1105		43h 20m / week (01/31-03/11)	Vaughn Linda	SNJOSE	9.0	
0632		40h 10m / week (01/10-01/14)	Vaughn Linda	SNJOSE	1.0	0526		24h 0m / week (04/05-04/07)	Vaughn Linda	SNJOSE	0.5	<b>LETP 242 PEACE OFFICER ASSOCIATION TRAINING</b>						
0634		40h 10m / week (02/21-02/25)	Vaughn Linda	SNJOSE	1.0	0551		1h 30m / week	Vaughn Linda	SNJOSE	0.5	0636		21h 20m / week (12/28-02/04)	Vaughn Linda	SNJOSE	2.5	
0635		40h 10m / week (04/25-04/29)	Vaughn Linda	SNJOSE	1.0	0562		5h 15m / week (04/05-05/03)	Vaughn Linda	SNJOSE	0.5	0692		34h 35m / week (12/10-01/21)	Vaughn Linda	SNJOSE	4.0	
1119		40h 10m / week (01/10-01/14)	Vaughn Linda	SNJOSE	1.0	0565		1h 45m / week (02/03-05/04)	Vaughn Linda	SNJOSE	0.5	0980		40h 0m / week (02/15-02/18)	Vaughn Linda	SNJOSE	1.0	
<b>LETP 211 HUMAN TRAFFICKING</b>						<b>LETP 232.4 ADVANCED PEACE OFFICER TRAINING: S.W.A.T. UPDATE</b>						1152		32h 0m / week (01/18-01/21)	Vaughn Linda	SNJOSE	1.0	
0998		39h 5m / week (02/07-02/10)	Vaughn Linda	SNJOSE	2.0	0848		2h 15m / week	Vaughn Linda	SNJOSE	1.0	<b>LETP 245 FIELD TRAINING PROGRAM</b>						
0999		39h 5m / week (04/11-04/15)	Vaughn Linda	SNJOSE	2.0	<b>LETP232.31 ADVANCED PEACE OFFICER TRAINING: ADVANCED S.W.A.T. 40 HOURS</b>						0524		40h 0m / week	Vaughn Linda	SNJOSE	15.5	
<b>LETP 213 PUBLIC INFORMATION OFFICER</b>						1098		40h 10m / week (05/02-05/06)	Vaughn Linda	SNJOSE	1.0	0536		40h 35m / week	Vaughn Linda	SNJOSE	18.0	
1079		24h 15m / week (05/02-05/04)	Vaughn Linda	SNJOSE	0.5	<b>LETP 233.2 BASIC S.W.A.T. - 80 HOURS</b>						0545		38h 0m / week	Vaughn Linda	SNJOSE	15.0	
<b>LETP 223 DRIVER TRAINING INSTRUCTOR</b>						0827		39h 50m / week (01/24-01/28)	Vaughn Linda	SNJOSE	2.0	0552		41h 25m / week	Vaughn Linda	SNJOSE	16.0	
1043		39h 40m / week (03/14-03/18)	Vaughn Linda	SNJOSE	1.0	<b>LETP 233.7 DEFENSIVE TACTICS INSTRUCTOR</b>						<b>LETP 248 SURVEILLANCE TECHNIQUES</b>						
1116		39h 40m / week (01/31-02/04)	Vaughn Linda	SNJOSE	1.0	0030		40h 0m / week (01/03-01/14)	Vaughn Linda	SNJOSE	2.0	1108		36h 5m / week (02/28-03/04)	Vaughn Linda	SNJOSE	1.0	
<b>LETP 224 DRIVER AWARENESS INSTRUCTOR</b>						<b>LETP233.10 TACTICAL OPERATION DISPATCHER</b>						<b>LETP 249 PUBLIC SAFETY DISPATCH ACADEMY</b>						
1045		32h 45m / week (03/09-03/11)	Vaughn Linda	SNJOSE	0.5	1100		39h 40m / week (05/31-06/03)	Vaughn Linda	SNJOSE	1.0	1109		40h 10m / week (03/28-04/15)	Vaughn Linda	SNJOSE	3.5	
<b>LETP 230 ADVANCED OFFICER COURSE</b>						<b>LETP 234 ADVANCED OFFICER SKILLS I</b>						<b>LETP 250 ARREST AND CONTROL/DRIVING (PSP)</b>						
0574		MTWThF 8:00am-4:50pm (04/06-04/22)	Vaughn Linda	SNJOSE	1.5	0378		24h 0m / week (03/01-03/03)	Vaughn Linda	SNJOSE	0.5	1110		23h 15m / week (03/28-03/31)	Vaughn Linda	SNJOSE	0.5	
0673		25h 25m / week (11/30-01/21)	Vaughn Linda	SNJOSE	3.0	0482		WTh 8:00am-4:05pm (02/16-02/17)	Vaughn Linda	SNJOSE	0.5	<b>LETP 254 DISPATCH FIELD TRAINING PROGRAM</b>						
<b>LETP230.11 S.W.A.T.</b>						0527		28h 0m / week (04/13-04/15)	Vaughn Linda	SNJOSE	0.5	0486		40h 15m / week	Vaughn Linda	SNJOSE	13.5	
1096		40h 5m / week (04/04-04/15)	Vaughn Linda	SNJOSE	2.0							0705		35h 40m / week	Vaughn Linda	SNJOSE	13.0	



**LETP 255 PUBLIC SAFETY DISPATCH**

0687	17h 15m / week (11/09-12/28)	Vaughn Linda	SNJOSE	3.0
0861	40h 15m / week (04/11-04/29)	Vaughn Linda	SNJOSE	3.0
1111	40h 15m / week (03/28-04/15)	Vaughn Linda	SNJOSE	3.0

**LETP 265 DIGNITARY ESCORT**

1112	40h 10m / week (05/02-05/06)	Vaughn Linda	SNJOSE	1.0
------	---------------------------------	--------------	--------	-----

**LETP 280.1 SUPERVISOR COURSE**

0421	MTWThF 8:00am-4:50pm (02/15-02/25)	Vaughn Linda	SNJOSE	2.0
0424	MTWThF 8:00am-4:50pm (03/21-04/01)	Vaughn Linda	SNJOSE	2.0
0838	40h 0m / week (04/25-05/06)	Vaughn Linda	SNJOSE	2.0
0856	40h 0m / week (04/25-05/06)	Vaughn Linda	SNJOSE	2.0
0857	40h 0m / week (03/21-04/01)	Vaughn Linda	SNJOSE	2.0
0859	40h 0m / week (04/04-04/15)	Vaughn Linda	SNJOSE	2.0

1121	39h 50m / week (01/24-02/04)	Vaughn Linda	SNJOSE	2.0
------	---------------------------------	--------------	--------	-----

**LETP 280.2 FIELD TRAINING OFFICER**

0828	40h 0m / week (01/31-02/04)	Vaughn Linda	SNJOSE	1.0
0839	40h 0m / week (12/27-12/31)	Vaughn Linda	SNJOSE	1.0
0840	40h 0m / week (02/28-03/04)	Vaughn Linda	SNJOSE	1.0
0863	40h 0m / week (04/04-04/08)	Vaughn Linda	SNJOSE	1.0

**LETP 280.3 FIELD TRAINING OFFICER UPDATE**

1113	24h 10m / week (05/02-05/04)	Vaughn Linda	SNJOSE	0.5
------	---------------------------------	--------------	--------	-----

**LETP 290 INSTRUCTOR DEVELOPMENT**

0031	41h 35m / week (05/16-05/20)	Vaughn Linda	SNJOSE	1.0
0422	41h 35m / week (03/07-03/11)	Vaughn Linda	SNJOSE	1.0
0442	20h 45m / week (04/11-04/15)	Vaughn Linda	SNJOSE	0.5
0523	41h 35m / week (03/14-03/18)	Vaughn Linda	SNJOSE	1.0

0533	41h 35m / week (05/02-05/06)	Vaughn Linda	SNJOSE	1.0
5212	41h 35m / week (05/02-05/06)	Vaughn Linda	SNJOSE	1.0

**Learning Skills**

**LNSK 320 INTRODUCTORY COMPUTER SKILLS LAB**

4701	MW 9:30am-10:45am	Copeland A	HSS101	1.0
------	-------------------	------------	--------	-----

**LNSK 325 ASSISTIVE TECHNOLOGY APPLICATIONS**

4702	3h 50m / week (02/21-05/27)	Copeland A	Online	1.0
------	--------------------------------	------------	--------	-----

**LNSK 330 LEARNING STYLES EXPLORATION**

4704	0h 25m / week	Lewis V	STS115	0.5
------	---------------	---------	--------	-----

**LNSK 331A LEARNING STRATEGIES LAB**

0607	TTh 11:00am-12:15pm	Copeland A	HSS101	1.0
------	---------------------	------------	--------	-----

**LNSK 331B READING SKILLS DEVELOPMENT LAB**

4705	TTh 9:30am-10:45am	Rozman	HSS102	1.0
------	--------------------	--------	--------	-----

**LNSK 331C WRITING STRATEGIES LAB**

4708	TTh 11:00am-12:15pm	Rozman	HSS102	1.0
------	---------------------	--------	--------	-----

SECTION	DAYS	TIME	INSTRUCTOR	ROOM	UNITS	SECTION	DAYS	TIME	INSTRUCTOR	ROOM	UNITS	SECTION	DAYS	TIME	INSTRUCTOR	ROOM	UNITS
---------	------	------	------------	------	-------	---------	------	------	------------	------	-------	---------	------	------	------------	------	-------



**The Access Resource Center (ARC)** offers academic counseling, specialized instruction and classroom accommodations to students with a verified disability.

- Academic & Testing Accommodations
- Learning Skills Classes (LNSK)
- Counseling
- High Tech Center (HTC)

Contact [arcinfo@mpc.edu](mailto:arcinfo@mpc.edu) or call (831) 646-4070 • [www.mpc.edu/arc](http://www.mpc.edu/arc)

#### LNSK 331G AUDITORY PROCESSING STRATEGIES LAB

0651 MTWTh 2:30pm-3:45pm Rozman HSS102 2.0

#### LNSK 332 READING SKILLS DEVELOPMENT

4713 MW 9:30am-10:20am Rozman HSS102 2.0

#### LNSK 333 WRITING SKILLS DEVELOPMENT

4714 MW 11:00am-11:50am Rozman HSS102 2.0

#### LNSK 341A BEGINNING READING STRATEGIES LAB

0672 TTh 12:30pm-2:20pm Rozman HSS102 1.0  
(02/22-05/26)

#### LNSK 341B INTERMEDIATE READING STRATEGIES LAB

0675 TTh 12:30pm-2:20pm Rozman HSS102 1.0  
(02/22-05/26)

#### LNSK 342A BEGINNING WRITING STRATEGIES LAB

0680 MW 12:30pm-1:45pm Rozman HSS102 1.0

#### LNSK 342B INTERMEDIATE WRITING STRATEGIES LAB

0684 MW 12:30pm-1:45pm Rozman HSS102 1.0

#### LNSK 343A BEGINNING MATH STRATEGIES LAB

0348 MW 8:00am-9:15am Copeland A HSS101 1.0

1001 MW 11:00am-12:15pm Copeland A HSS101 1.0

#### LNSK 343B INTERMEDIATE MATH STRATEGIES LAB

0351 MW 8:00am-9:15am Copeland A HSS101 1.0

0900 MW 11:00am-12:15pm Copeland A HSS101 1.0

#### LNSK 347A BEGINNING ASSISTIVE TECHNOLOGY PROJECTS

4703 3h 0m / week Copeland A Online 1.0

#### LNSK 410 JOB READINESS

0415 30h 0m / week Phillips SA HOPE 0.0  
(01/03-01/20)

4717 20h 0m / week Phillips SA HOPE 0.0

4718 30h 0m / week Jaros R NBI 0.0  
(01/03-01/20)

4719 20h 0m / week Jaros R NBI 0.0

### Library Services

#### LIBR 50 INTRODUCTION TO LIBRARY AND RESEARCH SKILLS

0014 3h 0m / week Easton Online 1.0

0016 3h 0m / week Easton Online 1.0

0017 3h 0m / week Tozier G Online 1.0

0419 3h 0m / week Thomas E Online 1.0

0465 3h 0m / week Duong Online 1.0

0818 3h 0m / week Duong Online 1.0

0902 6h 20m / week Tozier G Online 1.0  
(03/28-05/20)

### Linguistics

#### LING 10 FOUNDATIONS OF LANGUAGE

0411 4h 0m / week Abend Online 3.0

#### LING 15 INTRODUCTION TO LINGUISTICS

0364 3h 0m / week Abend Online 3.0

4012 3h 0m / week Abend Online 3.0

#### LING 25 INTRODUCTION TO LANGUAGE AND GENDER

4013 3h 0m / week Abend Online 3.0

#### LING 35 INTRODUCTION TO NONVERBAL COMMUNICATION

0444 3h 0m / week Abend Online 3.0

#### LING 45 INTRODUCTION TO LANGUAGE AND SOCIETY

0145 6h 20m / week Abend Online 3.0  
(03/28-05/20)

#### LING 46 INTRODUCTION TO THE PSYCHOLOGY OF LANGUAGE

0937 3h 0m / week Abend Online 3.0

### Mathematics

#### MATH 10 MATHEMATICS FOR GENERAL EDUCATION

0172 MTWTh 10:00am-10:50am Little W PS104 4.0

0852 TTh 6:00pm-7:50pm Philley G PS102 4.0

4636 4h 0m / week Bishop E Online 4.0

#### MATH 12 NUMBER SYSTEMS

0912 TTh 11:00am-12:50pm Washburn BMC106 4.0

#### MATH 13 PRE-CALCULUS

0018 MW 1:00pm-3:15pm Bishop E PS102 5.0

0397 5h 0m / week Catania Online 5.0

0404 MW 11:00am-12:50pm Catania PS102 5.0  
& 2h 10m / week Catania Online

(02/14-05/25)

5120 TTh 1:00pm-3:15pm Washburn PS104 5.0

#### MATH 16 ELEMENTARY STATISTICS

0026 TTh 11:00am-12:50pm Hebert C PS201 4.0

0323 MW 1:00pm-2:50pm Iwamoto L BMC104 4.0

0325 TTh 1:00pm-2:50pm Iwamoto L BMC104 4.0

0331 TTh 1:00pm-2:50pm Millan S PS201 4.0

0446 4h 0m / week Pickering Online 4.0

0458 MW 6:00pm-7:50pm Lake E PS201 4.0

0459 4h 0m / week Pickering Online 4.0

0595 MT 7:45am-8:35am Hatch D CHS 4.0

& W 7:45am-9:20am Hatch D CHS

(01/12-05/25)

0596 MT 8:40am-9:30am Hatch D CHS 4.0

& Th 8:30am-10:05am Hatch D CHS

(01/13-05/25)

0628 MW 1:00pm-2:50pm Cristobal PS201 4.0

SECTION	DAYS	TIME	INSTRUCTOR	ROOM	UNITS	SECTION	DAYS	TIME	INSTRUCTOR	ROOM	UNITS	SECTION	DAYS	TIME	INSTRUCTOR	ROOM	UNITS
0678		4h 0m / week	Lopez D	Online	4.0												
0866		5h 15m / week (02/21-05/27)	Cristobal	Online	4.0												
0877	MW	9:00am-10:50am	Cristobal	PS102	4.0												
4645	MW	9:00am-10:50am	Hsu J.	PS201	4.0												
4646	TTh	9:00am-10:50am	Bartow	PS201	4.0												
<b>MATH 17</b>		<b>FINITE MATHEMATICS</b>															
4649	MW	3:00pm-4:50pm	Hsu J.	BMC106	4.0												
<b>MATH 18</b>		<b>CALCULUS AND ANALYTIC GEOMETRY FOR BIOLOGY/SOC SCI/BUSINESS</b>															
0868		4h 0m / week	Washburn	Online	4.0												
<b>MATH 20A</b>		<b>CALCULUS WITH ANALYTIC GEOMETRY I</b>															
0185	MW	1:00pm-3:15pm	Millan S	PS104	4.0												
0308	MWF	8:00am-8:50am & 2h 0m / week	Hebert C Hebert C	PS201 Online	4.0												
0341	W	11:00am-12:50pm & 4h 30m / week (02/14-05/20)	Washburn Washburn	BMC106 Online	4.0												
0597	TF	8:00am-9:35am & W 8:00am-9:10am	Lopez D Lopez D	SHS SHS	4.0												
0599	TF	9:50am-11:25am & W 9:30am-10:40am	Lopez D Lopez D	SHS SHS	4.0												
0600	TF	9:50am-11:25am & W 9:30am-10:40am	Millan S Millan S	MRNHS MRNHS	4.0												
<b>MATH 20B</b>		<b>CALCULUS WITH ANALYTIC GEOMETRY II</b>															
0044	MTWThF	11:00am-11:50am	Iwamoto L	BMC104	4.0												
4653	MTWThF	9:00am-9:50am	Catania	PS104	4.0												
<b>MATH 20C</b>		<b>CALCULUS OF SEVERAL VARIABLES</b>															
4654	MTWThF	8:00am-8:50am	Pickering	PS102	4.0												
<b>MATH 31</b>		<b>LINEAR ALGEBRA</b>															
0449	MTWTh	12:00pm-12:50pm	Hsu J.	PS104	4.0												
<b>MATH 32</b>		<b>DIFFERENTIAL EQUATIONS</b>															
4655	TTh	9:00am-10:50am	Cristobal	PS102	4.0												
<b>MATH 40</b>		<b>DISCRETE MATHEMATICS</b>															
4656	W	9:00am-9:50am & 3h 0m / week	Spence L Spence L	BMC104 Online	3.0												
<b>MATH 260</b>		<b>PRE-STATISTICS</b>															
0060	MW	10:30am-12:45pm	Hebert C	BMC105	5.0												
<b>MATH 261</b>		<b>BEGINNING ALGEBRA</b>															
4663	MW	8:30am-10:45am	Nguyen T	BMC106	5.0												
<b>MATH 263</b>		<b>INTERMEDIATE ALGEBRA AND COORDINATE GEOMETRY</b>															
0183	TTh	8:30am-10:45am	Nguyen T	BMC106	5.0												
4672		5h 0m / week	Nguyen T	Online	5.0												
4678		6h 30m / week (02/14-05/20)	Bishop E	Online	5.0												
<b>MATH 313</b>		<b>SUPPORT FOR PRE-CALCULUS</b>															
0387	TTh	1:00pm-1:50pm	Bishop E	PS102	2.0												
<b>MATH 316</b>		<b>SUPPORT FOR ELEMENTARY STATISTICS</b>															
0460	F	11:00am-12:50pm	Hebert C	PS201	2.0												
0479	F	9:00am-10:50am	Hsu J.	PS201	2.0												
<b>MATH 440</b>		<b>SUPERVISED TUTORING: MATHEMATICS</b>															
4691		18h 0m / week	Lake E	BMC103	0.0												

## Medical Assisting

### MEDA 100 INTRODUCTION TO HEALTH CAREERS

4692		1h 45m / week (03/28-05/27)	Gensel G	Online	1.0
4693		1h 45m / week (01/24-03/30)	Gensel G	Online	1.0

### MEDA 101 ETHICS, LAW AND IT SECURITY IN THE MEDICAL OFFICE

0008		3h 0m / week & 3h 0m / week	Gensel G Singh D	Online Online	3.0
------	--	--------------------------------	---------------------	------------------	-----

### MEDA 105 MEDICAL TERMINOLOGY

0009	MW	12:30pm-2:20pm	Gensel G	Online	4.0
0682		4h 0m / week	Bell M	Online	4.0

### MEDA 110 MEDICAL OFFICE MANAGEMENT

0950	TTh	1:30pm-3:45pm	Gensel G	Online	3.0
------	-----	---------------	----------	--------	-----

### MEDA 112 MEDICAL OFFICE COMPUTER APPLICATIONS

0032		4h 0m / week	Bell M	Online	2.0
------	--	--------------	--------	--------	-----

### MEDA 113 MEDICAL PROCEDURE CODING

0908		5h 0m / week	Carlson S	Online	3.0
------	--	--------------	-----------	--------	-----

### MEDA 114 MEDICAL INSURANCE MANAGEMENT

0034		3h 0m / week	Bell M	Online	2.0
------	--	--------------	--------	--------	-----

### MEDA 116 MEDICAL DOCUMENTATION AND TRANSCRIPTION

0924		4h 0m / week	Gensel G	Online	2.0
------	--	--------------	----------	--------	-----

### MEDA 117 ICD 10 CODING

0508		5h 0m / week	Carlson S	Online	3.0
------	--	--------------	-----------	--------	-----

### MEDA 118 PHARMACOLOGY AND HUMAN DISEASES

4698		3h 0m / week	Bell M	Online	3.0
------	--	--------------	--------	--------	-----

### MEDA 120 MEDICAL ASSISTING CLINICAL TECHNIQUES I

*Sections below offered at the MPC Education Center in Marina:*

0036	T	10:30am-12:45pm	Bell M	Online	3.0
	& T	1:30pm-3:45pm	Bell M	MT2	
0935	T	10:30am-12:45pm	Bell M	Online	3.0
	& T	1:30pm-3:45pm	Bell M	MT3	

LAUNCH YOUR  
**Health Career**  
at MPC



MPC dental & medical assisting graduates are *in demand* with local employers!

**MPC offers a variety of programs for essential healthcare workers**

- Community Health Worker
- Dental Assisting
- Medical Assisting
- Medical Insurance and Coding
- Medical Office Administration

*Instruction combines online and in-person instruction.*

Get started your new career in a growing industry by enrolling for classes at MPC!

Visit [www.mpc.edu](http://www.mpc.edu) to learn more!

SECTION	DAYS	TIME	INSTRUCTOR	ROOM	UNITS	SECTION	DAYS	TIME	INSTRUCTOR	ROOM	UNITS	SECTION	DAYS	TIME	INSTRUCTOR	ROOM	UNITS
---------	------	------	------------	------	-------	---------	------	------	------------	------	-------	---------	------	------	------------	------	-------


**MEDA 121 MEDICAL ASSISTING CLINICAL TECHNIQUES II**
*Sections below offered at the MPC Education Center in Marina:*

1006	M	10:30am-12:45pm	Bell M	Online	3.0
	& M	1:30pm-3:45pm	Bell M	MT2	
4699	M	10:30am-12:45pm	Bell M	Online	3.0
	& M	1:30pm-3:45pm	Bell M	MT3	

**MEDA 122 MEDICAL ASSISTING CLINICAL TECHNIQUES III**
*Sections below offered at the MPC Education Center in Marina:*

0037	W	10:30am-12:45pm	Bell M	MT2	3.0
	& W	1:30pm-3:45pm	Bell M	MT2	
1007	W	10:30am-12:45pm	Bell M	Online	3.0
	& W	1:30pm-3:45pm	Bell M	MT3	

**MEDA 130 MEDICAL ASSISTING EXTERNSHIP**

0991	9h 25m / week	Bell M	OFFICE	3.0
4700	22h 25m / week (03/28-05/20)	Bell M	OFFICE	3.0

**MEDA 251 COMMUNITY HEALTH WORKER LEVEL 1**

0540	F	10:30am-12:45pm	Bell M	Online	3.0
	&	8h 10m / week	Bell M	Online	
		(04/01-05/20)			

**Music**
**MUSI 1 MUSIC APPRECIATION**

0242	TTh	9:30am-10:45am	Durst A	MU101	3.0
4721	3h 0m / week	Durst A	Online	3.0	

**MUSI 2 INTRODUCTION TO BROADWAY MUSICALS**

0587	TTh	12:30pm-1:45pm	Durst A	MU101	3.0
------	-----	----------------	---------	-------	-----

**MUSI 3 INTRODUCTION TO AMERICAN MUSIC**

0525	MW	2:00pm-3:15pm	Durst A	MU101	3.0
------	----	---------------	---------	-------	-----

**MUSI 10A MUSIC THEORY AND MUSICIANSHIP I**

4722	MW	8:00am-10:15am	Durst A	MU102	4.0
------	----	----------------	---------	-------	-----

**MUSI 10B MUSIC THEORY AND MUSICIANSHIP II**

1063	MW	10:30am-12:45pm	Durst A	MU102	4.0
------	----	-----------------	---------	-------	-----

**MUSI 10C MUSIC THEORY AND MUSICIANSHIP III**

0315	MW	10:30am-12:45pm	Durst A	MU102	4.0
------	----	-----------------	---------	-------	-----

**MUSI 22 JAZZ CHORAL ENSEMBLE**

0248	W	7:00pm-8:50pm	Klevan	MU119	1.0
------	---	---------------	--------	-------	-----

**MUSI 25 APPLIED MUSIC**

0340	M	3:00pm-4:05pm	Durst A	MU102	0.5
	&	1h 10m / week	Durst A	TBD	
		(02/07-05/27)			

**MUSI 30 CONCERT BAND**

0224	Th	7:00pm-9:50pm	Aguilar R	MU101	1.0
------	----	---------------	-----------	-------	-----

**MUSI 32 JAZZ ENSEMBLE**

0225	T	7:00pm-9:50pm	Durst A	MU101	1.0
------	---	---------------	---------	-------	-----

**MUSI 35 STRING ORCHESTRA**

0226	M	7:00pm-9:50pm	Dally	MU101	1.0
------	---	---------------	-------	-------	-----

**MUSI 40 VOICE FUNDAMENTALS I**

4731	TTh	2:00pm-2:50pm	Edison K	MU119	1.0
------	-----	---------------	----------	-------	-----

**MUSI 41 VOICE FUNDAMENTALS II**

1064	TTh	3:00pm-3:50pm	Edison K	MU119	1.0
------	-----	---------------	----------	-------	-----

**MUSI 48A GUITAR I**

5132	T	6:00pm-8:50pm	Collins P	MU119	1.0
------	---	---------------	-----------	-------	-----

**MUSI 48B GUITAR II**

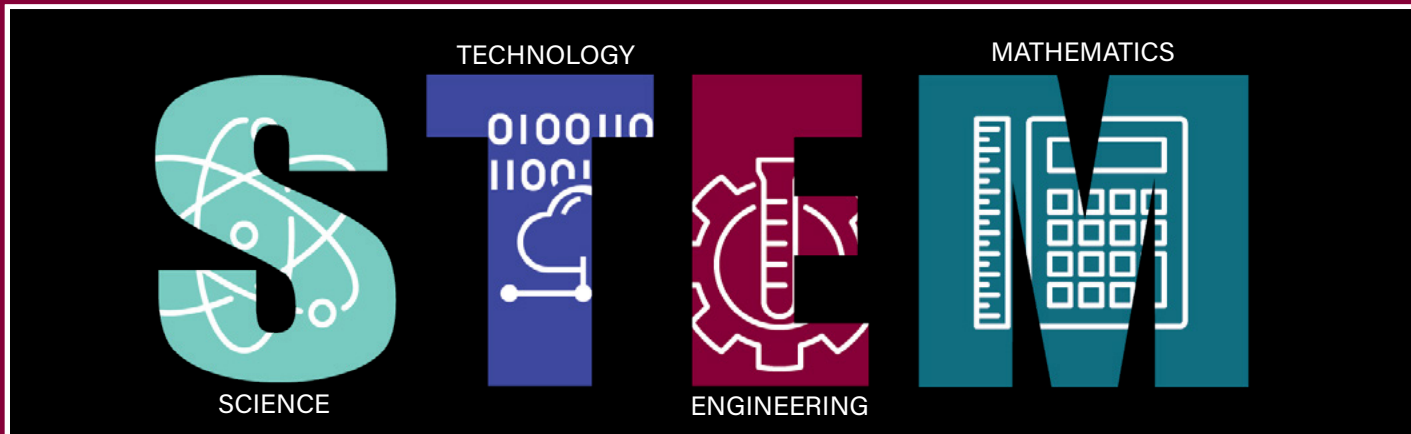
5133	T	6:00pm-8:50pm	Collins P	MU119	1.0
------	---	---------------	-----------	-------	-----

**MUSI 50A PIANO I**

0589	TTh	11:00am-11:50am	Staff	MU115	1.0
------	-----	-----------------	-------	-------	-----



SECTION	DAYS	TIME	INSTRUCTOR	ROOM	UNITS	SECTION	DAYS	TIME	INSTRUCTOR	ROOM	UNITS	SECTION	DAYS	TIME	INSTRUCTOR	ROOM	UNITS												
<b>MUSI 50B PIANO II</b>																													
0236	TTh	11:00am-11:50am	Staff	MU115	1.0	<b>NURS 100 PHARMACOLOGY FOR NURSING</b>																							
						1141	F	9:00am-11:50am	Trapl C	Online	2.0	<b>Nutrition And Food</b>																	
						4741	F	9:00am-11:50am	Trapl C	Online	2.0	<b>NUTF 1 NUTRITION</b>																	
<b>MUSI 50C PIANO III</b>																													
0241	TTh	11:00am-11:50am	Staff	MU115	1.0	<b>0543 6h 20m / week Lord V Online 3.0 (03/28-05/20)</b>																							
<b>MUSI 50D PIANO IV</b>																													
0244	TTh	11:00am-11:50am	Staff	MU115	1.0	<b>4526 3h 0m / week Lord V Online 3.0</b>																							
<b>MUSI 495 SPECIAL TOPICS IN MUSIC</b>																													
0228	T	12:30pm-1:20pm	Staff	MU119	0.0	<i>Sections below offered at the MPC Education Center in Marina:</i>																							
&		1h 0m / week	Staff	MU119		<b>0115 TTh 9:30am-10:45am Lord V MA104 3.0</b>																							
0229	Th	7:00pm-7:50pm	Aguilar R	MU119	0.0	<b>NUTF 2 INTRODUCTION TO CAREERS IN NUTRITION, DIETETICS, AND FOOD</b>																							
&		1h 0m / week	Aguilar R	MU119		<b>0466 1h 0m / week Lord V Online 1.0</b>																							
0232	T	7:00pm-7:50pm	Durst A	MU101	0.0	<b>NUTF 3 NUTRITION ISSUES AND CONTROVERSIES</b>																							
&		1h 0m / week	Durst A	MU119		<b>0575 2h 0m / week Lord V Online 2.0</b>																							
0233	M	7:00pm-7:50pm	Dally	MU101	0.0	<b>NUTF 10 FOOD SCIENCE</b>																							
&		1h 0m / week	Dally	MU101		<b>0970 2h 0m / week Lord V Online 2.0</b>																							
0359	TTh	2:00pm-2:50pm	Edison K	Online	0.0	<b>NUTF 10L FOOD SCIENCE AND SAFETY LABORATORY</b>																							
0360	T	6:00pm-7:50pm	Collins P	MU119	0.0	<b>0971 Th 4:00pm-6:50pm Lord V FC104 1.0</b>																							
<b>Nursing</b>																													
<b>NURS 52B NURSING II</b>																													
4739	MT	9:00am-10:50am	Kragelund	IC201	8.5	<b>NUTF 45 FOOD SERVICE II: FACILITY AND HUMAN RESOURCE MANAGEMENT</b>																							
&		13h 25m / week	Kragelund	NU105		<b>0282 3h 0m / week Lord V Online 3.0</b>																							
<b>NURS 52D NURSING IV</b>																													
4740	MT	9:00am-11:15am	Miranda M	IC204	9.5																								
&		13h 25m / week	Miranda M	NU105																									



**STEM PROVIDES A SOLID FOUNDATION FOR TRANSFER & REWARDING CAREERS!**

- |                            |                             |                |
|----------------------------|-----------------------------|----------------|
| Data Scientist             | Doctor                      | Epidemiologist |
| Software Developer         | Database Administrator      | Civil Engineer |
| Mechanical Engineer        | Biomedical Engineer         | Biochemist     |
| Cartographer               | Environmental Engineer      | IT Manager     |
| Applied Mathematician      | Forensic Science Technician | Actuary        |
| Computer Network Architect | Geoscientist                | Statistician   |

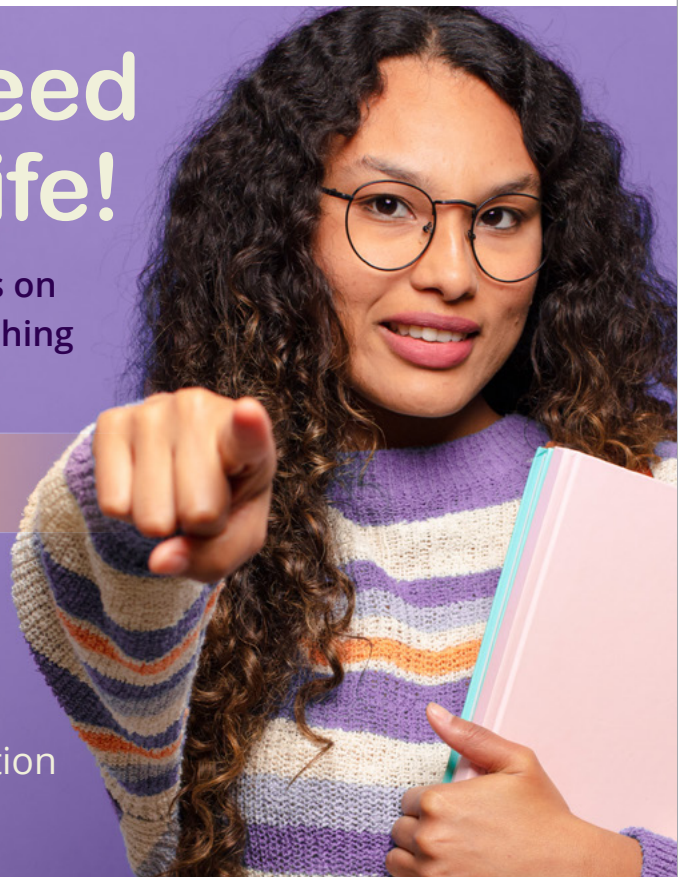
SECTION	DAYS	TIME	INSTRUCTOR	ROOM	UNITS	SECTION	DAYS	TIME	INSTRUCTOR	ROOM	UNITS	SECTION	DAYS	TIME	INSTRUCTOR	ROOM	UNITS
<b>Oceanography</b>						<b>Personal Development</b>						<b>PHIL 4 MORAL ISSUES</b>					
<b>OCEN 2 INTRODUCTORY OCEANOGRAPHY</b>						<b>PERS 10 COLLEGE SUCCESS</b>						0015 17h 0m / week Provost Online 3.0 (01/03-01/20)					
4754		3h 0m / week	Hochstaedter	Online	3.0	0571		2h 10m / week	De Soto A	Online	1.0	0981	MW	11:00am-12:15pm	Weber T	HU106	3.0
5137		3h 0m / week	Hochstaedter	Online	3.0			(01/24-03/18)				4766	TTh	11:00am-12:15pm	Weber T	HU106	3.0
<b>OCEN 2L INTRODUCTORY OCEANOGRAPHY LAB</b>						<b>PERS 50 MAKING COLLEGE COUNT</b>						<b>PHIL 6 INTRODUCTION TO LOGIC</b>					
4755	W	11:00am-1:50pm	Hochstaedter	PS106	1.0	0909		6h 20m / week	De Soto A	Online	3.0	0245 TTh 1:00pm-2:15pm Weber T HU106 3.0					
4756	W	8:00am-10:50am	Hochstaedter	PS106	1.0			(03/28-05/20)				<b>PHIL 8 INTRODUCTION TO WORLD RELIGIONS</b>					
<b>Older Adult Program</b>						<b>PERS 51 CAREER AND LIFE PLANNING</b>						0490 3h 0m / week Provost Online 3.0					
<b>ART 431 DRAWING AND COMPOSITION</b>						0615 F 9:00am-11:50am Stratton J Online 3.0						<b>PHIL 10 INTRODUCTION TO CRITICAL THINKING</b>					
4955		5h 35m / week	Bispo	Online	0.0			(02/07-04/23)				0478 17h 0m / week Provost Online 3.0 (01/03-01/20)					
<b>HORT 425 SUCCESSFUL GARDENING TECHNIQUES</b>						<b>PHIL 71 CAREER ASSESSMENT AND EXPLORATION</b>						<b>PHIL 13 INTRODUCTION TO EASTERN PHILOSOPHY</b>					
4961	T	10:00am-10:50am	Hofmann J	Online	0.0	0910		1h 35m / week	Gonzalez E	Online	1.0	0019 3h 0m / week Provost Online 3.0					
	& F	10:00am-10:50am	Hofmann J	LS104				(02/22-04/29)				<b>PHIL 40 INTRODUCTION TO FEMINIST THEORY</b>					
	&	1h 25m / week	Hofmann J	Online								4774 3h 0m / week Davis D Online 3.0					
		(02/22-04/29)															
<b>Philosophy</b>						<b>PHIL 2 INTRODUCTION TO PHILOSOPHY</b>											
						0447		17h 0m / week	Provost	Online	3.0						
								(01/03-01/20)									
						1072	MW	9:30am-10:45am	Weber T	HU106	3.0						
						4765	TTh	9:30am-10:45am	Weber T	HU106	3.0						

# YOU CAN Succeed in College & in Life!

Personal Development (PERS) courses focus on topics designed to assist students with reaching their educational and/or career goals.

## CHECK OUT OUR SPRING COURSES!

- PERS 10 - Orientation to College
- PERS 50 - Making College Count
- PERS 51 - Career & Life Planning
- PERS 59 - Career Assessment & Exploration
- PERS 71 - Foundations of Career Choice



SECTION	DAYS	TIME	INSTRUCTOR	ROOM	UNITS	SECTION	DAYS	TIME	INSTRUCTOR	ROOM	UNITS	SECTION	DAYS	TIME	INSTRUCTOR	ROOM	UNITS
---------	------	------	------------	------	-------	---------	------	------	------------	------	-------	---------	------	------	------------	------	-------



- Priority Registration
- Grants
- Tutoring
- Lending Library

# EOPS

EXTENDED OPPORTUNITY PROGRAMS & SERVICES

- Book Voucher
- Calculators
- Laptop
- Counseling

For more information or to enroll, call (831) 646-4247 or email [eopsemail@mpc.edu](mailto:eopsemail@mpc.edu)

## Physical Education

### PHED 2A GOLF I

0003 T 9:30am-12:20pm Russo J PE201 1.0

### PHED 2B GOLF II

0402 Th 9:30am-12:20pm Russo J PE201 1.0

### PHED 2C GOLF III

0405 Th 9:30am-12:20pm Russo J PE201 1.0

### PHED 2D GOLF IV

0406 Th 9:30am-12:20pm Russo J PE201 1.0

### PHED 5A TENNIS I

0643 TTh 11:00am-12:15pm Tran T CTS 1.0

### PHED 5B TENNIS II

0644 TTh 11:00am-12:15pm Tran T CTS 1.0

### PHED 5D TENNIS III

0784 TTh 11:00am-12:15pm Tran T CTS 1.0

### PHED 5E TENNIS IV

0786 TTh 11:00am-12:15pm Tran T CTS 1.0

### PHED 6A SOCCER I

0408 MW 6:00pm-7:15pm Cisneros M FFIELD 0.5

### PHED 6B SOCCER II

0416 MW 6:00pm-7:15pm Cisneros M FFIELD 1.0

### PHED 6C SOCCER III

0417 MW 6:00pm-7:15pm Cisneros M FFIELD 1.0

### PHED 7A SWIMMING I

4787 MTWTh 9:30am-10:20am Osgood S POOL 1.0  
& MTWTh 9:30am-10:20am Smith A POOL

### PHED 7B SWIMMING II

4788 MTWTh 9:30am-10:20am Osgood S POOL 1.0  
& MTWTh 9:30am-10:20am Smith A POOL

### PHED 9A PICKLEBALL I

0339 TTh 9:30am-10:45am Tran T CTS 1.0

### PHED 9B PICKLEBALL II

0346 TTh 9:30am-10:45am Tran T CTS 1.0

### PHED 9C PICKLEBALL III

0164 TTh 9:30am-10:45am Tran T CTS 1.0

### PHED 9D PICKLEBALL IV

0426 TTh 9:30am-10:45am Tran T CTS 1.0

### PHED 12B COMPETITIVE SWIMMING I

4789 MTWTh 12:30pm-1:20pm Osgood S POOL 1.0  
& MTWTh 12:30pm-1:20pm Smith A POOL

### PHED 12C COMPETITIVE SWIMMING II

0646 MTWTh 12:30pm-1:20pm Osgood S POOL 1.0  
& MTWTh 12:30pm-1:20pm Smith A POOL

### PHED 12D COMPETITIVE SWIMMING III

0808 MTWTh 12:30pm-1:20pm Osgood S POOL 1.0  
& MTWTh 12:30pm-1:20pm Smith A POOL

### PHED 12E COMPETITIVE SWIMMING IV

0811 MTWTh 12:30pm-1:20pm Osgood S POOL 1.0  
& MTWTh 12:30pm-1:20pm Smith A POOL

### PHED 15A VOLLEYBALL I

0647 TTh 4:30pm-6:20pm Moore K PE201 1.0

### PHED 15B VOLLEYBALL II

5151 TTh 4:30pm-6:20pm Moore K PE201 1.0

### PHED 15D VOLLEYBALL III

0736 TTh 4:30pm-6:20pm Moore K PE201 1.0

### PHED 15E VOLLEYBALL IV

0737 TTh 4:30pm-6:20pm Moore K PE201 1.0

### PHED 22A INTRODUCTION TO BASKETBALL

0343 TTh 11:00am-12:15pm Spiering PE201 1.0

### PHED 22B INTERMEDIATE BASKETBALL

0352 TTh 11:00am-12:15pm Spiering PE201 1.0

SECTION	DAYS	TIME	INSTRUCTOR	ROOM	UNITS	SECTION	DAYS	TIME	INSTRUCTOR	ROOM	UNITS	SECTION	DAYS	TIME	INSTRUCTOR	ROOM	UNITS
---------	------	------	------------	------	-------	---------	------	------	------------	------	-------	---------	------	------	------------	------	-------

# HEALTHY BODY HEALTHY MIND

fitness programs  
for everyone!

- Athletic Conditioning & Training
- Modern Dance, Ballet, Jazz, Ethnic Dance
- Golf, Basketball, Volleyball
- Fitness Training, Weight Training
- Tai Chi, Yoga, Aerobics



## PHED 22C INTERMEDIATE/ADVANCED BASKETBALL

0791 TTh 11:00am-12:15pm Spiering PE201 1.0

## PHED 22D ADVANCED BASKETBALL

0926 TTh 11:00am-12:15pm Spiering PE201 0.5

## PHED 23A MARTIAL ARTS/SELF-DEFENSE I

0428 TTh 11:00am-12:15pm McCann S DA101 1.0

## Physical Fitness

### PFIT 2 CORE FITNESS TRAINING

0394 3h 0m / week Moore K FTC206 1.0

### PFIT 6 CROSS-TRAINING

0401 3h 0m / week Villagrana M FTC206 1.0

### PFIT 7 DISTANCE TRAINING

0409 3h 0m / week Cunningham N FTC206 1.0

### PFIT 8 AEROBIC CONDITIONING

0410 3h 0m / week Phillips D FTC206 1.0

### PFIT 9 PERSONAL FITNESS

0412 3h 0m / week Spiering FTC206 1.0

### PFIT 10A BEGINNING WEIGHT TRAINING

0385 3h 0m / week Palmer R FTC117 1.0

### PFIT 10B INTERMEDIATE WEIGHT TRAINING

0389 3h 0m / week Palmer R FTC117 1.0

### PFIT 10C ADVANCED WEIGHT TRAINING

0393 3h 0m / week Palmer R FTC117 1.0

### PFIT 14 EXERCISE FOR HEALTH AND FITNESS

4817 8h 25m / week Villagrana M FTC206 0.5  
(01/03-01/20)

### PFIT 16A TAI CHI I

4820 TTh 9:30am-10:45am Scott-Behren DA101 1.0

### PFIT 16B TAI CHI II

0638 TTh 9:30am-10:45am Scott-Behren DA101 1.0

### PFIT 16C TAI CHI III

0669 TTh 9:30am-10:45am Scott-Behren DA101 1.0

### PFIT 16D TAI CHI IV

0670 TTh 9:30am-10:45am Scott-Behren DA101 1.0

### PFIT 17A YOGA I

4822 MWF 7:00am-7:50am Benavente DA103 1.0

4823 MWF 8:30am-9:20am Benavente Online 1.0

4824 3h 0m / week Staff Online 1.0

### PFIT 17B YOGA II

0200 3h 0m / week Staff Online 1.0

0210 MWF 7:00am-7:50am Benavente DA103 1.0

0211 MWF 8:30am-9:20am Benavente Online 1.0

### PFIT 17C YOGA III

0760 3h 0m / week Staff Online 1.0

0762 MWF 7:00am-7:50am Benavente DA103 1.0

0763 MWF 8:30am-9:20am Benavente Online 1.0

### PFIT 17D YOGA IV

0058 MWF 7:00am-7:50am Benavente Online 1.0

0063 MWF 8:30am-9:20am Benavente Online 1.0

0064 3h 0m / week Staff Online 1.0

### PFIT 18A AEROBIC FITNESS I

4825 MW 5:30pm-6:45pm Benavente Online 1.0

### PFIT 18B AEROBIC FITNESS II

0227 MW 5:30pm-6:45pm Benavente Online 1.0

### PFIT 18C AEROBIC FITNESS III

0765 MW 5:30pm-6:45pm Benavente Online 1.0

### PFIT 18D AEROBIC FITNESS IV

0067 MW 5:30pm-6:45pm Benavente Online 1.0

### PFIT 19A BODY SCULPTING I

4830 TTh 8:00am-9:15am Moldenhauer DA101 1.0

SECTION	DAYS	TIME	INSTRUCTOR	ROOM	UNITS	SECTION	DAYS	TIME	INSTRUCTOR	ROOM	UNITS	SECTION	DAYS	TIME	INSTRUCTOR	ROOM	UNITS
<b>PFIT 19B BODY SCULPTING II</b>						<b>PFIT 30B TRIATHLON TRAINING II</b>						<b>Political Science</b>					
0640	TTh	8:00am-9:15am	Moldenhauer	DA101	1.0	0642	TTh	8:30am-9:20am	Smith A	POOL	1.0	<b>POLS 1 INTRODUCTION TO AMERICAN GOVERNMENT AND POLITICS</b>					
							& W	5:30pm-7:20pm	Smith A	TRACK		0212	3h 0m / week		Blanchard L	Online	3.0
<b>PFIT 19C BODY SCULPTING III</b>						<b>PFIT 30C TRIATHLON TRAINING III</b>						4859 TTh 8:00am-9:15am Banks SS202 3.0					
0730	TTh	8:00am-9:15am	Moldenhauer	DA101	1.0	0461	TTh	8:30am-9:20am	Smith A	POOL	1.0	4860	TTh	9:30am-10:45am	Banks	SS202	3.0
							& W	5:30pm-7:20pm	Smith A	TRACK		4861	TTh	11:00am-12:15pm	Banks	SS202	3.0
<b>PFIT 19D BODY SCULPTING IV</b>						<b>PFIT 50 INDEPENDENT FITNESS AND TESTING PROGRAM</b>						4864 3h 0m / week Blanchard L Online 3.0					
0925	TTh	8:00am-9:15am	Moldenhauer	DA101	1.0	0398	3h 0m / week		Phillips D	Online	1.0	4865	3h 0m / week		Van Zwaluwen	Online	3.0
<b>PFIT 20 CIRCUIT TRAINING</b>												4866 6h 20m / week Van Zwaluwen Online 3.0 (03/28-05/20)					
0414	3h 0m / week		Peters D	FTC206	1.0							5163 3h 0m / week Serena D Online 3.0					
<b>PFIT 21A FLEXIBILITY AND RELAXATION TECHNIQUES I</b>												<b>POLS 2 INTRODUCTION TO COMPARATIVE GOVERNMENT AND POLITICS</b>					
4832	3h 0m / week		Benavente	Online	1.0							0756 3h 0m / week Blanchard L Online 3.0					
<b>PFIT 21B FLEXIBILITY AND RELAXATION TECHNIQUES II</b>												<b>POLS 3 INTRODUCTION TO POLITICAL THEORY AND THOUGHT</b>					
0234	3h 0m / week		Benavente	Online	1.0							0541 MW 11:00am-12:15pm Blanchard L SS101 3.0					
<b>PFIT 21C FLEXIBILITY AND RELAXATION TECHNIQUES III</b>												<b>POLS 18 LATINOS IN AMERICAN GOVERNMENT</b>					
0396	3h 0m / week		Benavente	Online	1.0							0488 3h 0m / week Cabrera K Online 3.0					
<b>PFIT 22A FITNESS THROUGH SWIMMING I</b>												<b>Psychology</b>					
0045	MTWTh	6:00am-6:50am	Osgood S	POOL	1.0							<b>PSYC 1 GENERAL PSYCHOLOGY</b>					
	& MTWTh	6:00am-6:50am	Smith A	POOL								0104 TTh 11:00am-12:15pm Austin T SS102 3.0					
4833	MTWTh	11:00am-11:50am	Osgood S	POOL	1.0							0105 TF 8:00am-9:20am Austin T SHS 3.0					
	& MTWTh	11:00am-11:50am	Smith A	POOL								0329 6h 20m / week Nicolaides C Online 3.0 (03/28-05/20)					
<b>PFIT 22B FITNESS THROUGH SWIMMING II</b>												0532 3h 0m / week Kotecki A Online 3.0					
0046	MTWTh	6:00am-6:50am	Osgood S	POOL	1.0							0654 3h 0m / week Kotecki A Online 3.0					
	& MTWTh	6:00am-6:50am	Smith A	POOL								4872 MW 12:30pm-1:45pm Lachman L SS202 3.0					
0641	MTWTh	11:00am-11:50am	Osgood S	POOL	1.0							4873 3h 0m / week Kotecki A Online 3.0					
	& MTWTh	11:00am-11:50am	Smith A	POOL								4874 MW 2:00pm-3:15pm Lachman L SS202 3.0					
<b>PFIT 22C FITNESS THROUGH SWIMMING III</b>												4876 6h 20m / week Nicolaides C Online 3.0 (01/24-03/18)					
0051	MTWTh	6:00am-6:50am	Osgood S	POOL	1.0							<b>PSYC 3 INTRODUCTION TO SOCIAL PSYCHOLOGY</b>					
	& MTWTh	6:00am-6:50am	Smith A	POOL								0345 3h 0m / week Whitworth R Online 3.0					
0086	MTWTh	11:00am-11:50am	Osgood S	POOL	1.0							0776 3h 0m / week Whitworth R Online 3.0					
	& MTWTh	11:00am-11:50am	Smith A	POOL								0832 TTh 12:30pm-1:45pm Austin T SS102 3.0					
<b>PFIT 22D FITNESS THROUGH SWIMMING IV</b>												<b>PSYC 6 PSYCHOLOGY OF WOMEN</b>					
0052	MTWTh	6:00am-6:50am	Osgood S	POOL	1.0							0885 3h 0m / week Luke J Online 3.0					
	& MTWTh	6:00am-6:50am	Smith A	POOL								<b>PSYC 10 INTRODUCTION TO RESEARCH METHODS IN PSYCHOLOGY</b>					
0087	MTWTh	11:00am-11:50am	Osgood S	POOL	1.0							0286 3h 0m / week Nicolaides C Online 3.0					
	& MTWTh	11:00am-11:50am	Smith A	POOL								0895 3h 0m / week Nicolaides C Online 3.0					
<b>PFIT 23A FUNCTIONAL FITNESS I</b>												<b>PSYC 19 INTRODUCTION TO STATISTICS FOR THE SOCIAL SCIENCES</b>					
0432	TTh	7:00am-8:15am	Moldenhauer	DA101	1.0							0220 4h 0m / week Nicolaides C Online 4.0					
<b>PFIT 23B FUNCTIONAL FITNESS II</b>																	
0433	TTh	7:00am-8:15am	Moldenhauer	DA101	1.0												
<b>PFIT 23C FUNCTIONAL FITNESS III</b>																	
0438	TTh	7:00am-8:15am	Moldenhauer	DA101	1.0												
<b>PFIT 23D FUNCTIONAL FITNESS IV</b>																	
0441	TTh	7:00am-8:15am	Moldenhauer	DA101	1.0												
<b>PFIT 30A TRIATHLON TRAINING I</b>																	
4836	TTh	8:30am-9:20am	Smith A	POOL	1.0												
	& W	5:30pm-7:20pm	Smith A	TRACK													
<b>Physics</b>						<b>PHYS 2B GENERAL PHYSICS II</b>											
						4851	MW	11:00am-12:50pm	Jewell L	PS207	4.0						
							& Th	9:00am-11:50am	Jewell L	PS103							
						<b>PHYS 3A SCIENCE AND ENGINEERING PHYSICS I</b>											
						4852	MWF	10:00am-10:50am	Jewell L	PS207	4.0						
							& T	10:00am-10:50am	Jewell L	PS207							
							& T	1:00pm-3:50pm	Jewell L	PS107							
						<b>PHYS 3B SCIENCE AND ENGINEERING PHYSICS II</b>											
						0069	MW	10:00am-11:50am	Wei	PS107	4.0						
							& M	2:00pm-4:50pm	Wei	PS107							
						<b>PHYS 3C SCIENCE AND ENGINEERING PHYSICS III</b>											
						4854	T	11:00am-12:50pm	Wei	PS103	4.0						
							& Th	11:00am-12:50pm	Wei	PS107							
							& Th	2:00pm-4:50pm	Wei	PS107							
						<b>PHYS 12 INTEGRATED PHYSICS AND CHEMISTRY</b>											
						0812	TTh	9:30am-10:45am	Wei	PS107	4.0						
							& F	9:30am-12:20pm	Wei	PS107							
						<b>Physiology</b>											
						<b>PHSO 1 HUMAN PHYSIOLOGY</b>											
						1008	MW	5:30pm-6:45pm	Ambaw/Sanculi	Online	3.0						
							3h 0m / week		Ambaw A	Online	3.0						
						4856	MW	12:30pm-1:45pm	Ambaw A	LF102	3.0						
						<b>PHSO 2 HUMAN PHYSIOLOGY LAB</b>											
						0837	M	7:00pm-9:50pm	Staff	LS107	2.0						
							&	4h 0m / week	Staff	Online							
						1013	W	8:00am-9:50am	Ambaw A	LS107	2.0						
							&	4h 0m / week	Ambaw A	Online							
						1014	W	10:30am-12:20pm	Ambaw A	LS107	2.0						
							&	4h 0m / week	Ambaw A	Online							
						4857	M	8:00am-9:50am	Ambaw A	LS107	2.0						
							&	4h 0m / week	Ambaw A	Online							
						4858	M	10:30am-12:20pm	Ambaw A	LS107	2.0						
							&	4h 0m / week	Ambaw A	Online							
						5162	W	7:00pm-8:50pm	Patel R	Online	2.0						
							&	4h 0m / week	Patel R	Online							

SECTION	DAYS	TIME	INSTRUCTOR	ROOM	UNITS	SECTION	DAYS	TIME	INSTRUCTOR	ROOM	UNITS	SECTION	DAYS	TIME	INSTRUCTOR	ROOM	UNITS			
<b>PSYC 25 LIFESPAN DEVELOPMENT</b>						<b>SOCI 14 SOCIOLOGY OF LATINOS AND LATINAS</b>						<b>SPAN 2S ELEMENTARY SPANISH FOR SPANISH SPEAKERS II</b>								
0109	3h	0m / week	Szechter L	Online	3.0	<i>Sections below offered at the MPC Education Center in Marina:</i>						0710	5h	0m / week	Cisneros S	Online	5.0			
0208	3h	0m / week	Nicolaides C	Online	3.0	0285	TTh	11:00am-12:15pm	Villarreal A	MA402	3.0	0917	Th	6:00pm-7:50pm	Borja F	Online	5.0			
0213	6h	20m / week (03/28-05/20)	Whitworth R	Online	3.0	<b>SOCI 15 INTRODUCTION TO RESEARCH METHODS</b>						&	3h	40m / week (01/31-05/20)	Borja F	Online				
4878	6h	20m / week (01/24-03/18)	Whitworth R	Online	3.0	0047	TTh	9:30am-10:45am	Villarreal A	SS101	3.0	<b>SPAN 3 INTERMEDIATE SPANISH I</b>								
4880	3h	0m / week	Nicolaides C	Online	3.0	<b>SOCI 19 INTRODUCTION TO STATISTICS FOR THE SOCIAL SCIENCES</b>						4904	TTh	6:00pm-7:25pm	Del Pozo J	Online	5.0			
<b>PSYC 35 INTRODUCTION TO ABNORMAL PSYCHOLOGY</b>						0221	4h	0m / week	Nicolaides C	Online	4.0	&	1h	35m / week	Del Pozo J	Online				
0779	TTh	9:30am-10:45am	Whitworth R	TBD-MA	3.0	<b>SOCI 22 ASIAN AMERICANS AND PACIFIC ISLANDERS IN AMERICAN SOCIETY</b>						<b>SPAN 3S INTERMEDIATE SPANISH FOR SPANISH SPEAKERS I</b>								
5168	T	6:30pm-9:20pm	Triplet R	SS202	3.0	0048	3h	0m / week	Batista V	MRNHS	3.0	0923	MW	11:00am-12:25pm	Borja F	Online	5.0			
<b>PSYC 38 BIOLOGICAL PSYCHOLOGY</b>						0757	6h	20m / week (03/28-05/20)	Cabrera V	Online	3.0	&	1h	30m / week	Borja F	Online				
0113	3h	0m / week	Kotecki A	Online	3.0	<b>SOCI 40 SOCIOLOGY OF MARRIAGES AND FAMILIES</b>						<b>SPAN 4 INTERMEDIATE SPANISH II</b>								
0238	3h	0m / week	Kotecki A	Online	3.0	4897	6h	20m / week (03/28-05/20)	White M	Online	3.0	0079	MW	11:00am-12:25pm	Lizano S	Online	5.0			
0491	3h	0m / week	Kotecki A	Online	3.0	<b>Spanish</b>						&	1h	35m / week	Lizano S	Online				
<b>PSYC 40 HUMAN SEXUALITY</b>						<b>SPAN 1 ELEMENTARY SPANISH I</b>						<b>SPAN 4S INTERMEDIATE SPANISH FOR SPANISH SPEAKERS II</b>								
0042	3h	0m / week	Luke J	Online	3.0	0661	TTh	9:00am-10:25am	Lizano S	Online	5.0	0928	5h	0m / week	Oliva P	Online	5.0			
1068	6h	20m / week (03/28-05/20)	Luke J	Online	3.0	&	1h	35m / week	Lizano S	Online		<b>SPAN 5 LITERATURE OF THE SPANISH-SPEAKING WORLD</b>								
<b>PSYC 50 HEALTH PSYCHOLOGY</b>						4899	MW	9:00am-10:25am	Kamimura H	Online	5.0	0020	W	6:00pm-7:15pm	Pico Renteri	Online	3.0			
4886	MW	11:00am-12:15pm	Lachman L	SS201	3.0	&	1h	35m / week	Kamimura H	Online		&	2h	25m / week (02/15-05/20)	Pico Renteri	Online				

## Real Estate

### REAL 51 REAL ESTATE PRACTICE

4887 TTh 6:00pm-9:10pm Jones Becky Online 3.0  
(01/25-03/17)

### REAL 52 LEGAL ASPECTS OF REAL ESTATE

0137 MW 6:00pm-9:10pm DeMaria K BMC107 3.0  
(01/24-03/16)

### REAL 53 REAL ESTATE FINANCE

0138 MW 6:00pm-9:10pm Hallock T BMC107 3.0  
(03/28-05/18)

## Sociology

### SOCI 1 INTRODUCTION TO SOCIOLOGY

0284 TTh 2:00pm-3:15pm Villarreal A SS101 3.0  
0655 3h 0m / week Chap M Online 3.0

*Sections below offered at the MPC Education Center in Marina:*  
0390 MW 9:30am-10:45am Villarreal A MA402 3.0

### SOCI 2 CONTEMPORARY SOCIAL PROBLEMS

0330 TTh 11:00am-12:15pm Villarreal A SS10 3.0

### SOCI 3 INTRODUCTION TO SOCIAL PSYCHOLOGY

0347 3h 0m / week Whitworth R Online 3.0  
0778 3h 0m / week Whitworth R Online 3.0  
0834 TTh 12:30pm-1:45pm Austin T SS102 3.0

### SPAN 1 ELEMENTARY SPANISH I

0661 TTh 9:00am-10:25am Lizano S Online 5.0  
& 1h 35m / week Lizano S Online  
4899 MW 9:00am-10:25am Kamimura H Online 5.0  
& 1h 35m / week Kamimura H Online  
4900 TTh 11:00am-12:25pm Lizano S Online 5.0  
& 1h 35m / week Lizano S Online  
4901 MW 11:00am-1:15pm Hernandez Ri HU210 5.0  
& 0h 40m / week Hernandez Ri Online  
(01/31-05/20)  
5174 MW 6:00pm-7:25pm Del Pozo J Online 5.0  
& 1h 35m / week Del Pozo J Online  
5175 TTh 6:00pm-8:25pm Hernandez Ri HU210 5.0  
& 0h 45m / week Hernandez Ri Online  
(02/07-05/20)

### SPAN 1S ELEMENTARY SPANISH FOR SPANISH SPEAKERS I

0249 TTh 11:00am-12:25pm Borja F Online 5.0  
& 2h 20m / week Borja F Online  
(01/31-05/20)  
0503 TTh 6:00pm-7:35pm Oliva P Online 5.0  
& 2h 45m / week Oliva P Online  
(02/15-05/20)  
0916 5h 0m / week Cisneros S Online 5.0  
0932 5h 0m / week Kamimura H Online 5.0

### SPAN 2 ELEMENTARY SPANISH II

0300 TTh 6:00pm-7:25pm Pico Renteri Online 5.0  
& 1h 35m / week Pico Renteri Online  
4903 MW 9:00am-10:25am Lizano S Online 5.0  
& 1h 35m / week Lizano S Online  
5177 TTh 11:00am-12:25pm Sanchez Sulc Online 5.0  
& 2h 20m / week Sanchez Sulc Online  
(01/31-05/20)

## Speech Communication

### SPCH 1 PUBLIC SPEAKING

0111 TTh 11:00am-12:15pm Cardinale M HU205 3.0  
0171 TTh 9:30am-10:45am May M HU205 3.0  
0439 17h 0m / week Sturt Online 3.0  
0521 TTh 8:00am-9:15am King G HU205 3.0  
0683 MTh 8:00am-9:30am Genauer R SHS 3.0  
(01/27-05/26)  
0689 MTh 9:50am-11:20am Baumbach J MRNHS 3.0  
(01/20-05/19)  
0704 MTh 8:00am-9:30am Baumbach J MRNHS 3.0  
(01/20-05/19)  
0822 MTWThF 9:00am-12:35pm Baumbach J Online 3.0  
0938 3h 0m / week Genauer R Online 3.0  
1011 17h 0m / week Staff Online 3.0  
1012 17/ 0m / week Sturt Online 3.0  
1159 17h 0m / week Staff Online 3.0  
1160 6h 20m / week Cardinale M Online 3.0  
(03/28-05/20)

SECTION	DAYS	TIME	INSTRUCTOR	ROOM	UNITS	SECTION	DAYS	TIME	INSTRUCTOR	ROOM	UNITS	SECTION	DAYS	TIME	INSTRUCTOR	ROOM	UNITS
1178		3h 0m / week	Cardinale M	Online	3.0	<b>Theatre Arts</b>						<b>World Languages</b>					
4905	MW	1:00pm-2:15pm	May M	HU205	3.0	<b>THEA 1 INTRODUCTION TO THEATRE</b>						The following languages are offered this term. For class information, please find them by alphabetical order throughout this Schedule of Classes.					
4907		3h 0m / week	Osburg	Online	3.0	4917	MW	9:30am-10:45am	Burns S	TH108	3.0	AMERICAN SIGN LANGUAGE					
4909	TTh	12:30pm-1:45pm	Cardinale M	HU205	3.0	<b>THEA 5 FILM APPRECIATION</b>						FRENCH					
5180	M	6:30pm-9:20pm	Genauer R	HU205	3.0	1062	T	6:30pm-9:20pm	Shapiro G	Online	3.0	JAPANESE					
<i>Sections below offered at the MPC Education Center in Marina:</i>						<b>THEA 6 SCRIPT ANALYSIS</b>						SPANISH					
0889	TTh	11:00am-12:15pm	King G	MA403	3.0	0314	3h 0m / week		Eck T	Online	3.0						
<b>SPCH 2 SMALL GROUP COMMUNICATION</b>						<b>THEA 9 HISTORY OF FILM: 1880s THROUGH 1950s</b>											
0082		3h 0m / week	Sturt	Online	3.0	0614	T	1:00pm-1:50pm	Albert M	Online	3.0						
0147		3h 0m / week	Sturt	Online	3.0	&		2h 0m / week	Albert M	Online							
4913	TTh	12:30pm-1:45pm	Baumback J	HU206	3.0	<b>THEA 15B ACTING II</b>											
<b>SPCH 3 INTERPERSONAL COMMUNICATION</b>						0311	TTh	11:00am-1:15pm	Cote L	Th208	3.0						
0497		3h 0m / week	Cardinale M	Online	3.0	<b>THEA 20 INTRODUCTION TO THEATRE DESIGN</b>											
5182	W	6:30pm-9:20pm	Triplett R	HU112	3.0	0688	1h 0m / week (lecture)		Staff	Online	3.0						
<b>SPCH 4 INTERCULTURAL COMMUNICATION</b>						&		6h 0m / week (lab)									
5183		3h 0m / week	Sturt	Online	3.0	<b>THEA 40A MAIN STAGE PRODUCTION/COMEDY</b>											
<b>SPCH 10 INTRODUCTION TO COMMUNICATION THEORY</b>						0650	MTWThF	4:00pm-5:30pm	Welch A	TBD	3.0						
0080		3h 0m / week	Staff	Online	3.0	<b>THEA 440 REHEARSAL AND PERFORMANCE</b>											
						4943	12h 40m / week		Staff	TBD	0.0						
												(03/28-05/22)					

# HEY MPC STUDENTS RIDE THE MST BUS FOR FREE!



Jump on the bus and go anywhere they go!

Show your current student I.D for unlimited access

- Check the bus schedule for the most current times on the MST website or app



# MPC

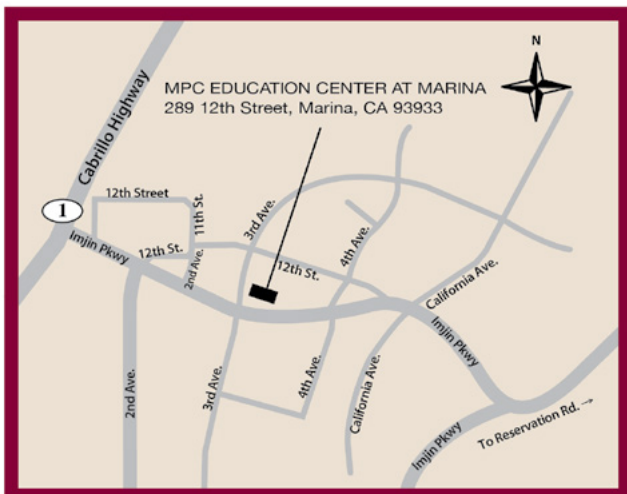
# MARINA EDUCATION CENTER

MONTEREY PENINSULA COLLEGE



Conveniently located for residents of Northwestern Monterey County, MPC's Education Center at Marina offers a variety of courses for transfer, career technical education, and personal enrichment. The Marina Education Center offers a variety of support resources and services to support your academic success.

Go to [mpc.edu/marina](http://mpc.edu/marina) to learn more!





SECTION	DAYS	TIME	INSTRUCTOR	ROOM	UNITS	SECTION	DAYS	TIME	INSTRUCTOR	ROOM	UNITS	SECTION	DAYS	TIME	INSTRUCTOR	ROOM	UNITS
---------	------	------	------------	------	-------	---------	------	------	------------	------	-------	---------	------	------	------------	------	-------

## MARINA EDUCATION CENTER

### Administration Of Justice

<b>ADMJ 4</b>	<b>CONCEPTS OF CRIMINAL LAW</b>	
0391	TTh	2:00pm-3:15pm
Hornik T	TBD-MA	3.0

### Computer Science and Information Systems

<b>CSIS 50</b>	<b>MS OFFICE APPLICATIONS</b>	
0349	M	3:30pm-4:20pm
Stewart M	MA103	2.0
&	1h 0m / week	Stewart M
		Online
<b>CSIS 50L</b>	<b>MS OFFICE APPLICATIONS LAB</b>	
0350	M	4:30pm-5:45pm
Stewart M	MA103	1.0
&	1h 25m / week	Stewart M
		Online

### English

<b>ENGL 1A</b>	<b>COLLEGE COMPOSITION</b>	
0481	MW	9:30am-10:45am
Van Dam	TBD-MA	3.0
4327	TTh	11:00am-12:15pm
McMillen J	TBD-MA	3.0
<b>ENGL 2</b>	<b>ARGUMENTATIVE WRITING AND CRITICAL THINKING</b>	
0256	M	6:30pm-9:20pm
Hulanicki	TBD-MA	3.0
0946	TTh	11:00am-12:15pm
Hulanicki	TBD-MA	3.0

### English As A Second Language

<b>ENSL 321</b>	<b>HIGH-BEGINNING READING AND WRITING</b>	
0163	MW	6:00pm-8:15pm
Warren N	TBD-MA	5.0
<b>ENSL 331</b>	<b>LOW-INTERMEDIATE READING AND WRITING</b>	
0463	M	6:00pm-8:15pm
Brady B	Online	5.0
& W	6:00pm-8:15pm	Brady B
		TBD-MA
<b>ENSL 421</b>	<b>HIGH-BEGINNING READING AND WRITING</b>	
0166	MW	6:00pm-8:15pm
Warren N	TBD-MA	0.0
<b>ENSL 431</b>	<b>LOW-INTERMEDIATE READING AND WRITING</b>	
0471	M	6:00pm-8:15pm
Brady B	Online	0.0
& W	6:00pm-8:15pm	Brady B
		TBD-MA

### Geology

<b>GEOL 12L</b>	<b>EARTH OCEAN CLIMATE: INTRODUCTION TO EARTH SCIENCE LAB</b>	
0374	Th	5:30pm-8:20pm
Staff	MA104	1.0

# VISIT MPC'S MARINA EDUCATION CENTER

AND MEET THE NEWEST MEMBERS OF OUR TEAM!



**CARLA BECERRA**  
Work-Based Learning (Internship) Coordinator



**JIHAN EJAN**  
Counselor

Take advantage of:

- In-person counseling appointments
- Career & internship exploration
- Campus referrals & connections
- Other activities & events to be engaged

### Mathematics

<b>MATH 12</b>	<b>NUMBER SYSTEMS</b>	
0912	TTh	5:30pm-7:20pm
Washburn	MA402	4.0

### Medical Assisting

<b>MEDA 120</b>	<b>MEDICAL ASSISTING CLINICAL TECHNIQUES I</b>	
0036	T	10:30am-12:45pm
Bell M	Online	3.0
& T	1:30pm-3:45pm	Bell M
		MT2
<b>MEDA 121</b>	<b>MEDICAL ASSISTING CLINICAL TECHNIQUES II</b>	
1006	M	10:30am-12:45pm
Bell M	Online	3.0
& M	1:30pm-3:45pm	Bell M
		MT2
4699	M	10:30am-12:45pm
Bell M	Online	3.0
& M	1:30pm-3:45pm	Bell M
		MT3
<b>MEDA 122</b>	<b>MEDICAL ASSISTING CLINICAL TECHNIQUES III</b>	
0037	W	10:30am-12:45pm
Bell M	MT2	3.0
& W	1:30pm-3:45pm	Bell M
		MT2
1007	W	10:30am-12:45pm
Bell M	Online	3.0
& W	1:30pm-3:45pm	Bell M
		MT3

### Nutrition And Food

<b>NUTF 1</b>	<b>NUTRITION</b>	
0115	TTh	9:30am-10:45am
Lord V	MA104	3.0

### Psychology

<b>PSYC 35</b>	<b>INTRODUCTION TO ABNORMAL PSYCHOLOGY</b>	
0779	TTh	9:30am-10:45am
Whitworth R	TBD-MA	3.0

### Sociology

<b>SOCI 1</b>	<b>INTRODUCTION TO SOCIOLOGY</b>	
0390	MW	9:30am-10:45am
Villarreal A	TBD-MA	3.0
<b>SOCI 2</b>	<b>CONTEMPORARY SOCIAL PROBLEMS</b>	
0330	TTh	11:00am-12:15pm
Villarreal A	TBD-MA	3.0

### Speech Communication

<b>SPCH 1</b>	<b>PUBLIC SPEAKING</b>	
0889	TTh	11:00am-12:15pm
King G	TBD-MA	3.0



MARINA / SEASIDE CAMPUS LOCATIONS	MA MPC Education Center at Marina 289 12th Street, Marina	SPS MPC Public Safety Training Center 2642 Colonel Durham Street, Seaside
<b>OFF – CAMPUS LOCATIONS</b>		
<b>AP</b> <b>Ariel Theatrical</b> 320 Main Street, Salinas	<b>HOPE</b> <b>Hope Building</b> 1663 Catalina St., Sand City	<b>NBI</b> <b>North Bay Industries</b> 1 University Circle, Monterey
<b>BHB</b> <b>Bayonet and Black Horse Golf Course</b> 1 McClure Way, Seaside	<b>HVMS</b> <b>Hidden Valley Music Seminars</b> 88 West Carmel Valley Road, Carmel Valley	<b>OC</b> <b>Oldemeyer Center</b> 986 Hilby Ave., Seaside
<b>BPH</b> <b>Bay Park Hotel</b> 1425 Munras Ave., Monterey	<b>MCFB</b> <b>Mid Coast Fire Brigade</b> 38841 Palo Colorado Rd., Carmel	<b>PGHS</b> <b>Pacific Grove High School</b> 615 Sunset Dr., Pacific Grove
<b>BSFB</b> <b>Big Sur Volunteer Fire Brigade</b> Pfeiffer Ridge Rd., Big Sur	<b>MCRFPD</b> <b>Monterey County Regional Fire Protection District</b> 19900 Portola Dr., Salinas	<b>PRT</b> <b>Pacific Repertory Theater</b> Monte Verde & 8th, Carmel
<b>CCLK</b> <b>Central Coast Lighthouse Keepers</b> Pt. Sur State Park, Big Sur	<b>MFD</b> <b>Monterey Fire Department</b> Pacific & Madison, Monterey	<b>SALLYG</b> <b>Sally Griffin Active Living Center</b> 700 Jewell Ave., Pacific Grove
<b>CFPD</b> <b>Cachagua Fire Protection District</b> 37200 Nason Rd., Carmel Valley	<b>MHS</b> <b>Monterey High School</b> 101 Herrmann Dr., Monterey	<b>SFD</b> <b>Seaside Fire Department</b> 1635 Broadway Ave., Seaside
<b>CHS</b> <b>Carmel High School</b> 3600 Ocean Ave., Carmel	<b>MRNHS</b> <b>Marina High School</b> 2995 Rendova Rd., Marina	<b>SHS</b> <b>Seaside High School</b> 2200 Noche Buena, Seaside
<b>CLINIC</b> <b>Health Facility Clinic</b> See Program Coordinator	<b>MTC</b> <b>Mott Training Center</b> 837 Asilomar Blvd, Pacific Grove	<b>SNJOSE</b> <b>South Bay Regional Public Safety Training Consortium</b> 3095 Yerba Buena Rd., San Jose
<b>HFD</b> <b>Hanford Fire Department</b> 350 West Grangeville Blvd., Hanford	<b>MTCA</b> <b>Mott Training Center Annex</b> 2211 Garden Rd., Monterey	

## Directory of Student Services

**Academic Council Petitions**  
(831) 645-1377

**Access Resource Center**  
(831) 646-4070

**Admissions & Records**  
(831) 646-4002 / admissions@mpc.edu

**Articulation**  
(831) 646-3013

**Assessment Office**  
(831) 646-4027 / assessment@mpc.edu

**Associated Students of MPC Office**  
(831) 646-4013

**Bookstore**  
(831) 657-4680

**CARE / CalWorks**  
(831) 646-4248

**Career / Transfer Resource Center**  
(831) 645-1336

**Certificate Requirements**  
(831) 646-4020

**Clubs, Student**  
(831) 646-4192

**Counseling Office**  
(831) 646-4020

**Dean, Student Services**  
(831) 645-1377

**Dean, Student Services**  
(831) 646-4155

**Dean, Student Services**  
(831) 646-4220

**Dual Enrollment**  
(831) 646-4282 / dualenrollment@mpc.edu

**Early Childhood Education Lab School**  
(831) 646-4066

**EOPS Office**  
(831) 646-4247

**Financial Aid** (Student Financial Services)  
(831) 646-4030

**First Year Experience**  
(831) 646-4165

**Graduation Requirements**  
(831) 646-4020

**Health Services**  
(831) 646-4017

**Hispanic Serving Institution (HSI) & Grants**  
(831) 645-7500

**Housing Information**  
(831) 646-4192

**Sandy Nee**  
Student Services Building

**Jacque Evans**  
Student Services Building

Student Services Building

**He Seon Ihn**  
Student Services Building

Student Services Building

**Julie Osborne**  
Student Center

**Bookstore Manager**  
Student Center

**Kacey Giammanco**  
Student Services Building

**Sudeshna Nand**  
General Classrooms

**Counselors**  
Student Services Building

**Julie Osborne**  
Student Center

**Alethea De Soto**  
Student Services Building

**LaKisha Bradley**  
Student Services Building

**Eric Ogata**  
Student Services Building

**Wendy Bates**  
Athletics / Kinesiology

**Jeff Provice**  
Early Childhood Education Lab School

**Eric Ogata**  
Student Services Building

Student Services Building

**Kelly Fletes**  
General Classrooms

**Counselors**  
Student Services Building

**LeAnn Contapay**  
Student Services Building

General Classrooms

**Julie Osborne**  
Student Center

**International Students**  
(831) 645-1380

**Marina Education Center**  
(831) 646-4850 / marinaedcenter@mpc.edu

**Math / Science Upward Bound**  
(831) 645-1306

**Parking Permits Purchase**  
(831) 646-4002

**Policies and Regulations, Student**  
(831) 646-4155

**Probation and Disqualification**  
(831) 645-1377

**Registration**  
(831) 646-4002 / admissions@mpc.edu

**Residency**  
(831) 646-4002 / admissions@mpc.edu

**Scholarships**  
(831) 646-4030

**Security**  
(831) 646-4099 / (831) 646-4292

**Sexual Harrassment / Sexual Misconduct**  
(831) 646-4850 / titleIX@mpc.edu

**Student Accounts**  
(831) 646-4046

**Student Activities**  
(831) 646-4192

**Student Center**  
(831) 646-4192

**Student Conduct**  
(831) 646-4155

**Student Employment**  
(831) 646-4195

**Student Equity & Achievements**  
(831) 646-4261 / seaprogram@mpc.edu

**Student Outreach & Retention**  
(831) 646-4845

**Title IX**  
(831) 646-4850 / titleIX@mpc.edu

**TRIO Student Support Services (SSS)**  
(831) 646-4246

**Transcripts**  
(831) 646-4002 / admissions@mpc.edu

**UMOJA**  
(831) 646-4027

**Undocumented Resource Center**  
undocu@mpc.edu

**Upward Bound**  
(831) 646-4089

**Veterans Assistance Office**  
(831) 646-4025 / (831) 646-4020

**Welcome Center**  
(831) 646-4136

**Alethea DeSoto**  
Student Services Center

**Jasmine Do**  
Student Services Building

**Online via WebReg**

**VP of Student Services**  
Administration Building

**Sandy Nee**  
Student Services Building

**Admissions & Records**  
Student Services Building

**Admissions & Records**  
Student Services Building

**Student Financial Services**  
Student Services Building

Student Center

**Kayla Valentine**  
Human Resources

**Fiscal Services**  
Administration Building

**Julie Osborne**  
Student Center

**Julie Osborne**  
Student Center

**VP of Student Services**  
Administration Building

**Lien Nguyen**  
General Classrooms

**LaKisha Bradley**  
Student Services Building

**Kelly Fletes**  
General Classrooms

**Kayla Valentine**  
Human Resources

**Grace Anongchanya**  
Student Services Building

**Admissions & Records**  
Student Services Building

General Classrooms

General Classrooms

**Sandra Washington**

Student Services Building

**Eileen Crutchfield**  
Student Center

**Kelly Fletes**  
General Classrooms



MPC

FOUNDATION

MONTEREY PENINSULA COLLEGE

*Thank you Business Partners for supporting MPC students!*



**Monterey**  
CREDIT UNION



**Buena Vista  
Land Company**



MONTEREY  
PRIVATE  
WEALTH



1st Capital Bank

Hayashi Wayland

Vanderbilt CPAs PC

Cardinale Moving & Storage  
Lozano Smith, LLP

Dole Fresh Vegetables  
Mahoney & Associates  
Monterey Plaza Hotel

Kennedy, Archer & Giffen  
McGilloway, Ray, Brown & Kaufman





# MONTEREY PENINSULA College

980 Fremont Street, Monterey, CA 93940  
(831) 646-4000 | www.mpc.edu

Non-Profit Org.  
U.S.  
**PAID**  
Monterey Peninsula  
Community College

## Residential Customer

ECRWSS

### Alphabetical Index

- ADM** ADMINISTRATION
- AC** ART & CERAMICS
- AD** ART DIMENSIONAL
- AG** ART GALLERY
- AMP** AMPHITHEATRE
- AS** ART STUDIO
- AT** AUTOMOTIVE TECHNOLOGY
- BMC** BUSINESS, MATH, COMPUTING
- DA** DANCE & ADAPTIVE PE
- ECE** EARLY CHILDHOOD EDUCATION
- FA** FACILITIES
- FC** FAMILY & CONSUMER SCIENCE
- FTC** FITNESS / TRAINING CENTER
- GA** GRAPHIC ARTS
- GC** GENERAL CLASSROOMS
- GYM** GYMNASIUM / PE / KINESIOLOGY
- HU** HUMANITIES
- HSS** HUMANITIES / SUPPORT SERVICES
- IC** INTERNATIONAL CENTER
- LF** LECTURE FORUM
- LTC** LIBRARY & TECHNOLOGY CENTER
- LS** LIFE SCIENCES
- MU** MUSIC
- MV** MODULAR VILLAGE
- NU** NURSING
- PS** PHYSICAL SCIENCE
- ST** STUDENT CENTER
- SS** SOCIAL SCIENCE
- STS** STUDENT SERVICES
- T-100** PRIE (RESEARCH) OFFICE
- TH** THEATRE

### Legend

- Accessibility Elevator
- Automated External Defibrillator
- Book Drop (Library)
- First Aid / Nurse
- Gender-Inclusive Restroom
- Information (831) 646-4000
- Lactation Room
- Parking Permit Kiosk
- Restrooms
- Security (831) 646-4099

