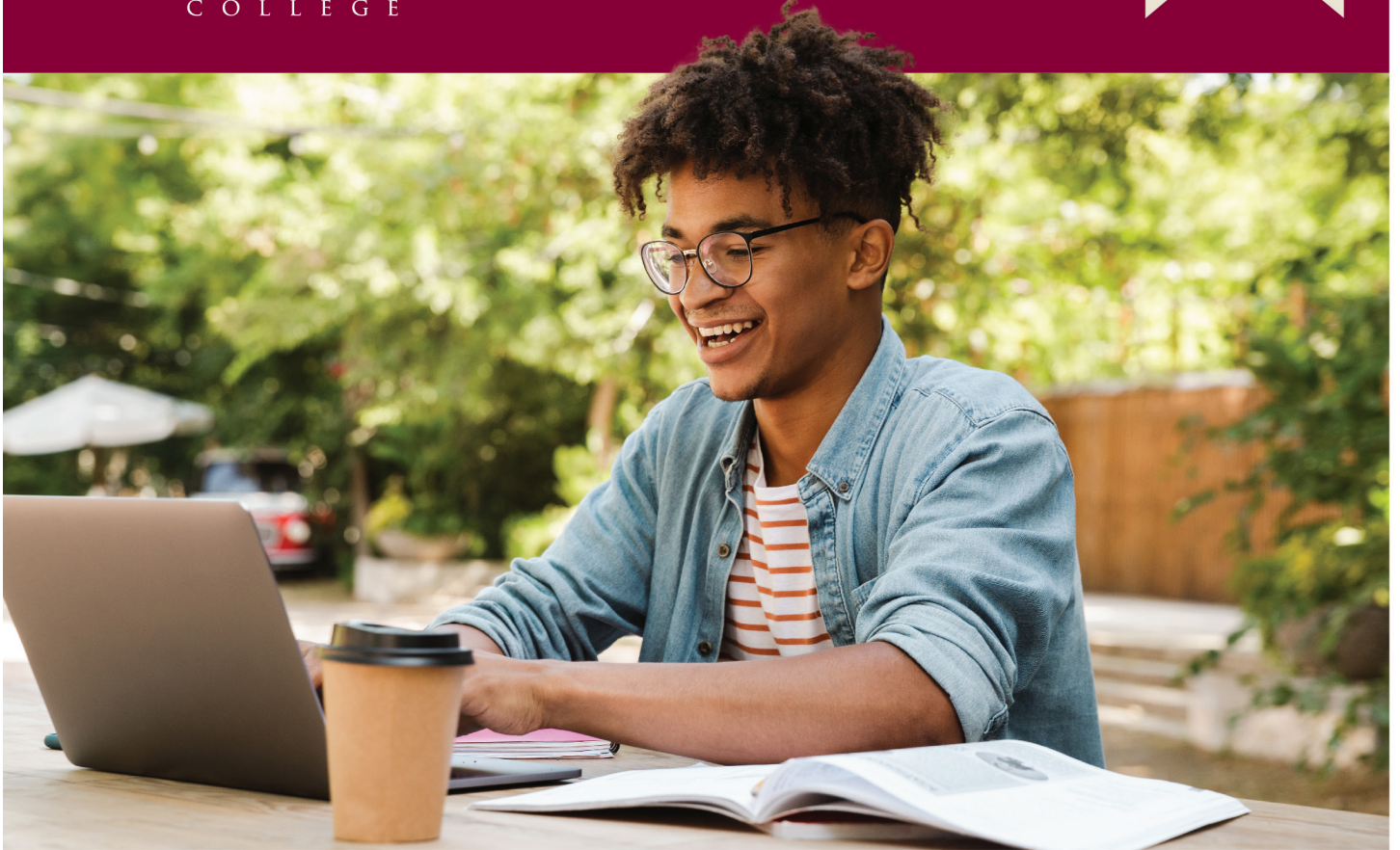




MONTEREY PENINSULA  
COLLEGE

# SUMMER 2021 CLASS SCHEDULE

[www.mpc.edu](http://www.mpc.edu)



expect to learn • expect to be challenged • expect the best



# MPC IS YOUR \$MART CHOICE

**Monterey Peninsula College Governing Board of Trustees:**

- Ms. Yuri Anderson, Chair - Area 2
- Dr. Loren Steck, Vice Chair - Area 5
- Ms. Rosalyn Green, Trustee - Area 1
- Ms. Debbie Anthony, Trustee - Area 4
- Mrs. Libby Downey, Trustee - Area 3
- Tenisha Hill, Student Trustee

**Monterey Peninsula College** is a community college accredited by the Western Association of Schools and Colleges. The college is open to high school graduates and all others 18 years of age or older who may profitably pursue a course of study. Students in grades 6-12 may attend with written approval from their school principal and their parent(s) prior to registering. Students in grades 6-8 need additional approval from the Dean of Student Services.

**Call Admissions & Records at (831) 646-4002 or email [admissions@mpc.edu](mailto:admissions@mpc.edu) for registration information**

All Monterey Peninsula College written publications will be made available in alternative formats (print, Braille, audiotape, or e-text). Requests for alternate media should be made to Access Resource Center at (831) 646-4070.

**MPC Smoking Policy:**  
The use of tobacco – to include smoking and/or chewing any form of tobacco – is only permitted in designated parking lots.

(MPC Board Policy #3570)

# President's Welcome

## Summer 2021 at Monterey Peninsula College

Welcome to Monterey Peninsula College (MPC), a vibrant institution of higher learning. MPC offers exceptional educational opportunities at our campus in Monterey, our Education Center at Marina, our Public Safety Training Center in Seaside, and online.

With a high-quality education, you can transform your personal and professional life. Whether your goal is to get a head start on your college education, earn a certificate or an associate degree, transfer to a four-year university, update your skills, train for a new career, or enrich your personal life, MPC can help you achieve it.

Wherever you are on your educational path, MPC will help you take the next step toward success.

**David Martin**  
Superintendent/President

## Verano 2021 en Monterey Peninsula College

Bienvenidos al Colegio de la Península de Monterey (MPC), un colegio vibrante de educación. MPC ofrece oportunidades excepcionales de educación en nuestras localidades en Monterey, Centro Educativo de Marina, Centro de Entrenamiento de Seguridad Pública, y en línea.

Con una educación de alto nivel, tú puedes transformar tu vida personal y profesional. Si tu meta es avanzar tu educación, recibir un certificado, un diploma asociado, transferirte a una universidad, mejorar tus habilidades, recibir entrenamiento para una nueva carrera, o enriquecer tu vida personal, MPC está aquí para ayudarte a obtenerlo.

En lo que necesites, MPC te ayudará a tomar el siguiente paso a tu éxito.



## Attend College Tuition Free with the MPC Promise

Monterey Peninsula College is proud to offer the *MPC Promise*, a free in-state tuition program that will cover all college enrollment fees, for all first-time, 1<sup>st</sup> and 2<sup>nd</sup> year students attending full time.

Visit [www.mpc.edu/promise](http://www.mpc.edu/promise) to learn more about the MPC Promise.

# Calendar of Important Dates

## Summer Session 2021

*June 7 to July 16, 2021 (6-week session)*

*June 7 to July 30, 2021 (8-week session)*

---

<b>April 12</b>	Priority registration begins
<b>April 19</b>	Open Registration
<b>June 6</b>	Last day to register through WebReg without an add code
<b>June 7</b>	Classes begin
<b>June 7 - 9</b>	Late registration and program changes. Please check online schedule for class specifics.
<b>July 1</b>	Graduation application deadline
<b>July 5</b>	HOLIDAY: Independence Day Observance
<b>July 16</b>	End of 6-week session
<b>July 30</b>	End of 8-week session

## Fall Session 2021

*August 13 to December 10, 2021*

---

<b>April 21</b>	Priority registration begins
<b>May 3</b>	Open registration
<b>August 12</b>	Last day to register through WebReg without an add code
<b>August 13</b>	Classes begin
<b>August 13 - 29</b>	Late registration – add codes required for registration
<b>August 28</b>	Last day to drop semester-length courses and be eligible for a refund
<b>August 29</b>	Last day to add a semester-length course with an add code
<b>August 29</b>	Last day to drop semester-length courses without a “W” grade
<b>August 30</b>	Census Day
<b>September 6</b>	HOLIDAY: Labor Day Observance
<b>September 11</b>	Last day to request pass/no pass grade option for semester-length courses
<b>November 1</b>	Graduation application deadline
<b>November 10</b>	Last date to drop semester-length courses and receive “W” grade
<b>November 11</b>	HOLIDAY: Veterans Day Observance
<b>November 25 - 27</b>	HOLIDAY: Thanksgiving
<b>December 6 - 10</b>	Final Examinations
<b>December 10</b>	End of semester

**Information:** (831) 646-4000

**Admission & Records:**  
(831) 646-4002 or  
admissions@mpc.edu

**TTY:** (831) 645-1319

**Web Registration (WebReg):**  
www.mpc.edu

**Campus Security:**  
(831) 646-4099

**Counseling:**  
(831) 646-4020

**Assessment Center:**  
(831) 646-4027

**Child Development Center:**  
(831) 646-4066

**Bookstore:**  
(831) 657-4680

**Library:**  
(831) 646-4095

**Marina Education Center:**  
(831) 646-4850

**MPC Public Safety  
Training Center:**  
(831) 646-4240

**Financial Aid:**  
(831) 646-4030

### Schedule Changes

Adds and/or Drops can be made by WebReg 24 hours a day online.

If course registration is not completed before the term begins, students must attend class, request an add code from the instructor and use WebReg to register during the late registration period.

### STUDENT SERVICES:

Admissions & Records Office  
(831) 646-4002  
[www.mpc.edu/admissions](http://www.mpc.edu/admissions)

# When to Register

**Registering for MPC classes is easy!** It is recommended that you register as early as possible to get the classes that you want.

Web Registration (WebReg) at [www.mpc.edu](http://www.mpc.edu) open 24 hours per day.  
Computers and WebReg assistance available in the Student Services Building.

## Priority Registration

**CONTINUING STUDENTS** are students enrolled at MPC during Spring 2021.

**RETURNING STUDENTS** are students who enrolled at MPC previously, but not in Spring 2021.

**NEW AND NEW TRANSFER STUDENTS** are students who have never enrolled at MPC.

**DUAL ENROLLMENT STUDENTS** are students who are currently in grades 6-12.

PRIORITY	GROUP	PRIORITY DATE
Priority 1	Active Military, Veterans, Foster Youth, Homeless Youth, ARC, EOPS & CalWORKS. Students must be either continuing MPC students in good standing <sup>1</sup> (up to 99.9 units <sup>2</sup> ) or fully matriculated <sup>3</sup> if new or returning	April 12
Priority 2	Student Athletes, ASMPC Officers and students in the following programs: First Year Experience, Teacher Pathway Program, Umoja, and TRIO. Students must be either continuing MPC students in good standing <sup>1</sup> (up to 99.9 units <sup>2</sup> ) or fully matriculated <sup>3</sup> if new or returning	April 13
Priority 3	Continuing MPC students in good standing <sup>1</sup> with 30.0-99.9 units in progress and on file	April 14
Priority 4	Continuing MPC students in good standing <sup>1</sup> with 0.0-29.5 units in progress and on file	April 15
Priority 5	New fully matriculated <sup>3</sup> students	April 16
Open Registration	Open Registration for all other New and Returning students, dual enrolled students (grades 6-12), and continuing MPC students with 99.9+ units in progress and on file	April 19

<sup>1</sup> **In good standing:** student who is NOT on academic or progress dismissal or who is not on any probation for the last two consecutive semesters (Foster Youth will not lose priority and need to be manually adjusted)

<sup>2</sup> **100 unit:** once a student reaches 100 units, he/she loses priority limit includes only degree applicable units (MPC courses numbered 1-299)

<sup>3</sup> **Fully Matriculated:** Student has completed Assessment, Orientation, and has an Education Plan on file for the term priority registration is for.

## Late Registration

June 7, 2021 - June 9, 2021

Attend the first class, request an Add Code from the instructor and register using WebReg. Need assistance?  
Please visit Admissions & Records in the Student Services Building or call **(831) 646-4002**.

**Please note: There are many drawbacks to registering late. Classes would have already begun; the classes you want may already be filled; and counseling will be limited. So register early!**

# Steps for New Students

New students should complete each of the following steps in order to be cleared for registration.

## STEP 1. APPLICATION

Complete application online at [www.mpc.edu](http://www.mpc.edu)

1. Click on “Apply for Admission”
2. Follow the instructions on CCCApply to submit an application.

## STEP 2. FINANCIAL AID (OPTIONAL)

Students who need assistance paying their fees are encouraged to submit the FAFSA ([fafsa.ed.gov](http://fafsa.ed.gov)) or DREAM Act ([dream.csac.ca.gov](http://dream.csac.ca.gov)) application before they register for classes.

See page 8 for more Financial Aid information.

## STEP 3. ASSESSMENT & PLACEMENT

Students receive English & math placement recommendations within five minutes of completing the Application for Admission. Recommendations can be adjusted using the Guided Self Placement and answering questions regarding comfort levels with the concepts and skills necessary for success in English as a Second Language and transfer-level English and/or math coursework. Please see our website for the most current information and procedures. See Assessment information on our website at [www.mpc.edu/assessment](http://www.mpc.edu/assessment) or call (831) 646-4027.

## STEP 4. ORIENTATION

Choose one of the following:

- A) Register for PERS 10, **OR**
- B) Complete the orientation online or in person. Please review the following website: [www.mpc.edu/orientation](http://www.mpc.edu/orientation) or call (831) 646-4845.

## STEP 5. COUNSELING/ADVISEMENT (EDUCATION PLAN)

Choose one of the following:

- A) Complete the Education Plan online at: [www.mpc.edu/counseling](http://www.mpc.edu/counseling), **OR**
- B) Complete the Education Plan with a counselor. Call (831) 646-4020 for an appointment or make your appointment online through WebReg.

## STEP 6. REGISTRATION

Register for classes online, via WebReg at [www.mpc.edu](http://www.mpc.edu)

# Your **ONLINE** education is just a *click away!*

**MPC has something for *everyone* and online classes for *all* types of learners!**

Looking for convenience and flexibility to fit a busy schedule?  
- Learn on your own time with an asynchronous class.

Looking for more human interaction and engagement?  
- Try a synchronous class. Meet online on a specific schedule just like you do on campus!

**Launch *your* future by enrolling in one of MPC's engaging online courses today!**

[www.mpc.edu/onlinecourses](http://www.mpc.edu/onlinecourses)



# How to Register

## Who may use WebReg

**Continuing Students:** Students who enrolled at MPC for the previous term. (Students in grades 6-12 are always considered new and must always submit an Application for Admission and an approved Dual Enrollment Form.

**Returning Students:** Students who enrolled at MPC before, but not the previous term.

**New and Transfer Students:** Students who have submitted their Application for Admission. Read the information about the Step Program in this schedule or contact the Counseling Department.

## WebReg Clearance

**Students who are not paying their own fees:** Students included in this group are those using Vocational Rehabilitation (Chapter 31), VA CalVet, State Department of Rehabilitation, etc. Students are responsible for all fees unless appropriate forms are received by the Admissions & Records Office within the first two weeks of the term

**Students who have been dismissed from Monterey Peninsula College:** Students must petition for readmission through the Academic Council. Check your petition status on WebReg 48 hours after Academic Council review (2nd and 4th Tuesdays).

## Welcome to WebReg (Web Registration) [www.mpc.edu](http://www.mpc.edu)

**Registration in more than 18 units:** Students must have counselor approval if registering for more than 18 units in a semester.

**U.S. Military Tuition Assistance:** Once the approved Tuition Assistance form is submitted to the Admissions & Records Office, registration may be permitted.

**U.S. Military Dependents using nonresident free exemption:** Signatures are required on the U.S. Military Dependent Residence Statement every semester/session of enrollment. Registration fees are the responsibility of the student unless the form is submitted to the Admissions & Records Office within the first two weeks of the term.

**International Students:** All students on F-1 or M-1 visas and students not possessing permanent resident visas: Approval from International Student Program office is required.

**6th-12th Grade Students:** Students in grades 6-12 and who are at least 12 years of age must complete an Application for Admission and a Dual Enrollment Form. Registration is permitted after both forms are completed and submitted to the Admissions & Records Office. Students in grades 6-8 must have additional approval from the Dean of Student Services. Call (831) 645-1377 to schedule an appointment. No approvals will be granted after the term begins.

# Summer 2021 Cost and Payment Information

### Course Fees

Enrollment Fee	\$46 per unit
Nonresident Fee*	\$290 per unit
Instructional Material Fee	Varies

### Optional Fees

Child Development Center Donation	\$3
Daily Parking Permit	\$3
Annual Parking Permit	\$95
Semester Parking Permit	\$53

### Payment

Students may log into their WebReg portal and pay fees. Additionally, fees may be paid in person at the Fiscal Services Office located in the Administration Building.

\*Nonresident and international students are charged both enrollment and nonresident fees per unit for course registration.

In addition, international (F1 visa) students may have other fees. Please visit: [www.mpc.edu/internationalstudents](http://www.mpc.edu/internationalstudents) for more information.

### Term/Session Fees

Health Fee	\$20
Student Center Use Fee	\$10
Student Body Fee	\$5
Student Representative Fee	\$2

As per the college catalog, all fees and tuition charges are subject to change without prior notification.

For more detailed information on current fees, waivers, and refunds please visit: [www.mpc.edu/admissions/fees-payments-refunds](http://www.mpc.edu/admissions/fees-payments-refunds)

## WebReg Worksheet

To access WebReg, Monterey Peninsula College requires students to use their Student ID Number (if known), otherwise students may use their Social Security Number to access their Student Portal.

### WebReg Hours:

[www.mpc.edu](http://www.mpc.edu)

24 hours per day

### WebReg Help Line Hours:

Monday-Thursday: 9:00 am - 4:00 pm

Friday: 9:00 am - 12:00 pm

Call (831) 646-4002

**Guidelines:** Complete the worksheet on the right of this page before logging in. Have a list of alternate courses, as some of the classes may be closed.

**NOTE:** *If you were not registered at MPC in the previous term, and have not submitted an Application for Admission for the term you wish to register for, registration will be denied.*

If you have changed your mailing address, telephone number and/or email address, update the information on WebReg.

The fastest, most secure way to pay for classes is through WebReg with a VISA or MasterCard. Need an alternative? There is a drop box outside the Administration Building to drop off payments.

**Computers and WebReg assistance available at the Admissions & Records Office in the Student Services Building.**

Priority registration for Summer classes begins April 12, 2021

**WebReg Helpline**  
(831) 646-4002

## To Register by WebReg:

1. Visit MPC's web site ([www.mpc.edu](http://www.mpc.edu)).
2. Click on WebReg (at the top of the website).
3. For initial entry
  - **ID Number** (enter your SSN if you do not know your student ID number)
  - **PIN** (enter your 8-digit birth date (MMDDYYYY), no spaces)
4. Click Login.
5. If asked, update your PIN. It is your responsibility to remember the PIN you enter. From this point, you will be using this PIN when accessing your WebReg account.
6. You are now in your WebReg account. Update your information, if needed  
**PLEASE READ THE INSTRUCTIONS PRINTED ON EACH SCREEN**
7. To register, click on Add/Drop/Register.
8. Select the semester/session in which you are registering.
9. Enter the 4-digit section number of the class(es) you wish to register into the "Enter Section Number box, click the "Add to Cart" button.

4 Digit Section #	Course	Units	Day(s)	Time

If the course you entered has the option of being taken for Letter Grade or P/NP (Pass/No Pass), you must now choose the grading option for which you wish to take the course. Click the option of your choice. Consult a counselor with questions.

The information related to the section number you entered appears. If this is the correct course and you wish to add additional courses, click "More Schedule Changes." Continue this process until you have requested all your courses.

If you have chosen the wrong course, click the shopping cart under the Remove button to drop the course.

10. After you have enrolled in all your desired courses, continue your registration by clicking on "Checkout"
11. The amount of money you owe for this transaction appears. **You must choose a payment option to finalize your registration.** If you clicked on payment to be made by check or cash, please complete the WebReg Payment Slip and submit your payment to Fiscal Services located in the Administration Building.
12. **When adding or dropping courses, ALWAYS PRINT YOUR RECEIPT.** This will be your record of the courses that you have added and/or dropped.
13. **If you need to make schedule changes at a later time,** you must FIRST drop the courses that you no longer wish to take and then add the classes that you want to take instead.
14. If you wish to purchase a Parking Permit, click Purchase Optional Fees. Parking permits will be mailed to students. Make sure your address is current in WebReg. Parking permits will begin to be mailed a few weeks before the term begins. Payment must be received before permits can be mailed out. So order and pay early!

# Financial Aid Information

## What is Financial Aid?

Financial aid is the money you receive from federal, state and local programs to help you meet the expenses (books, enrollment fee, food, rent, and transportation) of a college education. Student Financial Services provides different types of financial aid, such as grants, scholarships, work-study, and Direct Student Loans. **THE PRIMARY RESPONSIBILITY OF PAYING COLLEGE COSTS RESTS WITH YOU AND YOUR PARENTS.**

## Who is eligible?

You do not need to be low-income to be eligible for financial aid, but you must demonstrate financial need. Your financial need is the difference between the cost of attendance and your expected family contribution. If you would like to apply for financial, APPLY NOW!

## How do I apply?

To be considered for financial aid, you will need to complete the Free Application for Federal Student Aid (FAFSA) as soon as possible at <https://fafsa.gov> or the Dream Act Application at [www.csac.ca.gov/dream\\_act.asp](http://www.csac.ca.gov/dream_act.asp) Student Financial Services will notify you of any required documents to complete your financial aid file or you can check your financial aid portal.

## What are the General Eligibility Requirements?

In order to be eligible for federal, state, and institutional financial aid programs, a student must meet the following requirements:

- Must be accepted for admission and enrolled in an eligible academic program.
- Must have a High School Diploma or the equivalent (GED), or have received the California High School Proficiency Examination (CHSPE).
- Must be making satisfactory academic progress (SAP), whether or not you received financial aid.
- Must be a U.S. Citizen or eligible non-citizen with a valid Social Security Number for Federal aid.
- Must be in compliance with Selective Service Registration requirements.
- Must have resolved any drug conviction issues.
- Must not be in default on any Federal Loan Program or in repayment of any Federal Grant Programs.
- Must demonstrate financial need.

## What is Financial Aid Satisfactory Academic Progress?

In order to show financial aid satisfactory academic progress during a given semester, you must:

- Earn cumulative grade point averages of at least 2.0 ("C" average);
- Complete 2/3 of the units you attempt cumulatively and complete your degree within the 150% maximum time frame (90 units attempted.)
- For the California College Promise Grant, maintain 2.0 GPA and complete 50% of attempted units each semester and overall.

## What are my responsibilities as a student receiving Financial Aid?

As a student receiving financial aid, you are required to:

- Sign up for an MPC email account.
- Notify Student Financial Services of any change in your name, marital status, Social Security Number or income.
- Respond immediately to all correspondence sent to you by the Student Financial Services office, the Federal or State Student Aid Programs.
- Register for your classes, and complete all requirements for financial aid.
- Maintain satisfactory academic progress.

*\*Please note that it is the student's responsibility to pay any outstanding fees to MPC.*

## What is the deadline to apply for Financial Aid?

The Free Application for Federal Student Aid (FAFSA) becomes available October 1st of every year. The application for financial aid has to be completed every year you are planning to attend school. There is a priority deadline which is March 2nd, so it is encouraged to apply early.

## How can I check on my status?

There are a few ways to check on your status, They are:

- Visiting the financial aid office in the Student Service Building.
- Sending an email from your MPC email account.
- Through WebReg Portal under My Financial Aid.

## When will I know if I am eligible for Financial Aid?

Once you have completed the financial aid application process, your eligibility for financial aid will be determined. Student Financial Services will email you a financial aid award letter. The award letter will inform you of the amount and types of financial aid you will be eligible to receive. If you are not eligible to receive financial aid, Student Financial Services will notify you by email as well.

## What about fee waivers?

- **California College Promise Grant (CCPG):** This California-funded fee waiver program assists students who are classified as California residents with the mandatory Enrollment Fee.
- **CCPG Method A:** Assists students who are receiving public assistance, or are dependents of a parent on public assistance.
- **CCPG Method B:** Assists students as determined by the California Income Standards.
- **CCPG Method C:** Assists students who have completed the FAFSA and have \$1,104 in need. This is determined by Student Financial Services.
- **MPC PROMISE SCHOLARSHIP:** First Time-Full Time Students, First and Second Year Tuition Free! See website at: [www.mpc.edu/promise](http://www.mpc.edu/promise).

## HOW DO I APPLY FOR STUDENT LOANS?

To apply for student loans, you will need to complete the steps listed at: <https://www.mpc.edu/financial-aid/applications/direct-federal-student-loan>

Student Financial Services is located in the Student Services building. Please refer to the Financial Aid website for office hours. Contact Student Financial Services for assistance at **(831) 646-4030**, send an email to [financialaid@mpc.edu](mailto:financialaid@mpc.edu), or visit our website at [www.mpc.edu/financial-aid](http://www.mpc.edu/financial-aid).



# GET CONNECTED. FEEL SUPPORTED. BE PREPARED!

## MPC Promise Steps for Free Tuition

**Join the Pack Day**  
**Friday, May 7<sup>th</sup>**  
**9:00AM - 8:30PM**

### A fun filled day to learn about:

- MPC Promise = Free Tuition
- Application Process
- Registration
- Academic Advising
- Student Life/Clubs
- First Year Experience
- Lobo Athletics
- and Much More!

*\*Open to all graduates from CA high schools or first-time college students. Must be a full-time CA resident.*

**Step 1**

#### Apply to MPC

Complete an online application for admission to MPC through CCC Apply.

**Step 2**

#### Apply for Financial Aid

Complete the Free Application for Federal Student Aid (FAFSA), or the California Dream Act Application.

**Step 3**

#### Meet an MPC Counselor

MPC counselors will help you complete your educational plan and select an academic pathway.

**Step 4**

#### Enroll Full-Time at MPC

Register for full-time classes for the Fall and Spring semester to keep your MPC Promise.

Registration recommended • [www.mpc.edu/jointhepack](http://www.mpc.edu/jointhepack) • (831)-646-4261



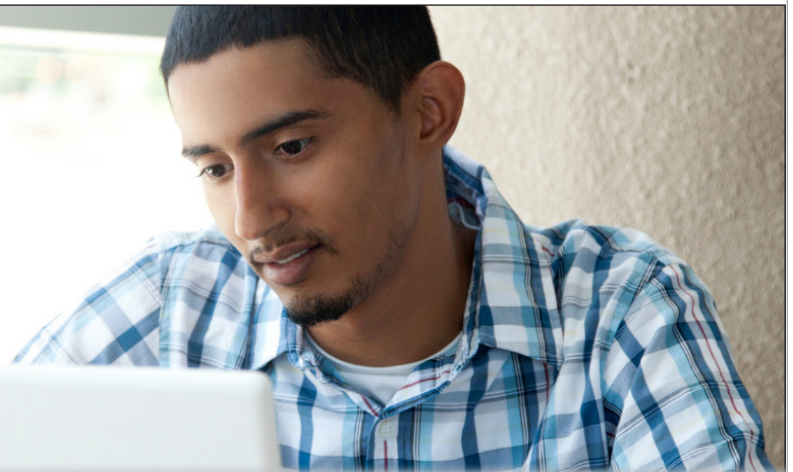
# Start in the summer & set yourself up for success this fall!

MPC's 2-week summer bridge programs are designed to help first year college students succeed by building critical skills, developing confidence, and connecting students with a support system to ensure college success. All bridge programs include dedicated counselors, coaching mentors, and tutors.

## Jump Start Dates July 19 - July 30

For more information visit: [www.mpc.edu/jumpstart](http://www.mpc.edu/jumpstart)

## GET READY TO TAKE AN **ONLINE** CLASS



### Complete the online orientation course to prepare for success!

We can assist you with the technology you need, like free WiFi and a Chromebook. Our online education support staff, librarians, math, English, and STEM tutors are available to help you with your classes, too!

To learn more, visit [www.mpc.edu/online](http://www.mpc.edu/online)

SECTION	DAYS	TIME	INSTRUCTOR	ROOM	UNITS	SECTION	DAYS	TIME	INSTRUCTOR	ROOM	UNITS	SECTION	DAYS	TIME	INSTRUCTOR	ROOM	UNITS
---------	------	------	------------	------	-------	---------	------	------	------------	------	-------	---------	------	------	------------	------	-------

### Administration Of Justice

<b>ADMJ 2</b>	<b>INTRODUCTION TO ADMINISTRATION OF JUSTICE</b>				
8001	6h 20m / week (06/07-07/30)	Turner J.	Online	3.0	
<b>ADMJ 4</b>	<b>CONCEPTS OF CRIMINAL LAW</b>				
0129	6h 20m / week (06/07-07/30)	Turner J.	Online	3.0	

### Anatomy

<b>ANAT 5</b>	<b>HUMAN BIOLOGY</b>				
0025	12h 40m / week (06/07-07/30)	Bard D	Online	4.0	
0054	12h 40m / week (06/07-07/30)	Patel R	Online	4.0	
0182	12h 40m / week (06/07-07/30)	Noel M	Online	4.0	
0188	12h 40m / week (06/07-07/30)	Noel M	Online	4.0	

### Anthropology

<b>ANTH 2</b>	<b>INTRODUCTION TO BIOLOGICAL ANTHROPOLOGY</b>				
0216	8h 25m / week (06/07-07/16)	Michaels G	Online	3.0	

<b>ANTH 4</b>	<b>INTRODUCTION TO CULTURAL ANTHROPOLOGY</b>				
0137	8h 25m / week (06/07-07/16)	Michaels G	Online	3.0	

### Art - Basics

<b>ARTB 10</b>	<b>SURVEY OF THE ARTS</b>				
0023	6h 20m / week (06/07-07/30)	Tanous M	Online	3.0	

### Art - Ceramics Technology

<b>ARCE 1</b>	<b>INTRODUCTION TO CERAMICS</b>				
0016	17h 0m / week (06/07-07/16)	Eisenbach D	Online	3.0	
<b>ARCE 1A</b>	<b>CERAMIC HANDBUILDING I</b>				
0017	17h 0m / week (06/07-07/16)	Eisenbach D	Online	3.0	
<b>ARCE 1B</b>	<b>CERAMIC HANDBUILDING II</b>				
0018	17h 0m / week (06/07-07/16)	Eisenbach D	Online	3.0	
<b>ARCE 1C</b>	<b>CERAMIC HANDBUILDING III</b>				
0020	17h 0m / week (06/07-07/16)	Eisenbach D	Online	3.0	
<b>ARCE 1D</b>	<b>CERAMIC HANDBUILDING IV</b>				
0021	17h 0m / week (06/07-07/16)	Eisenbach D	Online	3.0	

### Art - History

<b>ARTH 1</b>	<b>ART APPRECIATION</b>				
0003	8h 25m / week (06/08-07/14)	Madsen	Online	3.0	
0256	8h 25m / week (06/08-07/14)	Madsen	Online	3.0	

### Art - Photography

<b>ARTP 10</b>	<b>INTRODUCTION TO PHOTOGRAPHY</b>				
0019	12h 40m / week (06/07-07/01)	Mettler	Online	3.0	

### Art - Studio

<b>ARTS 11A</b>	<b>SKETCH I</b>				
0141	TTh 11:00am-12:50pm & 4h 25m / week (06/22-07/29)	Gomez G Gomez G	Online	1.5	
<b>ARTS 11B</b>	<b>SKETCH II</b>				
0142	TTh 11:00am-12:50pm & 4h 25m / week (06/22-07/29)	Gomez G Gomez G	Online	1.5	
<b>ARTS 16</b>	<b>LANDSCAPE DRAWING AND PAINTING</b>				
0081	TTh 12:30pm-1:45pm & 5h 25m / week (06/08-07/15)	Thorson C Thorson C	Online	1.5	

**STUDIO ARTS**

Express yourself and connect to a creative community while learning remotely!

[www.mpc.edu/creativearts](http://www.mpc.edu/creativearts)

SECTION	DAYS	TIME	INSTRUCTOR	ROOM	UNITS	SECTION	DAYS	TIME	INSTRUCTOR	ROOM	UNITS	SECTION	DAYS	TIME	INSTRUCTOR	ROOM	UNITS
---------	------	------	------------	------	-------	---------	------	------	------------	------	-------	---------	------	------	------------	------	-------

## Astronomy

### ASTR 10 INTRODUCTION TO ASTRONOMY

0134 6h 20m / week Hickok E Online 3.0  
(06/07-07/30)

### ASTR 10L INTRODUCTION TO ASTRONOMY LABORATORY

0136 6h 20m / week Hickok E Online 1.0  
(06/07-07/30)

## Athletics

### ATHL 18 FUNDAMENTALS OF FOOTBALL

8392 6h 40m / week Palmer R FFIELD 0.5  
(06/28-07/29)

8393 6h 40m / week Washington R FFIELD 0.5  
(06/28-07/29)

### ATHL 29 VARSITY ATHLETIC CONDITIONING

0010 5h 35m / week O'Hare PE201 0.5  
(06/15-07/22)

0011 5h 35m / week Spiering PE201 0.5  
(06/14-07/19)

0027 5h 35m / week Carroll M TRACK 0.5  
(06/14-07/22)

0053 5h 35m / week Cisneros M FFIELD 0.5  
(06/14-07/22)

0214 5h 35m / week Phillips D BFIELD 0.5  
(06/14-07/22)

8394 4h 45m / week Moore K PE201 0.5  
(06/14-07/26)

## Automotive Technology

### AUTO 100 INTRODUCTION TO AUTOMOTIVE TECHNOLOGY

0090 8h 25m / week Evans M Online 4.0  
& MTWThF 9:00am-10:30am AT103  
(06/07-07/16)

0092 8h 25m / week Evans M Online 4.0  
& MTWThF 10:45am-12:15pm AT103  
(06/07-07/16)

### AUTO 106 AUTOMOTIVE BRAKE SYSTEMS AND SAFETY INSPECTION

0095 8h 25m / week Lawrence J Online 4.0  
& MTWThF 1:00pm-2:30pm Lawrence J AT103  
(06/07-07/16)

0098 8h 25m / week Lawrence J Online 4.0  
& MTWThF 2:45pm-4:15pm AT103  
(06/07-07/16)

## Biology

### BIOL 10 PRINCIPLES OF BIOLOGY

0033 12h 40m / week Gilbert P S Online 4.0  
(06/07-07/30)

0114 12h 40m / week Gilbert P S Online 4.0  
(06/07-07/30)

### BIOL 26 APPLIED MICROBIOLOGY LABORATORY

0105 8h 25m / week Craig H Online 1.0  
(06/07-07/16)

0106 8h 25m / week Craig H Online 1.0  
(06/07-07/16)

0110 8h 25m / week Craig H Online 1.0  
(06/07-07/16)

### BIOL 31 ENVIRONMENTAL SCIENCE

0100 8h 25m / week Kochevar R Online 3.0  
(06/14-07/23)

0108 8h 25m / week Kochevar R Online 3.0  
(06/14-07/23)

8031 6h 20m / week Raskoff K Online 3.0  
(06/07-07/30)

### BIOL 32 ENVIRONMENTAL SCIENCE LABORATORY

0103 8h 25m / week Kochevar R Online 1.0  
(06/14-07/23)

0184 6h 20m / week Kochevar R Online 1.0  
(06/07-07/30)

## Business

### BUSI 1A FINANCIAL ACCOUNTING

0212 8h 25m / week Mikkelsen Online 4.0  
(06/07-07/30)

### BUSI 1B MANAGERIAL ACCOUNTING

0120 8h 25m / week Mikkelsen Online 4.0  
(06/07-07/30)

### BUSI 18 BUSINESS LAW

0168 6h 20m / week Castillo L Online 3.0  
(06/07-07/30)

8033 6h 20m / week Castillo L Online 3.0  
(06/07-07/30)

### BUSI 20 INTRODUCTION TO BUSINESS

0132 6h 20m / week Gravelle K Online 3.0  
(06/07-07/30)

0247 6h 20m / week Gravelle K Online 3.0  
(06/07-07/30)

### BUSI 50 INTRODUCTION TO MARKETING

0117 6h 20m / week Barrie B Online 3.0  
(06/07-07/30)

**Complete your college science requirements this summer!**

**ANAT 5**  
Human Biology

**BIOL 10**  
Principles of Biology

**BIOL 26**  
Applied Micro-Biology Lab

**BIOL 31 & 32**  
Environmental Science & Lab

**CHEM 1B**  
General Chemistry II

**CHEM 2**  
Fundamental Chemistry

**CHEM 10**  
Everyday Chemistry

**CHEM 30A**  
Chemistry for Health Sciences

**GEOL 2 & 2L**  
Physical Geology & Lab

## Business Skills Center

### BUSC 109 KEYBOARDING FOR COMPUTERS

0101 8h 25m / week Walker J Online 1.0  
(06/14-07/23)

### BUSC 150 COMPUTER APPLICATIONS - MICROSOFT EXCEL

0031 8h 25m / week Walker J Online 1.0  
(06/14-07/23)

SECTION	DAYS	TIME	INSTRUCTOR	ROOM	UNITS	SECTION	DAYS	TIME	INSTRUCTOR	ROOM	UNITS	SECTION	DAYS	TIME	INSTRUCTOR	ROOM	UNITS
---------	------	------	------------	------	-------	---------	------	------	------------	------	-------	---------	------	------	------------	------	-------

## Chemistry

### CHEM 1B GENERAL CHEMISTRY II

0205	21h 45m / week (06/07-07/23)	Rivera F	Online	5.0
8038	21h 45m / week (06/07-07/23)	Rivera F	Online	5.0

### CHEM 2 FUNDAMENTAL CHEMISTRY

0243	11h 30m / week & F 1:00pm-3:50pm (06/07-07/23)	Bishop M	Online	4.0
------	--	----------	--------	-----

### CHEM 10 EVERYDAY CHEMISTRY

8343	11h 30m / week & Sat 9:00am-11:50am (06/05-07/24)	Bishop M	Online	4.0
------	---	----------	--------	-----

### CHEM 30A INTRODUCTORY CHEMISTRY FOR HEALTH SCIENCES

0121	17h 0m / week (06/07-07/16)	Staff	Online	4.0
0157	17h 0m / week (06/07-07/16)	Staff	Online	4.0

## Computer Science and Information Systems

### CSIS 1 COMPUTER INFORMATION SYSTEMS

0075	10h 35m / week (06/07-07/30)	Singh D	Online	3.0
0224	10h 35m / week (06/07-07/30)	Singh D	Online	3.0

### CSIS 9 PROGRAMMING FUNDAMENTALS: PYTHON

0255	10h 35m / week (06/07-07/30)	Stoykov A	Online	3.0
------	---------------------------------	-----------	--------	-----

### CSIS 10A PROGRAMMING METHODS I: JAVA

8347	10h 35m / week (06/07-07/30)	Rebold T	Online	4.0
------	---------------------------------	----------	--------	-----

### CSIS 50 MS OFFICE APPLICATIONS

8042	4h 15m / week (06/07-07/30)	Stewart M	Online	2.0
------	--------------------------------	-----------	--------	-----

### CSIS 50L MS OFFICE APPLICATIONS LAB

8043	6h 20m / week (06/07-07/30)	Stewart M	Online	1.0
------	--------------------------------	-----------	--------	-----

### CSIS 81 ITIL ESSENTIALS

0148	2h 10m / week (06/07-07/30)	Olsen, J	Online	2.0
------	--------------------------------	----------	--------	-----

### CSIS 86 NETWORK SECURITY FUNDAMENTALS/SECURITY+ PREP

0203	12h 40m / week (06/07-07/30)	Singh D	Online	3.0
------	---------------------------------	---------	--------	-----

### CSIS 98 PROJECT DEVELOPMENT

0146	8h 30m / week (06/07-07/30)	Olsen, J	Online	2.0
------	--------------------------------	----------	--------	-----

## Dental Assisting

### DNTL 100 ORIENTATION TO DENTAL CAREERS

0035	MW 8:00am-10:05am (06/07-07/28)	Hopkins Carp	Online	2.0
------	------------------------------------	--------------	--------	-----

## Early Childhood Education

### ECED 1 CHILD GROWTH AND DEVELOPMENT

0126	6h 20m / week (06/07-07/30)	Galer K	Online	3.0
------	--------------------------------	---------	--------	-----

### ECED 51 PRINCIPLES AND PRACTICES OF TEACHING YOUNG CHILDREN

0145	6h 20m / week (06/07-07/30)	Millovich	Online	3.0
------	--------------------------------	-----------	--------	-----

### ECED 55 CHILD, FAMILY, AND COMMUNITY

0028	6h 20m / week (06/07-07/30)	Thompson J	Online	3.0
------	--------------------------------	------------	--------	-----

## Economics

### ECON 2 PRINCIPLES OF ECONOMICS: MACRO

8350	8h 25m / week (06/07-07/15)	Saha S	Online	3.0
------	--------------------------------	--------	--------	-----

### ECON 4 PRINCIPLES OF ECONOMICS: MICRO

0240	TTh 12:30pm-1:30pm & 6h 25m / week (06/08-07/15)	Morgan D	Online	3.0
------	--	----------	--------	-----

**Launch Your Career**

Add Microsoft Office knowledge to your skill set with Business Skills courses at MPC!

Business Skills courses are designed to develop foundational skills that prepare you for success in the work force. Improve keyboarding skills and complete Microsoft Office Specialist Certifications in PowerPoint, Excel, and Word.

- MS Application BUSC classes lead to certification
- Complete your exam at the end of the course

SECTION	DAYS	TIME	INSTRUCTOR	ROOM	UNITS	SECTION	DAYS	TIME	INSTRUCTOR	ROOM	UNITS	SECTION	DAYS	TIME	INSTRUCTOR	ROOM	UNITS						
<b>English</b>						<b>ENGL 300 PERSONALIZED WRITING INSTRUCTION</b>						<b>Ethnic Studies</b>											
<b>ENGL 1A COLLEGE COMPOSITION</b>						<b>ENGL 351 COLLEGE READING STRATEGIES I</b>						<b>ETNC 4 MEXICAN-AMERICAN ART IN AMERICAN CULTURE</b>											
0096	8h	25m / week (06/07-07/16)	Penney	Online	3.0	8121	3h	10m / week (06/07-07/29)	Jensen K	Online	0.5	0064	8h	25m / week (06/07-07/15)	Cabrera V	Online	3.0						
0107	8h	25m / week (06/07-07/16)	Watson L	Online	3.0	<b>ENGL 352 COLLEGE READING STRATEGIES II</b>						<b>ETNC 5 AFRICAN-AMERICAN ARTS AND MUSIC IN AMERICAN CULTURE</b>											
0183	8h	25m / week (06/07-07/16)	Fetler E	Online	3.0	8132	3h	10m / week (06/07-07/29)	Jensen K	Online	0.5	0076	8h	25m / week (06/07-07/16)	Cabrera K	Online	3.0						
0207	8h	25m / week (06/07-07/16)	Penney	Online	3.0	<b>ENGL 400 ACADEMIC SUPPORT</b>						<b>ETNC 10 INTRODUCTION TO SOCIAL JUSTICE</b>											
0211	8h	25m / week (06/07-07/16)	Revivo R	Online	3.0	8133	3h	10m / week (06/07-07/29)	Jensen K	Online	0.5	0074	8h	25m / week (06/07-07/16)	Cabrera V	Online	3.0						
0251	8h	25m / week (06/07-07/16)	McMillen J	Online	3.0	<b>English As A Second Language</b>						<b>ETNC 18 LATINOS IN AMERICAN GOVERNMENT</b>											
<b>ENGL 2 ARGUMENTATIVE WRITING AND CRITICAL THINKING</b>						<b>ENSL 326 ENGLISH SKILLS FOR SUCCESS I</b>						<b>FRENCH</b>											
0037	8h	25m / week (06/07-07/16)	Wehner K	Online	3.0	0093	TWTh	9:00am-11:35am (06/08-07/15)	Brady B	Online	3.0	<b>FREN 1A ELEMENTARY FRENCH I</b>											
0040	8h	25m / week (06/07-07/16)	Eubanks K.	Online	3.0	<b>ENSL 426 ENGLISH SKILLS FOR SUCCESS I</b>						0130	MTWTh	10:00am-10:50am & 6h 35m / week (06/07-07/29)	Michael	Online	5.0						
0307	8h	25m / week (06/07-07/16)	Wehner K	Online	3.0	0094	TWTh	9:00am-11:35am (06/08-07/15)	Brady B	Online	0.0	<b>Online</b>											
8113	8h	25m / week (06/07-07/16)	Eubanks K.	Online	3.0																		

# Guarantee Your Success with FYE!

Starting a new educational journey can be exciting and overwhelming. The First Year Experience program is community-based, designed to help you be successful in your first year of college life by providing a supportive, caring environment of educational & career services.

**FYE** **FIRST YEAR EXPERIENCE**  
MONTEREY PENINSULA COLLEGE

- Early Registration
- FYE Learning Community
- Peer Mentors

- Strategies for Success in College
- Field Trips & Activities
- Bilingual Coordinators

[www.mpc.edu/fye](http://www.mpc.edu/fye)

SECTION DAYS TIME INSTRUCTOR ROOM UNITS SECTION DAYS TIME INSTRUCTOR ROOM UNITS SECTION DAYS TIME INSTRUCTOR ROOM UNITS

# READY TO WORK! PROGRAMS

BEGIN YOUR PATH TO A REWARDING CAREER THIS SUMMER AT MPC!



build new skills



earn a certificate



complete a degree

- Accounting & Business
- Automotive Technology
- Dental & Medical Assisting
- Early Childhood Education
- Networking & Security
- Nutrition & Dietetics
- Real Estate
- Sustainable Hospitality

Don't miss out, learn more at [www.mpc.edu/careereducation](http://www.mpc.edu/careereducation)

## Gender & Women's Studies

GWOS 1 INTRODUCTION TO GENDER AND WOMEN'S STUDIES				
0013	8h 25m / week (06/07-07/16)	Davis D	Online	3.0
GWOS 12 WOMEN IN UNITED STATES HISTORY				
0324	8h 25m / week (06/07-07/16)	Davis D	Online	3.0
8312	8h 25m / week (06/07-07/16)	Cabrera K	Online	3.0

## Geology

GEOL 2 PHYSICAL GEOLOGY				
0160	6h 20m / week (06/07-07/30)	Garcia Garcia	Online	3.0
0179	6h 20m / week (06/07-07/30)	Garcia Garcia	Online	3.0
GEOL 2L PHYSICAL GEOLOGY LABORATORY				
0181	MTW 2:30pm-4:35pm (06/07-07/28)	Garcia Garcia	Online	1.0
0284	MTW 5:30pm-7:35pm (06/07-07/28)	Garcia Garcia	Online	1.0

## Health

HLTH 4 HEALTHY LIVING				
0030	6h 20m / week (06/07-07/30)	Shirley K	Online	3.0

## History

HIST 12 WOMEN IN UNITED STATES HISTORY				
0325	8h 25m / week (06/07-07/16)	Davis D	Online	3.0
8152	8h 25m / week (06/07-07/16)	Cabrera K	Online	3.0
HIST 17 UNITED STATES HISTORY TO 1877				
0086	8h 25m / week (06/07-07/16)	Finell J	Online	3.0
8380	8h 25m / week (06/07-07/16)	Finell J	Online	3.0
HIST 18 UNITED STATES HISTORY FROM 1865				
0087	8h 25m / week (06/07-07/16)	Finell J	Online	3.0
0235	8h 25m / week (06/07-07/16)	Finell J	Online	3.0

## Hospitality

HOSP 21 URBAN AGRICULTURE CULINARY ARTS				
0012	M 5:00pm-5:50pm & 4h 20m / week (06/07-07/26)	Caughman J	Online	1.5
HOSP 22 FARM TO TABLE SUSTAINABLE COOKING				
0061	T 5:00pm-5:50pm & 4h 20m / week (06/10-07/29)	Caughman J	Online	1.5

## Interdisciplinary Studies

INDS 440 INTRODUCTION TO THE MONTEREY STATE HISTORICAL PARK				
8156	18h 35m / week (06/07-07/30)	Mar S	Online	0.0

## Japanese

JPNS 1A ELEMENTARY JAPANESE I				
0169	10h 35m / week (06/07-07/30)	Ogaki T	Online	5.0

SECTION	DAYS	TIME	INSTRUCTOR	ROOM	UNITS	SECTION	DAYS	TIME	INSTRUCTOR	ROOM	UNITS	SECTION	DAYS	TIME	INSTRUCTOR	ROOM	UNITS
---------	------	------	------------	------	-------	---------	------	------	------------	------	-------	---------	------	------	------------	------	-------

## Law Enforcement Training Program

For more information on these and other Law Enforcement Training courses, please visit the South Bay Regional Public Safety Training Consortium website at <http://theacademy.ca.gov/> or call (408) 229-4299.

### LETP 132 ORGANIZATIONAL LEADERSHIP

0330 MTWThF 8:00am-11:50am Vaughn L SPS104 4.0  
& MTWThF 1:00pm-6:05pm SPS104  
(06/14-07/01)

### LETP 144A P.O.S.T. INTENSIVE BASIC ACADEMY I

0123 37h 30m / week Vaughn L SNJOSE 12.0  
(04/19-07/08)

0178 MTWThF 8:00am-11:50am Vaughn L SNJOSE 11.0  
& MTWThF 1:00pm-4:30pm SNJOSE  
(04/26-07/14)

0257 MTWThF 8:00am-11:50am Vaughn L SNJOSE 11.0  
& MTWThF 1:00pm-4:20pm SNJOSE  
(04/19-07/08)

### LETP 144B P.O.S.T. INTENSIVE BASIC ACADEMY II

0078 34h 0m / week Vaughn L SNJOSE 12.0  
(05/13-08/12)

0124 36h 30m / week Vaughn L SPS201 12.0  
(05/19-08/12)

0180 MTWThF 8:00am-3:15pm Vaughn L SNJOSE 11.0  
(05/10-07/29)

### LETP 145A P.O.S.T. BASIC ACADEMY III

0303 MTWThF 8:00am-11:20am Vaughn L SNJOSE 4.0  
(04/12-06/14)

### LETP 146 BASIC POLICE REQUALIFICATION COURSE

0149 45h 20m / week Vaughn L SNJOSE 3.0  
(05/31-06/18)

### LETP 180 CITIZEN'S ACADEMY

0202 2h 25m / week Vaughn L SNJOSE 0.5  
(04/27-07/20)

### LETP 203 ROBBERY INVESTIGATIONS

0041 40h 25m / week Vaughn L SNJOSE 1.0  
(06/07-06/11)

### LETP 204 INVESTIGATION CORE

0008 MTWThF 8:00am-11:50am Vaughn L SNJOSE 2.0  
& MTWThF 1:00pm-4:50pm SNJOSE  
(06/14-06/25)

### LETP 205 OFFICER-INVOLVED SHOOTING AND DEATH INVESTIGATION

0001 39h 50m / week Vaughn L SNJOSE 1.0  
(06/28-07/02)

### LETP 207 HOMICIDE INVESTIGATION

0127 40h 15m / week Vaughn L SNJOSE 2.0  
(06/01-06/10)

0167 40h 15m / week Vaughn L SNJOSE 2.0  
(06/28-07/09)

### LETP 213 PUBLIC INFORMATION OFFICER

0262 16h 10m / week Vaughn L SNJOSE 0.5  
(07/19-07/20)

### LETP 223 DRIVER TRAINING INSTRUCTOR

0191 39h 40m / week Vaughn L SNJOSE 1.0  
(07/05-07/09)

0244 39h 40m / week Vaughn L SNJOSE 1.0  
(06/07-06/11)

### LETP 224 DRIVER AWARENESS INSTRUCTOR

0332 32h 45m / week Vaughn L SNJOSE 0.5  
(06/15-06/17)

### LETP231.95 OFFICER SAFETY - FIELD TACTICS

0193 WThF 8:00am-2:30pm Vaughn L SNJOSE 0.5  
(07/28-07/30)

0194 WThF 8:00am-2:30pm Vaughn L SNJOSE 0.5  
(06/09-06/11)

### LETP 232 ADVANCED PEACE OFFICER TRAINING

0231 39h 0m / week Vaughn L SNJOSE 0.5  
(06/29-07/01)

0306 MTWThF 8:00am-3:05pm Vaughn L SNJOSE 2.0  
(07/27-08/11)

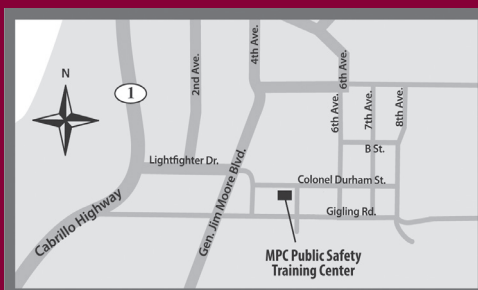
### LETP 233.4 ADVANCED S.W.A.T. TEAM LEADER

0347 48h 5m / week Vaughn L SNJOSE 0.5  
(07/05-07/09)

# ENROLL IN A FIRST RESPONDER TRAINING PROGRAM AT MPC!

Our instructors, with real world work experience in Fire, Law Enforcement, and EMT, will guide you through developing the knowledge and skills you need to become an essential worker serving your community.

[www.mpc.edu/pstc](http://www.mpc.edu/pstc)





SECTION	DAYS	TIME	INSTRUCTOR	ROOM	UNITS	SECTION	DAYS	TIME	INSTRUCTOR	ROOM	UNITS	SECTION	DAYS	TIME	INSTRUCTOR	ROOM	UNITS
<b>LETP 233.7 DEFENSIVE TACTICS INSTRUCTOR</b>																	
0159	MTWThF	8:00am-11:50am	Vaughn L	SNJOSE	2.0												
	& MTWThF	1:00pm-4:50pm		SNJOSE													
		(06/07-06/18)															
<b>LETP 234 ADVANCED OFFICER SKILLS I</b>																	
0161		22h 0m / week	Vaughn L	SNJOSE	0.5												
		(06/16-06/18)															
0163	MTWThF	8:00am-11:50am	Vaughn L	SNJOSE	1.0												
	& MTWThF	1:00pm-4:50pm		SNJOSE													
		(06/14-06/18)															
0226	MT	8:00am-4:05pm	Vaughn L	SNJOSE	0.5												
		(06/21-06/22)															
0266		40h 0m / week	Vaughn L	SNJOSE	1.0												
		(06/14-06/18)															
<b>LETP 238 TACTICAL PATROL RIFLE INSTRUCTOR</b>																	
0091		40h 15m / week	Vaughn L	SNJOSE	1.0												
		(06/21-06/25)															
0171		40h 15m / week	Vaughn L	SNJOSE	1.0												
		(07/21-07/24)															
<b>LETP240.25 SUPERVISORY UPDATE</b>																	
0260	MTW	8:00am-2:25pm	Vaughn L	SNJOSE	0.5												
		(06/21-06/23)															
<b>LETP 242 PEACE OFFICER ASSOCIATION TRAINING</b>																	
0267		33h 10m / week	Vaughn L	SNJOSE	4.5												
		(05/10-06/25)															
0268		32h 0m / week	Vaughn L	SNJOSE	0.5												
		(08/03-08/06)															
0288		3h 50m / week	Vaughn L	SNJOSE	0.5												
		(06/28-08/07)															
<b>LETP 245 FIELD TRAINING PROGRAM</b>																	
0099		38h 0m / week	Vaughn L	SNJOSE	20.0												
0102		34h 5m / week	Vaughn L	SNJOSE	17.0												
0104	MTWThF	8:00am-11:50am	Vaughn L	SNJOSE	16.5												
	& MTWThF	1:00pm-4:25pm		SNJOSE													
		(03/29-07/23)															
0119		38h 10m / week	Vaughn L	SNJOSE	20.0												
0200		36h 40m / week	Vaughn L	SNJOSE	15.0												
		(04/05-07/12)															
0329		34h 0m / week	Vaughn L	SNJOSE	4.0												
		(02/08-06/23)															
<b>LETP 246 INTERMEDIATE FIELD TRAINING</b>																	
0204		34h 0m / week	Vaughn L	SNJOSE	4.0												
		(06/21-07/26)															
<b>LETP 247 ADVANCED FIELD TRAINING</b>																	
0158		34h 0m / week	Vaughn L	SNJOSE	4.0												
		(06/17-07/22)															
<b>LETP 250 ARREST AND CONTROL/DRIVING (PSP)</b>																	
0198	MThF	8:00am-3:30pm	Vaughn L	SNJOSE	0.5												
		(04/15-06/18)															
<b>LETP 254 DISPATCH FIELD TRAINING PROGRAM</b>																	
0144		39h 30m / week	Vaughn L	SNJOSE	12.0												
		(03/29-06/11)															
<b>LETP 280.1 SUPERVISOR COURSE</b>																	
0175		39h 50m / week	Vaughn L	SNJOSE	2.0												
		(06/14-06/25)															
<b>LETP 280.2 FIELD TRAINING OFFICER</b>																	
0241		40h 0m / week	Vaughn L	SNJOSE	1.0												
		(07/19-07/23)															
<b>LETP 280.3 FIELD TRAINING OFFICER UPDATE</b>																	
0269		23h 50m / week	Vaughn L	SNJOSE	0.5												
		(07/19-07/21)															
<b>LETP 290 INSTRUCTOR DEVELOPMENT</b>																	
0177		41h 35m / week	Vaughn L	SNJOSE	1.0												
		(07/12-07/16)															
0309	MTWTh	8:00am-12:50pm		SNJOSE	1.0												
	& MTWTh	1:00pm-5:50pm		SNJOSE													
		(06/28-07/01)															

Don't worry ... we've got the support you need to succeed!

- **MPC Library**  
www.mpc.edu/library
- **Math Learning Center**  
www.mpc.edu/mlc
- **Reading & Writing Center**  
www.mpc.edu/rwc
- **STEM CEL**  
www.mpc.edu/stemcel
- **Tutoring & Academic Success Center**  
www.mpc.edu/tasc

Visit us on the Student Services Hub in Canvas!

**Learning Skills**

<b>LNSK 410 JOB READINESS</b>				
0138	28h 15m / week	Jaros R	NBI	0.0
	(06/07-07/30)			
0139	28h 15m / week	Phillips SA	HOPE	0.0
	(06/07-07/30)			

**Library Services**

<b>LIBR 50 INTRODUCTION TO LIBRARY AND RESEARCH SKILLS</b>				
0077	8h 25m / week	Easton	Online	1.0
	(06/07-07/16)			
0079	8h 25m / week	Tozier G	Online	1.0
	(06/07-07/16)			
0080	8h 25m / week	Easton	Online	1.0
	(06/07-07/16)			

SECTION	DAYS	TIME	INSTRUCTOR	ROOM	UNITS	SECTION	DAYS	TIME	INSTRUCTOR	ROOM	UNITS	SECTION	DAYS	TIME	INSTRUCTOR	ROOM	UNITS
---------	------	------	------------	------	-------	---------	------	------	------------	------	-------	---------	------	------	------------	------	-------

## Linguistics

### LING 10 FOUNDATIONS OF LANGUAGE

0063 11h 20m / week Abend Online 3.0  
(06/07-07/16)

### LING 15 INTRODUCTION TO LINGUISTICS

8005 8h 25m / week Abend Online 3.0  
(06/07-07/16)

### LING 25 INTRODUCTION TO LANGUAGE AND GENDER

0301 8h 25m / week Abend Online 3.0  
(06/07-07/16)

## Mathematics

### MATH 10 MATHEMATICS FOR GENERAL EDUCATION

0042 11h 20m / week Philley G Online 4.0  
(06/07-07/16)

### MATH 13 PRE-CALCULUS

0242 12h 10m / week Bishop E Online 5.0  
(06/07-07/23)

8209 12h 10m / week Northup C Online 5.0  
(06/07-07/23)

### MATH 16 ELEMENTARY STATISTICS

0210 11h 20m / week Pickering Online 4.0  
(06/07-07/16)

0219 11h 20m / week Spence L Online 4.0  
(06/07-07/16)

0229 11h 20m / week Acevedo-Arre Online 4.0  
(06/07-07/16)

8212 11h 20m / week Cristobal Online 4.0  
(06/07-07/16)

### MATH 20A CALCULUS WITH ANALYTIC GEOMETRY I

8216 MTWTh 1:00pm-2:30pm Riordan E Online 4.0  
& 5h 10m / week Online  
(06/07-07/22)

8217 12h 10m / week Cristobal Online 4.0  
(06/07-07/23)

### MATH 20B CALCULUS WITH ANALYTIC GEOMETRY II

8218 MTWTh 10:00am-10:50am Iwamoto L Online 4.0  
& 8h 15m / week Online  
(06/07-07/22)

### MATH 260 PRE-STATISTICS

0029 TTh 8:00am-9:30am Lopez D Online 5.0  
& 8h 30m / week Online  
(06/07-07/22)

### MATH 263 INTERMEDIATE ALGEBRA AND COORDINATE GEOMETRY

8227 12h 10m / week Nguyen T Online 5.0  
(06/07-07/23)

8228 12h 10m / week Bishop E Online 5.0  
(06/07-07/23)

### MATH 440 SUPERVISED TUTORING: MATHEMATICS

8231 16h 0m / week Lake E TBD 0.0  
(06/07-07/23)

## Medical Assisting

### MEDA 100 INTRODUCTION TO HEALTH CAREERS

0162 2h 45m / week Bell M Online 1.0  
(06/07-07/16)

### MEDA 105 MEDICAL TERMINOLOGY

0150 8h 25m / week Bell M Online 4.0  
(06/07-07/30)

0236 8h 25m / week Bell M Online 4.0  
(06/07-07/30)

### MEDA 130 MEDICAL ASSISTING EXTERNSHIP

8236 22h 25m / week Bell M CLINIC 3.0  
(06/07-07/30)

## Music

### MUSI 1 MUSIC APPRECIATION

0024 6h 20m / week Durst A Online 3.0  
(06/07-07/30)

### MUSI 50A BEGINNING PIANO I

8241 5h 35m / week Durst A Online 1.0  
(06/07-07/16)

### MUSI 50B BEGINNING PIANO II

0046 5h 35m / week Durst A Online 1.0  
(06/07-07/16)

### MUSI 50C INTERMEDIATE PIANO

0069 5h 35m / week Durst A Online 1.0  
(06/07-07/16)

## Nursing

### NURS 65 NURSING ROLE TRANSITION

0155 17h 0m / week Hanna Online 3.0  
& Kragelund, Rondez and Staff  
(06/28-07/15)

### NURS 70 BEGINNING SUPERVISED NURSING CLINICAL EXPERIENCE

0166 20h 20m / week Kragelund TBD 2.0  
& Rondez, Sullivan, and Staff  
(06/28-07/30)

### NURS 100 PHARMACOLOGY FOR NURSING

0151 TTh 9:00am-1:05pm Trapl C Online 2.0  
(06/15-07/22)

8244 TTh 9:00am-1:05pm Trapl C Online 2.0  
(06/15-07/22)

### NURS 150 NURSING PROGRAM READINESS

0073 14h 10m / week Hanna Online 1.5  
(06/07-06/25)

0131 14h 10m / week Hanna Online 1.5  
(06/07-06/25)

0189 14h 10m / week Hanna Online 1.5  
(06/07-06/25)

### NURS 201 PREPARATION FOR REGISTERED NURSE LICENSURE EXAM

0085 30h 5m / week Bingaman Online 0.5  
(06/07-06/11)

### NURS 264 BASIC ARRHYTHMIA AND CORONARY CARE

8250 MWF 9:00am-1:05pm Trapl C Online 1.0  
(06/21-06/28)

## Nutrition And Food

### NUTF 1 NUTRITION

0072 6h 20m / week Lord V Online 3.0  
(06/07-07/30)

0133 6h 20m / week Lord V Online 3.0  
(06/07-07/30)

0232 6h 20m / week Navarro D Online 3.0  
(06/07-07/30)

## Older Adult Program

### ART 431 DRAWING AND COMPOSITION

8324 6h 20m / week Bispo Online 0.0  
(06/07-07/28)

8325 6h 20m / week Bispo Online 0.0  
(06/08-07/29)

### ORNH 425 SUCCESSFUL GARDENING TECHNIQUES

8329 5h 35m / week Hofmann J Online 0.0  
(06/07-07/14)

## Personal Development

### PERS 10 INTRODUCTION TO COLLEGE SUCCESS

0174 8h 25m / week De Soto A Online 1.0  
(06/07-06/18)

SECTION	DAYS	TIME	INSTRUCTOR	ROOM	UNITS	SECTION	DAYS	TIME	INSTRUCTOR	ROOM	UNITS	SECTION	DAYS	TIME	INSTRUCTOR	ROOM	UNITS
---------	------	------	------------	------	-------	---------	------	------	------------	------	-------	---------	------	------	------------	------	-------

# Enroll in a MIND BLOWING Class Today!

- Anthropology
- Economics
- Ethnic Studies
- Gender & Women's Studies
- History
- Political Science
- Psychology
- Sociology

Social Science classes meet GE requirements for most colleges and universities

## Philosophy

### PHIL 2 INTRODUCTION TO PHILOSOPHY

8253 6h 20m / week Provost Online 3.0  
(06/07-07/30)

### PHIL 4 MORAL ISSUES

0056 6h 20m / week Provost Online 3.0  
(06/07-07/30)

### PHIL 10 INTRODUCTION TO CRITICAL THINKING

8389 6h 20m / week Provost Online 3.0  
(06/07-07/30)

## Physical Education

### PHED 12B COMPETITIVE SWIMMING I

0043 MTWTh 6:30pm-8:35pm Osgood S POOL 1.0  
& MTWTh 6:30pm-8:35pm Smith A POOL  
(06/07-07/29)

### PHED 12C COMPETITIVE SWIMMING II

0044 MTWTh 6:30pm-8:35pm Osgood S POOL 1.0  
& MTWTh 6:30pm-8:35pm Smith A POOL  
(06/07-07/29)

### PHED 12D COMPETITIVE SWIMMING III

0045 MTWTh 6:30pm-8:35pm Osgood S POOL 1.0  
& MTWTh 6:30pm-8:35pm Smith A POOL  
(06/07-07/29)

### PHED 12E COMPETITIVE SWIMMING IV

0047 MTWTh 6:30pm-8:35pm Osgood S POOL 1.0  
& MTWTh 6:30pm-8:35pm Smith A POOL  
(06/07-07/29)

### PHED 90 INDEPENDENT STUDY

0140 5h 35m / week Spiering PE201 0.5  
(06/14-07/22)

0143 5h 35m / week O'Hare PE201 0.5  
(06/14-07/22)

## Physical Fitness

### PFIT 10A BEGINNING WEIGHT TRAINING

8263 3h 10m / week Palmer R Online 0.5  
(06/07-07/30)

### PFIT 17A YOGA I

8269 4h 15m / week Smith A Online 0.5  
(06/07-07/30)

### PFIT 17B YOGA II

0186 4h 15m / week Smith A Online 0.5  
(06/07-07/30)

### PFIT 17C YOGA III

0048 4h 15m / week Smith A Online 0.5  
(06/07-07/30)

### PFIT 22A FITNESS THROUGH SWIMMING I

0055 MTWTh 11:30am-1:35pm Osgood S POOL 1.0  
& MTWTh 11:30am-1:35pm Smith A POOL  
(06/07-07/29)

### PFIT 22B FITNESS THROUGH SWIMMING II

0057 MTWTh 11:30am-1:35pm Osgood S POOL 1.0  
& MTWTh 11:30am-1:35pm Smith A POOL  
(06/07-07/29)

### PFIT 22C FITNESS THROUGH SWIMMING III

0058 MTWTh 11:30am-1:35pm Osgood S POOL 1.0  
& MTWTh 11:30am-1:35pm Smith A POOL  
(06/07-07/29)

### PFIT 22D FITNESS THROUGH SWIMMING IV

0059 MTWTh 11:30am-1:35pm Osgood S POOL 1.0  
& MTWTh 11:30am-1:35pm Smith A POOL  
(06/07-07/29)

## Political Science

### POLS 1 INTRODUCTION TO AMERICAN GOVERNMENT AND POLITICS

0223 6h 20m / week Blanchard L Online 3.0  
(06/07-07/30)

8279 8h 25m / week Banks Online 3.0  
(06/07-07/15)

8281 6h 20m / week Van Zwaluwen Online 3.0  
(06/07-07/30)

### POLS 4 INTRODUCTION TO INTERNATIONAL RELATIONS

0005 8h 25m / week Blanchard L Online 3.0  
(06/07-07/16)

SECTION DAYS TIME INSTRUCTOR ROOM UNITS SECTION DAYS TIME INSTRUCTOR ROOM UNITS SECTION DAYS TIME INSTRUCTOR ROOM UNITS

### Psychology

PSYC 1 GENERAL PSYCHOLOGY	
0128	MTWTh 9:00am-11:05am Lachman L Online 3.0 (06/07-07/15)
0190	8h 25m / week Kotecki A Online 3.0 (06/07-07/16)
0221	6h 20m / week Austin T Online 3.0 (06/07-07/30)
0253	8h 25m / week Kotecki A Online 3.0 (06/07-07/16)
8286	8h 25m / week Kotecki A Online 3.0 (06/07-07/16)
PSYC 25 LIFESPAN DEVELOPMENT	
0084	8h 25m / week Nicolaidis C Online 3.0 (06/07-07/16)
0187	8h 25m / week Nicolaidis C Online 3.0 (06/07-07/16)
0222	8h 25m / week Nicolaidis C Online 3.0 (06/07-07/16)
0250	8h 25m / week Whitworth R Online 3.0 (06/07-07/16)
0323	8h 25m / week Whitworth R Online 3.0 (06/07-07/16)

### Real Estate

REAL 56 REAL ESTATE PROPERTY MANAGEMENT	
8408	6h 20m / week Banks Online 3.0 (06/07-07/30)

### Sociology

SOC 1 INTRODUCTION TO SOCIOLOGY	
0118	8h 25m / week White M Online 3.0 (06/07-07/16)
8294	8h 25m / week Chap M Online 3.0 (06/07-07/16)
SOC 17 INTRODUCTION TO CRIME AND DEVIANCE	
0009	8h 25m / week Maynard, G Online 3.0 (06/07-07/16)
SOC 40 SOCIOLOGY OF MARRIAGES AND FAMILIES	
8297	8h 25m / week Zaleha B Online 3.0 (06/07-07/15)

### Spanish

SPAN 1A ELEMENTARY SPANISH I	
0062	MTWThF 9:30am-10:20am Sanchez Sulc Online 5.0 & 7h 10m / week Online (06/07-07/23)
0185	MTWTh 6:00pm-7:15pm Del Pozo J Online 5.0 & 6h 10m / week Online (06/07-07/23)
SPAN 1SA ELEMENTARY SPANISH FOR SPANISH SPEAKERS I	
0039	TTh 11:00am-12:30pm Cisneros S Online 5.0 & 8h 30m / week Online (06/07-07/22)
0237	12h 10m / week Pico Renteri Online 5.0 (06/14-07/30)
SPAN 6 HISPANIC CINEMA	
0147	TTh 6:00pm-7:15pm Borja, F Online 3.0 (06/08-07/15)

### Speech Communication

SPCH 1 PUBLIC SPEAKING	
0007	TWTh 11:00am-1:35pm Staff Online 3.0 (06/08-07/15)
0156	8h 25m / week Cardinale M Online 3.0 (06/07-07/16)
0192	8h 25m / week Baumbach J Online 3.0 (06/07-07/16)
0238	8h 25m / week Baumbach J Online 3.0 (06/07-07/16)
0239	8h 25m / week Cardinale M Online 3.0 (06/07-07/16)
SPCH 2 SMALL GROUP COMMUNICATION	
0038	8h 25m / week Sturt Online 3.0 (06/07-07/16)

### Theatre Arts

THEA 5 FILM APPRECIATION	
0115	6h 20m / week Eck T Online 3.0 (06/07-07/30)
0116	6h 20m / week Eck T Online 3.0 (06/07-07/30)

### World Languages

The following languages are offered this term. For class information, please find them by alphabetical order throughout this Schedule of Classes.

**FRENCH**  
**JAPANESE**  
**SPANISH**



Get your **degree faster** by creating your **educational plan**

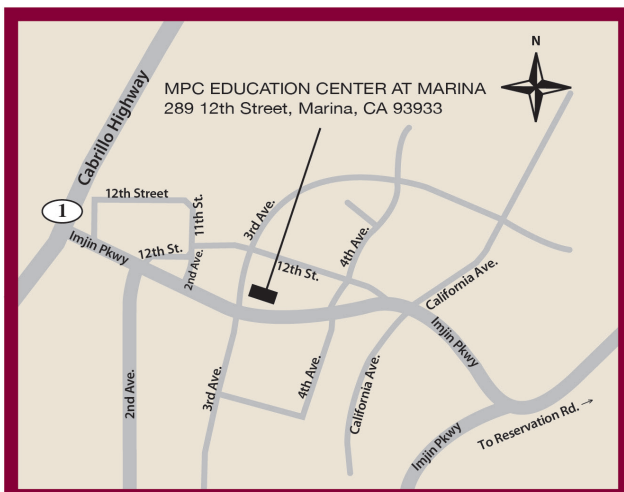
Connect with a counselor today!

[www.mpc.edu/counseling](http://www.mpc.edu/counseling)

**MPC** | EDUCATION CENTER AT MARINA  
MONTEREY PENINSULA COLLEGE



Conveniently located for residents of Northwestern Monterey County, MPC's Education Center at Marina offers a variety of courses for transfer, career technical education, and personal enrichment. On-site services currently available include access to study space and internet, student ID and Library cards, student food pantry, workshops, and other activities. Visit [mpc.edu/marina](http://mpc.edu/marina), call (831) 646-4850, or email [marinaedcenter@mpc.edu](mailto:marinaedcenter@mpc.edu) to learn more!



MARINA / SEASIDE CAMPUS LOCATIONS	MA MPC Education Center at Marina 289 12th Street, Marina	SPS MPC Public Safety Training Center 2642 Colonel Durham Street, Seaside
<b>OFF – CAMPUS LOCATIONS</b>		
<b>AP</b> Ariel Theatrical 320 Main Street, Salinas <b>BHB</b> Bayonet and Black Horse Golf Course 1 McClure Way, Seaside <b>BPH</b> Bay Park Hotel 1425 Munras Ave., Monterey <b>BSFB</b> Big Sur Volunteer Fire Brigade Pfeiffer Ridge Rd., Big Sur <b>CCLK</b> Central Coast Lighthouse Keepers Pt. Sur State Park, Big Sur <b>CFPD</b> Cachagua Fire Protection District 37200 Nason Rd., Carmel Valley <b>CHS</b> Carmel High School 3600 Ocean Ave., Carmel <b>CLINIC</b> Health Facility Clinic See Program Coordinator <b>HFD</b> Hanford Fire Department 350 West Grangeville Blvd., Hanford	<b>HOPE</b> Hope Building 1663 Catalina St., Sand City <b>HVMS</b> Hidden Valley Music Seminars 88 West Carmel Valley Road, Carmel Valley <b>MCFB</b> Mid Coast Fire Brigade 38841 Palo Colorado Rd., Carmel <b>MCRFPD</b> Monterey County Regional Fire Protection District 19900 Portola Dr., Salinas <b>MFD</b> Monterey Fire Department Pacific & Madison, Monterey <b>MHS</b> Monterey High School 101 Herrmann Dr., Monterey <b>MRNHS</b> Marina High School 2995 Rendova Rd., Marina <b>MTC</b> Mott Training Center 837 Asilomar Blvd, Pacific Grove <b>MTCA</b> Mott Training Center Annex 2211 Garden Rd., Shop C, Monterey	<b>NBI</b> North Bay Industries 1 University Circle, Monterey <b>OC</b> Oldemeyer Center 986 Hilby Ave., Seaside <b>PGHS</b> Pacific Grove High School 615 Sunset Dr., Pacific Grove <b>PRT</b> Pacific Repertory Theater Monte Verde & 8th, Carmel <b>SALLYG</b> Sally Griffin Active Living Center 700 Jewell Ave., Pacific Grove <b>SFD</b> Seaside Fire Department 1635 Broadway Ave., Seaside <b>SHS</b> Seaside High School 2200 Noche Buena, Seaside <b>SNJOSE</b> South Bay Regional Public Safety Training Consortium 3095 Yerba Buena Rd., San Jose

## Directory of Student Services

**Academic Council Petitions**  
(831) 645-1377

**Access Resource Center**  
(831) 646-4070

**Admissions & Records**  
(831) 646-4002 / admissions@mpc.edu

**Articulation**  
(831) 646-3013

**Assessment Office**  
(831) 646-4027 / assessment@mpc.edu

**Associated Students of MPC Office**  
(831) 646-4013

**Bookstore**  
(831) 657-4680

**CARE / CalWorks**  
(831) 646-4248

**Career / Transfer Resource Center**  
(831) 645-1336

**Certificate Requirements**  
(831) 646-4020

**Clubs, Student**  
(831) 646-4192

**Counseling Office**  
(831) 646-4020

**Dean, Student Services**  
(831) 645-1377

**Dean, Student Services**  
(831) 646-4155

**Dean, Student Services**  
(831) 646-4220

**Dual Enrollment**  
(831) 646-4282 / dualenrollment@mpc.edu

**Early Childhood Education Lab School**  
(831) 646-4066

**Education Center at Marina**  
(831) 646-4850 / marinaedcenter@mpc.edu

**EOPS Office**  
(831) 646-4247

**Financial Aid** (Student Financial Services)  
(831) 646-4030

**Graduation Requirements**  
(831) 646-4020

**Health Services**  
(831) 646-4017

**Sandy Nee**  
Student Services Building

**Jacque Evans**  
Student Services Building

Student Services Building

**He Seon Ihn**  
Student Services Building

Student Services Building

**Julie Osborne**  
Student Center

**Bookstore Manager**  
Student Center

**Kacey Giammanco**  
Student Services Building

**Sudeshna Nand**  
General Classrooms

**Counselors**  
Student Services Building

**Julie Osborne**  
Student Center

**Alethea De Soto**  
Student Services Building

**LaKisha Bradley**  
Student Services Building

**Eric Ogata**  
Student Services Building

**Wendy Bates**  
Athletics / Kinesiology

**Jeff Procvie**  
Early Childhood Education Lab School

**Eric Ogata**  
Student Services Building

Student Services Building

**Counselors**  
Student Services Building

**Leann Contapay**  
Student Services Building

**Housing Information**  
(831) 646-4192

**International Students**  
(831) 645-1380

**Math / Science Upward Bound**  
(831) 645-1306

**Parking Permits Purchase**  
(831) 646-4002

**Policies and Regulations, Student**  
(831) 646-4155

**Probation and Disqualification**  
(831) 645-1377

**Registration**  
(831) 646-4002 / admissions@mpc.edu

**Residency**  
(831) 646-4002 / admissions@mpc.edu

**Scholarships**  
(831) 646-4030

**Security**  
(831) 646-4099 / (831) 646-4292

**Sexual Harrassment / Sexual Misconduct**  
(831) 646-4850 / titleIX@mpc.edu

**Student Accounts**  
(831) 646-4046

**Student Activities**  
(831) 646-4192

**Student Center**  
(831) 646-4192

**Student Conduct**  
(831) 646-4155

**Student Employment**  
(831) 646-4195

**Student Equity & Achievements**  
(831) 646-4261 / seaprogram@mpc.edu

**Title IX**  
(831) 646-4850 / titleIX@mpc.edu

**TRIO Student Support Services (SSS)**  
(831) 646-4246

**Transcripts**  
(831) 646-4002 / admissions@mpc.edu

**Upward Bound**  
(831) 646-4089

**Veterans Assistance Office**  
(831) 646-4025 / (831) 646-4020

**Julie Osborne**  
Student Center

**Alethea DeSoto**  
Student Services Center

**Jasmine Do**  
Student Services Building

**Online via WebReg**

**VP of Student Services**  
Administration Building

**Sandy Nee**  
Student Services Building

**Admissions & Records**  
Student Services Building

**Admissions & Records**  
Student Services Building

**Student Financial Services**  
Student Services Building

Student Center

**Kayla Valentine**  
Human Resources

**Fiscal Services**  
Administration Building

**Julie Osborne**  
Student Center

**Julie Osborne**  
Student Center

**VP of Student Services**  
Administration Building

**Lien Nguyen**  
General Classrooms

**LaKisha Bradley**  
Student Services Building

**Kayla Valentine**  
Human Resources

**Grace Anongchanya**  
Student Services Building

**Admissions & Records**  
Student Services Building

**Sandra Washington**  
Student Services Building

**Eileen Crutchfield**  
Student Center

# MPC FOUNDATION MONTEREY PENINSULA COLLEGE

Thank you Business Partners for supporting MPC students!



1st Capital Bank

Hayashi Wayland

Vanderbilt CPAs PC

Cardinale Moving & Storage  
Lozano Smith, LLP

Dole Fresh Vegetables  
Mahoney & Associates  
Monterey Plaza Hotel

Kennedy, Archer & Giffen  
McGilloway, Ray, Brown & Kaufman



## Residential Customer

ECRWSS

- ADM ADMINISTRATION**
- Fiscal Services
  - Human Resources
  - Information Center
  - Information Technology
  - Marketing & Communications
  - Mail Room
  - MPC Foundation
  - President's Office
  - V.P., Academic Affairs
  - V.P., Administrative Services
  - V.P., Student Services

**AC ART CERAMICS**

**AD ART DIMENSIONAL**

- Jewelry & Metal Arts
- Sculpture

**AG ART GALLERY**

**AMP AMPHITHEATER**

**AS ART STUDIO**

- Creative Arts Division Office
- Student Art Center

**AT AUTOMOTIVE TECHNOLOGY**

**BMC BUSINESS MATH & COMPUTING**

- Business & Computer Science Division Office
- Business Skills Center
- Cooperative Work Experience Office
- Internship Program Office
- Math Learning Ctr.

**DA DANCE & ADAPTIVE PE**

- Adaptive Physical Education

**ECE EARLY CHILDHOOD EDUCATION**

- Early Childhood Laboratory School

**FA FACILITIES**

- Custodial Services
- Grounds
- Maintenance
- Shipping / Receiving

**FC FAMILY & CONSUMER SCIENCE**

- FC Kitchen

**FTC FITNESS / TRAINING CENTER**

**GA GRAPHIC ARTS**

**GC GENERAL CLASSROOMS**

- Career Transfer Resource Center
- El Centro
- Job Center

**GYM GYMNASIUM / KINESIOLOGY**

- Athletic Training
- Equipment Room
- Gymnasium
- Locker Rooms
- Kinesiology Division Office

**HU HUMANITIES**

**HSS HUMANITIES / SUPPORT SERVICES**

- Access Resource Center (ARC)
- High Tech Center
- Humanities Division Office

**IC INTERNATIONAL CENTER**

**LF LECTURE FORUM**

- Marine Advanced Technology Education (MATE) Center
- Print Shop

**LTC LIBRARY & TECHNOLOGY CENTER**

- English & Study Skills Center
- English as a Second Language (ESL) Lab
- Instructional Technology Dept.
- Leon Stutzman Room
- Online Education
- Reading Center
- Sam Karas Room
- STEM CEL Tutoring



**P** Public Parking All vehicles must have a parking pass. Buy one at Fiscal Services in: **ADM**  
**P** Staff Parking  
**I** Information  
**+** First Aid / Nurse  
**S** Security Office 646-4099  
**⚡** Automated External Defibrillator (AED)  
**R** Restrooms  
**R** Gender-Inclusive Restroom  
**L** Lactation Room  
**♿** Accessibility / Elevator  
**Wi-Fi** Campus has Free Wi-Fi

**LS LIFE SCIENCES**

- Life Science Division Office

**MU MUSIC**

- Listening Center
- Music Hall

**MV MODULAR VILLAGE**

- T300
- T500
- T600

**NU NURSING**

- Nursing Division Office

**PS PHYSICAL SCIENCE**

- Physical Science Division Office

**SS SOCIAL SCIENCE**

- Social Science Division Office
- Snack Shack

**SC STUDENT CENTER**

- Almaden Room
- Associated Students of MPC (ASMPMPC)
- Bookstore
- Cafeteria
- Costanoan Room
- Housing Information Center
- Student Activities Office
- TRIO Learning Center
- Veteran's Resource Center
- Security: 646-4099**

**STS STUDENT SERVICES**

- Access Resource Center
- Admissions & Records
- Assessment Center
- CalWorks
- Cooperative Agencies Resources for Education (CARE)
- Counseling
- Dean of Student Services

**STS STUDENT SERVICES CONTINUED**

- Extended Opportunity Programs & Services (EOPS)
- First Aid & Emergency Care**
- International Student Programs
- Residency Info
- Student Financial Services
- Student Health & Psychological Services
- Testing Center (ARC)
- TRIO Offices
- Student Equity & Achievement

**T100 TEMPORARY BUILDING**

- Planning, Research & Institutional Effectiveness (PRIE)

**TH THEATER**