



MPC IS YOUR \$MART CHOICE

**Monterey Peninsula
College Governing Board
of Trustees:**

- Ms. Yuri Anderson, Chair - Area 2
- Dr. Loren Steck, Vice Chair - Area 5
- Ms. Debeliah "Debbie" Anthony,
Trustee - Area 4
- Ms. Elizabeth "Libby" Downey,
Trustee - Area 3
- Ms. Rosalyn Green, Trustee - Area 1
- Ms. Tenisha Hill, Student Trustee

Monterey Peninsula College is a community college accredited by the Western Association of Schools and Colleges. The college is open to high school graduates and all others 18 years of age or older who may profitably pursue a course of study. Students in grades 6-12 may attend with written approval from their school principal and their parent(s) prior to registering. Students in grades 6-8 need additional approval from the Dean of Student Services.

**Call Admissions & Records at
(831) 646-4002 or email
admissions@mpc.edu
for registration information**

All Monterey Peninsula College written publications will be made available in alternative formats (print, Braille, audiotape, or e-text). Requests for alternate media should be made to Access Resource Center at (831) 646-4070.

MPC Smoking Policy:
The use of tobacco – to include smoking and/or chewing any form of tobacco – is only permitted in designated parking lots.

(MPC Board Policy #3570)

President's Welcome

Fall 2021 at Monterey Peninsula College

Welcome to Monterey Peninsula College (MPC), a vibrant institution of higher learning. MPC offers exceptional educational opportunities at our campus in Monterey, our Education Center at Marina, our Public Safety Training Center in Seaside, and online.

With a high-quality education, you can transform your personal and professional life. Whether your goal is to get a head start on your college education, earn a certificate or an associate degree, transfer to a four-year university, update your skills, train for a new career, or enrich your personal life, MPC can help you achieve it.

Wherever you are on your educational path, MPC will help you take the next step toward success.

David Martin
Superintendent/President

Otoño 2021 en Monterey Peninsula College

Bienvenidos al Colegio de la Península de Monterey (MPC), un colegio vibrante de educación. MPC ofrece oportunidades excepcionales de educación en nuestras localidades en Monterey, Centro Educativo de Marina, Centro de Entrenamiento de Seguridad Pública, y en línea.

Con una educación de alto nivel, tú puedes transformar tu vida personal y profesional. Si tu meta es avanzar tu educación, recibir un certificado, un diploma asociado, transferirte a una universidad, mejorar tus habilidades, recibir entrenamiento para una nueva carrera, o enriquecer tu vida personal, MPC está aquí para ayudarte a obtenerlo.

En lo que necesites, MPC te ayudará a tomar el siguiente paso a tu éxito.



Attend College Tuition Free with the MPC Promise

Monterey Peninsula College is proud to offer the *MPC Promise*, a free in-state tuition program that will cover all college enrollment fees, for all first-time, 1st and 2nd year students attending full time.

Visit www.mpc.edu/promise to learn more about the MPC Promise.

Calendar of Important Dates

Fall Session 2021

August 13 to December 10, 2021

April 21	Priority registration begins
May 3	Open registration
August 12	Last day to register through WebReg without an add code
August 13	Classes begin
August 13 - 29	Late registration – add codes required for registration
August 28	Last day to drop semester-length courses and be eligible for a refund
August 29	Last day to add a semester-length course with an add code
August 29	Last day to drop semester-length courses without a “W” grade
August 30	Census Day
September 6	HOLIDAY: Labor Day Observance
September 11	Last day to request pass/no pass grade option for semester-length courses
November 1	Graduation application deadline
November 10	Last date to drop semester-length courses and receive “W” grade
November 11	HOLIDAY: Veterans Day Observance
November 25-27	HOLIDAY: Thanksgiving
December 6 - 10	Final Examinations
December 10	End of semester
December 23 - January 1	Holiday: Winter Break

Information: (831) 646-4000

Admission & Records:

(831) 646-4002 or
admissions@mpc.edu

TTY: (831) 645-1319

Web Registration (WebReg):

www.mpc.edu

Campus Security:

(831) 646-4099

Counseling:

(831) 646-4020

Assessment Center:

(831) 646-4027

Child Development Center:

(831) 646-4066

Bookstore:

(831) 657-4680

Library:

(831) 646-4095

Marina Education Center:

(831) 646-4850

MPC Public Safety

Training Center:

(831) 646-4240

Financial Aid:

(831) 646-4030

Schedule Changes

Adds and/or Drops can be made by WebReg 24 hours a day online.

If course registration is not completed before the term begins, students must attend class, request an add code from the instructor and use WebReg to register during the late registration period.

STUDENT SERVICES:

Admissions & Records Office
(831) 646-4002
www.mpc.edu/admissions

When to Register

Registering for MPC classes is easy! It is recommended that you register as early as possible to get the classes that you want.

Web Registration (WebReg) at www.mpc.edu open 24 hours per day.
Computers and WebReg assistance available in the Student Services Building.

Priority Registration

CONTINUING STUDENTS are students enrolled at MPC during Spring 2021.

RETURNING STUDENTS are students who enrolled at MPC previously, but not in Spring 2021.

NEW AND NEW TRANSFER STUDENTS are students who have never enrolled at MPC.

DUAL ENROLLMENT STUDENTS are students who are currently in grades 6-12.

PRIORITY	GROUP	PRIORITY DATE
Priority 1	Active Military, Veterans, Foster Youth, Homeless Youth, ARC, EOPS & CalWORKS. Students must be either continuing MPC students in good standing ¹ (up to 99.9 units ²) or fully matriculated ³ if new or returning	April 21
Priority 2	Student Athletes, ASMPC Officers and students in the following programs: First Year Experience, Teacher Pathway Program, Umoja, and TRIO. Students must be either continuing MPC students in good standing ¹ (up to 99.9 units ²) or fully matriculated ³ if new or returning	April 23
Priority 3	Continuing MPC students in good standing ¹ with 30.0-99.9 units in progress and on file	April 26
Priority 4	Continuing MPC students in good standing ¹ with 0.0-29.5 units in progress and on file	April 28
Priority 5	New fully matriculated ³ students	April 30
Open Registration	Open Registration for all other New and Returning students, dual enrolled students (grades 6-12), and continuing MPC students with 99.9+ units in progress and on file	May 3

¹ **In good standing:** student who is NOT on academic or progress dismissal or who is not on any probation for the last two consecutive semesters (Foster Youth will not lose priority and need to be manually adjusted)

² **100 unit:** once a student reaches 100 units, he/she loses priority limit includes only degree applicable units (MPC courses numbered 1-299)

³ **Fully Matriculated:** Student has completed Assessment, Orientation, and has an Education Plan on file for the term priority registration is for.

Late Registration

August 13, 2021 - August 29, 2021

Attend the first class, request an Add Code from the instructor and register using WebReg. Need assistance?

Please visit Admissions & Records in the Student Services Building or call **(831) 646-4002**.

Please note: There are many drawbacks to registering late. Classes would have already begun; the classes you want may already be filled; and counseling will be limited. So register early!

Steps for New Students

New students should complete each of the following steps in order to be cleared for registration.

STEP 1. APPLICATION

Complete application online at www.mpc.edu

1. Click on “**Apply for Admission**”
2. Follow the instructions on CCCApply to submit an application.

STEP 2. FINANCIAL AID (OPTIONAL)

Students who need assistance paying their fees are encouraged to submit the FAFSA (fafsa.ed.gov) or DREAM Act (dream.csac.ca.gov) application before they register for classes.

See page 8 for more Financial Aid information.

STEP 3. ASSESSMENT & PLACEMENT

Students receive English & math placement recommendations within five minutes of completing the Application for Admission. Recommendations can be adjusted using Guided Self Placement and answering questions regarding comfort levels with the concepts and skills necessary for success in English as a Second Language and transfer-level English and/or math coursework. Please see our website for the most current information and procedures. See assessment information on our website at

www.mpc.edu/assessment or call (831) 646-4027.

STEP 4. ORIENTATION

Choose one of the following:

- A) Register for PERS 10, **OR**
- B) Complete the orientation online or in person. Please review the following website: www.mpc.edu/orientation or call (831) 646-4845.

STEP 5. COUNSELING/ADVISEMENT (EDUCATION PLAN)

Choose one of the following:

- A) Complete the Education Plan online at: www.mpc.edu/counseling, **OR**
- B) Complete the Education Plan with a counselor. Call (831) 646-4020 for an appointment or make your appointment online through WebReg.

STEP 6. REGISTRATION

Register for classes online, via WebReg at www.mpc.edu

Your **ONLINE** education is just a *click away!*

MPC has something for *everyone* and online classes for *all* types of learners!

Looking for convenience and flexibility to fit a busy schedule?
- Learn on your own time with an asynchronous class.

Looking for more human interaction and engagement?
- Try a synchronous class. Meet online on a specific schedule just like you do on campus!

Launch *your* future by enrolling in one of MPC's engaging online courses today!

www.mpc.edu/onlinecourses



How to Register

Who may use WebReg

Continuing Students: Students who enrolled at MPC for the previous term. (Students in grades 6-12 are always considered new and must always submit an Application for Admission and an approved Dual Enrollment Form.

Returning Students: Students who enrolled at MPC before, but not the previous term.

New and Transfer Students: Students who have submitted their Application for Admission. Read the information about the Step Program in this schedule or contact the Counseling Department.

WebReg Clearance

Students who are not paying their own fees: Students included in this group are those using Vocational Rehabilitation (Chapter 31), VA CalVet, State Department of Rehabilitation, etc. Students are responsible for all fees unless appropriate forms are received by the Admissions & Records Office within the first two weeks of the term

Students who have been dismissed from Monterey Peninsula College: Students must petition for readmission through the Academic Council. Check your petition status on WebReg 48 hours after Academic Council review (2nd and 4th Tuesdays).

Welcome to WebReg (Web Registration) www.mpc.edu

Registration in more than 18 units: Students must have counselor approval if registering for more than 18 units in a semester.

U.S. Military Tuition Assistance: Once the approved Tuition Assistance form is submitted to the Admissions & Records Office, registration may be permitted.

U.S. Military Dependents using nonresident free exemption: Signatures are required on the U.S. Military Dependent Residence Statement every semester/session of enrollment. Registration fees are the responsibility of the student unless the form is submitted to the Admissions & Records Office within the first two weeks of the term.

International Students: All students on F-1 or M-1 visas and students not possessing permanent resident visas: Approval from International Student Program office is required.

6th-12th Grade Students: Students in grades 6-12 and who are at least 12 years of age must complete an Application for Admission and a Dual Enrollment Form. Registration is permitted after both forms are completed and submitted to the Admissions & Records Office. Students in grades 6-8 must have additional approval from the Dean of Student Services. Call (831) 645-1377 to schedule an appointment. No approvals will be granted after the term begins.

Fall 2021 Cost and Payment Information

Course Fees

Enrollment Fee	\$46 per unit
Nonresident Fee*	\$292 per unit
Instructional Material Fee	Varies

Optional Fees

Child Development Center Donation	\$3
Daily Parking Permit	\$3
Annual Parking Permit	\$95
Semester Parking Permit	\$53

Payment

Students may log into their WebReg portal and pay fees. Additionally, fees may be paid in person at the Fiscal Services Office located in the Administration Building.

*Nonresident and international students are charged both enrollment and nonresident fees per unit for course registration.

In addition, international (F1 visa) students may have other fees. Please visit: www.mpc.edu/internationalstudents for more information.

Term/Session Fees

Health Fee	\$20
Student Center Use Fee	\$10
Student Body Fee	\$5
Student Representative Fee	\$2

As per the college catalog, all fees and tuition charges are subject to change without prior notification.

For more detailed information on current fees, waivers, and refunds please visit: www.mpc.edu/admissions/fees-payments-refunds

WebReg Worksheet

To access WebReg, Monterey Peninsula College requires students to use their Student ID Number (if known), otherwise students may use their Social Security Number to access their Student Portal.

WebReg Hours:

www.mpc.edu

24 hours per day

WebReg Help Line Hours:

Monday-Thursday: 9:00 am - 4:00 pm

Friday: 9:00 am - 12:00 pm

Call (831) 646-4002

Guidelines: Complete the worksheet on the right of this page before logging in. Have a list of alternate courses, as some of the classes may be closed.

NOTE: *If you were not registered at MPC in the previous term, and have not submitted an Application for Admission for the term you wish to register for, registration will be denied.*

If you have changed your mailing address, telephone number and/or email address, update the information on WebReg.

The fastest, most secure way to pay for classes is through WebReg with a VISA or MasterCard. Need an alternative? There is a drop box outside the Administration Building to drop off payments.

Computers and WebReg assistance available at the Admissions & Records Office in the Student Services Building.

Priority registration for Fall classes begins April 21, 2021

WebReg Helpline
(831) 646-4002

To Register by WebReg:

1. Visit MPC's web site (www.mpc.edu).
2. Click on WebReg (at the top of the website).
3. For initial entry
 - **ID Number** (enter your SSN if you do not know your student ID number)
 - **PIN** (enter your 8-digit birth date (MMDDYYYY), no spaces)
4. Click Login.
5. If asked, update your PIN. It is your responsibility to remember the PIN you enter. From this point, you will be using this PIN when accessing your WebReg account.
6. You are now in your WebReg account. Update your information, if needed
PLEASE READ THE INSTRUCTIONS PRINTED ON EACH SCREEN
7. To register, click on Add/Drop/Register.
8. Select the semester/session in which you are registering.
9. Enter the 4-digit section number of the class(es) you wish to register into the "Enter Section Number box, click the "Add to Cart" button.

4 Digit Section #	Course	Units	Day(s)	Time

If the course you entered has the option of being taken for Letter Grade or P/NP (Pass/No Pass), you must now choose the grading option for which you wish to take the course. Click the option of your choice. Consult a counselor with questions.

The information related to the section number you entered appears. If this is the correct course and you wish to add additional courses, click "More Schedule Changes." Continue this process until you have requested all your courses.

If you have chosen the wrong course, click the shopping cart under the Remove button to drop the course.

10. After you have enrolled in all your desired courses, continue your registration by clicking on "Checkout"
11. The amount of money you owe for this transaction appears. **You must choose a payment option to finalize your registration.** If you clicked on payment to be made by check or cash, please complete the WebReg Payment Slip and submit your payment to Fiscal Services located in the Administration Building.
12. **When adding or dropping courses, ALWAYS PRINT YOUR RECEIPT.** This will be your record of the courses that you have added and/or dropped.
13. **If you need to make schedule changes at a later time,** you must FIRST drop the courses that you no longer wish to take and then add the classes that you want to take instead.
14. If you wish to purchase a Parking Permit, click Purchase Optional Fees. Parking permits will be mailed to students. Make sure your address is current in WebReg. Parking permits will begin to be mailed a few weeks before the term begins. Payment must be received before permits can be mailed out. So order and pay early!

Financial Aid Information

What is Financial Aid?

Financial aid is the money you receive from federal, state and local programs to help you meet the expenses (books, enrollment fee, food, rent, and transportation) of a college education. Student Financial Services provides different types of financial aid, such as grants, scholarships, work-study, and Direct Student Loans. **THE PRIMARY RESPONSIBILITY OF PAYING COLLEGE COSTS RESTS WITH YOU AND YOUR PARENTS.**

Who is eligible?

You do not need to be low-income to be eligible for financial aid, but you must demonstrate financial need. Your financial need is the difference between the cost of attendance and your expected family contribution. If you would like to apply for financial, APPLY NOW!

How do I apply?

To be considered for financial aid, you will need to complete the Free Application for Federal Student Aid (FAFSA) as soon as possible at <https://fafsa.gov> or the Dream Act Application at www.csac.ca.gov/dream_act.asp Student Financial Services will notify you of any required documents to complete your financial aid file or you can check your financial aid portal.

What are the General Eligibility Requirements?

In order to be eligible for federal, state, and institutional financial aid programs, a student must meet the following requirements:

- Must be accepted for admission and enrolled in an eligible academic program.
- Must have a High School Diploma or the equivalent (GED), or have received the California High School Proficiency Examination (CHSPE).
- Must be making satisfactory academic progress (SAP), whether or not you received financial aid.
- Must be a U.S. Citizen or eligible non-citizen with a valid Social Security Number for Federal aid.
- Must be in compliance with Selective Service Registration requirements.
- Must have resolved any drug conviction issues.
- Must not be in default on any Federal Loan Program or in repayment of any Federal Grant Programs.
- Must demonstrate financial need.

What is Financial Aid Satisfactory Academic Progress?

In order to show financial aid satisfactory academic progress during a given semester, you must:

- Earn cumulative grade point averages of at least 2.0 ("C" average);
- Complete 2/3 of the units you attempt cumulatively and complete your degree within the 150% maximum time frame (90 units attempted.)
- For the California College Promise Grant, maintain 2.0 GPA and complete 50% of attempted units each semester and overall.

What are my responsibilities as a student receiving Financial Aid?

As a student receiving financial aid, you are required to:

- Sign up for an MPC email account.
- Notify Student Financial Services of any change in your name, marital status, Social Security Number or income.
- Respond immediately to all correspondence sent to you by the Student Financial Services office, the Federal or State Student Aid Programs.
- Register for your classes, and complete all requirements for financial aid.
- Maintain satisfactory academic progress.

**Please note that it is the student's responsibility to pay any outstanding fees to MPC.*

What is the deadline to apply for Financial Aid?

The Free Application for Federal Student Aid (FAFSA) becomes available October 1st of every year. The application for financial aid has to be completed every year you are planning to attend school. There is a priority deadline which is March 2nd, so it is encouraged to apply early.

How can I check on my status?

There are a few ways to check on your status, They are:

- Visiting the financial aid office in the Student Service Building.
- Sending an email from your MPC email account.
- Through WebReg Portal under My Financial Aid.

When will I know if I am eligible for Financial Aid?

Once you have completed the financial aid application process, your eligibility for financial aid will be determined. Student Financial Services will email you a financial aid award letter. The award letter will inform you of the amount and types of financial aid you will be eligible to receive. If you are not eligible to receive financial aid, Student Financial Services will notify you by email as well.

What about fee waivers?

- **California College Promise Grant (CCPG):** This California-funded fee waiver program assists students who are classified as California residents with the mandatory Enrollment Fee.
- **CCPG Method A:** Assists students who are receiving public assistance, or are dependents of a parent on public assistance.
- **CCPG Method B:** Assists students as determined by the California Income Standards.
- **CCPG Method C:** Assists students who have completed the FAFSA and have \$1,104 in need. This is determined by Student Financial Services.
- **MPC PROMISE SCHOLARSHIP:** First Time-Full Time Students, First and Second Year Tuition Free! See website at: www.mpc.edu/promise.

HOW DO I APPLY FOR STUDENT LOANS?

To apply for student loans, you will need to complete the steps listed at: <https://www.mpc.edu/financial-aid/applications/direct-federal-student-loan>

Student Financial Services is located in the Student Services building. Please refer to the Financial Aid website for office hours. Contact Student Financial Services for assistance at **(831) 646-4030**, send an email to financialaid@mpc.edu, or visit our website at www.mpc.edu/financial-aid.

**DID YOU KNOW
YOU CAN TAKE
COLLEGE CLASSES
WHILE YOU'RE IN
HIGH SCHOOL?**



Now is a great time to earn college credit.
Online classes make it convenient to learn on your schedule!

Guarantee Your Success with FYE!

Starting a new educational journey can be exciting and overwhelming. The First Year Experience program is community-based, designed to help you be successful in your first year of college life by providing a supportive, caring environment of educational & career services.



- Early Registration
- FYE Learning Community
- Peer Mentors
- Strategies for Success in College
- Field Trips & Activities
- Bilingual Coordinators

www.mpc.edu/fye

Need Cash For College?

Over \$400,000 in Scholarship Monies Awarded Annually!

Through the generous gifts from local community members, the MPC Foundation provides over 160 scholarships annually to MPC students and incoming high school graduates through a combination of endowed, named, and unrestricted gifts.

All students are welcome to apply.

I got a scholarship from the MPC Foundation



Visit www.mpc.edu/scholarships to learn more about MPC scholarships, the application process, and deadlines

SECTION	DAYS	TIME	INSTRUCTOR	ROOM	UNITS	SECTION	DAYS	TIME	INSTRUCTOR	ROOM	UNITS	SECTION	DAYS	TIME	INSTRUCTOR	ROOM	UNITS
---------	------	------	------------	------	-------	---------	------	------	------------	------	-------	---------	------	------	------------	------	-------

Adapted Physical Education

ADPE 8	INTRODUCTION TO ADAPTED PHYSICAL EDUCATION	
0123	TTh	12:30pm-1:35pm Staff DA104 0.5 (09/07-11/23)
ADPE 9	ADAPTED PERSONAL FITNESS	
0124	MTWThF	10:00am-10:50am Staff DA104 1.5
ADPE 10	ADAPTED WEIGHT TRAINING	
0125	MWF	11:00am-11:50am Staff DA104 1.0
ADPE 13	PHYSICAL EDUCATION: ADAPTED	
0126	MTWThF	9:00am-9:50am Staff DA104 1.5
ADPE 15	HEART HEALTHY EXERCISE	
0127	MTWThF	8:00am-8:50am Staff DA104 1.5
ADPE 16	ADAPTED FLEXIBILITY AND MOVEMENT TECHNIQUES	
0128	TTh	11:00am-12:20pm Staff DA104 1.0

Administration Of Justice

ADMJ 2	INTRODUCTION TO ADMINISTRATION OF JUSTICE	
0001	6h 20m / week	Turner J. Online 3.0 (08/16-10/08)
0390	W &	11:00am-12:15pm Turner J. GA103 3.0 1h 25m / week Turner J. Online

ADMJ 3	COMMUNITY AND THE JUSTICE SYSTEM	
0178	T &	9:30am-10:45am Turner J. GA103 3.0 1h 25m / week Turner J. Online
ADMJ 4	CONCEPTS OF CRIMINAL LAW	
0037	6h 20m / week	Turner J. Online 3.0 (10/11-12/03)
ADMJ 6	LEGAL ASPECTS OF EVIDENCE	
0614	M	6:30pm-9:20pm Boylan E SPS106 3.0
ADMJ 55	WRITING FOR CRIMINAL JUSTICE	
0043	T	6:30pm-9:20pm McGuirk R SPS106 3.0
ADMJ 57	INTRODUCTION TO CORRECTIONS	
0605	Th &	12:30pm-1:45pm Turner J. Online 3.0 1h 25m / week Turner J. Online
ADMJ 66	CRIMINAL INVESTIGATION	
0355	W	6:30pm-9:20pm Drown-Delfin SPS106 3.0

American Sign Language

SIGN 1A	ELEMENTARY AMERICAN SIGN LANGUAGE I	
0878	T &	12:00pm-2:15pm Stack K Online 5.0 2h 25m / week Stack K Online
SIGN 1AL	ELEMENTARY AMERICAN SIGN LANGUAGE I LAB	
1409	Th	3:00pm-4:50pm Staff Online 0.5 (09/02-12/02)
SIGN 1B	ELEMENTARY AMERICAN SIGN LANGUAGE II	
0289	M &	12:00pm-2:15pm Stack K Online 5.0 2h 25m / week Stack K Online
SIGN 1BL	ELEMENTARY AMERICAN SIGN LANGUAGE II LAB	
1600	Th	3:00pm-4:50pm Staff Online 0.5 (09/02-12/02)
SIGN 1CL	INTERMEDIATE AMERICAN SIGN LANGUAGE I LAB	
0305	Th	3:00pm-4:50pm Staff Online 0.5 (09/02-12/02)
SIGN 1DL	INTERMEDIATE AMERICAN SIGN LANGUAGE II LAB	
0306	Th	3:00pm-4:50pm Staff Online 1.0 (09/02-12/02)
SIGN 2A	INTERMEDIATE AMERICAN SIGN LANGUAGE	
0488	T &	5:30pm-7:45pm Stack K Online 5.0 2h 25m / week Stack K Online
SIGN 10	STRUCTURE AND CULTURE OF AMERICAN SIGN LANGUAGE	
0285	3h 0m / week	Stack K Online 3.0

LEARN A LANGUAGE AT MPC



AMERICAN SIGN LANGUAGE

FRENCH

JAPANESE

SPANISH (native and non-native speakers)

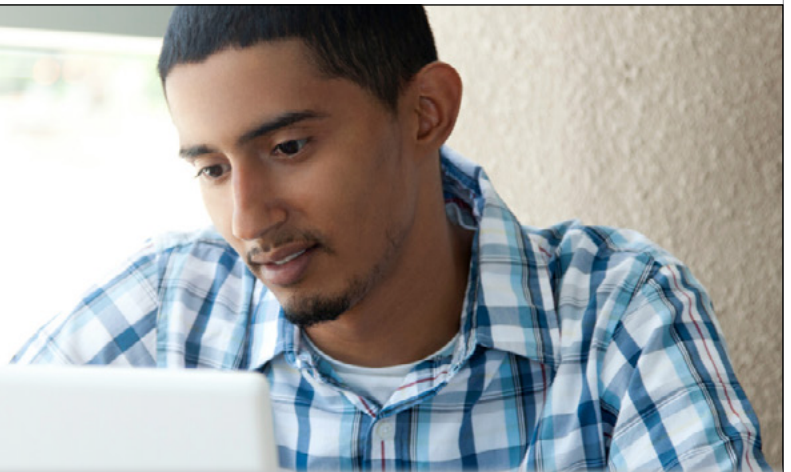
Learning another language gives you the opportunity to **communicate** with other **communities**, make **connections** and **comparisons** with other **cultures**, and understand yourself in different worlds.

Visit mpc.edu/languages to learn more!



SECTION	DAYS	TIME	INSTRUCTOR	ROOM	UNITS	SECTION	DAYS	TIME	INSTRUCTOR	ROOM	UNITS	SECTION	DAYS	TIME	INSTRUCTOR	ROOM	UNITS
Anatomy																	
ANAT 1 HUMAN ANATOMY																	
0349		2h 0m / week	Faust H	Online	2.0												
0726	TTh	1:00pm-1:50pm	Ambaw A	Online	2.0												
0965		2h 0m / week	Faust H	Online	2.0												
1202		2h 0m / week	Faust H	Online	2.0												
1212	TTh	1:00pm-1:50pm	Ambaw A	Online	2.0												
1269		2h 0m / week	Faust H	Online	2.0												
ANAT 2 HUMAN ANATOMY LAB																	
0003	M	9:00am-11:50am	Faust H	LS211	2.0												
	&	3h 0m / week	Faust H	Online													
0005	Th	2:00pm-4:50pm	Ambaw A	LS211	2.0												
	&	3h 0m / week	Ambaw A	Online													
0095	Th	9:00am-11:50am	Ambaw A	LS211	2.0												
	&	3h 0m / week	Ambaw A	Online													
0267	W	9:00am-11:50am	Faust H	Online	2.0												
	&	3h 0m / week	Faust H	Online													
0352	Sat	9:00am-11:50am	Patel R	Online	2.0												
	&	3h 0m / week	Patel R	Online													
0966	W	6:30pm-9:20pm	Ahmed O	LS211	2.0												
	&	3h 0m / week	Ahmed O	Online													
1155	F	9:00am-11:50am	Faust H	LS211	2.0												
	&	3h 0m / week	Faust H	Online													
1271	T	7:00pm-9:50pm	Faust H	Online	2.0												
	&	3h 0m / week	Faust H	Online													
1313	T	9:30am-12:20pm	Ambaw A	Online	2.0												
	&	3h 0m / week	Ambaw A	Online													
ANAT 5 HUMAN BIOLOGY																	
0007		6h 0m / week	Noel M	Online	4.0												
0008	TTh	8:30am-9:45am	Craig H	LS107	4.0												
	&	3h 0m / week	Craig H	Online													
0302	TTh	11:30am-12:45pm	Craig H	LS107	4.0												
	&	3h 0m / week	Craig H	Online													
0967	M	6:00pm-8:50pm	Sanculi D	LS107	4.0												
	&	3h 0m / week	Sanculi D	Online													
0968		6h 0m / week	Bard D	Online	4.0												
1317		3h 0m / week	Sanculi D	Online	4.0												
	& Sat	9:00am-11:50am	Sanculi D	LS107													
Anthropology																	
ANTH 2 INTRODUCTION TO BIOLOGICAL ANTHROPOLOGY																	
0015	MW	11:00am-12:15pm	Kary E	SS205	3.0												
0016		3h 0m / week	Kary E	Online	3.0												
0489		3h 0m / week	Kary E	Online	3.0												
ANTH 2L BIOLOGICAL ANTHROPOLOGY LABORATORY																	
0018		3h 0m / week	Michaels G	Online	1.0												
0150		3h 0m / week	Michaels G	Online	1.0												
ANTH 4 INTRODUCTION TO CULTURAL ANTHROPOLOGY																	
0019	MW	12:30pm-1:45pm	Kary E	SS205	3.0												
0020		3h 0m / week	Kary E	Online	3.0												
ANTH 6 INTRODUCTION TO ARCHAEOLOGY AND PREHISTORY																	
0021		3h 0m / week	Michaels G	Online	3.0												
Art - Basics																	
ARTB 2 VISUAL FUNDAMENTALS: TWO-DIMENSIONAL DESIGN																	
0468	TTh	9:30am-12:20pm	Lara C	AC101	3.0												
ARTB 3 VISUAL FUNDAMENTALS: THREE-DIMENSIONAL DESIGN																	
0483		6h 0m / week	Quinonez	Online	3.0												
ARTB 4 COLOR FUNDAMENTALS																	
0469	TTh	9:30am-12:20pm	Niven M	AS101	3.0												

GET READY TO TAKE AN ONLINE CLASS



Complete the online orientation course to prepare for success!

We can assist you with the technology you need, like free WiFi and a Chromebook. Our online education support staff, librarians, math, English, and STEM tutors are available to help you with your classes, too!

To learn more, visit www.mpc.edu/online



umojajatm community

EARNING DEGREES
TRANSFER READINESS
CAREER PREPARATION

TRANSFORMING, ENRICHING,
AND ADVANCING LIVES OF STUDENTS

MPC's Umoja Learning Community is a program designed to assist African American and other historically underrepresented students. Umoja is specifically designed to increase the retention, success, graduation, and transfer rates of African ancestry students by integrating academics, support services and African-American culture.

Learn how you can join the MPC Umoja Learning Community at www.mpc.edu/umojaja.



HISPANIC SERVING INSTITUTION

42%

Of MPC students are Hispanic

66%

Of Latinx Students attend HSI's



- Improve placement and progression of underserved students
- Build a transfer culture that promotes degree completion
- Strengthen a connection between MPC and CSU Monterey Bay

follow us on Instagram  @hsi_mpc
#somosmpc #golobos #mpchsi



Art - Ceramics Technology

SECTION	DAYS	TIME	INSTRUCTOR	ROOM	UNITS
ARCE 1 INTRODUCTION TO CERAMICS					
0435	6h 0m / week	Eisenbach D	Online	3.0	
ARCE 1A CERAMIC HANDBUILDING I					
1065	6h 0m / week	Eisenbach D	Online	3.0	
ARCE 1B CERAMIC HANDBUILDING II					
0059	6h 0m / week	Eisenbach D	Online	3.0	
ARCE 1C CERAMIC HANDBUILDING III					
0490	6h 0m / week	Eisenbach D	Online	3.0	
ARCE 1D CERAMIC HANDBUILDING IV					
1543	6h 0m / week	Eisenbach D	Online	3.0	
ARCE 2A CERAMIC WHEEL THROWING I					
0471	TTh 9:30am-12:20pm	Tanous M	AC104	3.0	
ARCE 2B CERAMIC WHEEL THROWING II					
0476	TTh 9:30am-12:20pm	Tanous M	AC104	3.0	
ARCE 2C CERAMIC WHEEL THROWING III					
0477	TTh 9:30am-12:20pm	Tanous M	AC104	3.0	

SECTION	DAYS	TIME	INSTRUCTOR	ROOM	UNITS
ARCE 3A INTRODUCTION TO CERAMIC SCULPTURE					
0200	6h 0m / week	Eisenbach D	Online	3.0	
ARCE 3B CERAMIC SCULPTURE II					
0202	6h 0m / week	Eisenbach D	Online	3.0	
ARCE 3C CERAMIC SCULPTURE III					
0203	6h 0m / week	Eisenbach D	Online	3.0	
ARCE 3D CERAMIC SCULPTURE IV					
0206	6h 0m / week	Eisenbach D	Online	3.0	

Art - Dimensional

SECTION	DAYS	TIME	INSTRUCTOR	ROOM	UNITS
ARTD 7A 3D ARTS AND TECHNOLOGY I					
0197	6h 0m / week	Quinonez	Online	3.0	
ARTD 7B 3D ARTS AND TECHNOLOGY II					
0199	6h 0m / week	Quinonez	Online	3.0	
ARTD 40 INTRODUCTION TO JEWELRY AND METALSMITHING					
0263	TTh 2:00pm-3:15pm & 3h 0m / week	Gleason A	Online	3.0	
ARTD 40A JEWELRY AND METAL ARTS I					
0075	TTh 2:00pm-3:15pm & 3h 0m / week	Gleason A	Online	3.0	

SECTION	DAYS	TIME	INSTRUCTOR	ROOM	UNITS
ARTD 40B JEWELRY AND METAL ARTS II					
0076	TTh 2:00pm-3:15pm & 3h 0m / week	Gleason A	Online	3.0	
ARTD 40C JEWELRY AND METAL ARTS III					
0078	TTh 2:00pm-3:15pm & 3h 0m / week	Gleason A	Online	3.0	
ARTD 40D JEWELRY AND METAL ARTS IV					
0079	TTh 2:00pm-3:15pm & 3h 0m / week	Gleason A	Online	3.0	
ARTD 41A SMALL METAL CASTING: JEWELRY I					
0400	MW 1:00pm-2:15pm & 3h 0m / week	Gleason A	Online	3.0	
ARTD 41B SMALL METAL CASTING: JEWELRY II					
0433	MW 1:00pm-2:15pm & 3h 0m / week	Gleason A	Online	3.0	
ARTD 41C SMALL METAL CASTING: JEWELRY III					
0443	MW 1:00pm-2:15pm & 3h 0m / week	Gleason A	Online	3.0	
ARTD 41D SMALL METAL CASTING: JEWELRY IV					
0453	MW 1:00pm-2:15pm & 3h 0m / week	Gleason A	Online	3.0	

Don't worry ... we've got the support you need to succeed!



- **MPC Library**
www.mpc.edu/library
- **Math Learning Center**
www.mpc.edu/mlc
- **Reading & Writing Center**
www.mpc.edu/rwc
- **STEM CEL**
www.mpc.edu/stemcel
- **Tutoring & Academic Success Center**
www.mpc.edu/tasc

Visit us on the Student Services Hub in Canvas!

HEY MPC STUDENTS RIDE THE MST BUS FOR FREE!



Jump on the bus and go anywhere they go!

Show your current student I.D for unlimited access

- Check the bus schedule for the most current times on the MST website or app

SECTION	DAYS	TIME	INSTRUCTOR	ROOM	UNITS	SECTION	DAYS	TIME	INSTRUCTOR	ROOM	UNITS	SECTION	DAYS	TIME	INSTRUCTOR	ROOM	UNITS
---------	------	------	------------	------	-------	---------	------	------	------------	------	-------	---------	------	------	------------	------	-------

Art - Graphics

ARTG 10	INTRODUCTION TO COMPUTERS FOR GRAPHIC ARTS																
1045	MW &	9:30am-10:45am & 3h 0m / week	Dagdigan J	Online	4.0												
ARTG 11	INTRODUCTION TO PHOTOSHOP																
0541	TTh &	6:00pm-7:15pm & 3h 0m / week	Wolf J	Online	4.0												
ARTG 12	PAGE LAYOUT AND TYPOGRAPHY																
0255	TTh &	9:30am-10:45am & 3h 0m / week	Dagdigan J	Online	4.0												

Art - History

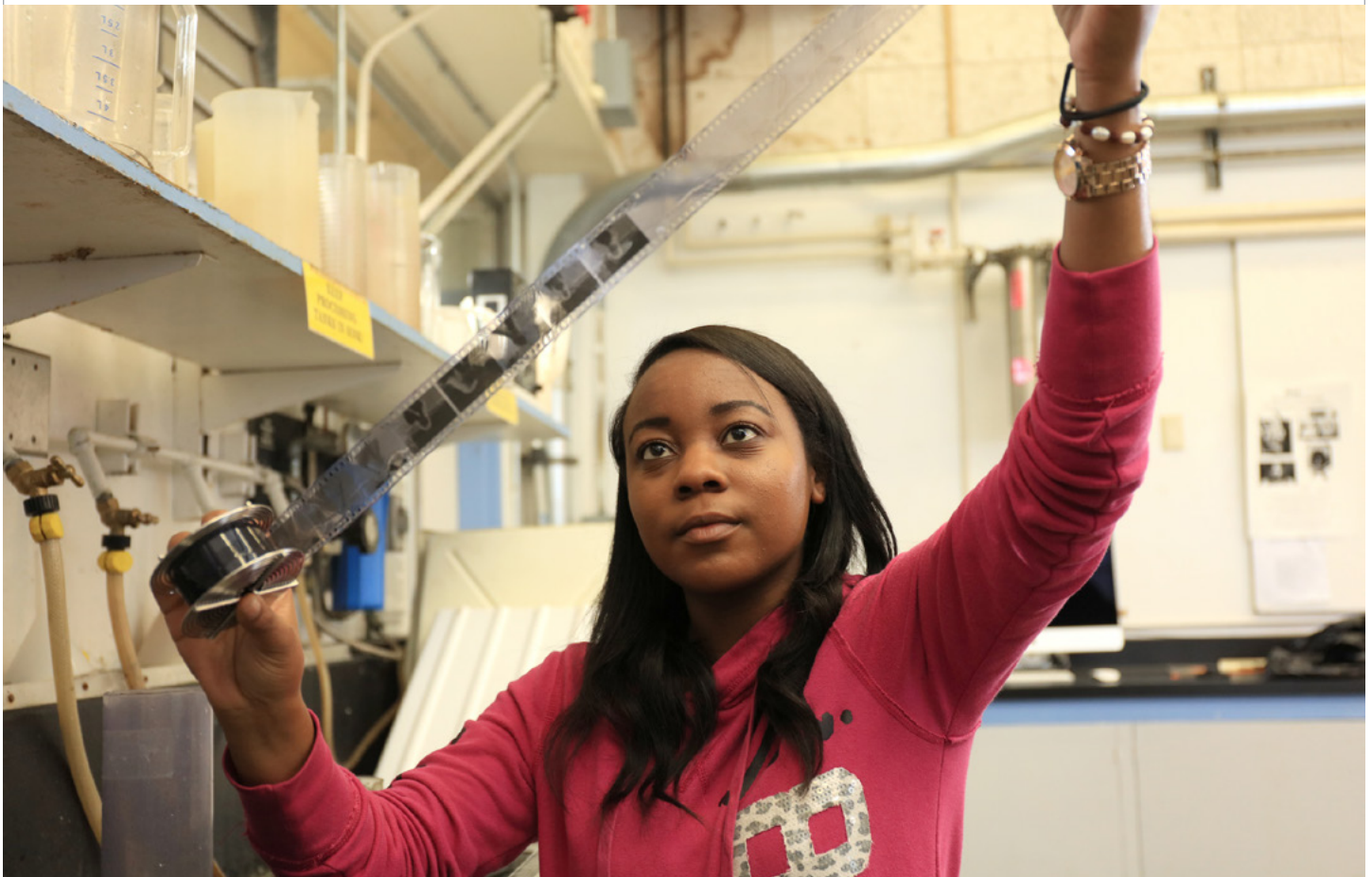
ARTH 1	ART APPRECIATION																
0991	3h 0m / week		Madsen	Online	3.0												
1252	3h 0m / week		Madsen	Online	3.0												
ARTH 3	WESTERN ART I																
0555	3h 0m / week		Madsen	Online	3.0												
ARTH 8	SURVEY OF ASIAN ART																
1281	3h 0m / week		Madsen	Online	3.0												

Art - Photography

ARTP 10	INTRODUCTION TO PHOTOGRAPHY																
0047	3h 0m / week		Bhattacharji	Online	3.0												
ARTP 11A	PHOTOGRAPHY I: BLACK AND WHITE																
0437	T &	3:30pm-6:20pm & 2h 25m / week	Lara C	Online	3.0												
ARTP 12A	DIGITAL PHOTOGRAPHY I																
0103	6h 0m / week		Bhattacharji	Online	3.0												
1170	5h 20m / week		Lara C	PGHS	3.0												
ARTP 14	HISTORY OF PHOTOGRAPHY																
0261	3h 0m / week		Mettler	Online	3.0												
ARTP 15	PORTRAITURE PHOTOGRAPHY																
0960	6h 0m / week		Mettler	Online	3.0												

Art - Studio

ARTS 10A	DRAWING AND COMPOSITION I																
0191	5h 25m / week		Quinonez	Online	3.0												
ARTS 11A	SKETCH I																
0568	T &	9:30am-10:45am & 1h 25m / week	Gomez G	Online	1.5												
ARTS 11B	SKETCH II																
0594	T &	9:30am-10:45am & 1h 25m / week	Gomez G	Online	1.5												
ARTS 12A	FIGURE DRAWING I																
0581	MW	9:00am-11:50am	Thorson C	AS107	3.0												
ARTS 12B	FIGURE DRAWING II																
0582	MW	9:00am-11:50am	Thorson C	AS107	3.0												
ARTS 12C	FIGURE DRAWING III																
0578	MW	9:00am-11:50am	Thorson C	AS107	3.0												



SECTION	DAYS	TIME	INSTRUCTOR	ROOM	UNITS	SECTION	DAYS	TIME	INSTRUCTOR	ROOM	UNITS	SECTION	DAYS	TIME	INSTRUCTOR	ROOM	UNITS
ARTS 40A PAINTING I																	
0596	TTh	1:00pm-3:50pm	Niven M	AS107	3.0												
ARTS 40B PAINTING II																	
0609	TTh	1:00pm-3:50pm	Niven M	AS107	3.0												
ARTS 40C PAINTING III																	
1607	TTh	1:00pm-3:50pm	Niven M	AS107	3.0												
ARTS 41A WATERCOLOR I																	
1017	MW	1:00pm-2:15pm	Gomez G	Online	3.0												
	&	3h 0m / week	Gomez G	Online													
ARTS 41B WATERCOLOR II																	
1018	MW	1:00pm-2:15pm	Gomez G	Online	3.0												
	&	3h 0m / week	Gomez G	Online													
ARTS 41C WATERCOLOR III																	
1019	MW	1:00pm-2:15pm	Gomez G	Online	3.0												
	&	3h 0m / week	Gomez G	Online													
ARTS 60 INTRODUCTION TO PRINTMAKING																	
0613	MW	12:30pm-3:20pm	Klein E	AS101	3.0												
ARTS 62A RELIEF PRINTMAKING I																	
0262	MW	12:30pm-3:20pm	Klein E	AS101	3.0												
ARTS 62B RELIEF PRINTMAKING II																	
0264	MW	12:30pm-3:20pm	Klein E	AS101	3.0												

Art - Video/Cinema

ARTV 1 INTRODUCTION TO FILM/VIDEO					
1576	3h 0m / week	Robbins	Online	3.0	

Astronomy

ASTR 10 INTRODUCTION TO ASTRONOMY					
0083	3h 0m / week	Hickok E	Online	3.0	
0084	3h 0m / week	Hickok E	Online	3.0	
ASTR 10L INTRODUCTION TO ASTRONOMY LABORATORY					
0088	3h 0m / week	Hickok E	Online	1.0	
	& 3h 0m / week	Wei	Online		
0089	3h 0m / week	Hickok E	Online	1.0	
	& 3h 0m / week	Wei	Online		

Athletics

ATHL 20.1 SKILL DEVELOPMENT FOR BASEBALL					
0781	8h 25m / week	Phillips D	BFIELD	2.0	
	(08/30-11/19)				
ATHL 20.2 SKILL DEVELOPMENT FOR BASKETBALL - MEN					
1326	5h 35m / week	Spiering	PE201	0.5	
	(08/16-09/21)				

LEARN BY DOING!

The MPC Automotive Technology Department is currently offering in-person labs for students.

- Prepare for a high-tech career in the automotive world.
- Learn from highly skilled and highly skilled professionals
- Earn industry certifications through our valued partnerships with Subaru & Mercedes Benz

www.mpc.edu/auto

ATHL 20.3 SKILL DEVELOPMENT FOR BASKETBALL - WOMEN					
1334	5h 35m / week	O'Hare	PE201	0.5	
	(08/16-09/21)				

ATHL 20.5 SKILL DEVELOPMENT FOR GOLF					
0785	TTh	2:00pm-3:50pm	Russo J	BHB	1.0

ATHL 20.6 SKILL DEVELOPMENT FOR SOFTBALL					
0786	6h 20m / week	Berg W	SFIELD	1.5	
	(08/16-11/04)				

ATHL 20.9 SKILL DEVELOPMENT FOR TRACK AND FIELD					
1287	6h 0m / week	Carroll M	TRACK	2.0	

ATHL 30.1 INTERCOLLEGIATE BASKETBALL: WOMEN					
0788	8h 25m / week	O'Hare	PE201	1.5	
	(09/27-12/03)				

ATHL 30.3 INTERCOLLEGIATE VOLLEYBALL: WOMEN					
0789	10h 0m / week	Moore K	PE201	3.0	

ATHL 31.1 INTERCOLLEGIATE FOOTBALL: MEN					
0791	10h 0m / week	Palmer R	FFIELD	3.0	

ATHL 31.2 INTERCOLLEGIATE BASKETBALL: MEN					
0792	8h 25m / week	Spiering	PE201	1.5	
	(09/27-12/03)				

ATHL 31.5 INTERCOLLEGIATE SOCCER: MEN					
1148	10h 0m / week	Cisneros M	FFIELD	3.0	

ATHL 32.4 INTERCOLLEGIATE CROSS COUNTRY: WOMEN AND MEN					
0129	10h 0m / week	Carroll M	TRACK	3.0	

ATHL 61A ELEMENTS OF FOOTBALL I					
1609	2h 45m / week	Staff	PE107	0.5	
	(08/18-11/05)				
1610	2h 45m / week	Staff	PE107	0.5	
	(08/18-11/05)				

Automotive Technology

AUTO 100 INTRODUCTION TO AUTOMOTIVE TECHNOLOGY					
1134	MTWTh	1:00pm-4:05pm	Evans M	AT101	4.0
	& MTWTh	1:00pm-4:05pm	Lawrence J	AT101	
	(08/16-10/07)				
1509	MW	6:30pm-9:20pm	Evans M	AT103	4.0

AUTO 101 ENGINE REPAIR					
0092	MTWTh	8:00am-12:10pm	Lawrence J	AT103	4.0
	(08/16-10/07)				

AUTO 102 BASIC AUTOMOTIVE ELECTRICITY AND ELECTRONICS					
0093	Th	6:00pm-7:50pm	Lawrence J	Online	4.0
	&	3h 25m / week	Lawrence J	Online	

SECTION	DAYS	TIME	INSTRUCTOR	ROOM	UNITS	SECTION	DAYS	TIME	INSTRUCTOR	ROOM	UNITS	SECTION	DAYS	TIME	INSTRUCTOR	ROOM	UNITS
AUTO 103 ENGINE PERFORMANCE																	
0094	MTWTh	8:15am-11:20am	Lawrence J	AT103	4.5												
		(10/11-12/02)															
AUTO 104 AUTOMOTIVE ELECTRICS																	
0984	TTh	12:00pm-4:35pm	Lawrence J	AT103	2.5												
		(10/12-12/02)															
AUTO 111 AUTOMOTIVE STEERING AND SUSPENSION																	
0325	TTh	6:30pm-9:20pm	Omstead C	AT103	4.0												
AUTO 161 SUPERVISED AUTOMOTIVE TRADE EXPERIENCE I																	
0327	W	6:30pm-7:50pm	Lawrence J	GA103	4.0												
	& F	1:00pm-5:15pm	Donohoe	AT103													

Biology

BIOL 10 PRINCIPLES OF BIOLOGY

0096	3h 0m / week	Kochevar R	Online	4.0
	& Th 9:00am-11:50am	Kochevar R	LS104	
0097	3h 0m / week	Kochevar R	Online	4.0
	& Th 2:00pm-4:50pm	Kochevar R	LS104	
0114	3h 0m / week	Gilbert P S	Online	4.0
	& F 2:00pm-4:50pm	Gilbert P S	LS101	
1310	3h 0m / week	Gilbert P S	Online	4.0
	& F 9:00am-11:50am	Gilbert P S	LS104	

BIOL 13 MARINE BIOLOGY

0098	3h 0m / week	Raskoff K	Online	4.0
	& F 2:00pm-4:50pm	Raskoff K	LS104	
0350	W	9:00am-11:50am	Raskoff K	LS104
	& 3h 0m / week	Raskoff K	Online	4.0

BIOL 22 CONCEPTS IN BIOLOGY II: DIVERSITY, ECOLOGY, AND EVOLUTION

0099	3h 0m / week	Gilbert P S	Online	5.0
	& 3h 0m / week	Raskoff K	Online	
	& MW 2:00pm-4:50pm	Gilbert P S	LS101	
	& MW 2:00pm-4:50pm	Raskoff K	LS101	
0100	3h 0m / week	Gilbert P S	Online	5.0
	& 3h 0m / week	Raskoff K	Online	
	& TTh 9:00am-11:50am	Gilbert P S	LS101	
	& TTh 9:00am-11:50am	Raskoff K	LS101	
1311	3h 0m / week	Gilbert P S	Online	5.0
	& 3h 0m / week	Raskoff K	Online	
	& TTh 2:00pm-4:50pm	Gilbert P S	LS101	
	& TTh 2:00pm-4:50pm	Raskoff K	LS101	

BIOL 25 APPLIED MICROBIOLOGY LECTURE

0101	3h 0m / week	Craig H	Online	3.0
1125	3h 0m / week	Craig H	Online	3.0
1214	3h 0m / week	Craig H	Online	3.0

START OR GROW your business TODAY!

Busi 20: Introduction to Business
8/13/21 -12/10/21

Busi 44: Business Ownership/ Management
8/17/20 -12/09/21

Busi 46: Entrepreneurial Mindset
8/30/21-12/10/21

Busi 49: Professional Selling
10/11/21-12/03/21

MPC Can Turn Your Dreams Into a Reality!

BIOL 26 APPLIED MICROBIOLOGY LABORATORY

0102	MWF	10:00am-12:05pm	Craig H	LS201	1.0
		(08/16-10/08)			
0104	MWF	10:00am-12:05pm	Craig H	LS201	1.0
		(10/11-12/03)			
1319	MWF	1:00pm-3:05pm	Craig H	LS201	1.0
		(08/16-10/08)			
1320	MWF	1:00pm-3:05pm	Craig H	LS201	1.0
		(10/11-12/03)			

BIOL 31 ENVIRONMENTAL SCIENCE

0010	3h 0m / week	Raskoff K	Online	3.0
0105	3h 0m / week	Kochevar R	Online	3.0

BIOL 32 ENVIRONMENTAL SCIENCE LABORATORY

0087	3h 0m / week	Kochevar R	Online	1.0
------	--------------	------------	--------	-----

Business

BUSI 1A FINANCIAL ACCOUNTING

0106	4h 0m / week	Mikkelsen	Online	4.0	
0107	4h 0m / week	Mikkelsen	Online	4.0	
0108	4h 0m / week	Mikkelsen	Online	4.0	
1022	T	6:00pm-9:50pm	Roberts C	Online	4.0

BUSI 1B MANAGERIAL ACCOUNTING

1023	4h 0m / week	Mikkelsen	Online	4.0
1606	4h 0m / week	Mikkelsen	Online	4.0

BUSI 18 BUSINESS LAW

0109	TTh	8:00am-9:15am	Castillo L	Online	3.0
0110	3h 0m / week	Castillo L	Online	3.0	
1024	3h 0m / week	Castillo L	Online	3.0	

SECTION	DAYS	TIME	INSTRUCTOR	ROOM	UNITS	SECTION	DAYS	TIME	INSTRUCTOR	ROOM	UNITS	SECTION	DAYS	TIME	INSTRUCTOR	ROOM	UNITS						
BUSI 20 INTRODUCTION TO BUSINESS																							
0111		3h 0m /week	Barrie B	Online	3.0																		
0445		3h 0m /week	Gravelle K	Online	3.0																		
1631	MW	2:00pm-3:15pm	Barrie B	Online	3.0																		
BUSI 22 EFFECTIVE LEADERSHIP IN BUSINESS																							
0112	MW	9:30am-10:45am	Castillo L	Online	3.0																		
BUSI 24 BUSINESS ISSUES AND ETHICS																							
0113		3h 0m /week	Gravelle K	Online	3.0																		
BUSI 44 INTRODUCTION TO BUSINESS OWNERSHIP/MANAGEMENT																							
0116	TTh	12:30pm-1:45pm	Barrie B	Online	3.0																		
BUSI 46 ENTREPRENEURIAL MINDSET																							
0563		3h 20m /week (08/30-12/10)	Barrie B	Online	3.0																		
BUSI 49 PROFESSIONAL SELLING																							
0978	M	6:00pm-7:50pm & 4h 20m /week (10/11-12/03)	Barrie B Barrie B	Online	3.0																		
BUSI 60 FINANCIAL PLANNING AND MONEY MANAGEMENT																							
1561		3h 0m /week	Barrie B	Online	3.0																		
BUSI 62 PRINCIPLES OF INVESTMENT																							
1562		3h 0m /week	Peelman L	Online	3.0																		
BUSI 64 CUSTOMER SERVICE																							
0441	W	4:00pm-4:50pm & 5h 20m /week (08/16-10/08)	Jansen M Jansen M	Online	3.0																		
BUSI 70 BUSINESS COMMUNICATION																							
1163		3h 0m /week	Kimm M	Online	3.0																		
BUSI 110 BUSINESS MATHEMATICS																							
1027		3h 0m /week	Sobotka	Online	3.0																		
BUSI 120A BASIC ACCOUNTING																							
1152	W	6:00pm-9:50pm	Roberts C	Online	4.0																		
BUSI 120B QUICKBOOKS ONLINE ACCOUNTING SOFTWARE																							
0597		3h 0m /week	Sobotka	Online	3.0																		
BUSI 464 CUSTOMER SERVICE																							
0382	M	4:00pm-4:50pm & 5h 20m /week (08/16-10/08)	Jansen M Jansen M	Online	0.0																		

Business Skills Center

BUSC 109 KEYBOARDING FOR COMPUTERS

0585		8h 25m /week (08/23-10/01)	Walker J	Online	1.0
1251		8h 25m /week (10/11-11/19)	Walker J	Online	1.0

BUSC 130 COMPUTER APPLICATIONS - MICROSOFT OUTLOOK

0973		3h 10m /week (10/11-12/03)	Staff	Online	0.5
------	--	-------------------------------	-------	--------	-----

BUSC 133 COMPUTER APPLICATIONS - MICROSOFT ACCESS

0975		6h 20m /week (10/11-12/03)	Staff	Online	1.0
------	--	-------------------------------	-------	--------	-----

BUSC 140 COMPUTER APPLICATIONS - MICROSOFT WORD

1246		6h 20m /week (08/16-10/08)	Ramos J	Online	1.0
------	--	-------------------------------	---------	--------	-----

BUSC 150 COMPUTER APPLICATIONS - MICROSOFT EXCEL

1266		6h 20m /week (10/11-12/03)	Walker J	Online	1.0
------	--	-------------------------------	----------	--------	-----

BUSC 160 COMPUTER APPLICATIONS - MICROSOFT POWERPOINT

0977		6h 20m /week (10/11-12/03)	Ramos J	Online	1.0
------	--	-------------------------------	---------	--------	-----

BUSC 409 KEYBOARDING FOR COMPUTERS

0386		8h 25m /week (08/23-10/01)	Walker J	Online	0.0
------	--	-------------------------------	----------	--------	-----

0387		8h 25m /week (10/11-11/19)	Walker J	Online	0.0
------	--	-------------------------------	----------	--------	-----

BUSC 430 COMPUTER APPLICATIONS: MICROSOFT OUTLOOK

0388		6h 20m /week (10/11-12/03)	Staff	Online	0.0
------	--	-------------------------------	-------	--------	-----

Launch Your Career

Add Microsoft Office knowledge to your skill set with Business Skills courses at MPC!

Business Skills courses are designed to develop foundational skills that prepare you for success in the work force. Improve keyboarding skills and complete Microsoft Office Specialist Certifications in PowerPoint, Excel, and Word.





- MS Application BUSC classes lead to certification
- Complete your exam at the end of the course

SECTION	DAYS	TIME	INSTRUCTOR	ROOM	UNITS	SECTION	DAYS	TIME	INSTRUCTOR	ROOM	UNITS	SECTION	DAYS	TIME	INSTRUCTOR	ROOM	UNITS			
BUSC 433 COMPUTER APPLICATIONS: MICROSOFT ACCESS																				
0389	6h	20m / week	Staff	Online	0.0													(10/11-12/03)		
BUSC 440 COMPUTER APPLICATIONS: MICROSOFT WORD																				
0391	6h	20m / week	Ramos J	Online	0.0													(08/16-10/08)		
BUSC 450 COMPUTER APPLICATIONS: MICROSOFT EXCEL																				
0393	6h	20m / week	Walker J	Online	0.0													(10/11-12/03)		
BUSC 460 COMPUTER APPLICATIONS: MICROSOFT POWERPOINT																				
0394	6h	20m / week	Ramos J	Online	0.0													(10/11-12/03)		

Chemistry

CHEM 1A GENERAL CHEMISTRY I

0119	3h	0m / week	Turner R	Online	5.0	& TTh	2:00pm-4:50pm	Turner R	Online		
0120	3h	0m / week	Turner R	Online	5.0	& MW	2:00pm-4:50pm	Turner R	Online		
0121	3h	0m / week	Turner R	Online	5.0	& TTh	10:00am-12:50pm	Turner R	Online		
0671	9h	0m / week	Turner R	Online	5.0	& 9h	0m / week	Garcia Garcia	Online		

CHEM 1B GENERAL CHEMISTRY II

0205	3h	0m / week	Rivera F	Online	5.0	& MW	8:00am-10:50am	Rivera F	Online		
0208	3h	0m / week	Rivera F	Online	5.0	& MW	2:00pm-4:50pm	Rivera F	Online		

CHEM 2 FUNDAMENTAL CHEMISTRY

0131	3h	0m / week	Rivera F	Online	4.0	& T	2:00pm-4:50pm	Rivera F	Online		
0132	3h	0m / week	Rivera F	Online	4.0	& Th	2:00pm-4:50pm	Rivera F	Online		
0175	3h	0m / week	Bishop M	Online	4.0	& F	1:00pm-3:50pm	Bishop M	Online		
1237	3h	0m / week	Garcia Garcia	Online	4.0	& WF	9:00am-11:05am	Garcia Garcia	Online		

CHEM 10 EVERYDAY CHEMISTRY

0204	3h	0m / week	Ritsema T	Online	4.0	& TTh	12:30pm-1:45pm	Ritsema T	Online		
1322	Sat	9:00am-11:50am	Bishop M	Online	4.0	& 6h	20m / week	Bishop M	Online		
	& 6h	20m / week	Rivera F	Online							

CHEM 12A ORGANIC CHEMISTRY I

0135	MWF	9:00am-9:50am	Ritsema T	Online	5.0	& MW	2:00pm-4:50pm	Ritsema T	Online		
0136	MWF	9:00am-9:50am	Ritsema T	Online	5.0	& MW	10:00am-12:50pm	Ritsema T	Online		

CHEM 30A INTRODUCTORY CHEMISTRY FOR HEALTH SCIENCES

0139	3h	0m / week	Thomas J	Online	4.0	& T	9:00am-11:50am	Thomas J	Online		
0201	3h	0m / week	Thomas J	Online	4.0	& W	6:00pm-8:50pm	Thomas J	Online		
1033	3h	0m / week	Thomas J	Online	4.0	& M	2:00pm-4:50pm	Thomas J	PS207		
1035	3h	0m / week	Thomas J	Online	4.0	& M	6:00pm-8:50pm	Thomas J	PS207		
1238	3h	0m / week	Thomas J	Online	4.0	& T	2:00pm-4:50pm	Thomas J	Online		

Communication Studies

COMM 5 MASS MEDIA METHODS

1223	3h	0m / week	Osburg	Online	3.0
------	----	-----------	--------	--------	-----

Computer Science and Information Systems

CSIS 1 COMPUTER INFORMATION SYSTEMS

0143	5h	0m / week	Olsen J	Online	3.0
1086	5h	0m / week	Singh D	Online	3.0
1476	5h	0m / week	Olsen J	Online	3.0
1577	5h	0m / week	Singh D	Online	3.0

CSIS 9 PROGRAMMING FUNDAMENTALS: PYTHON

1290	5h	0m / week	Seagal D	Online	3.0
1614	5h	0m / week	Seagal D	Online	3.0

CSIS 10A PROGRAMMING METHODS I: JAVA

0146	5h	0m / week	Rebold T	Online	4.0
1051	5h	0m / week	Seagal D	Online	4.0

CSIS 10B PROGRAMMING METHODS II: JAVA

0733	6h	0m / week	Rebold T	Online	4.0
------	----	-----------	----------	--------	-----

CSIS 10C PROGRAMMING METHODS I.5: C AND C++

1477	6h	0m / week	Rebold T	Online	4.0
------	----	-----------	----------	--------	-----

CSIS 50 MS OFFICE APPLICATIONS

0147	2h	0m / week	Stewart M	Online	2.0
0928	T	11:00am-11:50am	Stewart M	Online	2.0
&	1h	0m / week	Stewart M	Online	

CSIS 50L MS OFFICE APPLICATIONS LAB

0149	3h	0m / week	Stewart M	Online	1.0
0929	T	12:00pm-1:15pm	Stewart M	Online	1.0
&	1h	25m / week	Stewart M	Online	



WORK • LEARN • EARN

Did you know you can earn course credit while working at your job, internship, or volunteer work?

ASK US:

- How to find an internship
- How to use your current job for college credit
- How to get started

COOP can boost your grade point average and help you maintain full-time student status and you can pick up a COOP section at any time during the semester!

Contact:
Maj-Britt Kimm or Lindsay Peelman
mpc_coop@mpc.edu
or visit: www.mpc.edu/coop

SECTION	DAYS	TIME	INSTRUCTOR	ROOM	UNITS	SECTION	DAYS	TIME	INSTRUCTOR	ROOM	UNITS	SECTION	DAYS	TIME	INSTRUCTOR	ROOM	UNITS
---------	------	------	------------	------	-------	---------	------	------	------------	------	-------	---------	------	------	------------	------	-------

CSIS 75	INTRODUCTION TO COMPUTER HARDWARE/A+ PREP																
0152	5h 0m / week & TTh	3:30pm-5:10pm	Olsen J	Online	4.0												
			Olsen J	BMC205													
CSIS 76A	CISCO CERTIFIED NETWORK ASSOCIATE (CCNA) 1																
1095	12h 40m / week (08/13-10/08)		Singh D	Online	3.0												
CSIS 76B	CISCO CERTIFIED NETWORK ASSOCIATE (CCNA) 2																
1091	12h 40m / week (10/11-12/03)		Singh D	Online	3.0												
CSIS 77	WEB DESIGN AND PUBLISHING																
0153	MW	10:00am-12:15pm	Seagal D	BMC205	3.0												
CSIS 80	INTRODUCTION TO UNIX AND LINUX																
0154	4h 0m / week		Olsen J	Online	3.0												
CSIS 86	NETWORK SECURITY FUNDAMENTALS/SECURITY+ PREP																
1136	6h 0m / week		Singh D	Online	3.0												
CSIS 87	COMPUTER FORENSICS																
1081	4h 0m / week		Olsen J	Online	3.0												



Dance

DANC 5	DANCE APPRECIATION																
0307	3h 0m / week		Southard S	Online	3.0												
DANC 10A	MODERN DANCE I																
1454	MW	7:00pm-8:50pm	Ross D	DA102	1.0												
DANC 10B	MODERN DANCE II																
0797	MW	7:00pm-8:50pm	Ross D	DA102	1.0												
DANC 10C	MODERN DANCE III																
1288	MW	7:00pm-8:50pm	Ross D	DA102	1.0												
DANC 10D	MODERN DANCE IV																
0770	MW	7:00pm-8:50pm	Ross D	DA102	1.0												
DANC 11A	JAZZ DANCE I																
0133	TTh	5:30pm-7:20pm	Southard S	DA102	1.0												
DANC 11B	JAZZ DANCE II																
0134	TTh	5:30pm-7:20pm	Southard S	DA102	1.0												
DANC 11C	JAZZ DANCE III																
0137	TTh	5:30pm-7:20pm	Southard S	DA102	1.0												
DANC 11D	JAZZ DANCE IV																
0138	TTh	5:30pm-7:20pm	Southard S	DA102	1.0												

DANC 12A	BALLET I																
0980	MW	5:00pm-6:50pm	Keindl P	DA102	1.0												
DANC 12B	BALLET II																
0981	MW	5:00pm-6:50pm	Keindl P	DA102	1.0												
DANC 12C	BALLET III																
0829	MW	5:00pm-6:50pm	Keindl P	DA102	1.0												
DANC 12D	BALLET IV																
0771	MW	5:00pm-6:50pm	Keindl P	DA102	1.0												
DANC 14A	BALLROOM DANCE I																
0144	TTh	7:00pm-8:50pm	Woods M	DA101	1.0												
DANC 14B	BALLROOM DANCE II																
0148	TTh	7:00pm-8:50pm	Woods M	DA101	1.0												
DANC 14C	BALLROOM DANCE III																
0151	TTh	7:00pm-8:50pm	Woods M	DA101	1.0												
DANC 14D	BALLROOM DANCE IV																
0165	TTh	7:00pm-8:50pm	Woods M	DA101	1.0												
DANC 15A	ETHNIC DANCE FORMS I																
0166	MW	6:30pm-8:20pm	Sinclair	DA103	1.0												
DANC 15B	ETHNIC DANCE FORMS II																
0170	MW	6:30pm-8:20pm	Sinclair	DA103	1.0												
DANC 15C	ETHNIC DANCE FORMS III																
0176	MW	6:30pm-8:20pm	Sinclair	DA103	1.0												
DANC 15D	ETHNIC DANCE FORMS IV																
0179	MW	6:30pm-8:20pm	Sinclair	DA103	1.0												

Dental Assisting

DNTL 100	ORIENTATION TO DENTAL CAREERS																
0156	MW	8:00am-10:05am	Grasmuck K	Online	2.0												
DNTL 101	DENTAL ANATOMY																
0157	MW	10:15am-12:20pm	Grasmuck K	Online	2.0												
DNTL 102	CHAIRSIDE ASSISTING I																
0158	4h 15m / week & TTh 8:00am-11:10am		Grasmuck K Hopkins Carp	Online LS202	3.0												
			Topper M	LS202													
0159	4h 15m / week & TTh 1:00pm-4:10pm & TTh 1:00pm-4:10pm		Grasmuck K Hopkins Carp Topper M	Online LS202 LS202	3.0												
DNTL 103	RADIOGRAPHY FOR DENTAL ASSISTANTS																
0160	MWF & MWF 8:00am-11:50am & MWF 8:00am-11:50am		Grasmuck K Hopkins Carp Miller L	LS202 LS202 LS202	2.0												
0161	MWF & MWF 12:45pm-4:35pm & MWF 12:45pm-4:35pm		Farley P Grasmuck K Miller L	LS202 LS202 LS202	2.0												

SECTION	DAYS	TIME	INSTRUCTOR	ROOM	UNITS	SECTION	DAYS	TIME	INSTRUCTOR	ROOM	UNITS	SECTION	DAYS	TIME	INSTRUCTOR	ROOM	UNITS
DNTL 104 CHAIRSIDE ASSISTING II																	
0162		3h 40m / week	Grasmuck K	Online	3.0												
	& TTh	8:30am-11:20am	Grasmuck K	LS202													
	& TTh	8:30am-11:20am	Topper M	LS202													
		(10/12-12/09)															
0163		3h 40m / week	Grasmuck K	Online	3.0												
	& TTh	1:30pm-4:20pm	Grasmuck K	LS202													
	& TTh	1:30pm-4:20pm	Topper M	LS202													
		(10/12-12/09)															
DNTL 105 DENTAL HEALTH SCIENCE																	
0164	MW	1:30pm-3:35pm	Grasmuck K	Online	2.0												
		(08/16-10/06)															

Early Childhood Education

ECED 1 CHILD GROWTH AND DEVELOPMENT																	
0039		3h 0m / week	Lee D	Online	3.0												
0141		3h 0m / week	Lee D	Online	3.0												
0479	M	11:00am-12:15pm	Oswald A	CDC201	3.0												
	&	1h 25m / week	Oswald A	Online													
1107		6h 20m / week	Millovich	Online	3.0												
		(10/11-12/03)															
ECED 2 OBSERVATION AND ASSESSMENT																	
1221	T	6:30am-9:20am	Nyznyk	CDC201	3.0												
ECED 40 POSITIVE CHILD GUIDANCE																	
0053		3h 0m / week	Galer K	Online	3.0												

ECED 51 PRINCIPLES AND PRACTICES OF TEACHING YOUNG CHILDREN																	
0495		3h 0m / week	Staff	Online	3.0												
ECED 52 PRACTICUM: FIELD TEACHING EXPERIENCE																	
0027	W	6:30pm-9:20pm	Procive	CDC201	4.0												
	&	5h 0m / week	Procive	Online													
ECED 55 CHILD, FAMILY, AND COMMUNITY																	
0028		3h 0m / week	Lee D	Online	3.0												
1041	T	11:00am-12:15pm	Lee D	CDC201	3.0												
	&	1h 25m / week	Lee D	Online													
1249		2h 45m / week	Robinson N	SHS	3.0												
ECED 56 TEACHING IN A DIVERSE SOCIETY																	
1042		3h 0m / week	Lee D	Online	3.0												
ECED 61 HEALTH, SAFETY, AND NUTRITION FOR THE YOUNG CHILD																	
1043	W	5:00pm-6:15pm	Nyznyk	CDC201	3.0												
	&	1h 25m / week	Nyznyk	Online													
ECED 74 WORKING W/CHILDREN AND FAMILIES IMPACTED BY STRESS/TRAUMA																	
0354	M	6:30pm-9:20pm	McCraney	CDC201	3.0												
ECED 80 INTRODUCTION TO CURRICULUM																	
0341		3h 0m / week	Galer K	Online	3.0												

Economics

ECON 1 THE AMERICAN ECONOMIC SYSTEM																	
0035	MW	9:30am-10:45am	Morgan D	SS101	3.0												
ECON 2 PRINCIPLES OF ECONOMICS: MACRO																	
0168		3h 0m / week	Albert	Online	3.0												
0169		3h 0m / week	Albert	Online	3.0												
0397	MW	12:30pm-1:45pm	Morgan D	SS101	3.0												
ECON 4 PRINCIPLES OF ECONOMICS: MICRO																	
0173		3h 0m / week	Albert	Online	3.0												
1052		3h 0m / week	Saha S	Online	3.0												

Education

EDUC 1 INTRODUCTION TO TEACHING AND EDUCATION																	
0345	T	9:30am-10:45am	Luke J	SS205	2.0												
	&	2h 0m / week	Luke J	Online													
EDUC 1L EDUCATION SERVICE LEARNING LAB																	
0313		3h 0m / week	Luke J	Online	1.0												



SECTION	DAYS	TIME	INSTRUCTOR	ROOM	UNITS	SECTION	DAYS	TIME	INSTRUCTOR	ROOM	UNITS	SECTION	DAYS	TIME	INSTRUCTOR	ROOM	UNITS
---------	------	------	------------	------	-------	---------	------	------	------------	------	-------	---------	------	------	------------	------	-------

CREATIVE WRITING



Intensive and inspiring classes in multiple genres, designed to build your confidence & strengthen your skills.

- Introduction to Creative Writing
- Poetry Writing
- Novel Writing I

“WHERE IMAGINATION MEETS INSPIRATION”

www.mpc.edu/creativewriting

Emergency Medical Services

EMMS 170A EMERGENCY MEDICAL TECHNICIAN 1: BASIC TRAINING					
0287	MW	6:00pm-9:50pm	Parker A	SPS101	7.0
0288	TTh	6:00pm-9:50pm	Parker A	SPS101	7.0
EMMS 170B EMERGENCY MEDICAL TECHNICIAN 1: BASIC TRAINING APPLICATION					
0290	4h 0m / week		Parker A	SPS101	2.0
0291	4h 0m / week		Parker A	SPS101	2.0
EMMS 470R EMT-1: RECERTIFICATION					
0384	4h 5m / week		Parker A	SPS101	0.0
	(08/16-10/08)				
0385	3h 30m / week		Parker A	SPS101	0.0
	(10/11-12/10)				

Engineering

ENGR 1A INTRODUCTION TO ENGINEERING					
1455	T	5:00pm-6:50pm	Hacker V	Online	3.0
	& Th	4:00pm-6:50pm	Hacker V	Online	
ENGR 2 ENGINEERING DESIGN GRAPHICS					
0432	5h 0m / week		Hacker V	Online	3.0
ENGR 8 ENGINEERING STATICS					
1522	4h 0m / week		Pedersen J	Online	3.0

English

ENGL 1A COLLEGE COMPOSITION

0056	6h 20m / week		Penney	Online	3.0
	(08/16-10/08)				
0240	6h 20m / week		Penney	Online	3.0
	(08/16-10/08)				
0246	TTh	9:30am-10:45am	Rodger B	HU102	3.0
0298	6h 20m / week		Penney	Online	3.0
	(10/11-12/03)				
0321	MW	8:30am-9:45am	Harray	Online	3.0
0322	MW	12:30pm-1:45pm	McMillen J	HU101	3.0
0323	3h 0m / week		Eubanks K.	Online	3.0
0326	3h 0m / week		Young D	Online	3.0
0328	3h 0m / week		Young D	Online	3.0
0329	3h 0m / week		Marchand H	Online	3.0
0330	3h 0m / week		Marchand H	Online	3.0
0331	TTh	12:30pm-1:45pm	Haffa	HU102	3.0
0332	3h 0m / week		Farson J	Online	3.0
0333	TTh	9:30am-10:45am	Ibessaine	HU101	3.0
0334	3h 0m / week		Watson L	Online	3.0
0335	3h 0m / week		Watson L	Online	3.0
0336	TTh	11:00am-12:15pm	Ibessaine	HU101	3.0
0338	TTh	12:30pm-1:45pm	Van Dam	HU212	3.0
0361	MW	11:00am-12:15pm	Fetter E	HU207	3.0
0364	3h 0m / week		Headley	Online	3.0
0369	MW	9:30am-10:45am	Fetter E	HU207	3.0
0371	3h 0m / week		Dennehy	Online	3.0
0374	3h 0m / week		Gerard J	Online	3.0

0377	TTh	11:00am-12:15pm	Kary B	HU210	3.0
0392	3h 0m / week		Dennehy	Online	3.0
0971	6h 20m / week		Penney	Online	3.0
	(10/11-12/03)				
1414	3h 0m / week		Revivo R	Online	3.0
1415	3h 0m / week		Bachman E	Online	3.0
1715	TTh	11:00am-12:15pm	Converse J	HU105	3.0

Section below offered at the MPC Education Center in Marina:

0362	MW	9:30am-10:45am	McMillen J	TBD-MA	3.0
------	----	----------------	------------	--------	-----

ENGL 1B INTRODUCTION TO LITERATURE

0304	3h 0m / week		Gerard J	Online	3.0
0339	3h 0m / week		Dennehy	Online	3.0

ENGL 2 ARGUMENTATIVE WRITING AND CRITICAL THINKING

0065	3h 0m / week		Pirani	Online	3.0
0247	3h 0m / week		Wehner K	Online	3.0
0324	3h 0m / week		Eubanks K.	Online	3.0
0342	TTh	9:30am-10:45am	Kary B	HU210	3.0
0343	MW	9:30am-10:45am	Haffa	HU102	3.0
0344	3h 0m / week		Jonker K	Online	3.0
0346	3h 0m / week		Eubanks K.	Online	3.0
0347	3h 0m / week		Osburg	Online	3.0
0348	3h 0m / week		Kary B	Online	3.0
0475	3h 0m / week		Wehner K	Online	3.0
0615	M	6:00pm-8:50pm	Hulanicki	HU101	3.0
1070	TTh	11:00am-12:15pm	Hulanicki	HU102	3.0
1624	MW	11:00am-12:15pm	Haffa	HU102	3.0



AS A SECOND LANGUAGE

Highly interactive courses designed to help non-native English speakers communicate by gaining fluency in listening, speaking, reading, and writing English.

www.mpc.edu/ensl

Lower levels (1,2,3)

- Focus on fundamentals
- Highly interactive
- Supportive learning environment

Upper levels (4,5,6)

- Focus on academic reading & writing
- Prepares students to succeed at 4-year colleges
- Level 6 classes transferable

ENGL 5 INTRODUCTION TO GREAT BOOKS	0353	3h 0m / week	Gilbert P	Online	3.0
ENGL 25C GREAT BOOKS SEMINAR III	0266	1h 0m / week	Gilbert P	Online	1.0
ENGL 31 INTRODUCTION TO CREATIVE WRITING	0356	3h 0m / week	Marchand H	Online	3.0
ENGL 43 COMICS AS LITERATURE	0017	3h 0m / week	Osburg	Online	3.0
ENGL 47 SURVEY OF BRITISH LITERATURE II	0032	3h 0m / week	Dennehy	Online	3.0
ENGL 53 POETRY WRITING	0022	W 6:00pm-8:50pm	Kary B	Online	3.0
ENGL 54 NOVEL WRITING I	1061	T 6:00pm-8:50pm	Marchand H	Online	3.0
ENGL 101A COLLEGE COMPOSITION PLUS	0412	2h 0m / week	Dennehy	Online	2.0
	0413	2h 0m / week	Gerard J	Online	2.0
	0422	TTh 12:30pm-1:20pm	Kary B	HU210	2.0
	0438	2h 0m / week	Dennehy	Online	2.0
	0467	MW 10:00am-10:50am	Harray	Online	2.0
	0474	2h 0m / week	Headley	Online	2.0

ENGL 111 ACADEMIC READING AND WRITING	0242	4h 0m / week	Fujimoto S	Online	4.0
ENGL 300 PERSONALIZED WRITING INSTRUCTION	0381	1h 25m / week	Lemoine S	Online	0.5
	0383	3h 0m / week	Jensen K	Online	1.0
ENGL 351 COLLEGE READING STRATEGIES I	0414	1h 25m / week	Moses I	Online	0.5
	0415	3h 0m / week	Moses I	Online	1.0
ENGL 352 COLLEGE READING STRATEGIES II	0416	1h 25m / week	Moses I	Online	0.5
ENGL 400 ACADEMIC SUPPORT	0417	9h 0m / week	Gerard A	TBD	0.0

English As A Second Language

ENSL 11 ADVANCED READING AND WRITING	0812	TTh 1:00pm-3:15pm	VanGundy A	HU203	5.0
---------------------------------------------	------	-------------------	------------	-------	-----

ENSL 321 HIGH-BEGINNING READING AND WRITING

Sections below offered at the MPC Education Center in Marina:
0023 MW 6:00pm-8:15pm Warren N TBD-MA 5.0

ENSL 323 HIGH-BEGINNING SPEAKING AND LISTENING

Sections below offered at the MPC Education Center in Marina:
0025 TTh 6:00pm-7:50pm Brady B TBD-MA 4.0

ENSL 328 PRONUNCIATION AND SPELLING

0073 MW 11:00am-12:50pm Dietrich-Har Online 4.0

ENSL 331 LOW-INTERMEDIATE READING AND WRITING

Sections below offered at the MPC Education Center in Marina:
1431 MW 6:00pm-8:15pm Brady B TBD-MA 5.0

ENSL 334 LOW-INTERMEDIATE SPEAKING AND LISTENING

Sections below offered at the MPC Education Center in Marina:
1433 TTh 6:00pm-7:50pm Sanders C TBD-MA 4.0

ENSL 336 ENGLISH SKILLS FOR SUCCESS II

1229 MW 7:00pm-8:25pm Gonzales L Online 1.5 (10/11-12/01)

ENSL 342 INTERMEDIATE READING AND WRITING

0460 TTh 8:30am-10:45am Gorman D HU202 5.0

SECTION	DAYS	TIME	INSTRUCTOR	ROOM	UNITS	SECTION	DAYS	TIME	INSTRUCTOR	ROOM	UNITS	SECTION	DAYS	TIME	INSTRUCTOR	ROOM	UNITS					
ENSL 345	INTERMEDIATE SPEAKING AND LISTENING					ENSL 436	ENGLISH SKILLS FOR SUCCESS II					ETNC 10	INTRODUCTION TO SOCIAL JUSTICE									
0461	MW	9:00am-10:50am	May M	HU201	4.0	1242	MW	7:00pm-8:25pm (10/11-12/01)	Gonzales L	Online	0.0	0635	W	5:30pm-6:45pm	Cabrera K	Online	3.0					
ENSL 346	HIGH-INTERMEDIATE READING AND WRITING: AMERICAN CULTURE					ENSL 442	INTERMEDIATE READING AND WRITING					ETNC 13	INTRODUCTION TO RACE AND ETHNICITY									
1438	TTh	1:00pm-3:15pm	May M	HU107	5.0	0472	TTh	8:30am-10:45am	Gorman D	HU202	0.0	0317	TTh	11:00am-12:15pm	Villarreal A	SS102	3.0					
ENSL 348	HIGH-INTERMEDIATE SPEAKING AND LISTENING					ENSL 445	INTERMEDIATE SPEAKING AND LISTENING					ETNC 18	LATINOS IN AMERICAN GOVERNMENT									
1436	TTh	11:00am-12:50pm	Gorman D	HU201	4.0	0473	MW	9:00am-10:50am	May M	HU201	0.0	0478	MW	9:30am-10:45am	Serena D	Online	3.0					
ENSL 421	HIGH-BEGINNING READING AND WRITING					ENSL 446	HIGH-INTERMEDIATE READING AND WRITING: AMERICAN CULTURE					ETNC 22	ASIAN AMERICANS AND PACIFIC ISLANDERS IN AMERICAN SOCIETY									
<i>Sections below offered at the MPC Education Center in Marina:</i>						1439	TTh	1:00pm-3:15pm	May M	HU107	0.0	0639	6h 20m / week (10/11-12/03)	Cabrera V	Online	3.0						
0024	MW	6:00pm-8:15pm	Warren N	TBD-MA	0.0	ENSL 448	HIGH-INTERMEDIATE SPEAKING AND LISTENING					ETNC 25	AFRICAN AMERICANS IN UNITED STATES HISTORY SINCE 1865									
ENSL 423	HIGH-BEGINNING SPEAKING AND LISTENING					1437	TTh	11:00am-12:50pm	Gorman D	HU201	0.0	0068	T	5:30pm-6:45pm	Cabrera K	Online	3.0					
<i>Sections below offered at the MPC Education Center in Marina:</i>												&	1h 25m / week	Cabrera K	Online							
0026	TTh	6:00pm-7:50pm	Brady B	TBD-MA	0.0	Ethnic Studies																
ENSL 428	PRONUNCIATION AND SPELLING					ETNC 4	MEXICAN-AMERICAN ART IN AMERICAN CULTURE					FASH 10	INTRODUCTION TO FASHION									
0074	MW	11:00am-12:50pm	Dietrich-Har	Online	0.0	1082	6h 20m / week (08/16-10/08)		Cabrera V	Online	3.0	0225	Th	12:00pm-1:50pm	Schneider E	Online	3.0					
ENSL 431	LOW-INTERMEDIATE READING AND WRITING					ETNC 5	AFRICAN-AMERICAN ARTS AND MUSIC IN AMERICAN CULTURE					&	1h 0m / week	Schneider E	Online							
<i>Sections below offered at the MPC Education Center in Marina:</i>						0538	3h 0m / week		Cabrera K	MRNHS	3.0	FASH 15	TEXTILES									
1432	MW	6:00pm-8:15pm	Brady B	TBD-MA	0.0	1013	3h 0m / week		Cabrera K	Online	3.0	0217	Th	10:00am-11:50am	Schneider E	Online	3.0					
ENSL 434	LOW-INTERMEDIATE SPEAKING AND LISTENING					ETNC 6	CULTURE IN AMERICAN FILM					&	1h 0m / week	Schneider E	Online							
<i>Sections below offered at the MPC Education Center in Marina:</i>						0448	T	9:30am-10:45am	Batista V	SS102	3.0											
1434	TTh	6:00pm-7:50pm	Sanders C	TBD-MA	0.0	&	1h 25m / week		Batista V	Online												

Learn to be an **AGENT** of **CHANGE**

Complete your degree in Gender and Women's Studies, a dynamic multicultural program offering courses in highly relevant topics like these fall offerings.

GWOS 3: Gender and Violence

Explore causes and impacts of gender-based violence through a feminist lens.

GWOS 5: Women of Color in the U.S.

Learn about the lives and histories of women representing diverse racial and ethnic groups.



Ask your counselor about GWOS Guided Pathways ---- www.mpc.edu/counseling

Please visit www.mpc.edu/schedule for the most up-to-date list of classes

SECTION	DAYS	TIME	INSTRUCTOR	ROOM	UNITS	SECTION	DAYS	TIME	INSTRUCTOR	ROOM	UNITS	SECTION	DAYS	TIME	INSTRUCTOR	ROOM	UNITS
---------	------	------	------------	------	-------	---------	------	------	------------	------	-------	---------	------	------	------------	------	-------

Fire Protection Technology

The following sections are offered at the MPC Public Safety Training Center, 2642 Colonel Durham St., Seaside, CA 93955. Contact the Public Safety Training Center for additional information 831-646-4240.

FPTC 3 PRINCIPLES OF FIRE AND EMERGENCY SERVICES SAFETY AND SURVIVAL

1444 3h 0m / week Reed Roger Online 3.0

FPTC 5 FIRE PREVENTION

1092 3h 0m / week Prado A Online 3.0

FPTC 6 FIRE PROTECTION SYSTEMS

0002 3h 0m / week Goodwin Online 3.0

FPTC 101 INTRODUCTION TO BASIC FIREFIGHTER I ACADEMY

0464 T 1:00pm-4:50pm Black J SPS106 3.0

FPTC 102 FIREFIGHTER I ACADEMY OBSERVATION & CERTIFICATION ASSESSMENT

1057 42h 25m / week (11/30-12/10) Greenlee SPS119 2.0

FPTC 105A FIREFIGHTER I ACADEMY

0401 TTh 6:00pm-9:50pm Greenlee G SPS119 14.5
 & SatSun 6:00am-7:50am Greenlee G SPS119
 & SatSun 8:00am-11:50am Greenlee G SPS119
 & SatSun 1:00pm-4:50pm Greenlee G SPS119

FPTC 105B FIREFIGHTER I ACADEMY APPLICATION

0402 14h 0m / week Greenlee G SPS119 6.0

FPTC 117 VEHICLE EXTRICATION

1324 24h 10m / week (10/04-10/08) Staff SPS119 0.5

FPTC 118 LOW-ANGLE ROPE RESCUE

1325 24h 10m / week (10/11-10/15) Staff SPS119 0.5

FPTC 119 RAPID INTERVENTION CREW OPERATIONS

1330 24h 10m / week (10/18-10/22) Staff SPS119 0.5

FPTC 126 CONFINED-SPACE RESCUE TECHNICIAN

1331 22h 30m / week (10/25-10/30) Staff SPS119 0.5

FPTC 127A S-212 WILDLAND FIRE CHAINSAWS

1332 36h 15m / week (09/20-09/24) Staff SPS119 0.5

FPTC 127B S-290 INTERMEDIATE WILDLAND FIRE BEHAVIOR

1333 32h 10m / week (09/27-10/01) Staff SPS119 0.5

FPTC 130A COMPANY OFFICER 2A - HUMAN RESOURCES

1335 42h 25m / week (08/23-08/27) Staff SPS119 2.0

FPTC 213 SKILLS AND KNOWLEDGE UPDATE FOR FULL-TIME FIREFIGHTERS

0557 4h 40m / week Lundgren J MARFD 3.0

0584 4h 40m / week Staff GRNFD 3.0

0588 4h 40m / week Urquides MCRFPD 3.0

0590 4h 40m / week Brotemarkle HFD 3.0

0602 4h 40m / week Smith C CDFGR 3.0

0603 4h 40m / week Blaha R SFD 3.0

0890 4h 40m / week Courtney J MFD 3.0

1181 9h 30m / week Blaha R SFD 6.0

ENROLL IN A FIRST RESPONDER TRAINING PROGRAM AT MPC!

Our instructors, with real world work experience in Fire, Law Enforcement, and EMT, will guide you through developing the knowledge and skills you need to become an essential worker serving your community.

www.mpc.edu/pstc



SECTION	DAYS	TIME	INSTRUCTOR	ROOM	UNITS	SECTION	DAYS	TIME	INSTRUCTOR	ROOM	UNITS	SECTION	DAYS	TIME	INSTRUCTOR	ROOM	UNITS
---------	------	------	------------	------	-------	---------	------	------	------------	------	-------	---------	------	------	------------	------	-------

GENTRAIN

Free **NON-CREDIT** learning opportunity



LEARN ABOUT:

- History
- Art
- Drama
- Philosophy
- Religion
- Literature
- World Civilizations

The GENTRAIN program is comprised of 16 different units progressing through time from the ancient world to the present.

GENTRAIN classes may be taken non-credit (400 series) for FREE or for college-credit (courses numbered 1-23) which may satisfy GE requirements and transfer.

A new unit begins each month and students needing a late start course can be accommodated.

Visit www.mpc.edu/gentrain to learn more.

SECTION	DAYS	TIME	INSTRUCTOR	ROOM	UNITS
FPTC 214	SKILLS & KNOWLEDGE UPDATE FOR VOLUNTEER/RESERVE FIREFIGHTERS				
0560	1h 30m / week		Lundgren J	MARFD	1.0
0606	1h 30m / week		Fisher F	CFPD	1.0
0607	2h 20m / week		Goetz C	MCFB	1.5
0610	1h 30m / week		Smith C	BSFB	1.0
0900	1h 30m / week		Blaha R	SFD	1.0
0903	1h 30m / week		Urquides	MCRFPD	1.0
1298	1h 30m / week		Staff	CDFGR	1.0

French

SECTION	DAYS	TIME	INSTRUCTOR	ROOM	UNITS
FREN 1A	ELEMENTARY FRENCH I				
0509	MW &	9:30am-10:20am / week	Gonzales L	Online	5.0
FREN 1B	ELEMENTARY FRENCH II				
0979	TTh &	9:30am-10:20am / week	Gonzales L	Online	5.0
FREN 2B	ADVANCED FRENCH				
0284	F &	10:00am-11:20am / week	Gonzales L	Online	5.0

Gender & Women's Studies

SECTION	DAYS	TIME	INSTRUCTOR	ROOM	UNITS
GWOS 1	INTRODUCTION TO GENDER AND WOMEN'S STUDIES				
0935	3h 0m / week		Davis D	Online	3.0
GWOS 3	GENDER AND VIOLENCE				
0540	6h 20m / week	(10/11-12/03)	Davis D	Online	3.0
GWOS 5	WOMEN OF COLOR IN THE U.S.				
0218	3h 0m / week		Davis D	Online	3.0
GWOS 10	GENDER IN AMERICAN POLITICS				
0070	3h 0m / week		Blanchard L	Online	3.0
GWOS 12	WOMEN IN UNITED STATES HISTORY				
0215	TTh	12:30pm-1:45pm	Mullins E	SS102	3.0
0315	6h 20m / week	(08/16-10/08)	Davis D	Online	3.0
0940	MW	9:30am-10:45am	Mullins E	SS102	3.0
1048	6h 20m / week	(10/11-12/03)	Davis D	Online	3.0
GWOS 40	INTRODUCTION TO FEMINIST THEORY				
0751	3h 0m / week		Davis D	Online	3.0

Gentrain

SECTION	DAYS	TIME	INSTRUCTOR	ROOM	UNITS
GENT 8	LATE RENAISSANCE AND REFORMATION (1520-1600)				
0493	TTh	8:45am-10:50am	Haffa & Madsen, Mullins, Spoto	LF103	1.0
GENT 9	FOUNDATIONS OF THE MODERN WORLD (1600-1690)				
0494	TTh	8:45am-10:50am	Haffa & Madsen, Mullins, Spoto	LF103	1.0
GENT 10	THE AGE OF REASON (1690-1775)				
0496	TTh	8:45am-10:50am	Haffa & Madsen, Mullins, Spoto	LF103	1.0
GENT 11	REACTION AND REVOLUTION (1775-1815)				
0497	TTh	8:20am-10:50am	Haffa & Madsen, Mullins, Spoto	LF103	1.0
GENT 22	THE AGE OF REVOLUTION (1690-1870)				
0503	TTh	8:45am-10:50am	Haffa & Madsen, Mullins, Spoto	LF103	3.0
GENT 408	LATE RENAISSANCE AND REFORMATION (1520-1600)				
0498	TTh	8:45am-10:50am	Haffa & Madsen, Mullins, Spoto	LF103	0.0
GENT 409	FOUNDATIONS OF THE MODERN WORLD (1600-1690)				
0499	TTh	8:45am-10:50am	Haffa & Madsen, Mullins, Spoto	LF103	0.0
GENT 410	THE AGE OF REASON (1690-1775)				
0500	TTh	8:45am-10:50am	Haffa & Madsen, Mullins, Spoto	LF103	0.0
GENT 411	REACTION AND REVOLUTION (1775-1815)				
0501	TTh	8:20am-10:50am	Haffa & Madsen, Mullins, Spoto	LF103	0.0

READY TO WORK! PROGRAMS

BEGIN YOUR PATH TO A REWARDING CAREER THIS FALL AT MPC!



build new skills



earn a certificate



complete a degree

- Accounting & Business
- Automotive Technology
- Dental & Medical Assisting
- Early Childhood Education
- Horticulture
- Networking & Security
- Nutrition & Dietetics
- Sustainable Hospitality



Don't miss out, learn more at www.mpc.edu/careereducation

Geography

GEOG 5 WORLD REGIONAL GEOGRAPHY

0964	3h 0m / week	Ducote K	Online	3.0
------	--------------	----------	--------	-----

Geology

GEOL 2 PHYSICAL GEOLOGY

0273	3h 0m / week	Turrini Smit	Online	3.0
0512	3h 0m / week	Turrini Smit	Online	3.0

GEOL 2L PHYSICAL GEOLOGY LABORATORY

0514	F	12:00pm-2:50pm	Turrini Smit	Online	1.0
0515	F	8:00am-10:50am	Turrini Smit	Online	1.0

GEOL 9 EARTH CATASTROPHES AND DISASTERS

0484	3h 0m / week	Garcia Garci	Online	3.0
1234	3h 0m / week	Garcia Garci	Online	3.0

GEOL 12 EARTH OCEAN CLIMATE: INTRODUCTION TO EARTH SCIENCE

0739	3h 0m / week	Hochstaedter	Online	3.0
------	--------------	--------------	--------	-----

GEOL 12L EARTH OCEAN CLIMATE: INTRODUCTION TO EARTH SCIENCE LAB

0741	Th	8:00am-10:50am	Hochstaedter	Online	1.0
------	----	----------------	--------------	--------	-----

Global Studies

GLST 1 INTRODUCTION TO GLOBAL STUDIES

0311	3h 0m / week	Blanchard L	Online	3.0
------	--------------	-------------	--------	-----

Health

HLTH 4 HEALTHY LIVING

0118	6h 20m / week	Shirley K	Online	3.0
(10/11-12/03)				
0300	6h 20m / week	Noel M	Online	3.0
(10/11-12/03)				
0434	3h 0m / week	Shirley K	Online	3.0

HLTH 7 WOMEN'S HEALTH

0522	3h 0m / week	Shirley K	Online	3.0
------	--------------	-----------	--------	-----

SECTION	DAYS	TIME	INSTRUCTOR	ROOM	UNITS	SECTION	DAYS	TIME	INSTRUCTOR	ROOM	UNITS	SECTION	DAYS	TIME	INSTRUCTOR	ROOM	UNITS
History						HIST 18 UNITED STATES HISTORY FROM 1865						Hospitality					
HIST 7 WORLD HISTORY TO 1500						0379 3h 0m / week Jeffrey C Online 3.0						HOSP 23 CULINARY FOUNDATIONS I					
0048 3h 0m / week Finell J Online 3.0						0536 3h 0m / week Jeffrey C Online 3.0						0004 T 2:15pm-7:05pm Caughman J FC104 3.0					
0080 3h 0m / week Finell J Online 3.0						0537 3h 0m / week Staff Online 3.0						0425 W 2:15pm-7:05pm Caughman J FC104 3.0					
HIST 8 WORLD HISTORY SINCE 1500						1105 3h 0m / week Whitney J Online 3.0						HOSP 41 WINE APPRECIATION AND ANALYSIS					
0227 3h 0m / week Mullins E Online 3.0						1106 6h 20m / week Whitney J Online 3.0						0238 2h 45m / week Eriksen D Online 1.5					
0312 3h 0m / week Mullins E Online 3.0						(10/11-12/03)						(08/16-10/11)					
HIST 12 WOMEN IN UNITED STATES HISTORY						HIST 25 AFRICAN AMERICANS IN UNITED STATES HISTORY SINCE 1865						HOSP 43 ORIGINS OF WINE					
0221 TTh 12:30pm-1:45pm Mullins E SS102 3.0						0502 T 5:30pm-6:45pm Cabrera K Online 3.0						1077 3h 35m / week Eriksen D Online 1.5					
0314 6h 20m / week Davis D Online 3.0						& 1h 25m / week Cabrera K Online						(10/18-12/03)					
(08/16-10/08)						Horticulture						HOSP 51 INTRODUCTION TO THE HOSPITALITY INDUSTRY					
0528 MW 9:30am-10:45am Mullins E SS102 3.0						HORT 51 INTRODUCTION TO HORTICULTURE I						1529 W 4:00pm-4:50pm Jansen M Online 3.0					
1040 6h 20m / week Davis D Online 3.0						0181 W 6:00pm-9:50pm Staff Online 3.0						& 5h 20m / week Jansen M Online					
(10/11-12/03)						HORT 61 PLANT IDENTIFICATION: SHRUBS, VINES, AND GROUND COVERS						(10/11-12/03)					
HIST 15 HISTORY OF CALIFORNIA						0117 M 5:30pm-9:20pm Staff Online 3.0						HOSP 53 INTRODUCTION TO FOOD AND BEVERAGE MANAGEMENT					
0077 3h 0m / week Staff Online 3.0						HORT 70 IRRIGATION DESIGN AND WATER ECONOMY						0428 Th 5:00pm-5:50pm Jansen M Online 3.0					
HIST 17 UNITED STATES HISTORY TO 1877						0122 Th 6:00pm-8:50pm Kern J LS102 3.0						& 5h 20m / week Jansen M Online					
0049 3h 0m / week Finell J Online 3.0						& 1h 20m / week Kern J Online						(08/30-10/22)					
0185 6h 20m / week Jeffrey C Online 3.0						HOSP 60 SPECIAL EVENTS MANAGEMENT						0250 W 6:00pm-6:50pm Jansen M Online 3.0					
(10/11-12/01)												& 5h 20m / week Jansen M Online					
0220 MW 11:00am-12:15pm Logan SS101 3.0												(10/11-12/03)					
0222 3h 0m / week George G Online 3.0																	
0534 3h 0m / week George G Online 3.0																	
0969 3h 0m / week Finell J Online 3.0																	

WE SHOP YOU BAKE!

Dreaming about becoming a baker/pastry chef, or owning a small business?



Enroll in MPC's Non-Credit Baking and Pastry Arts Certificate of Completion. Taught by an experienced Pastry Chef, this low-cost option will provide you the opportunity to develop the knowledge and skills needed to bake sellable products. Courses may be repeated.

www.mpc.edu/hosp

SECTION	DAYS	TIME	INSTRUCTOR	ROOM	UNITS	SECTION	DAYS	TIME	INSTRUCTOR	ROOM	UNITS	SECTION	DAYS	TIME	INSTRUCTOR	ROOM	UNITS			
HOSP 63 HOSPITALITY SUPERVISION	1146	W	5:00pm-5:50pm & 2h 10m / week (10/11-12/03)	Jansen M Jansen M	Online Online	1.5	HOSP 443 ORIGINS OF WINE	1080	3h 35m / week (10/18-12/03)	Eriksen D	Online	0.0	Humanities							
HOSP 64 CUSTOMER SERVICE	0167	W	4:00pm-4:50pm & 5h 20m / week (08/16-10/08)	Jansen M Jansen M	Online Online	3.0	HOSP 464 CUSTOMER SERVICE	0395	W	4:00pm-4:50pm & 5h 20m / week (08/16-10/08)	Jansen M Jansen M	Online Online	0.0	HUMA 10 EXPLORATION OF VALUES IN LIVING	0548	3h 0m / week	Eubanks K.	Online	3.0	
HOSP 77 BAKESHOP: YEASTED AND NON-YEASTED BREADS	0622	TW	8:30am-12:35pm (10/26-11/17)	Adam A	FC104	1.0	HOSP 477 BAKESHOP: YEASTED AND NON-YEASTED BREADS	0662	TW	8:30am-12:35pm (10/26-11/17)	Adam A	FC104	0.0	HUMA 40 INTRODUCTION TO FEMINIST THEORY	0742	3h 0m / week	Davis D	Online	3.0	
HOSP 78 BAKESHOP: BASIC BAKING TECHNIQUES	1406	9h 10m / week (08/17-09/12)	Adam A	Online	1.0	HOSP 478 BAKESHOP: BASIC BAKING TECHNIQUES	0669	9h 10m / week (08/17-09/12)	Adam A	Online	0.0	Interdisciplinary Studies								
HOSP 81 BAKESHOP: PIES AND TARTS	0623	TW	8:30am-12:45pm (09/28-10/20)	Adam A	FC104	1.0	HOSP 481 BAKESHOP: PIES AND TARTS	0723	TW	8:30am-12:45pm (09/28-10/20)	Adam A	FC104	0.0	INDS 440 INTRODUCTION TO THE MONTEREY STATE HISTORICAL PARK	0544	8h 45m / week	Mar S	CCLK	0.0	
HOSP 423 CULINARY FOUNDATIONS I	0228	T	2:15pm-7:05pm	Caughman J	FC104	0.0	Human Services					JPNS 1A ELEMENTARY JAPANESE I	0487	MW	6:00pm-8:05pm & 0h 20m / week	Ogaki T Ogaki T	Online Online	5.0		
HOSP 425 COTTAGE FOOD BUSINESS	0229	W	2:15pm-7:05pm	Caughman J	FC104	0.0	HUMS 50 INTRODUCTION TO HUMAN SERVICES	0090	T	6:30pm-7:45pm & 1h 25m / week	Gable C Gable C	Online Online	3.0	JPNS 2A INTERMEDIATE JAPANESE	0030	TTh	6:00pm-8:05pm & 0h 20m / week	Ogaki T Ogaki T	Online Online	5.0
HOSP 441 WINE APPRECIATION AND ANALYSIS	0243	2h 45m / week (08/16-10/11)	Eriksen D	Online	0.0	HUMS 53 INTRODUCTION TO COUNSELING	0091	Th	6:30pm-7:45pm & 1h 25m / week	Gable C Gable C	Online Online	3.0	Japanese							

BE HEARD. HAVE YOUR SAY. MAKE A DIFFERENCE!

The Associated Students of Monterey Peninsula College (ASMP) are responsible for the coordination and support of student activities and organizations.

Located in the Student Center ASMP:

- Advocates for students' needs
- Provides Student ID cards
- Runs the on-campus Food Pantry

Contact Julie Osborne at (831) 646-4192 or email josborne@mpc.edu



SECTION	DAYS	TIME	INSTRUCTOR	ROOM	UNITS	SECTION	DAYS	TIME	INSTRUCTOR	ROOM	UNITS	SECTION	DAYS	TIME	INSTRUCTOR	ROOM	UNITS
---------	------	------	------------	------	-------	---------	------	------	------------	------	-------	---------	------	------	------------	------	-------

Kinesiology

KINS 40 INTRODUCTION TO KINESIOLOGY

0258	3h 0m / week	O'Hare	Online	3.0
1504	TTh 11:00am-12:15pm	O'Hare	PE105	3.0

KINS 41 PREVENTION AND CARE OF ATHLETIC INJURIES

0457	3h 0m / week	Staff	Online	3.0
------	--------------	-------	--------	-----

KINS 43 THEORY OF COACHING

1138	3h 0m / week	Spiering	Online	3.0
------	--------------	----------	--------	-----

KINS 44 SPORT IN SOCIETY

0831	3h 0m / week	O'Hare	Online	3.0
------	--------------	--------	--------	-----

KINS 45 INTRODUCTION TO CAREERS IN SPORTS MEDICINE AND ALLIED HEALTH

0510	6h 20m / week (10/11-12/03)	O'Hare	Online	3.0
------	--------------------------------	--------	--------	-----

KINS 46 PRINCIPLES OF STRENGTH TRAINING AND CONDITIONING

0824	3h 0m / week	Carroll M	Online	3.0
------	--------------	-----------	--------	-----

KINS 50 ORIENTATION FOR ATHLETES

0794	4h 15m / week (08/17-10/05)	Spiering	Online	2.0
------	--------------------------------	----------	--------	-----

KINS 51 FITNESS AND WELLNESS STRATEGIES

0825	3h 40m / week (08/25-10/20)	Gamble E	Online	2.0
------	--------------------------------	----------	--------	-----

Law Enforcement Training Program

For more information on these and other Law Enforcement Training courses, please visit the South Bay Regional Public Safety Training Consortium website at <http://theacademy.ca.gov/> or call (408) 229-4299.

LETP 130 DEVELOPING A PERSONAL PHILOSOPHY OF LEADERSHIP

1706	12h 50m / week (08/17-08/29)	Vaughn Linda	SNJOSE	1.0
------	---------------------------------	--------------	--------	-----

LETP 144A P.O.S.T. INTENSIVE BASIC ACADEMY I

0663	37h 30m / week (08/02-10/19)	Vaughn Linda	SNJOSE	12.0
------	---------------------------------	--------------	--------	------

1198	37h 30m / week (07/26-10/13)	Vaughn Linda	SNJOSE	12.0
------	---------------------------------	--------------	--------	------

1247	34h 35m / week (06/28-09/24)	Vaughn Linda	SNJOSE	12.0
------	---------------------------------	--------------	--------	------

1270	37h 30m / week (07/05-09/21)	Vaughn Linda	SPS104	12.0
------	---------------------------------	--------------	--------	------

1547	34h 35m / week (06/08-08/28)	Vaughn Linda	SNJOSE	12.0
------	---------------------------------	--------------	--------	------

MPC
MONTEREY PENINSULA
COLLEGE

NATIONAL ACADEMY OF SPORTS MEDICINE
NASM
ACADEMIC PARTNERS

CERTIFIED PERSONAL TRAINER CERTIFICATE

Successful completion of this program prepares you to complete the NASM CPT exam and leads you to a rewarding career in the fitness industry as a Certified Personal Trainer.

www.mpc.edu/kins

LETP 144B P.O.S.T. INTENSIVE BASIC ACADEMY II

0407	36h 30m / week (07/09-10/01)	Vaughn Linda	SNJOSE	12.0
------	---------------------------------	--------------	--------	------

0894	36h 30m / week (09/07-11/29)	Vaughn Linda	SNJOSE	12.0
------	---------------------------------	--------------	--------	------

1260	39h 35m / week (09/22-12/17)	Vaughn Linda	SPS104	12.0
------	---------------------------------	--------------	--------	------

1451	34h 0m / week (09/27-12/27)	Vaughn Linda	SNJOSE	12.0
------	--------------------------------	--------------	--------	------

LETP 145A P.O.S.T. BASIC ACADEMY III

1739	20h 30m / week (07/03-08/23)	Vaughn Linda	SNJOSE	4.5
------	---------------------------------	--------------	--------	-----

LETP 146 BASIC POLICE REQUALIFICATION COURSE

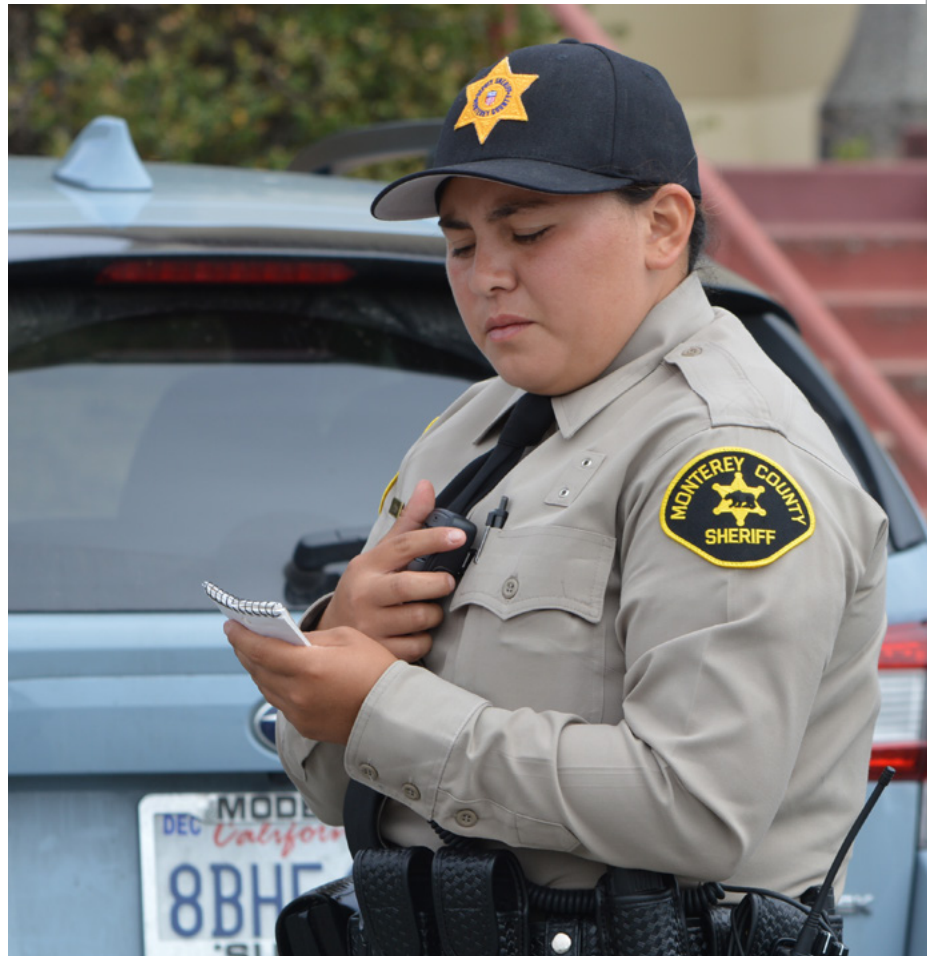
1219	45h 20m / week (11/22-12/10)	Vaughn Linda	SNJOSE	3.0
------	---------------------------------	--------------	--------	-----

LETP 180 CITIZEN'S ACADEMY

0677	3h 0m / week (08/24-11/16)	Vaughn Linda	SNJOSE	1.0
------	-------------------------------	--------------	--------	-----

1116	5h 30m / week (09/08-11/03)	Vaughn Linda	SNJOSE	0.5
------	--------------------------------	--------------	--------	-----

SECTION	DAYS	TIME	INSTRUCTOR	ROOM	UNITS	SECTION	DAYS	TIME	INSTRUCTOR	ROOM	UNITS	SECTION	DAYS	TIME	INSTRUCTOR	ROOM	UNITS
LETP 201 VICE INVESTIGATIONS						LETP 211 HUMAN TRAFFICKING						LETP 232 ADVANCED PEACE OFFICER TRAINING					
1267		39h 5m / week (08/29-09/03)	Vaughn Linda	SNJOSE	2.0	1268		39h 5m / week (08/23-08/27)	Vaughn Linda	SNJOSE	2.0	1191		16h 0m / week (10/07-12/08)	Vaughn Linda	SNJOSE	0.5
1299		39h 5m / week (08/30-09/03)	Vaughn Linda	SNJOSE	2.0	1294		39h 5m / week (10/25-10/29)	Vaughn Linda	SNJOSE	2.0	1215		16h 0m / week (11/07-12/08)	Vaughn Linda	SNJOSE	0.5
LETP 202 FINANCIAL CRIMES INVESTIGATION						LETP 223 DRIVER TRAINING INSTRUCTOR						LETP 232.4 ADVANCED PEACE OFFICER TRAINING: S.W.A.T. UPDATE					
1279		40h 10m / week (11/01-11/05)	Vaughn Linda	SNJOSE	2.0	1295		39h 5m / week (12/06-12/10)	Vaughn Linda	SNJOSE	2.0	1500		26h 30m / week (10/08-10/12)	Vaughn Linda	SNJOSE	0.5
LETP 203 ROBBERY INVESTIGATIONS						LETP 230 ADVANCED OFFICER COURSE						LETP232.31 ADVANCED PEACE OFFICER TRAINING: ADVANCED S.W.A.T. 40 HOURS					
1280		40h 25m / week (10/11-10/15)	Vaughn Linda	SNJOSE	1.0	1176		14h 0m / week (10/08-10/19)	Vaughn Linda	SNJOSE	1.0	1685		24h 0m / week (08/24-08/27)	Vaughn Linda	SNJOSE	0.5
LETP 204 INVESTIGATION CORE						LETP231.95 OFFICER SAFETY - FIELD TACTICS						LETP 233.2 BASIC S.W.A.T. - 80 HOURS					
0665		40h 5m / week (08/16-08/27)	Vaughn Linda	SNJOSE	2.0	1178		34h 0m / week (11/21-12/07)	Vaughn Linda	SNJOSE	1.5	1741		26h 30m / week (10/01-10/05)	Vaughn Linda	SNJOSE	0.5
0666		40h 5m / week (10/18-10/29)	Vaughn Linda	SNJOSE	2.0	1630		20h 20m / week (08/24-08/25)	Vaughn Linda	SNJOSE	0.5	1684		40h 0m / week (09/06-09/09)	Vaughn Linda	SNJOSE	1.0
0679		40h 5m / week (09/20-10/01)	Vaughn Linda	SNJOSE	2.0							LETP232.31 ADVANCED PEACE OFFICER TRAINING: ADVANCED S.W.A.T. 40 HOURS					
1264		40h 5m / week (08/02-08/13)	Vaughn Linda	SNJOSE	2.0							LETP 233.2 BASIC S.W.A.T. - 80 HOURS					
LETP 205 OFFICER-INVOLVED SHOOTING AND DEATH INVESTIGATION												LETP 233.2 BASIC S.W.A.T. - 80 HOURS					
1282		39h 50m / week (10/04-10/08)	Vaughn Linda	SNJOSE	1.0							LETP 233.2 BASIC S.W.A.T. - 80 HOURS					
1283		39h 50m / week (11/15-11/19)	Vaughn Linda	SNJOSE	1.0							LETP 233.2 BASIC S.W.A.T. - 80 HOURS					
LETP 207 HOMICIDE INVESTIGATION												LETP 233.2 BASIC S.W.A.T. - 80 HOURS					
0667		40h 15m / week (08/16-08/27)	Vaughn Linda	SNJOSE	2.0							LETP 233.2 BASIC S.W.A.T. - 80 HOURS					
0724		40h 15m / week (09/20-10/01)	Vaughn Linda	SNJOSE	2.0							LETP 233.2 BASIC S.W.A.T. - 80 HOURS					
1300		40h 15m / week (08/16-08/27)	Vaughn Linda	SNJOSE	2.0							LETP 233.2 BASIC S.W.A.T. - 80 HOURS					
LETP 208 CHILD ABUSE INVESTIGATION												LETP 233.2 BASIC S.W.A.T. - 80 HOURS					
1285		40h 10m / week (11/01-11/05)	Vaughn Linda	SNJOSE	1.0							LETP 233.2 BASIC S.W.A.T. - 80 HOURS					
LETP 209 SEXUAL ASSAULT INVESTIGATION												LETP 233.2 BASIC S.W.A.T. - 80 HOURS					
0680		40h 10m / week (08/30-09/03)	Vaughn Linda	SNJOSE	1.0							LETP 233.2 BASIC S.W.A.T. - 80 HOURS					
1286		40h 10m / week (10/18-10/22)	Vaughn Linda	SNJOSE	1.0							LETP 233.2 BASIC S.W.A.T. - 80 HOURS					
1292		40h 10m / week (11/29-12/03)	Vaughn Linda	SNJOSE	1.0							LETP 233.2 BASIC S.W.A.T. - 80 HOURS					
1301		40h 10m / week (08/30-09/03)	Vaughn Linda	SNJOSE	1.0							LETP 233.2 BASIC S.W.A.T. - 80 HOURS					



SECTION	DAYS	TIME	INSTRUCTOR	ROOM	UNITS	SECTION	DAYS	TIME	INSTRUCTOR	ROOM	UNITS	SECTION	DAYS	TIME	INSTRUCTOR	ROOM	UNITS
---------	------	------	------------	------	-------	---------	------	------	------------	------	-------	---------	------	------	------------	------	-------

LETP 233.7 DEFENSIVE TACTICS INSTRUCTOR

1108 40h 0m / week Vaughn Linda SNJOSE 2.0
(08/31-09/11)

LETP 234 ADVANCED OFFICER SKILLS I

1098 T 8.00am-10:10am Vaughn Linda SNJOSE 0.5
(07/06-08/24)

1100 1h 15m / week Vaughn Linda SNJOSE 0.5
(09/23-12/07)

1168 24h 0m / week Vaughn Linda SNJOSE 0.5
(08/10-08/12)

1195 8h 0m / week Vaughn Linda SNJOSE 0.5
(10/21-10/24)

1196 32h 0m / week Vaughn Linda SNJOSE 0.5
(10/27-10/30)

1712 8h 25m / week Vaughn Linda SNJOSE 0.5
(11/05-11/23)

LETP 238 TACTICAL PATROL RIFLE INSTRUCTOR

0681 40h 15m / week Vaughn Linda SNJOSE 1.0
(08/16-08/19)

LETP240.25 SUPERVISORY UPDATE

1182 20h 5m / week Vaughn Linda SNJOSE 0.5
(08/17-08/19)

1742 20h 5m / week Vaughn Linda SNJOSE 0.5
(08/21-08/23)

LETP 242 PEACE OFFICER ASSOCIATION TRAINING

0404 40h 0m / week Vaughn Linda SNJOSE 4.0
(08/16-09/17)

1037 40h 0m / week Vaughn Linda SNJOSE 4.0
(08/13-09/17)

1293 20h 0m / week Vaughn Linda SNJOSE 0.5
(10/05-10/07)

1307 28h 0m / week Vaughn Linda SNJOSE 0.5
(11/02-11/05)

1411 16h 0m / week Vaughn Linda SNJOSE 0.5
(11/29-11/30)

LETP 245 FIELD TRAINING PROGRAM

1217 38h 15m / week Vaughn Linda SNJOSE 14.0

1265 36h 20m / week Vaughn Linda SNJOSE 14.0

1761 55h 20m / week Vaughn Linda SNJOSE 16.0
(04/30-08/10)

LETP 250 ARREST AND CONTROL/DRIVING (PSP)

1211 1h 10m / week Vaughn Linda SNJOSE 0.5

LETP 254 DISPATCH FIELD TRAINING PROGRAM

0466 40h 15m / week Vaughn Linda SNJOSE 13.5



We've Got You Covered!

The Access Resource Center (ARC) offers academic counseling, specialized instruction and classroom accommodations to students with a verified disability.

- Academic & Testing Accommodations
- Counseling
- Learning Skills Classes (LNSK)
- High Tech Center (HTC)

Contact arcinfo@mpc.edu or call (831) 646-4070 • www.mpc.edu/arc

LETP 255 PUBLIC SAFETY DISPATCH

1277 24h 10m / week Vaughn Linda SNJOSE 3.0
(08/30-10/01)

1566 40h 0m / week Vaughn Linda SNJOSE 3.0
(10/04-10/29)

1744 20h 5m / week Vaughn Linda SNJOSE 3.0
(11/09-12/15)

LETP 280.1 SUPERVISOR COURSE

1179 39h 50m / week Vaughn Linda SNJOSE 2.0
(09/20-10/01)

1296 39h 50m / week Vaughn Linda SNJOSE 2.0
(12/06-12/17)

1308 39h 50m / week Vaughn Linda SNJOSE 2.0
(10/18-10/29)

1314 39h 50m / week Vaughn Linda SNJOSE 2.0
(08/02-08/13)

1746 39h 50m / week Vaughn Linda SNJOSE 2.0
(11/01-11/12)

LETP 280.2 FIELD TRAINING OFFICER

1593 40h 0m / week Vaughn Linda SNJOSE 1.0
(11/08-11/12)

LETP 280.3 FIELD TRAINING OFFICER UPDATE

1592 24h 0m / week Vaughn Linda SNJOSE 0.5
(10/11-10/13)

LETP 290 INSTRUCTOR DEVELOPMENT

1748 41h 35m / week Vaughn Linda SNJOSE 1.0
& 41h 35m / week Vaughn Linda SNJOSE
(09/13-09/17)

Learning Skills

LNSK 320 INTRODUCTORY COMPUTER SKILLS LAB

0690 MW 9:30pm-10:45pm Copeland A HSS101 1.0

LNSK 325 ASSISTIVE TECHNOLOGY APPLICATIONS

0691 3h 50m / week Copeland A Online 1.0
(09/07-12/03)

LNSK 330 LEARNING STYLES EXPLORATION

0693 0h 25m / week Lewis V STS115 0.5

LNSK 331A LEARNING STRATEGIES LAB

0958 TTh 11:00am-12:15pm Copeland A HSS101 1.0

LNSK 331B READING SKILLS DEVELOPMENT LAB

0694 TTh 9:00am-10:15am Rozman HSS102 1.0

LNSK 331C WRITING STRATEGIES LAB

0697 TTh 11:00am-12:15pm Rozman HSS102 1.0

LNSK 332 READING SKILLS DEVELOPMENT

0702 MW 9:30am-10:20am Rozman HSS102 2.0

LNSK 333 WRITING SKILLS DEVELOPMENT

0703 MW 11:00am-11:50am Rozman HSS102 2.0

SECTION	DAYS	TIME	INSTRUCTOR	ROOM	UNITS	SECTION	DAYS	TIME	INSTRUCTOR	ROOM	UNITS	SECTION	DAYS	TIME	INSTRUCTOR	ROOM	UNITS
---------	------	------	------------	------	-------	---------	------	------	------------	------	-------	---------	------	------	------------	------	-------



Mathematics

MATH 10 MATHEMATICS FOR GENERAL EDUCATION

0236	TTh	6:00pm-7:50pm	Philly G	PS104	4.0
0715	MTWTh	10:00am-10:50am	Little W	PS104	4.0
0749	4h 0m / week		Bishop E	Online	4.0

MATH 12 NUMBER SYSTEMS

0465	TTh	11:00am-12:50pm	Washburn	BMC106	4.0
------	-----	-----------------	----------	--------	-----

MATH 13 PRE-CALCULUS

0269	TTh	1:30pm-3:45pm	Bishop E	PS201	5.0
0274	7h 5m / week		Northup C	Online	5.0
		(09/13-12/03)			
0282	5h 0m / week		Catania	Online	5.0
0286	MW	11:00am-11:50am	Riordan E	Online	5.0
	&	3h 0m / week	Riordan E	Online	
0293	MW	9:00am-10:50am	Catania	PS102	5.0
	&	1h 0m / week	Catania	Online	
0294	MW	1:30pm-3:45pm	Washburn	PS102	5.0

MATH 16 ELEMENTARY STATISTICS

0212	MW	1:00pm-2:50pm	Bartow	Online	4.0
0213	4h 0m / week		Pickering	Online	4.0
0219	MW	9:00am-10:50am	Nodzenski P	Online	4.0
0223	TTh	9:00am-10:50am	Staff	PS201	4.0
0224	TTh	1:00pm-2:50pm	Staff	PS104	4.0
0232	MW	6:00pm-7:15pm	Castellani	Online	4.0
	&	1h 0m / week	Castellani	Online	
0234	MW	6:00pm-7:50pm	Shingleton J	PS201	4.0
0249	MW	11:00am-12:50pm	Iwamoto L	BMC104	4.0
0253	TTh	11:00am-12:50pm	Iwamoto L	BMC104	4.0
0254	MW	9:00am-10:50am	Hsu J.	PS201	4.0
0256	4h 0m / week		Cristobal	Online	4.0
0257	4h 0m / week		Spence L	Online	4.0
0542	4h 0m / week		Acevedo-Arre	Online	4.0
0621	TTh	11:00am-12:50pm	Hebert C	PS201	4.0
0628	MW	1:00pm-1:50pm	Lopez D	PS201	4.0
	&	2h 0m / week	Lopez D	Online	
0731	4h 45m / week		Cristobal	Online	4.0
		(09/07-12/10)			

MATH 17 FINITE MATHEMATICS

0296	TTh	6:00pm-7:50pm	Hsu J.	PS201	4.0
0759	4h 0m / week		Spence L	Online	4.0

MATH 18 CALCULUS AND ANALYTIC GEOMETRY FOR BIOLOGY/SOC SCI/BUSINESS

0299	4h 0m / week		Washburn	Online	4.0
0643	MW	11:00am-12:50pm	Washburn	PS201	4.0

LNSK 341A BEGINNING READING STRATEGIES LAB

0997	TTh	12:30pm-2:20pm	Rozman	HSS102	1.0
		(09/07-12/09)			

LNSK 341B INTERMEDIATE READING STRATEGIES LAB

0999	TTh	12:30pm-2:20pm	Rozman	HSS102	1.0
		(09/07-12/09)			

LNSK 342A BEGINNING WRITING STRATEGIES LAB

1000	MW	12:30pm-1:45pm	Rozman	HSS102	1.0
------	----	----------------	--------	--------	-----

LNSK 342B INTERMEDIATE WRITING STRATEGIES LAB

1010	MW	12:30pm-1:45pm	Rozman	HSS102	1.0
------	----	----------------	--------	--------	-----

LNSK 343A BEGINNING MATH STRATEGIES LAB

0699	MW	11:00am-12:15pm	Copeland A	HSS101	1.0
------	----	-----------------	------------	--------	-----

LNSK 343B INTERMEDIATE MATH STRATEGIES LAB

0042	MW	11:00am-12:15pm	Copeland A	HSS101	1.0
------	----	-----------------	------------	--------	-----

LNSK 347A BEGINNING ASSISTIVE TECHNOLOGY PROJECTS

0692	3h 0m / week		Copeland A	Online	1.0
------	--------------	--	------------	--------	-----

LNSK 347B INTERMEDIATE ASSISTIVE TECHNOLOGY PROJECTS

0734	3h 0m / week		Copeland A	Online	1.0
------	--------------	--	------------	--------	-----

LNSK 410 JOB READINESS

0706	20h 0m / week		Phillips SA	HOPE	0.0
1248	20h 0m / week		Jaros R	NBI	0.0

Library Services

LIBR 50 INTRODUCTION TO LIBRARY AND RESEARCH SKILLS

0029	3h 0m / week		Easton	Online	1.0
0038	3h 0m / week		Easton	Online	1.0
0226	3h 0m / week		Duong	Online	1.0
0599	3h 0m / week		Thomas E	Online	1.0
0600	3h 0m / week		Tozier G	Online	1.0
1101	F	10:00am-11:50am	Tozier G	LTC203	1.0
	&	4h 35m / week	Tozier G	Online	
		(10/11-12/03)			

Linguistics

LING 10 FOUNDATIONS OF LANGUAGE

0396	4h 0m / week		Abend	Online	3.0
------	--------------	--	-------	--------	-----

LING 15 INTRODUCTION TO LINGUISTICS

0013	3h 0m / week		Abend	Online	3.0
0051	3h 0m / week		Abend	Online	3.0

LING 25 INTRODUCTION TO LANGUAGE AND GENDER

1404	3h 0m / week		Abend	Online	3.0
------	--------------	--	-------	--------	-----

LING 30 INTRODUCTION TO THE HISTORY OF THE ENGLISH LANGUAGE

0986	3h 0m / week		Abend	Online	3.0
------	--------------	--	-------	--------	-----

LING 45 INTRODUCTION TO LANGUAGE AND SOCIETY

0766	6h 20m / week		Abend	Online	3.0
		(10/11-12/03)			

SECTION	DAYS	TIME	INSTRUCTOR	ROOM	UNITS	SECTION	DAYS	TIME	INSTRUCTOR	ROOM	UNITS	SECTION	DAYS	TIME	INSTRUCTOR	ROOM	UNITS
---------	------	------	------------	------	-------	---------	------	------	------------	------	-------	---------	------	------	------------	------	-------

MATH 20A CALCULUS WITH ANALYTIC GEOMETRY I

0644	MW &	10:00am-10:50am 3h 0m / week	Lopez D Lopez D	BMC105	4.0
0645		5h 0m / week	Cristobal	Online	4.0
0857	MW	11:00am-1:15pm	Staff	PS104	4.0

MATH 20B CALCULUS WITH ANALYTIC GEOMETRY II

0646	MTWThF	9:00am-9:50am	Pickering	PS104	4.0
0647	MTTh &	11:00am-11:50am 2h 0m / week	Catania Catania	Online	4.0
0886	TTh	1:30pm-3:45pm	Iwamoto L	BMC104	4.0

MATH 20C CALCULUS OF SEVERAL VARIABLES

0209	TTh	6:00pm-8:15pm	Lake E	Online	4.0
0648	MTWThF	11:00am-11:50am	Pickering	PS102	4.0

MATH 31 LINEAR ALGEBRA

1001	MTWTh	12:00pm-12:50pm	Hsu J.	PS102	4.0
------	-------	-----------------	--------	-------	-----

MATH 32 DIFFERENTIAL EQUATIONS

0301	MTWTh	10:00am-10:50am	Cristobal	BMC104	4.0
------	-------	-----------------	-----------	--------	-----

MATH 260 PRE-STATISTICS

0431	MW	1:30pm-3:45pm	Hebert C	PS104	5.0
------	----	---------------	----------	-------	-----

MATH 261 BEGINNING ALGEBRA

0292	MW	6:00pm-8:15pm	Millan S	TBD	5.0
0657	MW	8:30am-10:45am	Nguyen T	BMC106	5.0
0660		5h 0m / week	Catania	Online	5.0

MATH 263 INTERMEDIATE ALGEBRA AND COORDINATE GEOMETRY

0295	TTh	8:30am-10:45am	Nguyen T	BMC106	5.0
0661		5h 0m / week	Nguyen T	Online	5.0
0673		5h 0m / week	Bishop E	Online	5.0

MATH 313 SUPPORT FOR PRE-CALCULUS

0410		2h 0m / week	Catania	Online	2.0
0411		2h 0m / week	Washburn	Online	2.0

MATH 316 SUPPORT FOR ELEMENTARY STATISTICS

0405	MW	2:00pm-2:50pm	Lopez D	PS201	2.0
0406	F	9:00am-10:50am	Hsu J.	PS201	2.0
0624	F	11:00am-12:50pm	Hebert C	PS201	2.0

MATH 440 SUPERVISED TUTORING: MATHEMATICS

0682		18h 0m / week	Lake E	TBD	0.0
------	--	---------------	--------	-----	-----

Medical Assisting

MEDA 100 INTRODUCTION TO HEALTH CAREERS

0198		1h 45m / week (10/11-12/10)	Gensel G	Online	1.0
0684		1h 45m / week (08/13-10/08)	Gensel G	Online	1.0

MEDA 101 ETHICS, LAW AND IT SECURITY IN THE MEDICAL OFFICE

0277		3h 0m / week & 3h 0m / week	Gensel G Singh D	Online	3.0
------	--	--------------------------------	---------------------	--------	-----

MEDA 105 MEDICAL TERMINOLOGY

0687		4h 0m / week	Bell M	Online	4.0
0688		4h 0m / week	Bell M	Online	4.0
1124	MW	12:30pm-2:20pm	Gensel G	Online	4.0

MEDA 110 MEDICAL OFFICE MANAGEMENT

0278	TTh	1:30pm-3:45pm	Gensel G	Online	3.0
------	-----	---------------	----------	--------	-----

MEDA 112 MEDICAL OFFICE COMPUTER APPLICATIONS

1005		4h 0m / week	Bell M	Online	2.0
------	--	--------------	--------	--------	-----

MEDA 113 MEDICAL PROCEDURE CODING

0279		5h 0m / week	Carlson S	Online	3.0
------	--	--------------	-----------	--------	-----

MEDA 114 MEDICAL INSURANCE MANAGEMENT

1003		3h 0m / week	Bell M	Online	2.0
------	--	--------------	--------	--------	-----

MEDA 116 MEDICAL DOCUMENTATION AND TRANSCRIPTION

1006		4h 0m / week	Gensel G	Online	2.0
------	--	--------------	----------	--------	-----

MEDA 118 PHARMACOLOGY AND HUMAN DISEASES

1004		3h 0m / week	Bell M	Online	3.0
------	--	--------------	--------	--------	-----

MEDA 120 MEDICAL ASSISTING CLINICAL TECHNIQUES I

Sections below offered at the MPC Education Center in Marina:

1126	T	10:30am-12:20pm	Bell M	Online	3.0
	& T	1:30pm-4:20pm	Bell M	MT2	

MEDA 121 MEDICAL ASSISTING CLINICAL TECHNIQUES II

Sections below offered at the MPC Education Center in Marina:

0281	M	10:30am-12:20pm	Bell M	Online	3.0
	& M	1:45pm-4:35pm	Bell M	MT2	

MEDA 122 MEDICAL ASSISTING CLINICAL TECHNIQUES III

Sections below offered at the MPC Education Center in Marina:

1536	W	10:30am-12:20pm	Bell M	Online	3.0
	& W	1:45pm-4:35pm	Bell M	MT2	

MEDA 130 MEDICAL ASSISTING EXTERNSHIP

1537		9h 25m / week	Bell M	CLINIC	3.0
------	--	---------------	--------	--------	-----

LAUNCH YOUR
Health Career
at MPC



MPC dental & medical assisting graduates are *in demand* with local employers!

MPC offers a variety of programs for essential healthcare workers

- Community Health Worker
- Dental Assisting
- Medical Assisting
- Medical Insurance and Coding
- Medical Office Administration

Instruction combines online and in-person instruction.

Get started your new career in a growing industry by enrolling for classes at MPC!

Visit www.mpc.edu to learn more!

SECTION	DAYS	TIME	INSTRUCTOR	ROOM	UNITS	SECTION	DAYS	TIME	INSTRUCTOR	ROOM	UNITS	SECTION	DAYS	TIME	INSTRUCTOR	ROOM	UNITS
Music - Commercial																	
MUSC 14A RECORDING ARTS I																	
0713	TTh &	1:00pm-1:50pm & 3h 0m / week	Bryant Bryant	Online	3.0												
MUSC 14B RECORDING ARTS II																	
1329	TTh &	1:00pm-1:50pm & 3h 0m / week	Bryant Bryant	Online	3.0												
Music																	
MUSI 1 MUSIC APPRECIATION																	
0708		3h 0m / week	Durst A	Online	3.0												
MUSI 2 INTRODUCTION TO BROADWAY MUSICALS																	
0380		3h 0m / week	Durst A	Online	3.0												
MUSI 3 INTRODUCTION TO AMERICAN MUSIC																	
1171		3h 0m / week	Durst A	Online	3.0												
MUSI 10A MUSIC THEORY AND MUSICIANSHIP I																	
0709	MW &	9:00am-9:50am & 3h 0m / week	Durst A Durst A	Online	4.0												
MUSI 10B MUSIC THEORY AND MUSICIANSHIP II																	
0252	MW &	10:30am-11:20am & 3h 0m / week	Durst A Durst A	Online	4.0												
MUSI 10C MUSIC THEORY AND MUSICIANSHIP III																	
0040	MW &	10:30am-11:20am & 3h 0m / week	Durst A Durst A	Online	4.0												
MUSI 25 APPLIED MUSIC																	
0183	M &	3:00pm-4:05pm & 1h 10m / week (08/30-12/06)	Durst A Durst A	Online	0.5												
MUSI 35 STRING ORCHESTRA																	
0480	M	7:00pm-9:50pm	Dally	MU101	1.0												
MUSI 40 VOICE FUNDAMENTALS I																	
0718	TTh	2:00pm-2:50pm	Edison K	MU119	1.0												
MUSI 41 VOICE FUNDAMENTALS II																	
1184	TTh	2:00pm-2:50pm	Edison K	MU119	1.0												
MUSI 48A GUITAR I																	
1131	T &	6:30pm-7:45pm & 1h 25m / week	Collins P Collins P	Online	1.0												
MUSI 48B GUITAR II																	
1132	T &	6:30pm-7:45pm & 1h 25m / week	Collins P Collins P	Online	1.0												
MUSI 50A PIANO I																	
0720	TTh	11:00am-11:50am	Durst A	Online	1.0												
MUSI 50B PIANO II																	
0722	TTh	11:00am-11:50am	Durst A	Online	1.0												
MUSI 50C PIANO III																	
0184	TTh	11:00am-11:50am	Durst A	Online	1.0												
MUSI 50D PIANO IV																	
0211	TTh	11:00am-11:50am	Durst A	Online	1.0												
MUSI 495 SPECIAL TOPICS IN MUSIC																	
0216	T &	6:30pm-7:45pm & 0h 25m / week	Collins P Collins P	Online	0.0												
0308	TTh	2:00pm-2:50pm	Edison K	MU119	0.0												
0481	M	7:00pm-8:50pm	Dally	MU101	0.0												



SECTION	DAYS	TIME	INSTRUCTOR	ROOM	UNITS	SECTION	DAYS	TIME	INSTRUCTOR	ROOM	UNITS	SECTION	DAYS	TIME	INSTRUCTOR	ROOM	UNITS
---------	------	------	------------	------	-------	---------	------	------	------------	------	-------	---------	------	------	------------	------	-------

Explore the Science of Health & Wellness

Most of us are lucky enough to choose what we eat, but what should we choose?

Through MPC's Nutrition and Dietetics program you will gain the skills and knowledge necessary for further study and career opportunities in fields related to wellness and nutrition - a growing industry with real impact!



NUTRITION DEPARTMENT MONTEREY PENINSULA COLLEGE

Nursing

NURS 52A NURSING I

0854	MT	9:00am-10:50am	Kragelund	IC201	8.5
	& MT	9:00am-10:50am	Staff	IC201	
	&	13h 25m / week	Kragelund	IC201	
	&	13h 25m / week	Staff	IC201	

NURS 52C NURSING III

0859	MT	9:00am-11:15am	Rondez C	IC204	9.5
	&	13h 25m / week	Hanna	IC204	
	&	13h 25m / week	Miranda M	IC204	
	&	13h 25m / week	Rondez C	IC204	
	&	13h 25m / week	Sullivan E	IC204	

NURS 55 APPLIED FOUNDATIONS OF NURSING

1143	MT	9:00am-10:50am	Kragelund	IC201	3.0
	&	5h 0m / week	Kragelund	IC201	

NURS 65L NURSING ROLE TRANSITION LAB

0486	3h 0m / week	Rondez C	NU105	1.0
------	--------------	----------	-------	-----

NURS 100 PHARMACOLOGY FOR NURSING

0872	T	9:00am-11:50am	Trapl C	Online	2.0
1154	T	9:00am-11:50am	Trapl C	Online	2.0

NURS 150 NURSING PROGRAM READINESS

0357	2h 25m / week	Hanna	Online	1.5
0399	2h 25m / week	Hanna	Online	1.5
0932	2h 25m / week	Hanna	Online	1.5

NURS 180A INTRODUCTION TO PROFESSIONAL SKILLS DEVELOPMENT

0746	3h 0m / week	Hanna	Online	1.0
------	--------------	-------	--------	-----

NURS 180C INTERMEDIATE PROFESSIONAL SKILLS DEVELOPMENT

0748	3h 0m / week	Hanna	Online	1.0
------	--------------	-------	--------	-----

NURS 204 SUPERVISED NURSING SKILLS LAB I

1545	12h 0m / week	Miranda M	NU105	4.0	
	&	12h 0m / week	Rondez C	NU105	
1546	6h 0m / week	Miranda M	NU105	2.0	
	&	6h 0m / week	Rondez C	NU105	

NURS 206 SUPERVISED NURSING SKILLS LAB III

1256	6h 0m / week	Miranda M	NU105	2.0	
	&	6h 0m / week	Rondez C	NU105	
1257	12h 0m / week	Miranda M	NU105	4.0	
	&	12h 0m / week	Rondez C	NU105	

Nutrition And Food

NUTF 1 NUTRITION

0520	3h 0m / week	Lord V	Online	3.0
0521	3h 0m / week	Lord V	Online	3.0
0998	6h 20m / week (10/11-12/03)	Lord V	Online	3.0
1678	6h 20m / week (10/11-12/03)	Lord V	Online	3.0

NUTF 2 INTRODUCTION TO CAREERS IN NUTRITION, DIETETICS, AND FOOD

0012	1h 0m / week	Lord V	Online	1.0
------	--------------	--------	--------	-----

NUTF 3 NUTRITION ISSUES AND CONTROVERSIES

0926	2h 0m / week	Lord V	Online	2.0
------	--------------	--------	--------	-----

NUTF 25 BASIC MEDICAL NUTRITION THERAPY AND MODIFIED DIETS

1055	3h 0m / week	Lord V	Online	3.0
------	--------------	--------	--------	-----

NUTF 35 FOOD SERVICE I: PRODUCTION, SANITATION, AND FOOD SAFETY

0337	3h 0m / week	Lord V	Online	3.0
------	--------------	--------	--------	-----

Oceanography

OCEN 2 INTRODUCTORY OCEANOGRAPHY

0738	3h 0m / week	Hochstaedter	Online	3.0
0768	3h 0m / week	Hochstaedter	Online	3.0

OCEN 2L INTRODUCTORY OCEANOGRAPHY LAB

0740	W	8:00am-10:50am	Hochstaedter	ONLINE	1.0
0776	W	11:00am-1:50pm	Hochstaedter	ONLINE	1.0

Older Adult Program

ART 431 DRAWING AND COMPOSITION

0954	5h 5m / week (08/31-11/04)	Bispo	Online	0.0
------	-------------------------------	-------	--------	-----

HORT 425 SUCCESSFUL GARDENING TECHNIQUES

0957	4h 15m / week (08/31-10/21)	Hofmann J	Online	0.0
------	--------------------------------	-----------	--------	-----

HEALTHY BODY HEALTHY MIND

Now offering numerous classes on campus and online, based on local health guidelines.

- Athletic Conditioning & Training
- Collegiate Athletics, Weight Training
- Dance, Golf, Swimming, Tennis, & Pickleball
- Aerobic Fitness (Zumba) & Yoga



Personal Development

PERS 10 COLLEGE SUCCESS

0458	M	4:30pm-5:45pm	Calima	PGHS	1.0
		(08/23-11/08)			
0459	W	6:15pm-7:40pm	Calima	CHS	1.0
		(09/15-11/17)			
0539		2h 10m / week	De Soto A	Online	1.0
		(10/11-12/03)			
0989	TTh	10:00am-11:35am	Ballard	Online	1.0
		(08/24-09/23)			
0990		3h 20m / week	Boes S	Online	1.0
		(08/24-09/23)			
0992	MW	9:00am-10:35am	Fasheh J	Online	1.0
		(08/23-09/22)			
0995	M	11:00am-11:50am	Giammanco	Online	1.0

PERS 50 MAKING COLLEGE COUNT

0041	F	9:00am-11:50am	Walker D	Online	3.0
0772	MW	9:30am-10:45am	Gonzalez E.	Online	3.0
1002	TTh	12:30pm-1:45pm	Calima	Online	3.0
1538		6h 20m / week	De Soto A	Online	3.0
		(10/11-12/03)			

PERS 51 CAREER AND LIFE PLANNING

0462		3h 0m / week	Stratton J	Online	3.0
0470	TF	1:35pm-3:05pm	Stratton J	MRNHS	3.0
		(08/31-12/17)			

PERS 59 STUDY SKILLS FOR SUCCESS

1008	MW	9:00am-10:25am	Fasheh J	Online	1.0
		(09/27-10/27)			
1009	TTh	10:00am-11:25am	Ballard	Online	1.0
		(09/28-10/28)			

PERS 71 CAREER ASSESSMENT AND EXPLORATION

1011		3h 20m / week	Mann A	Online	1.0
		(11/01-12/01)			
1012	TTh	10:00am-11:50am	Mann A	Online	1.0
		(11/02-12/02)			

Philosophy

PHIL 2 INTRODUCTION TO PHILOSOPHY

0758	MW	9:30am-10:45am	Weber T	Online	3.0
1289		3h 0m / week	Weber T	Online	3.0

PHIL 4 MORAL ISSUES

0760	MW	11:00am-12:15pm	Weber T	Online	3.0
------	----	-----------------	---------	--------	-----

PHIL 6 INTRODUCTION TO LOGIC

0761	TTh	12:30pm-1:45pm	Weber T	Online	3.0
------	-----	----------------	---------	--------	-----

PHIL 8 INTRODUCTION TO WORLD RELIGIONS

0463		3h 0m / week	Provost	Online	3.0
------	--	--------------	---------	--------	-----

PHIL 13 INTRODUCTION TO EASTERN PHILOSOPHY

0765		3h 0m / week	Provost	Online	3.0
------	--	--------------	---------	--------	-----

PHIL 40 INTRODUCTION TO FEMINIST THEORY

0743		3h 0m / week	Davis D	Online	3.0
------	--	--------------	---------	--------	-----

PHSO 2 HUMAN PHYSIOLOGY LAB

1278	W	7:00pm-9:50pm	Sanculi D	LS107	2.0
	&	3h 0m / week	Sanculi D	Online	

Physical Education

PHED 2A GOLF I

0774	T	9:30am-12:20pm	Russo J	PE201	1.0
------	---	----------------	---------	-------	-----

PHED 2B GOLF II

0956	Th	9:30am-12:20pm	Russo J	PE201	1.0
------	----	----------------	---------	-------	-----

PHED 2C GOLF III

0836	Th	9:30am-12:20pm	Russo J	PE201	1.0
------	----	----------------	---------	-------	-----

PHED 2D GOLF IV

0867	Th	9:30am-12:20pm	Russo J	PE201	1.0
------	----	----------------	---------	-------	-----

PHED 5A TENNIS I

0439	TTh	11:00am-12:15pm	Tran	TCTS	1.0
------	-----	-----------------	------	------	-----

PHED 5B TENNIS II

0440	TTh	11:00am-12:15pm	Tran	TCTS	1.0
------	-----	-----------------	------	------	-----

PHED 5D TENNIS III

0442	TTh	11:00am-12:15pm	Tran	TCTS	1.0
------	-----	-----------------	------	------	-----

PHED 5E TENNIS IV

0444	TTh	11:00am-12:15pm	Tran	TCTS	1.0
------	-----	-----------------	------	------	-----

SECTION	DAYS	TIME	INSTRUCTOR	ROOM	UNITS	SECTION	DAYS	TIME	INSTRUCTOR	ROOM	UNITS	SECTION	DAYS	TIME	INSTRUCTOR	ROOM	UNITS
PHED 9A	PICKLBALL I					PFIT 10A	BEGINNING WEIGHT TRAINING					PFIT 16D	TAI CHI IV				
0446	TTh	9:30am-10:45am	Tran	T CTS	1.0	0034	3h 0m / week		Staff	FTC206	1.0	0795	TTh	9:30am-10:45am	Scott-Behren	DA101	1.0
PHED 9B	PICKLEBALL II					0241	TTh	8:00am-9:15am	Moldenhauer	FTC206	1.0	PFIT 17A	YOGA I				
0447	TTh	9:30am-10:45am	Tran	T CTS	1.0	PFIT 10B	INTERMEDIATE WEIGHT TRAINING					0807	MWF	7:00am-7:50am	Fujii K	DA101	1.0
PHED 9C	PICKLEBALL III					0054	3h 0m / week		Staff	FTC206	1.0	0916	MWF	8:30am-9:20am	Benavente	Online	1.0
0450	TTh	9:30am-10:45am	Tran	T CTS	1.0	PFIT 10C	ADVANCED WEIGHT TRAINING					1151	3h 0m / week		Smith A	Online	1.0
PHED 9D	PICKLEBALL IV					0060	3h 0m / week		Staff	FTC206	1.0	PFIT 17B	YOGA II				
0451	TTh	9:30am-10:45am	Tran	T CTS	1.0	PFIT 16A	TAI CHI I					0880	MWF	7:00am-7:50am	Fujii K	DA101	1.0
PHED 12B	COMPETITIVE SWIMMING I					0805	TTh	9:30am-10:45am	Scott-Behren	DA101	1.0	0917	MWF	8:30am-9:20am	Benavente	Online	1.0
0452	MW	6:00am-6:50am	Osgood S	POOL	1.0	PFIT 16B	TAI CHI II					0919	3h 0m / week		Smith A	Online	1.0
	& TTh	6:00am-6:50am	Smith A	POOL		1284	TTh	9:30am-10:45am	Scott-Behren	DA101	1.0	PFIT 17C	YOGA III				
PHED 12C	COMPETITIVE SWIMMING II					PFIT 16C	TAI CHI III					0796	MWF	7:00am-7:50am	Fujii K	DA101	1.0
0454	MW	6:00am-6:50am	Osgood S	POOL	1.0	0787	TTh	9:30am-10:45am	Scott-Behren	DA101	1.0	0815	3h 0m / week		Smith A	Online	1.0
	& MW	6:00am-6:50am	Smith A	POOL							0922	MWF	8:30am-9:20am	Benavente	Online	1.0	

PHED 12D	COMPETITIVE SWIMMING III				
0455	MW	6:00am-6:50am	Osgood S	POOL	1.0
	& TTh	6:00am-6:50am	Smith A	POOL	
PHED 12E	COMPETITIVE SWIMMING IV				
0456	MW	6:00am-6:50am	Osgood S	POOL	1.0
	& TTh	6:00am-6:50am	Smith A	POOL	
PHED 22A	INTRODUCTION TO BASKETBALL				
1498	TTh	11:00am-12:15pm	Spiering	PE201	1.0
PHED 22B	INTERMEDIATE BASKETBALL				
0773	TTh	11:00am-12:15pm	Spiering	PE201	1.0
PHED 22C	INTERMEDIATE/ADVANCED BASKETBALL				
1346	TTh	11:00am-12:15pm	Spiering	PE201	1.0
PHED 22D	ADVANCED BASKETBALL				
0036	TTh	11:00am-12:15pm	Spiering	PE201	1.0
PHED 24A	BEACH VOLLEYBALL I				
0853	TTh	2:00pm-4:05pm	Moore K	TBD	1.0
		(08/17-11/04)			
PHED 24B	BEACH VOLLEYBALL II				
0182	TTh	2:00pm-4:05pm	Moore K	TBD	1.0
		(08/17-11/04)			

Physical Fitness

PFIT 2	CORE FITNESS TRAINING				
0061	3h 0m / week		Moore K	FTC206	1.0
PFIT 6	CROSS-TRAINING				
0064	3h 0m / week		Villagrana M	FTC206	1.0
PFIT 7	DISTANCE TRAINING				
0066	3h 0m / week		Carroll M	FTC206	1.0
PFIT 8	AEROBIC CONDITIONING				
0069	3h 0m / week		Phillips D	FTC206	1.0
PFIT 9	PERSONAL FITNESS				
0082	3h 0m / week		Spiering	FTC206	1.0

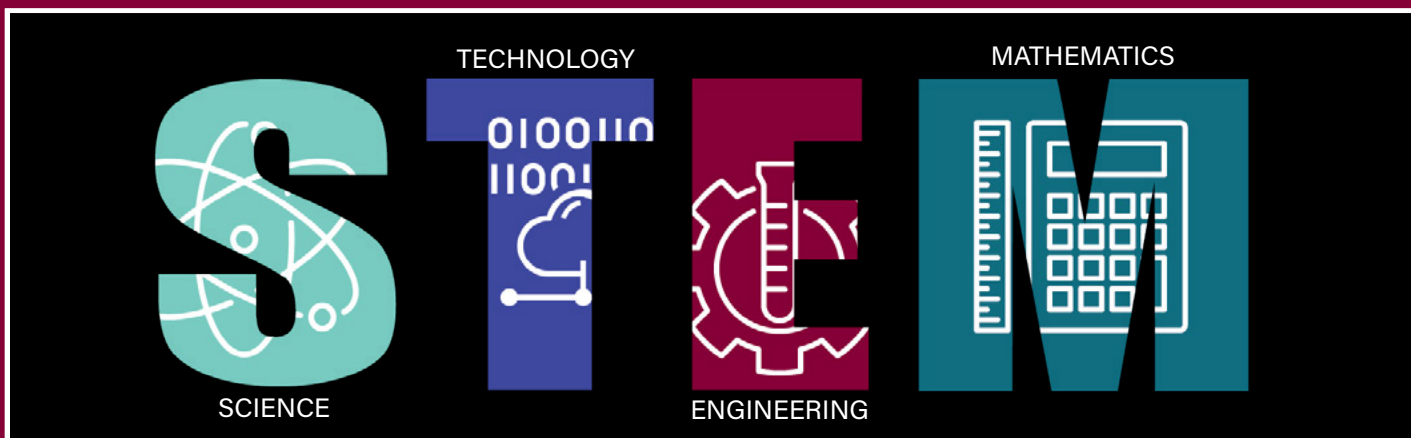


SECTION	DAYS	TIME	INSTRUCTOR	ROOM	UNITS	SECTION	DAYS	TIME	INSTRUCTOR	ROOM	UNITS	SECTION	DAYS	TIME	INSTRUCTOR	ROOM	UNITS
PFIT 17D	YOGA IV																
0830	MWF	7:00am-7:50am	Fujii K	DA101	1.0												
0865		3h 0m / week	Smith A	Online	1.0												
0924	MWF	8:30am-9:20am	Benavente	Online	1.0												
PFIT 18A	AEROBIC FITNESS I																
0309	MWF	8:00am-8:50am	Fujii K	DA101	1.0												
1153	MWF	5:30pm-6:20pm	Benavente	Online	1.0												
PFIT 18B	AEROBIC FITNESS II																
0310	MWF	8:00am-8:50am	Fujii K	DA101	1.0												
0925	MWF	5:30pm-6:20pm	Benavente	Online	1.0												
PFIT 18C	AEROBIC FITNESS III																
0318	MWF	8:00am-8:50am	Fujii K	DA101	1.0												
0893	MWF	5:30pm-6:20pm	Benavente	Online	1.0												
PFIT 18D	AEROBIC FITNESS IV																
0319	MWF	8:00am-8:50am	Fujii K	DA101	1.0												
0918	MWF	5:30pm-6:20pm	Benavente	Online	1.0												
PFIT 20	CIRCUIT TRAINING																
0062		3h 0m / week	Peters D	FTC206	1.0												
PFIT 21A	FLEXIBILITY AND RELAXATION TECHNIQUES I																
0819	MW	12:30pm-1:45pm	Carroll M	DA101	1.0												
PFIT 21B	FLEXIBILITY AND RELAXATION TECHNIQUES II																
0927	MW	12:30pm-1:45pm	Carroll M	DA101	1.0												
PFIT 21C	FLEXIBILITY AND RELAXATION TECHNIQUES III																
0730	MW	12:30pm-1:45pm	Carroll M	DA101	1.0												
PFIT 22A	FITNESS THROUGH SWIMMING I																
0408	MW	9:30am-10:20am	Osgood S	POOL	1.0												
	& TTh	9:30am-10:20am	Smith A	POOL													
0420	MW	11:00am-11:50am	Osgood S	POOL	1.0												
	& TTh	11:00am-11:50am	Smith A	POOL													
0426	MW	12:30pm-1:20pm	Osgood S	POOL	1.0												
	& TTh	12:30pm-1:20pm	Smith A	POOL													
PFIT 22B	FITNESS THROUGH SWIMMING II																
0409	MW	9:30am-10:20am	Osgood S	POOL	1.0												
	& TTh	9:30am-10:20am	Smith A	POOL													
0421	MW	11:00am-11:50am	Osgood S	POOL	1.0												
	& TTh	11:00am-11:50am	Smith A	POOL													
0427	MW	12:30pm-1:20pm	Osgood S	POOL	1.0												
	& TTh	12:30pm-1:20pm	Smith A	POOL													
PFIT 22C	FITNESS THROUGH SWIMMING III																
0418	MW	9:30am-10:20am	Osgood S	POOL	1.0												
	& TTh	9:30am-10:20am	Smith A	POOL													
0423	MW	11:00am-11:50am	Osgood S	POOL	1.0												
	& TTh	11:00am-11:50am	Smith A	POOL													
0429	MW	12:30pm-1:20pm	Osgood S	POOL	1.0												
	& TTh	12:30pm-1:20pm	Smith A	POOL													
PFIT 22D	FITNESS THROUGH SWIMMING IV																
0419	MW	9:30am-10:20am	Osgood S	POOL	1.0												
	& TTh	9:30am-10:20am	Smith A	POOL													
0424	MW	11:00am-11:50am	Osgood S	POOL	1.0												
	& TTh	11:00am-11:50am	Smith A	POOL													
0430	MW	12:30pm-1:20pm	Osgood S	POOL	1.0												
	& TTh	12:30pm-1:20pm	Smith A	POOL													
PFIT 23A	FUNCTIONAL FITNESS I																
0449	MW	9:30am-10:45am	Moldenhauer	DA101	1.0												
PFIT 23B	FUNCTIONAL FITNESS II																
0245	MW	9:30am-10:45am	Moldenhauer	DA101	1.0												
PFIT 23C	FUNCTIONAL FITNESS III																
0855	MW	9:30am-10:45am	Moldenhauer	DA101	1.0												
PFIT 50	INDEPENDENT FITNESS AND TESTING PROGRAM																
0063		3h 0m / week	Phillips D	Online	1.0												

Physics

PHYS 2A GENERAL PHYSICS I

0838	MWF	11:00am-11:50am	Jewell L	PS207	4.0
	& Th	9:30am-12:20pm	Jewell L	PS107	
	& T	11:00am-11:50am	Jewell L	PS207	
0839	MWF	11:00am-11:50am	Jewell L	PS207	4.0
	& Th	2:00pm-4:50pm	Jewell L	PS107	
	& T	11:00am-11:50am	Jewell L	PS207	



STEM PROVIDES A SOLID FOUNDATION FOR TRANSFER & REWARDING CAREERS!

Data Scientist
 Software Developer
 Mechanical Engineer
 Cartographer
 Applied Mathematician
 Computer Network Architect

Doctor
 Database Administrator
 Biomedical Engineer
 Environmental Engineer
 Forensic Science Technician
 Geoscientist

Epidemiologist
 Civil Engineer
 Biochemist
 IT Manager
 Actuary
 Statistician

SECTION	DAYS	TIME	INSTRUCTOR	ROOM	UNITS	SECTION	DAYS	TIME	INSTRUCTOR	ROOM	UNITS	SECTION	DAYS	TIME	INSTRUCTOR	ROOM	UNITS
---------	------	------	------------	------	-------	---------	------	------	------------	------	-------	---------	------	------	------------	------	-------



EVERYONE DESERVES THE OPPORTUNITY TO ATTEND COLLEGE



The MPC Foundation provides opportunities for local students to attend college, and helps ensure their experience is the best it can be.

With generous contributions from our donors and business partners, we support MPC students through scholarships, textbook and emergency assistance, and our signature College Incentive Program (CIP). Since 2015, CIP has helped more than 330 local youth who otherwise may never have attended college to enroll full-time at MPC.

Invest in the power of education!
mpcfoundation.org

PHYS 3A	SCIENCE AND ENGINEERING PHYSICS I				
0840	MWF & T & T	10:00am-10:50am 1:00pm-3:50pm 10:00am-10:50am	Jewell L Jewell L Jewell L	PS207 PS107 PS207	4.0
0841	MWF & W & T	10:00am-10:50am 2:00pm-4:50pm 10:00am-10:50am	Jewell L Jewell L Jewell L	PS207 PS107 PS207	4.0
PHYS 3B	SCIENCE AND ENGINEERING PHYSICS II				
1345	4h 0m / week & M	2:00pm-4:50pm	Wei Wei	Online	4.0
PHYS 3C	SCIENCE AND ENGINEERING PHYSICS III				
0754	4h 0m / week & Th	2:00pm-4:50pm	Wei Wei	Online	4.0
PHYS 10	INTRODUCTION TO PHYSICS				
0843	3h 0m / week & F	9:00am-11:50am	Wei Wei	Online	4.0

Physiology					
PHSO 1	HUMAN PHYSIOLOGY				
0340	MW	12:30pm-1:45pm	Ambaw A	Online	3.0
1130	MW	5:30pm-6:45pm	Sanculi D	Online	3.0
1159	3h 0m / week		Ambaw A	Online	3.0
1216	3h 0m / week		Sanculi D	Online	3.0
PHSO 2	HUMAN PHYSIOLOGY LAB				
0193	M &	9:00am-11:50am 3h 0m / week	Ambaw A Ambaw A	Online Online	2.0
0844	W &	9:00am-11:50am 3h 0m / week	Ambaw A Ambaw A	Online Online	2.0
0845	W &	2:00pm-4:50pm 3h 0m / week	Patel R Patel R	LS107 Online	2.0
1160	M &	2:00pm-4:50pm 3h 0m / week	Ambaw A Ambaw A	Online Online	2.0

Political Science					
POLS 1	INTRODUCTION TO AMERICAN GOVERNMENT AND POLITICS				
0055	3h 0m / week		Blanchard L	Online	3.0
0187	6h 20m / week (10/11-12/03)		Van Zwaluwen	Online	3.0
0846	3h 0m / week		Banks	Online	3.0
0847	3h 0m / week		Serena D	Online	3.0
0849	3h 0m / week		Banks	Online	3.0
0850	3h 0m / week		Banks	Online	3.0
0851	3h 0m / week		Blanchard L	Online	3.0
POLS 4	INTRODUCTION TO INTERNATIONAL RELATIONS				
0230	3h 0m / week		Blanchard L	Online	3.0
POLS 5	POLITICS OF DEVELOPING COUNTRIES				
1053	3h 0m / week		Blanchard L	Online	3.0

SECTION	DAYS	TIME	INSTRUCTOR	ROOM	UNITS	SECTION	DAYS	TIME	INSTRUCTOR	ROOM	UNITS	SECTION	DAYS	TIME	INSTRUCTOR	ROOM	UNITS
---------	------	------	------------	------	-------	---------	------	------	------------	------	-------	---------	------	------	------------	------	-------



- Priority Registration
- Grants
- Tutoring
- Lending Library

EOPS

EXTENDED OPPORTUNITY PROGRAMS & SERVICES

- Book Voucher
- Calculators
- Laptop
- Counseling

For more information or to enroll, call (831) 646-4247 or email eopsemail@mpc.edu

POLS 10	GENDER IN AMERICAN POLITICS
0072	3h 0m / week Blanchard L Online 3.0
POLS 18	LATINOS IN AMERICAN GOVERNMENT
0858	MW 9:00am-10:15am Serena D Online 3.0

Psychology

PSYC 1	GENERAL PSYCHOLOGY
0057	3h 0m / week Kotecki A Online 3.0
0058	3h 0m / week Kotecki A Online 3.0
0155	3h 0m / week Kotecki A Online 3.0
0712	MW 12:30pm-1:45pm Lachman L SS102 3.0
0862	3h 0m / week Austin T Online 3.0
0864	MW 11:00am-12:15pm Lachman L SS102 3.0
0866	MW 2:00pm-3:15pm Lachman L SS102 3.0
1567	TTh 11:00am-12:15pm Austin T SS205 3.0
PSYC 3	INTRODUCTION TO SOCIAL PSYCHOLOGY
0142	3h 0m / week Whitworth R Online 3.0
1165	3h 0m / week Whitworth R Online 3.0
1354	TTh 12:30pm-1:45pm Austin T SS205 3.0
PSYC 6	PSYCHOLOGY OF WOMEN
0523	6h 20m / week Luke J Online 3.0 (10/11-12/03)
1036	T 11:00am-12:15pm Luke J SS201 3.0 & 3h 0m / week Luke J Online

PSYC 10	INTRODUCTION TO RESEARCH METHODS IN PSYCHOLOGY
0737	3h 0m / week Nicolaidis C Online 3.0
1194	3h 0m / week Nicolaidis C Online 3.0
PSYC 19	INTRODUCTION TO STATISTICS FOR THE SOCIAL SCIENCES
0373	4h 0m / week Nicolaidis C Online 4.0
PSYC 25	LIFESPAN DEVELOPMENT
0140	3h 0m / week Nicolaidis C Online 3.0
0714	3h 0m / week Szechter L Online 3.0
0744	3h 0m / week Nicolaidis C Online 3.0
0869	6h 20m / week Whitworth R Online 3.0 (08/13-10/08)
0870	3h 0m / week Nicolaidis C Online 3.0
1218	6h 20m / week Whitworth R Online 3.0 (10/11-12/03)
PSYC 35	INTRODUCTION TO ABNORMAL PSYCHOLOGY
1076	3h 0m / week Whitworth R Online 3.0
1167	T 6:30pm-9:20pm Triplett R SS102 3.0
PSYC 38	BIOLOGICAL PSYCHOLOGY
0174	3h 0m / week Kotecki A Online 3.0
0231	3h 0m / week Kotecki A Online 3.0
0729	3h 0m / week Kotecki A Online 3.0
PSYC 40	HUMAN SEXUALITY
0873	3h 0m / week Luke J Online 3.0

Real Estate

REAL 50	PRINCIPLES OF REAL ESTATE
1591	MW 6:00pm-9:10pm Jones Becky Online 3.0 (08/16-10/08)
REAL 51	REAL ESTATE PRACTICE
0244	MW 6:00pm-9:10pm Jones Becky Online 3.0 (10/11-12/01)
REAL 54	REAL ESTATE ECONOMICS
0359	Th 6:00pm-9:20pm Staff Online 3.0 & 2h 40m / week Staff Online (08/16-10/08)
REAL 57A	REAL ESTATE APPRAISAL I
1186	TTh 6:00pm-9:20pm Migdale G Online 3.0 (10/12-12/02)

Sociology

SOCI 1	INTRODUCTION TO SOCIOLOGY
0086	3h 0m / week White M Online 3.0
0882	3h 0m / week Chap M Online 3.0
0883	TTh 2:00pm-3:15pm Villarreal A SS102 3.0
1075	3h 0m / week Cortes A Online 3.0

Sections below offered at the MPC Education Center in Marina:
1172 MW 9:30am-10:45am Villarreal A MA501 3.0

SECTION	DAYS	TIME	INSTRUCTOR	ROOM	UNITS	SECTION	DAYS	TIME	INSTRUCTOR	ROOM	UNITS	SECTION	DAYS	TIME	INSTRUCTOR	ROOM	UNITS			
SOCI 2		CONTEMPORARY SOCIAL PROBLEMS				SOCI 40		SOCIOLOGY OF MARRIAGES AND FAMILIES				SPAN 2		ELEMENTARY SPANISH II						
<i>Sections below offered at the MPC Education Center in Marina:</i>						0885	W	9:30am-10:45am	Zaleha B	Online	3.0	1054	M	11:00am-1:15pm	Torres Burgo	HU106	5.0			
0884	MW	11:00am-12:15pm	Villarreal A	MA501	3.0	&		1h 25m / week	Zaleha B	Online		& W	11:00am-12:30pm	Torres Burgo	Online					
SOCI 3		INTRODUCTION TO SOCIAL PSYCHOLOGY				Spanish						&	0h 35m / week	Torres Burgo	Online					
0145	3h 0m / week	Whitworth R	Online	3.0	SPAN 1		ELEMENTARY SPANISH I					1177	TTh	11:00am-12:30pm	Lizano S	Online	5.0			
1173	3h 0m / week	Whitworth R	Online	3.0	0889	MW	11:00am-12:30pm	Lizano S	Online	5.0	&	1h 20m / week	Lizano S	Online						
1421	TTh	12:30pm-1:45pm	Austin T	SS205	3.0	&	0h 35m / week	Sanchez Sulc	HU106	5.0	&	1h 20m / week	Lizano S	Online						
SOCI 11		MASS MEDIA AND POPULAR CULTURE				0891	T	11:00am-1:15pm	Sanchez Sulc	HU106	5.0	SPAN 2S		ELEMENTARY SPANISH FOR SPANISH SPEAKERS II						
0553	TTh	9:30am-10:45am	Villarreal A	SS101	3.0	&	0h 35m / week	Sanchez Sulc	Online	&	0260	MW	11:00am-12:30pm	Borja F	Online	5.0				
SOCI 12		INTRODUCTION TO GENDER AND SEXUALITY				0892	MW	9:00am-10:30am	Lizano S	Online	5.0	&	1h 20m / week	Borja F	Online					
0376	TTh	2:00pm-3:15pm	Staff	Online	3.0	&	1h 20m / week	Lizano S	Online		0763	5h 0m / week	Cisneros S	Online	5.0					
SOCI 13		INTRODUCTION TO RACE AND ETHNICITY				1175	TTh	6:00pm-7:30pm	Del Pozo J	Online	5.0	SPAN 3		INTERMEDIATE SPANISH I						
0316	TTh	11:00am-12:15pm	Villarreal A	SS102	3.0	&	1h 20m / week	Del Pozo J	Online		<i>Sections below offered at the MPC Education Center in Marina:</i>									
SOCI 19		INTRODUCTION TO STATISTICS FOR THE SOCIAL SCIENCES				SPAN 1S		ELEMENTARY SPANISH FOR SPANISH SPEAKERS I				SPAN 3S		INTERMEDIATE SPANISH FOR SPANISH SPEAKERS I						
0375	4h 0m / week	Nicolaides C	Online	4.0	0259	5h 0m / week	Kamimura H	Online	5.0	0527	5h 0m / week	Cisneros S	Online	5.0	SPAN 10		SPANISH FOR THE PROFESSIONS			
SOCI 22		ASIAN AMERICANS AND PACIFIC ISLANDERS IN AMERICAN SOCIETY				0283	TTh	6:00pm-7:30pm	Borja F	Online	5.0	&	1h 20m / week	Borja F	Online	5.0	0280	8h 25m / week	Oliva P	Online
0696	6h 20m / week	Cabrera V	Online	3.0	0351	TTh	11:00am-12:30pm	Borja F	Online	5.0	&	1h 20m / week	Borja F	Online						
(10/11-12/03)					0491	M	6:00pm-8:15pm	Pico Renteri	HU106	5.0	SPAN 31		INTRO TO TRANSLATION AND INTERPRETING: SPANISH/ENGLISH							
					&	3h 40m / week	Pico Renteri	Online		0270	MW	2:00pm-3:30pm	Oliva P	Online	4.0	&	4h 45m / week	Oliva P	Online	
					(09/07-12/10)					(10/11-12/03)										

LEARN SPANISH

There are 47% Spanish-speaking households in Monterey County. (Monterey County Health Department), and Spanish is the fastest-growing language in California. Would you like to join 400 million people who speak the language? Enroll in Spanish 1A or Spanish 1SA (if you are a heritage speaker). These courses introduce you to an ability to listen, speak, read, and write in Spanish, and it starts you on a path to a Certificate of Achievement or Associate degree. Enroll today!

Contact Francisco De Borja
fdorsch@mpc.edu

MPC ESPAÑOL

Certificates of Achievement

MEJORAR TU ESPAÑOL

Hay un 47% de hogares de habla hispana en el condado de Monterey, según el Departamento de Salud del Condado de Monterey. El español es el idioma de más rápido crecimiento en California. ¿Le gustaría unirse a 400 millones de personas que hablan el idioma? Inscríbase en Español 1A o Español 1SA (si es un hablante de herencia). Estos cursos le presentan la posibilidad de escuchar, hablar, leer y escribir en español correctamente y es el comienzo para conseguir un Certificado de Logro o un título de Asociado. ¡Inscríbase hoy!

SECTION	DAYS	TIME	INSTRUCTOR	ROOM	UNITS	SECTION	DAYS	TIME	INSTRUCTOR	ROOM	UNITS	SECTION	DAYS	TIME	INSTRUCTOR	ROOM	UNITS
Speech Communication						Theatre Arts						THEA 58D THEATRE FOR YOUNG AUDIENCES - ORIGINAL/EXPERIMENTAL					
SPCH 1 PUBLIC SPEAKING						THEA 1 INTRODUCTION TO THEATRE						0190 M-Su 6:00pm-8:35pm Staff TH208 3.0 (10/11-12/05)					
0233		3h 0m / week	Osburg	Online	3.0	1072		3h 0m / week	Eck T	Online	3.0	THEA 59A REPERTORY THEATRE - MUSICAL					
0297	MW	1:00pm-2:15pm	May M	HU205	3.0	THEA 4 INTERCULTURAL DRAMA						0403 21h 45m / week Burns S PRT 3.0 (08/30-10/17)					
0436		3h 0m / week	Genauer R	Online	3.0	1073 M 11:00am-11:50am Staff Online 3.0 & 2h 0m / week Staff Online						THEA 59C REPERTORY THEATRE - ORIGINAL/EXPERIMENTAL					
0790	MW	9:30am-10:45am	Baumback J	HU205	3.0	THEA 5 FILM APPRECIATION						0492 11h 40m / week Burns S PRT 3.0 (07/01-09/26)					
0897		3h 0m / week	Cardinale M	Online	3.0	1185 T 6:30pm-9:20pm Shapiro G Online 3.0											
0898		6h 20m / week (10/11-12/03)	Cardinale M	Online	3.0	THEA 8A BEGINNING SCREENWRITING											
0899	TTh	12:30pm-1:45pm	Baumback J	HU205	3.0	1188 3h 0m / week Eck T Online 3.0											
0901		3h 0m / week	Staff	Online	3.0	THEA 8B INTERMEDIATE SCREENWRITING											
1060		6h 20m / week (08/16-10/08)	Cardinale M	Online	3.0	1190 3h 0m / week Eck T Online 3.0											
1303	TTh	9:30am-10:45am	May M	HU205	3.0	THEA 9 HISTORY OF FILM: 1880S THROUGH 1950S											
SPCH 2 SMALL GROUP COMMUNICATION						0378 3h 0m / week Albert M Online 3.0											
0511		3h 0m / week	Sturt	Online	3.0	THEA 15A ACTING I											
0904		3h 0m / week	Sturt	Online	3.0	0186 2h 0m / week Eck T Online 3.0 & TTh 10:00am-11:15am Eck T TH201											
0905		3h 0m / week	Staff	Online	3.0	THEA 20 INTRODUCTION TO THEATRE DESIGN											
0906	TTh	11:00am-12:15pm	Staff	Online	3.0	0188 MW 1:00pm-2:15pm Eck T Online 3.0 & 4h 0m / week Eck T Online											
SPCH 3 INTERPERSONAL COMMUNICATION						THEA 40C MAIN STAGE PRODUCTION - CLASSICAL											
0793		3h 0m / week	Baumback J	Online	3.0	0189 M-Su 6:00pm-8:25pm Eck T TH208 3.0 (09/03-10/31)											
1183	W	6:30pm-9:20pm	Triplett R	HU107	3.0												
1205		3h 0m / week	Genauer R	Online	3.0												
SPCH 4 INTERCULTURAL COMMUNICATION																	
0050		3h 0m / week	Sturt	Online	3.0												
SPCH 5 ORAL INTERPRETATION OF LITERATURE																	
0303	TTh	2:00pm-3:15pm	Staff	HU205	3.0												

World Civilization

See GENTRAIN

World Languages

The following languages are offered this term. For class information, please find them by alphabetical order throughout this Schedule of Classes.

AMERICAN SIGN LANGUAGE

FRENCH

JAPANESE

SPANISH



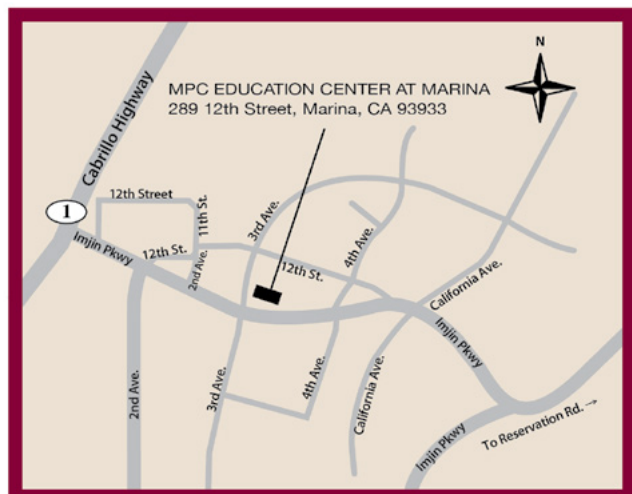
MPC | EDUCATION CENTER AT MARINA

MONTEREY PENINSULA COLLEGE



Conveniently located for residents of Northwestern Monterey County, MPC's Education Center at Marina offers a variety of courses for transfer, career technical education, and personal enrichment. The Marina Education Center offers a variety of support resources and services to support your academic success.

Go to mpc.edu/marina to learn more!



Please visit www.mpc.edu/schedule for the most up-to-date list of classes

MARINA / SEASIDE CAMPUS LOCATIONS	MA MPC Education Center at Marina 289 12th Street, Marina	SPS MPC Public Safety Training Center 2642 Colonel Durham Street, Seaside
OFF – CAMPUS LOCATIONS		
AP Ariel Theatrical 320 Main Street, Salinas	HOPE Hope Building 1663 Catalina St., Sand City	NBI North Bay Industries 1 University Circle, Monterey
BHB Bayonet and Black Horse Golf Course 1 McClure Way, Seaside	HVMS Hidden Valley Music Seminars 88 West Carmel Valley Road, Carmel Valley	OC Oldemeyer Center 986 Hilby Ave., Seaside
BPH Bay Park Hotel 1425 Munras Ave., Monterey	MCFB Mid Coast Fire Brigade 38841 Palo Colorado Rd., Carmel	PGHS Pacific Grove High School 615 Sunset Dr., Pacific Grove
BSFB Big Sur Volunteer Fire Brigade Pfeiffer Ridge Rd., Big Sur	MCRFPD Monterey County Regional Fire Protection District 19900 Portola Dr., Salinas	PRT Pacific Repertory Theater Monte Verde & 8th, Carmel
CCLK Central Coast Lighthouse Keepers Pt. Sur State Park, Big Sur	MFD Monterey Fire Department Pacific & Madison, Monterey	SALLYG Sally Griffin Active Living Center 700 Jewell Ave., Pacific Grove
CFPD Cachagua Fire Protection District 37200 Nason Rd., Carmel Valley	MHS Monterey High School 101 Herrmann Dr., Monterey	SFD Seaside Fire Department 1635 Broadway Ave., Seaside
CHS Carmel High School 3600 Ocean Ave., Carmel	MRNHS Marina High School 2995 Rendova Rd., Marina	SHS Seaside High School 2200 Noche Buena, Seaside
CLINIC Health Facility Clinic See Program Coordinator	MTC Mott Training Center 837 Asilomar Blvd, Pacific Grove	SNJOSE South Bay Regional Public Safety Training Consortium 3095 Yerba Buena Rd., San Jose
HFD Hanford Fire Department 350 West Grangeville Blvd., Hanford	MTCA Mott Training Center Annex 2211 Garden Rd., Shop C, Monterey	

Directory of Student Services

Academic Council Petitions
(831) 645-1377

Access Resource Center
(831) 646-4070

Admissions & Records
(831) 646-4002 / admissions@mpc.edu

Articulation
(831) 646-3013

Assessment Office
(831) 646-4027 / assessment@mpc.edu

Associated Students of MPC Office
(831) 646-4013

Bookstore
(831) 657-4680

CARE / CalWorks
(831) 646-4248

Career / Transfer Resource Center
(831) 645-1336

Certificate Requirements
(831) 646-4020

Clubs, Student
(831) 646-4192

Counseling Office
(831) 646-4020

Dean, Student Services
(831) 645-1377

Dean, Student Services
(831) 646-4155

Dean, Student Services
(831) 646-4220

Dual Enrollment
(831) 646-4282 / dualenrollment@mpc.edu

Early Childhood Education Lab School
(831) 646-4066

Education Center at Marina
(831) 646-4850 / marinaedcenter@mpc.edu

EOPS Office
(831) 646-4247

Financial Aid (Student Financial Services)
(831) 646-4030

Graduation Requirements
(831) 646-4020

Health Services
(831) 646-4017

Sandy Nee
Student Services Building

Jacque Evans
Student Services Building

Student Services Building

He Seon Ihn
Student Services Building

Student Services Building

Julie Osborne
Student Center

Bookstore Manager
Student Center

Kacey Giammanco
Student Services Building

Sudeshna Nand
General Classrooms

Counselors
Student Services Building

Julie Osborne
Student Center

Alethea De Soto
Student Services Building

LaKisha Bradley
Student Services Building

Eric Ogata
Student Services Building

Wendy Bates
Athletics / Kinesiology

Jeff Procvie
Early Childhood Education Lab School

Eric Ogata
Student Services Building

Student Services Building
Counselors
Student Services Building

Leann Contapay
Student Services Building

Housing Information
(831) 646-4192

International Students
(831) 645-1380

Math / Science Upward Bound
(831) 645-1306

Parking Permits Purchase
(831) 646-4002

Policies and Regulations, Student
(831) 646-4155

Probation and Disqualification
(831) 645-1377

Registration
(831) 646-4002 / admissions@mpc.edu

Residency
(831) 646-4002 / admissions@mpc.edu

Scholarships
(831) 646-4030

Security
(831) 646-4099 / (831) 646-4292

Sexual Harrassment / Sexual Misconduct
(831) 646-4850 / titleIX@mpc.edu

Student Accounts
(831) 646-4046

Student Activities
(831) 646-4192

Student Center
(831) 646-4192

Student Conduct
(831) 646-4155

Student Employment
(831) 646-4195

Student Equity & Achievements
(831) 646-4261 / seaprogram@mpc.edu

Title IX
(831) 646-4850 / titleIX@mpc.edu

TRIO Student Support Services (SSS)
(831) 646-4246

Transcripts
(831) 646-4002 / admissions@mpc.edu

Upward Bound
(831) 646-4089

Veterans Assistance Office
(831) 646-4025 / (831) 646-4020

Julie Osborne
Student Center

Alethea DeSoto
Student Services Center

Jasmine Do
Student Services Building

Online via WebReg

VP of Student Services
Administration Building

Sandy Nee
Student Services Building

Admissions & Records
Student Services Building

Admissions & Records
Student Services Building

Student Financial Services
Student Services Building

Student Center

Kayla Valentine
Human Resources

Fiscal Services
Administration Building

Julie Osborne
Student Center

Julie Osborne
Student Center

VP of Student Services
Administration Building

Lien Nguyen
General Classrooms

LaKisha Bradley
Student Services Building

Kayla Valentine
Human Resources

Grace Anongchanya
Student Services Building

Admissions & Records
Student Services Building

Sandra Washington
Student Services Building

Eileen Crutchfield
Student Center

MPC FOUNDATION MONTEREY PENINSULA COLLEGE

Thank you Business Partners for supporting MPC students!



1st Capital Bank

Hayashi Wayland

Vanderbilt CPAs PC

Cardinale Moving & Storage
Lozano Smith, LLP

Dole Fresh Vegetables
Mahoney & Associates
Monterey Plaza Hotel

Kennedy, Archer & Giffen
McGilloway, Ray, Brown & Kaufman



Residential Customer

ECRWSS

ADM ADMINISTRATION

- Fiscal Services
- Human Resources
- Information Center
- Information Technology
- Marketing & Communications
- Mail Room
- MPC Foundation
- President's Office
- V.P., Academic Affairs
- V.P., Administrative Services
- V.P., Student Services

AC ART CERAMICS

AD ART DIMENSIONAL

- Jewelry & Metal Arts
- Sculpture

AG ART GALLERY

AMP AMPHITHEATER

AS ART STUDIO

- Creative Arts Division Office
- Student Art Center

AT AUTOMOTIVE TECHNOLOGY

BMC BUSINESS MATH & COMPUTING

- Business & Computer Science Division Office
- Business Skills Center
- Cooperative Work Experience Office
- Internship Program Office
- Math Learning Ctr.

DA DANCE & ADAPTIVE PE

- Adaptive Physical Education

ECE EARLY CHILDHOOD EDUCATION

- Early Childhood Laboratory School

FA FACILITIES

- Custodial Services
- Grounds
- Maintenance
- Shipping / Receiving

FC FAMILY & CONSUMER SCIENCE

- FC Kitchen

FTC FITNESS / TRAINING CENTER

GA GRAPHIC ARTS

GC GENERAL CLASSROOMS

- Career Transfer Resource Center
- El Centro
- Job Center

GYM GYMNASIUM / KINESIOLOGY

- Athletic Training
- Equipment Room
- Gymnasium
- Locker Rooms
- Kinesiology Division Office

HU HUMANITIES

HSS HUMANITIES / SUPPORT SERVICES

- Access Resource Center (ARC)
- High Tech Center
- Humanities Division Office

IC INTERNATIONAL CENTER

LF LECTURE FORUM

- Marine Advanced Technology Education (MATE) Center
- Print Shop

LTC LIBRARY & TECHNOLOGY CENTER

- English & Study Skills Center
- English as a Second Language (ESL) Lab
- Instructional Technology Dept.
- Leon Stutzman Room
- Online Education
- Reading Center
- Sam Karas Room
- STEM CEL Tutoring



P Public Parking	All vehicles must have a parking pass. Buy one at Fiscal Services in: ADM	I Information	S Security Office 646-4099	R Restrooms	L Lactation Room	B MST Bus Stop
P Staff Parking		+ First Aid / Nurse	AED Automated External Defibrillator (AED)	R Gender-Inclusive Restroom	♿ Accessibility / Elevator	WiFi Campus has Free Wi-Fi

LS LIFE SCIENCES

- Life Science Division Office

MU MUSIC

- Listening Center
- Music Hall

MV MODULAR VILLAGE

- T300
- T500
- T600

NU NURSING

- Nursing Division Office

PS PHYSICAL SCIENCE

- Physical Science Division Office

SS SOCIAL SCIENCE

- Social Science Division Office
- Snark Shark

SC STUDENT CENTER

- Almaden Room
- Associated Students of MPC (ASMPC)
- Bookstore
- Cafeteria
- Costanoan Room
- Housing Information Center
- Student Activities Office
- Student Security: 646-4099
- TRIO Learning Center
- Veteran's Resource Center

STS STUDENT SERVICES

- Access Resource Center
- Admissions & Records
- Assessment Center
- CalWorks
- Cooperative Agencies Resources for Education (CARE)
- Counseling
- Dean of Student Services

STS STUDENT SERVICES CONTINUED

- Extended Opportunity Programs & Services (EOPS)
- First Aid & Emergency Care
- International Student Programs
- Residency Info
- Student Financial Services
- Student Health & Psychological Services
- Testing Center (ARC)
- TRIO Offices
- Student Equity & Achievement

T100 TEMPORARY BUILDING

- Planning, Research & Institutional Effectiveness (PRIE)

TH THEATER