



MONTEREY PENINSULA  
COLLEGE

# SPRING 2021 CLASS SCHEDULE

[www.mpc.edu](http://www.mpc.edu)



expect to learn • expect to be challenged • expect the best



# MPC IS YOUR \$MART CHOICE

**Monterey Peninsula  
College Governing Board  
of Trustees:**

- Ms. Yuri Anderson, Chair - Area 2
- Dr. Loren Steck, Vice Chair - Area 5
- Ms. Rosalyn Green, Trustee - Area 1
- Ms. Marilyn Dunn Gustafson,  
Trustee - Area 4
- Mr. Rick Johnson, Trustee - Area 3
- Ms. Tenisha Hill, Student Trustee

**Monterey Peninsula College** is a community college accredited by the Western Association of Schools and Colleges. The college is open to high school graduates and all others 18 years of age or older who may profitably pursue a course of study. Students in grades 6-12 may attend with written approval from their school principal and their parent(s) prior to registering. Students in grades 6-8 need additional approval from the Dean of Student Services.

**Call Admissions & Records at (831) 646-4002 or email [admissions@mpc.edu](mailto:admissions@mpc.edu) for registration information**

All Monterey Peninsula College written publications will be made available in alternative formats (print, Braille, audiotape, or e-text). Requests for alternate media should be made to Access Resource Center at (831) 646-4070.

**MPC Smoking Policy:**  
The use of tobacco – to include smoking and/or chewing any form of tobacco – is only permitted in designated parking lots.

(MPC Board Policy #3570)

# President's Welcome

## Spring 2021 at Monterey Peninsula College

Welcome to Monterey Peninsula College (MPC), a vibrant institution of higher learning. MPC offers exceptional educational opportunities at our campus in Monterey, our Education Center at Marina, our Public Safety Training Center in Seaside, and online.

With a high-quality education, you can transform your personal and professional life. Whether your goal is to get a head start on your college education, earn a certificate or an associate degree, transfer to a four-year university, update your skills, train for a new career, or enrich your personal life, MPC can help you achieve it.

Wherever you are on your educational path, MPC will help you take the next step toward success.

**David Martin**  
Superintendent/President

## Primavera 2021 en Monterey Peninsula College

Bienvenidos al Colegio de la Península de Monterey (MPC), un colegio vibrante de educación. MPC ofrece oportunidades excepcionales de educación en nuestras localidades en Monterey, Centro Educativo de Marina, Centro de Entrenamiento de Seguridad Pública, y en línea.

Con una educación de alto nivel, tú puedes transformar tu vida personal y profesional. Si tu meta es avanzar tu educación, recibir un certificado, un diploma asociado, transferirte a una universidad, mejorar tus habilidades, recibir entrenamiento para una nueva carrera, o enriquecer tu vida personal, MPC está aquí para ayudarte a obtenerlo.

En lo que necesites, MPC te ayudará a tomar el siguiente paso a tu éxito.



# Calendar of Important Dates

## Early Spring Session 2021

January 4 to January 22, 2021

<b>November 16, 2020</b>	Priority registration begins
<b>Dec. 24, 2020 - Jan. 1, 2021</b>	Campus closed for Winter Break
<b>January 3, 2021</b>	Last day to register through WebReg without an add code
<b>January 4, 2021</b>	Early Spring classes begin
<b>TBD</b>	Drop/Add/Refund dates: please see class website
<b>January 18, 2021</b>	HOLIDAY: Dr. Martin Luther King Jr. Day
<b>January 22, 2021</b>	Early Spring classes end

## Spring Session 2021

January 25 to May 28, 2021

<b>October 20, 2020</b>	Application period begins
<b>November 16, 2020</b>	Open registration
<b>January 24, 2021</b>	Last day to register through WebReg without an add code
<b>January 25, 2021</b>	Classes begin
<b>January 25 - February 6</b>	Late registration – add codes required for registration
<b>February 6</b>	Last day to drop semester-length courses and be eligible for a refund
<b>February 6</b>	Last day to add a semester-length course with an add code
<b>February 7</b>	Last day to drop semester-length courses without a “W” grade
<b>February 8</b>	Census Day
<b>February 12</b>	HOLIDAY: Lincoln’s Day
<b>February 15</b>	HOLIDAY: Washington’s Day
<b>February 20</b>	Last day to request pass/no pass grade option for semester-length courses
<b>March 22 - 27</b>	SPRING RECESS
<b>April 15</b>	Application deadline for May graduation
<b>April 28</b>	Last date to drop semester-length courses and receive “W” grade
<b>May 24 - 28</b>	Final Examinations
<b>May 28</b>	End of semester
<b>May 29</b>	Commencement

**Information:** (831) 646-4000

**Admission & Records:**

(831) 646-4002 or  
admissions@mpc.edu

**TTY:** (831) 645-1319

**Web Registration (WebReg):**

www.mpc.edu

**Campus Security:**

(831) 646-4099

**Counseling:**

(831) 646-4020

**Assessment Center:**

(831) 646-4027

**Child Development Center:**

(831) 646-4066

**Bookstore:**

(831) 657-4680

**Library:**

(831) 646-4095

**Marina Education Center:**

(831) 646-4850

**MPC Public Safety**

**Training Center:**

(831) 646-4240

**Financial Aid:**

(831) 646-4030

### Schedule Changes

Adds and/or Drops can be made by WebReg 24 hours a day online.

If course registration is not completed before the term begins, students must attend class, request an add code from the instructor and use WebReg to register during the late registration period.

### STUDENT SERVICES:

Admissions & Records Office  
(831) 646-4002  
[www.mpc.edu/admissions](http://www.mpc.edu/admissions)

# When to Register

**Registering for MPC classes is easy!** It is recommended that you register as early as possible to get the classes that you want.

Web Registration (WebReg) at [www.mpc.edu](http://www.mpc.edu) open 24 hours per day.  
Computers and WebReg assistance available in the Student Services Building.

## Priority Registration

**CONTINUING STUDENTS** are students enrolled at MPC during Fall 2020.

**RETURNING STUDENTS** are students who enrolled at MPC previously, but not in Fall 2020.

**NEW AND NEW TRANSFER STUDENTS** are students who have never enrolled at MPC.

**DUAL ENROLLMENT STUDENTS** are students who are currently in grades 6-12.

PRIORITY	GROUP	PRIORITY DATE
Priority 1	Active Military, Veterans, Foster Youth, Homeless Youth, ARC, EOPS & CalWORKS. Students must be either continuing MPC students in good standing <sup>1</sup> (up to 99.9 units <sup>2</sup> ) or fully matriculated <sup>3</sup> if new or returning	November 16
Priority 2	Student Athletes, ASMPCC Officers and students in the following programs: First Year Experience, Teacher Pathway Program, Umoja, and TRIO. Students must be either continuing MPC students in good standing <sup>1</sup> (up to 99.9 units <sup>2</sup> ) or fully matriculated <sup>3</sup> if new or returning	November 18
Priority 3	Continuing MPC students in good standing <sup>1</sup> with 30.0-99.9 units in progress and on file	November 20
Priority 4	Continuing MPC students in good standing <sup>1</sup> with 0.0-29.5 units in progress and on file	November 23
Priority 5	New fully matriculated <sup>3</sup> students	November 25
Open Registration	Open Registration for all other New and Returning students, dual enrolled students (grades 6-12), and continuing MPC students with 99.9+ units in progress and on file	November 30

<sup>1</sup> **In good standing:** student who is NOT on academic or progress dismissal or who is not on any probation for the last two consecutive semesters (Foster Youth will not lose priority and need to be manually adjusted)

<sup>2</sup> **100 unit:** once a student reaches 100 units, he/she loses priority limit includes only degree applicable units (MPC courses numbered 1-299)

<sup>3</sup> **Fully Matriculated:** Student has completed Assessment, Orientation, and has an Education Plan on file for the term priority registration is for.

## Late Registration

January 25, 2021 - February 6, 2021

Attend the first class, request an Add Code from the instructor and register using WebReg. Need assistance?

Please visit Admissions & Records in the Student Services Building or call **(831) 646-4002**.

**Please note: There are many drawbacks to registering late. Classes would have already begun; the classes you want may already be filled; and counseling will be limited. So register early!**

# Steps for New Students

New students should complete each of the following steps in order to be cleared for registration.

## STEP 1. APPLICATION

Complete application online at [www.mpc.edu](http://www.mpc.edu)

1. Click on “Apply for Admission”
2. Follow the instructions on CCCApply to submit an application.

## STEP 2. FINANCIAL AID (OPTIONAL)

Students who need assistance paying their fees are encouraged to submit the FAFSA ([fafsa.ed.gov](http://fafsa.ed.gov)) or DREAM Act ([dream.csac.ca.gov](http://dream.csac.ca.gov)) application before they register for classes.

See page 8 for more Financial Aid information.

## STEP 3. ASSESSMENT & PLACEMENT

Assessment policies have changed in response to Assembly Bill 705. Assessment tests are not required for placement into English or Math courses; however, you will need to complete a placement test for English as a Second Language courses. Please see our website for the most current information and procedures.

See Assessment information at [www.mpc.edu/assessment](http://www.mpc.edu/assessment) or call (831) 646-4027.

## STEP 4. ORIENTATION

Choose one of the following:

- A) Register for PERS 10, **OR**
- B) Complete the orientation online or in person. Please review the following website: [www.mpc.edu/orientation](http://www.mpc.edu/orientation) or call (831) 646-4845.

## STEP 5. COUNSELING/ADVISEMENT (EDUCATION PLAN)

Choose one of the following:

- A) Complete the Education Plan online at: [www.mpc.edu/counseling](http://www.mpc.edu/counseling), **OR**
- B) Complete the Education Plan with a counselor. Call (831) 646-4020 for an appointment or make your appointment online through WebReg.

## STEP 6. REGISTRATION

Register for classes online, via WebReg at [www.mpc.edu](http://www.mpc.edu)

# Your **ONLINE** education is just a *click away!*

**MPC has something for *everyone* and online classes for *all* types of learners!**

Looking for convenience and flexibility to fit a busy schedule?  
- Learn on your own time with an asynchronous class.

Looking for more human interaction and engagement?  
- Try a synchronous class. Meet online on a specific schedule just like you do on campus!

**Launch *your* future by enrolling in one of MPC's engaging online courses today!**

[www.mpc.edu/onlinecourses](http://www.mpc.edu/onlinecourses)



# How to Register

## Who may use WebReg

**Continuing Students:** Students who enrolled at MPC for the previous term. (Students in grades 6-12 are always considered new and must always submit an Application for Admission and an approved Dual Enrollment Form.

**Returning Students:** Students who enrolled at MPC before, but not the previous term.

**New and Transfer Students:** Students who have submitted their Application for Admission. Read the information about the Step Program in this schedule or contact the Counseling Department.

## WebReg Clearance

**Students who are not paying their own fees:** Students included in this group are those using Vocational Rehabilitation (Chapter 31), VA CalVet, State Department of Rehabilitation, etc. Students are responsible for all fees unless appropriate forms are received by the Admissions & Records Office within the first two weeks of the term

**Students who have been dismissed from Monterey Peninsula College:** Students must petition for readmission through the Academic Council. Check your petition status on WebReg 48 hours after Academic Council review (2nd and 4th Tuesdays).

## Welcome to WebReg (Web Registration) [www.mpc.edu](http://www.mpc.edu)

**Registration in more than 18 units:** Students must have counselor approval if registering for more than 18 units in a semester.

**U.S. Military Tuition Assistance:** Once the approved Tuition Assistance form is submitted to the Admissions & Records Office, registration may be permitted.

**U.S. Military Dependents using nonresident free exemption:** Signatures are required on the U.S. Military Dependent Residence Statement every semester/session of enrollment. Registration fees are the responsibility of the student unless the form is submitted to the Admissions & Records Office within the first two weeks of the term.

**International Students:** All students on F-1 or M-1 visas and students not possessing permanent resident visas: Approval from International Student Program office is required.

**6th-12th Grade Students:** Students in grades 6-12 and who are at least 12 years of age must complete an Application for Admission and a Dual Enrollment Form. Registration is permitted after both forms are completed and submitted to the Admissions & Records Office. Students in grades 6-8 must have additional approval from the Dean of Student Services. Call (831) 645-1377 to schedule an appointment. No approvals will be granted after the term begins.

# Spring 2021 Cost and Payment Information

### Course Fees

Enrollment Fee	\$46 per unit
Nonresident Fee*	\$290 per unit
Instructional Material Fee	Varies

### Optional Fees

Child Development Center Donation	\$3
Daily Parking Permit	\$3
Annual Parking Permit	\$95
Semester Parking Permit	\$53

### Payment

Students may log into their WebReg portal and pay fees. Additionally, fees may be paid in person at the Fiscal Services Office located in the Administration Building.

\*Nonresident and international students are charged both enrollment and nonresident fees per unit for course registration.

In addition, international (F1 visa) students may have other fees. Please visit: [www.mpc.edu/internationalstudents](http://www.mpc.edu/internationalstudents) for more information.

### Term/Session Fees

Health Fee	\$20
Student Center Use Fee	\$10
Student Body Fee	\$5
Student Representative Fee	\$2

As per the college catalog, all fees and tuition charges are subject to change without prior notification.

For more detailed information on current fees, waivers, and refunds please visit: [www.mpc.edu/admissions/fees-payments-refunds](http://www.mpc.edu/admissions/fees-payments-refunds)

## WebReg Worksheet

To access WebReg, Monterey Peninsula College requires students to use their Student ID Number (if known), otherwise students may use their Social Security Number to access their Student Portal.

### WebReg Hours:

[www.mpc.edu](http://www.mpc.edu)

24 hours per day

### WebReg Help Line Hours:

Monday-Thursday: 9:00 am - 4:00 pm

Friday: 9:00 am - 12:00 pm

Call (831) 646-4002

**Guidelines:** Complete the worksheet on the right of this page before logging in. Have a list of alternate courses, as some of the classes may be closed.

**NOTE:** *If you were not registered at MPC in the previous term, and have not submitted an Application for Admission for the term you wish to register for, registration will be denied.*

If you have changed your mailing address, telephone number and/or email address, update the information on WebReg.

The fastest, most secure way to pay for classes is through WebReg with a VISA or MasterCard. Need an alternative? There is a drop box outside the Administration Building to drop off payments.

**Computers and WebReg assistance available at the Admissions & Records Office in the Student Services Building.**

Priority registration for Spring classes begins November 16, 2020

**WebReg Helpline**  
(831) 646-4002

## To Register by WebReg:

1. Visit MPC's web site ([www.mpc.edu](http://www.mpc.edu)).
2. Click on WebReg (at the top of the website).
3. For initial entry
  - **ID Number** (enter your SSN if you do not know your student ID number)
  - **PIN** (enter your 8-digit birth date (MMDDYYYY), no spaces)
4. Click Login.
5. If asked, update your PIN. It is your responsibility to remember the PIN you enter. From this point, you will be using this PIN when accessing your WebReg account.
6. You are now in your WebReg account. Update your information, if needed  
**PLEASE READ THE INSTRUCTIONS PRINTED ON EACH SCREEN**
7. To register, click on Add/Drop/Register.
8. Select the semester/session in which you are registering.
9. Enter the 4-digit section number of the class(es) you wish to register into the "Enter Section Number box, click the "Add to Cart" button.

4 Digit Section #	Course	Units	Day(s)	Time

If the course you entered has the option of being taken for Letter Grade or P/NP (Pass/No Pass), you must now choose the grading option for which you wish to take the course. Click the option of your choice. Consult a counselor with questions.

The information related to the section number you entered appears. If this is the correct course and you wish to add additional courses, click "More Schedule Changes." Continue this process until you have requested all your courses.

If you have chosen the wrong course, click the shopping cart under the Remove button to drop the course.

10. After you have enrolled in all your desired courses, continue your registration by clicking on "Checkout"
11. The amount of money you owe for this transaction appears. **You must choose a payment option to finalize your registration.** If you clicked on payment to be made by check or cash, please complete the WebReg Payment Slip and submit your payment to Fiscal Services located in the Administration Building.
12. **When adding or dropping courses, ALWAYS PRINT YOUR RECEIPT.** This will be your record of the courses that you have added and/or dropped.
13. **If you need to make schedule changes at a later time,** you must **FIRST** drop the courses that you no longer wish to take and then add the classes that you want to take instead.
14. If you wish to purchase a Parking Permit, click Purchase Optional Fees. Parking permits will be mailed to students. Make sure your address is current in WebReg. Parking permits will begin to be mailed a few weeks before the term begins. Payment must be received before permits can be mailed out. So order and pay early!

# Financial Aid Information

## What is Financial Aid?

Financial aid is the money you receive from federal, state and local programs to help you meet the expenses (books, enrollment fee, food, rent, and transportation) of a college education. Student Financial Services provides different types of financial aid, such as grants, scholarships, work-study, and Direct Student Loans. **THE PRIMARY RESPONSIBILITY OF PAYING COLLEGE COSTS RESTS WITH YOU AND YOUR PARENTS.**

## Who is eligible?

You do not need to be low-income to be eligible for financial aid, but you must demonstrate financial need. Your financial need is the difference between the cost of attendance and your expected family contribution. If you would like to apply for financial, APPLY NOW!

## How do I apply?

To be considered for financial aid, you will need to complete the Free Application for Federal Student Aid (FAFSA) as soon as possible at <https://fafsa.gov> or the Dream Act Application at [www.csac.ca.gov/dream\\_act.asp](http://www.csac.ca.gov/dream_act.asp) Student Financial Services will notify you of any required documents to complete your financial aid file or you can check your financial aid portal.

## What are the General Eligibility Requirements?

In order to be eligible for federal, state, and institutional financial aid programs, a student must meet the following requirements:

- Must be accepted for admission and enrolled in an eligible academic program.
- Must have a High School Diploma or the equivalent (GED), or have received the California High School Proficiency Examination (CHSPE).
- Must be making satisfactory academic progress (SAP), whether or not you received financial aid.
- Must be a U.S. Citizen or eligible non-citizen with a valid Social Security Number for Federal aid.
- Must be in compliance with Selective Service Registration requirements.
- Must have resolved any drug conviction issues.
- Must not be in default on any Federal Loan Program or in repayment of any Federal Grant Programs.
- Must demonstrate financial need.

## What is Financial Aid Satisfactory Academic Progress?

In order to show financial aid satisfactory academic progress during a given semester, you must:

- Earn cumulative grade point averages of at least 2.0 ("C" average);
- Complete 2/3 of the units you attempt cumulatively and complete your degree within the 150% maximum time frame (90 units attempted.)
- For the California College Promise Grant, maintain 2.0 GPA and complete 50% of attempted units each semester and overall.

## What are my responsibilities as a student receiving Financial Aid?

As a student receiving financial aid, you are required to:

- Sign up for an MPC email account.
- Notify Student Financial Services of any change in your name, marital status, Social Security Number or income.
- Respond immediately to all correspondence sent to you by the Student Financial Services office, the Federal or State Student Aid Programs.
- Register for your classes, and complete all requirements for financial aid.
- Maintain satisfactory academic progress.

*\*Please note that it is the student's responsibility to pay any outstanding fees to MPC.*

## What is the deadline to apply for Financial Aid?

The Free Application for Federal Student Aid (FAFSA) becomes available October 1st of every year. The application for financial aid has to be completed every year you are planning to attend school. There is a priority deadline which is March 2nd, so it is encouraged to apply early.

## How can I check on my status?

There are a few ways to check on your status, They are:

- Visiting the financial aid office in the Student Service Building.
- Sending an email from your MPC email account.
- Through WebReg Portal under My Financial Aid.

## When will I know if I am eligible for Financial Aid?

Once you have completed the financial aid application process, your eligibility for financial aid will be determined. Student Financial Services will email you a financial aid award letter. The award letter will inform you of the amount and types of financial aid you will be eligible to receive. If you are not eligible to receive financial aid, Student Financial Services will notify you by email as well.

## What about fee waivers?

- **California College Promise Grant (CCPG):** This California-funded fee waiver program assists students who are classified as California residents with the mandatory Enrollment Fee.
- **CCPG Method A:** Assists students who are receiving public assistance, or are dependents of a parent on public assistance.
- **CCPG Method B:** Assists students as determined by the California Income Standards.
- **CCPG Method C:** Assists students who have completed the FAFSA and have \$1,104 in need. This is determined by Student Financial Services.
- **MPC PROMISE SCHOLARSHIP:** First Time-Full Time Students, First and Second Year Tuition Free! See website at: [www.mpc.edu/promise](http://www.mpc.edu/promise).

## HOW DO I APPLY FOR STUDENT LOANS?

To apply for student loans, you will need to complete the steps listed at: <https://www.mpc.edu/financial-aid/applications/direct-federal-student-loan>

Student Financial Services is located in the Student Services building. Please refer to the Financial Aid website for office hours. Contact Student Financial Services for assistance at **(831) 646-4030**, send an email to [financialaid@mpc.edu](mailto:financialaid@mpc.edu), or visit our website at [www.mpc.edu/financial-aid](http://www.mpc.edu/financial-aid).



**DID YOU KNOW  
YOU CAN TAKE  
COLLEGE CLASSES  
WHILE YOU'RE IN  
HIGH SCHOOL?**



Now is a great time to earn college credit.  
Online classes make it convenient to learn on your schedule!



## Attend College Tuition Free with the MPC Promise

Monterey Peninsula College is proud to offer the MPC Promise, a free in-state tuition program that will cover all college enrollment fees, for all first-time, first-year and second-year full-time students.

To be eligible, students must:

- Complete the Free Application for Federal Student Aid (FAFSA) or California Dream Act Application
- Enroll full-time at MPC (as defined as 12 units or more for Fall 2020 and continue through Spring 2021)
- Select an educational goal to earn a certificate and/or associate degree, or to transfer to a four-year college or university
- Complete the MPC New Student Orientation and develop an Educational Plan with a counselor

Visit [www.mpc.edu/promise](http://www.mpc.edu/promise) to learn more about the MPC Promise.

## Need Cash for College?

**Over \$400,000 in Scholarship Monies Awarded Annually!**

Through the generous gifts from local community members, the MPC Foundation provides over 160 scholarships annually to MPC students and incoming high school graduates through a combination of endowed, named, and unrestricted gifts. Workshops provided in the Fall and Spring to help you complete your application. All students are welcome to apply. Visit [www.mpc.edu/scholarships](http://www.mpc.edu/scholarships) to learn more about MPC scholarships, the application process, and deadlines.



SECTION	DAYS	TIME	INSTRUCTOR	ROOM	UNITS	SECTION	DAYS	TIME	INSTRUCTOR	ROOM	UNITS	SECTION	DAYS	TIME	INSTRUCTOR	ROOM	UNITS
---------	------	------	------------	------	-------	---------	------	------	------------	------	-------	---------	------	------	------------	------	-------

# Early Spring Courses

## Athletics

### ATHL 18 FUNDAMENTALS OF FOOTBALL

1042	8h 25m / week	(01/04-01/22)	Palmer R	FFIELD	0.5
1046	8h 25m / week	(01/04-01/22)	Washington R	FFIELD	0.5

### ATHL 20.8 SKILL DEVELOPMENT FOR TENNIS

4794	8h 25m / week	(01/04-01/22)	Tran	T CTS	0.5
------	---------------	---------------	------	-------	-----

### ATHL 21 COMPETITIVE GOLF

0000	MTWThF 1:00pm-3:05pm	(01/04-01/22)	Russo J	BHB	0.5
------	----------------------	---------------	---------	-----	-----

### ATHL 29 VARSITY ATHLETIC CONDITIONING

0717	8h 25m / week	(01/04-01/22)	Carroll M	TRACK	0.5
1038	8h 25m / week	(01/04-01/22)	Carroll M	TRACK	0.5
1039	8h 25m / week	(01/04-01/22)	Rosenberger	FFIELD	0.5
1040	8h 25m / week	(01/04-01/22)	Moore K	PE201	0.5

1041	8h 25m / week	(01/04-01/22)	Moore K	TBA	0.5
4795	8h 25m / week	(01/04-01/22)	O'Hare	PE201	0.5
4796	8h 25m / week	(01/04-01/22)	Phillips D	BFIELD	0.5
4798	8h 25m / week	(01/04-01/22)	Berg W	SFIELD	0.5
4799	8h 25m / week	(01/04-01/22)	Spiering	PE201	0.5

## Automotive Technology

### AUTO 105 AUTOMOTIVE ELECTRICAL CIRCUITS

0871	6h 20m / week	(01/04-01/22)	Lawrence J	Online	2.5
& MTWThF 9:00am-12:25pm Lawrence J AT103					
0873	6h 20m / week	(01/04-01/22)	Lawrence J	Online	2.5
& MTWThF 1:00pm-4:25pm Lawrence J AT103					

## Dental Assisting

### DNTL 107 CORONAL POLISH

0899	MTWThF 12:30pm-4:50pm	(01/04-01/11)	Hopkins Carp	LS202	0.5
& MTWThF 12:30pm-4:50pm Miller L LS202					
4155	MTWThF 7:45am-12:05pm	(01/04-01/11)	Hopkins Carp	LS202	0.5
& MTWThF 7:45am-12:05pm Miller L LS202					

### DNTL 108 PIT AND FISSURE SEALANTS

0907	MTWThF 12:30pm-4:50pm	(01/12-01/20)	Hopkins Carp	LS202	0.5
& MTWThF 12:30pm-4:50pm Miller L LS202					
4156	MTWThF 7:45am-12:05pm	(01/12-01/20)	Hopkins Carp	LS202	0.5
& MTWThF 7:45am-12:05pm Miller L LS202					

## Early Childhood Education

### ECED 72 ADULT SUPERVISION AND MENTORING IN EARLY CARE AND EDUCATION

0955	11h 20m / week	(01/05-01/20)	Procive	Online	2.0
------	----------------	---------------	---------	--------	-----

## English As A Second Language

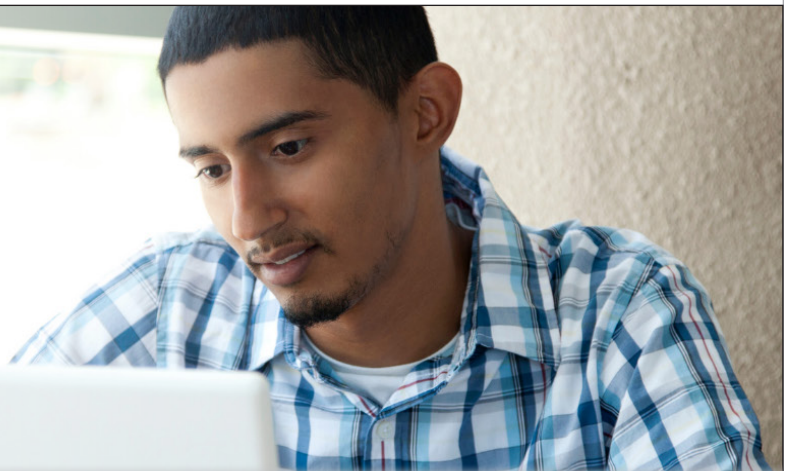
### ENSL 326 ENGLISH SKILLS FOR SUCCESS I

0277	MTWThF 9:00am-11:05am	(01/04-01/22)	Sanders C	Online	2.0
------	-----------------------	---------------	-----------	--------	-----

### ENSL 426 ENGLISH SKILLS FOR SUCCESS I

0276	MTWThF 9:00am-11:05am	(01/04-01/22)	Sanders C	Online	0.0
------	-----------------------	---------------	-----------	--------	-----

GET READY  
TO TAKE AN  
**ONLINE**  
CLASS



**Complete the online orientation course to prepare for success!**

We can assist you with the technology you need, like free WiFi and a Chromebook. Our online education support staff, librarians, math, English, and STEM tutors are available to help you with your classes, too!

**To learn more, visit [www.mpc.edu/online](http://www.mpc.edu/online)**

SECTION	DAYS	TIME	INSTRUCTOR	ROOM	UNITS	SECTION	DAYS	TIME	INSTRUCTOR	ROOM	UNITS	SECTION	DAYS	TIME	INSTRUCTOR	ROOM	UNITS
---------	------	------	------------	------	-------	---------	------	------	------------	------	-------	---------	------	------	------------	------	-------

### Fire Protection Technology

<b>FPTC 100</b>	<b>RESCUE SYSTEMS 1: BASIC RESCUE SKILLS</b>																
1089	42h 25m / week (01/04-01/08)	Staff	SPS119	1.0													
<b>FPTC 104A</b>	<b>FIRE APPARATUS DRIVER/ OPERATOR 1A: EMERGENCY VEHICLE OPS</b>																
1090	40h 40m / week (01/04-01/08)	Staff	SPS119	1.0													
<b>FPTC 104B</b>	<b>FIRE APPARATUS DRIVER/ OPERATOR 1B: PUMP OPERATIONS</b>																
1091	40h 15m / week (01/04-01/08)	Staff	SPS119	1.0													
<b>FPTC 112D</b>	<b>INSTRUCTOR I - INSTRUCTIONAL METHODOLOGY</b>																
1093	40h 40m / week (01/18-01/22)	Smith C	CDFGR	1.0													
<b>FPTC 135</b>	<b>ETHICAL LEADERSHIP</b>																
1085	8h 25m / week (01/15-01/15)	Staff	SPS119	0.5													
<b>FPTC 401</b>	<b>COMMUNITY EMERGENCY RESPONSE TRAINING</b>																
1094	24h 25m / week (01/11-01/15)	Staff	SPS119	0.0													

### Personal Development

<b>PERS 10</b>	<b>INTRODUCTION TO COLLEGE SUCCESS</b>																
0992	MTWThF 9:00am-10:25am (01/04-01/15)	Fasheh J	Online	1.0													

### Philosophy

<b>PHIL 2</b>	<b>INTRODUCTION TO PHILOSOPHY</b>																
0447	12h 40m / week (01/04-01/22)	Provost	Online	3.0													
<b>PHIL 8</b>	<b>INTRODUCTION TO WORLD RELIGIONS</b>																
0490	12h 40m / week (01/04-01/22)	Provost	Online	3.0													
<b>PHIL 10</b>	<b>INTRODUCTION TO CRITICAL THINKING</b>																
0478	12h 40m / week (01/04-01/22)	Provost	Online	3.0													

### Physical Fitness

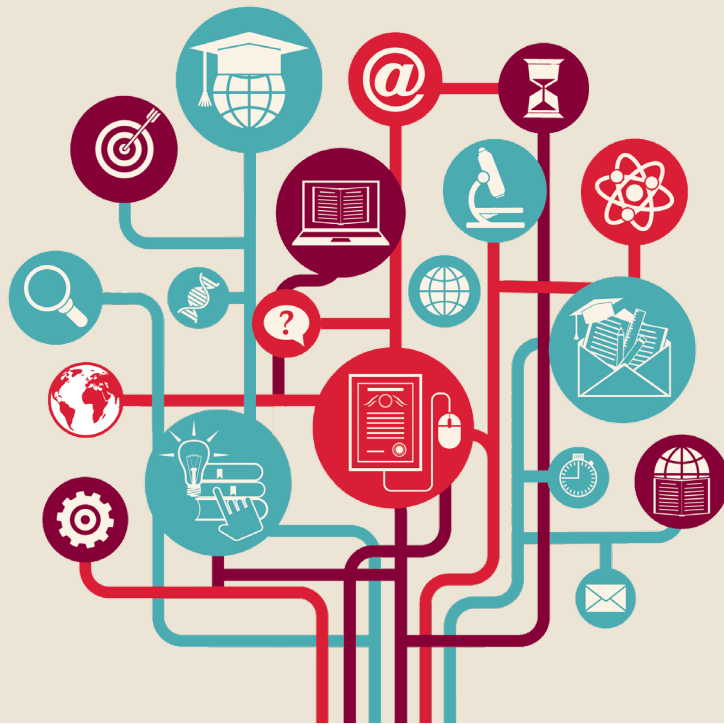
<b>PFIT 10A</b>	<b>BEGINNING WEIGHT TRAINING</b>																
0083	6h 20m / week (01/04-01/22)	Staff	Online	0.5													
<b>PFIT 10B</b>	<b>INTERMEDIATE WEIGHT TRAINING</b>																
0754	6h 20m / week (01/04-01/22)	Staff	Online	0.5													
<b>PFIT 14</b>	<b>EXERCISE FOR HEALTH AND FITNESS</b>																
4817	6h 20m / week (01/04-01/22)	Staff	Online	0.5													

### Speech Communication

<b>SPCH 1</b>	<b>PUBLIC SPEAKING</b>																
0439	12h 40m / week (01/04-01/22)	Sturt	Online	3.0													
0822	MTWThF 9:00am-12:10pm (01/04-01/22)	May M	Online	3.0													
1011	MTWThF 4:00pm-7:10pm (01/04-01/22)	Staff	Online	3.0													
1012	12h 40m / week (01/04-01/22)	Sturt	Online	3.0													

Get the support you need at MPC's Learning Centers

\* Visit the Student Services Hub in Canvas for more information.



The Reading and Writing Center, Math Learning Center, and STEM CEL are ready to provide you the academic support you need to successfully navigate your liberal arts, math, and science courses.



# Ready, Set, Transfer!

## Discover MPC's First Year Experience

Visit "EL CENTRO" online to discover new resources and services designed to increase opportunities and improve the educational achievements of Hispanic students and underrepresented students.

The resources and services provided by "EL CENTRO" are designed to help students excel academically and provide them with a continuum of support pre and post-transfer to improve student success and degree completion.

Visit "EL CENTRO" online to find out how you can get involved in transfer-oriented activities, special integrated pathways to CSUMB like the new Teacher Pathway Program (TPP), and MPC's Jump Start Summer Program!!

First Year Students, visit [www.mpc.edu/firstyear](http://www.mpc.edu/firstyear) to get connected with program designed to help you start out right, and get on the path to complete your degree and transfer!



EARNING DEGREES  
TRANSFER READINESS  
CAREER PREPARATION

**TRANSFORMING, ENRICHING,  
AND ADVANCING LIVES OF STUDENTS**

UMOJA (A Kiswahili word meaning unity) is a learning community and a critical resource dedicated to enhancing the cultural and educational experiences of African American and other students.

MPC's Umoja community is dedicated to the academic success, personal growth, career development, and self-actualization of MPC students through the integration of academics, student support services,

SECTION	DAYS	TIME	INSTRUCTOR	ROOM	UNITS	SECTION	DAYS	TIME	INSTRUCTOR	ROOM	UNITS	SECTION	DAYS	TIME	INSTRUCTOR	ROOM	UNITS
---------	------	------	------------	------	-------	---------	------	------	------------	------	-------	---------	------	------	------------	------	-------

# Spring Courses

## Administration Of Justice

### ADMJ 2 INTRODUCTION TO ADMINISTRATION OF JUSTICE

0150	M	11:00am-12:15pm	Turner J.	Online	3.0
	&	1h 25m / week	Turner J.	Online	
0337	6h	20m / week	Turner J.	Online	3.0
		(01/25-03/19)			

4966	T	9:30am-10:45am	Turner J.	Online	3.0
	&	1h 25m / week	Turner J.	Online	

### ADMJ 4 CONCEPTS OF CRIMINAL LAW

0391	MW	9:30am-10:45am	Hornik T	Online	3.0
4967	6h	20m / week	Turner J.	Online	3.0
		(03/29-05/21)			

### ADMJ 6 LEGAL ASPECTS OF EVIDENCE

0475	Th	6:30pm-9:20pm	Puck C	Online	3.0
------	----	---------------	--------	--------	-----

### ADMJ 51 CRIMINAL COURT PROCESS

0151	Th	9:30am-10:45am	Turner J.	Online	3.0
	&	1h 25m / week	Turner J.	Online	

### ADMJ 53 POLICE FIELD OPERATIONS

0191	T	6:30pm-9:20pm	McGuirk R	Online	3.0
------	---	---------------	-----------	--------	-----

### ADMJ 70 JUVENILE PROCEDURES

0152	W	11:00am-12:15pm	Turner J.	Online	3.0
	&	1h 25m / week	Turner J.	Online	

## American Sign Language

### SIGN 1A ELEMENTARY AMERICAN SIGN LANGUAGE I

4889	M	11:00am-1:15pm	Stack K	Online	5.0
	&	2h 25m / week	Stack K	Online	
5169	T	1:30pm-3:45pm	Stack K	Online	5.0
	&	2h 25m / week	Stack K	Online	

### SIGN 1AL ELEMENTARY AMERICAN SIGN LANGUAGE I LAB

0297	TTh	4:00pm-5:30pm	A Galaviz	Online	1.0
		(02/09-05/20)			

### SIGN 1B ELEMENTARY AMERICAN SIGN LANGUAGE II

0298	T	5:30pm-7:45pm	Stack K	Online	5.0
	&	2h 25m / week	Stack K	Online	

### SIGN 1BL ELEMENTARY AMERICAN SIGN LANGUAGE II LAB

0915	TTh	4:00pm-5:30pm	A Galaviz	Online	1.0
		(02/09-05/20)			

### SIGN 20 INTRODUCTION TO DEAF CULTURE

0243	3h	0m / week	Stack K	Online	3.0
------	----	-----------	---------	--------	-----



## Anatomy

### ANAT 1 HUMAN ANATOMY

0495	TTh	1:00pm-1:50pm	Ambaw A	Online	2.0
0815	2h	0m / week	Faust H	Online	2.0
0816	MW	11:00am-11:50am	Faust H	Online	2.0
0819	2h	0m / week	Ambaw A	Online	2.0
0825	2h	0m / week	Ambaw A	Online	2.0
4001	MW	11:00am-11:50am	Faust H	Online	2.0
4969	TTh	6:00pm-6:50pm	Faust H	Online	2.0

### ANAT 2 HUMAN ANATOMY LAB

0002	W	2:00pm-4:50pm	Faust H	Online	2.0
	&	3h 0m / week	Faust H	Online	
0795	T	9:30am-12:20pm	Ambaw A	Online	2.0
	&	3h 0m / week	Ambaw A	Online	
0829	M	2:00pm-4:50pm	Patel R	Online	2.0
	&	3h 0m / week	Patel R	Online	
0836	W	6:00pm-8:50pm	Ahmed O	Online	2.0
	&	3h 0m / week	Ahmed O	Online	
0842	Th	9:30am-12:20pm	Ambaw A	Online	2.0
	&	3h 0m / week	Ambaw A	Online	
0845	Th	7:00pm-9:50pm	Faust H	Online	2.0
	&	3h 0m / week	Faust H	Online	
4002	M	9:00am-10:50am	Faust H	Online	2.0
	&	3h 0m / week	Faust H	Online	
4004	T	2:00pm-4:50pm	Ambaw A	Online	2.0
	&	3h 0m / week	Ambaw A	Online	
4005	M	6:00pm-8:50pm	Ahmed O	Online	2.0
	&	3h 0m / week	Ahmed O	Online	
4971	T	7:00pm-9:50pm	Faust H	Online	2.0
	&	3h 0m / week	Faust H	Online	

### ANAT 5 HUMAN BIOLOGY

0847	6h	0m / week	Noel M	Online	4.0
0850	3h	0m / week	Noel M	Online	4.0
	&	Sat 9:00am-11:50am	Noel M	Online	
4006	6h	0m / week	Patel R	Online	4.0
4007	3h	0m / week	Bard D	Online	4.0
	&	TTh 2:00pm-3:15pm	Bard D	Online	
6502	3h	0m / week	Bard D	Online	4.0
	&	M 6:00pm-8:50pm	Bard D	Online	

## Anthropology

### ANTH 2 INTRODUCTION TO BIOLOGICAL ANTHROPOLOGY

0522	3h	0m / week	Michaels G	Online	3.0
4014	3h	0m / week	Kary E	Online	3.0
4015	3h	0m / week	Kary E	Online	3.0
4016	3h	0m / week	Kary E	Online	3.0

### ANTH 2L BIOLOGICAL ANTHROPOLOGY LABORATORY

0659	3h	0m / week	Michaels G	Online	1.0
4017	3h	0m / week	Michaels G	Online	1.0

### ANTH 4 INTRODUCTION TO CULTURAL ANTHROPOLOGY

0501	3h	0m / week	Kary E	Online	3.0
4973	3h	0m / week	Kary E	Online	3.0

### ANTH 8 PRIMATE BEHAVIORAL ECOLOGY

0237	3h	0m / week	Kary E	Online	3.0
------	----	-----------	--------	--------	-----

### ANTH 30 GENDER IN GLOBAL PERSPECTIVE

0494	3h	0m / week	Davis D	Online	3.0
------	----	-----------	---------	--------	-----

SECTION	DAYS	TIME	INSTRUCTOR	ROOM	UNITS	SECTION	DAYS	TIME	INSTRUCTOR	ROOM	UNITS	SECTION	DAYS	TIME	INSTRUCTOR	ROOM	UNITS
---------	------	------	------------	------	-------	---------	------	------	------------	------	-------	---------	------	------	------------	------	-------

# LEARN A LANGUAGE AT MPC



**AMERICAN SIGN LANGUAGE**

**FRENCH**

**JAPANESE**

**SPANISH (native and non-native speakers)**



Learning another language gives you the opportunity to **communicate** with other **communities**, make **connections** and **comparisons** with other **cultures**, and understand yourself in different worlds.

Visit [mpc.edu/languages](http://mpc.edu/languages) to learn more!



## HISPANIC SERVING INSTITUTION

**42%**

Of MPC students are Hispanic

**66%**

Of Latinx Students attend HSI's

- Improve placement and progression of underserved students
- Build a transfer culture that promotes degree completion
- Strengthen a connection between MPC and CSU Monterey Bay



follow us on Instagram  @hsi\_mpc  
#somasmpc #globos #mpchsi

SECTION	DAYS	TIME	INSTRUCTOR	ROOM	UNITS	SECTION	DAYS	TIME	INSTRUCTOR	ROOM	UNITS	SECTION	DAYS	TIME	INSTRUCTOR	ROOM	UNITS
---------	------	------	------------	------	-------	---------	------	------	------------	------	-------	---------	------	------	------------	------	-------

### Art - Basics

<b>ARTB 2</b>	<b>VISUAL FUNDAMENTALS: TWO-DIMENSIONAL DESIGN</b>
1017	TTh 9:30am-12:20pm Lara C Online 3.0
<b>ARTB 3</b>	<b>VISUAL FUNDAMENTALS: THREE-DIMENSIONAL DESIGN</b>
1034	6h 0m / week Quinonez Online 3.0
<b>ARTB 4</b>	<b>COLOR FUNDAMENTALS</b>
1035	TTh 1:00pm-2:15pm Thorson, C Online 3.0 & 3h 0m / week Thorson, C
<b>ARTB 10</b>	<b>SURVEY OF THE ARTS</b>
0338	3h 0m / week Tanous M Online 3.0

### Art - Ceramics Technology

<b>ARCE 1</b>	<b>INTRODUCTION TO CERAMICS</b>
0084	6h 0m / week Eisenbach D Online 3.0
<b>ARCE 1A</b>	<b>CERAMIC HANDBUILDING I</b>
0085	6h 0m / week Eisenbach D Online 3.0
<b>ARCE 1B</b>	<b>CERAMIC HANDBUILDING II</b>
0089	6h 0m / week Eisenbach D Online 3.0
<b>ARCE 1C</b>	<b>CERAMIC HANDBUILDING III</b>
0092	6h 0m / week Eisenbach D Online 3.0

<b>ARCE 1D</b>	<b>CERAMIC HANDBUILDING IV</b>
0093	6h 0m / week Eisenbach D Online 3.0
<b>ARCE 7</b>	<b>CERAMIC SURFACE DESIGN AND TECHNIQUES</b>
1058	6h 0m / week Eisenbach D Online 3.0
<b>ARCE 9</b>	<b>ALTERNATIVE FIRING TECHNIQUES</b>
0098	6h 0m / week Eisenbach D Online 3.0

### Art - Dimensional

<b>ARTD 7A</b>	<b>3D ARTS AND TECHNOLOGY I</b>
0116	6h 0m / week Quinonez Online 3.0
<b>ARTD 7B</b>	<b>3D ARTS AND TECHNOLOGY II</b>
0117	6h 0m / week Quinonez Online 3.0
<b>ARTD 40</b>	<b>INTRODUCTION TO JEWELRY AND METALSMITHING</b>
0620	TTh 2:00pm-3:15pm Gleason A Online 3.0 & 3h 0m / week Gleason A Online
<b>ARTD 40A</b>	<b>JEWELRY AND METAL ARTS I</b>
1016	TTh 2:00pm-3:15pm Gleason A Online 3.0 & 3h 0m / week Gleason A Online
<b>ARTD 40B</b>	<b>JEWELRY AND METAL ARTS II</b>
0126	TTh 2:00pm-3:15pm Gleason A Online 3.0 & 3h 0m / week Gleason A Online

<b>ARTD 40C</b>	<b>JEWELRY AND METAL ARTS III</b>
0128	TTh 1:00pm-3:50pm Gleason A Online 3.0 & 3h 0m / week Gleason A Online
<b>ARTD 40D</b>	<b>JEWELRY AND METAL ARTS IV</b>
0407	TTh 2:00pm-3:15pm Gleason A Online 3.0 & 3h 0m / week Gleason A Online
<b>ARTD 55</b>	<b>JEWELRY: CHAIN AND RING MAKING</b>
1053	MW 6:00pm-7:15pm Gleason A Online 3.0 & 3h 0m / week Gleason A Online

### Art - Graphics

<b>ARTG 10</b>	<b>INTRODUCTION TO COMPUTERS FOR GRAPHIC ARTS</b>
4044	TTh 1:00pm-2:15pm Mann T Online 4.0 & 3h 0m / week Mann T Online
<b>ARTG 11</b>	<b>INTRODUCTION TO PHOTOSHOP</b>
4045	MW 6:00pm-7:15pm Wolf J Online 4.0 & 3h 0m / week Wolf J Online
<b>ARTG 12</b>	<b>PAGE LAYOUT AND TYPOGRAPHY</b>
5005	TTh 10:00am-11:15am Dagdigian J Online 4.0 & 3h 0m / week Dagdigian J Online






SECTION	DAYS	TIME	INSTRUCTOR	ROOM	UNITS	SECTION	DAYS	TIME	INSTRUCTOR	ROOM	UNITS	SECTION	DAYS	TIME	INSTRUCTOR	ROOM	UNITS	
<b>ARTG 15</b>	<b>GRAPHIC DESIGN: IMAGES AND TYPE</b>					<b>ARTS 11A</b>	<b>SKETCH I</b>					<b>Art - Video/Cinema</b>	<b>ARTV 1 INTRODUCTION TO FILM/VIDEO</b>					
1050	MW	9:30am-11:45am & 1h 0m / week	Dagdigan J Dagdigan J	Online	4.0	0897	T	6:00pm-8:50pm	Gomez G	Online	1.5	1005	3h 0m / week		Robbins J	Online	3.0	
<b>ARTG 17</b>	<b>GRAPHIC ARTS PORTFOLIO</b>					<b>ARTS 11B</b>	<b>SKETCH II</b>					<b>Astronomy</b>	<b>ASTR 10 INTRODUCTION TO ASTRONOMY</b>					
0201	F	10:00am-12:05pm (04/02-05/21)	Dagdigan J	Online	1.0	0898	T	6:00pm-8:50pm	Gomez G	Online	1.5	4081	3h 0m / week		Hickok E	Online	3.0	
<b>Art - History</b>																		
<b>ARTH 1</b>	<b>ART APPRECIATION</b>					<b>ARTS 12A</b>	<b>FIGURE DRAWING I</b>					<b>ASTR 10L INTRODUCTION TO ASTRONOMY LABORATORY</b>	<b>ASTR 10L INTRODUCTION TO ASTRONOMY LABORATORY</b>					
0577	3h 0m / week		Madsen	Online	3.0	4038	MW	9:00am-11:50am	Thorson C	Online	3.0	4082	3h 0m / week		Hickok E	Online	3.0	
0671	3h 0m / week		Madsen	Online	3.0	<b>ARTS 12B</b>	<b>FIGURE DRAWING II</b>					<b>ASTR 10L INTRODUCTION TO ASTRONOMY LABORATORY</b>	<b>ASTR 10L INTRODUCTION TO ASTRONOMY LABORATORY</b>					
<b>ARTH 4</b>	<b>WESTERN ART II</b>					4039	MW	9:00am-11:50am	Thorson C	Online	3.0	4087	3h 0m / week &		Hickok E Jewell L	Online	1.0	
0033	3h 0m / week		Madsen	Online	3.0	<b>ARTS 12C</b>	<b>FIGURE DRAWING III</b>					4088	3h 0m / week &		Hickok E Jewell L	Online	1.0	
<b>ARTH 14</b>	<b>RENAISSANCE ART AND ARCHITECTURE</b>					0153	MW	9:00am-11:50am	Thorson C	Online	3.0	<b>ATHL 18</b>	<b>FUNDAMENTALS OF FOOTBALL</b>					
0135	3h 0m / week		Madsen	Online	3.0	<b>ARTS 12D</b>	<b>FIGURE DRAWING IV</b>					1042	8h 25m / week (Early Spring Course - 01/04-01/22)		Palmer R	FFIELD	0.5	
<b>Art - Photographic Technology</b>																		
<b>ARPT 12A</b>	<b>DIGITAL PHOTOGRAPHY I</b>					<b>ARTS 30A</b>	<b>MIXED MEDIA I</b>					1046	8h 25m / week (Early Spring Course - 01/04-01/22)		Washington R	FFIELD	0.5	
0386	Th	1:00pm-3:50pm & 3h 0m / week	Bransfield Bransfield	Online	3.0	0154	TTh	1:00pm-3:50pm	Staff	Online	3.0	<b>ATHL 20.2</b>	<b>SKILL DEVELOPMENT FOR BASKETBALL - MEN</b>					
<b>Art - Photography</b>																		
<b>ARTP 10</b>	<b>INTRODUCTION TO PHOTOGRAPHY</b>					<b>ARTS 30B</b>	<b>MIXED MEDIA II</b>					4790	8h 25m / week (03/29-05/25)		Spiering	PE201	1.0	
0312	T	3:30pm-6:20pm	Lara C	Online	3.0	0159	TTh	1:00pm-3:50pm	Staff	Online	3.0	<b>ATHL 20.3</b>	<b>SKILL DEVELOPMENT FOR BASKETBALL - WOMEN</b>					
0509	F	1:00pm-3:50pm	Bransfield	Online	3.0	<b>ARTS 40A</b>	<b>PAINTING I</b>					4791	8h 25m / week (03/29-05/25)		O'Hare	PE201	1.0	
1066	W	4:00pm-6:50pm	Bhattacharji	Online	3.0	1030	F	9:00am-11:50am & F 12:30pm-3:20pm	Niven M Niven M	Online Online	3.0	<b>ATHL 20.4</b>	<b>SKILL DEVELOPMENT FOR FOOTBALL</b>					
<b>ARTP 11A</b>	<b>PHOTOGRAPHY I: BLACK AND WHITE</b>					<b>ARTS 40B</b>	<b>PAINTING II</b>					4792	3h 0m / week		Palmer R	FFIELD	1.0	
1021	6h 0m / week		Mettler	Online	3.0	0584	F	9:00am-11:50am & F 12:30pm-3:20pm	Niven M Niven M	Online Online	3.0	4793	3h 0m / week		Washington R	FFIELD	1.0	
1022	W	1:00pm-3:50pm & 3h 0m / week	Bransfield Bransfield	Online	3.0	<b>ARTS 40C</b>	<b>PAINTING III</b>					<b>ATHL 20.8</b>	<b>SKILL DEVELOPMENT FOR TENNIS</b>					
<b>ARTP 14</b>	<b>HISTORY OF PHOTOGRAPHY</b>					0161	F	9:00am-11:50am & F 12:30pm-3:20pm	Niven M Niven M	Online Online	3.0	4794	8h 25m / week (Early Spring Course - 01/04-01/22)		Tran	TCTS	0.5	
1065	3h 0m / week		Mettler	Online	3.0	<b>ARTS 40D</b>	<b>PAINTING IV</b>					<b>ATHL 20.11</b>	<b>SKILL DEVELOPMENT FOR SOCCER - MEN</b>					
<b>ARTP 27</b>	<b>NARRATIVE PHOTOGRAPHY</b>					0918	F	9:00am-11:50am & F 12:30pm-3:20pm	Niven M Niven M	Online Online	3.0	0331	3h 0m / week		Rosenberger	FFIELD	1.0	
1067	T	1:00pm-3:50pm & 3h 0m / week	Bransfield Bransfield	Online	3.0	<b>ARTS 60</b>	<b>INTRODUCTION TO PRINTMAKING</b>					<b>ATHL 21</b>	<b>COMPETITIVE GOLF</b>					
<b>Art - Studio</b>																		
<b>ARTS 10A</b>	<b>DRAWING AND COMPOSITION I</b>					1031	MW	12:30pm-1:45pm & 3h 0m / week	Klein E Klein E	Online Online	3.0	0000	MTWThF 1:00pm-3:05pm (Early Spring Course - 01/04-01/22)		Russo J	BHB	0.5	
1028	TTh	10:30am-11:45am & 3h 0m / week	Niven M Niven M	Online	3.0	<b>ARTS 63A</b>	<b>INTAGLIO PRINTMAKING I</b>					<b>ATHL 29</b>	<b>VARSITY ATHLETIC CONDITIONING</b>					
1029	6h 0m / week		Quinonez	Online	3.0	0257	MW	12:30pm-1:45pm & 3h 0m / week	Klein E Klein E	Online Online	3.0	0717	8h 25m / week (Early Spring Course - 01/04-01/22)		Carroll M	TRACK	0.5	
<b>ARTS 10B</b>	<b>INTERMEDIATE DRAWING</b>					<b>ARTS 63B</b>	<b>INTAGLIO PRINTMAKING II</b>					1038	8h 25m / week (Early Spring Course - 01/04-01/22)		Carroll M	TRACK	0.5	
4035	TTh	10:30am-11:45am & 3h 0m / week	Niven M Niven M	Online	3.0	0274	MW	12:30pm-1:45pm & 3h 0m / week	Klein E Klein E	Online Online	3.0	1039	8h 25m / week (Early Spring Course - 01/04-01/22)		Rosenberger	FFIELD	0.5	

SECTION	DAYS	TIME	INSTRUCTOR	ROOM	UNITS	SECTION	DAYS	TIME	INSTRUCTOR	ROOM	UNITS	SECTION	DAYS	TIME	INSTRUCTOR	ROOM	UNITS
1040		8h 25m / week (Early Spring Course - 01/04-01/22)	Moore K	PE201	0.5												
1041		8h 25m / week (Early Spring Course - 01/04-01/22)	Moore K	TBA	0.5												
4795		8h 25m / week (Early Spring Course - 01/04-01/22)	O'Hare	PE201	0.5												
4796		8h 25m / week (Early Spring Course - 01/04-01/22)	Phillips D	BFIELD	0.5												
4798		8h 25m / week (Early Spring Course - 01/04-01/22)	Berg W	SFIELD	0.5												
4799		8h 25m / week (Early Spring Course - 01/04-01/22)	Spiering	PE201	0.5												
4800		2h 0m / week	Palmer R	FFIELD	0.5												
4801		2h 0m / week	Washington R	FFIELD	0.5												
<b>ATHL 30.1 INTERCOLLEGIATE BASKETBALL: WOMEN</b>																	
4804		10h 35m / week (01/25-03/19)	O'Hare	PE201	1.5												
<b>ATHL 30.2 INTERCOLLEGIATE SOFTBALL: WOMEN</b>																	
4805		10h 0m / week	Berg W	SFIELD	3.0												
<b>ATHL 30.4 INTERCOLLEGIATE TENNIS: WOMEN</b>																	
4806		10h 0m / week	Tran	TCTS	3.0												
<b>ATHL 30.7 INTERCOLLEGIATE BEACH VOLLEYBALL: WOMEN</b>																	
0157		10h 0m / week	Moore K	TBA	3.0												
<b>ATHL 31.2 INTERCOLLEGIATE BASKETBALL: MEN</b>																	
4807		10h 35m / week (01/25-03/19)	Spiering	PE201	1.5												
<b>ATHL 31.3 INTERCOLLEGIATE BASEBALL: MEN</b>																	
4808		10h 0m / week	Phillips D	BFIELD	3.0												
<b>ATHL 31.4 INTERCOLLEGIATE GOLF: MEN</b>																	
4809		10h 0m / week	Russo J	BHB	3.0												
<b>ATHL 32.1 INTERCOLLEGIATE TRACK AND FIELD: WOMEN AND MEN</b>																	
4810		10h 0m / week	Carroll M	TRACK	3.0												
<b>ATHL 32.4 INTERCOLLEGIATE CROSS COUNTRY: WOMEN AND MEN</b>																	
1049		10h 0m / week	Carroll M	TRACK	3.0												

# LEARN BY DOING!

The MPC Automotive Technology Department is currently offering in-person labs for students.

- Prepare for a high-tech career in the automotive world.
- Learn from highly skilled and highly skilled professionals
- Earn industry certifications through our valued partnerships with Subaru & Mercedes Benz



[www.mpc.edu/auto](http://www.mpc.edu/auto)

## Automotive Technology

### AUTO 100 INTRODUCTION TO AUTOMOTIVE TECHNOLOGY

0855	3h 0m / week & MW 7:40pm-8:55pm	Evans M	Online	4.0
		Evans M	AT103	
0865	6h 20m / week & MTWTh 2:00pm-3:25pm	Lawrence J	Online	4.0
		Lawrence J	AT103	
			(01/25-03/18)	

0870	6h 20m / week & MTWTh 3:45pm-5:10pm	Lawrence J	Online	4.0
		Evans M	AT103	
			(01/25-03/18)	

5027	3h 0m / week & MW 6:00pm-7:15pm	Evans M	Online	4.0
		Evans M	AT103	

### AUTO 105 AUTOMOTIVE ELECTRICAL CIRCUITS

0871	6h 20m / week & MTWThF 9:00am-12:25pm	Lawrence J	Online	2.5
		Lawrence J	AT103	
			(Early Spring Course - 01/04-01/22)	

0873	6h 20m / week & MTWThF 1:00pm-4:25pm	Lawrence J	Online	2.5
		Lawrence J	AT103	
			(Early Spring Course - 01/04-01/22)	

### AUTO 107 AUTOMATIC TRANSMISSIONS AND TRANSAXLE

0372	6h 20m / week & MTWTh 8:00am-10:15am	Lawrence J	Online	4.0
		Lawrence J	AT103	
			(03/29-05/18)	

0874	6h 20m / week & MTWTh 11:00am-1:15pm	Lawrence J	Online	4.0
		Lawrence J	AT103	
			(03/29-05/18)	

### AUTO 108 MANUAL TRANSMISSIONS AND DRIVETRAINS

0094	6h 20m / week & MTWTh 8:00am-9:25am	Lawrence J	Online	4.0
		Lawrence J	AT103	
			(01/25-03/18)	

0875	6h 20m / week & MTWTh 9:45am-11:10am	Lawrence J	Online	4.0
		Lawrence J	AT103	
			(01/25-03/18)	

### AUTO 111 AUTOMOTIVE STEERING AND SUSPENSION

0886	6h 20m / week & MTWTh 3:45pm-5:05pm	Lawrence J	Online	4.0
		Lawrence J	AT101	
			(03/29-05/20)	

4093	6h 20m / week & MTWTh 2:00pm-3:20pm	Lawrence J	Online	4.0
		Lawrence J	AT101	
			(03/29-05/20)	

### AUTO 170 SMOG CHECK INSPECTION PROCEDURES

0890	2h 0m / week & TTh 7:10pm-8:00pm	Omstead C	Online	2.5
		Omstead C	AT103	

0989	2h 0m / week & TTh 6:00pm-6:50pm	Omstead C	Online	2.5
		Omstead C	AT103	

## Biology

### BIOL 10 PRINCIPLES OF BIOLOGY

0097	6h 0m / week	Gilbert P S	Online	4.0
4095	6h 0m / week	Gilbert P S	Online	4.0
4096	6h 0m / week	Raskoff K	Online	4.0
5029	6h 0m / week	Kochevar R	Online	4.0

### BIOL 13 MARINE BIOLOGY

0057	6h 0m / week	Raskoff K	Online	4.0
------	--------------	-----------	--------	-----

SECTION	DAYS	TIME	INSTRUCTOR	ROOM	UNITS	SECTION	DAYS	TIME	INSTRUCTOR	ROOM	UNITS	SECTION	DAYS	TIME	INSTRUCTOR	ROOM	UNITS
<b>BIOL 21</b>	<b>CONCEPTS IN BIOLOGY I: CELLS, GENETICS, AND ORGANISMS</b>											<b>BUSI 20</b>	<b>INTRODUCTION TO BUSINESS</b>				
4099	7h 0m / week		Gilbert P S	Online	5.0	0706	3h 0m / week		Gravelle K	Online	3.0	4115	3h 0m / week		Gravelle K	Online	3.0
4100	7h 0m / week		Gilbert P S	Online	5.0	0725	2h 30m / week		Feldman M	Online	3.0	<b>BUSI 36</b>	<b>INTRODUCTION TO INTERNATIONAL MARKETING</b>				
<b>BIOL 25</b>	<b>APPLIED MICROBIOLOGY LECTURE</b>											4116	3h 0m / week		Kimm M	Online	3.0
0893	3h 0m / week		Craig H	Online	3.0	0740	2h 30m / week		Feldman M	Online	3.0	<b>BUSI 38</b>	<b>MANAGING DIVERSITY AND INCLUSION</b>				
0894	3h 0m / week		Craig H	Online	3.0	0743	2h 30m / week		Feldman M	Online	3.0	4117	TTh 9:30am-10:45am		Castillo L	Online	3.0
4101	3h 0m / week		Craig H	Online	3.0	0744	2h 30m / week		Feldman M	Online	3.0	<b>BUSI 40</b>	<b>PRINCIPLES OF MANAGEMENT</b>				
<b>BIOL 26</b>	<b>APPLIED MICROBIOLOGY LABORATORY</b>											4118	6h 20m / week		Barrie B	Online	3.0
0010	6h 20m / week		Craig H	Online	1.0	0892	6h 20m / week		Gravelle K	Online	3.0		(01/25-03/19)				
0896	6h 20m / week		Craig H	Online	1.0	0982	2h 30m / week		Feldman M	Online	3.0	<b>BUSI 42</b>	<b>HUMAN RESOURCES MANAGEMENT</b>				
4102	6h 20m / week		Craig H	Online	1.0	0983	2h 30m / week		Feldman M	Online	3.0	4119	6h 20m / week		Castillo L	Online	3.0
4104	6h 20m / week		Craig H	Online	1.0	4113	MW 2:00pm-3:15pm		Barrie B	Online	3.0		(03/29-05/21)				
<b>BIOL 31</b>	<b>ENVIRONMENTAL SCIENCE</b>											<b>BUSI 22</b>	<b>EFFECTIVE LEADERSHIP IN BUSINESS</b>				
0469	2h 30m / week		Kochevar R	Online	3.0	5035	Th 6:00pm-8:50pm		Peelman L	Online	3.0	0637	MW 9:30am-10:45am		Castillo L	Online	3.0
0496	3h 0m / week		Raskoff K	Online	3.0												
4105	3h 0m / week		Raskoff K	Online	3.0												
5030	3h 0m / week		Kochevar R	Online	3.0												
<b>BIOL 32</b>	<b>ENVIRONMENTAL SCIENCE LABORATORY</b>																
0073	3h 0m / week		Kochevar R	Online	1.0												
4106	3h 0m / week		Kochevar R	Online	1.0												

**Business**

<b>BUSI 1A</b>	<b>FINANCIAL ACCOUNTING</b>				
0055	4h 0m / week		Mikkelsen	Online	4.0
4108	4h 0m / week		Mikkelsen	Online	4.0
4109	4h 0m / week		Mikkelsen	Online	4.0
5032	4h 0m / week		Sobotka	Online	4.0
<b>BUSI 1B</b>	<b>MANAGERIAL ACCOUNTING</b>				
0598	4h 0m / week		O'Dell K	Online	4.0
4110	4h 0m / week		Mikkelsen	Online	4.0
5033	W 6:00pm-9:50pm		Roberts C	Online	4.0
<b>BUSI 18</b>	<b>BUSINESS LAW</b>				
4111	TTh 8:00am-9:15am		Castillo L	Online	3.0
4112	3h 0m / week		Castillo L	Online	3.0
5034	3h 0m / week		Castillo L	Online	3.0

**START OR GROW your business TODAY!**

- Busi 20: Intro to Business
- Busi 36: Intro to International Marketing
- Busi 44: Intro to Business Ownership/Mgmt
- Busi 46: Entrepreneurial Mindset
- Busi 50: Intro to Marketing
- Busi 54: Professional Selling

**MPC Ready to Work classes can Turn Your Dreams Into a Reality!**

SECTION	DAYS	TIME	INSTRUCTOR	ROOM	UNITS	SECTION	DAYS	TIME	INSTRUCTOR	ROOM	UNITS	SECTION	DAYS	TIME	INSTRUCTOR	ROOM	UNITS
<b>BUSI 44</b>		<b>INTRODUCTION TO BUSINESS OWNERSHIP/MANAGEMENT</b>				<b>BUSI 70</b>		<b>BUSINESS COMMUNICATION</b>				4572	6h 20m / week		Stewart M	Online	1.0
4120	W	6:00pm-8:50pm	Barrie B	Online	3.0	4122	3h 0m / week		O'Dell K	Online	3.0		(03/29-05/21)				
<b>BUSI 46</b>		<b>ENTREPRENEURIAL MINDSET</b>				<b>BUSI 110</b>		<b>BUSINESS MATHEMATICS</b>				<b>BUSC 150</b>		<b>COMPUTER APPLICATIONS - MICROSOFT EXCEL</b>			
1140	6h 20m / week		Barrie B	Online	3.0	0530	3h 0m / week		Sobotka	Online	3.0	0519	6h 20m / week		Stewart M	Online	1.0
	(03/29-05/21)					<b>BUSI 120A</b>		<b>BASIC ACCOUNTING</b>				0518	6h 20m / week		Stewart M	Online	1.0
<b>BUSI 50</b>		<b>INTRODUCTION TO MARKETING</b>				5038	T	6:00pm-9:50pm	Roberts C	Online	4.0		(03/29-05/21)				
1123	6h 20m / week		Barrie B	Online	3.0	<b>Business Skills Center</b>						<b>BUSC 160</b>		<b>COMPUTER APPLICATIONS - MICROSOFT POWERPOINT</b>			
	(03/29-05/21)					<b>BUSC 109</b>		<b>KEYBOARDING FOR COMPUTERS</b>				0746	6h 20m / week		Stewart M	Online	1.0
<b>BUSI 54</b>		<b>INTRODUCTION TO E-MARKETING</b>				0510	8h 25m / week		Walker J	Online	1.0		(03/29-05/21)				
1124	6h 20m / week		Hurtarte J	Online	3.0		(02/01-03/12)										
	(01/25-03/19)					0511	8h 25m / week		Walker J	Online	1.0	<b>Chemistry</b>					
<b>BUSI 60</b>		<b>FINANCIAL PLANNING AND MONEY MANAGEMENT</b>					(04/05-05/14)					<b>CHEM 1A</b>		<b>GENERAL CHEMISTRY I</b>			
5036	3h 0m / week		Barrie B	Online	3.0	<b>BUSC 140</b>		<b>COMPUTER APPLICATIONS - MICROSOFT WORD</b>				4125	3h 0m / week		Turner R	Online	5.0
<b>BUSI 64</b>		<b>CUSTOMER SERVICE</b>				0645	6h 20m / week		Stewart M	Online	1.0	& M	5:30pm-8:20pm		Turner R	Online	
0966	6h 20m / week		Jansen M	Online	3.0		(01/25-03/19)					& W	5:30pm-8:20pm		Turner R	Online	
	(01/25-03/19)											4126	3h 0m / week		Turner R	Online	5.0

# Jumpstart Your Career

Analyze real-world business challenges and apply solutions using Microsoft Office applications!

Business Skills courses are designed to develop foundational skills that prepare you for success in the work force. Improve keyboarding skills and complete Microsoft Office Specialist Certifications in PowerPoint, Excel, and Word.

- MS Application BUSC classes lead to certification
- Complete your exam at the end of the course

						<b>CHEM 1B</b>		<b>GENERAL CHEMISTRY II</b>				4130	3h 0m / week		Rivera F	Online	5.0
								& MW 10:00am-12:50pm		Rivera F	Online						
						4131	3h 0m / week		Rivera F	Online	5.0						
								& MW 2:00pm-4:50pm		Rivera F	Online						
						<b>CHEM 2</b>		<b>FUNDAMENTAL CHEMISTRY</b>				0610	4h 15m / week		Garcia Garcia	Online	4.0
								& F 9:00am-1:05pm		Garcia Garcia	Online						
								(02/22-05/21)				4132	3h 0m / week		Rivera F	Online	4.0
						4133	3h 0m / week		Rivera F	Online	4.0						
								& Th 2:00pm-4:50pm		Rivera F	Online						
						<b>CHEM 10</b>		<b>EVERYDAY CHEMISTRY</b>				0379	9h 40m / week		Bishop M	Online	4.0
								& Sat 9:00am-11:50am		Bishop M	Online						
								& 9h 40m / week		Bishop M	Online						
								(03/27-05/22)				<b>CHEM 12A</b>		<b>ORGANIC CHEMISTRY I</b>			
						0867	TTh	8:30am-9:45am	Turner R	Online	5.0						
								& TTh 10:00am-12:50pm		Turner R	Online						
						<b>CHEM 12B</b>		<b>ORGANIC CHEMISTRY II</b>				0586	MWF	9:00am-9:50am	Ritsem T	Online	5.0
								& MW 10:00am-12:50pm		Ritsem T	Online						
						4134	MWF	9:00am-9:50am	Ritsem T	Online	5.0						
								& MW 2:00pm-4:50pm		Ritsem T	Online						

SECTION	DAYS	TIME	INSTRUCTOR	ROOM	UNITS	SECTION	DAYS	TIME	INSTRUCTOR	ROOM	UNITS	SECTION	DAYS	TIME	INSTRUCTOR	ROOM	UNITS
<b>CHEM 30A INTRODUCTORY CHEMISTRY FOR HEALTH SCIENCES</b>																	
0180	MW & T	12:30pm-1:45pm 2:00pm-4:50pm	Thomas J	Online	4.0												
0849	MW & M	12:30pm-1:45pm 2:00pm-4:50pm	Thomas J	Online	4.0												
4137	MW & T	12:30pm-1:45pm 9:00am-11:50am	Thomas J	Online	4.0												
4139	MW & W	12:30pm-1:45pm 9:00am-11:50am	Thomas J	Online	4.0												
<b>CHEM 30B ORGANIC AND BIOLOGICAL CHEMISTRY FOR HEALTH SCIENCES</b>																	
0004	TTh & Th	5:30pm-6:45pm 2:00pm-4:50pm	Thomas J	Online	4.0												
<b>CSIS 50L MS OFFICE APPLICATIONS LAB</b>																	
0307		3h 0m / week	Stewart M	Online	1.0												
0350	M & T	4:30pm-5:45pm 1h 25m / week	Stewart M	Online	1.0												
<b>CSIS 72A MANAGING AND MAINTAINING WINDOWS SERVER</b>																	
0278		10h 35m / week (03/29-05/21)	Olsen J	Online	3.0												
<b>CSIS 76A CISCO CERTIFIED NETWORK ASSOCIATE (CCNA) 1</b>																	
0639		6h 0m / week	Singh D	Online	3.0												
<b>CSIS 76C CISCO CERTIFIED NETWORK ASSOCIATE (CCNA) 3</b>																	
1122		6h 0m / week	Singh D	Online	3.0												
<b>CSIS 80 INTRODUCTION TO UNIX AND LINUX</b>																	
4154		4h 0m / week	Olsen J	Online	3.0												
<b>CSIS 83A MICROSOFT CLIENT OPERATING SYSTEM</b>																	
0303		10h 35m / week (01/25-03/19)	Olsen J	Online	3.0												
<b>CSIS 86 NETWORK SECURITY FUNDAMENTALS/SECURITY+ PREP</b>																	
0293		6h 0m / week	Singh D	Online	3.0												
<b>CSIS 88 SECURITY PRACTICES: PENETRATION TESTING AND DISCOVERY</b>																	
0291		5h 0m / week	Olsen J	Online	3.0												
<b>Communication Studies</b>																	
<b>COMM 5 MASS MEDIA METHODS</b>																	
0452		3h 0m / week	Osburg	Online	3.0												
<b>Computer Science and Information Systems</b>																	
<b>CSIS 1 COMPUTER INFORMATION SYSTEMS</b>																	
0381		5h 0m / week	Olsen J	Online	3.0												
0520		5h 0m / week	Singh D	Online	3.0												
0806		5h 0m / week	Singh D	Online	3.0												
0887		10h 35m / week (03/29-05/21)	Singh D	Online	3.0												
<b>CSIS 9 PROGRAMMING FUNDAMENTALS: PYTHON</b>																	
0136		5h 0m / week	Seagal D	Online	3.0												
0888		10h 35m / week (03/29-05/21)	Stoykov A	Online	3.0												
<b>CSIS 10A PROGRAMMING METHODS I: JAVA</b>																	
0753		4h 15m / week	Rebold T	Online	4.0												
0941		5h 0m / week	Seagal D	Online	4.0												
4147		5h 0m / week	Seagal D	Online	4.0												
<b>CSIS 10B PROGRAMMING METHODS II: JAVA</b>																	
5057	MW	3:00pm-5:50pm	Rebold T	Online	4.0												
<b>CSIS 11 COMPUTER ARCHITECTURE AND ORGANIZATION</b>																	
0707		2h 0m / week & 3h 0m / week	Seagal D Seagal D	BMC206 3.0													
<b>CSIS 12 DISCRETE STRUCTURES</b>																	
1015	Th & T	9:00am-9:50am 3h 0m / week	Spence L Spence L	Online	3.0												
<b>CSIS 50 MS OFFICE APPLICATIONS</b>																	
0306		2h 0m / week	Staff	Online	2.0												
0349	M & T	3:30pm-4:20pm 1h 0m / week	Stewart M Stewart M	Online	2.0												

## Cooperative Work Experience



## COOPERATIVE WORK EXPERIENCE



### WORK • LEARN • EARN

*Did you know you can earn course credit while working at your job, internship, or volunteer work?*

### ASK US:

- How to find an internship
- How to use your current job for college credit
- How to get started

COOP can boost your grade point average and help you maintain full-time student status and you can pick up a COOP section at any time during the semester!

Contact:  
Maj-Britt Kimm or Lindsay Peelman  
mpc\_coop@mpc.edu  
or visit: [www.mpc.edu/coop](http://www.mpc.edu/coop)



SECTION	DAYS	TIME	INSTRUCTOR	ROOM	UNITS	SECTION	DAYS	TIME	INSTRUCTOR	ROOM	UNITS	SECTION	DAYS	TIME	INSTRUCTOR	ROOM	UNITS
<b>DANC 12C</b>	<b>BALLET III</b>																
0168	MW	5:00pm-6:50pm	Keindl P	Online	1.0												
<b>DANC 12D</b>	<b>BALLET IV</b>																
0633	MW	5:00pm-6:50pm	Keindl P	Online	1.0												
<b>DANC 14A</b>	<b>BALLROOM DANCE I</b>																
4987	T	7:00pm-8:50pm	Woods M	DA101	0.5												
<b>DANC 14B</b>	<b>BALLROOM DANCE II</b>																
0450	T	7:00pm-8:50pm	Woods M	DA101	0.5												
<b>DANC 14C</b>	<b>BALLROOM DANCE III</b>																
0451	T	7:00pm-8:50pm	Woods M	DA101	0.5												
<b>DANC 14D</b>	<b>BALLROOM DANCE IV</b>																
0342	T	7:00pm-8:50pm	Woods M	DA101	0.5												
<b>DANC 15A</b>	<b>ETHNIC DANCE FORMS I</b>																
0314	MW	6:30pm-8:20pm	Sinclair	Online	1.0												
<b>DANC 15B</b>	<b>ETHNIC DANCE FORMS II</b>																
0223	MW	6:30pm-8:20pm	Sinclair	Online	1.0												
<b>DANC 15C</b>	<b>ETHNIC DANCE FORMS III</b>																
0316	MW	6:30pm-8:20pm	Sinclair	Online	1.0												
<b>DANC 15D</b>	<b>ETHNIC DANCE FORMS IV</b>																
0224	MW	6:30pm-8:20pm	Sinclair	Online	1.0												
<b>DANC 19A</b>	<b>SALSA DANCE I</b>																
0321	Th	7:00pm-8:50pm	Woods M	DA101	0.5												
<b>DANC 19B</b>	<b>SALSA DANCE II</b>																
0289	Th	7:00pm-8:50pm	Woods M	DA101	0.5												
<b>DANC 19C</b>	<b>SALSA DANCE III</b>																
0104	Th	7:00pm-8:50pm	Woods M	DA101	0.5												
<b>DANC 20A</b>	<b>DANCE PRODUCTION - MODERN DANCE</b>																
0904	4h 0m / week		Ross D	Online	1.0												
<b>DANC 20B</b>	<b>DANCE PRODUCTION - JAZZ</b>																
0905	4h 0m / week		Ross D	Online	1.0												
<b>DANC 20C</b>	<b>DANCE PRODUCTION - ETHNIC DANCE</b>																
0323	4h 0m / week		Ross D	Online	1.0												
<b>DANC 20D</b>	<b>DANCE PRODUCTION - BALLET</b>																
0695	4h 0m / week		Ross D	Online	1.0												
<b>DANC 21</b>	<b>INTRODUCTION TO REPERTORY - JAZZ</b>																
0906	4h 0m / week		Ross D	Online	1.0												
<b>Dental Assisting</b>																	
<b>DNTL 107</b>	<b>CORONAL POLISH</b>																
0899	MTWThF	12:30pm-4:50pm	Hopkins Carp	LS202	0.5												
	& MTWThF	12:30pm-4:50pm	Miller L	LS202													
	(Early Spring Course - 01/04-01/11)																
4155	MTWThF	7:45am-12:05pm	Hopkins Carp	LS202	0.5												
	& MTWThF	7:45am-12:05pm	Miller L	LS202													
	(Early Spring Course - 01/04-01/11)																
<b>Early Childhood Education</b>																	
<b>ECED 1</b>	<b>CHILD GROWTH AND DEVELOPMENT</b>																
0322	3h 0m / week		Lee D	Online	3.0												
0792	2h 45m / week		Robinson N	Online	3.0												
4141	3h 0m / week		Lee D	Online	3.0												
4142	6h 20m / week		Lee D	Online	3.0												
	(03/29-05/21)																
<b>ECED 2</b>	<b>OBSERVATION AND ASSESSMENT</b>																
5048	3h 0m / week		Nyznyk	Online	3.0												
<b>ECED 51</b>	<b>PRINCIPLES AND PRACTICES OF TEACHING YOUNG CHILDREN</b>																
4143	3h 0m / week		Galer K	Online	3.0												
<b>ECED 52</b>	<b>PRACTICUM: FIELD TEACHING EXPERIENCE</b>																
0195	W	6:00pm-9:20pm	Procive	Online	4.0												
	& 6h 0m / week		Procive	TBA													
<b>ECED 55</b>	<b>CHILD, FAMILY, AND COMMUNITY</b>																
0196	3h 0m / week		Lee D	Online	3.0												
<b>ECED 56</b>	<b>TEACHING IN A DIVERSE SOCIETY</b>																
0529	3h 0m / week		Lee D	Online	3.0												
0578	2h 45m / week		Millovich	Online	3.0												
<b>ECED 63A</b>	<b>INTRODUCTION TO CHILDREN WITH SPECIAL NEEDS</b>																
0515	6h 20m / week		Oswald A	Online	3.0												
	(01/25-03/19)																
<b>ECED 63B</b>	<b>CURRICULUM STRATEGIES FOR CHILDREN WITH SPECIAL NEEDS</b>																
0534	6h 20m / week		Oswald A	Online	3.0												
	(03/29-05/21)																
<b>ECED 72</b>	<b>ADULT SUPERVISION AND MENTORING IN EARLY CARE AND EDUCATION</b>																
0955	11h 20m / week		Procive	Online	2.0												
	(Early Spring Course - 01/05-01/20)																



**Dental Assisting**

<b>DNTL 107</b>	<b>CORONAL POLISH</b>																
0899	MTWThF	12:30pm-4:50pm	Hopkins Carp	LS202	0.5												
	& MTWThF	12:30pm-4:50pm	Miller L	LS202													
	(Early Spring Course - 01/04-01/11)																
4155	MTWThF	7:45am-12:05pm	Hopkins Carp	LS202	0.5												
	& MTWThF	7:45am-12:05pm	Miller L	LS202													
	(Early Spring Course - 01/04-01/11)																

**Early Childhood Education**

<b>ECED 1</b>	<b>CHILD GROWTH AND DEVELOPMENT</b>																
0322	3h 0m / week		Lee D	Online	3.0												

0792	2h 45m / week		Robinson N	Online	3.0												
4141	3h 0m / week		Lee D	Online	3.0												
4142	6h 20m / week		Lee D	Online	3.0												
	(03/29-05/21)																
<b>ECED 2</b>	<b>OBSERVATION AND ASSESSMENT</b>																
5048	3h 0m / week		Nyznyk	Online	3.0												
<b>ECED 51</b>	<b>PRINCIPLES AND PRACTICES OF TEACHING YOUNG CHILDREN</b>																
4143	3h 0m / week		Galer K	Online	3.0												
<b>ECED 52</b>	<b>PRACTICUM: FIELD TEACHING EXPERIENCE</b>																
0195	W	6:00pm-9:20pm	Procive	Online	4.0												
	& 6h 0m / week		Procive	TBA													
<b>ECED 55</b>	<b>CHILD, FAMILY, AND COMMUNITY</b>																
0196	3h 0m / week		Lee D	Online	3.0												
<b>ECED 56</b>	<b>TEACHING IN A DIVERSE SOCIETY</b>																
0529	3h 0m / week		Lee D	Online	3.0												
0578	2h 45m / week		Millovich	Online	3.0												
<b>ECED 63A</b>	<b>INTRODUCTION TO CHILDREN WITH SPECIAL NEEDS</b>																
0515	6h 20m / week		Oswald A	Online	3.0												
	(01/25-03/19)																
<b>ECED 63B</b>	<b>CURRICULUM STRATEGIES FOR CHILDREN WITH SPECIAL NEEDS</b>																
0534	6h 20m / week		Oswald A	Online	3.0												
	(03/29-05/21)																
<b>ECED 72</b>	<b>ADULT SUPERVISION AND MENTORING IN EARLY CARE AND EDUCATION</b>																
0955	11h 20m / week		Procive	Online	2.0												
	(Early Spring Course - 01/05-01/20)																

SECTION	DAYS	TIME	INSTRUCTOR	ROOM	UNITS	SECTION	DAYS	TIME	INSTRUCTOR	ROOM	UNITS	SECTION	DAYS	TIME	INSTRUCTOR	ROOM	UNITS
---------	------	------	------------	------	-------	---------	------	------	------------	------	-------	---------	------	------	------------	------	-------

# build knowledge & skills

# to advance your your career today!

MPC's "Ready to Work" programs  
prepare you for rewarding careers

-  AUTOMOTIVE TECHNOLOGY
-  FIRE ACADEMY
-  BUSINESS
-  HOSPITALITY
-  NETWORKING & SECURITY
-  MEDICAL ASSISTING
-  DENTAL ASSISTING
-  NUTRITION & FOOD
-  EARLY CHILDHOOD ED
-  REAL ESTATE

For more information on all MPC's Career Education  
programs and courses visit: [mpc.edu/cte](http://mpc.edu/cte)

SECTION	DAYS	TIME	INSTRUCTOR	ROOM	UNITS	SECTION	DAYS	TIME	INSTRUCTOR	ROOM	UNITS	SECTION	DAYS	TIME	INSTRUCTOR	ROOM	UNITS					
<b>ECEd 80</b>	<b>INTRODUCTION TO CURRICULUM</b>																					
0403	3h	0m / week	Galer K	Online	3.0							5070	4h	0m / week	Parker A	TBA	2.0					
<b>ECEd 82</b>	<b>SCIENCE AND MATH CURRICULUM</b>																					
0537	6h	20m / week (01/25-03/19)	Nyznyk	Online	3.0							5071	4h	0m / week	Parker A	TBA	2.0					
<b>ECEd 84</b>	<b>LANGUAGE AND LITERACY CURRICULUM</b>																					
0538	6h	20m / week (03/29-05/21)	Redinger G	Online	3.0							<b>EMMS 270R EMT-1 RECERTIFICATION</b>					0179	1h	45m / week	Parker A	SPS101	0.5

**Economics**

<b>ECON 1</b>	<b>THE AMERICAN ECONOMIC SYSTEM</b>																
0531	TTh	9:30am-10:45am	Morgan D	Online	3.0												
<b>ECON 2</b>	<b>PRINCIPLES OF ECONOMICS: MACRO</b>																
0735	3h	0m / week	Albert	Online	3.0												
4164	MW	3:30pm-4:45pm	Morgan D	Online	3.0												
4165	3h	0m / week	Saha S	Online	3.0												
<b>ECON 4</b>	<b>PRINCIPLES OF ECONOMICS: MICRO</b>																
0528	3h	0m / week	Albert	Online	3.0												
4167	3h	0m / week	Albert	Online	3.0												
4169	3h	0m / week	Saha S	Online	3.0												

**Education**

<b>EDUC 1</b>	<b>INTRODUCTION TO TEACHING AND EDUCATION</b>																
0170	2h	0m / week	Luke J	Online	2.0												
0727	4h	15m / week (03/29-05/21)	Luke J	Online	2.0												
<b>EDUC 1L</b>	<b>EDUCATION SERVICE LEARNING LAB</b>																
0485	3h	0m / week	Luke J	Online	1.0												
<b>EDUC 2</b>	<b>CRITICAL THINKING AND PUBLIC EDUCATION</b>																
0780	3h	0m / week	Luke J	Online	3.0												

**Emergency Medical Services**

<b>EMMS 170A</b>	<b>EMERGENCY MEDICAL TECHNICIAN 1: BASIC TRAINING</b>																
0333	MW	6:00pm-9:05pm & 1h 25m / week	Parker A	Online	7.0												
0335	TTh	6:00pm-9:05pm & 1h 25m / week	Parker A	Online	7.0												
0810	22h	35m / week (01/18-02/28)	Futoran J	MTC	7.0												
<b>EMMS 170B</b>	<b>EMERGENCY MEDICAL TECHNICIAN 1: BASIC TRAINING APPLICATION</b>																
0813	11h	20m / week (01/18-02/28)	Futoran J	MTC	2.0												

**Engineering**

<b>ENGR 1A</b>	<b>INTRODUCTION TO ENGINEERING</b>																
0804	T	5:00pm-5:50pm	Hacker V	Online	3.0												
	& Th	4:00pm-6:50pm	Hacker V	Online													
<b>ENGR 2</b>	<b>ENGINEERING DESIGN GRAPHICS</b>																
5069	5h	0m / week	Hacker V	Online	3.0												
<b>ENGR 4</b>	<b>ENGINEERING MATERIALS</b>																
0384	MW	6:00pm-7:15pm	Hurtarte J	Online	4.0												
	& MW	7:30pm-8:45pm	Hurtarte J	Online													
<b>ENGR 12</b>	<b>ENGINEERING CIRCUITS</b>																
0697	MWThF	1:00pm-1:50pm	Rebold T	Online	3.0												
<b>ENGR 12L</b>	<b>ENGINEERING CIRCUITS LABORATORY</b>																
4320	T	1:00pm-3:50pm	Pedersen J	Online	1.0												
<b>ENGR 17</b>	<b>PROGRAMMING AND PROBLEM-SOLVING IN MATLAB</b>																
4321	TTh	4:00pm-5:50pm	Rebold T	Online	3.0												
	& 1h	0m / week	Rebold T	Online													

**ENROLL IN A FIRST RESPONDER TRAINING PROGRAM AT MPC!**

Our instructors, with real world work experience in Fire, Law Enforcement, and EMT, will guide you through developing the knowledge and skills you need to become an essential worker serving your community.

[www.mpc.edu/pstc](http://www.mpc.edu/pstc)





SECTION	DAYS	TIME	INSTRUCTOR	ROOM	UNITS	SECTION	DAYS	TIME	INSTRUCTOR	ROOM	UNITS	SECTION	DAYS	TIME	INSTRUCTOR	ROOM	UNITS
---------	------	------	------------	------	-------	---------	------	------	------------	------	-------	---------	------	------	------------	------	-------

# MPC Literature Classes: the great escape!

Take a class this spring from expert faculty who will guide your experience!

ENGL 1B: Introduction to Literature

ENGL 25B: Great Books Seminar

ENGL 18: The Bible as Literature

ENGL 40: Survey of American Literature II

ENGL 22: Introduction to Poetry

ENGL 46: British Literature I



## English

### ENGL 1A COLLEGE COMPOSITION

0091	3h 0m / week	Bachman E	Online	3.0
0102	3h 0m / week	Dennehy	Online	3.0
0107	3h 0m / week	Headley	Online	3.0
0110	MW 9:30am-10:45am	Harray	Online	3.0
0114	3h 0m / week	Kary B	Online	3.0
0122	3h 0m / week	Gerard J	Online	3.0
0131	3h 0m / week	Kary B	Online	3.0
0255	W 6:00pm-8:50pm	Hulanicki	Online	3.0
0273	3h 0m / week	Penney	Online	3.0
0369	3h 0m / week	Penney	Online	3.0
0481	3h 0m / week	McMillen J	Online	3.0
0591	6h 20m / week (03/29-05/21)	Penney	Online	3.0
0939	3h 0m / week	Gerard J	Online	3.0
0940	TTh 11:00am-12:15pm	May M	Online	3.0
0944	3h 0m / week	Penney	Online	3.0
4323	MW 12:30pm-1:45pm	lbessaine	Online	3.0
4325	3h 0m / week	McMillen J	Online	3.0
4327	3h 0m / week	Marchand H	Online	3.0
4328	3h 0m / week	Eubanks K.	Online3.0	4328
	3h 0m / week	Eubanks K.	Online	3.0
4330	MW 11:00am-12:15pm	lbessaine	Online	3.0
4331	3h 0m / week	Converse J	Online	3.0
4334	3h 0m / week	Watson L	Online	3.0
4336	3h 0m / week	Wehner K	Online	3.0

4337	3h 0m / week	Watson L	Online	3.0
4340	3h 0m / week	Gilbert P	Online	3.0
4341	3h 0m / week	Dennehy	Online	3.0

### ENGL 1B INTRODUCTION TO LITERATURE

4342	3h 0m / week	Johnson A	Online	3.0
4344	3h 0m / week	Dennehy	Online	3.0

### ENGL 2 ARGUMENTATIVE WRITING AND CRITICAL THINKING

0275	3h 0m / week	Osburg	Online	3.0
0425	3h 0m / week	Gilbert P	Online	3.0
0436	TTh 9:30am-10:45am	Hulanicki	Online	3.0
0750	3h 0m / week	Eubanks K.	Online	3.0
0820	6h 20m / week (03/29-05/21)	Fetter E	Online	3.0
0945	6h 20m / week (03/29-05/21)	Fetter E	Online	3.0
0946	3h 0m / week	Kary B	Online	3.0
4345	3h 0m / week	Eubanks K.	Online	3.0
4347	3h 0m / week	Wehner K	Online	3.0
4348	MW 9:30am-10:45am	Haffa	Online	3.0
4349	3h 0m / week	Kary B	Online	3.0
4350	3h 0m / week	Osburg	Online	3.0
4354	TTh 11:00am-12:15pm	Haffa	Online	3.0
4355	3h 0m / week	Eubanks K.	Online	3.0
5076	TTh 12:30pm-1:45pm	Haffa	Online	3.0

### ENGL 18 THE BIBLE AS LITERATURE

0772	3h 0m / week	Gilbert P	Online	3.0
------	--------------	-----------	--------	-----

### ENGL 22 INTRODUCTION TO POETRY

0304	3h 0m / week	Dennehy	Online	3.0
------	--------------	---------	--------	-----

### ENGL 25B GREAT BOOKS SEMINAR II

0288	1h 0m / week	Penney	Online	1.0
------	--------------	--------	--------	-----

### ENGL 32 CREATIVE WRITING II

0246	3h 0m / week	Marchand H	Online	3.0
------	--------------	------------	--------	-----

### ENGL 40B SURVEY OF AMERICAN LITERATURE II

0305	3h 0m / week	Johnson A	Online	3.0
------	--------------	-----------	--------	-----

### ENGL 46 SURVEY OF BRITISH LITERATURE I

0290	3h 0m / week	Gilbert P	Online	3.0
------	--------------	-----------	--------	-----

### ENGL 51 FICTION WRITING

0921	3h 0m / week	Marchand H	Online	3.0
------	--------------	------------	--------	-----

### ENGL 55 NOVEL WRITING II

0313	T 6:00pm-8:50pm	Marchand H	Online	3.0
------	-----------------	------------	--------	-----

### ENGL 101A COLLEGE COMPOSITION PLUS

0106	2h 0m / week	Dennehy	Online	2.0
0108	2h 0m / week	Headley	Online	2.0
0112	MW 11:00am-11:50am	Harray	Online	2.0
0120	2h 0m / week	Kary B	Online	2.0
0123	2h 0m / week	Gerard J	Online	2.0
0133	2h 0m / week	Kary B	Online	2.0
0942	TTh 12:30pm-1:20pm	May M	Online	2.0

### ENGL 111 ACADEMIC READING AND WRITING

0078	4h 0m / week	Fujimoto S	Online	4.0
0936	4h 0m / week	Fujimoto S	Online	4.0

# ENGLISH AS A SECOND LANGUAGE

Highly interactive courses designed to help non-native English speakers communicate by gaining fluency in listening, speaking, reading, and writing English.

[www.mpc.edu/ensl](http://www.mpc.edu/ensl)

## Lower levels (1,2,3)

- Focus on fundamentals
- Highly interactive
- Supportive learning environment

## Upper levels (4,5,6)

- Focus on academic reading & writing
- Prepares students to succeed at 4-year colleges
- Level 6 classes transferable

### ENGL 300 PERSONALIZED WRITING INSTRUCTION

4387	1h 25m / week	Lemoine S	Online	0.5
4389	3h 0m / week	Lemoine S	Online	1.0

### ENGL 351 COLLEGE READING STRATEGIES I

0039	1h 25m / week	Moses I	Online	0.5
------	---------------	---------	--------	-----

### ENGL 352 COLLEGE READING STRATEGIES II

0040	1h 25m / week	Moses I	Online	0.5
------	---------------	---------	--------	-----

### ENGL 400 ACADEMIC SUPPORT

4421	9h 0m / week	Gerard A	TBA	0.0
------	--------------	----------	-----	-----

## English As A Second Language

### ENSL 11 ADVANCED READING AND WRITING

0326	TTh	1:00pm-3:15pm	Gorman D	Online	5.0
------	-----	---------------	----------	--------	-----

### ENSL 321 HIGH-BEGINNING READING AND WRITING

0163	MW	6:00pm-8:15pm	Warren N	Online	5.0
0260	TTh	8:30am-10:45am	Sanders C	Online	5.0

### ENSL 323 HIGH-BEGINNING SPEAKING AND LISTENING

0262	MW	9:00am-10:50am	Brady B	Online	4.0
------	----	----------------	---------	--------	-----

**ENSL 326 ENGLISH SKILLS FOR SUCCESS I**

0277	MTWThF	9:00am-11:05am	Sanders C	Online	2.0
------	--------	----------------	-----------	--------	-----

(Early Spring Course - 01/04-01/22)

### ENSL 328 PRONUNCIATION AND SPELLING

0751	4h 0m / week	Dietrich-Har	Online	4.0
------	--------------	--------------	--------	-----

### ENSL 331 LOW-INTERMEDIATE READING AND WRITING

0264	TTh	8:30am-10:45am	Partch Penny	Online	5.0
------	-----	----------------	--------------	--------	-----

### ENSL 334 LOW-INTERMEDIATE SPEAKING AND LISTENING

0375	TTh	6:00pm-7:50pm	Nelson J	Online	4.0
4452	MW	9:00am-10:50am	Nelson J	Online	4.0

### ENSL 336 ENGLISH SKILLS FOR SUCCESS II

0334	5h 5m / week	Staff	Online	3.0
------	--------------	-------	--------	-----

(03/01-05/12)

### ENSL 337 LOW-INTERMEDIATE ESL FOR THE WORKPLACE

0380	3h 40m / week	Gorman D	Online	2.0
------	---------------	----------	--------	-----

(02/09-04/15)

### ENSL 342 INTERMEDIATE READING AND WRITING

4455	TTh	8:30am-10:45am	Nelson J	Online	5.0
------	-----	----------------	----------	--------	-----

### ENSL 345 INTERMEDIATE SPEAKING AND LISTENING

0929	MW	6:00pm-7:50pm	VanGundy A	Online	4.0
4456	MW	9:00am-10:50am	Partch Penny	Online	4.0

### ENSL 346 HIGH-INTERMEDIATE READING AND WRITING: AMERICAN CULTURE

0266	TTh	1:00pm-3:15pm	Partch Penny	Online	5.0
------	-----	---------------	--------------	--------	-----

### ENSL 348 HIGH-INTERMEDIATE SPEAKING AND LISTENING

0175	TTh	11:00am-12:50pm	Sanders C	Online	4.0
------	-----	-----------------	-----------	--------	-----

### ENSL 421 HIGH-BEGINNING READING AND WRITING

0166	MW	6:00pm-8:15pm	Warren N	Online	0.0
0261	TTh	8:30am-10:45am	Sanders C	Online	0.0

### ENSL 423 HIGH-BEGINNING SPEAKING AND LISTENING

0263	MW	9:00am-10:50am	Brady B	Online	0.0
------	----	----------------	---------	--------	-----

### ENSL 426 ENGLISH SKILLS FOR SUCCESS I

0276	MTWThF	9:00am-11:05am	Sanders C	Online	0.0
------	--------	----------------	-----------	--------	-----

(Early Spring Course - 01/04-01/22)

SECTION	DAYS	TIME	INSTRUCTOR	ROOM	UNITS	SECTION	DAYS	TIME	INSTRUCTOR	ROOM	UNITS	SECTION	DAYS	TIME	INSTRUCTOR	ROOM	UNITS
<b>ENSL 428 PRONUNCIATION AND SPELLING</b>						<b>ETNC 22 ASIAN AMERICANS AND PACIFIC ISLANDERS IN AMERICAN SOCIETY</b>						<b>FPTC 105A FIREFIGHTER I ACADEMY</b>					
0775	4h	0m / week	Dietrich-Har	Online	0.0	0748	6h	20m / week (03/29-05/21)	Cabrera V	Online	3.0	0418	TTh	6:00pm-9:50pm	Greenlee G	SPS119	14.5
<b>ENSL 431 LOW-INTERMEDIATE READING AND WRITING</b>						<b>ETNC 23 CHICANO HISTORY 1848 TO PRESENT</b>						& SatSun	6:00am-7:50am	Greenlee G	SPS119		
0265	TTh	8:30am-10:45am	Partch Penny	Online	0.0	0783	TTh	9:30am-10:45am	Serena D	Online	3.0	& SatSun	8:00am-11:50am	Greenlee G	SPS119		
<b>ENSL 434 LOW-INTERMEDIATE SPEAKING AND LISTENING</b>						<b>ETNC 30 GENDER IN GLOBAL PERSPECTIVE</b>						& SatSun	1:00pm-4:50pm	Greenlee G	SPS119		
0376	TTh	6:00pm-7:50pm	Nelson J	Online	0.0	0498	3h	0m / week	Davis D	Online	3.0						
4463	MW	9:00am-10:50am	Nelson J	Online	0.0	<b>ETNC 45 INTRODUCTION TO LANGUAGE AND SOCIETY</b>											
<b>ENSL 436 ENGLISH SKILLS FOR SUCCESS II</b>						0470	3h	0m / week	Abend	Online	3.0	<b>FPTC 112D INSTRUCTOR I - INSTRUCTIONAL METHODOLOGY</b>					
0368	5h	5m / week (03/01-05/12)	Staff	Online	0.0							1093	40h	40m / week	Smith C	CDFGR	1.0
<b>ENSL 437 LOW-INTERMEDIATE ESL FOR THE WORKPLACE</b>												(Early Spring Course - 01/18-01/22)	<b>FPTC 117 VEHICLE EXTRICATION</b>				
0383	3h	40m / week (02/09-04/15)	Gorman D	Online	0.0							1069	24h	10m / week (03/01-03/05)	Staff	SPS119	0.5
<b>ENSL 442 INTERMEDIATE READING AND WRITING</b>																	
4466	TTh	8:30am-10:45am	Nelson J	Online	0.0							<b>FPTC 118 LOW-ANGLE ROPE RESCUE</b>					
<b>ENSL 445 INTERMEDIATE SPEAKING AND LISTENING</b>												1071	24h	10m / week (03/01-03/05)	Staff	SPS119	0.5
0931	MW	6:00pm-7:50pm	VanGundy A	Online	0.0												
4467	MW	9:00am-10:50am	Partch Penny	Online	0.0							<b>FPTC 119 RAPID INTERVENTION CREW OPERATIONS</b>					
<b>ENSL 446 HIGH-INTERMEDIATE READING AND WRITING: AMERICAN CULTURE</b>												1073	24h	10m / week (03/08-03/12)	Staff	SPS119	0.5
0267	TTh	1:00pm-3:15pm	Partch Penny	Online	0.0												
<b>ENSL 448 HIGH-INTERMEDIATE SPEAKING AND LISTENING</b>												<b>FPTC 126 CONFINED-SPACE RESCUE TECHNICIAN</b>					
0176	TTh	11:00am-12:50pm	Sanders C	Online	0.0							1074	22h	30m / week (03/08-03/12)	Staff	SPS119	0.5

## Ethnic Studies

<b>ETNC 4 MEXICAN-AMERICAN ART IN AMERICAN CULTURE</b>					
0192	MW	9:30am-10:45am	Serena D	Online	3.0
0585	2h	25m / week	Batista V	Online	3.0
<b>ETNC 5 AFRICAN-AMERICAN ARTS AND MUSIC IN AMERICAN CULTURE</b>					
0186	6h	20m / week (03/29-05/21)	Cabrera V	Online	3.0
0846	T	12:30pm-1:45pm & 1h 25m / week	Batista V Batista V	Online	3.0
<b>ETNC 6 CULTURE IN AMERICAN FILM</b>					
0437	3h	0m / week	Albert M	Online	3.0
<b>ETNC 10 INTRODUCTION TO SOCIAL JUSTICE</b>					
0719	6h	20m / week (1/25-3/17)	Cabrera V	Online	3.0
<b>ETNC 14 SOCIOLOGY OF LATINOS AND LATINAS</b>					
0741	TTh	11:00am-12:15pm	Villarreal A	Online	3.0
<b>ETNC 18 LATINOS IN AMERICAN GOVERNMENT</b>					
0487	W	5:30pm-6:45pm & 1h 25m / week	Martinez L Martinez L	Online	3.0

## Fashion

<b>FASH 61 GARMENT CONSTRUCTION I</b>					
0558	Th	10:00am-11:50am & 1h 0m / week	Schneider E Schneider E	Online	1.5
<b>FASH 68 FLAT PATTERN DESIGN I</b>					
0567	Th	12:00pm-1:50pm & 3h 0m / week	Schneider E Schneider E	Online	3.0
<b>FASH 80 TEXTILE DESIGN</b>					
0392	Th	2:00pm-3:50pm & 1h 0m / week	Staff Staff	Online	1.5

## Fire Protection Technology

MPC Public Safety Training Center,  
2642 Colonel Durham St., Seaside, CA 93955

Contact the Public Safety Training Center at  
831-646-4240 for additional information

<b>FPTC 1 PRINCIPLES OF EMERGENCY SERVICES</b>					
5093	3h	0m / week	Reed Roger	Online	3.0
<b>FPTC 2 FIRE BEHAVIOR AND COMBUSTION</b>					
0448	3h	0m / week	Goodwin	Online	3.0
<b>FPTC 4 BUILDING CONSTRUCTION FOR FIRE PREVENTION</b>					
0178	3h	0m / week	Prado A	Online	3.0
<b>FPTC 100 RESCUE SYSTEMS 1: BASIC RESCUE SKILLS</b>					
1089	42h	25m / week (Early Spring Course -01/04-01/08)	Staff	SPS119	1.0
<b>FPTC 104A FIRE APPARATUS DRIVER/ OPERATOR 1A: EMERGENCY VEHICLE OPS</b>					
1090	40h	40m / week (Early Spring Course - 01/04-01/08)	Staff	SPS119	1.0
<b>FPTC 104B FIRE APPARATUS DRIVER/ OPERATOR 1B: PUMP OPERATIONS</b>					
1091	40h	15m / week (Early Spring Course - 01/04-01/08)	Staff	SPS119	1.0

<b>FPTC 105A FIREFIGHTER I ACADEMY</b>					
0418	TTh	6:00pm-9:50pm	Greenlee G	SPS119	14.5
	& SatSun	6:00am-7:50am	Greenlee G	SPS119	
	& SatSun	8:00am-11:50am	Greenlee G	SPS119	
	& SatSun	1:00pm-4:50pm	Greenlee G	SPS119	
<b>FPTC 105B FIREFIGHTER I ACADEMY APPLICATION</b>					
4489	13h	15m / week	Greenlee G	SPS119	6.0
<b>FPTC 112D INSTRUCTOR I - INSTRUCTIONAL METHODOLOGY</b>					
1093	40h	40m / week	Smith C	CDFGR	1.0
	(Early Spring Course - 01/18-01/22)				
<b>FPTC 117 VEHICLE EXTRICATION</b>					
1069	24h	10m / week (03/01-03/05)	Staff	SPS119	0.5
<b>FPTC 118 LOW-ANGLE ROPE RESCUE</b>					
1071	24h	10m / week (03/01-03/05)	Staff	SPS119	0.5
<b>FPTC 119 RAPID INTERVENTION CREW OPERATIONS</b>					
1073	24h	10m / week (03/08-03/12)	Staff	SPS119	0.5
<b>FPTC 126 CONFINED-SPACE RESCUE TECHNICIAN</b>					
1074	22h	30m / week (03/08-03/12)	Staff	SPS119	0.5
<b>FPTC 127A S-212 WILDLAND FIRE CHAINSAWS</b>					
1075	36h	15m / week (03/15-03/19)	Staff	SPS119	0.5
<b>FPTC 127B S-290 INTERMEDIATE WILDLAND FIRE BEHAVIOR</b>					
1077	32h	10m / week (03/15-03/19)	Staff	SPS119	0.5
<b>FPTC 130B COMPANY OFFICER 2B - GENERAL ADMINISTRATIVE</b>					
1080	22h	25m / week (05/24-05/28)	Smith C	CDFGR	1.0
<b>FPTC 130C COMPANY OFFICER 2C - FIRE INSPECTIONS AND INVESTIGATIONS</b>					
1081	41h	10m / week (05/31-06/04)	Smith C	CDFGR	2.0
<b>FPTC 130D COMPANY OFFICER 2D - ALL-RISK COMMAND OPERATIONS</b>					
1082	46h	40m / week (01/25-01/29)	Staff	SPS119	2.0
<b>FPTC 130E COMPANY OFFICER 2E - WILDLAND INCIDENT OPERATIONS</b>					
1083	46h	40m / week (02/01-02/05)	Staff	SPS119	2.0
<b>FPTC 131 HAZARDOUS MATERIAL INCIDENT COMMANDER TRAINING</b>					
1084	24h	10m / week (03/22-03/26)	Staff	SPS119	0.5

SECTION	DAYS	TIME	INSTRUCTOR	ROOM	UNITS	SECTION	DAYS	TIME	INSTRUCTOR	ROOM	UNITS	SECTION	DAYS	TIME	INSTRUCTOR	ROOM	UNITS
---------	------	------	------------	------	-------	---------	------	------	------------	------	-------	---------	------	------	------------	------	-------

# GENTRAIN

Free NON-CREDIT learning opportunity at MPC



Join us to learn about World Civilization • Literature Drama • Philosophy • Religion History • Art

The GENTRAIN program is comprised of 16 different units progressing through time from the ancient world to the present.

A new unit begins each month and students needing a late start course can be accommodated.

Classes offered completely online this Fall!

### Spring GENTRAIN Units include:

- GENT 5/405 - The Medieval World: Part I (02/23-03/18)
- GENT 6/406 - The Medieval World: Part II (03/30-04/22)
- GENT 7/407 - The Early Renaissance (04/27-05/30)
- GENT 21 - Medieval & Renaissance Europe (02/23-05/20)

GENTRAIN classes may be taken non-credit (400 series) for free OR for college-credit (courses numbered 1-23) with paid tuition and fees that may satisfy GE requirements and transfer.

Visit [www.mpc.edu/gentrain](http://www.mpc.edu/gentrain) to learn more.

**FPTC 135 ETHICAL LEADERSHIP**  
1085 8h 25m / week Staff SPS119 0.5  
(Early Spring Course - 01/15-01/15)

**FPTC 140 I-300 INTERMEDIATE INCIDENT COMMAND SYSTEM**  
1086 25h 25m / week Staff SPS119 0.5  
(02/18-02/20)

**FPTC 141 I-400 INCIDENT COMMAND SYSTEM**  
1087 17h 0m / week Staff SPS119 1.0  
(02/22-02/24)

**FPTC 142 I-200 BASIC INCIDENT COMMAND SYSTEM**  
1088 16h 10m / week Staff SPS119 0.5  
(02/25-02/26)

**FPTC 213 SKILLS AND KNOWLEDGE UPDATE FOR FULL-TIME FIREFIGHTERS**  
0420 4h 40m / week Blaha R SFD 3.0  
0423 4h 40m / week Brotemarkle HFD 3.0  
0505 4h 40m / week Courtney J MFD 3.0  
0546 4h 40m / week Urquides MCRFPD 3.0  
0686 4h 40m / week Lundgren J TBA 3.0

**FPTC 214 SKILLS & KNOWLEDGE UPDATE FOR VOLUNTEER/RESERVE FIREFIGHTERS**  
0553 1h 30m / week Fisher F CFPD 1.0  
0554 2h 20m / week Goetz C MCFB 1.5  
0555 1h 30m / week Blaha R SFD 1.0  
0556 1h 30m / week Smith C BSFB 1.0  
0557 1h 30m / week Urquides MCRFPD 1.0  
0674 1h 30m / week Lundgren J TBA 1.0

**FPTC 401 COMMUNITY EMERGENCY RESPONSE TRAINING**  
1094 24h 25m / week Staff SPS119 0.0  
(Early Spring Course - 01/11-01/15)

## French

**FREN 1A ELEMENTARY FRENCH I**  
0773 MTWTh 5:30pm-6:35pm Michael Online 5.0  
& 5h 40m / week Michael Online  
(02/16-04/16)

0922 MW 11:00am-12:30pm Gonzales L Online 5.0  
& 1h 20m / week Gonzales L Online

**FREN 1B ELEMENTARY FRENCH II**  
4514 TTh 11:00am-12:30pm Gonzales L Online 5.0  
& 1h 20m / week Gonzales L Online

**FREN 2A INTERMEDIATE FRENCH**  
0789 MW 3:00pm-4:30pm Gonzales L Online 5.0  
& 1h 20m / week Gonzales L Online

## Gender & Women's Studies

**GWOS 1 INTRODUCTION TO GENDER AND WOMEN'S STUDIES**  
0240 3h 0m / week Davis D Online 3.0

**GWOS 4 GENDER, SEXUALITY, AND POPULAR CULTURE**  
0814 3h 0m / week Davis D Online 3.0

**GWOS 12 WOMEN IN UNITED STATES HISTORY**  
0158 3h 0m / week Davis D Online 3.0  
0332 3h 0m / week Mullins E Online 3.0  
0731 6h 20m / week Davis D Online 3.0  
(03/29-05/21)  
0800 MW 9:30am-10:45am Mullins E Online 3.0  
4949 3h 0m / week Mullins E Online 3.0

**GWOS 30 GENDER IN GLOBAL PERSPECTIVE**  
0493 3h 0m / week Davis D Online 3.0

**GWOS 40 INTRODUCTION TO FEMINIST THEORY**  
4952 3h 0m / week Davis D Online 3.0

## Gentrain

**GENT 5 THE MEDIEVAL WORLD: PART I (400-1100)**  
0193 4h 15m / week Finell J Online 1.0  
& Haffa Online  
& Madsen Online  
& Spoto S Online  
(02/23-03/18)

**GENT 6 THE MEDIEVAL WORLD: PART II (1100-1350)**  
0194 4h 15m / week Finell J Online 1.0  
& Haffa Online  
& Madsen Online  
& Spoto S Online  
(03/30-04/22)

**GENT 7 THE EARLY RENAISSANCE (1350-1520)**  
0197 4h 15m / week Finell J Online 1.0  
& Haffa Online  
& Madsen Online  
& Spoto S Online  
(04/27-05/20)

**GENT 21 MEDIEVAL AND RENAISSANCE EUROPE (400-1520)**  
0198 4h 15m / week Finell J Online 3.0  
& Haffa Online  
& Madsen Online  
& Spoto S Online  
(02/23-05/20)

**GENT 405 THE MEDIEVAL WORLD: PART I (400-1100)**  
0203 4h 15m / week Finell J Online 0.0  
& Haffa Online  
& Madsen Online  
& Spoto S Online  
(02/23-03/18)

SECTION	DAYS	TIME	INSTRUCTOR	ROOM	UNITS	SECTION	DAYS	TIME	INSTRUCTOR	ROOM	UNITS	SECTION	DAYS	TIME	INSTRUCTOR	ROOM	UNITS
<b>GENT 406 THE MEDIEVAL WORLD: PART II (1100-1350)</b>						<b>GEOL 12L EARTH OCEAN CLIMATE: INTRODUCTION TO EARTH SCIENCE LAB</b>						<b>HIST 8 WORLD HISTORY SINCE 1500</b>					
0207	4h 15m / week		Finell J	Online	0.0	0363	Th	1:30pm-4:20pm	Hochstaedter	Online	1.0	0747	3h 0m / week		Whitney J	Online	3.0
&			Haffa	Online		0374	Th	5:30pm-8:20pm	Hochstaedter	Online	1.0	<b>HIST 12 WOMEN IN UNITED STATES HISTORY</b>					
&			Madsen	Online								0160	3h 0m / week		Davis D	Online	3.0
&			Spoto S	Online								0222	6h 20m / week		Davis D	Online	3.0
(03/30-04/22)												(03/29-05/21)					
<b>GENT 407 THE EARLY RENAISSANCE (1350-1520)</b>												0327 3h 0m / week Mullins E Online 3.0					
0209	4h 15m / week		Finell J	Online	0.0	<b>GLST 2 GLOBAL ISSUES</b>						0801 3h 0m / week Mullins E Online 3.0					
&			Haffa	Online		0231	3h 0m / week		Blanchard L	Online	3.0	4534 3h 0m / week Mullins E Online 3.0					
&			Madsen	Online								<b>HIST 17 UNITED STATES HISTORY TO 1877</b>					
&			Spoto S	Online								0230 3h 0m / week Jeffrey C Online 3.0					
(04/27-05/20)												0395 6h 20m / week Jeffrey C Online 3.0					
												(03/29-05/21)					
												4537 3h 0m / week George G Online 3.0					
												4538 3h 0m / week George G Online 3.0					
												4539 3h 0m / week Jeffrey C Online 3.0					
												<b>HIST 18 UNITED STATES HISTORY FROM 1865</b>					
												0005 3h 0m / week Finell J Online 3.0					
												0292 3h 0m / week Finell J Online 3.0					
												0539 2h 30m / week Esaki K Online 3.0					
												0581 2h 45m / week Whitney J MRNHS 3.0					
												0601 2h 45m / week McCarty J Online 3.0					
												(01/25-06/04/21)					
												0606 2h 45m / week McCarty J Online 3.0					
												(01/25-06/04/21)					
												0611 2h 45m / week McCarty J Online 3.0					
												(01/25-06/04/21)					
												0625 2h 45m / week McCarty J Online 3.0					
												(01/25-06/04/21))					

**Geology**

<b>GEOL 2 PHYSICAL GEOLOGY</b>					
0787	3h 0m / week		Turrini Smith	Online	3.0
4517	3h 0m / week		Turrini Smith	Online	3.0
<b>GEOL 2L PHYSICAL GEOLOGY LABORATORY</b>					
0799	F	12:00pm-2:50pm	Turrini Smith	Online	1.0
0802	F	8:00am-10:50am	Turrini Smith	Online	1.0
<b>GEOL 9 EARTH CATASTROPHES AND DISASTERS</b>					
0007	3h 0m / week		Garcia Garcia	Online	3.0
0382	3h 0m / week		Garcia Garcia	Online	3.0
<b>GEOL 12 EARTH OCEAN CLIMATE: INTRODUCTION TO EARTH SCIENCE</b>					
0361	3h 0m / week		Hochstaedter	Online	3.0
0367	3h 0m / week		Hochstaedter	Online	3.0

**Global Studies**

<b>GLST 2 GLOBAL ISSUES</b>					
0231	3h 0m / week		Blanchard L	Online	3.0

**Health**

<b>HLTH 4 HEALTHY LIVING</b>					
0155	3h 0m / week		Shirley K	Online	3.0
0353	6h 20m / week		Shirley K	Online	3.0
(03/29-05/21)					
4527	3h 0m / week		Shirley K	Online	3.0
<b>HLTH 5 FIRST AID AND CPR</b>					
4528	Th	1:00pm-4:50pm	Parker A	SPS101	3.0
	& Th	1:00pm-4:50pm	Thomas	SPS101	

**History**

<b>HIST 5 WESTERN CIVILIZATION II</b>					
0214	3h 0m / week		Finell J	Online	3.0
<b>HIST 6 HISTORY OF WORLD RELIGIONS</b>					
0600	3h 0m / week		Mullins E	Online	3.0
0826	3h 0m / week		Mullins E	Online	3.0
<b>HIST 7 WORLD HISTORY TO 1500</b>					
0013	3h 0m / week		Finell J	Online	3.0
0512	3h 0m / week		Finell J	Online	3.0

**BE HEARD. HAVE YOUR SAY. MAKE A DIFFERENCE!**

The Associated Students of Monterey Peninsula College (ASMP) are responsible for the coordination and support of student activities and organizations.

Located in the Student Center they:

- Advocate for students' needs
- Provide Student ID cards
- Run the on-campus Food Pantry




Contact Julie Osborne at (831) 646-4192 or email [josborne@mpc.edu](mailto:josborne@mpc.edu)

SECTION	DAYS	TIME	INSTRUCTOR	ROOM	UNITS	SECTION	DAYS	TIME	INSTRUCTOR	ROOM	UNITS	SECTION	DAYS	TIME	INSTRUCTOR	ROOM	UNITS
0626		2h 45m / week (01/25-06/04/21)	Stafford M	Online	3.0	<b>HOSP 61</b>		<b>PROFESSIONAL MEETING PLANNING</b>				<b>HOSP 84</b>		<b>CHOCOLATE I: INTRODUCTION TO CHOCOLATE</b>			
0648		2h 45m / week (01/25-06/04/21)	Stafford M	Online	3.0	0517	M	5:00pm-5:50pm & 2h 10m / week (03/29-05/21)	Jansen M Jansen M	Online Online	1.5	1132		4h 30m / week (04/27-05/23)	Adam A	Online	0.5
0742		3h 0m / week	Whitney J	Online	3.0	<b>HOSP 64</b>		<b>CUSTOMER SERVICE</b>				<b>HOSP 87</b>		<b>BAKESHOP: REGIONAL FRENCH DESSERTS</b>			
1138		2h 30m / week (01/12-06/04)	Esaki, Kai	Online	3.0	0500		6h 20m / week (01/25-03/19)	Jansen M	Online	3.0	0371		6h 5m / week (03/30-04/18)	Adam A	Online	0.5
5107		3h 0m / week	Whitney J	Online	3.0	<b>HOSP 66</b>		<b>HOSPITALITY CAREER READINESS</b>				<b>HOSP 88</b>		<b>CHOCOLATE II: CHOCOLATES AND CONFECTIONS</b>			
<b>HIST 23</b>		<b>CHICANO HISTORY 1848 TO PRESENT</b>				1131		2h 10m / week (03/29-05/21)	Jansen M	Online	1.0	1134		4h 30m / week (04/27-05/23)	Adam A	Online	0.5
0785	TTh	9:30am-10:45am	Serena D	Online	3.0	<b>HOSP 70</b>		<b>HOSPITALITY COST CONTROL</b>				<b>HOSP 440</b>		<b>WINE FUNDAMENTALS</b>			
<b>Hospitality</b>																	
<b>HOSP 23</b>		<b>CULINARY FOUNDATIONS OF PROFESSIONAL COOKING I</b>				0025	W	4:00pm-4:50pm & 5h 20m / week (01/25-03/19)	Jansen M Jansen M	Online Online	3.0	1129		3h 10m / week (01/25-03/15)	Eriksen D	Online	0.0
0514	W	5:00pm-5:50pm & 4h 0m / week	Caughman J Caughman J	Online Online	3.0	<b>HOSP 78</b>		<b>BAKESHOP: BASIC BAKING TECHNIQUES</b>				<b>HOSP 478</b>		<b>BAKESHOP: BASIC BAKING TECHNIQUES</b>			
<b>HOSP 24</b>		<b>CULINARY FOUNDATIONS OF PROFESSIONAL COOKING II</b>				0768		4h 5m / week (02/24-04/26)	Erickson J	Online	1.0	1125		9h 10m / week (01/26-02/12)	Adam A	Online	0.0
0516	M	5:00pm-5:50pm & 4h 0m / week	Caughman J Caughman J	Online Online	3.0	4630		9h 10m / week (01/26-02/21)	Adam A	Online	1.0	<b>HOSP 483</b>		<b>BAKESHOP: FRENCH PASTRIES AND RESTAURANT-STYLE DESSERTS</b>			
<b>HOSP 40</b>		<b>WINE FUNDAMENTALS</b>				<b>HOSP 83</b>		<b>BAKESHOP: FRENCH PASTRIES AND RESTAURANT-STYLE DESSERTS</b>				1127		6h 5m / week (02/23-03/14)	Adam A	Online	0.0
1130		3h 10m / week (01/25-03/15)	Eriksen D	Online	1.5	0370		6h 5m / week (02/23-03/14)	Adam A	Online	0.5	<b>HOSP 484</b>		<b>CHOCOLATE I: INTRODUCTION TO CHOCOLATE</b>			
<b>HOSP 51</b>		<b>INTRODUCTION TO THE HOSPITALITY INDUSTRY</b>				0770		4h 30m / week (01/20-02/12)	Erickson J	Online	0.5	1133		4h 30m / week (04/27-05/23)	Adam A	Online	0.0
0927		6h 20m / week (02/08-04/09)	Jansen M	Online	3.0												

# WE SHOP YOU BAKE!

Dreaming about becoming a baker/pastry chef, or owning a small business?



Enroll in MPC's Non-Credit Baking and Pastry Arts Certificate of Completion. Taught by an experienced Pastry Chef, this low-cost option will provide you the opportunity to develop the knowledge and skills needed to bake sellable products. Courses may be repeated.

[www.mpc.edu/hosp](http://www.mpc.edu/hosp)



SECTION	DAYS	TIME	INSTRUCTOR	ROOM	UNITS	SECTION	DAYS	TIME	INSTRUCTOR	ROOM	UNITS	SECTION	DAYS	TIME	INSTRUCTOR	ROOM	UNITS
<b>HOSP 487 BAKESHOP: REGIONAL FRENCH DESSERTS</b>						<b>KINS 50 ORIENTATION FOR ATHLETES</b>						<b>LETP 145A P.O.S.T. BASIC ACADEMY III</b>					
1128	6h	5m / week	Adam A	Online	0.0	4813	4h	15m / week	Spiering	Online	2.0	1078	41h	5m / week	Vaughn Linda	SNJOSE	4.5
		(03/30-04/18)						(01/25-03/19)						(05/02-05/28)			
<b>HOSP 488 CHOCOLATE II: CHOCOLATES AND CONFECTIONS</b>						<b>KINS 51 FITNESS AND WELLNESS STRATEGIES</b>						<b>LETP 145B P.O.S.T. BASIC ACADEMY MODULAR II</b>					
1135	4h	30m / week	Adam A	Online	0.0	4839	3h	40m / week	Gamble E	Online	2.0	1114	40h	0m / week	Vaughn Linda	SNJOSE	8.0
		(04/27-05/23)						(02/01-04/09)						(02/01-03/19)			
<b>Humanities</b>						<b>KINS 60 FITNESS EXERCISE PHYSIOLOGY</b>						<b>LETP 145C P.O.S.T. BASIC ACADEMY I</b>					
<b>HUMA 10 EXPLORATION OF VALUES IN LIVING</b>						<b>KINS 63 FITNESS ANATOMY AND KINEISIOLOGY</b>						<b>LETP 146 BASIC POLICE REQUALIFICATION COURSE</b>					
4556	3h	0m / week	Eubanks K.	Online	3.0	0755	4h	15m / week	O'Hare	Online	2.0	0472	45h	20m / week	Vaughn Linda	SNJOSE	3.0
								(04/05-05/28)						(04/26-05/14)			
<b>HUMA 40 INTRODUCTION TO FEMINIST THEORY</b>						<b>KINS 92 PRACTICAL EXPERIENCE IN PERSONAL TRAINING</b>						<b>LETP 180 CITIZEN'S ACADEMY</b>					
4558	3h	0m / week	Davis D	Online	3.0	0099	3h	0m / week	Moldenhauer	Online	1.0	0911	5h	5m / week	Vaughn Linda	SNJOSE	1.0
														(03/17-04/14)			
<b>Interdisciplinary Studies</b>						<b>Law Enforcement Training Program</b>						<b>LETP 201 VICE INVESTIGATIONS</b>					
<b>INDS 440 INTRODUCTION TO THE MONTEREY STATE HISTORICAL PARK</b>						<p>For more information on these and other Law Enforcement Training courses, please visit the South Bay Regional Public Safety Training Consortium website at <a href="http://theacademy.ca.gov/">http://theacademy.ca.gov/</a> or call (408) 229-4299.</p>						<b>LETP 202 FINANCIAL CRIMES INVESTIGATION</b>					
1092	8h	40m / week	Mar S	CCLK	0.0							<b>LETP 108 EXPLORER ACADEMY</b>					
<b>Japanese</b>						<b>LETP 130 DEVELOPING A PERSONAL PHILOSOPHY OF LEADERSHIP</b>						<b>LETP 203 ROBBERY INVESTIGATIONS</b>					
<b>JPNS 1A ELEMENTARY JAPANESE I</b>						<b>LETP 132 ORGANIZATIONAL LEADERSHIP</b>						<b>LETP 204 INVESTIGATION CORE</b>					
4569	MW	6:00pm-7:35pm	Ogaki T	Online	5.0	1044	24h	0m / week	Vaughn Linda	SNJOSE	0.5	0542	40h	5m / week	Vaughn Linda	SNJOSE	2.0
		& 1h 10m / week	Ogaki T	Online				& 24h 0m / week	Vaughn Linda	SNJOSE				(05/10-05/21)			
								(03/22-03/24)						(04/19-04/30)			
<b>JPNS 1B ELEMENTARY JAPANESE II</b>						<b>LETP 144A P.O.S.T. INTENSIVE BASIC ACADEMY I</b>						<b>LETP 203 ROBBERY INVESTIGATIONS</b>					
5111	TTh	6:00pm-7:35pm	Ogaki T	Online	5.0	0851	4h	25m / week	Vaughn Linda	SNJOSE	2.5	0609	40h	25m / week	Vaughn Linda	SNJOSE	1.0
		& 1h 10m / week	Ogaki T	Online					Vaughn Linda	SNJOSE	2.5			(03/01-03/05)			
														(05/31-06/04)			
<b>Kinesiology</b>						<b>LETP 144B P.O.S.T. INTENSIVE BASIC ACADEMY II</b>						<b>LETP 204 INVESTIGATION CORE</b>					
<b>KINS 40 INTRODUCTION TO KINESIOLOGY</b>						<b>LETP 144B P.O.S.T. INTENSIVE BASIC ACADEMY II</b>						<b>LETP 204 INVESTIGATION CORE</b>					
0504	3h	0m / week	O'Hare	Online	3.0	0328	30h	5m / week	Vaughn Linda	SNJOSE	12.0	0544	40h	5m / week	Vaughn Linda	SNJOSE	2.0
								(10/19-01/25)						(04/19-04/30)			
<b>KINS 42A ATHLETIC TRAINING FIELD EXPERIENCE I</b>						<b>LETP 144B P.O.S.T. INTENSIVE BASIC ACADEMY II</b>						<b>LETP 204 INVESTIGATION CORE</b>					
4812	6h	0m / week	McCart J	PE120	2.0	0831	34h	35m / week	Vaughn Linda	SNJOSE	12.0	0549	40h	5m / week	Vaughn Linda	SNJOSE	2.0
								(10/20-01/14)						(03/15-03/26)			
<b>KINS 42B ATHLETIC TRAINING FIELD EXPERIENCE II</b>						<b>LETP 144B P.O.S.T. INTENSIVE BASIC ACADEMY II</b>						<b>LETP 204 INVESTIGATION CORE</b>					
0738	6h	0m / week	McCart J	PE120	2.0	0841	37h	30m / week	Vaughn Linda	SNJOSE	12.0	0550	40h	5m / week	Vaughn Linda	SNJOSE	2.0
								(01/11-04/01)						(02/22-03/05)			
<b>KINS 43 THEORY OF COACHING</b>						<b>LETP 144B P.O.S.T. INTENSIVE BASIC ACADEMY II</b>						<b>LETP 204 INVESTIGATION CORE</b>					
0413	3h	0m / week	Spiering	Online	3.0	0336	31h	40m / week	Vaughn Linda	SPS201	12.0	0559	40h	5m / week	Vaughn Linda	SNJOSE	2.0
								(10/29-02/04)						(02/01-02/11)			
<b>KINS 45 INTRODUCTION TO CAREERS IN SPORTS MEDICINE AND ALLIED HEALTH</b>						<b>LETP 144B P.O.S.T. INTENSIVE BASIC ACADEMY II</b>						<b>LETP 204 INVESTIGATION CORE</b>					
0930	3h	0m / week	O'Hare	Online	3.0	0723	34h	0m / week	Vaughn Linda	SNJOSE	12.0	0619	40h	5m / week	Vaughn Linda	SNJOSE	2.0
								(12/07-03/16)						(03/22-04/02)			
<b>KINS 47 PRINCIPLES OF EXERCISE PRESCRIPTION AND PROGRAM DESIGN</b>						<b>LETP 144B P.O.S.T. INTENSIVE BASIC ACADEMY II</b>						<b>LETP 204 INVESTIGATION CORE</b>					
0072	3h	0m / week	McCann S	Online	3.0	0833	36h	30m / week	Vaughn Linda	SNJOSE	12.0	1118	40h	5m / week	Vaughn Linda	SNJOSE	2.0
								(01/26-04/22)						(01/04-01/15)			
<b>KINS 48 PSYCHOLOGY OF FITNESS AND SPORT PERFORMANCE</b>						<b>LETP 144B P.O.S.T. INTENSIVE BASIC ACADEMY II</b>						<b>LETP 204 INVESTIGATION CORE</b>					
0074	3h	0m / week	O'Hare	Online	3.0	1036	MTWThF	8:00am-3:05pm	Vaughn Linda	SNJOSE	12.0						
								(04/01-06/25)									

SECTION	DAYS	TIME	INSTRUCTOR	ROOM	UNITS	SECTION	DAYS	TIME	INSTRUCTOR	ROOM	UNITS	SECTION	DAYS	TIME	INSTRUCTOR	ROOM	UNITS
<b>LETP 205 OFFICER-INVOLVED SHOOTING AND DEATH INVESTIGATION</b>												<b>LETP 232.4 ADVANCED PEACE OFFICER TRAINING: S.W.A.T. UPDATE</b>					
0979		39h 50m / week (04/26-04/30)	Vaughn Linda	SNJOSE	1.0	1116		39h 40m / week (02/01-02/05)	Vaughn Linda	SNJOSE	1.0	0848		2h 15m / week	Vaughn Linda	SNJOSE	1.0
<b>LETP 207 HOMICIDE INVESTIGATION</b>						<b>LETP 224 DRIVER AWARENESS INSTRUCTOR</b>						<b>LETP232.31 ADVANCED PEACE OFFICER TRAINING: ADVANCED S.W.A.T. 40 HOURS</b>					
0560		40h 15m / week (04/05-04/16)	Vaughn Linda	SNJOSE	2.0	1045		32h 45m / week & 32h 45m / week (01/19-01/22)	Vaughn Linda	SPS104	0.5	1098		40h 10m / week (05/03-05/07)	Vaughn Linda	SNJOSE	1.0
0561		40h 15m / week (02/22-03/05)	Vaughn Linda	SNJOSE	2.0	<b>LETP 230 ADVANCED OFFICER COURSE</b>						<b>LETP 233.2 BASIC S.W.A.T. - 80 HOURS</b>					
0622		40h 15m / week (03/01-03/12)	Vaughn Linda	SNJOSE	2.0	0574		MTWThF 8:00am-4:50pm (04/07-04/23)	Vaughn Linda	SNJOSE	3.0	0827		40h 0m / week (01/25-01/29)	Vaughn Linda	SNJOSE	2.0
0623		40h 15m / week (05/31-06/11)	Vaughn Linda	SNJOSE	2.0	0673		25h 25m / week (12/01-01/22)	Vaughn Linda	SNJOSE	3.0	<b>LETP 233.7 DEFENSIVE TACTICS INSTRUCTOR</b>					
0624		40h 15m / week (05/03-05/14)	Vaughn Linda	SNJOSE	2.0	<b>LETP230.11 S.W.A.T.</b>						<b>LETP 233.8 DEFENSIVE TACTICS INSTRUCTOR UPDATE</b>					
1117		40h 15m / week (01/04-01/15)	Vaughn Linda	SNJOSE	2.0	1096		40h 5m / week (04/05-04/16)	Vaughn Linda	SNJOSE	2.0	1099		24h 10m / week (04/12-04/14)	Vaughn Linda	SNJOSE	0.5
<b>LETP 208 CHILD ABUSE INVESTIGATION</b>						<b>LETP231.93 RADAR TRAINING</b>						<b>LETP233.10 TACTICAL OPERATION DISPATCHER</b>					
0566		40h 10m / week (01/25-01/29)	Vaughn Linda	SNJOSE	1.0	1097		24h 45m / week (01/04-01/06)	Vaughn Linda	SNJOSE	0.5	1100		39h 40m / week (06/01-06/04)	Vaughn Linda	SNJOSE	1.0
0627		40h 10m / week (03/22-03/26)	Vaughn Linda	SNJOSE	1.0	<b>LETP231.95 OFFICER SAFETY - FIELD TACTICS</b>						<b>LETP 234 ADVANCED OFFICER SKILLS I</b>					
<b>LETP 209 SEXUAL ASSAULT INVESTIGATION</b>						0603		20h 20m / week (02/08-02/10)	Vaughn Linda	SNJOSE	0.5	0378		24h 0m / week (03/02-03/04)	Vaughn Linda	SNJOSE	0.5
0568		40h 10m / week (05/10-05/14)	Vaughn Linda	SNJOSE	1.0	0604		20h 20m / week (02/03-02/05)	Vaughn Linda	SNJOSE	0.5	0482		WTh 8:00am-4:05pm (02/17-02/18)	Vaughn Linda	SNJOSE	0.5
0570		40h 10m / week (04/05-04/09)	Vaughn Linda	SNJOSE	1.0	0605		20h 20m / week (01/25-01/27)	Vaughn Linda	SNJOSE	0.5	0527		28h 0m / week (04/14-04/16)	Vaughn Linda	SNJOSE	0.5
0573		40h 10m / week (02/22-02/26)	Vaughn Linda	SNJOSE	1.0	<b>LETP 232 ADVANCED PEACE OFFICER TRAINING</b>						<b>LETP 236 ADVANCED OFFICER SKILLS II</b>					
0632		40h 10m / week (01/11-01/15)	Vaughn Linda	SNJOSE	1.0	0377		1h 40m / week (10/17-01/24)	Vaughn Linda	SNJOSE	0.5	1101		40h 15m / week (05/17-05/21)	Vaughn Linda	SNJOSE	1.0
0634		40h 10m / week (02/22-02/26)	Vaughn Linda	SNJOSE	1.0	0427		2h 25m / week (10/31-01/24)	Vaughn Linda	SNJOSE	0.5	<b>LETP 237 FIREARMS INSTRUCTOR</b>					
0635		40h 10m / week (04/26-04/30)	Vaughn Linda	SNJOSE	1.0	0429		2h 10m / week (11/07-01/24)	Vaughn Linda	SNJOSE	0.5	1102		40h 15m / week (04/05-04/09)	Vaughn Linda	SNJOSE	1.0
1119		40h 10m / week (01/11-01/15)	Vaughn Linda	SNJOSE	1.0	0430		32h 0m / week (02/06-02/07)	Vaughn Linda	SNJOSE	0.5	<b>LETP 238 TACTICAL PATROL RIFLE INSTRUCTOR</b>					
<b>LETP 211 HUMAN TRAFFICKING</b>						0431		26h 30m / week (04/12-04/23)	Vaughn Linda	SNJOSE	1.0	1103		40h 15m / week (03/22-03/27)	Vaughn Linda	SNJOSE	1.0
0998		39h 5m / week (01/25-01/29)	Vaughn Linda	SNJOSE	2.0	0434		26h 30m / week (03/06-03/07)	Vaughn Linda	SNJOSE	0.5	<b>LETP240.25 SUPERVISORY UPDATE</b>					
0999		39h 5m / week (04/19-04/23)	Vaughn Linda	SNJOSE	2.0	0435		24h 0m / week (03/10-03/12)	Vaughn Linda	SNJOSE	0.5	0749		20h 5m / week (01/05-01/07)	Vaughn Linda	SNJOSE	0.5
<b>LETP 213 PUBLIC INFORMATION OFFICER</b>						0467		26h 30m / week (02/15-02/16)	Vaughn Linda	SNJOSE	0.5	<b>LETP240.47 DRUG TRAFFIC INTERDICTION</b>					
1079		24h 15m / week (05/03-05/05)	Vaughn Linda	SNJOSE	0.5	0468		24h 0m / week (03/16-03/18)	Vaughn Linda	SNJOSE	0.5	1104		23h 50m / week (06/01-06/03)	Vaughn Linda	SNJOSE	0.5
<b>LETP 223 DRIVER TRAINING INSTRUCTOR</b>						0526		24h 0m / week (04/06-04/08)	Vaughn Linda	SNJOSE	0.5	<b>LETP 241 COMMUNITY SERVICE OFFICER</b>					
1043		39h 40m / week & 39h 40m / week	Vaughn Linda	SPS104	1.0	0551		1h 30m / week	Vaughn Linda	SNJOSE	0.5	1105		43h 20m / week (02/01-03/12)	Vaughn Linda	SNJOSE	9.0
			Vaughn Linda	SPS104		0562		5h 15m / week (04/06-05/04)	Vaughn Linda	SNJOSE	0.5	<b>LETP 242 PEACE OFFICER ASSOCIATION TRAINING</b>					
						0565		1h 45m / week (02/04-05/05)	Vaughn Linda	SNJOSE	0.5	0636		32h 0m / week (12/29-01/22)	Vaughn Linda	SNJOSE	2.5
												0692		34h 35m / week (04/23-05/28)	Vaughn Linda	SNJOSE	5.0



SECTION	DAYS	TIME	INSTRUCTOR	ROOM	UNITS	SECTION	DAYS	TIME	INSTRUCTOR	ROOM	UNITS	SECTION	DAYS	TIME	INSTRUCTOR	ROOM	UNITS	
0980		32h 50m / week (04/13-05/28)	Vaughn Linda	SNJOSE	5.5	0835		40h 20m / week (12/28-03/25)	Vaughn Linda	SNJOSE	14.5			(03/22-04/02)				
<b>LETP 245 FIELD TRAINING PROGRAM</b>						0843		40h 20m / week (12/03-02/23)	Vaughn Linda	SNJOSE	14.5	0859		40h 0m / week (04/05-04/16)	Vaughn Linda	SNJOSE	2.0	
0794	MTWThF	8:00am-11:50am & MTWThF 1:00pm-4:50pm (10/02-01/08)	Vaughn Linda	SNJOSE	13.0	0883	MTWThF	8:00am-5:00pm	Vaughn Linda	SNJOSE	14.5	1121		39h 50m / week (01/25-02/05)	Vaughn Linda	SNJOSE	2.0	
0830		40h 5m / week	Vaughn Linda	SNJOSE	17.0	0884		27h 20m / week	Vaughn Linda	SNJOSE	10.0	<b>LETP 280.2 FIELD TRAINING OFFICER</b>						
<b>LETP 246 INTERMEDIATE FIELD TRAINING</b>						0891		40h 20m / week (01/11-04/17)	Vaughn Linda	SNJOSE	14.5	0828		40h 0m / week (02/01-02/05)	Vaughn Linda	SNJOSE	1.0	
1106		34h 0m / week (02/01-03/12)	Vaughn Linda	SNJOSE	4.0	<b>LETP 255 PUBLIC SAFETY DISPATCH</b>						0839		40h 0m / week (12/28-01/01)	Vaughn Linda	SNJOSE	1.0	
<b>LETP 247 ADVANCED FIELD TRAINING</b>						0687		17h 15m / week (11/10-12/29)	Vaughn Linda	SNJOSE	3.0	0840		40h 0m / week (03/01-03/05)	Vaughn Linda	SNJOSE	1.0	
1107		34h 0m / week (02/01-03/12)	Vaughn Linda	SNJOSE	4.0	0861		40h 15m / week (04/12-04/30)	Vaughn Linda	SNJOSE	3.0	0863		40h 0m / week (04/05-04/09)	Vaughn Linda	SNJOSE	1.0	
<b>LETP 248 SURVEILLANCE TECHNIQUES</b>						1111		40h 15m / week (03/29-04/16)	Vaughn Linda	SNJOSE	3.0	<b>LETP 280.3 FIELD TRAINING OFFICER UPDATE</b>						
1108		36h 5m / week (03/01-03/05)	Vaughn Linda	SNJOSE	1.0	<b>LETP 265 DIGNITARY ESCORT</b>						1113		24h 10m / week (05/03-05/05)	Vaughn Linda	SNJOSE	0.5	
<b>LETP 249 PUBLIC SAFETY DISPATCH ACADEMY</b>						1112		40h 10m / week (05/03-05/07)	Vaughn Linda	SNJOSE	1.0	<b>LETP 290 INSTRUCTOR DEVELOPMENT</b>						
1109		40h 10m / week (03/29-04/16)	Vaughn Linda	SNJOSE	3.5	<b>LETP 280.1 SUPERVISOR COURSE</b>						0031		40h 0m / week (05/17-05/21)	Vaughn Linda	SNJOSE	1.0	
<b>LETP 250 ARREST AND CONTROL/DRIVING (PSP)</b>						0421	MTWThF	8:00am-4:50pm	Vaughn Linda	SNJOSE	2.0	0422	MTWTh	7:00am-5:10pm	Vaughn Linda	SNJOSE	1.0	
1110		23h 15m / week (03/29-04/01)	Vaughn Linda	SNJOSE	0.5	0424	MTWThF	8:00am-4:50pm	Vaughn Linda	SNJOSE	2.0	0442		40h 0m / week (04/12-04/16)	Vaughn Linda	SNJOSE	1.0	
<b>LETP 254 DISPATCH FIELD TRAINING PROGRAM</b>						0838		40h 0m / week (04/12-04/23)	Vaughn Linda	SNJOSE	2.0	0523		40h 0m / week (03/08-03/12)	Vaughn Linda	SNJOSE	1.0	
0705		35h 40m / week	Vaughn Linda	SNJOSE	13.0	0856		40h 0m / week (05/10-05/21)	Vaughn Linda	SNJOSE	2.0							
0714		40h 20m / week (12/30-03/29)	Vaughn Linda	SNJOSE	14.5	0857		40h 0m / week	Vaughn Linda	SNJOSE	2.0							

# HEY MPC STUDENTS RIDE THE MST BUS FOR FREE!



Jump on the bus and go anywhere they go!

Show your current student I.D for unlimited access

- Check the bus schedule for the most current times on the MST website or app

SECTION	DAYS	TIME	INSTRUCTOR	ROOM	UNITS	SECTION	DAYS	TIME	INSTRUCTOR	ROOM	UNITS	SECTION	DAYS	TIME	INSTRUCTOR	ROOM	UNITS
---------	------	------	------------	------	-------	---------	------	------	------------	------	-------	---------	------	------	------------	------	-------

**ARC** ACCESS RESOURCE CENTER

**Access Resource Center offers:**

- Academic Accommodations
- Testing Accommodations
- Counseling
- High Tech Center
- Learning Skills Classes

**CONTACT:** [arcinfo@mpc.edu](mailto:arcinfo@mpc.edu) • (831) 646-4070 • [www.mpc.edu/arc](http://www.mpc.edu/arc)

4718	30h 0m / week	Jaros R	NBI	0.0
	(Early Spring Course - 01/04-01/22)			
4719	20h 0m / week	Jaros R	NBI	0.0

## Library Services

### LIBR 50 INTRODUCTION TO LIBRARY AND RESEARCH SKILLS

0014	3h 0m / week	Easton	Online	1.0
0016	3h 0m / week	Easton	Online	1.0
0017	3h 0m / week	Tozier G	Online	1.0
0419	3h 0m / week	Thomas E	Online	1.0
0465	3h 0m / week	Duong	Online	1.0
0818	3h 0m / week	Duong	Online	1.0
0902	6h 20m / week	Tozier G	Online	1.0
	(03/29-05/21)			

## Linguistics

### LING 10 FOUNDATIONS OF LANGUAGE

0411	4h 0m / week	Abend	Online	3.0
------	--------------	-------	--------	-----

### LING 15 INTRODUCTION TO LINGUISTICS

0364	3h 0m / week	Abend	Online	3.0
------	--------------	-------	--------	-----

### LING 25 INTRODUCTION TO LANGUAGE AND GENDER

4013	3h 0m / week	Abend	Online	3.0
------	--------------	-------	--------	-----

### LING 45 INTRODUCTION TO LANGUAGE AND SOCIETY

0473	3h 0m / week	Abend	Online	3.0
------	--------------	-------	--------	-----

### LING 46 INTRODUCTION TO THE PSYCHOLOGY OF LANGUAGE

0937	3h 0m / week	Abend	Online	3.0
------	--------------	-------	--------	-----

## Mathematics

January 25, 2021 - May 27, 2021

The Math Learning Center offers free, drop-in tutoring to all MPC students taking a math class below Calculus. Visit us online for the support you need in math!

Books and calculators also available for check-out!

For additional information, call (831) 645-1330 or email [mlc@mpc.edu](mailto:mlc@mpc.edu)

## Learning Skills

### LNSK 320 INTRODUCTORY COMPUTER SKILLS LAB

4701	3h 0m / week	Copeland A	Online	1.0
------	--------------	------------	--------	-----

### LNSK 325 ASSISTIVE TECHNOLOGY APPLICATIONS

4702	3h 50m / week	Copeland A	Online	1.0
	(02/22-05/28)			

### LNSK 330 LEARNING STYLES EXPLORATION

4704	0h 25m / week	Lewis V	STS115	0.5
------	---------------	---------	--------	-----

### LNSK 331A LEARNING STRATEGIES LAB

0607	3h 0m / week	Copeland A	Online	1.0
------	--------------	------------	--------	-----

### LNSK 331B READING SKILLS DEVELOPMENT LAB

4705	Th 9:00am-10:15am	Rozman	Online	1.0
	& 1h 25m / week	Rozman	Online	

### LNSK 331C WRITING STRATEGIES LAB

4708	W 11:00am-12:15pm	Rozman	Online	1.0
	& 1h 25m / week	Rozman	Online	

### LNSK 332 READING SKILLS DEVELOPMENT

4713	T 9:30am-10:20am	Rozman	Online	2.0
	& 1h 0m / week	Rozman	Online	

### LNSK 333 WRITING SKILLS DEVELOPMENT

4714	M 11:00am-12:15pm	Rozman	Online	2.0
	& 0h 25m / week	Rozman	Online	

### LNSK 341A BEGINNING READING STRATEGIES LAB

0672	TTh 12:30pm-2:20pm	Rozman	Online	1.0
	(02/23-05/27)			

### LNSK 341B INTERMEDIATE READING STRATEGIES LAB

0675	TTh 12:30pm-2:20pm	Rozman	Online	1.0
	(02/23-05/27)			

### LNSK 342A BEGINNING WRITING STRATEGIES LAB

0680	W 12:30pm-1:45pm	Rozman	Online	1.0
	& 1h 25m / week	Rozman	Online	

### LNSK 342B INTERMEDIATE WRITING STRATEGIES LAB

0684	W 12:30pm-1:45pm	Rozman	Online	1.0
	& 1h 25m / week	Rozman	Online	

### LNSK 343A BEGINNING MATH STRATEGIES LAB

1001	3h 0m / week	Copeland A	Online	1.0
------	--------------	------------	--------	-----

### LNSK 343B INTERMEDIATE MATH STRATEGIES LAB

0900	3h 0m / week	Copeland A	Online	1.0
------	--------------	------------	--------	-----

### LNSK 347A BEGINNING ASSISTIVE TECHNOLOGY PROJECTS

4703	3h 0m / week	Copeland A	Online	1.0
------	--------------	------------	--------	-----

### LNSK 410 JOB READINESS

0415	30h 0m / week	Phillips SA	HOPE	0.0
	(Early Spring Course - 01/04-01/22)			
4717	20h 0m / week	Phillips SA	HOPE	0.0

### MATH 10 MATHEMATICS FOR GENERAL EDUCATION

0172	4h 0m / week	Little W	Online	4.0
0797	TTh 1:00pm-2:50pm	Phillely G	Online	4.0
0852	TTh 6:00pm-7:50pm	Phillely G	Online	4.0
4636	4h 0m / week	Little W	Online	4.0

SECTION	DAYS	TIME	INSTRUCTOR	ROOM	UNITS	SECTION	DAYS	TIME	INSTRUCTOR	ROOM	UNITS	SECTION	DAYS	TIME	INSTRUCTOR	ROOM	UNITS						
<b>MATH 12 NUMBER SYSTEMS</b>						0862	TTh	11:00am-12:50pm	Iwamoto L	Online	4.0	4650	5h 0m / week		Cristobal	Online	4.0						
0912	MW	5:30pm-6:20pm & 2h 0m / week	Washburn Washburn	Online Online	4.0	0864	TTh	9:00am-10:50am	Pickering	Online	4.0	4651	TTh	1:30pm-2:45pm & 2h 0m / week	Lopez D Lopez D	Online Online	4.0						
<b>MATH 13 PRE-CALCULUS</b>						0866	5h 15m / week (02/22-05/28)		Cristobal	Online	4.0	<b>MATH 20B CALCULUS WITH ANALYTIC GEOMETRY II</b>											
0018	TTh	9:00am-9:50am & 3h 0m / week	Catania Catania	Online Online	5.0	0877	4h 0m / week		Lopez D	Online	4.0	0044	MTWThF	9:00am-9:50am	Hsu J.	Online	4.0						
0397	5h 0m / week		Bishop E	Online	5.0	4641	MW	1:00pm-2:50pm	Pickering	Online	4.0	4653	MTTh	11:00am-11:50am & 2h 0m / week	Catania Catania	Online Online	4.0						
0404	6h 30m / week (02/22-05/26)		Northup C	Online	5.0	4644	TTh	3:00pm-4:50pm	Iwamoto L	Online	4.0	5122	TTh	6:00pm-8:15pm	Lake E	Online	4.0						
0417	5h 0m / week		Catania	Online	5.0	4645	TTh	1:00pm-2:50pm	Hsu J.	Online	4.0	<b>MATH 20C CALCULUS OF SEVERAL VARIABLES</b>											
4640	MW	12:30pm-1:20pm & 3h 0m / week	Washburn Washburn	Online Online	5.0	4646	MW	1:00pm-2:50pm	Bartow	Online	4.0	4654	5h 0m / week		Cristobal	Online	4.0						
5120	5h 0m / week		Bishop E	Online	5.0	4648	4h 0m / week		Spence L	Online	4.0	<b>MATH 31 LINEAR ALGEBRA</b>											
<b>MATH 16 ELEMENTARY STATISTICS</b>						<b>MATH 17 FINITE MATHEMATICS</b>						<b>MATH 32 DIFFERENTIAL EQUATIONS</b>											
0026	MW	9:00am-10:50am	Hebert C	Online	4.0	4649	MW	3:00pm-4:50pm	Hsu J.	Online	4.0	4655	4h 0m / week		Cristobal	Online	4.0						
0173	4h 0m / week		Spence L	Online	4.0	<b>MATH 18 CALCULUS AND ANALYTIC GEOMETRY FOR BIOLOGY/SOC SCI/BUSINESS</b>						<b>MATH 40 DISCRETE MATHEMATICS</b>											
0181	4h 0m / week		Millan S	Online	4.0	0868	4h 0m / week		Washburn	Online	4.0	4656	Th	9:00am-9:50am & 3h 0m / week	Spence L Spence L	Online Online	3.0						
0446	5h 15m / week (02/22-05/28)		Tran D	Online	4.0	0872	TTh	3:00pm-3:50pm & 2h 0m / week	Washburn Washburn	Online Online	4.0	<b>MATH 260 PRE-STATISTICS</b>											
0454	4h 0m / week		Acevedo-Arre	Online	4.0	<b>MATH 20A CALCULUS WITH ANALYTIC GEOMETRY I</b>						<b>MATH 261 BEGINNING ALGEBRA</b>											
0458	MW	6:00pm-7:50pm	Shingleton J	Online	4.0	0185	MW	11:00am-1:15pm	Iwamoto L	Online	4.0	0060	TTh	1:30pm-3:45pm	Hebert C	Online	5.0						
0459	TTh	6:00pm-7:50pm	Shingleton J	Online	4.0	0308	TThF	8:00am-8:50am & 2h 0m / week	Hebert C Hebert C	Online Online	4.0	<b>MATH 261 BEGINNING ALGEBRA</b>											
0628	MW	9:00am-10:50am	Nodzinski P	Online	4.0	0679	4h 5m / week		Lopez D	Online	4.0	0440	5h 0m / week		Catania	Online	5.0						
0678	3h 15m / week		Lew-Roca L	Online	4.0	0711	4h 5m / week		Riordan E	Online	4.0	4661	5h 0m / week		Acevedo-Arre	Online	5.0						
0817	4h 0m / week		Lopez D	Online	4.0																		

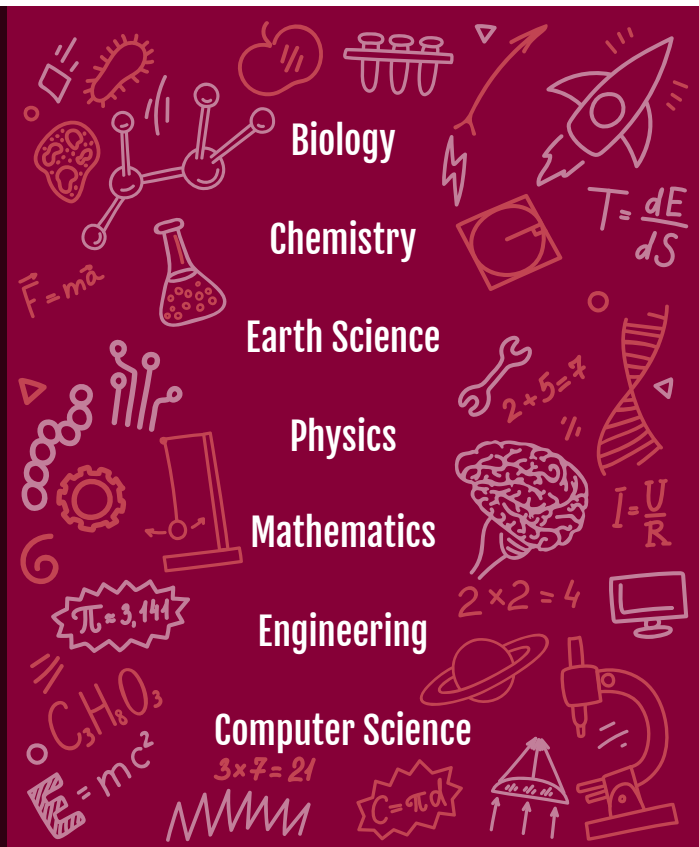
# STEM

Science  
Technology  
Engineering  
Mathematics

STEM majors at MPC provide a solid foundation for transfer to a 4-year university and rewarding careers.

A wide variety of high paying and exciting career opportunities are possible after graduation:

- |                                      |                             |
|--------------------------------------|-----------------------------|
| Engineer                             | Astronaut                   |
| Actuary                              | Forensic Science Technician |
| Physicist                            | Software Developer          |
| Statistician                         | Geoscientist                |
| Information Technologist             | STEM Teacher/Professor      |
| Applied Mathematician                | Cartographer                |
| Aviation Management                  | Chemist                     |
| Computer Information Systems Manager | Biochemist                  |
| Biotechnologist                      | Mathematician               |
| Doctor                               | Architect                   |
| Materials Scientist                  | Nurse                       |
|                                      | And many more!              |



SECTION	DAYS	TIME	INSTRUCTOR	ROOM	UNITS	SECTION	DAYS	TIME	INSTRUCTOR	ROOM	UNITS	SECTION	DAYS	TIME	INSTRUCTOR	ROOM	UNITS						
<b>MATH 263 INTERMEDIATE ALGEBRA AND COORDINATE GEOMETRY</b>																							
0134	5h	0m / week	Bishop E	Online	5.0																		
0183	TTh	8:30am-10:45am	Nguyen T	Online	5.0																		
4672	5h	0m / week	Nguyen T	Online	5.0																		
4676	5h	0m / week	Brophy N	Online	5.0																		
4678	10h	35m / week (03/29-05/21)	Bishop E	Online	5.0																		
<b>MATH 313 SUPPORT FOR PRE-CALCULUS</b>																							
0387	TTh	10:00am-10:50am	Catania	Online	2.0																		
0443	2h	0m / week	Washburn	Online	2.0																		
<b>MATH 316 SUPPORT FOR ELEMENTARY STATISTICS</b>																							
0460	F	9:00am-10:50am	Hebert C	Online	2.0																		
0474	MW	10:00am-10:50am	Lopez D	Online	2.0																		
0479	TTh	12:00pm-12:50pm	Hsu J.	Online	2.0																		
<b>MATH 317 SUPPORT FOR FINITE MATHEMATICS</b>																							
0480	MW	2:00pm-2:50pm	Hsu J.	Online	2.0																		
<b>MATH 318 SUPPORT FOR CALCULUS AND ANALYTIC GEOMETRY (BIOL/SOCSCI/BUSI)</b>																							
0901	2h	0m / week	Washburn	Online	2.0																		
<b>MATH 440 SUPERVISED TUTORING: MATHEMATICS</b>																							
4691	18h	0m / week	Lake E	TBD	0.0																		

## Medical Assisting

<b>MEDA 100 INTRODUCTION TO HEALTH CAREERS</b>																							
4692	1h	45m / week (03/29-05/28)	Gensel G	Online	1.0																		
4693	1h	45m / week (01/25-03/31)	Gensel G	Online	1.0																		
<b>MEDA 101 ETHICS, LAW AND IT SECURITY IN THE MEDICAL OFFICE</b>																							
0008	3h	0m / week & 3h 0m / week	Gensel G Singh D	Online	3.0																		
<b>MEDA 105 MEDICAL TERMINOLOGY</b>																							
0009	MW	12:30pm-2:20pm	Gensel G	Online	4.0																		
0682	4h	0m / week	Bell M	Online	4.0																		
<b>MEDA 110 MEDICAL OFFICE MANAGEMENT</b>																							
0950	TTh	1:30pm-3:45pm	Gensel G	Online	3.0																		
<b>MEDA 112 MEDICAL OFFICE COMPUTER APPLICATIONS</b>																							
0032	4h	0m / week	Bell M	Online	2.0																		
<b>MEDA 113 MEDICAL PROCEDURE CODING</b>																							
0908	5h	0m / week	Carlson S	Online	3.0																		
<b>MEDA 114 MEDICAL INSURANCE MANAGEMENT</b>																							
0034	3h	0m / week	Bell M	Online	2.0																		

## MEDA 116 MEDICAL LINGUISTICS AND TRANSCRIPTION

0924 4h 0m / week Gensel G Online 2.0

## MEDA 117 ICD 10 CODING

0508 5h 0m / week Carlson S Online 3.0

## MEDA 118 PHARMACOLOGY AND HUMAN DISEASES

4698 3h 0m / week Bell M Online 3.0

## MEDA 120 MEDICAL ASSISTING CLINICAL TECHNIQUES I

*Sections below offered at the Marina Education Center*

0036 T 10:30am-12:45pm Bell M Online 3.0

& T 1:30pm-2:20pm Bell M MT2

& 1h 25m / week Bell M Online

0935 T 10:30am-12:45pm Bell M Online 3.0

& T 3:00pm-3:50pm Bell M MT2

& 1h 25m / week Bell M Online

## MEDA 121 MEDICAL ASSISTING CLINICAL TECHNIQUES II

*Sections below offered at the Marina Education Center*

1006 M 10:30am-12:45pm Bell M Online 3.0

& W 3:00pm-3:50pm Bell M MT2

& 1h 25m / week Bell M Online

4699 M 10:30am-12:45pm Bell M Online 3.0

& W 1:30pm-2:20pm Bell M MT2

& 1h 25m / week Bell M Online

## MEDA 122 MEDICAL ASSISTING CLINICAL TECHNIQUES III

*Sections below offered at the Marina Education Center*

0037 M 1:30pm-3:45pm Bell M Online 3.0

& Th 10:30am-11:20am Bell M MT2

& 1h 25m / week Bell M Online

1007 M 1:30pm-3:20pm Bell M Online 3.0

& Th 1:00pm-1:50pm Bell M MT2

& 1h 25m / week Bell M Online

## MEDA 130 MEDICAL ASSISTING EXTERNSHIP

0991 9h 25m / week Bell M OFFICE 3.0

4700 22h 25m / week Bell M OFFICE 3.0

(03/29-05/21)

## MEDA 251 COMMUNITY HEALTH WORKER LEVEL 1

0540 F 10:30am-12:45pm Bell M Online 3.0

& 2h 25m / week

## Music - Commercial

### MUSC 14A RECORDING ARTS I

4726 TTh 1:00pm-2:15pm Bryant Online 3.0

& 2h 0m / week Bryant Online

### MUSC 14B RECORDING ARTS II

4727 TTh 1:00pm-2:15pm Bryant Online 3.0

& 2h 0m / week Bryant Online



# LAUNCH YOUR Health Career at MPC

Programs offered for essential healthcare workers in:

- Community Health Worker
- Dental Assisting
- Medical Assisting
- Medical Insurance and Coding
- Medical Office Administration

*Instruction combines online and in-person instruction*

Looking for an "in demand" profession in Health Care? MPC Medical Assisting graduates are in demand with area employers. Get started on your new career this spring. **Enroll in MPC Medical Assisting program today.**

Visit [www.mpc.edu/meda](http://www.mpc.edu/meda) to learn more.

SECTION	DAYS	TIME	INSTRUCTOR	ROOM	UNITS	SECTION	DAYS	TIME	INSTRUCTOR	ROOM	UNITS	SECTION	DAYS	TIME	INSTRUCTOR	ROOM	UNITS
---------	------	------	------------	------	-------	---------	------	------	------------	------	-------	---------	------	------	------------	------	-------

## Music

<b>MUSI 1</b>	<b>MUSIC APPRECIATION</b>				
4721	3h 0m / week	Durst A	Online	3.0	
<b>MUSI 2</b>	<b>INTRODUCTION TO BROADWAY MUSICALS</b>				
0587	3h 0m / week	Durst A	Online	3.0	
<b>MUSI 3</b>	<b>INTRODUCTION TO JAZZ AND POP</b>				
0525	3h 0m / week	Durst A	Online	3.0	
<b>MUSI 10A</b>	<b>MUSIC THEORY AND MUSICIANSHIP I</b>				
4722	MW 9:00am-10:15am & 2h 0m / week	Durst A Durst A	Online	4.0	
<b>MUSI 10B</b>	<b>MUSIC THEORY AND MUSICIANSHIP II</b>				
1063	MW 10:30am-11:45am & 2h 0m / week	Durst A Durst A	Online	4.0	
<b>MUSI 25</b>	<b>APPLIED MUSIC</b>				
0340	M 3:00pm-4:05pm & 1h 10m / week (02/08-05/28)	Durst A Durst A	Online	0.5	
<b>MUSI 40</b>	<b>VOICE FUNDAMENTALS</b>				
4731	TTh 2:00pm-2:50pm	Edison K	Online	1.0	
<b>MUSI 41</b>	<b>VOICE FUNDAMENTALS II</b>				
1064	TTh 3:00pm-3:50pm	Edison K	Online	1.0	
<b>MUSI 48A</b>	<b>BEGINNING/INTERMEDIATE GUITAR</b>				
5132	T 6:30pm-7:45pm & 1h 25m / week	Collins P Collins P	Online	1.0	
<b>MUSI 48B</b>	<b>STRING GUITAR - INTERMEDIATE</b>				
5133	T 6:30pm-7:45pm & 1h 25m / week	Collins P Collins P	Online	1.0	
<b>MUSI 50A</b>	<b>BEGINNING PIANO I</b>				
0589	Th 11:00am-11:50am & 1h 0m / week	Durst A Durst A	Online	1.0	
<b>MUSI 50B</b>	<b>BEGINNING PIANO II</b>				
0236	Th 11:00am-11:50am & 1h 0m / week	Durst A Durst A	Online	1.0	
<b>MUSI 50C</b>	<b>INTERMEDIATE PIANO</b>				
0241	Th 11:00am-11:50am & 1h 0m / week	Durst A Durst A	Online	1.0	
<b>MUSI 50D</b>	<b>ADVANCED PIANO</b>				
0244	Th 11:00am-11:50am & 1h 0m / week	Durst A Durst A	Online	1.0	
<b>MUSI 495</b>	<b>SPECIAL TOPICS IN MUSIC</b>				
0359	T 2:00pm-2:50pm & 1h 0m / week	Edison K Edison K	Online	0.0	
0360	T 6:30pm-7:20pm & 1h 0m / week	Collins P Collins P	Online	0.0	



## Arts, Literature, Personal Enrichment

For-credit courses leading to certificate, degree, or personal enrichment

- Fitness
- Literature
- Philosophy
- Studio Arts
- Theatre Arts
- Recreation
- Creative Writing
- Science
- Music
- World Languages

**Older Adult Program** provides free, non-credit classes that are designed to meet the interests and lifestyle of older adults across the Monterey Peninsula.

- Art
- Literature
- Music
- Ornamental Horticulture
- Creative Writing
- Gentrain
- World Civilization

Classes offered online this Spring!

## Nursing

<b>NURS 52B</b>	<b>NURSING II</b>				
4739	MT 9:00am-10:50am & 13h 25m / week	Kragelund Kragelund	Online	8.5	NU105
<b>NURS 52D</b>	<b>NURSING IV</b>				
4740	MT 9:00am-11:50am & 13h 25m / week	Rondez C Rondez C	Online	9.5	NU105
<b>NURS 100</b>	<b>PHARMACOLOGY FOR NURSING</b>				
4741	F 9:00am-11:50am	Trapl C	Online	2.0	
<b>NURS 150</b>	<b>NURSING PROGRAM READINESS</b>				
0715	2h 25m / week	Hanna	Online	1.5	
0823	2h 25m / week	Hanna	Online	1.5	

<b>NURS 180B</b>	<b>BEGINNING PROFESSIONAL SKILLS DEVELOPMENT</b>				
0124	3h 0m / week	Hanna	Online	1.0	
<b>NURS 180D</b>	<b>ADVANCED PROFESSIONAL SKILLS DEVELOPMENT</b>				
0125	3h 0m / week	Hanna	Online	1.0	
<b>NURS 205</b>	<b>SUPERVISED NURSING SKILLS LAB II</b>				
4745	6h 0m / week	Rondez C	Online	2.0	
4746	12h 0m / week	Rondez C	Online	4.0	
<b>NURS 207</b>	<b>SUPERVISED NURSING SKILLS LAB IV</b>				
0317	6h 0m / week	Rondez C	Online	2.0	
0320	12h 0m / week	Rondez C	Online	4.0	
0617	1h 25m / week	Rondez C	Online	0.5	

# Explore the Science of Health & Wellness

- NUTF 1 Nutrition
- NUTF 2 Intro to Careers in Nutrition, Dietetics, & Food
- NUTF 3 Nutrition Issues & Controversies
- NUTF 10 Food Science



## NUTRITION DEPARTMENT MONTEREY PENINSULA COLLEGE

### Nutrition And Food

#### NUTF 1 NUTRITION

0115	3h 0m / week	Lord V	Online	3.0
0464	6h 20m / week (03/29-05/21)	Lord V	Online	3.0
0543	3h 0m / week	Lord V	Online	3.0
4526	3h 0m / week	Lord V	Online	3.0

#### NUTF 2 INTRODUCTION TO CAREERS IN NUTRITION, DIETETICS, AND FOOD

0466	1h 0m / week	Lord V	Online	1.0
------	--------------	--------	--------	-----

#### NUTF 3 NUTRITION ISSUES AND CONTROVERSIES

0575	2h 0m / week	Lord V	Online	2.0
------	--------------	--------	--------	-----

#### NUTF 10 FOOD SCIENCE

0970	2h 0m / week	Lord V	Online	2.0
------	--------------	--------	--------	-----

#### NUTF 10L FOOD SCIENCE AND SAFETY LABORATORY

0971	T 4:00pm-4:50pm & 2h 0m / week	Lord V	Online	1.0
------	-----------------------------------	--------	--------	-----

### Oceanography

#### OCEN 2 INTRODUCTORY OCEANOGRAPHY

4754	3h 0m / week	Hochstaedter	Online	3.0
5137	3h 0m / week	Hochstaedter	Online	3.0

#### OCEN 2L INTRODUCTORY OCEANOGRAPHY LAB

4755	W 11:00am-1:50pm	Hochstaedter	Online	1.0
4756	W 8:00am-10:50am	Hochstaedter	Online	1.0

### Older Adult Program

#### ART 431 DRAWING AND COMPOSITION

4955	5h 35m / week (02/23-04/29)	Bispo	Online	0.0
------	--------------------------------	-------	--------	-----

#### ORNH 425 SUCCESSFUL GARDENING TECHNIQUES

4961	TF 10:00am-10:50am & 1h 40m / week (02/23-04/30)	Hofmann J Hofmann J	Online	0.0
------	--	------------------------	--------	-----

### Ornamental Horticulture

#### ORNH 52 INTRODUCTION TO ORNAMENTAL HORTICULTURE II

1023	W 6:00pm-8:50pm & 1h 0m / week	Grych M Grych M	Online	3.0
------	-----------------------------------	--------------------	--------	-----

#### ORNH 64 GROWING AND USING CALIFORNIA NATIVE PLANTS

1019	M 6:00pm-8:50pm & 1h 0m / week	Grych M Grych M	Online	3.0
------	-----------------------------------	--------------------	--------	-----

#### ORNH 65 BASIC LANDSCAPE DESIGN

1020	T 6:00pm-8:50pm & 1h 0m / week	Quintanilla Quintanilla	Online	3.0
------	-----------------------------------	----------------------------	--------	-----

#### ORNH 202 BEGINNING PRUNING

0121	Sat 9:00am-11:50am & Sat 1:00pm-3:05pm (05/01-05/08)	Quintanilla Quintanilla	Online OUTDOOR	0.5
------	--	----------------------------	-------------------	-----

#### ORNH 210 CURRENT TOPICS IN ORNAMENTAL HORTICULTURE: Firescaping - Horticulture in Fire Country

1026	Sat 9:00am-11:15am & Sat 1:00pm-2:30pm (04/17-04/24)	Kern J Kern J	Online Online	0.5
------	--	------------------	------------------	-----

### Personal Development

#### PERS 10 INTRODUCTION TO COLLEGE SUCCESS

0571	2h 10m / week (01/25-03/19)	De Soto A	Online	1.0
------	--------------------------------	-----------	--------	-----

0992	MTWThF 9:00am-10:25am (Early Spring Course - 01/04-01/15)	Fasheh J	Online	1.0
------	--	----------	--------	-----

#### PERS 50 MAKING COLLEGE COUNT

0295	F 9:00am-11:50am	Stratton J	Online	3.0
0909	6h 20m / week (03/29-05/21)	De Soto A	Online	3.0

#### PERS 59 STUDY SKILLS FOR SUCCESS

0771	MW 2:30pm-4:05pm (02/08-03/10)	Ballard	Online	1.0
------	-----------------------------------	---------	--------	-----

#### PERS 71 FOUNDATIONS OF CAREER CHOICE

0090	W 1:00pm-2:50pm (01/27-03/17)	Gonzalez E.	Online	1.0
0910	1h 35m / week (02/08-04/24)	Mann A	Online	1.0

SECTION	DAYS	TIME	INSTRUCTOR	ROOM	UNITS	SECTION	DAYS	TIME	INSTRUCTOR	ROOM	UNITS	SECTION	DAYS	TIME	INSTRUCTOR	ROOM	UNITS
<b>Philosophy</b>																	
<b>PHIL 2 INTRODUCTION TO PHILOSOPHY</b>																	
0447		12h 40m / week	Provost	Online	3.0												
		(Early Spring Course - 01/04-01/22)															
1072		3h 0m / week	Weber T	Online	3.0												
4765	MW	9:30am-10:45am	Weber T	Online	3.0												
<b>PHIL 4 MORAL ISSUES</b>																	
0981		3h 0m / week	Weber T	Online	3.0												
4766	MW	11:00am-12:15pm	Weber T	Online	3.0												
<b>PHIL 6 INTRODUCTION TO LOGIC</b>																	
0245	TTh	12:30pm-1:45pm	Weber T	Online	3.0												
<b>PHIL 8 INTRODUCTION TO WORLD RELIGIONS</b>																	
0490		12h 40m / week	Provost	Online	3.0												
		(Early Spring Course - 01/04-01/22)															
<b>PHIL 10 INTRODUCTION TO CRITICAL THINKING</b>																	
0478		12h 40m / week	Provost	Online	3.0												
		(Early Spring Course - 01/04-01/22)															
4771		3h 0m / week	Provost	Online	3.0												
<b>PHIL 40 INTRODUCTION TO FEMINIST THEORY</b>																	
4774		3h 0m / week	Davis D	Online	3.0												
<b>Physical Education</b>																	
<b>PHED 2A GOLF I</b>																	
0003	T	9:30am-12:20pm	Russo J	BHB	1.0												
<b>PHED 2B GOLF II</b>																	
4783	Th	9:30am-12:20pm	Russo J	BHB	1.0												
<b>PHED 2C GOLF III</b>																	
4784	Th	9:30am-12:20pm	Russo J	BHB	1.0												
<b>PHED 2D GOLF IV</b>																	
0734	Th	9:30am-12:20pm	Russo J	BHB	1.0												
<b>PHED 5A TENNIS I</b>																	
0643	TTh	11:00am-12:15pm	Tran	T CTS	1.0												
<b>PHED 5B TENNIS II</b>																	
0644	TTh	11:00am-12:15pm	Tran	T CTS	1.0												
<b>PHED 5D TENNIS III</b>																	
0784	TTh	11:00am-12:15pm	Tran	T CTS	1.0												
<b>PHED 5E TENNIS IV</b>																	
0786	TTh	11:00am-12:15pm	Tran	T CTS	1.0												
<b>PHED 7A SWIMMING I</b>																	
4787	MTWTh	9:30am-10:20am	Osgood S	POOL	1.0												
		& MTWTh 9:30am-10:20am	Smith A	POOL													
<b>PHED 7B SWIMMING II</b>																	
4788	MTWTh	9:30am-10:20am	Osgood S	POOL	1.0												
		& MTWTh 9:30am-10:20am	Smith A	POOL													
<b>PHED 9A PICKLEBALL I</b>																	
0339	TTh	9:30am-10:45am	Tran	T CTS	1.0												
<b>PHED 9B PICKLEBALL II</b>																	
0346	TTh	9:30am-10:45am	Tran	T CTS	1.0												
<b>PHED 9C PICKLEBALL III</b>																	
0164	TTh	9:30am-10:45am	Tran	T CTS	1.0												
<b>PHED 12B COMPETITIVE SWIMMING I</b>																	
4789	MTWTh	12:30pm-1:20pm	Osgood S	POOL	1.0												
		& MTWTh 12:30pm-1:20pm	Smith A	POOL													
<b>PHED 12C COMPETITIVE SWIMMING II</b>																	
0646	MTWTh	12:30pm-1:20pm	Osgood S	POOL	1.0												
		& MTWTh 12:30pm-1:20pm	Smith A	POOL													
<b>PHED 12D COMPETITIVE SWIMMING III</b>																	
0808	MTWTh	12:30pm-1:20pm	Osgood S	POOL	1.0												
		& MTWTh 12:30pm-1:20pm	Smith A	POOL													
<b>PHED 12E COMPETITIVE SWIMMING IV</b>																	
0811	MTWTh	12:30pm-1:20pm	Osgood S	POOL	1.0												
		& MTWTh 12:30pm-1:20pm	Smith A	POOL													
<b>PHED 15A VOLLEYBALL I</b>																	
0647		4h 0m / week	Moore K	Online	1.0												
<b>PHED 15B VOLLEYBALL II</b>																	
5151		4h 0m / week	Moore K	Online	1.0												
<b>PHED 15D VOLLEYBALL III</b>																	
0736		4h 0m / week	Moore K	Online	1.0												
<b>PHED 15E VOLLEYBALL IV</b>																	
0737		4h 0m / week	Moore K	Online	1.0												
<b>PHED 22A INTRODUCTION TO BASKETBALL</b>																	
0343		3h 0m / week	Spiering	Online	1.0												
<b>PHED 22B INTERMEDIATE BASKETBALL</b>																	
0352		3h 0m / week	Spiering	Online	1.0												
<b>PHED 22C INTERMEDIATE/ADVANCED BASKETBALL</b>																	
0791		3h 0m / week	Spiering	Online	1.0												
<b>PHED 22D ADVANCED BASKETBALL</b>																	
0926		3h 0m / week	Spiering	Online	1.0												



The MPC Athletic Program is proudly supported by the Lobos Booster Club!

MPC offers intercollegiate sports with more than 225 student athletes participating each year.

- baseball
- basketball
- cross country
- football
- golf
- softball
- tennis
- volleyball
- soccer
- track and field

The Lobos Booster Club provides resources for critical program costs that cannot be covered by State or College funding, include equipment, uniforms, competition fees, and travel costs, and more

Annual Booster Club memberships start as low as \$100 and include free admission to all home sporting events, invitations to Booster Club events, and more!

Visit [www.mpcfoundation.org/booster](http://www.mpcfoundation.org/booster) to learn more or join the Lobos Booster Club today.

SECTION	DAYS	TIME	INSTRUCTOR	ROOM	UNITS	SECTION	DAYS	TIME	INSTRUCTOR	ROOM	UNITS	SECTION	DAYS	TIME	INSTRUCTOR	ROOM	UNITS
<b>Physical Fitness</b>																	
<b>PFIT 2 CORE FITNESS TRAINING</b>																	
0394	3h 0m / week		Moore K	Online	1.0												
1032	3h 0m / week		Staff	Online	1.0												
<b>PFIT 6 CROSS-TRAINING</b>																	
0401	3h 0m / week		Villagrana M	Online	1.0												
<b>PFIT 7 DISTANCE TRAINING</b>																	
0409	3h 0m / week		Carroll M	Online	1.0												
<b>PFIT 8 AEROBIC CONDITIONING</b>																	
0410	3h 0m / week		Phillips D	Online	1.0												
1033	3h 0m / week		Staff	Online	1.0												
<b>PFIT 9 PERSONAL FITNESS</b>																	
0412	3h 0m / week		Spiering	Online	1.0												
1037	3h 0m / week		Staff	Online	1.0												
<b>PFIT 10A BEGINNING WEIGHT TRAINING</b>																	
0083	6h 20m / week		Staff	Online	0.5												
			(Early Spring Course - 01/04-01/22)														
0385	3h 0m / week		Palmer R	Online	1.0												
<b>PFIT 10B INTERMEDIATE WEIGHT TRAINING</b>																	
0389	3h 0m / week		Palmer R	Online	1.0												
0754	6h 20m / week		Staff	Online	0.5												
			(Early Spring Course - 01/04-01/22)														
<b>PFIT 10C ADVANCED WEIGHT TRAINING</b>																	
0393	3h 0m / week		Palmer R	Online	1.0												
<b>PFIT 14 EXERCISE FOR HEALTH AND FITNESS</b>																	
4817	6h 20m / week		Staff	Online	0.5												
			(Early Spring Course - 01/04-01/22)														
<b>PFIT 16A TAI CHI I</b>																	
4820	TTh	9:30am-10:45am	Scott-Behren	Online	1.0												
<b>PFIT 16B TAI CHI II</b>																	
0638	TTh	9:30am-10:45am	Scott-Behren	Online	1.0												
<b>PFIT 16C TAI CHI III</b>																	
0669	TTh	9:30am-10:45am	Scott-Behren	Online	1.0												
<b>PFIT 16D TAI CHI IV</b>																	
0670	TTh	9:30am-10:45am	Scott-Behren	Online	1.0												
<b>PFIT 17A YOGA I</b>																	
4822	MWF	7:00am-7:50am	Fujii K	Online	1.0												
4823	MWF	8:00am-8:50am	Benavente	Online	1.0												
4824	3h 0m / week		Smith A	Online	1.0												
<b>PFIT 17B YOGA II</b>																	
0200	3h 0m / week		Smith A	Online	1.0												
0210	MWF	7:00am-7:50am	Fujii K	Online	1.0												
0211	MWF	8:00am-8:50am	Benavente	Online	1.0												
<b>PFIT 17C YOGA III</b>																	
0760	3h 0m / week		Smith A	Online	1.0												
0762	MWF	7:00am-7:50am	Fujii K	Online	1.0												
0763	MWF	8:00am-8:50am	Benavente	Online	1.0												
<b>PFIT 17D YOGA IV</b>																	
0058	MWF	7:00am-7:50am	Fujii K	Online	1.0												
0063	MWF	8:00am-8:50am	Benavente	Online	1.0												
0064	3h 0m / week		Smith A	Online	1.0												
<b>PFIT 18A AEROBIC FITNESS I</b>																	
4825	MWF	8:00am-8:50am	Fujii K	Online	1.0												
5155	MW	5:00pm-6:15pm	Benavente	Online	1.0												
<b>PFIT 18B AEROBIC FITNESS II</b>																	
0227	MWF	8:00am-8:50am	Fujii K	Online	1.0												
0229	MW	5:00pm-6:15pm	Benavente	Online	1.0												
<b>PFIT 18C AEROBIC FITNESS III</b>																	
0765	MWF	8:00am-8:50am	Fujii K	Online	1.0												
0767	MW	5:30pm-6:45pm	Benavente	Online	1.0												
<b>PFIT 18D AEROBIC FITNESS IV</b>																	
0067	MWF	8:00am-8:50am	Fujii K	Online	1.0												
0325	MW	5:00pm-6:15pm	Benavente	Online	1.0												
<b>PFIT 19A BODY SCULPTING I</b>																	
4830	3h 0m / week		Moldenhauer	Online	1.0												
<b>PFIT 19B BODY SCULPTING II</b>																	
0640	3h 0m / week		Moldenhauer	Online	1.0												
<b>PFIT 19C BODY SCULPTING III</b>																	
0730	3h 0m / week		Moldenhauer	Online	1.0												
<b>PFIT 19D BODY SCULPTING IV</b>																	
0925	3h 0m / week		Moldenhauer	Online	1.0												

# HEALTHY BODY HEALTHY MIND

Keep toned and work out at home with one of our numerous *online* classes!

Collegiate Athletics, Dance, Fitness, Physical Education & Weight Training

- Athletic Conditioning & Training
- Modern Dance, Ballet, Jazz, Ethnic Dance
- Golf, Basketball, Volleyball
- Fitness Training, Weight Training, Tai Chi, Yoga, Aerobics





SECTION	DAYS	TIME	INSTRUCTOR	ROOM	UNITS	SECTION	DAYS	TIME	INSTRUCTOR	ROOM	UNITS	SECTION	DAYS	TIME	INSTRUCTOR	ROOM	UNITS							
<b>PFIT 20 CIRCUIT TRAINING</b>																								
0414		3h 0m / week	Staff	Online	1.0																			
<b>PFIT 21A FLEXIBILITY AND RELAXATION TECHNIQUES I</b>																								
4832		3h 0m / week	Carroll M	Online	1.0																			
<b>PFIT 21B FLEXIBILITY AND RELAXATION TECHNIQUES II</b>																								
0234		3h 0m / week	Carroll M	Online	1.0																			
<b>PFIT 21C FLEXIBILITY AND RELAXATION TECHNIQUES III</b>																								
0396		3h 0m / week	Carroll M	Online	1.0																			
<b>PFIT 22A FITNESS THROUGH SWIMMING I</b>																								
0045	MTWTh	6:00am-6:50am	Osgood S	POOL	1.0																			
	& MTWTh	6:00am-6:50am	Smith A	POOL																				
4833	MTWTh	11:00am-11:50am	Osgood S	POOL	1.0																			
	& MTWTh	11:00am-11:50am	Smith A	POOL																				
<b>PFIT 22B FITNESS THROUGH SWIMMING II</b>																								
0046	MTWTh	6:00am-6:50am	Osgood S	POOL	1.0																			
	& MTWTh	6:00am-6:50am	Smith A	POOL																				
0641	MTWTh	11:00am-11:50am	Osgood S	POOL	1.0																			
	& MTWTh	11:00am-11:50am	Smith A	POOL																				
<b>PFIT 22C FITNESS THROUGH SWIMMING III</b>																								
0051	MTWTh	6:00am-6:50am	Osgood S	POOL	1.0																			
	& MTWTh	6:00am-6:50am	Smith A	POOL																				
0086	MTWTh	11:00am-11:50am	Osgood S	POOL	1.0																			
	& MTWTh	11:00am-11:50am	Smith A	POOL																				
<b>PFIT 22D FITNESS THROUGH SWIMMING IV</b>																								
0052	MTWTh	6:00am-6:50am	Osgood S	POOL	1.0																			
	& MTWTh	6:00am-6:50am	Smith A	POOL																				
0087	MTWTh	11:00am-11:50am	Osgood S	POOL	1.0																			
	& MTWTh	11:00am-11:50am	Smith A	POOL																				
<b>PFIT 30A TRIATHLON TRAINING I</b>																								
4836	MW	8:00am-8:50am	Osgood S	POOL	1.0																			
	& W	6:00pm-7:50pm	Osgood S	TRACK																				
<b>PFIT 30B TRIATHLON TRAINING II</b>																								
0642	MW	8:00am-8:50am	Osgood S	POOL	1.0																			
	& W	6:00pm-7:50pm	Osgood S	TRACK																				
<b>PFIT 30C TRIATHLON TRAINING III</b>																								
0461	MW	8:00am-8:50am	Osgood S	POOL	1.0																			
	& W	6:00pm-7:50pm	Osgood S	TRACK																				
<b>PFIT 50 INDEPENDENT FITNESS AND TESTING PROGRAM</b>																								
0398		3h 0m / week	Staff	Online	1.0																			
<b>Physics</b>																								
<b>PHYS 2B GENERAL PHYSICS II</b>																								
4851	T	9:30am-10:45am	Jewell L	Online	4.0																			
	& Th	9:30am-12:20pm	Jewell L	Online																				
	& 2h	25m / week	Jewell L	Online																				
<b>PHYS 3A SCIENCE AND ENGINEERING PHYSICS I</b>																								
0167	M	10:00am-10:50am	Jewell L	Online	4.0																			
	& W	2:00pm-4:50pm	Jewell L	Online																				
	& 3h	0m / week	Jewell L	Online																				
4852	M	10:00am-10:50am	Jewell L	Online	4.0																			
	& T	1:00pm-3:50pm	Jewell L	Online																				
	& 3h	0m / week	Jewell L	Online																				
<b>PHYS 3B SCIENCE AND ENGINEERING PHYSICS II</b>																								
0069	4h	0m / week	Wei	Online	4.0																			
	& M	2:00pm-4:50pm	Wei	Online																				
<b>PHYS 3C SCIENCE AND ENGINEERING PHYSICS III</b>																								
4854	4h	0m / week	Wei	Online	4.0																			
	& F	2:00pm-4:50pm	Wei	Online																				
<b>PHYS 12 INTEGRATED PHYSICS AND CHEMISTRY</b>																								
0812	3h	0m / week	Wei	Online	4.0																			
	& W	9:30am-12:20pm	Wei	Online																				
<b>Physiology</b>																								
<b>PHSO 1 HUMAN PHYSIOLOGY</b>																								
1008	MW	12:30pm-1:45pm	Ambaw A	Online	3.0																			
1010	3h	0m / week	Ambaw A	Online	3.0																			
4856	MW	12:30pm-1:45pm	Ambaw A	Online	3.0																			
<b>PHSO 2 HUMAN PHYSIOLOGY LAB</b>																								
0837	T	6:00pm-8:50pm	Patel R	Online	2.0																			
	& 3h	0m / week	Patel R	Online																				
1013	W	9:30am-12:20pm	Ambaw A	Online	2.0																			
	& 3h	0m / week	Ambaw A	Online																				
1014	W	2:00pm-4:50pm	Patel R	Online	2.0																			
	& 3h	0m / week	Patel R	Online																				
4857	M	9:30am-12:20pm	Ambaw A	Online	2.0																			
	& 3h	0m / week	Ambaw A	Online																				
4858	M	2:00pm-4:50pm	Ambaw A	Online	2.0																			
	& 3h	0m / week	Ambaw A	Online																				
5162	W	6:00pm-8:50pm	Patel R	Online	2.0																			
	& 3h	0m / week	Patel R	Online																				
<b>Political Science</b>																								
<b>POLS 1 INTRODUCTION TO AMERICAN GOVERNMENT AND POLITICS</b>																								
0019	3h	0m / week	Van Zwaluwen	Online	3.0																			
0212	3h	0m / week	Blanchard L	Online	3.0																			
0399	3h	0m / week	Staff	Online	3.0																			
4859	3h	0m / week	Banks	Online	3.0																			
4860	3h	0m / week	Banks	Online	3.0																			
4861	3h	0m / week	Banks	Online	3.0																			
4864	3h	0m / week	Blanchard L	Online	3.0																			
4865	3h	0m / week	Van Zwaluwen	Online	3.0																			
4866	6h	20m / week	Van Zwaluwen	Online	3.0																			
		(03/29-05/21)																						
5163	3h	0m / week	Serena D	Online	3.0																			
<b>POLS 2 INTRODUCTION TO COMPARATIVE GOVERNMENT AND POLITICS</b>																								
0756	3h	0m / week	Blanchard L	Online	3.0																			
<b>POLS 3 INTRODUCTION TO POLITICAL THEORY AND THOUGHT</b>																								
0541	T	11:00am-12:15pm	Blanchard L	Online	3.0																			
	& 1h	25m / week	Blanchard L	Online																				
<b>POLS 7 INTRODUCTION TO POLITICAL SCIENCE RESEARCH METHODS</b>																								
0021	3h	0m / week	Blanchard L	Online	3.0																			
<b>POLS 18 LATINOS IN AMERICAN GOVERNMENT</b>																								
0488	W	5:30pm-6:45pm	Martinez L	Online	3.0																			
	& 1h	25m / week	Martinez L	Online																				
<b>Psychology</b>																								
<b>PSYC 1 GENERAL PSYCHOLOGY</b>																								
0329	6h	20m / week	Nicolaides C	Online	3.0																			
		(03/29-05/21)																						
0532	3h	0m / week	Kotecki A	Online	3.0																			
0654	3h	0m / week	Kotecki A	Online	3.0																			
4872	3h	0m / week	Lachman L	Online	3.0																			
4873	3h	0m / week	Kotecki A	Online	3.0																			
4874	3h	0m / week	Lachman L	Online	3.0																			
4875	3h	0m / week	Austin T	Online	3.0																			
4876	6h	20m / week	Nicolaides C	Online	3.0																			
		(01/25-03/19)																						
4877	3h	0m / week	Szechter L	Online	3.0																			
<b>PSYC 3 INTRODUCTION TO SOCIAL PSYCHOLOGY</b>																								
0029	3h	0m / week	Austin T	Online	3.0																			
0776	3h	0m / week	Whitworth R	Online	3.0																			
0832	3h	0m / week	Austin T	Online	3.0																			
<b>PSYC 6 PSYCHOLOGY OF WOMEN</b>																								
0658	3h	0m / week	Cortes A	Online	3.0																			
0885	3h	0m / week	Luke J	Online	3.0																			

**MPC** | FOUNDATION  
MONTEREY PENINSULA COLLEGE

# EVERYONE DESERVES THE OPPORTUNITY TO ATTEND COLLEGE



The MPC Foundation provides opportunities for local students to attend college, and helps ensure their experience is the best it can be.

With generous contributions from our donors and business partners, we support MPC students through scholarships, textbook and emergency assistance, and our signature College Incentive Program (CIP). Since 2015, CIP has helped more than 330 local youth who otherwise may never have attended college to enroll full-time at MPC.

*Invest in the power of education!*  
mpcfoundation.org

<b>PSYC 10 INTRODUCTION TO RESEARCH METHODS IN PSYCHOLOGY</b>				
0286	3h 0m / week	Nicolaides C	Online	3.0
0895	3h 0m / week	Nicolaides C	Online	3.0
<b>PSYC 19 INTRODUCTION TO STATISTICS FOR THE SOCIAL SCIENCES</b>				
0220	4h 0m / week	Nicolaides C	Online	4.0
<b>PSYC 25 LIFESPAN DEVELOPMENT</b>				
0208	3h 0m / week	Szechter L	Online	3.0
0213	6h 20m / week (03/29-05/21)	Whitworth R	Online	3.0
4878	6h 20m / week (01/25-03/19)	Whitworth R	Online	3.0
4880	3h 0m / week	Nicolaides C	Online	3.0
4881	3h 0m / week	Nicolaides C	Online	3.0
4882	3h 0m / week	Szechter L	Online	3.0

<b>PSYC 35 INTRODUCTION TO ABNORMAL PSYCHOLOGY</b>				
0535	3h 0m / week	Whitworth R	Online	3.0
0779	3h 0m / week	Whitworth R	Online	3.0
5168	T 6:30pm-9:20pm	Triplett R	Online	3.0
<b>PSYC 38 BIOLOGICAL PSYCHOLOGY</b>				
0238	3h 0m / week	Kotecki A	Online	3.0
0491	3h 0m / week	Kotecki A	Online	3.0
0536	3h 0m / week	Kotecki A	Online	3.0
<b>PSYC 40 HUMAN SEXUALITY</b>				
0042	3h 0m / week	Luke J	Online	3.0
1068	6h 20m / week (03/29-05/21)	Luke J	Online	3.0
<b>PSYC 50 HEALTH PSYCHOLOGY</b>				
4886	3h 0m / week	Lachman L	Online	3.0

<b>Real Estate</b>				
<b>REAL 51 REAL ESTATE PRACTICE</b>				
4887	TTh 6:00pm-9:10pm (01/26-03/18)	Jones Becky	Online	3.0
<b>REAL 52 LEGAL ASPECTS OF REAL ESTATE</b>				
0137	6h 20m / week (01/25-03/17)	DeMaria K	Online	3.0
<b>REAL 53 REAL ESTATE FINANCE</b>				
0138	6h 20m / week (03/29-05/19)	Barrie B	Online	3.0

SECTION	DAYS	TIME	INSTRUCTOR	ROOM	UNITS	SECTION	DAYS	TIME	INSTRUCTOR	ROOM	UNITS	SECTION	DAYS	TIME	INSTRUCTOR	ROOM	UNITS
<b>Sociology</b>						<b>SOCI 19 INTRODUCTION TO STATISTICS FOR THE SOCIAL SCIENCES</b>						<b>SPAN 1B ELEMENTARY SPANISH II</b>					
<b>SOCI 1 INTRODUCTION TO SOCIOLOGY</b>						0221	4h 0m / week		Nicolaides C	Online	4.0	0300	MW	6:00pm-7:30pm & 1h 20m / week	Staff	Online	5.0
0283	3h 0m / week		Cortes A	Online	3.0	<b>SOCI 22 ASIAN AMERICANS AND PACIFIC ISLANDERS IN AMERICAN SOCIETY</b>						4903	MW	11:00am-12:30pm & 1h 20m / week	Lizano S	Online	5.0
0284	TTh	2:00pm-3:15pm	Villarreal A	Online	3.0	0580	2h 45m / week		Arreola L	Online	3.0	5177	TTh	9:00am-10:30am & 1h 20m / week	Staff	Online	5.0
0390	MW	9:30am-10:45am	Villarreal A	Online	3.0	0757	6h 20m / week (03/29-05/21)		Cabrera V	Online	3.0	<b>SPAN 1SA ELEMENTARY SPANISH FOR SPANISH SPEAKERS I</b>					
0655	Th	6:30pm-9:20pm	Chap M	Online	3.0	<b>SOCI 40 SOCIOLOGY OF MARRIAGES AND FAMILIES</b>						0249	MW	11:00am-12:30pm & 1h 20m / week	Borja F	Online	5.0
<b>SOCI 2 CONTEMPORARY SOCIAL PROBLEMS</b>						4897	W	9:30am-10:45am & 1h 25m / week	Zaleha B	Online	3.0	0503	6h 30m / week (02/16-05/21)	Pico Renteri	Online	5.0	
0330	MW	11:00am-12:15pm	Villarreal A	Online	3.0	<b>Spanish</b>						0916	5h 0m / week		Cisneros S	Online	5.0
<b>SOCI 3 INTRODUCTION TO SOCIAL PSYCHOLOGY</b>						<b>SPAN 1A ELEMENTARY SPANISH I</b>						0932	5h 0m / week		Kamimura H	Online	5.0
0041	3h 0m / week		Austin T	Online	3.0	4899	MW	9:00am-10:30am & 1h 20m / week	Kamimura H	Online	5.0	<b>SPAN 1SB ELEMENTARY SPANISH FOR SPANISH SPEAKERS II</b>					
0778	3h 0m / week		Whitworth R	Online	3.0	4900	TTh	11:00am-12:30pm & 1h 20m / week	Lizano S	Online	5.0	0252	5h 0m / week		Hernandez Ri	Online	5.0
0834	TTh	12:30pm-1:45pm	Austin T	Online	3.0	4901	TTh	1:00pm-2:30pm & 1h 20m / week	Hernandez Ri	Online	5.0	0710	5h 0m / week		Cisneros S	Online	5.0
<b>SOCI 14 SOCIOLOGY OF LATINOS AND LATINAS</b>						5174	MW	6:00pm-7:30pm & 1h 20m / week	Del Pozo J	Online	5.0	0917	MW	9:00am-10:30am & 1h 20m / week	Borja F	Online	5.0
0285	TTh	11:00am-12:15pm	Villarreal A	Online	3.0	5175	TTh	6:00pm-7:30pm & 1h 20m / week	Pico Renteri	Online	5.0	<b>SPAN 2A INTERMEDIATE SPANISH I</b>					
<b>SOCI 15 INTRODUCTION TO RESEARCH METHODS</b>						<b>SPAN 1A ELEMENTARY SPANISH I</b>						4904	TTh	6:00pm-7:30pm & 1h 20m / week	Del Pozo J	Online	5.0
0400	TTh	9:30am-10:45am	Villarreal A	Online	3.0	<b>SPAN 1A ELEMENTARY SPANISH I</b>											
<b>SOCI 17 INTRODUCTION TO CRIME AND DEVIANCE</b>						<b>SPAN 1A ELEMENTARY SPANISH I</b>											
0216	TTh	12:30pm-1:45pm	McNamara M	Online	3.0	<b>SPAN 1A ELEMENTARY SPANISH I</b>											

**LEARN SPANISH**

There are 47% Spanish-speaking households in Monterey County. (Monterey County Health Department), and Spanish is the fastest-growing language in California. Would you like to join 400 million people who speak the language? Enroll in Spanish 1A or Spanish 1SA (if you are a heritage speaker). These courses introduce you to an ability to listen, speak, read, and write in Spanish, and it starts you on a path to a Certificate of Achievement or Associate degree. Enroll today!

Contact Francisco De Borja  
fdorsch@mpc.edu



**MPC ESPAÑOL**

**Certificates of Achievement**



**MEJORAR TU ESPAÑOL**

Hay un 47% de hogares de habla hispana en el condado de Monterey, según el Departamento de Salud del Condado de Monterey. El español es el idioma de más rápido crecimiento en California. ¿Le gustaría unirse a 400 millones de personas que hablan el idioma? Inscríbese en Español 1A o Español 1SA (si es un hablante de herencia). Estos cursos le presentan la posibilidad de escuchar, hablar, leer y escribir en español correctamente y es el comienzo para conseguir un Certificado de Logro o un título de Asociado. ¡Inscríbese hoy!

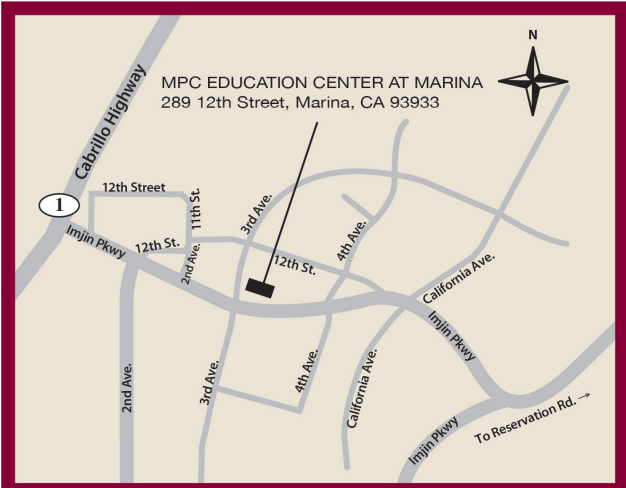
SECTION	DAYS	TIME	INSTRUCTOR	ROOM	UNITS	SECTION	DAYS	TIME	INSTRUCTOR	ROOM	UNITS	SECTION	DAYS	TIME	INSTRUCTOR	ROOM	UNITS
<b>SPAN 2B INTERMEDIATE SPANISH II</b>						<b>SPCH 3 INTERPERSONAL COMMUNICATION</b>						<b>THEA 440 REHEARSAL AND PERFORMANCE</b>					
0079	MW	6:00pm-7:30pm	Lizano S	Online	5.0	0497		3h 0m / week	Cardinale M	Online	3.0	0281		12h 40m / week	Schweickhard	TBD	0.0
	&	1h 20m / week	Lizano S	Online		5182	W	6:30pm-9:20pm	Triplett R	Online	3.0			(03/29-05/23)			
<b>SPAN 2SA INTERMEDIATE SPANISH FOR SPANISH SPEAKERS I</b>						<b>SPCH 4 INTERCULTURAL COMMUNICATION</b>						4943 12h 40m / week Eck T TBD 0.0 (01/25-03/21)					
0923		5h 0m / week	Staff	Online	5.0	5183		3h 0m / week	Sturt	Online	3.0	<b>World Civilization</b>					
<b>SPAN 2SB INTERMEDIATE SPANISH FOR SPANISH SPEAKERS II</b>						<b>SPCH 10 INTRODUCTION TO COMMUNICATION THEORY</b>						See GENTRAIN					
0928		5h 0m / week	Borja F	Online	5.0	0080		3h 0m / week	Sturt	Online	3.0	<b>World Languages</b>					
<b>Speech Communication</b>						<b>Theatre Arts</b>						The following languages are offered this term. For class information, please find them by alphabetical order throughout this Schedule of Classes.					
<b>SPCH 1 PUBLIC SPEAKING</b>						<b>THEA 1 INTRODUCTION TO THEATRE</b>						<b>WRLD 4B THE ROMAN EMPIRE (14 - 600 CE)</b>					
0111	MW	2:00pm-3:15pm	May M	Online	3.0	4917		3h 0m / week	Eck T	Online	3.0	0187		4h 15m / week	Finell J	Online	1.0
0171		3h 0m / week	Genauer R	Online	3.0									& 4h 15m / week	Haffa	Online	
0439		12h 40m / week	Sturt	Online	3.0									& 4h 15m / week	Madsen	Online	
		(Early Spring Course - 01/04-01/22)												(01/26-02/18)	Spoto S	Online	
0521		3h 0m / week	Genauer R	Online	3.0												
0683		2h 45m / week	Staff	Online	3.0												
0689	MTh	11:25am-12:55pm	Baumback J	Online	3.0												
0704		2h 45m / week	Baumback J	Online	3.0												
0822	MTWThF	9:00am-12:10pm	May M	Online	3.0												
		(Early Spring Course - 01/04-01/22)															
0889		3h 0m / week	Osburg	Online	3.0												
0938		3h 0m / week	Sturt	Online	3.0												
1011	MTWThF	4:00pm-7:10pm	Staff	Online	3.0												
		(Early Spring Course - 01/04-01/22)															
1012		12h 40m / week	Sturt	Online	3.0												
		(Early Spring Course - 01/04-01/22)															
4905	MW	9:30am-10:45am	May M	Online	3.0												
4907		3h 0m / week	Genauer R	Online	3.0												
4909	TTh	2:00pm-3:15pm	Baumback J	Online	3.0												
5180		3h 0m / week	Cardinale M	Online	3.0												
<b>SPCH 2 SMALL GROUP COMMUNICATION</b>						<b>THEA 7A WRITING FOR THE THEATRE I</b>						<b>WRLD 404B THE ROMAN EMPIRE (14 TO 600 CE)</b>					
0082		3h 0m / week	Cardinale M	Online	3.0	0011		3h 0m / week	Eck T	Online	3.0	0202		4h 15m / week	Finell J	Online	0.0
0147		3h 0m / week	Sturt	Online	3.0									& 4h 15m / week	Haffa	Online	
0456		3h 0m / week	Sturt	Online	3.0									& 4h 15m / week	Madsen	Online	
4911		3h 0m / week	Cardinale M	Online	3.0									& 4h 15m / week	Spoto S	Online	
4913		3h 0m / week	Cardinale M	Online	3.0									(01/26-02/18)			
<b>THEA 16A ACTING FOR THE CAMERA I</b>						<b>THEA 16B ACTING FOR THE CAMERA II</b>						<b>AMERICAN SIGN LANGUAGE</b>					
1059		4h 5m / week	Welch A	Online	3.0	1061	TTh	10:00am-10:50am	Eck T	Online	3.0	<b>FRENCH</b>					
1060	TTh	10:00am-10:50am	Eck T	Online	3.0							<b>JAPANESE</b>					
		& 3h 0m / week	Eck T	Online								<b>SPANISH</b>					
<b>THEA 40D MAIN STAGE PRODUCTION - ORIGINAL/EXPERIMENTAL</b>						<b>THEA 60A STUDIO THEATRE - COMEDY</b>											
0189		19h 10m / week	Eck T	TBD	3.0	0024		19h 10m / week	Schweickhard	TBD	3.0						
		(01/25-03/21)															

# MPC | EDUCATION CENTER AT MARINA MONTEREY PENINSULA COLLEGE



Conveniently located for residents of Northwestern Monterey County, MPC’s Education Center at Marina offers a variety of courses for transfer, career technical education, and personal enrichment. The Marina Education Center offers a variety of support resources and services to support your academic success.

Go to [mpc.edu/marina](http://mpc.edu/marina) to learn more!



Please visit [www.mpc.edu/schedule](http://www.mpc.edu/schedule) for the most up-to-date list of classes

MARINA / SEASIDE CAMPUS LOCATIONS	MA MPC Education Center at Marina 289 12th Street, Marina	SPS MPC Public Safety Training Center 2642 Colonel Durham Street, Seaside
<b>OFF – CAMPUS LOCATIONS</b>		
<b>AP</b> Ariel Theatrical 320 Main Street, Salinas <b>BHB</b> Bayonet and Black Horse Golf Course 1 McClure Way, Seaside <b>BPH</b> Bay Park Hotel 1425 Munras Ave., Monterey <b>BSFB</b> Big Sur Volunteer Fire Brigade Pfeiffer Ridge Rd., Big Sur <b>CCLK</b> Central Coast Lighthouse Keepers Pt. Sur State Park, Big Sur <b>CFPD</b> Cachagua Fire Protection District 37200 Nason Rd., Carmel Valley <b>CHS</b> Carmel High School 3600 Ocean Ave., Carmel <b>CLINIC</b> Health Facility Clinic See Program Coordinator <b>HFD</b> Hanford Fire Department 350 West Grangeville Blvd., Hanford	<b>HOPE</b> Hope Building 1663 Catalina St., Sand City <b>HVMS</b> Hidden Valley Music Seminars 88 West Carmel Valley Road, Carmel Valley <b>MCFB</b> Mid Coast Fire Brigade 38841 Palo Colorado Rd., Carmel <b>MCRFPD</b> Monterey County Regional Fire Protection District 19900 Portola Dr., Salinas <b>MFD</b> Monterey Fire Department Pacific & Madison, Monterey <b>MHS</b> Monterey High School 101 Herrmann Dr., Monterey <b>MRNHS</b> Marina High School 2995 Rendova Rd., Marina <b>MTC</b> Mott Training Center 837 Asilomar Blvd, Pacific Grove <b>MTCA</b> Mott Training Center Annex 2211 Garden Rd., Shop C, Monterey	<b>NBI</b> North Bay Industries 1 University Circle, Monterey <b>OC</b> Oldemeyer Center 986 Hilby Ave., Seaside <b>PGHS</b> Pacific Grove High School 615 Sunset Dr., Pacific Grove <b>PRT</b> Pacific Repertory Theater Monte Verde & 8th, Carmel <b>SALLYG</b> Sally Griffin Active Living Center 700 Jewell Ave., Pacific Grove <b>SFD</b> Seaside Fire Department 1635 Broadway Ave., Seaside <b>SHS</b> Seaside High School 2200 Noche Buena, Seaside <b>SNJOSE</b> South Bay Regional Public Safety Training Consortium 3095 Yerba Buena Rd., San Jose

## Directory of Student Services

**Academic Council Petitions**  
(831) 645-1377

**Access Resource Center**  
(831) 646-4070

**Admissions & Records**  
(831) 646-4002 / admissions@mpc.edu

**Articulation**  
(831) 646-3013

**Assessment Office**  
(831) 646-4027 / assessment@mpc.edu

**Associated Students of MPC Office**  
(831) 646-4013

**Bookstore**  
(831) 657-4680

**CARE / CalWorks**  
(831) 646-4248

**Career / Transfer Resource Center**  
(831) 645-1336

**Certificate Requirements**  
(831) 646-4020

**Clubs, Student**  
(831) 646-4192

**Counseling Office**  
(831) 646-4020

**Dean, Student Services**  
(831) 645-1377

**Dean, Student Services**  
(831) 646-4155

**Dean, Student Services**  
(831) 646-4220

**Dual Enrollment**  
(831) 646-4282 / dualenrollment@mpc.edu

**Early Childhood Education Lab School**  
(831) 646-4066

**Education Center at Marina**  
(831) 646-4850 / marinaedcenter@mpc.edu

**EOPS Office**  
(831) 646-4247

**Financial Aid** (Student Financial Services)  
(831) 646-4030

**Graduation Requirements**  
(831) 646-4020

**Health Services**  
(831) 646-4017

**Sandy Nee**  
Student Services Building

**Jacque Evans**  
Student Services Building

Student Services Building

**He Seon Ihn**  
Student Services Building

Student Services Building

**Julie Osborne**  
Student Center

**Bookstore Manager**  
Student Center

**Kacey Giammanco**  
Student Services Building

**Sudeshna Nand**  
General Classrooms

**Counselors**  
Student Services Building

**Julie Osborne**  
Student Center

**Alethea De Soto**  
Student Services Building

**LaKisha Bradley**  
Student Services Building

**Eric Ogata**  
Student Services Building

**Wendy Bates**  
Athletics / Kinesiology

**Jeff Procvie**  
Early Childhood Education Lab School

**Eric Ogata**  
Student Services Building

Student Services Building

**Counselors**  
Student Services Building

**Leann Contapay**  
Student Services Building

**Housing Information**  
(831) 646-4192

**International Students**  
(831) 645-1380

**Math / Science Upward Bound**  
(831) 645-1306

**Parking Permits Purchase**  
(831) 646-4002

**Policies and Regulations, Student**  
(831) 646-4155

**Probation and Disqualification**  
(831) 645-1377

**Registration**  
(831) 646-4002 / admissions@mpc.edu

**Residency**  
(831) 646-4002 / admissions@mpc.edu

**Scholarships**  
(831) 646-4030

**Security**  
(831) 646-4099 / (831) 646-4292

**Sexual Harrassment / Sexual Misconduct**  
(831) 646-4850 / titleIX@mpc.edu

**Student Accounts**  
(831) 646-4046

**Student Activities**  
(831) 646-4192

**Student Center**  
(831) 646-4192

**Student Conduct**  
(831) 646-4155

**Student Employment**  
(831) 646-4195

**Student Equity & Achievements**  
(831) 646-4261 / seaprogram@mpc.edu

**Title IX**  
(831) 646-4850 / titleIX@mpc.edu

**TRIO Student Support Services (SSS)**  
(831) 646-4246

**Transcripts**  
(831) 646-4002 / admissions@mpc.edu

**Upward Bound**  
(831) 646-4089

**Veterans Assistance Office**  
(831) 646-4025 / (831) 646-4020

**Julie Osborne**  
Student Center

**Alethea DeSoto**  
Student Services Center

**Jasmine Do**  
Student Services Building

**Online via WebReg**

**VP of Student Services**  
Administration Building

**Sandy Nee**  
Student Services Building

**Admissions & Records**  
Student Services Building

**Admissions & Records**  
Student Services Building

**Student Financial Services**  
Student Services Building

Student Center

**Kayla Valentine**  
Human Resources

**Fiscal Services**  
Administration Building

**Julie Osborne**  
Student Center

**Julie Osborne**  
Student Center

**VP of Student Services**  
Administration Building

**Lien Nguyen**  
General Classrooms

**LaKisha Bradley**  
Student Services Building

**Kayla Valentine**  
Human Resources

**Grace Anongchanya**  
Student Services Building

**Admissions & Records**  
Student Services Building

**Sandra Washington**  
Student Services Building

**Eileen Crutchfield**  
Student Center

# MPC FOUNDATION MONTEREY PENINSULA COLLEGE

Thank you Business Partners for supporting MPC students!



1st Capital Bank

Hayashi Wayland

Vanderbilt CPAs PC

Cardinale Moving & Storage  
Lozano Smith, LLP

Dole Fresh Vegetables  
Mahoney & Associates  
Monterey Plaza Hotel

Kennedy, Archer & Giffen  
McGilloway, Ray, Brown & Kaufman



## Residential Customer

ECRWSS

### ADM ADMINISTRATION

- Fiscal Services
- Human Resources
- Information Center
- Information Technology
- Marketing & Communications
- Mail Room
- MPC Foundation
- President's Office
- V.P., Academic Affairs
- V.P., Administrative Services
- V.P., Student Services

### AC ART CERAMICS

### AD ART DIMENSIONAL

- Jewelry & Metal Arts
- Sculpture

### AG ART GALLERY

### AMP AMPHITHEATER

### AS ART STUDIO

- Creative Arts Division Office
- Student Art Center

### AT AUTOMOTIVE TECHNOLOGY

### BMC BUSINESS MATH & COMPUTING

- Business & Computer Science Division Office
- Business Skills Center
- Cooperative Work Experience Office
- Internship Program Office
- Math Learning Ctr.

### DA DANCE & ADAPTIVE PE

- Adaptive Physical Education

### ECE EARLY CHILDHOOD EDUCATION

- Early Childhood Laboratory School

### FA FACILITIES

- Custodial Services
- Grounds
- Maintenance
- Shipping / Receiving

### FC FAMILY & CONSUMER SCIENCE

- FC Kitchen

### FTC FITNESS / TRAINING CENTER

### GA GRAPHIC ARTS

### GC GENERAL CLASSROOMS

- Career Transfer Resource Center
- El Centro
- Job Center

### GYM GYMNASIUM / KINESIOLOGY

- Athletic Training
- Equipment Room
- Gymnasium
- Locker Rooms
- Kinesiology Division Office

### HU HUMANITIES

### HSS HUMANITIES / SUPPORT SERVICES

- Access Resource Center (ARC)
- High Tech Center
- Humanities Division Office

### IC INTERNATIONAL CENTER

### LF LECTURE FORUM

- Marine Advanced Technology Education (MATE) Center
- Print Shop

### LTC LIBRARY & TECHNOLOGY CENTER

- English & Study Skills Center
- English as a Second Language (ESL) Lab
- Instructional Technology Dept.
- Leon Stutzman Room
- Online Education
- Reading Center
- Sam Karas Room
- STEM CEL Tutoring



<b>P</b> Public Parking	All vehicles must have a parking pass. Buy one at Fiscal Services in: <b>ADM</b>	<b>I</b> Information	<b>S</b> Security Office 646-4099	<b>R</b> Restrooms	<b>L</b> Lactation Room	<b>B</b> MST Bus Stop
<b>P</b> Staff Parking		<b>+</b> First Aid / Nurse	<b>⚡</b> Automated External Defibrillator (AED)	<b>R</b> Gender-Inclusive Restroom	<b>♿</b> Accessibility / Elevator	<b>WiFi</b> Campus has Free Wi-Fi

### LS LIFE SCIENCES

- Life Science Division Office

### MU MUSIC

- Listening Center
- Music Hall

### MV MODULAR VILLAGE

- T300
- T500
- T600

### NU NURSING

- Nursing Division Office

### PS PHYSICAL SCIENCE

- Physical Science Division Office

### SS SOCIAL SCIENCE

- Social Science Division Office
- Snack Shack

### SC STUDENT CENTER

- Almaden Room
- Associated Students of MPC (ASMP)
- Bookstore
- Cafeteria
- Costanoan Room
- Housing Information Center
- Student Activities Office
- TRIO Learning Center
- Veteran's Resource Center
- Security: 646-4099**

### STS STUDENT SERVICES

- Access Resource Center
- Admissions & Records
- Assessment Center
- CalWorks
- Cooperative Agencies Resources for Education (CARE)
- Counseling
- Dean of Student Services

### STS STUDENT SERVICES CONTINUED

- Extended Opportunity Programs & Services (EOPS)
- First Aid & Emergency Care**
- International Student Programs
- Residency Info
- Student Financial Services
- Student Health & Psychological Services
- Testing Center (ARC)
- TRIO Offices
- Student Equity & Achievement

### T100 TEMPORARY BUILDING

- Planning, Research & Institutional Effectiveness (PRIE)

### TH THEATER