

Redesign Recommendations to Enhance Academic & Learning Support

Guided Pathways/Academic Senate
Student Academic Support Work Team

Guide Posts

- [Vision for Success](#) Core Commitment of pairing “high expectations with high support”
- CCCCO [AB 705 implementation guidance language](#):
 - co-curricular design and non-curricular support
 - collaboration between academic and student support areas
- MPC’s Educational Master Plan
 - “Provide robust academic and learning support services; promote a culture of information literacy knowledge, skills, and habits; promote cohort-based learning communities and affinity groups to support acceleration, retention, and completion.”
- Guided Pathways [Scale of Adoption Self-Assessment](#) (Pillar 2: Staying on the Path)

Inquiry Process

Spring 2019: LSS Work Group and Academic Senate

- created inventory of campus academic and learning support programs (both formal and informal);
- conducted student and campus-wide surveys;
- completed external site visits

Fall 2019: GP/AS SAS Work Team

- completed SWOT-style analysis
- summarized external inquiry
- PRIE-O presented on survey findings
- engaged in active, collaborative discussion

Team Members and Contributors

GP/AS SAS Team Members

Team Leads: Adria Gerard (Senate/faculty), Jeannie Kim-McPherson (GP/faculty), Vincent Van Joolen (administrator)

Counseling Faculty: Grace Anongchanya (TRiO), Kelly Fletes (HSI), Elizabeth Gonzalez (Counseling), Chris Calima (Counseling), Yuliana Vasquez (EOPS)

Non-Counseling Faculty: Kathleen Rozman (ARC/Learning Skills), Eric Lake (MLC), Adria Gerard (ESSC/RC), Molly May (ENSL), Elisabeth Thomas (Library), Anita Johnson (English), Joel Pickering (Math)

Classified: Eileen Crutchfield (VRC), Paige Inman (STEM CEL), Elroy Gardenhire (Umoja), Amber Brumley (Orientation/SSSP), Chris Rendon (Dual Enrollment)

Administrator(s)/Managers: Vincent Van Joolen, Heather Tisdale (ESSC/RC), Diego Espinoza (HSI), LaKisha Bradley (MEC/SEA), Jeffery Sundquist (Library)

English, Math, ENSL Departments

Counseling

Key Identified Needs

1. High Level of Coordination between Centers/Areas and Communication out to Campus Community
2. Enhancement and Expansion of Academic Support Staff Resources
3. Intra-Campus Collaboration
4. Institutional Commitment to Funding Academic and Learning Support

Recommendations: Immediate (by AY 2020–2021)

Identified Needs

1. High Level of Coordination between Centers/Areas and Communication out to Campus Community
2. Enhancement and Expansion of Academic Support Staff Resources
3. Intra-Campus Collaboration
4. Institutional Commitment to Funding Academic and Learning Support

Adopt a centralized Academic Support organizational structure and location

- Organizational redesign resulting in a broad organizational umbrella (i.e., Academic Support) that would house, support, and ensure coordination between individual programs
 - ESSC/RC, MLC, STEM CEL, Tutorial Services (new), and Marina Academic Supp.
 - Academic Administrator (Associate Dean of Academic Support)
- Centralized location
 - ESSC/RC
 - MLC
 - STEM CEL
 - Tutorial Services
 - Learning Support Hub

Recommendations: Immediate (by AY 2020–2021)

Identified Needs

1. High Level of Coordination between Centers/Areas and Communication out to Campus Community
2. Enhancement and Expansion of Academic Support Staff Resources
3. Intra-Campus Collaboration
4. Institutional Commitment to Funding Academic and Learning Support

Address identified need for expansion and enhancement of academic support

- Establish Tutorial Services Program (tutorial support for disciplines outside English and math)
 - Tutorial Services Program Lead
- Integrate ESL tutorial support into ESSC/RC
- Program permanency for STEM CEL
- Pilot a student tutor model at Marina (~Spring '21)
 - FT Instructional Specialist
- Establish, expand, and/or strengthen student tutor and peer mentor program

Recommendations: Immediate (by AY 2020–2021)

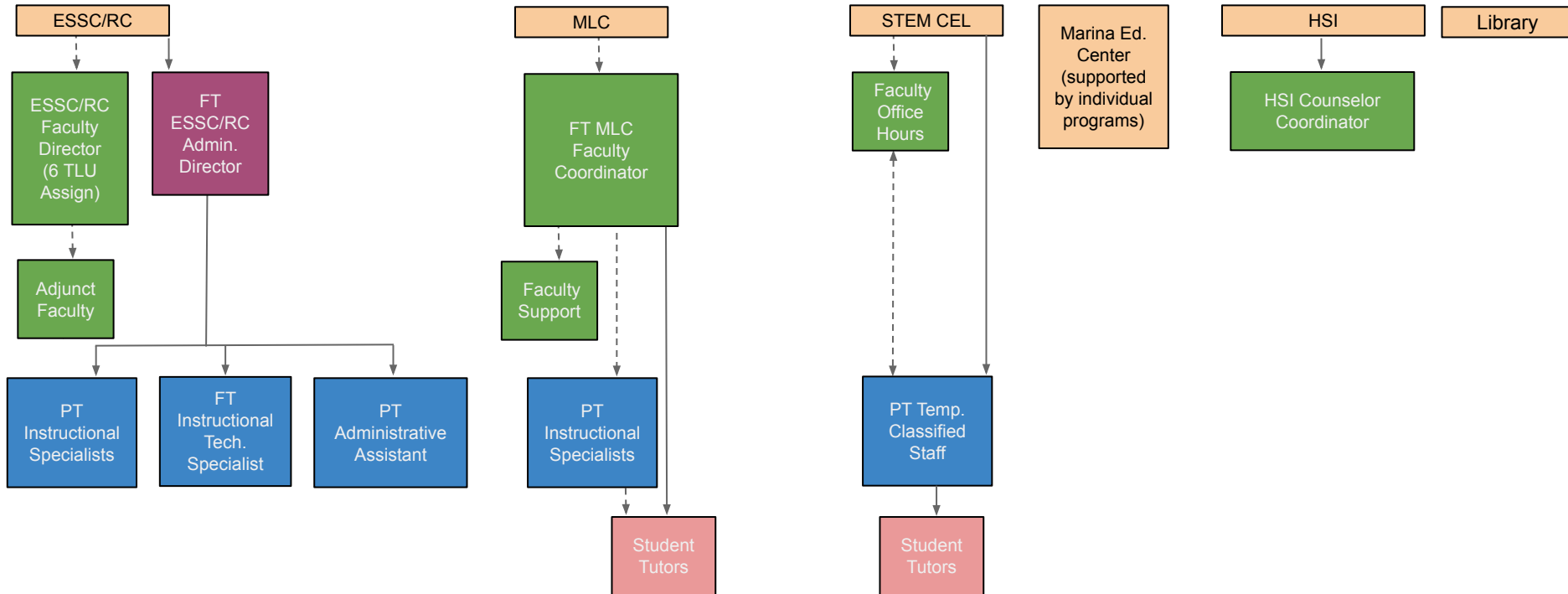
Identified Needs

1. High Level of Coordination between Centers/Areas and Communication out to Campus Community
2. Enhancement and Expansion of Academic Support Staff Resources
3. Intra-Campus Collaboration
4. Institutional Commitment to Funding Academic and Learning Support

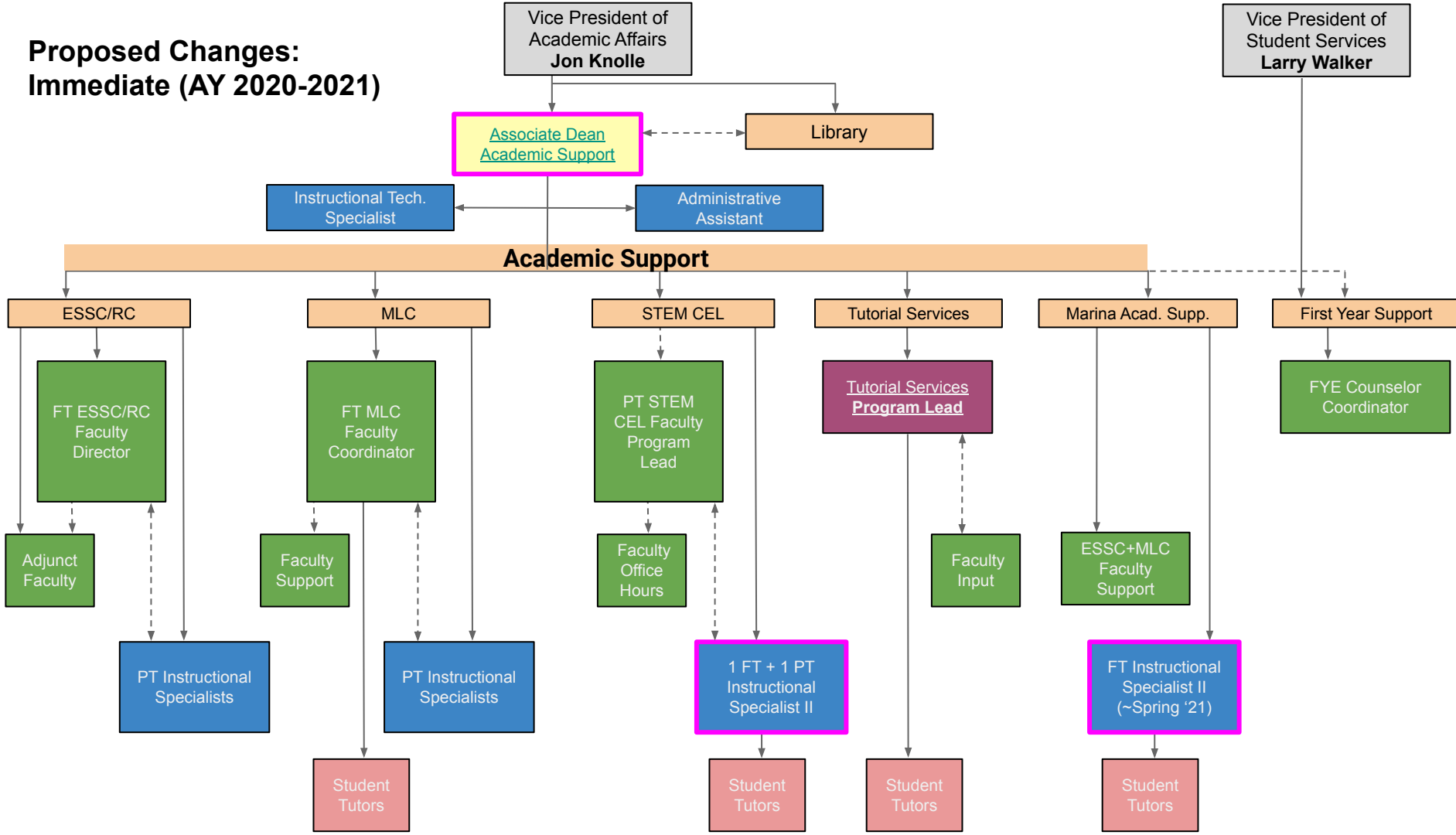
Provide enhanced support including wraparound support resources for students, particularly in response to AB705

- Coordinate with “First-Year Support” Counselor Coordinator in an ongoing, institutionally-supported program
- In collaboration with Student Services, provide intrusive counseling for identified sections of accelerated English and math courses
- Establish a Counseling/Student Services hub to integrate academic and learning support availability for students

Existing Academic Support Programs



Proposed Changes: Immediate (AY 2020-2021)



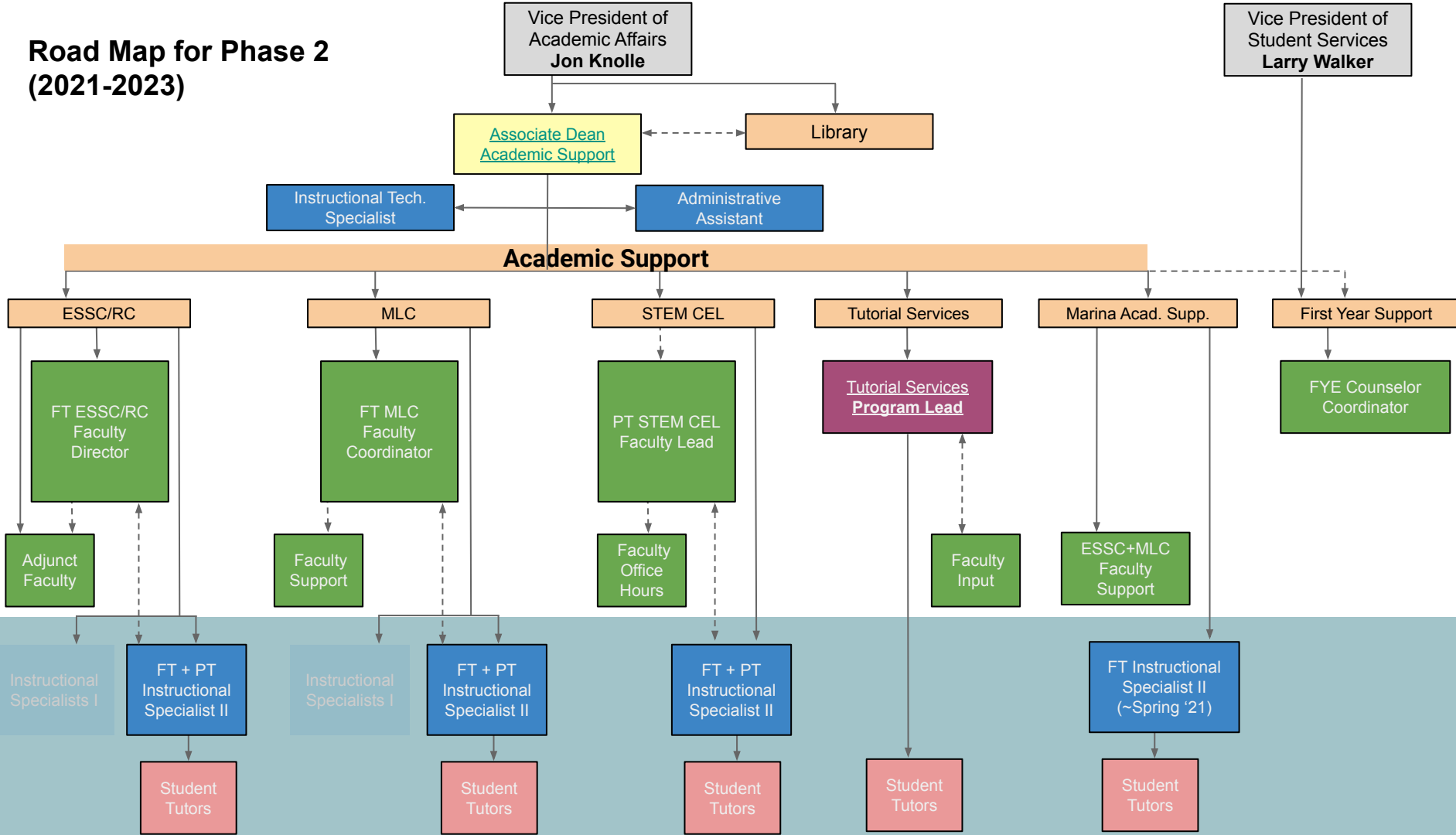
Road Map for Phase 2 (2021–2023)

Identified Needs

1. High Level of Coordination between Centers/Areas and Communication out to Campus Community
2. Enhancement and Expansion of Academic Support Staff Resources
3. Intra-Campus Collaboration
4. Institutional Commitment to Funding Academic and Learning Support

- Central location for academic and learning support programs in one student-friendly, accessible space
 - Reimagined space for modular technology, dynamic study space, quiet work areas, one-to-one tutoring, group tutoring, and confidential counseling sessions
- Integration of technologies for uniform record-keeping, communication, and data collection
- Further integration of student tutoring and peer mentoring
- Transition to include full-time classified staff (rather than all part-time)

Road Map for Phase 2 (2021-2023)



Potential Measures of Success

- Student retention, success, and persistence
 - focus on English and math courses
 - emphasis on underserved/underrepresented populations
- Qualitative data
- CRLA Certification
- Additional recommended measures:
 - co-enrollment trends between courses (particularly in accelerated English and math courses)
 - usage data
 - data related to tutorial support outside of ENGL, ENSL, and STEM

Additional Key Considerations

- Continued collaboration
 - academic support ↔ discipline faculty
 - learning support (Student Services) ↔ academic support (Academic Affairs)
- Recent staffing reductions and budget cuts
- Ongoing planning to address GP equity considerations
- Enhance online academic support
- Enhance learning and academic support for dual enrollment program
- Addition of language to MPC's Technology Master Plan and Facilities Master Plan

[Link to GP/AS SAS Work Team
Narrative Recommendations](#)

Questions?