

# **Redistricting Monterey Peninsula Community College District Board of Trustees**

**August 23, 2011**

*Jeanne Gobalet, Ph.D.  
Lapkoff & Gobalet  
Demographic Research, Inc.  
[www.Demographers.com](http://www.Demographers.com)*



# Demographic Redistricting Considerations:

- ✓ **Must use Census 2010 data**
- ✓ **Districts must have (almost) equal populations**
  - ✓ **Current plan's deviation is 17.9%, which is too high.**
  - ✓ **Trustee Area 2's population is too large, and Area 3's is too small.**
- ✓ **The federal Voting Rights Act applies (no *retrogression* permitted)**

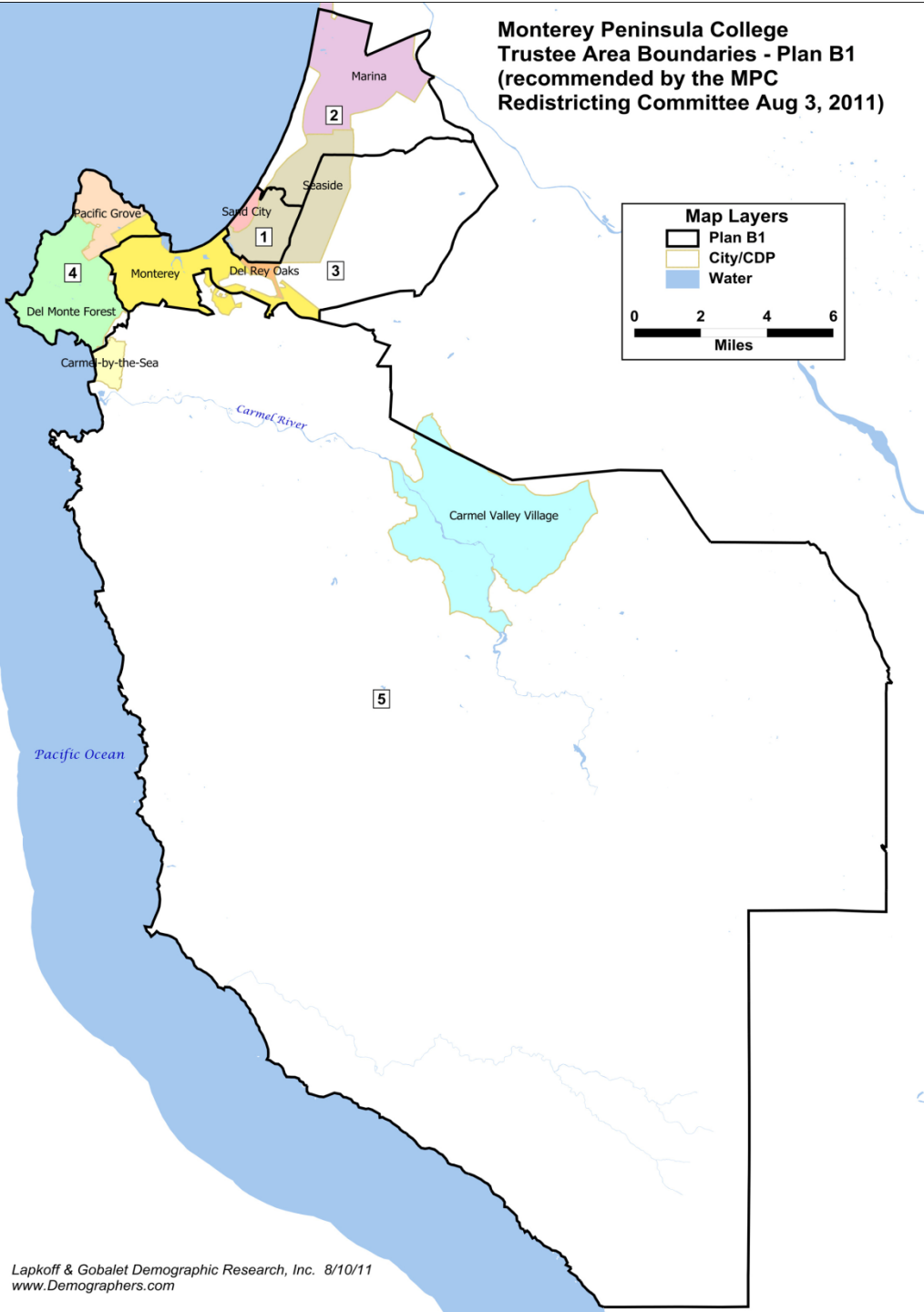
# **Demographers' redistricting tasks:**

- 1. Developed electronic base map and a comprehensive population and voter database that was used throughout the process. Assessed Census 2010 characteristics of the current Trustee Areas.**
- 2. Developed five-district draft trustee area scenarios that have equal populations (within the permitted deviation) and conform to the requirements of the federal Voting Rights Act.**
- 3. Met twice with community advisory committee and refined scenario(s) until one was selected (Scenario B1).**

## **Next steps:**

- 4. Prepare preclearance submission (after adoption of plan by Board of Trustees).**
- 5. Provide detailed documentation for adopted plan to College, County Office of Education, Registrar of Voters.**

**Monterey Peninsula College  
Trustee Area Boundaries - Plan B1  
(recommended by the MPC  
Redistricting Committee Aug 3, 2011)**



**Monterey Peninsula College  
Recommended Plan (B1)  
and Current Plan**

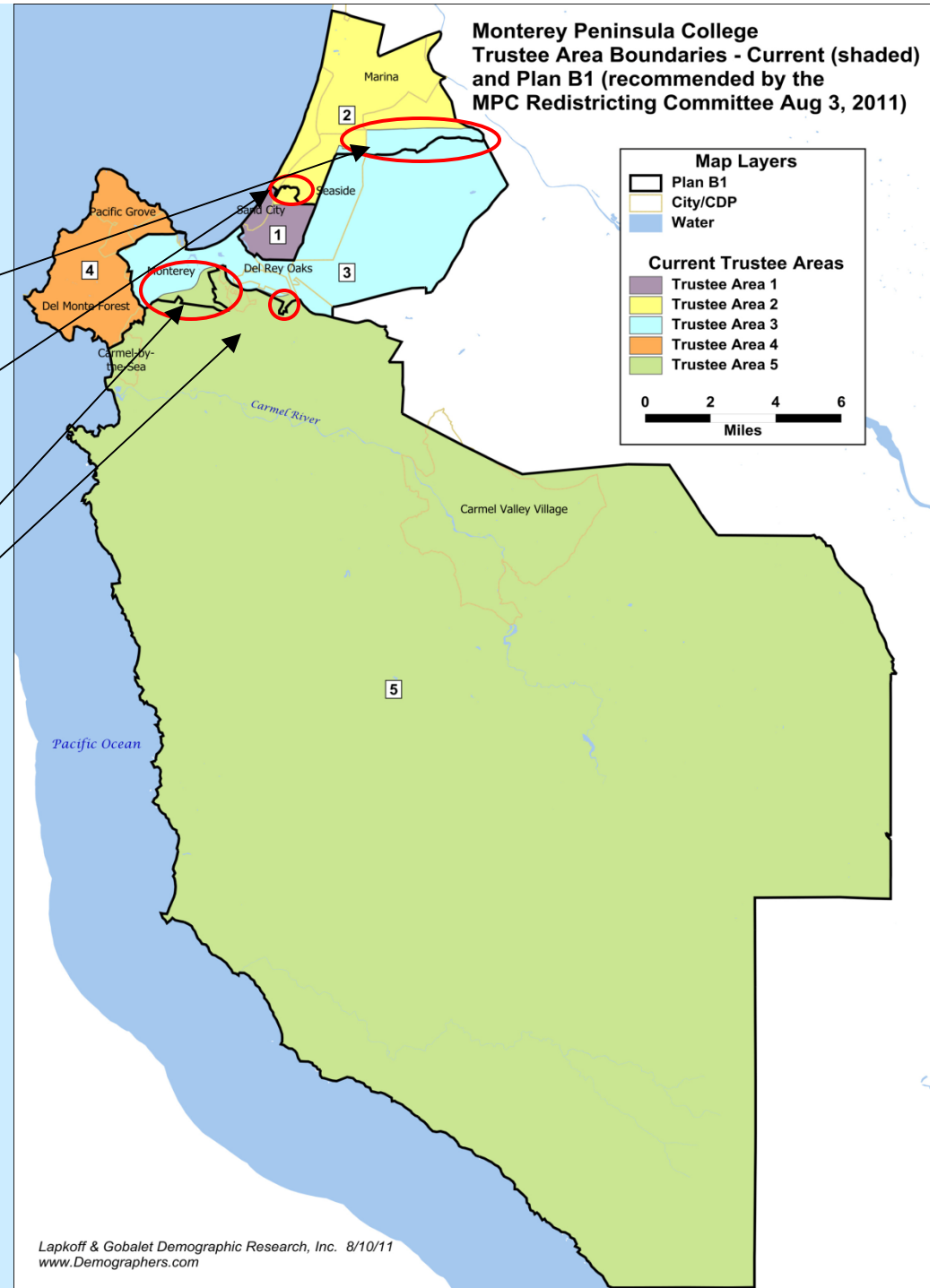
\*VAP = Voting Age Population (aged 18+)

\*\*CVAP = Citizen Voting Age Population

				Percent of trustee area's population that was:									
				Hispanic/Latino			Spanish Surname		Asian		African American		
Current Plan	Population	Deviation	Percent Deviation	Total pop	VAP*	estimated **CVAP 2005-09	Registered 2010	Voters Nov 2010	Total pop	VAP*	Total pop	VAP*	
1	25,306	-335	-1.3%	51.1%	44.1%	20.6%	19.7%	15.9%	10.1%	11.2%	9.3%	10.2%	
2	27,983	2,342	9.1%	25.2%	21.0%	15.2%	14.8%	13.3%	19.4%	20.6%	8.1%	7.8%	
3	23,406	-2,235	-8.7%	15.6%	13.2%	9.6%	7.9%	6.6%	9.7%	9.5%	3.4%	3.2%	
4	24,773	-868	-3.4%	9.6%	8.4%	7.0%	5.6%	4.9%	8.0%	7.3%	1.8%	1.6%	
5	26,737	1,096	4.3%	7.3%	6.0%	3.5%	3.8%	3.2%	4.9%	4.3%	1.0%	0.7%	
<b>Total</b>	<b>128,205</b>	<b>4,577</b>	<b>17.9%</b>	<b>21.8%</b>	<b>17.9%</b>	<b>10.4%</b>	<b>9.1%</b>	<b>7.3%</b>	<b>10.6%</b>	<b>10.5%</b>	<b>4.8%</b>	<b>4.6%</b>	
<b>Plan B1 8/3/11 (Recommended)</b>													
1	26,981	1,340	5.2%	49.1%	42.4%	20.1%	19.2%	15.5%	10.5%	11.5%	9.2%	10.0%	
2	26,308	667	2.6%	25.6%	21.3%	15.3%	15.0%	13.6%	19.5%	20.9%	8.1%	7.9%	
3	25,584	-57	-0.2%	14.9%	12.8%	9.4%	7.8%	6.5%	9.9%	9.6%	3.6%	3.3%	
4	24,773	-868	-3.4%	9.6%	8.4%	7.0%	5.6%	4.9%	8.0%	7.3%	1.8%	1.6%	
5	24,559	-1,082	-4.2%	7.3%	6.0%	3.5%	3.9%	3.3%	4.3%	3.9%	0.6%	0.5%	
<b>Total</b>	<b>128,205</b>	<b>2,422</b>	<b>9.4%</b>	<b>21.8%</b>	<b>17.9%</b>	<b>10.4%</b>	<b>9.1%</b>	<b>7.3%</b>	<b>10.6%</b>	<b>10.5%</b>	<b>4.8%</b>	<b>4.6%</b>	
<b>Plan Comparisons</b>													
<b>Current Plan &amp; Plan B1</b> <i>Differences (regression assessment):</i>													
1	1,675			-2.0%	-1.7%	-0.5%	-0.5%	-0.4%	0.4%	0.3%	-0.1%	-0.2%	
2	-1,675			0.4%	0.3%	0.1%	0.2%	0.2%	0.1%	0.2%	0.0%	0.1%	
3	2,178			-0.7%	-0.4%	-0.3%	-0.1%	-0.1%	0.2%	0.1%	0.2%	0.1%	
4	0			0.0%	0.0%	0.0%	0.0%	0.0%	0.0%	0.0%	0.0%	0.0%	
5	-2,178			0.0%	0.0%	0.0%	0.0%	0.0%	-0.6%	-0.4%	-0.4%	-0.3%	


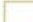

Territory that would change **circled in red:**

1. Shift from TA 3 to TA 2 (CSUMB campus)
2. Most of Seaside Highlands from TA2 to TA 3.
3. More of the city of Monterey in TA 3.

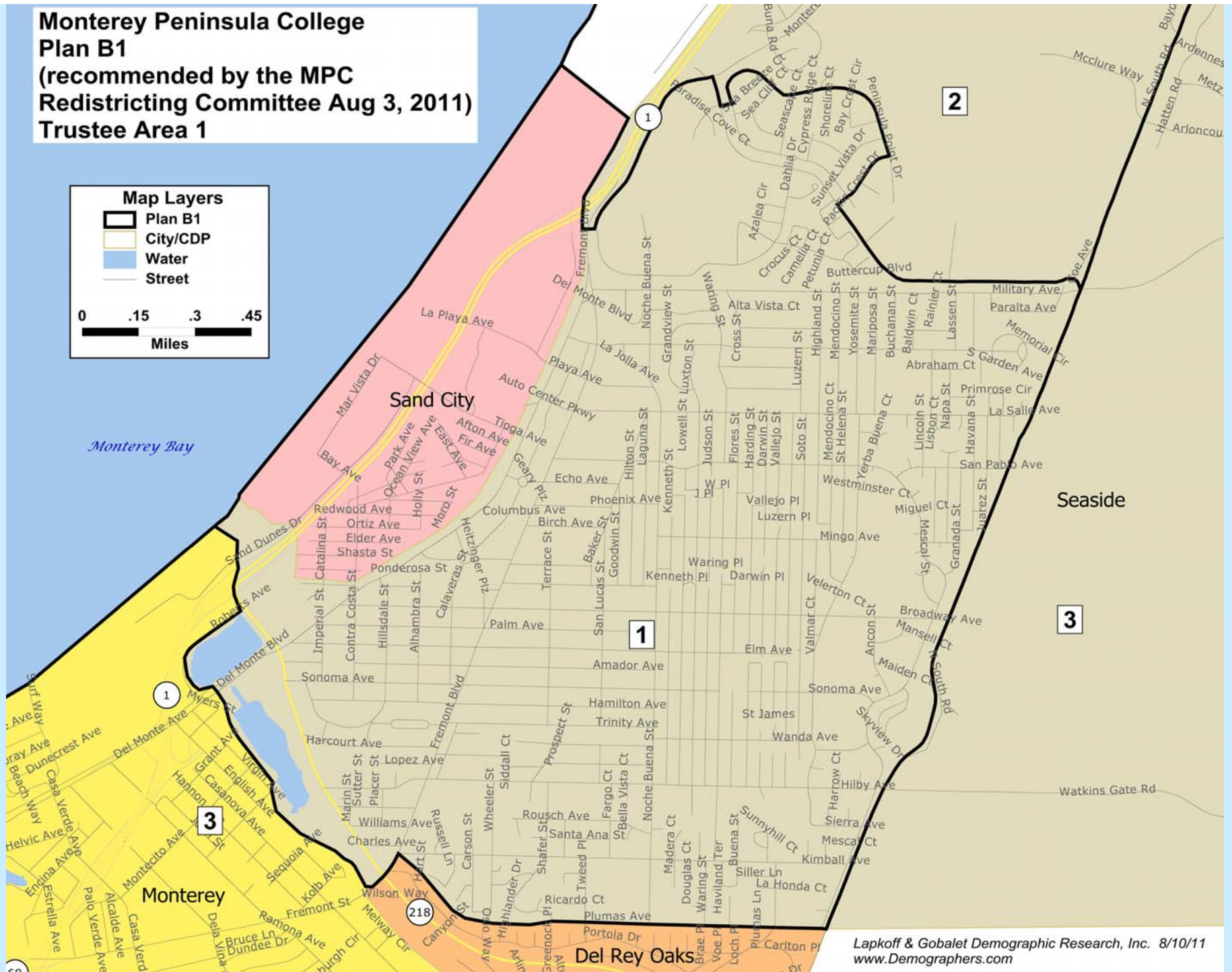


**Monterey Peninsula College  
Plan B1  
(recommended by the MPC  
Redistricting Committee Aug 3, 2011)  
Trustee Area 1**

**Map Layers**

-  Plan B1
-  City/CDP
-  Water
-  Street

0 .15 .3 .45  
Miles



**Map Layers**

-  Plan B1
-  City/CDP
-  Water
-  Street

0 .33 .67 1  
Miles

Monterey Bay

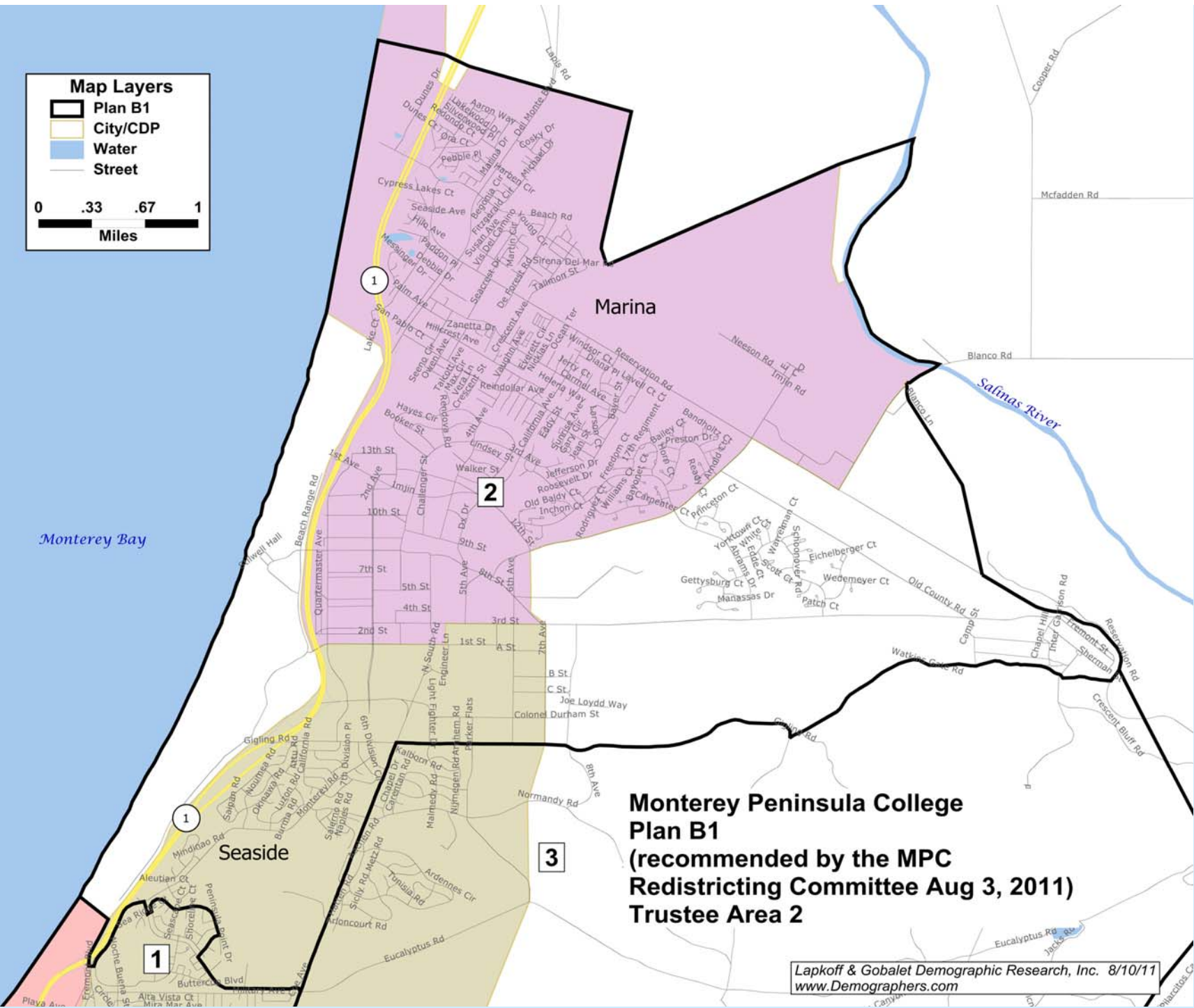
Marina

Salinas River

Seaside

**Monterey Peninsula College  
Plan B1  
(recommended by the MPC  
Redistricting Committee Aug 3, 2011)  
Trustee Area 2**

Lapkoff & Gobalet Demographic Research, Inc. 8/10/11  
www.Demographers.com



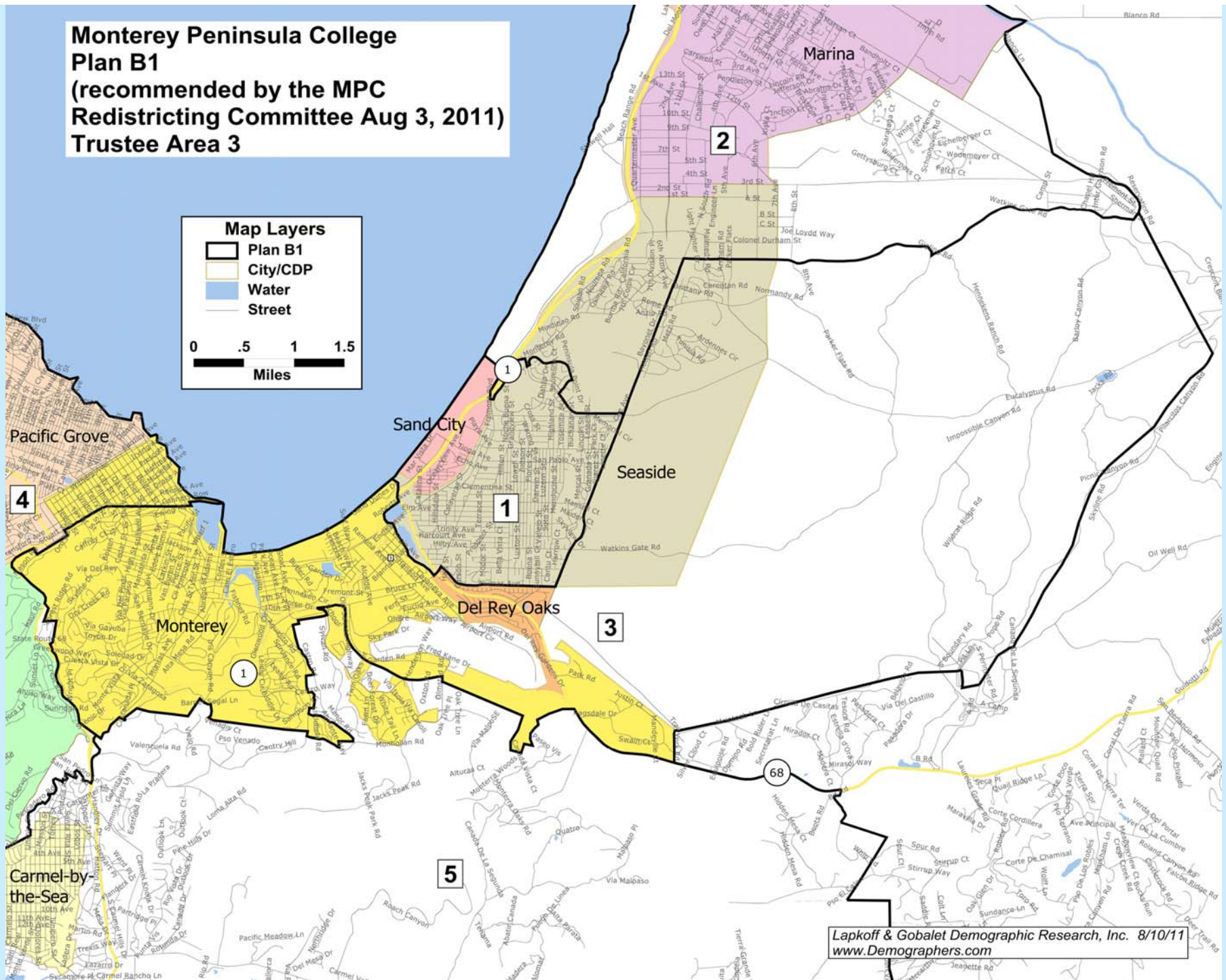


**Monterey Peninsula College  
Plan B1  
(recommended by the MPC  
Redistricting Committee Aug 3, 2011)  
Trustee Area 3**

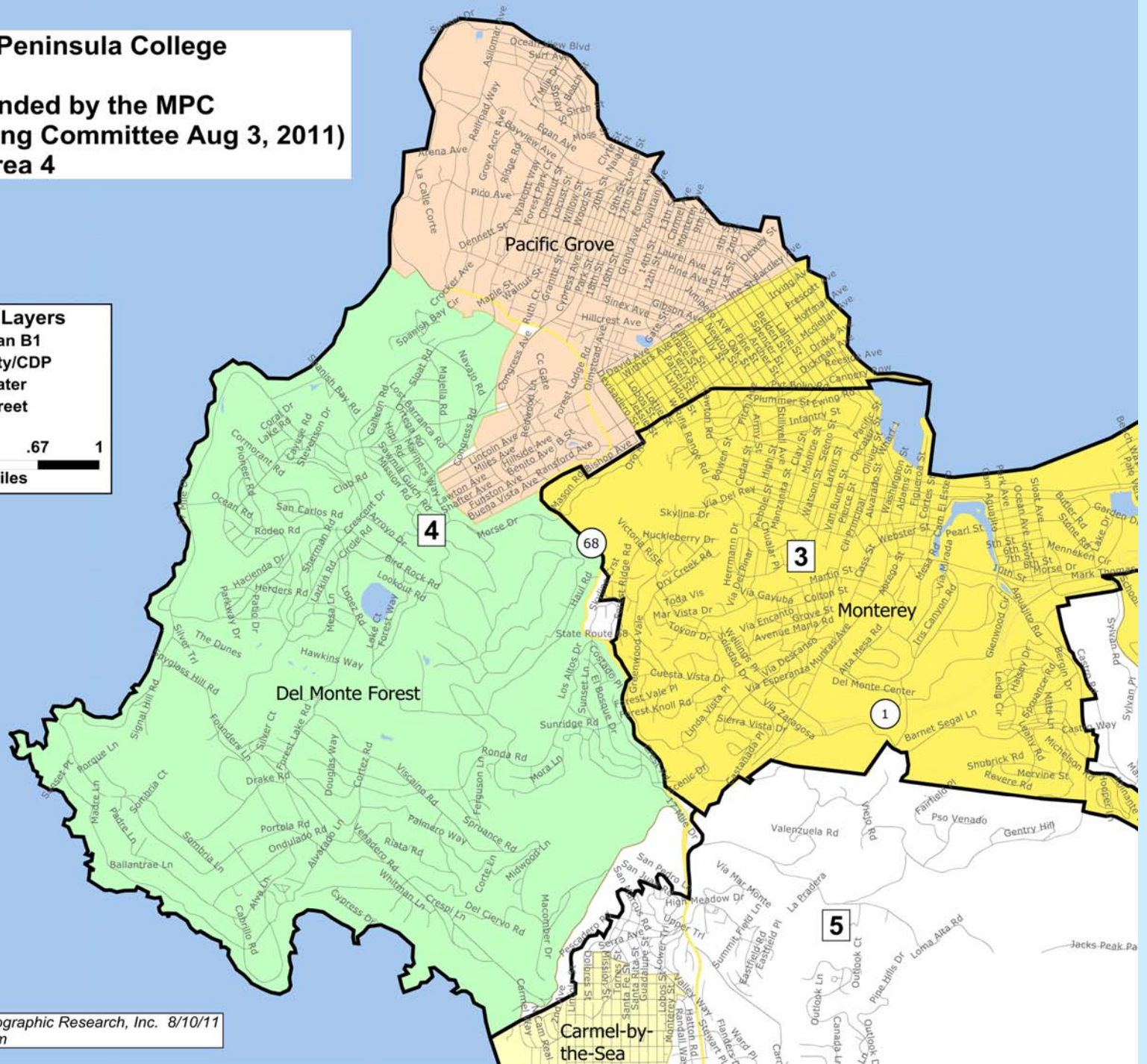
**Map Layers**

-  Plan B1
-  City/CDP
-  Water
-  Street

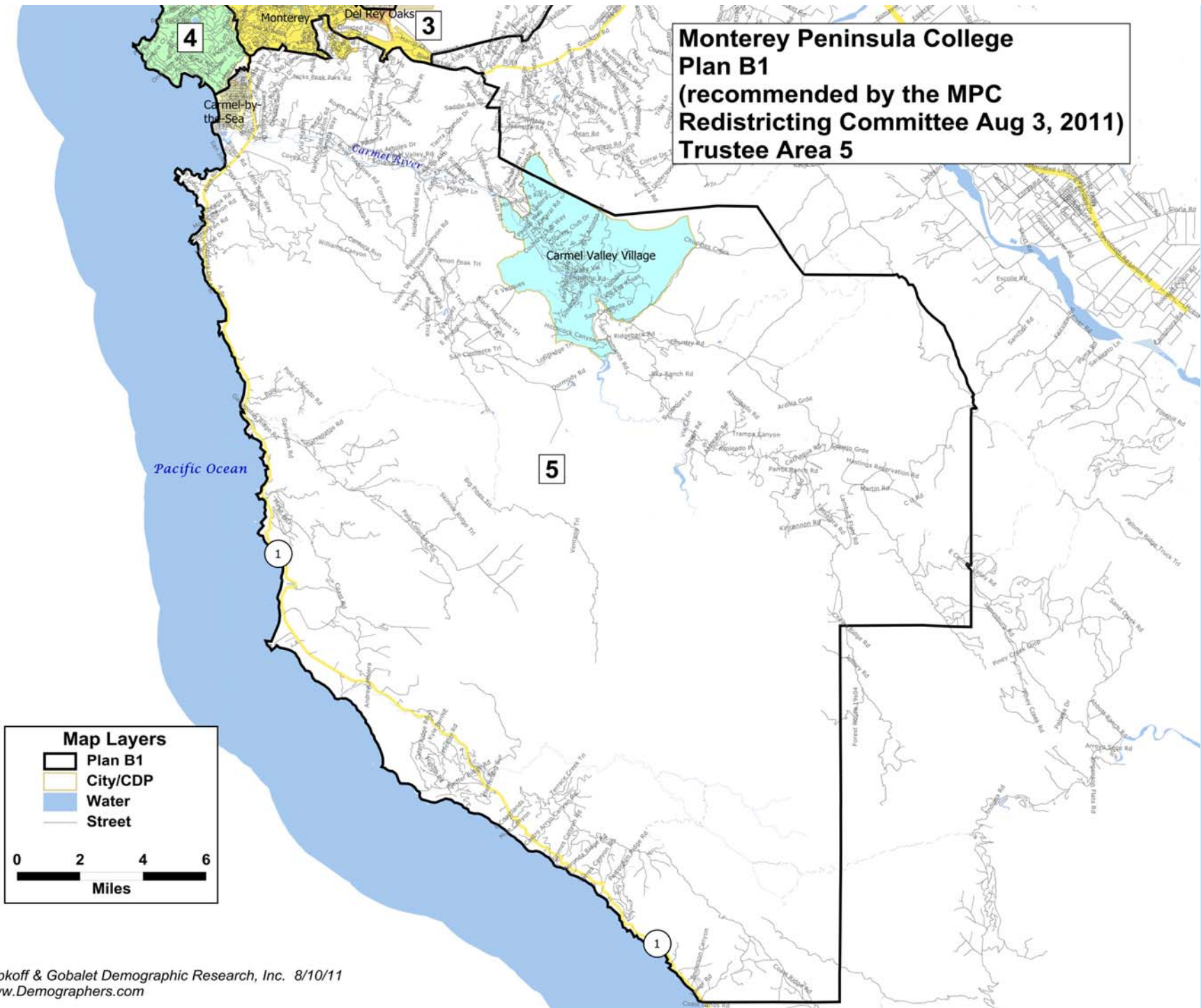
0 .5 1 1.5  
Miles



**Monterey Peninsula College  
Plan B1  
(recommended by the MPC  
Redistricting Committee Aug 3, 2011)  
Trustee Area 4**



**Monterey Peninsula College  
Plan B1  
(recommended by the MPC  
Redistricting Committee Aug 3, 2011)  
Trustee Area 5**



**Map Layers**

- Plan B1
- City/CDP
- Water
- Street

0      2      4      6  
 Miles

# Questions?

*Jeanne Gobalet, Ph.D.  
Lapkoff & Gobalet  
Demographic Research, Inc.  
[www.Demographers.com](http://www.Demographers.com)*