

Monterey Peninsula Community College District

Governing Board Agenda

September 27, 2011

New Business Agenda Item No. B

President's Office
College Area

Proposal:

That the Governing Board hold a public hearing to receive public comments on the plan to redraw trustee area boundaries to address changes in population identified in the 2010 Census.

Background:

In accordance with the redistricting process approved by the Board at the May 24, 2011 meeting, the plans, including the MPC trustee area redistricting committee's recommended Plan B-1, were presented for discussion and an initial public hearing at the August meeting. There were no public concerns voiced regarding the recommended plan. The next step in the approved process is to hold a second public hearing on the recommended plan followed by consideration/action by the Board at the September meeting. Following adoption, the redistricting plan will be submitted to the Department of Justice for preclearance.

Budgetary Implications:

None.


PUBLIC HEARING: Trustee area redistricting plan B-1 recommended by the MPC Citizens Redistricting Advisory Committee.

Recommended By:



Douglas R. Garrison, Superintendent/President

Prepared By:



Vicki Nakamura, Assistant to the President

Agenda Approval:



Douglas R. Garrison, Superintendent/President

Monterey Peninsula Community College District

Governing Board Agenda

September 27, 2011

President's Office
College Area

New Business Agenda Item No. C

Proposal:

That the Governing Board approve a resolution to adjust trustee area boundaries consistent with Redistricting Plan B-1 recommended by the MPC Citizens Redistricting Advisory Committee.

Background:

The Governing Board approved a redistricting process and appointed a ten member MPC Citizens Redistricting Advisory Committee representative of the five trustee areas to review 2010 Census data and consider plans for the adjustment of trustee area boundaries. The committee was assisted by the District's demographic consultant, Dr. Jeanne Gobalet, and the committee's work was facilitated by Ms. Fran Gaver.

The committee met twice in July and August to review Dr. Gobalet's demographic evaluation and consider options for redrawing trustee area district boundaries to ensure equal population distribution with the allowed 10% deviation. The 2010 Census showed the District has a total population of 128,205. The ideal population in each of the five trustee areas should be 25,641 or 1/5 of the total population. Dr. Gobalet determined trustee area 2 (which includes Marina and a portion of Seaside) had gained in population and trustee area 3 (covering Monterey and Del Rey Oaks) had lost population.

The committee reviewed scenarios that would result in minimal change to the boundaries and suggested revisions to strengthen communities of interest in the Marina and Seaside trustee areas. The committee also considered precinct boundaries and possible retrogressive effects. (Retrogression occurs when any change, such as a boundary adjustment, reduces the ability of members of groups protected under the Voting Rights Act to elect a representative of their choice. The federal Department of Justice considers retrogression when evaluating the redistricting plan for preclearance.) After much discussion, the committee recommended a redistricting plan, B-1, for adoption by the Board. Plan B-1 adjusts the boundaries of the current plan as follows:

- Seaside Highlands area is moved from trustee area 2 to trustee area 1,
- All of CSUMB is now in trustee area 1,
- A large portion of the Jack's Peak area is moved from trustee area 5 to trustee area 3.

Plan B-1 has minor retrogressive effects for trustee area 5 only and largely follows precinct boundaries, facilitating implementation of the plan.

The maps for Plan B-1 and other plans considered by the committee along with a chart showing the demographic characteristics are attached for the Board's review. Following the redistricting process approved by Board, the plans, including the committee's recommendation, were presented for discussion

and an initial public hearing at the August 23, 2011 Board meeting. There were no public comments received at the hearing. The next step in the redistricting process is to hold a second public hearing with consideration/adoption of a final plan by the Board at the September 27, 2011 meeting.

Following adoption, the redistricting plan will be submitted to the Department of Justice for preclearance.

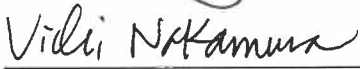
Budgetary Implications:

Funding to cover expenses for phases 2-4 of approximately \$34,000 for the consultant's demographic evaluation work has been budgeted in FY 2011-12.

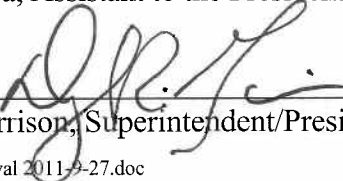
RESOLUTION: **BE IT RESOLVED,** That Resolution No. 2011-2012/31 to adjust trustee area boundaries consistent with Redistricting Plan B-1, as recommended by the MPC Citizens Redistricting Advisory Committee, be approved.

Recommended By: 

Douglas R. Garrison, Superintendent/President

Prepared By: 

Vicki Nakamura, Assistant to the President

Agenda Approval: 

Douglas R. Garrison, Superintendent/President

/c:/my docs/board/Trustee Area Redistricting Plan Approval 2011-9-27.doc

MONTEREY PENINSULA COMMUNITY COLLEGE DISTRICT

RESOLUTION NO. 2011-2012/31

**RESOLUTION ADOPTING A FINAL REDISTRICTING PLAN FOR THE MONTEREY PENINSULA
COMMUNITY COLLEGE DISTRICT TRUSTEE AREAS BASED UPON THE 2010 CENSUS**

WHEREAS, Education Code Section 5019.5 requires community college districts to evaluate trustee areas for population equality and adjust the boundaries, if necessary; and

WHEREAS, the Governing Board of the Monterey Peninsula Community College District approved formation of the MPC Citizens Redistricting Advisory Committee and appointed 2 representatives from each of the five trustee areas to evaluate population and demographic data from the 2010 Census and recommend appropriate changes in trustee area boundaries in order to ensure compliance with state and federal law; and,

WHEREAS, the Governing Board retained the firm of Lapkoff & Gobalet Demographic Research, Inc. to assist the District and the Committee in evaluating 2010 Census data and developing various redistricting plans; and

WHEREAS, on July 13, 2011, and August 3, 2011, the Committee convened two public meetings to review redistricting options, and agreed to recommend a final redistricting plan (Plan B-1) to the Governing Board; and,

WHEREAS, the draft redistricting plans were reviewed by the Governing Board at regularly scheduled meetings on August 23, 2011, and September 27, 2011, and public comment was solicited and considered at public hearings conducted at the same meetings;

NOW THEREFORE BE IT RESOLVED that the Governing Board of the Monterey Peninsula Community College District adopt the final redistricting plan (Plan B-1); and

BE IT FURTHER RESOLVED that the final redistricting plan (Plan B-1) be submitted to the Monterey County Superintendent of Schools and the Monterey County Registrar of Voters.

ADOPTED, SIGNED AND APPROVED this 27th day of September, 2011.

BOARD OF TRUSTEES OF THE MONTEREY PENINSULA
COMMUNITY COLLEGE DISTRICT

Lynn Davis, Chair

ATTEST:

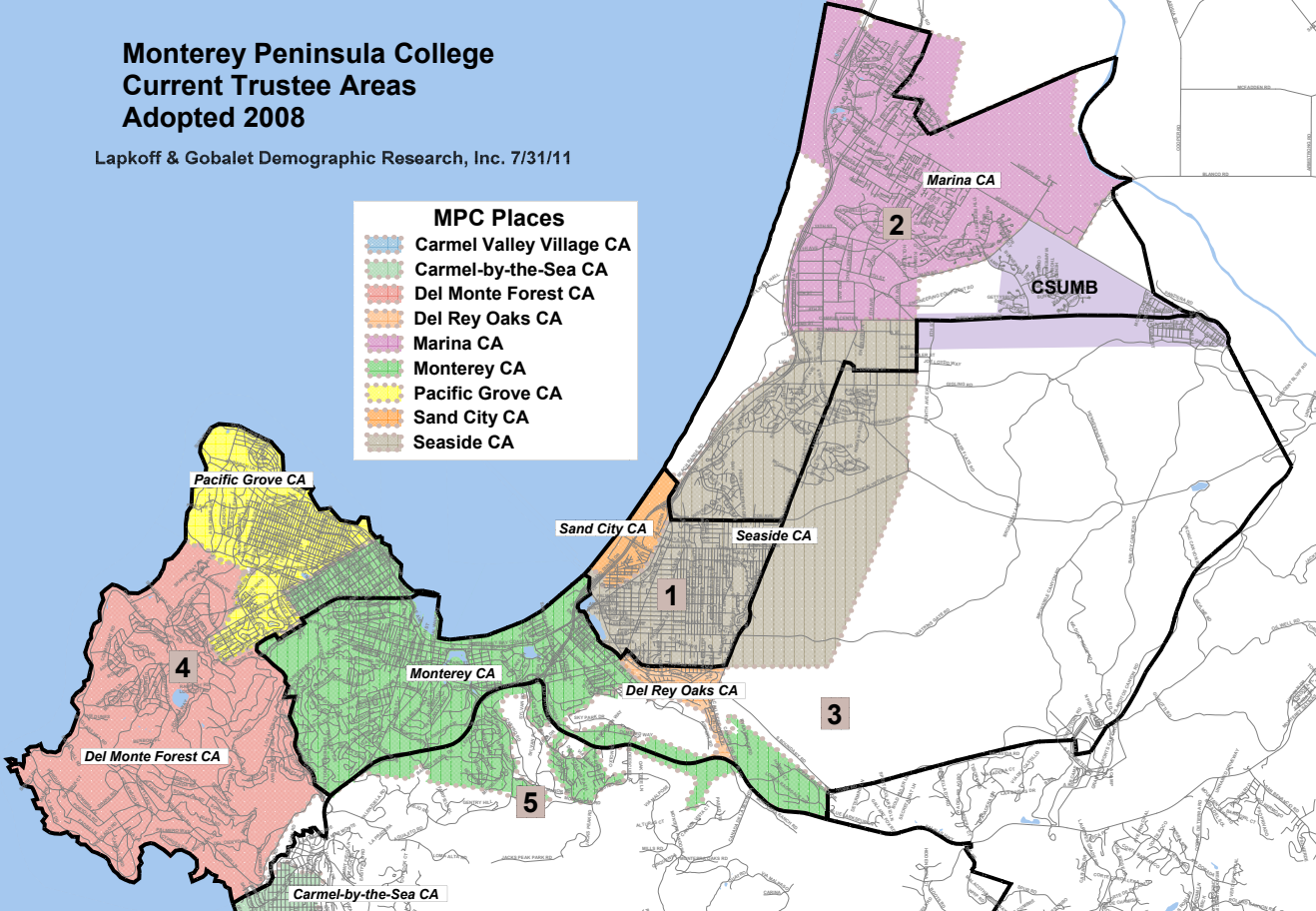
Douglas R. Garrison, Ed.D., Secretary

Monterey Peninsula College Current Trustee Areas Adopted 2008

Lapkoff & Gobalet Demographic Research, Inc. 7/31/11

MPC Places

- Carmel Valley Village CA
- Carmel-by-the-Sea CA
- Del Monte Forest CA
- Del Rey Oaks CA
- Marina CA
- Monterey CA
- Pacific Grove CA
- Sand City CA
- Seaside CA



Monterey Peninsula College Trustee Area Plan Comparisons

Current Plan

Plan A 7/13/2011

Plan B 7/30/2011

Plan B1 (Recommended) 8/3/2011

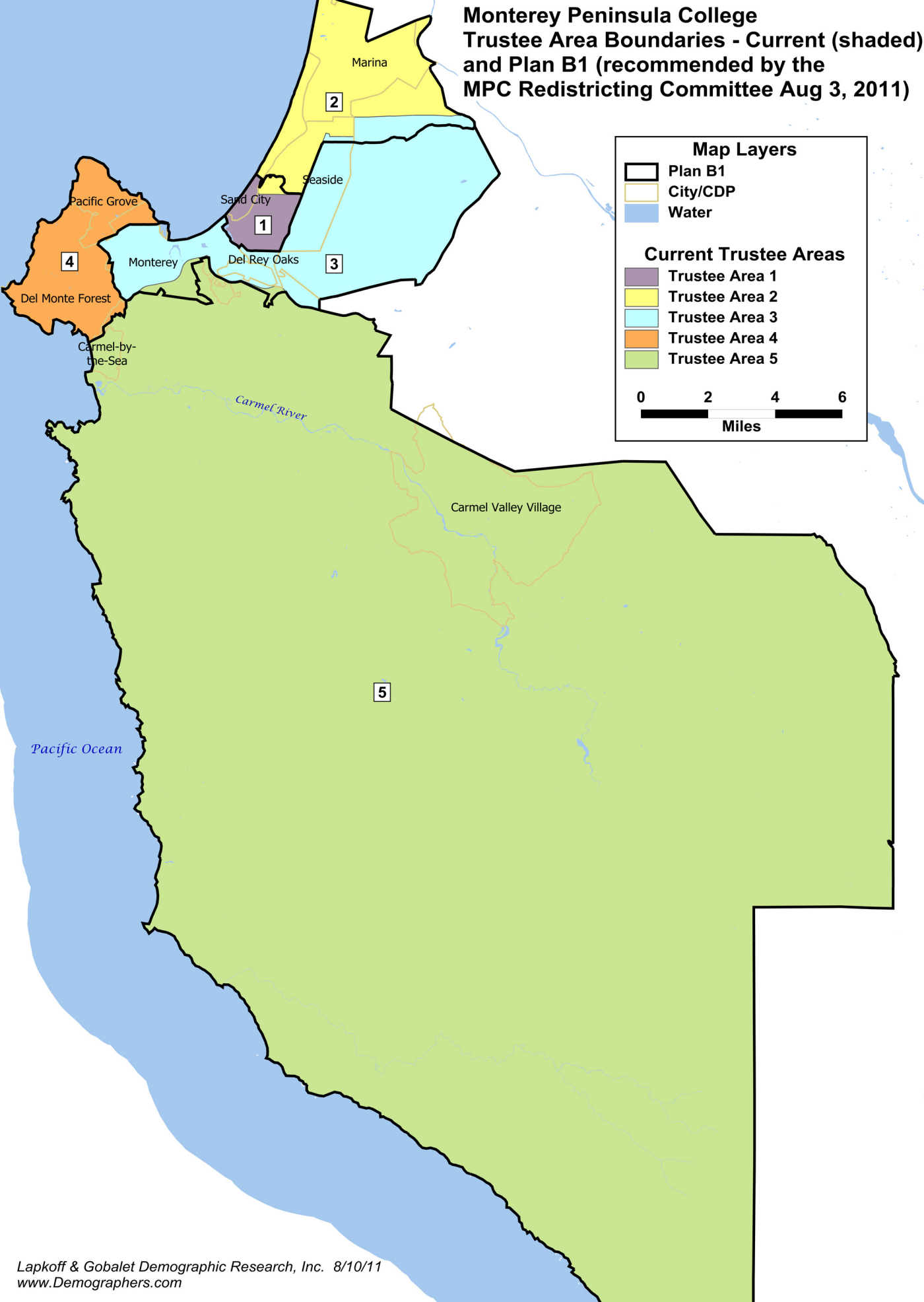
Plan C 7/31/2011

*VAP = Voting Age Population (aged 18+)

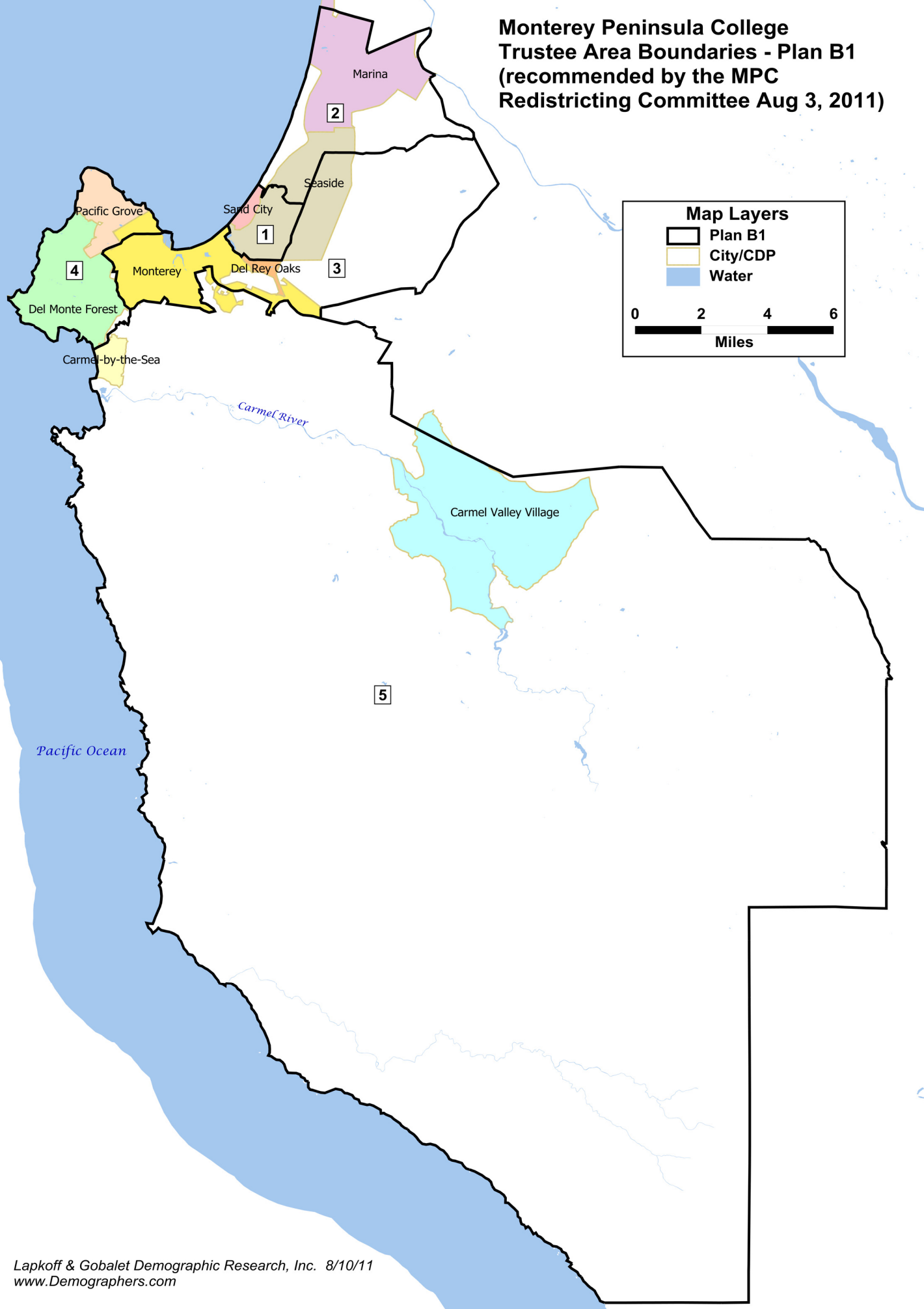
**CVAP = Citizen Voting Age Population

				Percent of trustee area's population that was:								
				Hispanic/Latino			Spanish Surname		Asian		African American	
				Total pop	VAP*	estimated **CVAP 2005-09	Registered 2010	Voters Nov 2010	Total pop	VAP*	Total pop	VAP*
Current Plan	Population	Deviation	Percent Deviation									
1	25,306	-335	-1.3%	51.1%	44.1%	20.6%	19.7%	15.9%	10.1%	11.2%	9.3%	10.2%
2	27,983	2,342	9.1%	25.2%	21.0%	15.2%	14.8%	13.3%	19.4%	20.6%	8.1%	7.8%
3	23,406	-2,235	-8.7%	15.6%	13.2%	9.6%	7.9%	6.6%	9.7%	9.5%	3.4%	3.2%
4	24,773	-868	-3.4%	9.6%	8.4%	7.0%	5.6%	4.9%	8.0%	7.3%	1.8%	1.6%
5	26,737	1,096	4.3%	7.3%	6.0%	3.5%	3.8%	3.2%	4.9%	4.3%	1.0%	0.7%
Total	128,205	4,577	17.9%	21.8%	17.9%	10.4%	9.1%	7.3%	10.6%	10.5%	4.8%	4.6%
Plan A 7/13/11												
1	26,981	1,340	5.2%	49.1%	42.4%	20.1%	19.2%	15.5%	10.5%	11.5%	9.2%	10.0%
2	26,308	667	2.6%	25.6%	21.3%	15.3%	15.0%	13.6%	19.5%	20.9%	8.1%	7.9%
3	25,520	-121	-0.5%	14.9%	12.8%	9.4%	7.8%	6.5%	9.9%	9.6%	3.6%	3.3%
4	24,773	-868	-3.4%	9.6%	8.4%	7.0%	5.6%	4.9%	8.0%	7.3%	1.8%	1.6%
5	24,623	-1018	-4.0%	7.3%	6.0%	3.5%	3.9%	3.2%	4.3%	3.9%	0.6%	0.5%
Total	128,205	2,358	9.2%	21.8%	17.9%	10.4%	9.1%	7.3%	10.6%	10.5%	4.8%	4.6%
Plan B 7/30/11												
1	26,647	1,006	3.9%	49.2%	42.6%	20.1%	19.4%	15.7%	10.6%	11.6%	9.3%	10.1%
2	26,642	1,001	3.9%	25.7%	21.5%	15.3%	14.9%	13.5%	19.3%	20.6%	8.0%	7.8%
3	25,584	-57	-0.2%	14.9%	12.8%	9.4%	7.8%	6.5%	9.9%	9.6%	3.6%	3.3%
4	24,773	-868	-3.4%	9.6%	8.4%	7.0%	5.6%	4.9%	8.0%	7.3%	1.8%	1.6%
5	24,559	-1,082	-4.2%	7.3%	6.0%	3.5%	3.9%	3.3%	4.3%	3.9%	0.6%	0.5%
Total	128,205	2,088	8.1%	21.8%	17.9%	10.4%	9.1%	7.3%	10.6%	10.5%	4.8%	4.6%
Plan B1 8/3/11 (Recommended)												
1	26,981	1,340	5.2%	49.1%	42.4%	20.1%	19.2%	15.5%	10.5%	11.5%	9.2%	10.0%
2	26,308	667	2.6%	25.6%	21.3%	15.3%	15.0%	13.6%	19.5%	20.9%	8.1%	7.9%
3	25,584	-57	-0.2%	14.9%	12.8%	9.4%	7.8%	6.5%	9.9%	9.6%	3.6%	3.3%
4	24,773	-868	-3.4%	9.6%	8.4%	7.0%	5.6%	4.9%	8.0%	7.3%	1.8%	1.6%
5	24,559	-1,082	-4.2%	7.3%	6.0%	3.5%	3.9%	3.3%	4.3%	3.9%	0.6%	0.5%
Total	128,205	2,422	9.4%	21.8%	17.9%	10.4%	9.1%	7.3%	10.6%	10.5%	4.8%	4.6%
Plan C 7/31/11												
1	26,647	1,006	3.9%	49.2%	42.6%	20.1%	19.4%	15.7%	10.6%	11.6%	9.3%	10.1%
2	26,642	1,001	3.9%	25.7%	21.5%	15.3%	14.9%	13.5%	19.3%	20.6%	8.0%	7.8%
3	26,171	530	2.1%	14.5%	12.4%	8.9%	7.4%	6.0%	9.9%	9.7%	3.1%	2.8%
4	24,844	-797	-3.1%	10.0%	8.8%	7.4%	5.9%	5.3%	7.6%	7.0%	2.2%	2.0%
6	23,901	-1,740	-6.8%	7.1%	5.9%	3.4%	3.6%	3.1%	4.6%	3.9%	0.6%	0.5%
Total	128,205	2,746	10.7%	21.8%	17.9%	10.4%	9.1%	7.3%	10.6%	10.5%	4.8%	4.6%
Plan Comparisons												
Current Plan & Plan A Differences (retrogression assessment):												
1	1,675			-2.0%	-1.7%	-0.5%	-0.5%	-0.4%	0.4%	0.3%	-0.1%	-0.2%
2	-1,675			0.4%	0.3%	0.1%	0.2%	0.2%	0.1%	0.2%	0.0%	0.1%
3	2,114			-0.7%	-0.4%	-0.2%	-0.1%	-0.1%	0.2%	0.1%	0.2%	0.1%
4	0			0.0%	0.0%	0.0%	0.0%	0.0%	0.0%	0.0%	0.0%	0.0%
5	-2,114			0.0%	0.0%	0.0%	0.0%	0.0%	-0.6%	-0.4%	-0.4%	-0.3%
Current Plan & Plan B Differences (retrogression assessment):												
1	1,341			-1.8%	-1.6%	-0.5%	-0.4%	-0.3%	0.5%	0.4%	0.0%	-0.2%
2	-1,341			0.5%	0.5%	0.1%	0.1%	0.1%	-0.1%	0.0%	0.0%	0.0%
3	2,178			-0.7%	-0.4%	-0.3%	-0.1%	-0.1%	0.2%	0.1%	0.2%	0.1%
4	0			0.0%	0.0%	0.0%	0.0%	0.0%	0.0%	0.0%	0.0%	0.0%
5	-2,178			0.0%	0.0%	0.0%	0.0%	0.0%	-0.6%	-0.4%	-0.4%	-0.3%
Current Plan & Plan B1 Differences (retrogression assessment):												
1	0			0.0%	0.0%	0.0%	0.0%	0.0%	0.0%	0.0%	0.0%	0.0%
2	0			0.0%	0.0%	0.0%	0.0%	0.0%	0.0%	0.0%	0.0%	0.0%
3	0			0.0%	0.0%	0.0%	0.0%	0.0%	0.0%	0.0%	0.0%	0.0%
4	0			0.0%	0.0%	0.0%	0.0%	0.0%	0.0%	0.0%	0.0%	0.0%
5	587			-0.4%	-0.4%	-0.5%	-0.4%	-0.5%	0.1%	0.1%	-0.5%	-0.5%
Current Plan & Plan C Differences (retrogression assessment):												
1	1,341			-1.8%	-1.6%	-0.5%	-0.4%	-0.3%	0.5%	0.4%	0.0%	-0.2%
2	-1,341			0.5%	0.5%	0.1%	0.1%	0.1%	-0.1%	0.0%	0.0%	0.0%
3	2,765			-1.1%	-0.8%	-0.8%	-0.5%	-0.6%	0.2%	0.1%	-0.3%	-0.4%
4	71			0.4%	0.4%	0.4%	0.3%	0.4%	-0.5%	-0.2%	0.4%	0.4%
5	-2,836			-0.2%	-0.1%	-0.1%	-0.2%	-0.1%	-0.3%	-0.4%	-0.4%	-0.2%

**Monterey Peninsula College
Trustee Area Boundaries - Current (shaded)
and Plan B1 (recommended by the
MPC Redistricting Committee Aug 3, 2011)**



**Monterey Peninsula College
Trustee Area Boundaries - Plan B1
(recommended by the MPC
Redistricting Committee Aug 3, 2011)**




Map Layers

- Plan B1
- City/CDP
- Water

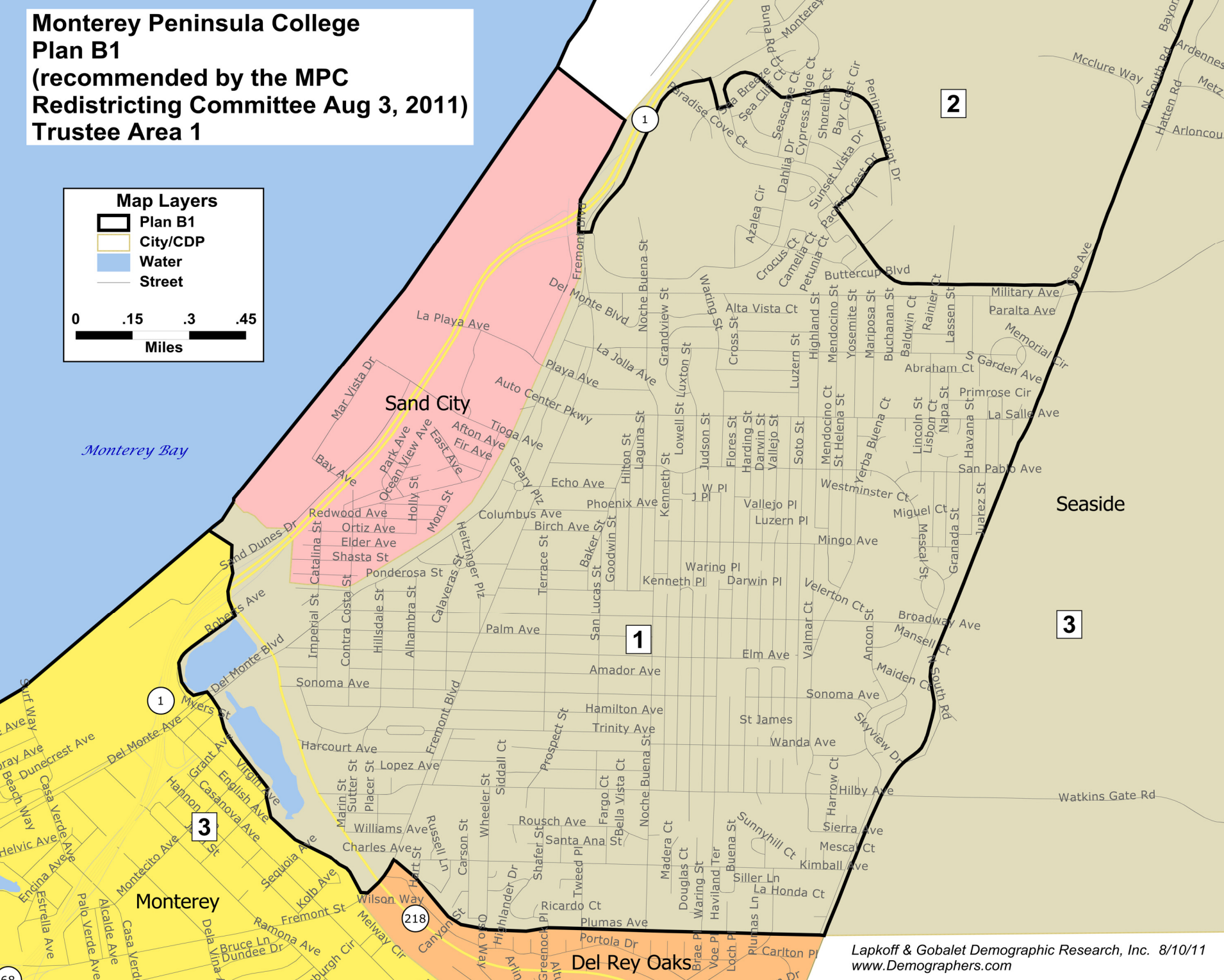
0 2 4 6
Miles

**Monterey Peninsula College
Plan B1
(recommended by the MPC
Redistricting Committee Aug 3, 2011)
Trustee Area 1**

Map Layers

-  Plan B1
-  City/CDP
-  Water
-  Street

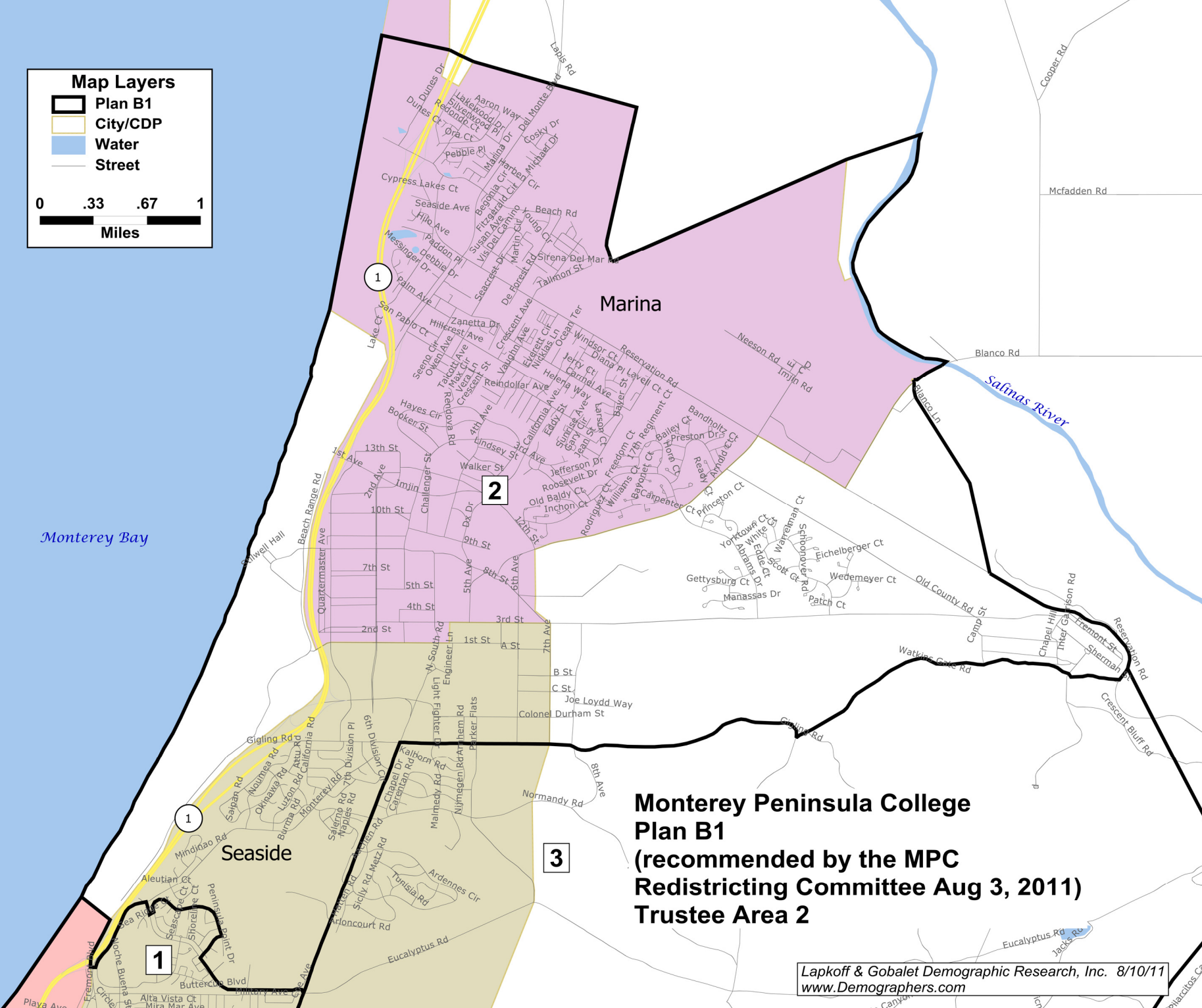
0 .15 .3 .45
Miles



Map Layers

-  Plan B1
-  City/CDP
-  Water
-  Street

0 .33 .67 1
Miles



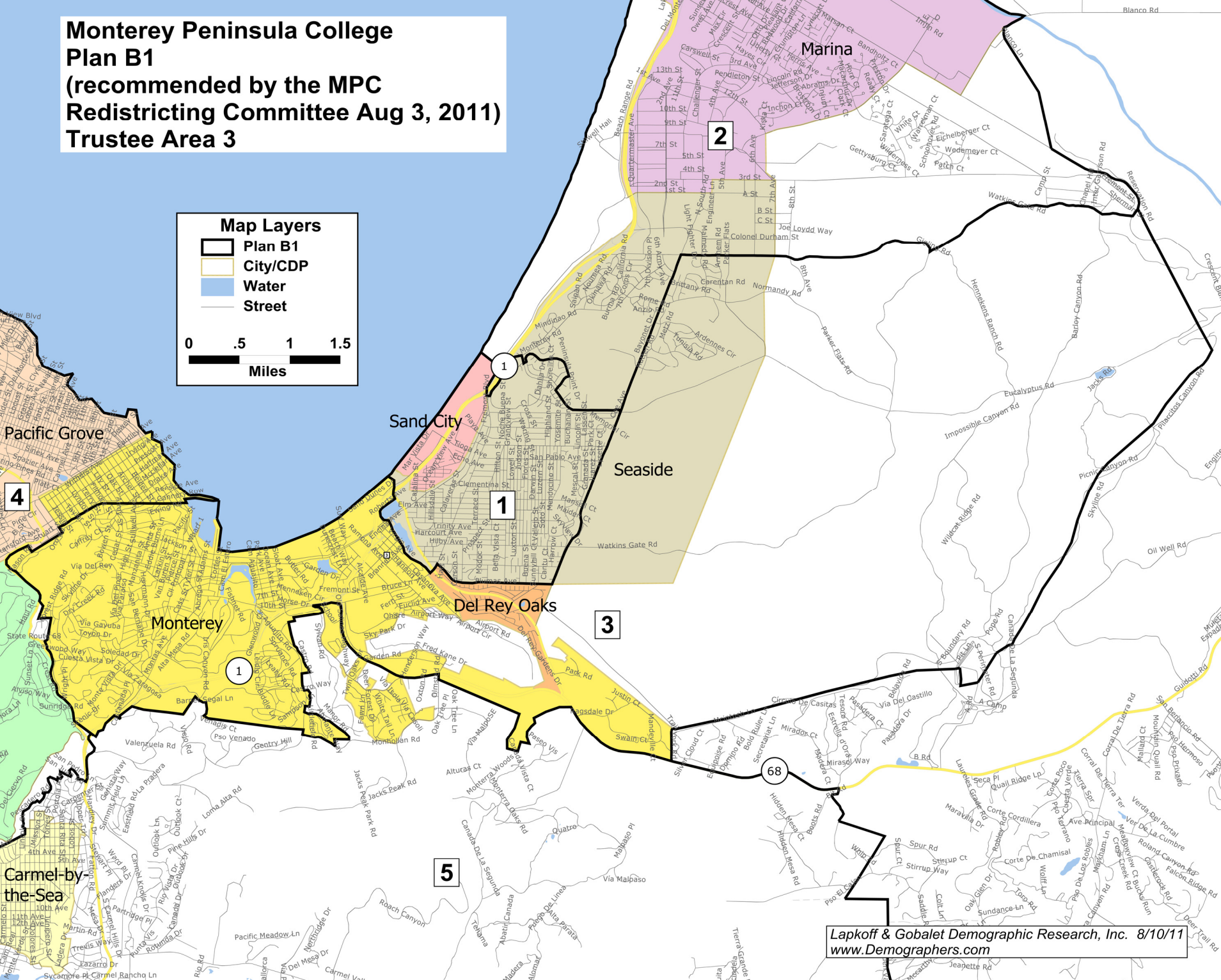
**Monterey Peninsula College
Plan B1
(recommended by the MPC
Redistricting Committee Aug 3, 2011)
Trustee Area 2**

**Monterey Peninsula College
Plan B1
(recommended by the MPC
Redistricting Committee Aug 3, 2011)
Trustee Area 3**

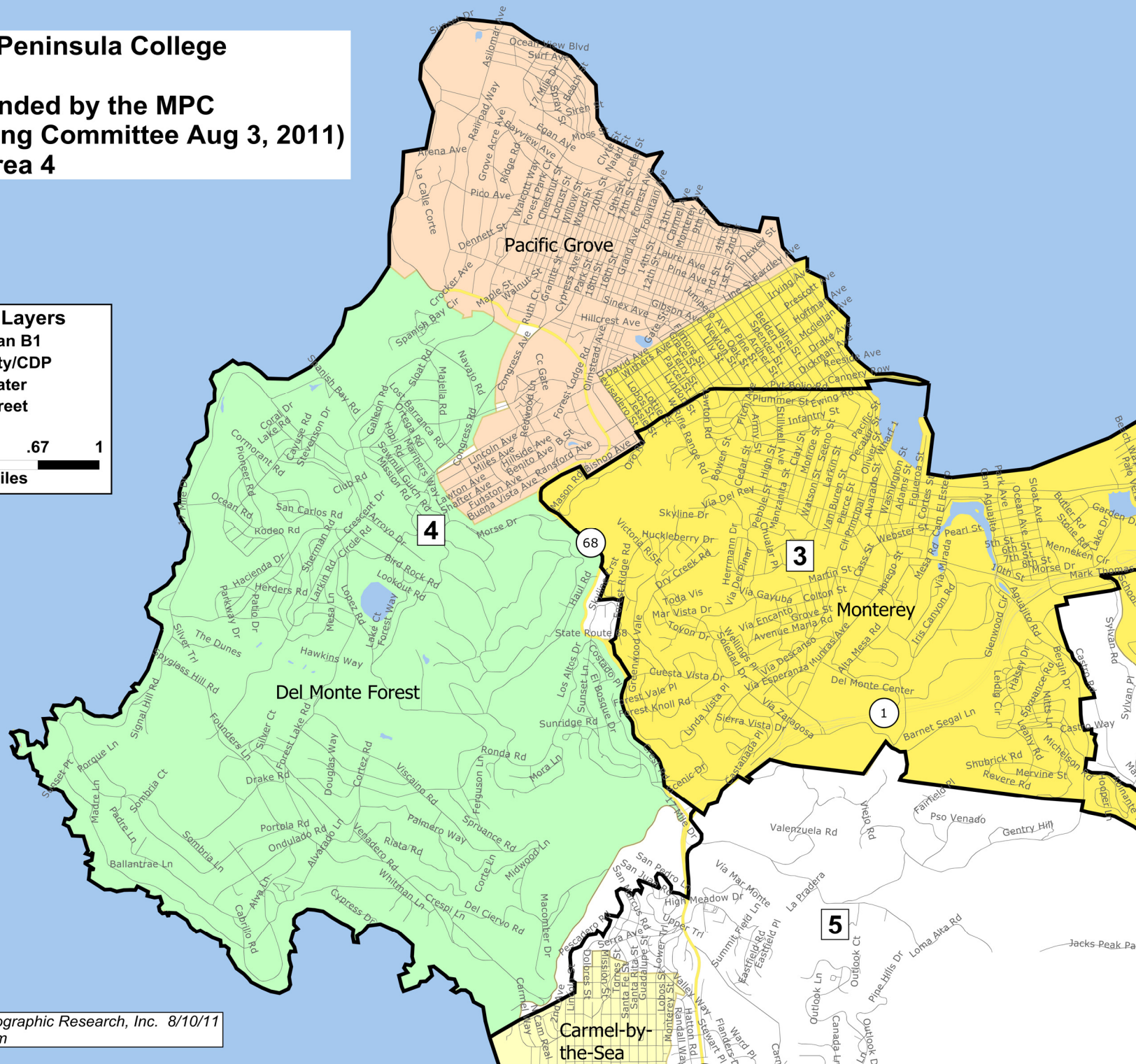
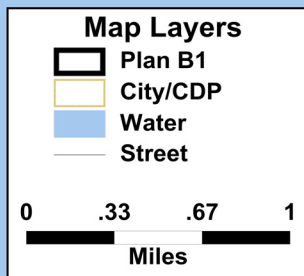
Map Layers

-  Plan B1
-  City/CDP
-  Water
-  Street

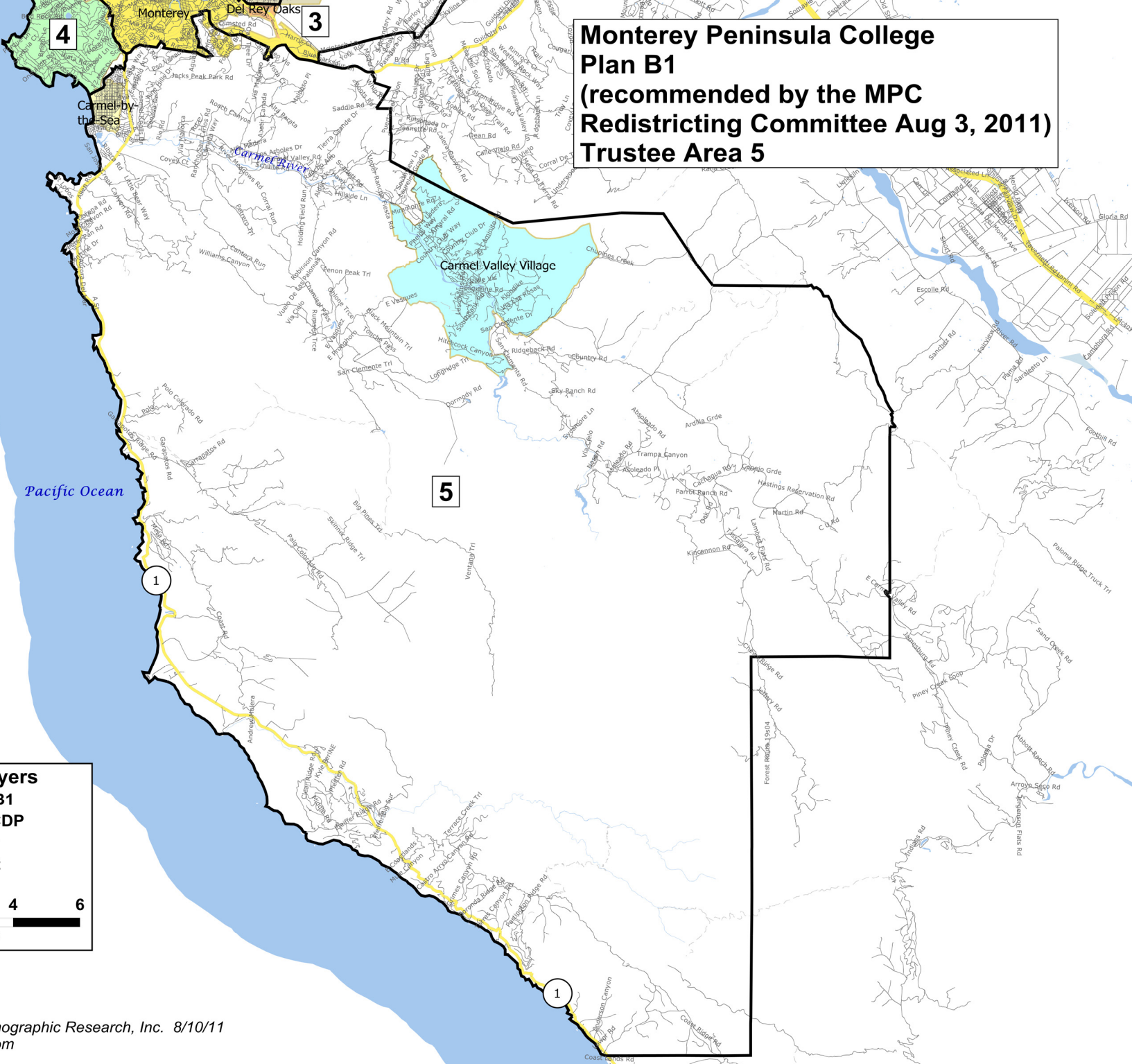
0 .5 1 1.5
Miles





**Monterey Peninsula College
Plan B1
(recommended by the MPC
Redistricting Committee Aug 3, 2011)
Trustee Area 4**



**Monterey Peninsula College
Plan B1
(recommended by the MPC
Redistricting Committee Aug 3, 2011)
Trustee Area 5**

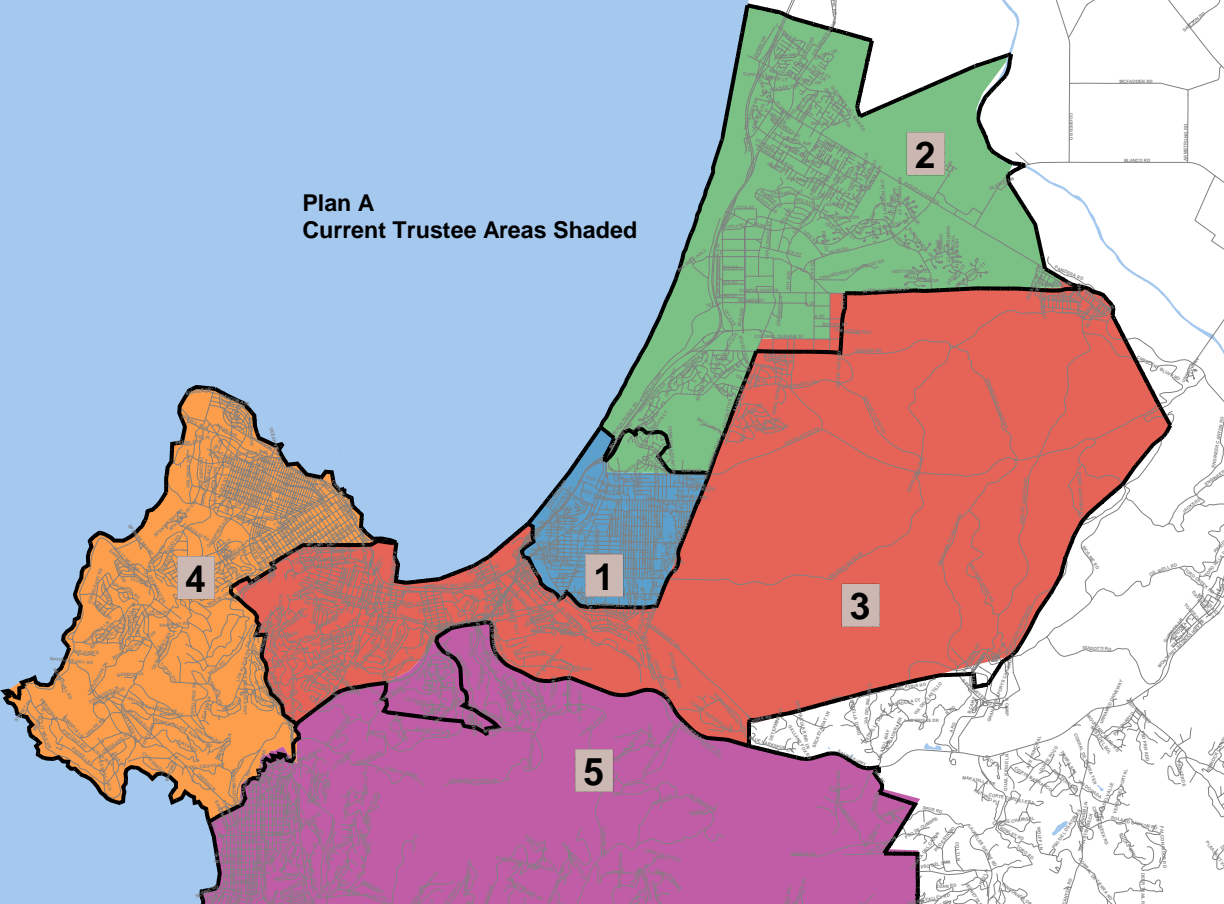


Map Layers

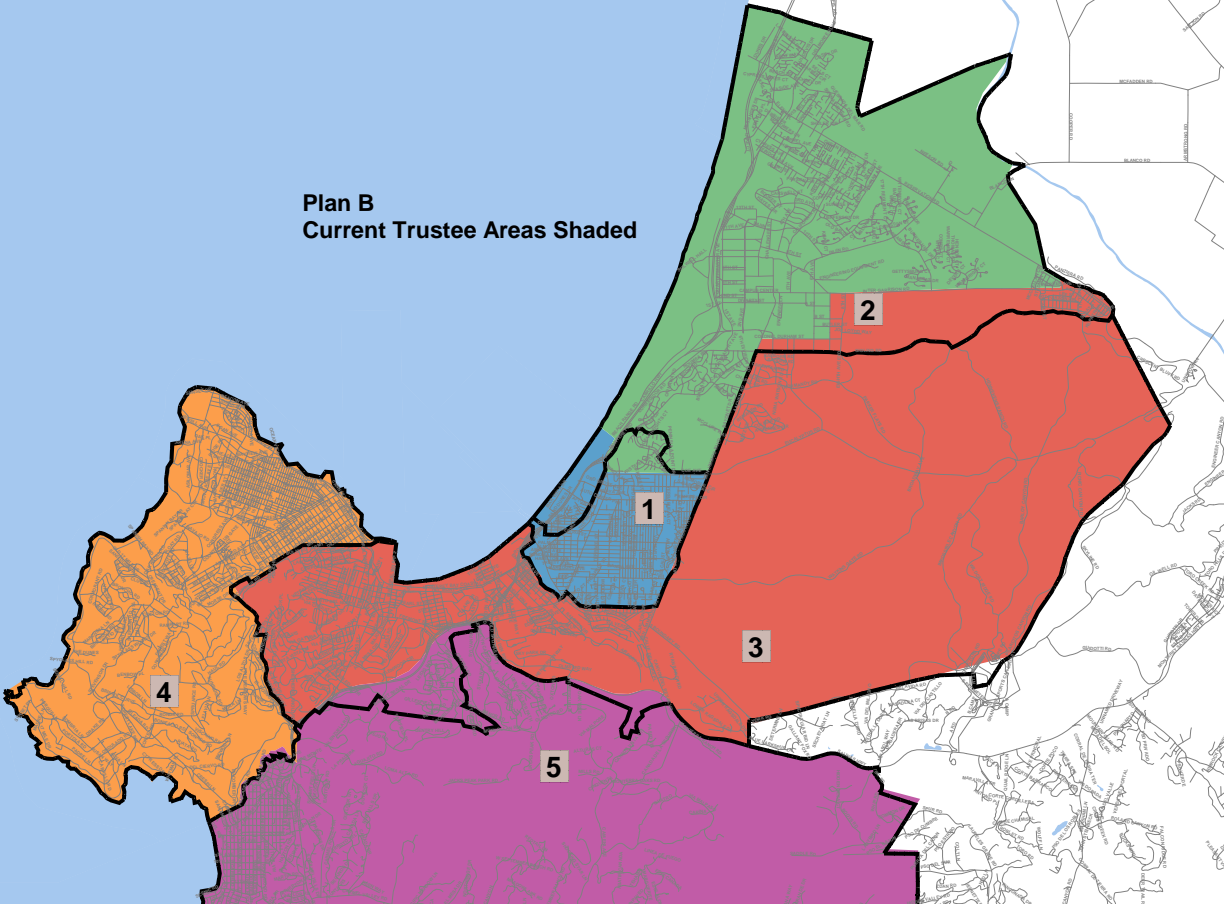
-  Plan B1
-  City/CDP
-  Water
-  Street

0 2 4 6
Miles

**Plan A
Current Trustee Areas Shaded**



**Plan B
Current Trustee Areas Shaded**



**Plan C
Current Trustee Areas Shaded**

