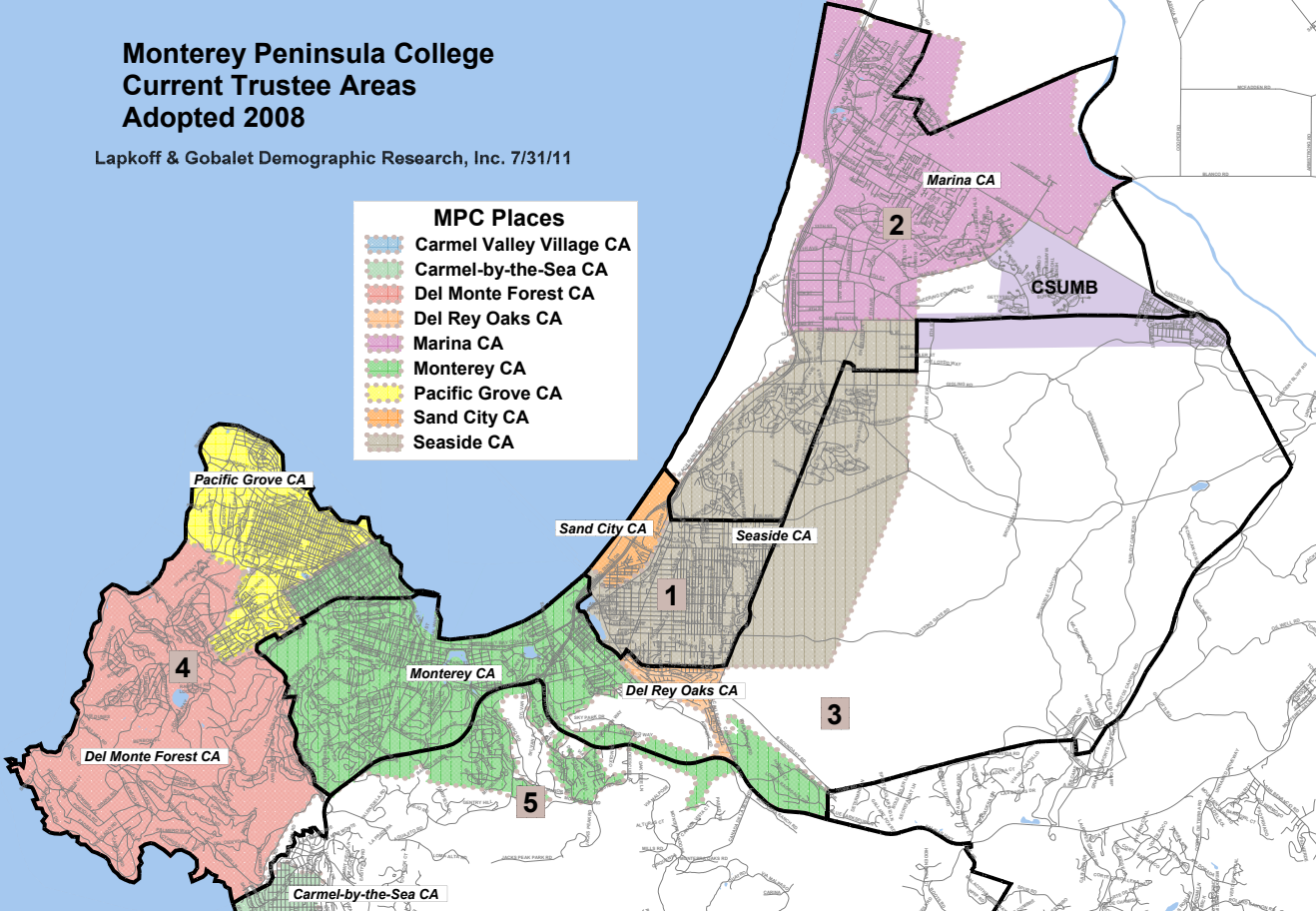


# Monterey Peninsula College Current Trustee Areas Adopted 2008

Lapkoff & Gobalet Demographic Research, Inc. 7/31/11

**MPC Places**

- Carmel Valley Village CA
- Carmel-by-the-Sea CA
- Del Monte Forest CA
- Del Rey Oaks CA
- Marina CA
- Monterey CA
- Pacific Grove CA
- Sand City CA
- Seaside CA

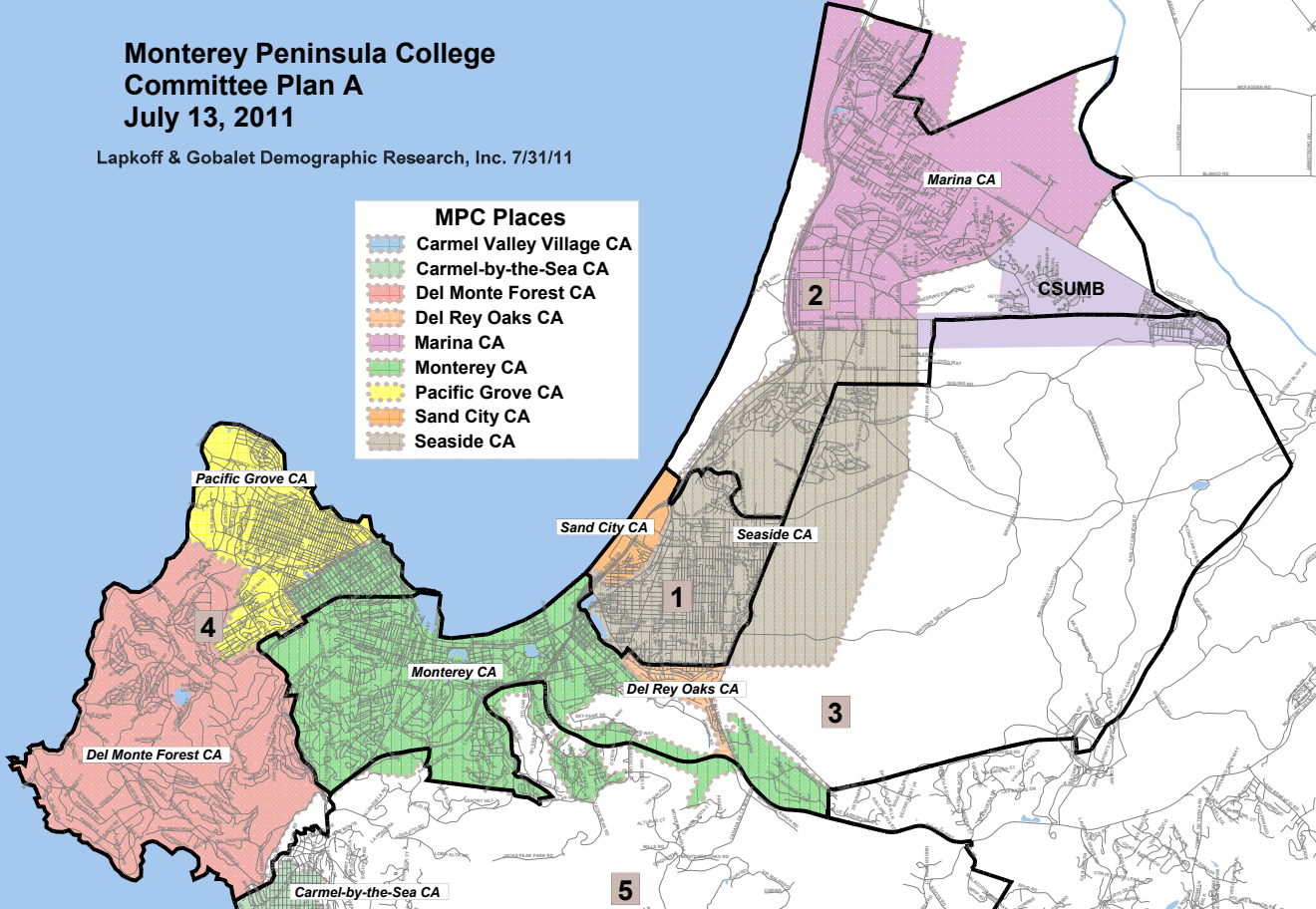


# Monterey Peninsula College Committee Plan A July 13, 2011

Lapkoff & Gobalet Demographic Research, Inc. 7/31/11

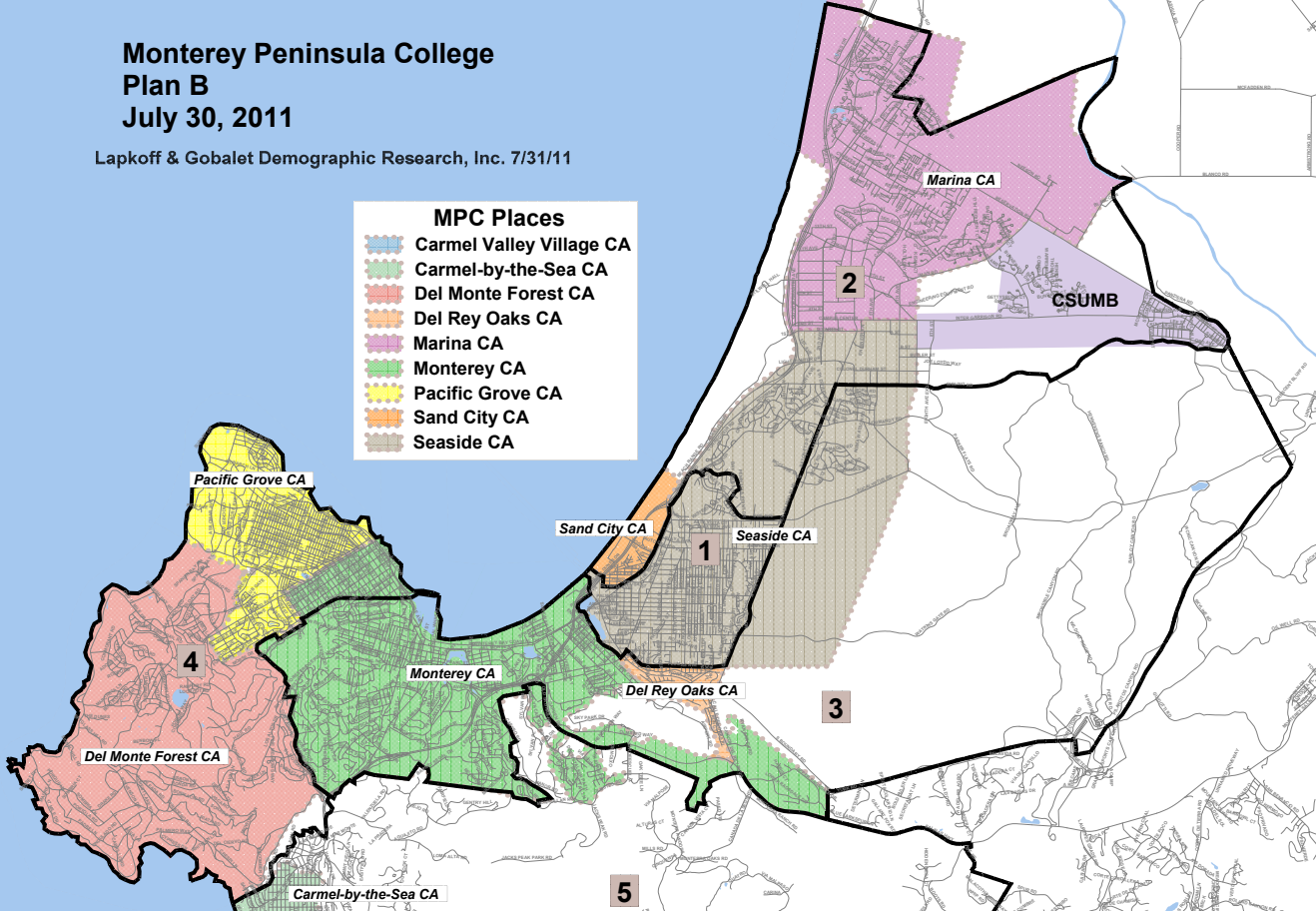
**MPC Places**

- Carmel Valley Village CA
- Carmel-by-the-Sea CA
- Del Monte Forest CA
- Del Rey Oaks CA
- Marina CA
- Monterey CA
- Pacific Grove CA
- Sand City CA
- Seaside CA



# Monterey Peninsula College Plan B July 30, 2011

Lapkoff & Gobalet Demographic Research, Inc. 7/31/11

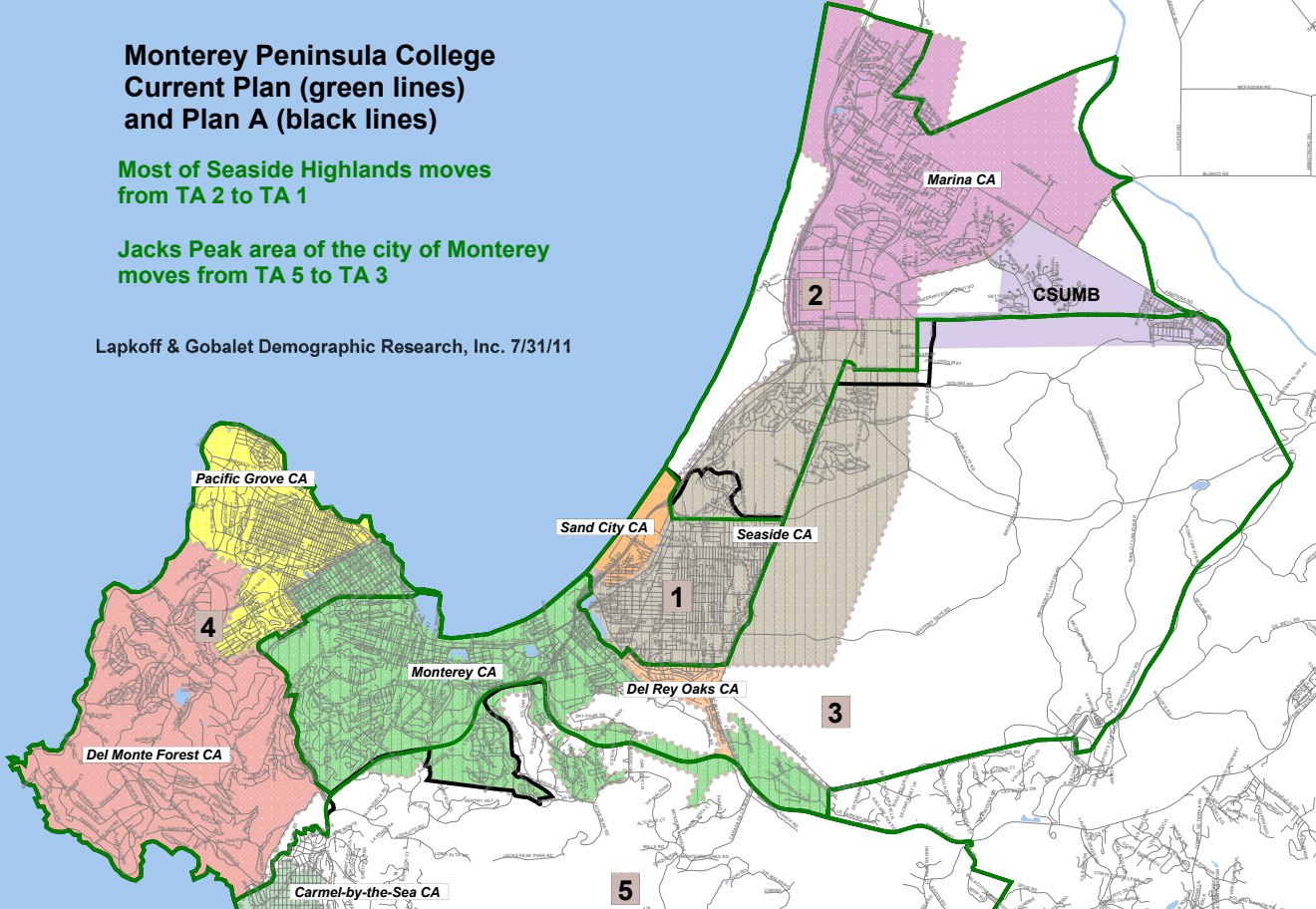


# Monterey Peninsula College Current Plan (green lines) and Plan A (black lines)

Most of Seaside Highlands moves  
from TA 2 to TA 1

Jacks Peak area of the city of Monterey  
moves from TA 5 to TA 3

Lapkoff & Gobalet Demographic Research, Inc. 7/31/11



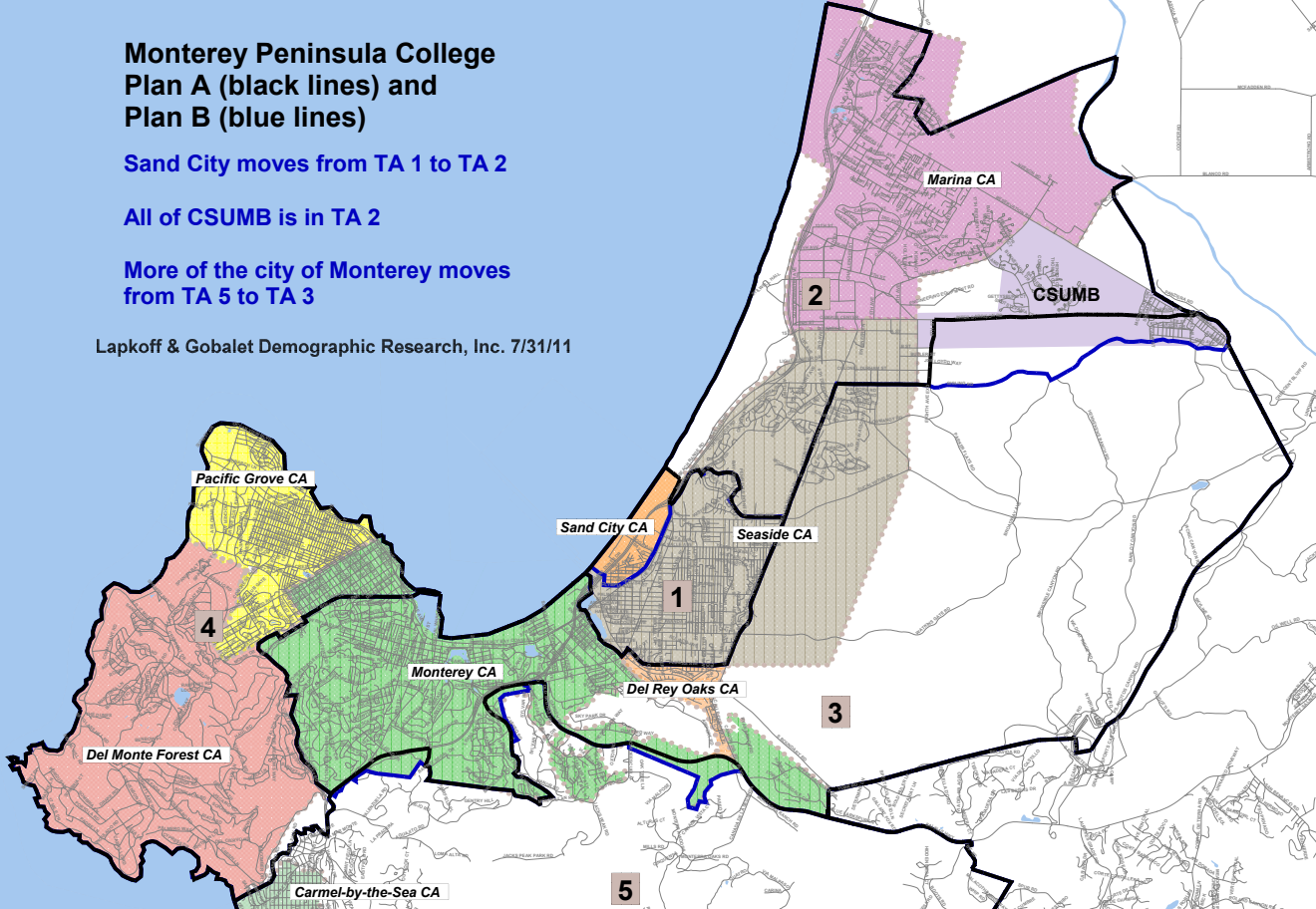
# Monterey Peninsula College Plan A (black lines) and Plan B (blue lines)

Sand City moves from TA 1 to TA 2

All of CSUMB is in TA 2

More of the city of Monterey moves  
from TA 5 to TA 3

Lapkoff & Gobalet Demographic Research, Inc. 7/31/11

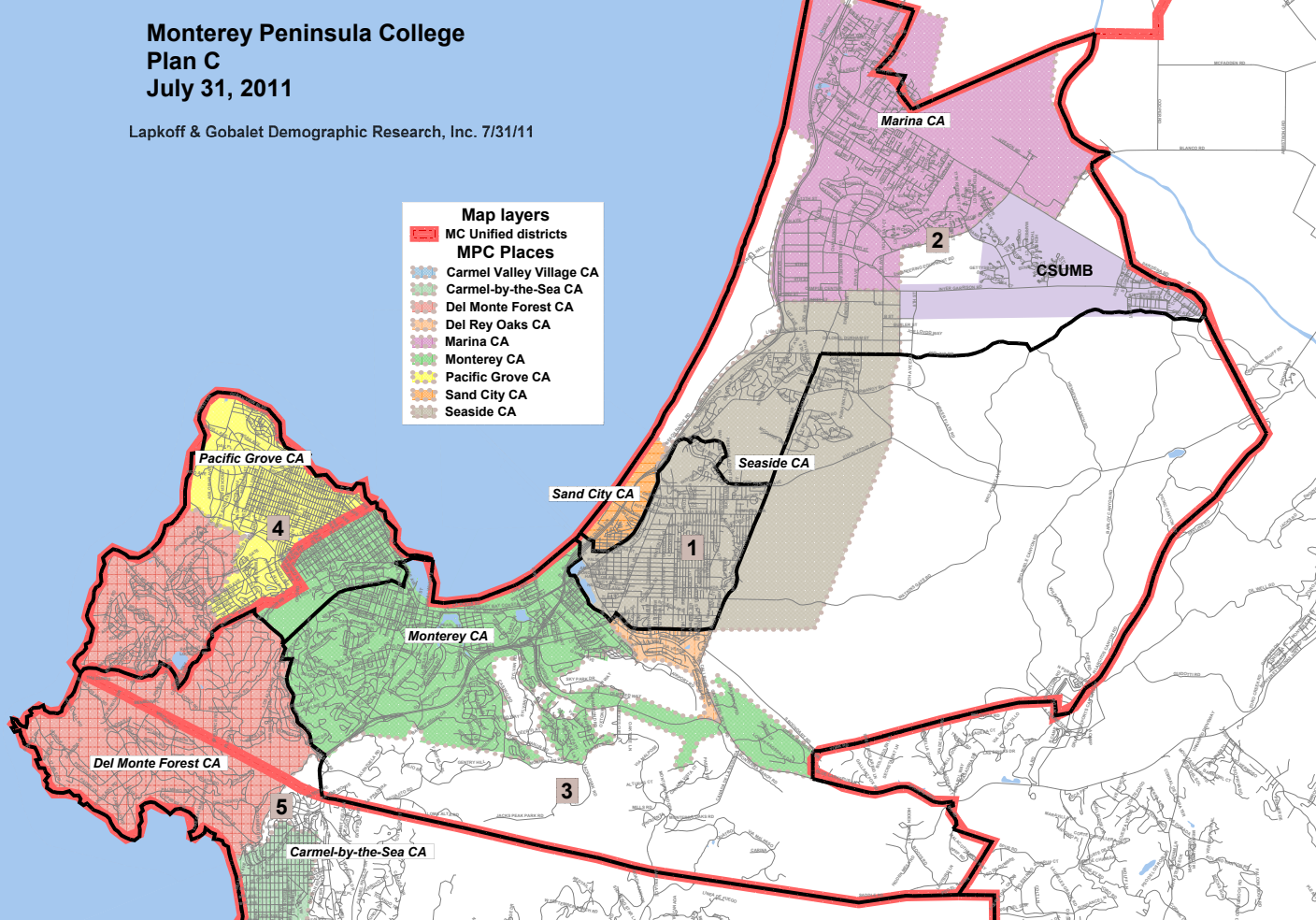


# Monterey Peninsula College

## Plan C

July 31, 2011

Lapkoff & Gobalet Demographic Research, Inc. 7/31/11



**Monterey Peninsula College Trustee Area Plan Comparisons**

**Current Plan**  
**Committee Plan (Plan A)** 7/13/2011  
**Plan B** 7/30/2011  
**Plan C** 7/31/2011

\*VAP = Voting Age Population (aged 18+)  
 \*\*CVAP = Citizen Voting Age Population

				Percent of council district's population that was:									
				Hispanic/Latino			Spanish Surname		Asian		African American		
				Total pop	VAP*	estimated **CVAP 2005-09	Registered 2010	Voters Nov 2010	Total pop	VAP*	Total pop	VAP*	
<b>Current Plan</b>	Population	Deviation	Percent Deviation										
1	25,306	-217	-0.9%	51.1%	44.1%	20.6%	19.7%	15.9%	10.1%	11.2%	9.3%	10.2%	
2	27,394	1,871	7.3%	25.4%	21.3%	15.3%	14.9%	13.5%	19.1%	20.3%	8.2%	7.9%	
3	23,406	-2,117	-8.3%	15.6%	13.2%	9.6%	7.9%	6.6%	9.7%	9.5%	3.4%	3.2%	
4	24,773	-750	-2.9%	9.6%	8.4%	7.0%	5.6%	4.9%	8.0%	7.3%	1.8%	1.6%	
5	26,737	1,214	4.8%	7.3%	6.0%	3.5%	3.8%	3.2%	4.9%	4.3%	1.0%	0.7%	
<b>Total</b>	<b>127,616</b>	<b>3,988</b>	<b>15.6%</b>	<b>21.8%</b>	<b>18.0%</b>	<b>10.4%</b>	<b>9.1%</b>	<b>7.3%</b>	<b>10.5%</b>	<b>10.4%</b>	<b>4.8%</b>	<b>4.6%</b>	
<b>Committee Plan A 7/13/11</b>													
1	26,981	1,458	5.7%	49.1%	42.4%	20.1%	19.2%	15.5%	10.5%	11.5%	9.2%	10.0%	
2	25,719	196	0.8%	25.9%	21.6%	15.4%	15.1%	13.8%	19.2%	20.5%	8.2%	8.0%	
3	25,520	-3	0.0%	14.9%	12.8%	9.4%	7.8%	6.5%	9.9%	9.6%	3.6%	3.3%	
4	24,773	-750	-2.9%	9.6%	8.4%	7.0%	5.6%	4.9%	8.0%	7.3%	1.8%	1.6%	
5	24,623	-900	-3.5%	7.3%	6.0%	3.5%	3.9%	3.2%	4.3%	3.9%	0.6%	0.5%	
<b>Total</b>	<b>127,616</b>	<b>2,358</b>	<b>9.2%</b>	<b>21.8%</b>	<b>18.0%</b>	<b>10.4%</b>	<b>9.1%</b>	<b>7.3%</b>	<b>10.5%</b>	<b>10.4%</b>	<b>4.8%</b>	<b>4.6%</b>	
<b>Plan B 7/30/11</b>													
1	26,647	1,124	4.4%	49.2%	42.6%	20.1%	19.4%	15.7%	10.6%	11.6%	9.3%	10.1%	
2	26,053	530	2.1%	26.0%	21.8%	15.5%	15.0%	13.7%	19.0%	20.3%	8.2%	8.0%	
3	25,584	61	0.2%	14.9%	12.8%	9.4%	7.8%	6.5%	9.9%	9.6%	3.6%	3.3%	
4	24,773	-750	-2.9%	9.6%	8.4%	7.0%	5.6%	4.9%	8.0%	7.3%	1.8%	1.6%	
5	24,559	-964	-3.8%	7.3%	6.0%	3.5%	3.9%	3.3%	4.3%	3.9%	0.6%	0.5%	
<b>Total</b>	<b>127,616</b>	<b>2,088</b>	<b>8.2%</b>	<b>21.8%</b>	<b>18.0%</b>	<b>10.4%</b>	<b>9.1%</b>	<b>7.3%</b>	<b>10.5%</b>	<b>10.4%</b>	<b>4.8%</b>	<b>4.6%</b>	
<b>Plan C 7/31/11</b>													
1	26,647	1,124	4.4%	49.2%	42.6%	20.1%	19.4%	15.7%	10.6%	11.6%	9.3%	10.1%	
2	26,053	529.8	2.1%	26.0%	21.8%	15.5%	15.0%	13.7%	19.0%	20.3%	8.2%	8.0%	
3	26,171	647.8	2.5%	14.5%	12.4%	8.9%	7.4%	6.0%	9.9%	9.7%	3.1%	2.8%	
4	24,844	-679.2	-2.7%	10.0%	8.8%	7.4%	5.9%	5.3%	7.6%	7.0%	2.2%	2.0%	
6	23,901	-1622.2	-6.4%	7.1%	5.9%	3.4%	3.6%	3.1%	4.6%	3.9%	0.6%	0.5%	
<b>Total</b>	<b>127,616</b>	<b>2,746</b>	<b>10.8%</b>	<b>21.8%</b>	<b>18.0%</b>	<b>10.4%</b>	<b>9.1%</b>	<b>7.3%</b>	<b>10.5%</b>	<b>10.4%</b>	<b>4.8%</b>	<b>4.6%</b>	
<b>Plan Comparisons</b>													
<b>Current Plan &amp; Plan A Differences (regression assessment):</b>													
1	1,675			-2.0%	-1.7%	-0.5%	-0.5%	-0.4%	0.4%	0.3%	-0.1%	-0.2%	
2	-1,675			0.4%	0.3%	0.1%	0.2%	0.3%	0.1%	0.2%	0.0%	0.1%	
3	2,114			-0.7%	-0.4%	-0.2%	-0.1%	-0.1%	0.2%	0.1%	0.2%	0.1%	
4	0			0.0%	0.0%	0.0%	0.0%	0.0%	0.0%	0.0%	0.0%	0.0%	
5	-2,114			0.0%	0.0%	0.0%	0.0%	0.0%	-0.6%	-0.4%	-0.4%	-0.3%	
<b>Current Plan &amp; Plan B Differences (regression assessment):</b>													
1	1,341			-1.8%	-1.6%	-0.5%	-0.4%	-0.3%	0.5%	0.4%	0.0%	-0.2%	
2	-1,341			0.6%	0.5%	0.1%	0.1%	0.2%	-0.1%	0.0%	0.0%	0.0%	
3	2,178			-0.7%	-0.4%	-0.3%	-0.1%	-0.1%	0.2%	0.1%	0.2%	0.1%	
4	0			0.0%	0.0%	0.0%	0.0%	0.0%	0.0%	0.0%	0.0%	0.0%	
5	-2,178			0.0%	0.0%	0.0%	0.0%	0.0%	-0.6%	-0.4%	-0.4%	-0.3%	
<b>Current Plan &amp; Plan C Differences (regression assessment):</b>													
1	1,341			-1.8%	-1.6%	-0.5%	-0.4%	-0.3%	0.5%	0.4%	0.0%	-0.2%	
2	-1,341			0.6%	0.5%	0.1%	0.1%	0.2%	-0.1%	0.0%	0.0%	0.0%	
3	2,765			-1.1%	-0.8%	-0.8%	-0.5%	-0.6%	0.2%	0.1%	-0.3%	-0.4%	
4	71			0.4%	0.4%	0.4%	0.3%	0.4%	-0.5%	-0.2%	0.4%	0.4%	
5	-2,836			-0.2%	-0.1%	-0.1%	-0.2%	-0.1%	-0.3%	-0.4%	-0.4%	-0.2%	