



# CALIFORNIA COMMUNITY COLLEGES

## CHANCELLOR'S OFFICE

### PRESS RELEASE

October 7, 2011

Contact: Paige Marlatt Dorr

Office: 916.327.5356

Cell: 916.601.8005

Office E-mail: [pdorr@cccco.edu](mailto:pdorr@cccco.edu)

Mobile E-mail: [pmarlatt@comcast.net](mailto:pmarlatt@comcast.net)

### **California Community Colleges Chancellor Jack Scott says Draft Recommendations of Student Success Task Force Will Improve Completion Rates**

*Comprehensive plan balances priorities to better respond to the needs of students and the economy*

SACRAMENTO, Calif. – California Community Colleges Chancellor Jack Scott today praised the newly released draft recommendations of the Student Success Task Force, saying that it provides a workable action plan to improve degree and certificate attainment and transfer rates of the 2.6 million students enrolled in the system's 112 colleges.

"Our system can take bold steps to ensure more students complete certificates, degrees and transfer to four-year universities. This must be done while protecting access for the diverse group of Californians who come to our campuses seeking to improve their lives," said Chancellor Jack Scott. "The task force has done an excellent job of developing recommendations to make our colleges responsive to students' needs and the state's economy, which is increasingly demanding college-educated workers."

The task force was convened as a result of [Senate Bill 1143 \(Liu\)](#), which required the California Community Colleges Board of Governors to establish a panel to examine best practices for promoting student success and then to adopt a plan for improving degree and completion rates within the California Community Colleges.

Scott said he looks forward to the discussion that will occur in the coming weeks as public feedback is gathered on the recommendations, which were developed over 10 months of study and deliberations. "Ensuring access to higher education is only half the equation," Scott said. "Equally important is granting students the best opportunity to succeed upon entering the classroom."

The recommendations call for development and implementation of tools that do a better job of determining the skill level and needs of entering students, as well as innovation that will lead to students addressing basic skills education earlier in their academic careers.

Other draft recommendations would require:

- Students to decide on their course of study earlier so they can reach their goals on time, which will save money and get them into the workforce faster. It will also free up space for the system to serve more students.

- Colleges to give priority enrollment to students who make progress in meeting their identified goals and to adjust course offerings according to the needs of students based on those goals.
- Expand the use of technology, especially as it relates to helping students access and plan their educational goals, with tools such as smart phones.
- Changes to promote flexibility that will allow local colleges to pursue student success strategies tailored to the needs of their students.
- Colleges to use scorecards to publically report on their progress to improve student success.

“The academic success of our students is our foremost objective,” said board of governors member Peter MacDougall, who chaired the task force. “The report’s recommendations, taken together and applied by talented faculty and staff on individual campuses, will increase the number of students who succeed in transfer and career readiness programs – the core mission of our community colleges. Enhancing collegiate skills programs and having students complete their plans in a timelier manner will help California narrow its education skills gap and prepare workers to compete in the current and emerging economies.”

The task force will meet again Nov. 9 to discuss public input received in meetings and online. After reviewing the feedback, they will make adjustments to the plan if necessary. The proposal will then be forwarded to the California Community Colleges Board of Governors for consideration at its January 2012 meeting. The final report of recommendations will be presented to the Legislature in March 2012.

The task force is made up of 20 members. They are a broad representation of stakeholders, including students, faculty, staff, researchers, college presidents and district chancellors, local trustees and third-party advocates. Before the plan is finalized, Californians are invited to take part in the reform effort by reading the draft recommendations, submitting comments, participating in upcoming town hall meetings, and logging on to online discussions. The draft recommendations and more information can be found at <http://californiacommunitycolleges.cccco.edu/SSTF.aspx>.

*The California Community Colleges is the largest system of higher education in the nation. It is composed of 72 districts and 112 colleges serving 2.6 million students per year. Community colleges supply workforce training, basic skills courses in English and math, and prepare students for transfer to four-year colleges and universities. The Chancellor’s Office provides leadership, advocacy and support under the direction of the Board of Governors of the California Community Colleges.*

###

*Editor’s Note: To see the draft recommendations, click [here](http://bit.ly/ndB2W1). (<http://bit.ly/ndB2W1>)*

**Carla Robinson**

---

**From:** Board of Trustees Presidents <BOT-ALL@LISTSERV.CCCCO.EDU> on behalf of Chancellor's Office of Communications <Communications@CCCCO.EDU>  
**Sent:** Wednesday, October 12, 2011 10:00 AM  
**To:** BOT-ALL@LISTSERV.CCCCO.EDU  
**Subject:** PRESS RELEASE: California Community Colleges Chancellor's Office Announces \$6.9 Million Grant to Address Mental Health Needs of Students  
**Attachments:** California Community Colleges Receives Mental Health Grant - FINAL (10-11-11).doc

<http://californiacommunitycolleges.cccco.edu/Newsroom.aspx>



## CALIFORNIA COMMUNITY COLLEGES CHANCELLOR'S OFFICE

**PRESS  
RELEASE  
2011**

**October 11,**

Contact: Paige Marlatt Dorr  
Office: 916.327.5356  
Cell: 916.601.8005  
Office E-mail: [pdorr@cccco.edu](mailto:pdorr@cccco.edu)  
Mobile E-mail: [pmarlatt@comcast.net](mailto:pmarlatt@comcast.net)

### **California Community Colleges Chancellor's Office Announces \$6.9 Million Grant to Address Mental Health Needs of Students**

*Chancellor Jack Scott applauds award, says money will focus on prevention and saving lives*

SACRAMENTO, Calif. - California Community Colleges Chancellor Jack Scott today announced that the California Mental Health Services Authority has awarded a \$6.9 million grant to the college system to be used over a three-year period for faculty and staff training on student mental health issues, suicide prevention and peer-to-peer services.

"Our most recent data shows that stress, anxiety and depression are among the top factors that affect student academic performance," said Chancellor Scott, who advocates for the state's 2.6 million students across a 112-college system.

"This grant comes at a critical time as students are under even more stress because of economic troubles. Almost 50 percent of students reported feeling very sad, very lonely and hopeless and more than a third reported that they were so depressed it was difficult to function."

Another 8 percent of student respondents reported that they had considered suicide and almost 3 percent had attempted suicide.

The California Community Colleges Student Mental Health Program will provide funding to 12 colleges for training, technical services and peer-to-peer assistance. The program also will result in online training resources that are expected to be available to all community college faculty and staff to help them respond appropriately to students who may exhibit signs of mental distress. A focus on student veterans will be an important program element, and community colleges will collaborate with the California State University and University of California on these projects.

Mary and Victor Ojakian, who lost a son to suicide while he was a college student, applauded the grant. In December 2004, their son, Adam, was a senior at University of California, when he took his own life in his apartment after completing his last final exam that quarter. He was 21. The Ojakians have been tireless advocates since Adam's death for funding on-campus mental health initiatives throughout California's higher education systems.

"We are acutely aware of the difficulties and trauma a family experiences when a loved one dies of suicide. It is our hope that these funds can be used to create a sustainable system of improved understanding and support for those struggling with a mental health issue. We hope to prevent all of us from losing a loved one to the fatal outcome of these illnesses -- suicide," said Mary and Vic Ojakian. "Since losing our son to suicide, we have worked toward improved mental health understanding and services in all California universities and colleges. Our son was never diagnosed, but we feel that he experienced a deep depression that went unrecognized and untreated."

The Foundation for California Community Colleges is the official fiscal sponsor of the grant on behalf of the California Community Colleges Chancellor's Office.

Many community college students face a wide range of mental health needs and although some seek services, many do not. Among the students who experience or are at-risk of mental health issues are:

- The significant number of returning veterans who may have post-traumatic stress disorder (PTSD), traumatic brain injury (TBI) and depression as a result of their military and combat experiences;
- Those with no prior mental health history who need help for the first time due to developmental challenges, and/or emotional, educational, economic and social stressors.
- Those who have experienced severe depression and previous suicidal thoughts and/or attempts;
- Those who have never been diagnosed but who may present challenges to the campus community by being disruptive;
- Those with diagnosed psychological disabilities, some of whom receive support from campus Disabled Student Programs and Services (DSPS) and health services offices; and
- Those who may need help but who do not want to use DSPS or other specialized services because of the stigma that is a significant barrier to seeking help for mental health issues.

*The California Community Colleges is the largest system of higher education in the nation. It is composed of 72 districts and 112 colleges serving 2.6 million students per year. Community colleges supply workforce training, basic skills courses in English and math, and prepare students for transfer to four-year colleges and universities. The Chancellor's Office provides leadership, advocacy and support under the direction of the Board of Governors of the California Community Colleges.*

➤ *Editor's Note: See attached fact sheet on the recent efforts to improve on-campus mental health issues.*



The Chancellor's Office has made significant progress in providing support for campus efforts to address student mental health issues since the last update to the Board in 2008. Advances include the following:

- The Chancellor's Office actively pursued a unique opportunity afforded by the Mental Health Services Act (MHSA) to fund a Mental Health Coordinator position that is supported by Proposition 63 (2004) MHSA funds, through a Memorandum of Understanding with the Department of Mental Health. As a result, the Chancellor's Office was able to hire a Mental Health Coordinator in 2009 to provide statewide leadership and advocacy, to form a mental health advisory committee, and to actively advocate on behalf of the CCC for funding that ultimately resulted in the recent \$6.9 million grant award.
- The CCC Mental Health Services Advisory Committee was formed in June 2009 and meets quarterly.
- The Chancellor's Office now has a mental health Web page presence that includes resources, information and best practices that are of interest to faculty, staff and students. It can be found at [www.cccco.edu/mentalhealth](http://www.cccco.edu/mentalhealth).
- In 2010, the Chancellor's Office successfully partnered with a private company to obtain free online suicide prevention training for faculty and staff during Nov. 2010 as part of a pilot project to assess the interest of this tool for CCC faculty and staff. As a result of the pilot, 153 faculty and staff at 23 colleges were trained in recognizing the signs and symptoms of mental health issues among students.
- Also in 2010, the Chancellor's Office obtained a \$75,000 grant from the Zellerbach Family Foundation to support the development and delivery of faculty and staff training on the mental health needs of student veterans. As a result of this effort, six trainings were held at three Bay Area community colleges and 226 faculty, staff, and other participants took part in the training, which included segments on military cultural competence; specific common disorders such as post-traumatic stress disorder, traumatic brain injury and depression; transition issues specific to student veterans; and concrete suggestions to make the campus a more welcoming environment for veterans that supports their academic success. In addition, the grant provided for local resources to be developed and made available to training participants at each college.
- The mental health coordinator actively participated in statewide efforts to direct Proposition 63 funds to support campus-based mental health services. Securing the \$6.9 million California Community Colleges Student Mental Health Program (CCCSMHP) grant was the culmination of those efforts.

---

**From:** Carla Robinson  
**Sent:** Monday, September 19, 2011 5:21 PM  
**To:** ALL USERS  
**Cc:** Carla Robinson; Douglas Garrison; Margaret-Anne Coppernoll; Trustee Charles Brown; Trustee Charles Page, J.D.; Trustee Dr. Loren Steck; Trustee Lynn Davis, J.D.  
**Subject:** Dr. Garrison on AMP Education Panel, Sept. 21

Please note the following event, where Dr. Garrison is part of an education panel to be broadcast live on Channel 27 on Wednesday, September 21, 6:30-8:00pm (not until 9:00pm). Please see details below.

**From:** Machell Sterbick [mailto:msterbick@mcbc.biz]  
**Sent:** Monday, September 19, 2011 9:29 AM  
**To:** Machell Sterbick  
**Cc:** Mary Ann Leffel  
**Subject:** FYI

### ***Press Release***

**Contact:** Stephen Ellzey, AMP Public Television, [831-333-1267](tel:831-333-1267) ext 305  
[steveellzey@yahoo.com](mailto:steveellzey@yahoo.com)

## **AMP PUBLIC TELEVISION TO HOST HISTORICAL HIGHER EDUCATION PANEL FEATURING LEADERS OF MPC, HARTNELL, DLI & MIIS MODERATED BY CSUMB PRESIDENT EMERITUS PETER SMITH**

*Discussion, to air live on Comcast Ch.27, will focus on higher education in California*

AMP Public Television will host a Blue Ribbon Panel Discussion titled, "The New Ecology of Learning: Implications for California and American Higher Education" on **Wednesday, Sept. 21 from 6:30 to 9:00 pm**. The panel will feature Peter Smith, Ed.D, senior vice president of academic strategies and development for Kaplan Higher Education, who will discuss his recent book *Harnessing America's Wasted Talent: A New Ecology of Learning* (Jossey-Bass, 2010).

**Smith will be joined by Hartnell President Phoebe Helm, MPC President Douglas Garrison, MIIS President Sunder Ramaswamy, and DLI Commandant COL Danial Pick.**

Smith will provide opening remarks, and the panelists will respond and discuss his ideologies.

Smith's book describes new thinking about the cause of school failure, and on the social, civic and economic consequences of this failure. He describes the ways in which traditional postsecondary education blocks access to opportunity and wastes talent, and goes on to give readers the tools and the understanding to create change. The discussion, organized by the Board of Directors of Access Monterey Peninsula, will be broadcast live on Comcast Ch. 27 and streamed live on the Internet at [www.ampmedia.org](http://www.ampmedia.org).

#### **About the author**

Smith served as the founding president of California State University at Monterey Bay and the Community College of Vermont. He also served as the assistant director for education of the United Nations Educational, Scientific, and Cultural Organization (UNESCO), Vermont's Lieutenant Governor from 1982-1986 and as a U.S. Representative in 1989. Smith is also the author of the critically acclaimed *The Quiet Crisis: How Higher Education Is Failing America* (Anker, 2004).

**AMP is a 501(c)3 non-profit engaged in providing a platform for First Amendment rights, transparency in government, and showcasing the Treasures, Wonders, and Resources of the Central Coast Region through a first-of-its-kind Curated Community Television & Internet Channel (AMP2) which will be announced in conjunction with the program.**

---

**From:** Carlis Crowe-Johns  
**Sent:** Wednesday, September 21, 2011 1:55 PM  
**To:** ALL USERS  
**Subject:** FW: Employment Opportunity- Library Systems Technology Coordinator  
**Attachments:** DIST APPLICATION-CLASS. 7-08.doc

**Subject:** Employment Opportunity- Library Systems Technology Coordinator

**This is a notice of an employment opportunity within Monterey Peninsula College:**

**Department:** Library

**Title:** Library Systems Technology Coordinator

**Starting at :** \$3,649/ month\* +benefits

**Hours per Week:** 40

**Months per Year:** 12

**Shift Assignment:** Monday- Friday, 7:30am- 4:30, with one evening shift per week, to be arranged, 11:15am-8:15pm \*\*

\*includes the 3.02% reduction in 2011/2012 which is taken in 2.25% wage concession & a 0.77% furlough

\*\*Management reserves the right to change schedules / locations as needed, including weekends

Additional information will be available in the Human Resources Department and the MPC Employment webpage soon. The attached application is necessary to apply for any position at MPC. To view the job description for this position, or any other classified position, please visit HR's Job Description Library: <http://www.mpc.edu/humanresources/Documents/Forms/AllItems.aspx>

Please share this notice with any employee who does not have email. We appreciate your assistance in spreading the news about this opportunity with others who might be interested in applying.

Kali F. Viker, M.S.  
HR Analyst  
Monterey Peninsula College  
831-646-3038- Phone  
831-646-3012- Fax  
[Employment Opportunities at MPC](#)  
[Hear about the latest MPC openings on Twitter](#)

\*\*\*\*\*HUMAN RESOURCES OFFICE HOURS\*\*\*\*\*

---

**From:** Leslie Procive  
**Sent:** Thursday, September 22, 2011 9:38 AM  
**To:** ALL USERS  
**Subject:** Wonder Of Learning Exhibition  
**Attachments:** WOL Flyer Final-7 18 11 English rev.pdf

Sent on behalf of the Child Development Center

Please share with All Users.

Thanks,  
Cathy Nyznyk  
Director, Child Development Center

Exhibition of the infant-toddler centers and preschools of the  
Istituzione - Municipality of Reggio Emilia, Italy North American Version







# THE WONDER OF LEARNING

the hundred languages of children  
REGGIO EMILIA, ITALY

Exhibition of the infant-toddler centers and preschools of the  
Istituzione - Municipality of Reggio Emilia, Italy  
North American Version



in collaboration with



hosted by



## Join us for The Wonder of Learning Exhibition

*"...The child has a hundred languages, a hundred hands, a hundred thoughts, a hundred ways of thinking, of playing, of speaking."*  
—Loris Malaguzzi  
From the poem "No Way. The Hundred is There."

Young children, from birth, use many "languages" to learn about and make meaning of the world.

Learn about the amazing journey of the internationally-renowned infant-toddler centers and preschools in Reggio Emilia, Italy. The international traveling exhibition presents the world-renowned Reggio Emilia approach which aims to inspire parents, educators, and other child advocates to understand the powerful learning that occurs in early childhood.

The exhibition is free and open every day from 10am - 5pm. Spanish audio interpretation is available.

**What:** The Wonder of Learning Exhibition

**When:** June 15 - November 15, 2011

**Where:** National Steinbeck Center  
One Main Street, Salinas

**Time:** Open Every Day from 10am - 5pm

**Cost:** FREE

[www.ReggioExhibitMonterey.com](http://www.ReggioExhibitMonterey.com)

*The story begins with a small village building a school for young children after the devastation of the Second World War. Now people from all over the world recognize the educational work of the city of Reggio Emilia for quality early learning.*

Sponsors

the David &  
Lucile Packard  
FOUNDATION



---

**From:** Shirley Kim  
**Sent:** Friday, September 23, 2011 2:00 PM  
**To:** Shirley Kim  
**Subject:** Medical Plan Phase Update  
**Attachments:** Letter to Faculty and Mgmt Sept 2011.pdf

Hi Everyone,

Please find attached information regarding the medical plan remaining in Phase 1.

Have a great weekend!

Thank you,

Shirley Kim  
HR Benefits & Retirement Coordinator  
~~~~~  
Monterey Peninsula College  
980 Fremont Street  
Monterey, CA 93940-4799  
831.645.1392 Direct  
831.646-3012 Fax  
[www.mpc.edu](http://www.mpc.edu)



September 23, 2011

Dear Faculty and Management Employees:

At the September 9<sup>th</sup> 2011 Health and Welfare Cost Containment meeting, premium and claims information was reviewed for the twelve month period ending June 30, 2011. The data indicated expense loss ratio during this period was less than 100% for the active employees. As a result, medical benefits for faculty, board and management employees **will remain at Phase 1**. Pursuant to the agreement, this information will be reviewed again in six months.

*Stephen G. Ma*

*Vice President for Administrative Services*

*Monterey Peninsula College District*

*(831) 646-4040*

---

**From:** Carlis Crowe-Johns  
**Sent:** Thursday, September 29, 2011 2:06 PM  
**To:** ALL USERS  
**Subject:** FW: Employment Opportunity- Instructional Specialist (MLC)  
**Attachments:** DIST APPLICATION-CLASS. 7-08.doc

**Subject:** Employment Opportunity- Instructional Specialist (MLC)

**This is a notice of an employment opportunity within Monterey Peninsula College:**

**Department:** Mathematics Learning Center

**Title:** Instructional Specialist

**Starting at :** \$15.60/hr\* + proportionate sick & vacation

**Hours per Week:** 18

**Months per Year:** 7 months & 19 days

**Shift Assignment:** Flexible within the hours the MLC is open \*\*  
MLC Hours M 9-3, T 9-6, W 9-3, Th 9-6, Sun 1-5

\*includes the 3.02% reduction in 2011/2012 which is taken in 2.25% wage concession & a 0.77% furlough  
\*\*Management reserves the right to change schedules / locations as needed, including weekends

Additional information will be available in the Human Resources Department and the MPC Employment webpage soon. The attached application is necessary to apply for any position at MPC. To view the job description for this position, or any other classified position, please visit HR's Job Description Library: <http://www.mpc.edu/humanresources/Documents/Forms/AllItems.aspx>

Please share this notice with any employee who does not have email. We appreciate your assistance in spreading the news about this opportunity with others who might be interested in applying.

Kali F. Viker, M.S.  
HR Analyst  
Monterey Peninsula College  
831-646-3038- Phone  
831-646-3012- Fax  
[Employment Opportunities at MPC](#)  
[Hear about the latest MPC openings on Twitter](#)

\*\*\*\*\*HUMAN RESOURCES OFFICE HOURS\*\*\*\*\*

---

**From:** Cheryl Jacobson  
**ent:** Friday, September 30, 2011 11:13 AM  
**To:** Carla Robinson  
**Subject:** public announcement, all users



Maurine Church Coburn School of Nursing at Monterey Peninsula College

wishes to announce that it will host a site review for  
continuing accreditation of its Associate Degree in Nursing  
Program.

You are invited to meet the visit team and share your comments about the program in person at  
a meeting scheduled for  
October 19<sup>th</sup>, 2011, from 4-5 PM  
Room NU101 at MPC

Written comments are also welcome and may be submitted directly to:

Dr. Sharon Tanner, Chief Executive Officer  
3343 Peachtree Road NE, Suite 850  
Atlanta, GA 30326  
or email: [sjtanner@nlmac.org](mailto:sjtanner@nlmac.org)

All written comments should arrive at NLNAC by October 12<sup>th</sup>.

For more information call the School of Nursing Office at 646-4258

---

**From:** Suzanne Ammons  
**Sent:** Friday, September 30, 2011 1:53 PM  
**To:** ALL USERS  
**Subject:** Annual Security Report 2011- Campus Crime Statistics

To All,

In compliance with the **Jeanne Cleary Disclosure of Campus Security Policy and Campus Crime Statistics Act**, Monterey Peninsula College posts its [Annual Security Report 2011-Campus Crime Statistics](#) and reports this information to the Office of Postsecondary Education Campus Security Statistics Website in cooperation with the U.S. Dept. of Education. This report is posted along with previous year's reports on the [Campus Safety/Security Information](#) web page and it can also be obtained by contacting **MPC Campus Security** at 831-646-4005 or at **980 Fremont St., Monterey, CA 93940**.

This message will also be sent (separately) to MPC Student e-mail addresses as well.

Thank you,

*Suzanne Ammons  
Admin. Asst. to the Vice President for Admin. Svc  
Monterey Peninsula College  
80 Fremont  
Monterey, CA 93940*

831-645-1359



October 1, 2011

## Annual Security Report

### Campus Crime Statistics

This report meets all reporting requirements as set forth in the Jeanne Cleary Disclosure of Campus Security Policy and Campus Crime Statistics Act. Monterey Peninsula College also reports this information to the Office of Postsecondary Education Campus Security Statistics Website in cooperation with the U.S. Department of Education\*. This can be accessed through the Internet at the following website: <http://www.ope.ed.gov/security>

| <b>Criminal Offenses Monterey Campus</b> | <b>2008</b> | <b>2009</b> | <b>2010</b> |
|------------------------------------------|-------------|-------------|-------------|
| a. Murder/Non-negligent manslaughter     | 0           | 0           | 0           |
| b. Negligent manslaughter                | 0           | 0           | 0           |
| c. Sex offenses – Forcible               | 0           | 0           | 0           |
| d. Sex offenses – Non-Forcible           | 1           | 0           | 0           |
| e. Robbery                               | 0           | 3           | 0           |
| f. Aggravated assault                    | 0           | 0           | 1           |
| g. Burglary                              | 5           | 4           | 22          |
| h. Motor vehicle theft                   | 0           | 0           | 0           |
| i. Arson                                 | 0           | 0           | 0           |

| <b>Criminal Offenses Public Safety Training Center</b> | <b>2008</b> | <b>2009</b> | <b>2010</b> |
|--------------------------------------------------------|-------------|-------------|-------------|
| a. Murder/Non-negligent manslaughter                   | 0           | 0           | 0           |
| b. Negligent manslaughter                              | 0           | 0           | 0           |
| c. Sex offenses – Forcible                             | 0           | 0           | 0           |
| d. Sex offenses – Non-Forcible                         | 1           | 0           | 0           |
| e. Robbery                                             | 0           | 0           | 0           |
| f. Aggravated assault                                  | 1           | 0           | 0           |
| g. Burglary                                            | 0           | 0           | 0           |
| h. Motor vehicle theft                                 | 0           | 0           | 0           |
| i. Arson                                               | 0           | 0           | 0           |

Arrests – On Monterey Campus

| Law Violation                          | Number of Arrests |      |      |
|----------------------------------------|-------------------|------|------|
|                                        | 2008              | 2009 | 2010 |
| a. Weapons: carrying, possessing, etc. | 0                 | 0    | 0    |
| b. Drug abuse violations               | 1                 | 0    | 3    |
| c. Liquor law violations               | 0                 | 0    | 0    |

Arrests – On Public Safety Training Campus

| Law Violation                          | Number of Arrests |      |      |
|----------------------------------------|-------------------|------|------|
|                                        | 2008              | 2009 | 2010 |
| a. Weapons: carrying, possessing, etc. | 0                 | 0    | 0    |
| b. Drug abuse violations               | 0                 | 0    | 0    |
| c. Liquor law violations               | 0                 | 0    | 0    |

*\*Note: The crime statistics found on this website represent alleged criminal offenses reported to campus security authorities and/or local law enforcement agencies. Therefore, the data collected do not necessarily reflect prosecutions or convictions for crimes.*



## Campus Crime Statistics

This report meets all reporting requirements as set forth in the Jeanne Cleary Disclosure of Campus Security Policy and Campus Crime Statistics Act. Monterey Peninsula College also reports this information to the Office of Postsecondary Education Campus Security Statistics Website in cooperation with the U.S. Department of Education\*. This can be accessed through the Internet at the following website:

<http://www.ope.ed.gov/security>

| Criminal Offenses                    | Total occurrences on campus |      |      |
|--------------------------------------|-----------------------------|------|------|
|                                      | 2007                        | 2008 | 2009 |
| a. Murder/Non-negligent manslaughter | 0                           | 0    | 0    |
| b. Negligent manslaughter            | 0                           | 0    | 0    |
| c. Sex offenses – Forcible           | 0                           | 0    | 0    |
| d. Sex offenses – Non-Forcible       | 2                           | 1    | 0    |
| e. Robbery                           | 0                           | 0    | 4    |
| f. Aggravated assault                | 0                           | 0    | 0    |
| g. Burglary                          | 4                           | 5    | 4    |
| h. Motor vehicle theft               | 2                           | 0    | 0    |
| i. Arson                             | 0                           | 0    | 0    |

*\*Note: The crime statistics found on this website represent alleged criminal offenses reported to campus security authorities and/or local law enforcement agencies. Therefore, the data collected do not necessarily reflect prosecutions or convictions for crimes.*

**Carla Robinson**

---

**From:** Suzanne Ammons  
**ent:** Wednesday, October 12, 2011 11:36 AM  
**To:** ALL USERS  
**Subject:** FW: Annual Security Report 2011- Campus Crime Statistics -revision

Following the previous message of Sept 30, 2011, a revised Report has been posted at the following link which includes specific data within the category of Burglary.

.....

Sept. 30, 2011

To All,

In compliance with the **Jeanne Cleary Disclosure of Campus Security Policy and Campus Crime Statistics Act**, Monterey Peninsula College posts its [Annual Security Report 2011-Campus Crime Statistics](#) and reports this information to the Office of Postsecondary Education Campus Security Statistics Website in cooperation with the U.S. Dept. of Education. This report is posted along with previous year's reports on the [Campus Safety/Security Information](#) web page and it can also be obtained by contacting **MPC Campus Security** at **831-646-4005** or at **980 Fremont St., Monterey, CA 93940**.

This message will also be sent (separately) to MPC Student e-mail addresses as well.

Thank you,

*Suzanne Ammons  
Admin. Asst. to the Vice President for Admin. Svc  
Monterey Peninsula College  
980 Fremont  
Monterey, CA 93940*

831-645-1359



October 1, 2011

### Annual Security Report

#### Campus Crime Statistics

This report meets all reporting requirements as set forth in the Jeanne Cleary Disclosure of Campus Security Policy and Campus Crime Statistics Act. Monterey Peninsula College also reports this information to the Office of Postsecondary Education Campus Security Statistics Website in cooperation with the U.S. Department of Education\*. This can be accessed through the Internet at the following website: <http://www.ope.ed.gov/security>

| Criminal Offenses Monterey Campus    | 2008 | 2009 | 2010 |
|--------------------------------------|------|------|------|
| a. Murder/Non-negligent manslaughter | 0    | 0    | 0    |
| b. Negligent manslaughter            | 0    | 0    | 0    |
| c. Sex offenses – Forcible           | 0    | 0    | 0    |
| d. Sex offenses – Non-Forcible       | 1    | 0    | 0    |
| e. Robbery                           | 0    | 3    | 0    |
| f. Aggravated assault                | 0    | 0    | 1    |
| g. Burglary*                         | 5    | 4    | 2    |
| h. Auto burglary*                    | n/a  | n/a  | 17   |
| i. Larceny*                          | n/a  | n/a  | 3    |
| j. Motor vehicle theft               | 0    | 0    | 0    |
| k. Arson                             | 0    | 0    | 0    |

\*previously listed under the single category of “Burglary” for the total of 22 counts.

| Criminal Offenses Public Safety Training Center |                                   | 2008 | 2009 | 2010 |
|-------------------------------------------------|-----------------------------------|------|------|------|
| a.                                              | Murder/Non-negligent manslaughter | 0    | 0    | 0    |
| b.                                              | Negligent manslaughter            | 0    | 0    | 0    |
| c.                                              | Sex offenses – Forcible           | 0    | 0    | 0    |
| d.                                              | Sex offenses – Non-Forcible       | 1    | 0    | 0    |
| e.                                              | Robbery                           | 0    | 0    | 0    |
| f.                                              | Aggravated assault                | 1    | 0    | 0    |
| g.                                              | Burglary                          | 0    | 0    | 0    |
| h.                                              | Motor vehicle theft               | 0    | 0    | 0    |
| i.                                              | Arson                             | 0    | 0    | 0    |

Arrests – On Monterey Campus

| Law Violation                          | Number of Arrests |      |      |
|----------------------------------------|-------------------|------|------|
|                                        | 2008              | 2009 | 2010 |
| a. Weapons: carrying, possessing, etc. | 0                 | 0    | 0    |
| b. Drug abuse violations               | 1                 | 0    | 3    |
| c. Liquor law violations               | 0                 | 0    | 0    |

Arrests – On Public Safety Training Campus

| Law Violation                          | Number of Arrests |      |      |
|----------------------------------------|-------------------|------|------|
|                                        | 2008              | 2009 | 2010 |
| a. Weapons: carrying, possessing, etc. | 0                 | 0    | 0    |
| b. Drug abuse violations               | 0                 | 0    | 0    |
| c. Liquor law violations               | 0                 | 0    | 0    |

*\*Note: The crime statistics found on this website represent alleged criminal offenses reported to campus security authorities and/or local law enforcement agencies. Therefore, the data collected do not necessarily reflect prosecutions or convictions for crimes.*

Carla Robinson

---

**From:** Carla Robinson  
**Sent:** Monday, October 03, 2011 3:29 PM  
**To:** ALL USERS  
**Cc:** Carla Robinson; Douglas Garrison; Trustee Charles Brown; Trustee Charles Page, J.D.; Trustee Dr. Loren Steck; Trustee Lynn Davis, J.D.; Trustee Margaret-Anne Coppernoll  
**Subject:** FOR MPC: NEXT exhibit at MPC Art Gallery!  
**Attachments:** free fall.jpg; Theater.jpeg

Hello, Art Fans of MPC~~

Hope to see you in the gallery! Read on...

*This one is not to be missed!*

**MONTEREY PENINSULA COLLEGE ART GALLERY**

**FOR IMMEDIATE RELEASE**

**9/21/11**

---

**CONTACT:** Melissa Pickford (831) 646 – 3060 MPC Art Gallery  
Director

**ATTENTION:** Art Editor

**DATES:** 4 OCTOBER - 4 NOVEMBER, 2011

***NEW website: [www.mpcgallery.com](http://www.mpcgallery.com)***

**MONTEREY PENINSULA COLLEGE ART GALLERY PRESENTS:**

***“HUMANITAS”***

**EXHIBIT DATES:** 4 OCTOBER – 4 NOVEMBER, 2011

**LOCATION:** MPC ART DEPARTMENT GALLERY, 980 FREMONT ST., MONTEREY

**HOURS:** TUESDAY THROUGH FRIDAY, 11:00 - 4:00 OR BY APPOINTMENT (CALL 646-3060)

**TWO ARTIST’S RECEPTIONS:** THURSDAY, OCTOBER 6, 2011, 12:30 – 2:30 PM (ARTISTS’ TALK AT 1:00 PM) AND SATURDAY, OCTOBER 8, 2011, 3 – 5 PM

---

**PLEASE JOIN US for an exhibit of extraordinary paintings!** This is a rare chance to see the luminous, lush and poetic figure paintings by **Gregg Chadwick**, of Santa Monica and the dynamic, textural, and evocative figure paintings of **Cynthia Grilli** of Costa Mesa. Both artists give us large, masterful, thoughtful images in a soulful use of oil paint.

**Gregg Chadwick** is a very accomplished painter who brings humanity to life---in all its moods, in scenes from across the globe---through shimmering layers of color and exquisite drawing. He tells us, *"...we all create paintings as we distill meaning from the rush of life. Experiences, moments, thoughts, actions, memories, and dreams mix together and overlap in our minds and hearts, bringing patterns and understanding in our everyday life. My series of paintings, Theater of Memory, echo this cognitive-emotional process. [My work evolves in] painting sessions in which colors and images overlap, merge, and flow. At times, my paintings begin close to home with remembered dreams of family members."* He has dedicated this exhibit to honor his father, Robert, and a late, much-loved nephew, Luke.

**Cynthia Grilli's** paintings invite us into an intimate world of private emotion. Her paintings, rich in earthy color, bring flesh and heart to life. Her textures tell the story of pure feeling. Full of movement and passion, her exciting works teach us about our inner selves. She says, *"These paintings were created over the last few years during a period marked by abrupt change and unforeseen loss for many people. They are a visual and emotional response to anxiety generated by the fear of the unknown. Influenced to some degree by the fall of our economy and the devastation that followed, they depict figures in various psychological states. It is a state of being, rather than a particular being that I am most interested in depicting. The individual characteristics of the people I paint are secondary to the archetypal spirit that they personify. They are representative of shared emotion and universal experience."*

**Come enjoy these unforgettable works of art!**

**Admission is free. Parking fee: 4 quarters (one dollar in change)**

**Carla Robinson**

---

**From:** Carla Robinson  
**Sent:** Tuesday, October 04, 2011 4:22 PM  
**To:** ALL USERS  
**Cc:** Carla Robinson; Douglas Garrison; Trustee Charles Brown; Trustee Charles Page, J.D.; Trustee Dr. Loren Steck; Trustee Lynn Davis, J.D.; Trustee Margaret-Anne Coppernoll  
**Subject:** Faculty and Staff Advancement Awards

**From:** Robin Venuti  
**Sent:** Tuesday, October 04, 2011 4:14 PM  
**Subject:** Faculty and Staff Advancement Awards



## MPC Foundation Faculty and Staff Advancement Awards

### Fall 2011 Grant Recipients

The Monterey Peninsula College Foundation is delighted to announce the Fall 2011 MPC Foundation Faculty and Staff Advancement Award winners which were approved October 3<sup>rd</sup>.

These awards are the result of the successful 2010 President's Circle campaign. In addition to other areas of support given to the college, the MPC Foundation Board was able to allocate \$40,000 to the 2011 Faculty and Staff Advancement Awards. The Fall 2011 awards are the second half of this allocation. Additionally, funds from the John and Jeanne Logan Memorial Award support professional development for an MPC staff member.

There were 29 applicants representing 26 faculty and 3 staff requesting a total of \$45,196. In total, 22 proposals were awarded funding for \$22,212. Ten proposals were fully funded and 12 were partially funded. Eighteen grants were awarded for professional development and 4 were in support of instructional materials. **A list of all the recipients follows.** Congratulations all!

#### Professional Development Awards

**Diane Boynton**: To attend the Pacific Northwest Great Teachers Seminar in Oregon in June 2012.

**Kendra Cabrera**: Partial funding to attend the Umoja VII Conference in Sacramento in November.

**Kathleen Clark**: Partial funding to attend the 2012 Global Internship Conference in Berkeley in June.

**Alethea DeSoto and Kim Mansfield**: To attend the 7<sup>th</sup> Annual On Course National Conference in Long Beach in April 2012.

**Mel Edelman**: Partial funding to attend the Society for Photographic Education National Conference in San Francisco in March 2012.

**Diane Eisenbach**: Partial funding to attend the National Conference for Education in the Ceramic Arts in Seattle in March 2012.

**Lola Jerez-Moya** – To attend the Annual Conference for the American Council on the Teaching of Foreign Language in Denver in November.

**Eileen LaMothe** – To attend the 7<sup>th</sup> Annual Bonafide Orthopedic Nursing Education Symposium at UCSD in October.

**James Lawrence, Marcus Evans, Charles Omstead and Ian Sanchez**: Partial funding to attend the Fall 2011 California Automotive Teachers Association Conference at Rio Honda College in October.

**Linda Lopez**: To attend a Teaching Methodology Certification Course in Costa Mesa in April 2012.

**Tuyen Nguyen**: To attend the California Mathematics Council Community Colleges Conference in Monterey in December.

**Lindsay Padilla**: To pay for airfare and registration fees to present her research at an International Association for Intercultural Education Conference in Mexico in February 2012.

**Christine Ramsey-Wood**: Partial funding to attend the American Chemical Society Laboratory Safety Course in La Jolla, CA in November. Recipient of the John and Jeanne Logan Memorial Award.

**Mike Rasmussen**: Partial funding to attend the American Football Coaches Association Conference in San Antonio, TX in January 2012.

**Carla Robinson**: Partial funding to attend the Community College League of California Annual Convention and Partner Conference in San Jose in November.

**Judee Timm**: Partial funding to attend the Center for International Business Education & Research Professional Development program held in Mumbai and Bangalore, India in January 2012.

**Christine Vincent**: To attend the 42<sup>nd</sup> Annual California Community Colleges Extended Opportunity Programs and Services Conference in San Diego in October.

#### Instructional Equipment Awards

**Monika Bell** – Partial funding to buy software for the Medical Assisting program that teaches students to use the federally mandated medical office computer systems.

**Kevin Raskoff** – To buy two plankton nets to adequately sample the oceanic and lake plankton communities.

**Tom Rebold** – To buy a software program called SolidWorks for CAD courses.

**Gaozong Thao** – The purchase the “Boots to Books” course start-up kit to explore tailoring the Pers 200 orientation class to student veterans.

**Georgia Van Dam** – To purchase a film on Zoroastrianism, an ancient Persian religion, for use in Philosophy of Religion class.

Those awarded funding will be receiving their formal letter in the next few days. I wanted to let the awardees know the soonest way possible!! To all faculty and staff, thank you for all the work you do.

Sincerely,



**Carla Robinson**

---

**From:** Carla Robinson  
**Sent:** Friday, October 07, 2011 9:00 AM  
**To:** ALL USERS  
**Cc:** Carla Robinson; Douglas Garrison; Trustee Charles Brown; Trustee Charles Page, J.D.; Trustee Dr. Loren Steck; Trustee Lynn Davis, J.D.; Trustee Margaret-Anne Coppernoll  
**Subject:** Passing of Judy Bryant, 1941-2011  
**Attachments:** J Bryant.pdf

MPC has lost another friend and colleague in the passing of Judith Ann Bryant on July 28<sup>th</sup>. Her obituary was published in the *Monterey Herald* on October 2<sup>nd</sup>.

Judy taught classes in Women's Studies starting in 1990, and began working in the English Center in 2000. As Deborah Ruiz recalls, Judy was well loved by her students, she embraced diversity, and she was always looking for ways to be inclusive in her classes and course content. Her spiritual connections were deeply tied to many Native American Tribal beliefs. She was also a published poet. Her friend and neighbor of twenty years, Robin Venuti says that Judy was not only a great friend but an advocate for animals -- as a vegetarian, she would never "eat a critter." She was supportive of programs that helped women and was involved in the food bank and clothes closet formerly at MPC. As much as she loved people, she would rather spend her time with a good book and a cat at her feet. Her apartment was filled with both.

A memorial service will be held in late October and details will be announced. Donations in her memory may be made to White Stag Leadership Development Academy, PO Box 4727 in Carmel, 93921. White Stag is a local all-volunteer organization dedicated to teaching youth the skills they need to become future leaders. Judy's obituary is attached.

*Carla*

Carla Robinson  
Executive Assistant to Dr. Doug Garrison  
Monterey Peninsula College  
[crobinson@mpc.edu](mailto:crobinson@mpc.edu)  
980 Fremont St  
Monterey CA 93940  
831/646-4272

## *Judith Ann Bryant*

November 4, 1941 ~ July 28, 2011

MONTEREY – Loving daughter, sister, mother, aunt and grandmother, Judy Bryant, 69, passed away on July 28, 2011. She worked for the local telephone company where, after 20 years, she retired and pursued her life-long dream to teach. She taught classes at Monterey Peninsula College in the field of Women's Studies and worked for many years in the English center.

Judy loved taking long walks and enjoyed animals and all that nature had to offer. What gave her the greatest joy was spending time with her grandchildren.

She was preceded in death by her mother, Nellie Emerson, and step-mother, Cleta "June" Emerson. She is

survived by her daughter, Nellie Cardinalli (Steve); grandchildren, Stephanie, Nichole, Joseph and Michael. She was also survived by her father, Roy Emerson (who passed away on September 8, 2011); and she is survived by her sister, Mary Ticehurst; brother, Larry Emerson; and two nieces. Judy will truly be missed by the many people she has touched in her lifetime.

Donations in her memory may be made to White Stag Leadership Development Academy, P.O. Box 4727, Carmel, CA 93921 ~ a local all-volunteer organization dedicated to teaching youth the skills they need to become future leaders.

A Memorial Service will be held in late October. Details will be announced.



## Carla Robinson

---

**From:** Carlis Crowe-Johns  
**Sent:** Wednesday, September 28, 2011 1:59 PM  
**To:** ALL USERS  
**Subject:** FW: Important Salary Information

**From:** Barbara Lee  
**Subject:** Important Salary Information

Please be advised that the most current salary schedules are posted on the web for your information and convenience:

<http://www.mpc.edu/employment/Documents/Salary%20Schedules-ALL-%20Eff%207.1.2011.pdf>

Some of these salary schedules were updated and approved by the Board of Trustees on September 27, 2011, and different effective dates apply to different schedules. Please refer to the schedule for your particular employment category for details.

Your September 30 paycheck is based on these schedules. Any increases due for July and/or August will be paid on the October 31 payroll.

If you have any questions or if we can be of assistance, please contact me. Thank you.

Barbara

*Barbara Lee*  
Associate Dean of Human Resources  
Monterey Peninsula College  
980 Fremont St.  
Monterey, CA 93940  
[blee@mpc.edu](mailto:blee@mpc.edu)  
Phone: (831)646-4014  
Fax: (831)646-3012

# NEWS

## Battle Scars

Monterey Peninsula College works with feds to help vets on the edge.

BY REBECCA ROBINSON

**J**eanne OBrien remembers the whirring of the helicopter taking off beside her, then the plank of plywood hitting the back of her head and slamming her forehead into an ammo can. That's when her memory goes blank.

"The only reason I know what happened is because my squadron sergeant saw the whole thing," says OBrien, who was airlifted out of Afghanistan in October 2007, eight months after deploying as a U.S. Army specialist.

Now, she's wheelchair-bound, has crippling migraines and nerve damage, and suffers from post-traumatic stress disorder, preventing her from working. She and her fiancé, Chris Paynter, who's also her full-time caregiver, are living on just over \$3,000 a month from the U.S. Department of Veterans Affairs.

OBrien, a student at Monterey Peninsula College, is overwhelmed by the workload and stimulation. But she can't cut back on classes: Recent changes to the Montgomery G.I. Bill, which provides veterans with a monthly education stipend, now require her to be full-time to

get the highest level of benefits. The bill also no longer distributes "break pay" to vets in the months they're not in school.

That means more stress on OBrien's body, more day-long treks to the V.A. clinic in Palo Alto, and a tighter budget for the couple, who lived in a friend's garage to avoid sleeping on the streets.

"It's hard to ask for help," OBrien says. She's grateful to the mental health counselors at MPC: "They can be a mediator between me and my tutors, who don't all understand what I've been through."

One of those counselors is Bill Leone, who's seen an increasing number of homeless and even suicidal young vets.

"I saw a Navy vet yesterday who was one V.A. check away from being on the street," Leone says.

He adds he's worked with 10 homeless veterans: "When classes are over, they go live in the woods."

Today, 13 percent of the county's homeless people are veterans, up from 9 percent in 2009, according to the Monterey County Homeless Census. And the V.A.'s Suicide Prevention Program reports that 950 vets receiving V.A. ser-



NIC COURTY

Balancing Act: Jeanne OBrien's vestibular system was damaged from injuries she incurred in Afghanistan. Now, her center of balance is permanently distorted. "It's like being on a merry-go-round you can't get off of," she says.

vices attempt suicide per month.

In coordination with MPC's Health Services office, Leone is working to raise awareness and connect the school's 902 vets to V.A. services and local agencies.

He has an ally in Fred Macrae, the suicide prevention coordinator at the Palo Alto V.A. clinic. Macrae is planning to train MPC counselors and students in the V.A.'s approach to high-risk vets. "We help them think through who could they really open up to, and remind them of their reasons to live," Macrae says.

Congressman Sam Farr (D-Carmel), a member of the House Subcommittee on Veterans Affairs, says plans are progressing for a V.A./Department of Defense health care clinic for vets and active military, to be built on the former Fort Ord. ☒



**MPC CITIZENS' BOND OVERSIGHT  
COMMITTEE SEEKS NEW MEMBERS**

**Application deadline, October 3, 2011**

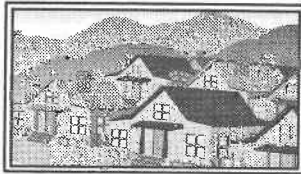
Three vacancies exist for representatives of the community at-large on the MPC Citizens' Bond Oversight Committee which is charged with monitoring bond-related expenditures at Monterey Peninsula College. New members will be appointed by the MPC Governing Board at its October meeting. The application deadline is October 3, 2011.

The committee consists of 10 members and meets quarterly. Committee members must reside in the Monterey Peninsula Community College District, be 18 years or older, and may not be an employee, vendor, consultant, or contractor for the District.

Applications and further information may be obtained by calling (831) 646-4114.

MONTEREYHERALD.COM

## Your Town



MARINA

### MPC SHOWS OFF ITS NEW CAMPUS

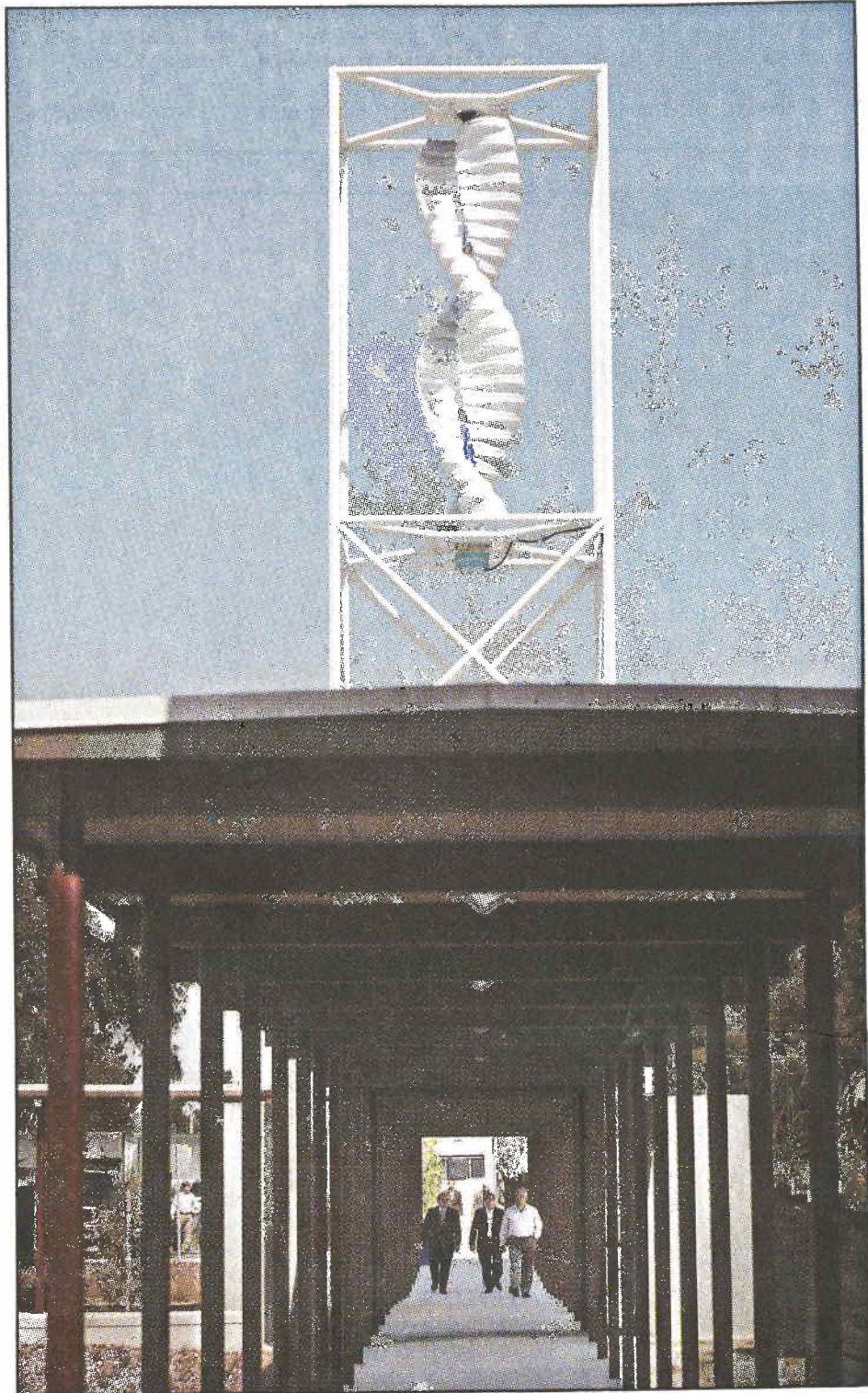
**A** formal opening will be held from 1 to 4 p.m. today at Monterey Peninsula College's new education center in Marina.

The center is at 289 12th St. For information, call 646-4272.



THE HERALD SEPTEMBER 24, 2011

# OPEN FOR LEARNING



DAVID ROYAL/The Herald

Visitors stroll through a walkway into Monterey Peninsula College's new Education Center, which is topped by a wind turbine, in Marina on Friday.

## Monterey Peninsula College unveils Marina campus

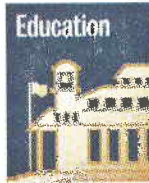
By **CLAUDIA MELÉNDEZ SALINAS**  
*Herald Staff Writer*

Even though the afternoon fog was creeping back to envelop Marina, visitors to MPC's new Education Center could admire one of its most alluring qualities: Classrooms can function mostly with natural light.

"Even on the foggiest of days, all buildings can operate without having the lights on," said Ken Skates, principal architect at HGHB, the firm in charge of designing the Marina campus of Monterey

Peninsula College.

MPC trustees, administrators and community members celebrated the grand opening Friday of the Education Center, a \$7.5 million project that is solidifying the college's presence in Marina.



The first of a multiphase project, the brand new quad was designed so buildings can be added when more

money becomes available. The project was funded by Measure I, the \$145 million bond approved by voters in 2002.

Although not LEED

certified, the campus incorporates environmentally friendly elements: ponds to catch water runoff, tilted roofs to accommodate solar panels, and a wind turbine that on gusty days is expected to generate power that will be returned to the power grid. Winds need to blow at 8 mph for the turbine to begin rotating and 11 mph to start generating energy.

"At about 2 p.m. Tuesday, I thought the thing was going to launch," Skates told about 200 people gathered for the opening.

*Please see MPC page A11*



DAVID ROYAL/The Herald

**Monterey Peninsula College computer science instructor D.J. Singh, left, looks over MPC's new Education Center campus in Marina on Friday with Carla Robinson, assistant to the president; Esther McKay, Business Skills coordinator; and Sandy Nee, administrative assistant to the dean.**

## MPC

*From page A1*

MPC has held classes in Marina since the early 1970s for military personnel stationed at Fort Ord. Even after the base closed, classes continued to be held, most recently at the portable buildings across from the new campus. The new buildings opened to classes with the fall session, and more than 900 students are enrolled.

"What excites me the most are all the classes," said Marina Mayor Bruce Delgado. "When you see the classes being offered, it's exactly what people in Marina need: computers, evening classes, language.

"We're a city of immigrants, a lot of us haven't been to college. It will be easier for kids just out of high school to get services here," he said.

Delgado was echoing MPC President Doug

Garrison, who earlier described the Education Center as a "platform" where first-generation college students can build confidence so they can go on to the Monterey campus later on. Currently, classes being offered range from ballroom dance to financial accounting to introductory geology.

"Over time, we'll increase our offerings," Garrison said. "This place has capacity for over 2,000 students."

But just as it's good to expand educational opportunities for students, it would also be good to bring in more teachers of different backgrounds for the increasingly diverse college population, said Carlos Ramos, president of the local chapter of the League of United Latin American Citizens.

"That's something important to talk about," he said. "We've been bringing it up for years."

*Claudia Meléndez Salinas can be reached at 753-6755 or [cmelendez@montereyherald.com](mailto:cmelendez@montereyherald.com).*



A special invitation  
to all MPC Alumni, Family & Friends



Homecoming Reunion  
Celebration and  
Recognition of the  
1961 & 1965  
MPC football teams.

Plus,  
MPC vs. Cabrillo  
Football game.



MPC | ALUMNI ASSOCIATION  
MONTEREY PENINSULA COLLEGE

Date: Saturday, October 22, 2011

Time: 3:00 p.m. Reception and barbecue at the former  
Armory Bldg. at MPC

Admission: \$30 per person, includes 6:00 p.m. game ticket -  
children under 12 \$8

For more information call the MPC Foundation at 831-655-5507

The **Monterey Peninsula College Alumni Association** will hold a homecoming reunion Oct. 22 honoring the MPC champion football teams of 1961 and 1965.

The event begins at 3 p.m. in the Armory Building at Monterey Peninsula College, 980 Fremont St., Monterey.

Cost is \$30 per person, \$8 for children under 12. Cost includes tickets for the football game at 6 p.m.

For information, call 655-5507 or see [www.mpc.edu/foundation](http://www.mpc.edu/foundation).

*Class Notes appear weekly on a space-available basis. Verification is required. Mail items to Class Notes, The Herald, P.O. Box 271, Monterey 93942, or fax to 372-8401. For information, call 646-4356.*

NET PROCEEDS FROM THIS EVENT BENEFIT THE NEW ALUMNI SCHOLARSHIP FUND AT THE MPC FOUNDATION.

**THE HERALD October 10, 2011**

A Special Invitation to all  
**MPC Alumni, Family & Friends**

## **HOME COMING REUNION**

CELEBRATION AND RECOGNITION OF THE  
1961 & 1965 MPC FOOTBALL TEAMS

Plus

MPC vs. CABRILLO FOOTBALL GAME



**MPC**

ALUMNI ASSOCIATION  
MONTEREY PENINSULA COLLEGE

**SATURDAY, OCTOBER 22, 2011  
3:00PM**

Reception & Barbeque at the  
former Armory Building, at MPC

**\$30 per person**

Includes 6:00PM Game Ticket  
Children under 12: \$8

For more information call the MPC Foundation

**831-655-5507**

or visit [www.mpc.edu/foundation](http://www.mpc.edu/foundation)  
(click on Alumni)

All proceeds from this event benefit the New Alumni Scholarship Fund at the MPC Foundation.

*Judith Ann Bryant*

November 4, 1941 ~ July 28, 2011

MONTEREY – Loving daughter, sister, mother, aunt and grandmother, Judy Bryant, 69, passed away on July 28, 2011. She worked for the local telephone company where, after 20 years, she retired and pursued her life-long dream to teach. She taught classes at Monterey Peninsula College in the field of Women's Studies and worked for many years in the English center.

Judy loved taking long walks and enjoyed animals and all that nature had to offer. What gave her the greatest joy was spending time with her grandchildren.

She was preceded in death by her mother, Nellie Emerson, and step-mother, Cleta "June" Emerson. She is survived by her daughter, Nellie Cardinalli (Steve); grandchildren, Stephanie, Nichole, Joseph and Michael. She was also survived by her father, Roy Emerson (who passed away on September 8, 2011); and she is survived by her sister, Mary Ticehurst; brother, Larry Emerson; and two nieces. Judy will truly be missed by the many people she has touched in her lifetime.

Donations in her memory may be made to White Stag Leadership Development Academy, P.O. Box 4727, Carmel, CA 93921 ~ a local all-volunteer organization dedicated to teaching youth the skills they need to become future leaders.

A Memorial Service will be held in late October. Details will be announced.



Ronald Saxton, a QB turned receiver, snags winning touchdown for MPC on Saturday night

# Red-hot Lobos win third straight game

By JOHN DEVINE  
*Herald Staff Writer*

He still calls himself a quarterback.

And in practice, Ronald Saxton occasionally gets a few reps behind center.

Yet, in an effort to get on the field, Saxton lines up as far from the quarterback position as any player on the field.

"You never forget your real position," Saxton said.

For as many times as Saxton has tossed game winning

touchdown passes as a high school quarterback, this time he was on the other end as a collegiate receiver.

The feeling was just as jubilant Saturday as Saxton's 53-yard touchdown pass from David Fales propelled Monterey Peninsula College to a 38-28 win over Solano.

"He's just an athlete," Fales said.

The Lobos, who entered the week ranked No. 16 in the Northern California polls,

will likely climb after winning their third straight game after an 0-2 start.

"It's nice to go into conference with three straight wins," Fales said.

Fales has spread the ball around the field all season, hitting 16 different receivers. But the chemistry between he and Saxton is different.

"He relates to the routes a little easier," said Fales, who connected with Saxton three times for 76 yards. "I think he

understands a little more. There's some chemistry between us."

The pair have worked together for four years in the off-season at a quarterback camp. And while Saxton is waiting his turn, he's making the most of his athleticism as a receiver.

"I've still got a quarterback mind set," said Saxton, who threw for over 2,500 yards

Please see MPC page C2



DAVID ROYAL/The Herald

Monterey Peninsula College's Gerran Gordan reels in a pass during football against Solano at MPC in Monterey on Saturday.



## MPC

From page C1

last fall at Seaside, breaking all the school's single-season passing records. "So I know every route."

And while Saxton runs precise routes, it's his hands and speed that have earned him time on the field as part of the Lobos four and five receiver formations.

"Everyone says it's a quarterbacks dream to play receiver," Saxton said. "I don't know about that. I always want to play quarterback. I'm doing this to help the team."

The Lobos have clearly become a team over the last three weeks. While Fales stop short of calling it the biggest win of the season, it was the first time MPC had rallied in the fourth quarter for a win.

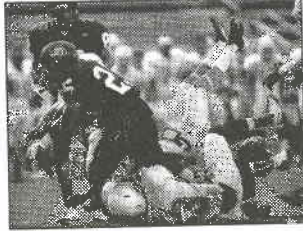
"We've got to learn to finish games," Fales said. "We start off so well and I don't know what happens."

The Lobos have outscored the opposition 67-27 in the first quarter this year, but have been outscored in every other quarter.

"It's about being on the same page," Saxton said. "I think we were a little selfish in the first couple of games. We are starting to come together as a unit."

The 18-point fourth quarter nearly matched the Lobos entire output for the first four games. And MPC needed nearly every point after squandering a 20-7 lead in the second quarter.

Ironically MPC built a 13-point cushion on the arm of Saxton, whose first pass of the season on an option play was a 45-yard scoring strike



DAVID ROYAL/The Herald

### MPC's Jovan Lualemana plows through Solano defenders.

to a wide open Gerran Gordan.

"Yeah, that was nice," Saxton said. "I've been waiting for that. I don't think they (Solano) knew I was a quarterback in high school. It felt so good."

Yet, when Solano ran off 21 unanswered points to open up a 28-20 lead, the Lobos found themselves in a position they hadn't dealt with since Week 2.

During Solano's run, the Lobos turned the ball over three times, once inside the 5-yard line. They were called for four 15-yard penalties, extending Solano drives.

"A lot of mistakes," said Fales, who threw for 281 yards three touchdowns, giving him 14 on the season.

Yet, his biggest pass came in the fourth quarter when he hit Gordan on a 46-yard reception, setting up a 5-yard touchdown pass to King City graduate Jake Davis.

Fales, who prepped at Palma, might have made his biggest collegiate run on the ensuing play when he carried a pair of tacklers into the end zone for the two-point conversation, tying the game at 28 with 6:10 left.

The Lobos defense,

anchored by Seaside product David Williams, got a big stop, giving the ball back to the offense at the 29-yard line.

Two plays into the drive, Fales found Saxton across the middle, who caught the pass in traffic, dodged a defender and outran the defense the final 27 yards for the touchdown.

"He hit me right in the hands," Saxton said.


When Shane Larson bounced on a fumbled kickoff, the Lobos got the ball back, running off another two minutes before John Wilson's 37-yard field goal provided a cushion with 1:31 left.

"You wouldn't want it any other way," MPC defensive coach Ryan Riemedio said.

Fales completed 25 passes, including 10 to Carmel alum Andrew Melendrez, who caught a 12-yard touchdown pass on the Lobos second drive.

Of Gordan five catches, three were of 43 yards or longer for MPC, who opens its conference season next Saturday at West Valley.

10/9/11



MONTEREY PENINSULA  
COLLEGE

**Classified Staff Positions:**  
**Instructional Specialist,  
Math Learning Center**  
\$15.60/hr. @ 18 hrs/wk.

**Library Systems  
Technology Coordinator**  
\$3,649/mo. + benefits

**Part-time Faculty Positions:**  
**Business Skills • Business  
Math • Math Tutor • Sociology**

See full JOB Description and REQUIRED  
District Application at [www.mpc.edu](http://www.mpc.edu)  
or HR Dept in Admin Bldg. 980 Fremont  
831-646-4275 EOE

## MPC to open 'Comedy of Errors'

Monterey Peninsula College is set to open Shakespeare's "The Comedy of Errors" on Thursday. Performances are planned weekends through Oct. 23.

The play tells the story of identical twin brothers, both of whom are named Dromio, along with their two servants, who are also identical twins, each named Antipholous. Separated at birth, neither of the Dromios or Antipholouses knows of the other, so when they all end up in the same town, uproarious confusion ensues.

» What: "The Comedy of Errors"

» When: 7:30 p.m. Thursday preview; then 7:30 p.m. Thursdays, Fridays and Saturdays and 2 p.m. Sundays through Oct. 23.

» Where: Carmel High School theater, 3600 Ocean Ave. (at Highway 1), Carmel.  
Tickets: \$10-\$20

» Purchase/information: [www.mpctheatreco.com](http://www.mpctheatreco.com), 831-646-4213 or visit the box office on the MPC campus between 3 and 7 p.m. Wednesday or 3 and 5 p.m. Thursday and Friday.

# The Herald

## MPC Theatre, Carmel High collaborate on Shakespeare's 'Comedy of Errors'

By LILY DAYTON  
Herald Correspondent

Posted: 10/13/2011 02:05:38 AM PDT

Updated: 10/13/2011 08:12:06 AM PDT

Two pairs of twins are separated at birth. Mistaken identities ensue. A series of ludicrous events leads to wrongful accusations and unintended consequences.

If it sounds like a comedy of errors, it is. In William Shakespeare's appropriately named farce — and one of his earliest plays — two sets of identical twin brothers know nothing of each other until they all end up in the same town.

With slapstick humor, bantering wordplay and much mishap, this lighthearted story examines the duality of relationships between master and servant, husband and wife, parent and child.

Monterey Peninsula College Theatre Company, in collaboration with Carmel High School's Theatre Arts Department, presents Shakespeare's "The Comedy of Errors," opening Friday night at the Carmel High School Performing Arts Center. The two-week run will begin with a preview performance tonight (Thursday).

The production is co-directed by Michael D. Jacobs, theater arts teacher at Carmel High School, and Peter DeBono, chairman-emeritus of the MPC Theatre Arts Department.

Students from both MPC and Carmel High make up the young cast, featuring Oliver Banham and Matthew T. Pavellas, as well as real-life twins Jared Liebmilller and Noah Liebmilller.

The creative team includes D. Thomas Beck as technical director, Eric Maximoff as scenic designer, Dennis Randolph as lighting designer, Gloria C. Mattos Hughes as costume designer and Carey Crockett as scenic artist.

Slapstick comedy aside, Jacobs said that the

memorable characters are an aspect of the show that audiences should find entertaining. "The characters may seem out of place, but they'll certainly be remembered," he said.

Because this is, after all, a comedy of errors, the directors have decided to reconstruct the play outside of any historical reference or time period. The result is an eclectic production that isn't specific to a particular time or place.

While the characters are dressed in ancient Greek costumes, the actors have chosen to employ accents that didn't even exist when the Romans reigned the Western world. So one character may have a New York accent, while another may use Southern diction.

Meanwhile, before the show begins, audiences should be beguiled by a Renaissance flavor, with strolling musicians, jugglers and other entertainers in Renaissance-style garb. Inspired by a spare Globe Theatre-style concept, with very little to suggest setting, the set gives nod to a Mediterranean port city, with stucco and stone walls.

"The set is very large, with moving pieces to indicate where in Ephesus the scene takes place," said Jacobs. "It's large and so is the style of acting. It takes a lot of energy to fill a space this large."

Lucky for these directors, energy is one thing that the cast is full of.

As a high-school drama teacher, the high energy of

## The Herald

adolescence is something that Jacobs is used to working with every day. But for DeBono, who has taught drama to college students for the past four decades, the high-octane level of enthusiasm was a new thing.

"It's been a learning process for me," said DeBono. "It's different in that younger students bring a lot of enthusiasm and energy, but it's sort of all over the place. In order to harness all that energy younger actors have, I have to exercise my ability to be more patient with them. It's great working with that energy and finding ways to harness it."

For Jacobs, the No. 1 objective in producing Shakespeare productions is keeping the literature alive and accessible for the next generation.

He explained, "We spend a lot of time analyzing the text — What does it mean? How does it make you feel? Are the same things that motivated us 10 years ago the same as today?"

In response to his own question, he answered, "Yes, they are. (The students) love Shakespeare as much as I do."

Lily Dayton can be reached at [montereybaylily@gmail.com](mailto:montereybaylily@gmail.com). GO!

### THEATER OPENING

- **What:** MPC Theatre Company and Carmel High School Theatre Arts Department present "The Comedy of Errors"
- **Where:** Carmel High School Performing Arts Center, 3600 Highway 1 at Ocean Avenue, Carmel
- **When:** Previews at 7:30 p.m. Thursday, Oct. 13; opens at 7:30 p.m. Friday, Oct. 14; continues at 7:30 p.m. Thursday, Friday and Saturday and 2 p.m. Sunday through Oct. 23
- **Tickets:** \$10- \$20 with discounts for seniors, young adults (16-25) and military at MPC Box Office (646-4213) 3-7 p.m. Wednesday, 3-5 p.m. Thursday and Friday, or online at [www.mpctheatre.com](http://www.mpctheatre.com)
- **Information:** 646-4213 or [www.mpctheatre.com](http://www.mpctheatre.com)





**Maurine Church Coburn School of Nursing at  
Monterey Peninsula College**

wishes to announce that it will host a site review for  
continuing accreditation of its Associate Degree in Nursing Program.

You are invited to meet the visit team and share your comments  
about the program in person at a meeting scheduled for  
October 19th from 4-5 PM  
Room NU101 at MPC

Written comments are also welcome and may be submitted directly to:  
Dr. Sharon Tanner, Chief Executive Officer  
3343 Peachtree Road NE, Suite 850  
Atlanta, GA 30326  
or email: [stanner@nlac.org](mailto:stanner@nlac.org)

All written comments should arrive at NLNAC by October 12th.

For more information call the  
School of Nursing Office at 646-4258.



+

# The Mercury News

MercuryNews.com

## Gov. Jerry Brown signs second part of Dream Act

By Steven Harmon Bay Area News Group ©  
Copyright 2011, Bay Area News Group

Posted: 10/08/2011 02:45:30 PM PDT

Updated: 10/08/2011 10:06:15 PM PDT

SACRAMENTO -- Providing one of the most significant victories to the Latino electorate in a generation, Gov. Jerry Brown on Saturday signed a bill allowing undocumented students to apply for financial aid to state universities and community colleges.

In signing the second, more contentious part of the Dream Act, AB 131, Brown positioned himself squarely in the center of the divisive national debate over immigrants' rights.

Conservatives immediately decried the move as providing scarce governmental resources to illegal residents.

But Brown argued that students on the path to citizenship should have the same access to public funding as citizens.

Under the new law, only those students who have graduated from a California high school and proved they are applying to legalize their immigration status are eligible.

"Going to college is a dream that promises intellectual excitement and creative thinking," Brown said. "The Dream Act benefits us all by giving top students a chance to improve their lives and the lives of all of us."

At the same time, Brown vetoed a bill, SB 185, that would have overridden the voter-approved Proposition 209, which prohibits the University of California and California State University systems to consider race, gender and ethnicity in student admissions, hiring and contracting. Brown said in his veto message Saturday that he agrees with the bill's goal but that the courts, not the Legislature, should decide

the limits of Proposition 209.

The bill became the focus of controversy after Republican students at UC Berkeley held a bake sale in which cupcakes were priced according to gender and ethnicity.

In all, the governor signed 69 bills and vetoed 18 -- leaving just under 200 to go before Sunday's midnight deadline. Of 35 environmental bills that he signed, one, AB 1112, raises the oil import fee for oil companies to bolster the state's oil spill prevention fund.

The Dream Act will allow students to apply for Cal Grants and in-house aid from the University of California, California State Universities and the state's 112 community colleges.

"This is the most progressive victory in a very long time for people in this community," said the author of the two bills, Assemblyman Gil Cedillo, D-Los Angeles. "Other efforts in the past were defensive, trying to stop draconian proposals. We've been on our heels. But this is the most forward thinking and comprehensive of all the Dream Acts in the country."

Tom Del Beccaro, Republican state party chairman, however, said it's the wrong time to be subsidizing the education of illegal immigrants.

"The CSU system is eliminating 15,000 seats for students, so before we embark on a program of helping citizens of other countries, Jerry Brown should look for ways to shrink government, not to increase it," Del Beccaro said.

# The Mercury News

MercuryNews.com

Many Republicans say the Dream Act undermines immigration laws and encourages illegal immigration.

Assemblyman Tim Donnelly, R-Claremont, who on his website announced plans to place a referendum on the ballot to kill the Dream Act, has called it "disastrous," predicting it will result in an expansion of cities that proclaim themselves "sanctuaries" for illegal immigrants.

The issue is sure to rouse the base of both major parties, said Jack Pitney, a government professor at Claremont McKenna College.

"I expect John and Ken will have a few things to say on Monday," Pitney said, referring to the influential conservative Southern California radio talk-show hosts.

Brown had previously signed AB 130, which gave undocumented students the ability to seek private financial aid.

An estimated 2,500 undocumented students will become eligible for the Cal Grants, according to the California Department of Finance, at a cost of \$14.5 million. That represents 1 percent of the \$1.4 billion in financial aid allotted to California students. The bill analysis, however, projected higher annual costs to the state -- between \$23 million and \$40 million.

Funds for the financial aid will become available to undocumented students on Jan. 1, 2013.

Mario Lopez, a 23-year-old public policy graduate student at UC Berkeley, said he's been struggling to pursue his studies and had to drop out at one point because he didn't have the money. He called the new law a victory for students like him.

"It's a sense of inclusion and acceptance," Lopez said. "This puts it into the forefront of how everyone deserves an education, even undocumented students."

The issue may not have the same divisive force it had two decades ago in California, said Dan Schnur, director of the Jesse M. Unruh Institute of Politics at USC.

"There's no question both bills are very controversial, but they might be less risky and

divisive for the governor than they would have been several years ago," Schnur said. "Five years ago, it was risky. Twenty years ago, it might have been political suicide. But today, there's not much political impact on Brown one way or the other."

After 20 years of polling showing overwhelming support for withholding public services to undocumented residents, a poll last year showed California evenly divided, Schnur said. That can be attributed to the growing Latino population, but also the sympathy of younger, white voters.

In fact, while Latino groups hailed Brown's signature, they saw it as just one step toward their broader goal of winning approval of the Dream Act in Congress, which includes a path to citizenship for the children of illegal immigrants. "This victory shows California is not going to be taking a shortsighted and mean-minded step as it has been in other places," said Reshma Shamasunder, director of the California Immigrant Policy Center. "We have to make sure these policies advance in Washington, D.C."

In vetoing SB 185, Brown said he agreed "wholeheartedly" with the goals of allowing universities to consider race, gender and ethnicity. The courts, though, should be the final arbiter, he said.

Indeed, a case is now pending in the federal 9th Circuit Court of Appeals.

"Signing this bill is unlikely to impact how Proposition 209 is ultimately interpreted by the

# The Mercury News

MercuryNews.com

courts," Brown wrote. "It will just encourage the 209 advocates to file more costly and confusing lawsuits."

Under AB 1112, the state Office of Spill Prevention and Response will be required to step up efforts to oversee high risk vessel-to-vessel oil transfers. The bill also gives the agency the authority to increase the fee oil companies pay per barrel to import oil into California from 5 cents to 6.5 cents, through 2015. The money funds oil spills safety programs.

The fund had been projected to run a \$5.2 million deficit in the next fiscal year. With the added funding, the state will not have to lay off oil spill safety workers.

"We know that oil spills can have a devastating impact on sea lions, harbor seals, migrating birds, local endangered shorebirds and the struggling herring and leopard shark populations" said Deb Self, executive director of San Francisco Baykeeper. "California's programs to prevent and respond to oil spills simply must be fully funded."

Contact Steven Harmon at 916-441-2101. Follow him at [Twitter.com/ssharmon](https://twitter.com/ssharmon). Read the Political Blotter at [IBAbuzz.com/politics](http://IBAbuzz.com/politics).

## **Governor SIGNS 69, VETOES 18**

**More than 600 bills made it to Gov. Jerry Brown's desk in the final days of the legislative session, which ended Sept. 9. He has until midnight Sunday to sign or veto bills. If he does neither, they automatically become law.**

**On Saturday, Brown signed 69 bills and vetoed 18. In total, he has signed 356 and vetoed 63.**

**Find the governor's actions on the governor's website at Governor Brown Issues Legislative Update:**

**[http://gov.ca.gov/s\\_pressreleases.php](http://gov.ca.gov/s_pressreleases.php)**

## **Monterey County Board of Supervisors OKs Fort Ord road plan**

Proponents of oak trees, wildlife and open space argued Tuesday for delaying a vote on a memorandum of agreement over the alignment of a proposed parkway on the former Ft. Ord — to no avail.

On a 4 -1 vote, the Monterey County Board of Supervisors approved a MOA for the Eastside Parkway. Fourth district Supervisor Jane Parker cast the dissenting vote.

Proponents argued the 3-mile road from Parker Flats to the Inter-Garrison Road is essential to reducing traffic congestion on Highway 68 and Imjim Parkway while opponents countered it should clear environmental hurdles before the memo was adopted and that the parkway was just to satisfy a the proposed Monterey Downs Horse Park equestrian-housing complex.

There "are significant impacts of not building the Eastside Parkway" which has been in the works for years and is part of the 2015 plan, said Fort Ord Reuse Authority executive director Michael Houlemard.

FORA has the lead in this area and picking one piece out of the network might

jeopardize the whole mitigation program, said Debbie Hale, executive director of the Transportation Agency for Monterey County.

The proposed road has gone through various alignment versions, said county engineer Nick Nichols. California State University, Monterey Bay, had opposed a major corridor going through its property, he said.

Parker pushed for delaying the memo's approval but Supervisor Dave Potter, supported by Supervisor Fernando Armenta, asked that the item be heard because various agency officials knowledgeable about it were present.

Seaside resident Sue Hawthorne called the realignment "ill-considered" and asked the board to reconsider. "You are literally running this through my backyard." She argued the road was in support of development.

Citing case law, attorney Molly Erickson,

# The Californian.com

representing the group, Keep Fort Ord Wild, told the board they could not commit to the memo before an environmental review and that it was an "impermissible commitment" under the California Environmental Quality Act.

Del.icio.us Digg Reddit Newsvine FarkIt

35

Erickson added there was no urgency to act on the memo and that it would still need approval from other entities such as CSUMB and Monterey Peninsula College.

Mike Weaver, chairman of the Highway 68 Coalition, spoke against approving the memo.

"Who pays? County taxpayers? Who benefits? The Monterey Downs Horse Park?," Weaver wrote in a letter. "There is no environmental analysis that I know of [although I have asked for it before] existing as to how this will mitigate the traffic as projected in the 1997 Fort Ord Reuse Plan," Weaver wrote.

Several military veterans spoke in support of moving the project forward, saying the road was needed to serve the proposed veterans cemetery on the former army base.

Amy White of LandWatch Monterey County urged the board to continue the issue until environmental reviews had been completed. Another speaker was concerned that the road would take out a swath of "landmark oaks."

SDK  
SDK

## Superintendent/President's Report

October 25, 2011

|                         |                                                                                                                                                                                                          |
|-------------------------|----------------------------------------------------------------------------------------------------------------------------------------------------------------------------------------------------------|
| <u>October 4, 2011</u>  | Attended MPC College Council meeting                                                                                                                                                                     |
| <u>October 5, 2011</u>  | Participated in ACCCA Commission for Legislative Advocacy teleconference                                                                                                                                 |
| <u>October 5, 2011</u>  | Attended Monterey County Workforce Investment Board meeting                                                                                                                                              |
| <u>October 5, 2011</u>  | Attended Community Foundation of Monterey County Celebration of Philanthropy                                                                                                                             |
| <u>October 6, 2011</u>  | Participated in meeting with representatives of US Army Civil Affairs Branch regarding possible relocation to Monterey County                                                                            |
| <u>October 10, 2011</u> | Attended briefing of the MPC Foundation Planned Giving Committee                                                                                                                                         |
| <u>October 11, 2011</u> | Attended meeting with M. Leffel, Director of the Monterey County Business Council, and R. Corpuz, Seaside City Manager, regarding possible relocation of US Army Civil Affairs Branch to Monterey County |
| <u>October 11, 2011</u> | Attended MCCSN Steering Committee meeting                                                                                                                                                                |
| <u>October 12, 2011</u> | Attended MPC Foundation President's Circle Committee meeting                                                                                                                                             |
| <u>October 13, 2011</u> | Participated in South Bay Regional Public Safety Consortium Board of Directors meeting                                                                                                                   |
| <u>October 13, 2011</u> | Attended Monterey County Business Council Higher Education & Research Cluster meeting                                                                                                                    |
| <u>October 14, 2011</u> | Attended FORA Board of Directors meeting                                                                                                                                                                 |
| <u>October 18, 2011</u> | Attended MPC College Council meeting                                                                                                                                                                     |
| <u>October 18, 2011</u> | Attended MPC Foundation Executive Committee meeting                                                                                                                                                      |
| <u>October 18, 2011</u> | Participated in private meeting with visiting team from the National League for Nursing Accrediting Commission for MCCSN                                                                                 |
| <u>October 19, 2011</u> | Attended public welcome session for visiting team from NLNAC                                                                                                                                             |
| <u>October 20, 2011</u> | Attended speaking session for Congressman Farr at the MPC Fire Academy                                                                                                                                   |

October 20, 2011      Attended MPC Academic Senate meeting

October 21, 2011      Chaired a meeting with the regional K-12 Superintendents and Principals

October 21, 2011      Participated in a President's Lunch for prospective donors to the MPC Foundation

October 22, 2011      Attended the MPC Alumni Association Celebration and Homecoming game



**MPC FOUNDATION  
DONATIONS BY FUND  
SEPTEMBER, 2011**

|                                        |                            |
|----------------------------------------|----------------------------|
| <b>Alumni Association</b>              |                            |
| Homecoming 2011                        | \$ 6,100.00                |
| <b>Dr. Richard Keziran Scholarship</b> | \$ 100.00                  |
| <b>First Five Grant, Year 1</b>        | \$ 32,583.00               |
| <b>In Memory of Leon Stutzman</b>      | \$ 375.00                  |
| <b>MATE Sales</b>                      | \$ 112.65                  |
| <br>                                   |                            |
| <b>MPC Foundation</b>                  |                            |
| General Administration                 | \$ 5,130.00                |
| President's Circle 2011                | <u>\$ 13,000.00</u>        |
| <br>                                   |                            |
| <b>Total Donations</b>                 | <u><u>\$ 57,400.65</u></u> |

www.chservices.org  
831.658.3811 phone  
831.658.3815 fax

Administration Office  
P.O. Box 3076  
Monterey, CA 93942-3076



**community  
human services**  
hope. help. here.

**HIGHLIGHTS OF  
REGULAR BOARD MEETING  
September 15, 2011**

1. *Helga Ralston, Program Coordinator for Elm House, talked about the ultimate goals and supportive services the program offers. Elm House is a transitional living and supportive services program for single women in early recovery. The program is open to women who have completed a drug treatment program, have a minimum of 90-days clean and sober and are homeless.*
2. *Harvey Kuffner, Board Chair, reported that the Finance Committee met earlier in the week. The July financials were not available then but distributed at the board meeting. The dashboard shows key statistics are looking good and the Agency is staying up to date on payables. County contract status is still in progress. The program fiscal analysis as of June 30, 2011 was completed and discussed in detail. The finance committee supports the CEO's recommendation that none of the programs be discontinued and ongoing reviews will continue to monitor programs in the future.*
3. *CEO Robin McCrae announced Mary Ann Carbone, board member, will be the chairperson for "Birdies for Charity." Birdies for Charity is sponsored by Monterey Peninsula Foundation. The Foundation hosts the AT&T Pebble Beach National Pro-Am Annual Golf Tournament. Donors can pledge for each actual birdie (in golf, a "birdie" is a score of one stroke better than par for any golf hole) scored in the tournament. Flat donations are also accepted.*
4. *Facilities Committee – Loren Steck, Committee Chair, reported the Safe Place assessment was completed in the month of August. The committee will meet soon to go over the assessment.*
5. *The Board approved the reinstatement of one (1) Counselor II position at Genesis House due to increased capacity and a contract increase.*
6. *Valerie Catania, Off Main Clinic Program Director, reported there was a good turn-out at the "Lunch at the Train Station" event held on September 13, 2011.*
7. *Congratulations to Valerie Catania on her new role as Chief Program Officer for CHS! Valerie will start her new position on September 26, 2011.*
8. *Highlights from the CEO's Report included:*
  - *The CEO spent a morning in Woodland for a half-day Reentry Conference with Ed Latessa, a professor at the University of Oklahoma, a former probation chief, and renowned expert in working with incarcerated and paroled individuals. The training covered best-practices, including some available free on-line, and provided CHS with some great direction for providing high quality, effective reentry services.*
  - *The CEO gave an interview to KUSP regarding healthcare reform in Monterey County. The Healthcare Reform Committee also met with Wayne Clark (Monterey County Behavioral Health Department) to discuss the County's response to healthcare reform and possible roles for CHS.*

**The next board meeting is scheduled for Thursday, October 20, 2011 and will be held at Sand City City Hall, One Sylvan Park, Sand City, CA 93955.**

---

**From:** Board of Trustees Presidents <BOT-ALL@LISTSERV.CCCCO.EDU> on behalf of  
Chancellor's Office of Communications <Communications@CCCO.EDU>  
**Sent:** Wednesday, September 21, 2011 2:13 PM  
**To:** BOT-ALL@LISTSERV.CCCCO.EDU  
**Subject:** California Community Colleges Chancellor Jack Scott Praises Gov. Brown's Action on  
Pair of Bills Affecting Community College Fees  
**Attachments:** Gov signs ABx1 32 and AB 636 - FINAL (9-21-22).doc



CALIFORNIA COMMUNITY COLLEGES  
CHANCELLOR'S OFFICE

**PRESS  
RELEASE  
September 21, 2011**

Sept

Contact: Paige Marlatt Dorr  
Office: 916.327.5356  
Cell: 916.601.8005  
Office E-mail: [pdorr@cccco.edu](mailto:pdorr@cccco.edu)  
Mobile E-mail: [pmarlatt@comcast.net](mailto:pmarlatt@comcast.net)

**California Community Colleges Chancellor Jack Scott Praises Gov. Brown's  
Action on Pair of Bills Affecting Community College Fees**

*Students benefit from delay of fee increase due to possible trigger cuts; student soldiers deployed also aided*

SACRAMENTO, Calif. – California Community Colleges Chancellor Jack Scott today congratulated Gov. Jerry Brown for signing a pair of bills written to protect students who attend the system's 112 community colleges.

Assembly Billx1 32, authored by Bob Blumenfield (D-San Fernando Valley), will delay implementation of a mid-year student fee increase to summer 2012 if state revenues fall more than \$1 billion below projections and trigger cuts are executed. The increase from \$36 to \$46 per unit was originally proposed for the spring 2012 term.

"Gov. Brown is to be commended for signing this bill deferring until summer a \$10 per unit fee increase in the event that mid-year budget cuts are deemed necessary," Chancellor Scott said. "Colleges will now have sufficient time to implement increased fees. Without this legislation, colleges would have been forced to raise fees on very short notice and collect increased fees from students who had already registered for spring classes.

Gov. Brown also signed AB 636, authored by Steve Knight (R-Antelope Valley), which requires reasonable accommodation or a tuition refund be given to National Guard members called to active duty, regardless of their withdrawal date from the classes they were enrolled in at the time of deployment.

“We applaud Gov. Brown’s action on this legislation that will eliminate potential penalties for students who are in the National Guard if they are called to active duty,” Chancellor Scott said. “During these deployments, students have little time to prepare, and do not have time to take into consideration enrollment withdrawal deadlines. This is the least we can do to make it easier for members of the armed forces who attend our colleges.”

*The California Community Colleges is the largest system of higher education in the nation. It is composed of 72 districts and 112 colleges serving 2.6 million students per year. Community colleges supply workforce training, basic skills courses in English and math, and prepare students for transfer to four-year colleges and universities. The Chancellor’s Office provides leadership, advocacy and support under the direction of the Board of Governors of the California Community Colleges.*

###

**MPC**  
**Active Bond/Facility Projects Update**  
**October 11, 2011**

**MPC Education Center (at Marina) Permanent Buildings** – Classes have been in session since August 22, 2011.

**Infrastructure** – Site work (lighting, parking lots, sidewalks) will be ongoing for the next few years.

**Swing Space** – The “Swing Space Village” is located adjacent to and south of the Theatre and classes are being conducted in the building. The General Classrooms Building has been modified to accommodate Life Science and Physical Science programs, and Life Science classes are being conducted in the building.

**Facilities Committee** – The Committee met on September 23, 2011 and another meeting is scheduled for October 28, 2011 to review project budgets and schedules.

**Humanities / Old Student Services / Business Humanities** – The project is receiving State matching funds. Phase 1 (Old Student Services Building) construction is in full swing as the interior framing/ rough-in proceeds along with the installation of exterior windows and door frames to weather-proof the building before the rainy season.

**Theatre** – The main construction interior demolition is almost complete and the contractor is saw-cutting walls for door openings.

**Life Science / Physical Science Buildings** – Abatement and demolition work has been completed. Main construction has commenced. There are two phases in this project with the First Phase being the Life Science building, and once it is completed the renovation of Physical Science will commence. The contractor has started the seismic bracing and also started rough-in for plumbing and electrical.

**Gym First Floor** – Bids were received October 11, 2011, and the bid award is to be on the October Board Meeting Agenda for approval. The Gym first floor work has to be completed before work on the pool and tennis courts can be done. The Swing Space needs are being accommodated by placing portable buildings on one of the tennis courts. Completion is anticipated November of 2012.

**Pool/ Tennis Courts** – Work will begin after the gym first floor is complete.

**Music Buildings** – Schematic drawings with different design options have been developed, and the Facilities Committee is reviewing the options and the budgets for the different alternatives.

**Student Center** – The Architect has prepared schematic drawings for available space options. Planning meetings have involved student representatives and ASMPC has reviewed and approved the schematic drawings.

## Cost Control Report

10/11/2011

### Old Student Services / Humanities / Business

|                 | Budget              | Current Projection  | Variance            | Comments                                            |
|-----------------|---------------------|---------------------|---------------------|-----------------------------------------------------|
| Design Phase    | \$ 1,280,000        | \$ 1,100,000        | \$ 180,000          | Design includes Architect, DSA fees, printing, etc. |
| Constructn bid  | \$ 4,780,000        | \$ 4,110,000        | \$ 670,000          | Actual bid amount.                                  |
| C.O. Contngcy.  | \$ 478,000          | \$ 411,000          | \$ 67,000           |                                                     |
| Test & Inspect. | \$ 240,000          | \$ 231,000          | \$ 9,000            |                                                     |
| Cnstr Mgmt Fee  | \$ 383,000          | \$ 330,000          | \$ 53,000           |                                                     |
| Equipment       | \$ 132,000          | \$ 132,000          | \$ -                | Equipment partially State funded                    |
| Other           | \$ 397,000          | \$ 300,000          | \$ 97,000           | Includes hazmat, demolition and IT                  |
| <b>Total</b>    | <b>\$ 7,690,000</b> | <b>\$ 6,614,000</b> | <b>\$ 1,076,000</b> |                                                     |

Summary: It is important to recognize that this is a State "match" funded project (State will fund \$3,318,000 and MPC will fund \$3,296,000). The original budget of \$3,845,000 that MPC was to contribute has now been reduced to \$3,296,000 due to the bids coming in lower than the budget. This results in a potential savings to the MPC bond budget of \$549,000 which may be allocated in the future to a contingency fund.

### Life Science / Physical Science

|                 | Budget               | Current Projection   | Variance            | Comments                                              |
|-----------------|----------------------|----------------------|---------------------|-------------------------------------------------------|
| Design Phase    | \$ 2,600,000         | \$ 2,500,000         | \$ 100,000          | Design includes Architect, DSA fees, printing, etc.   |
| Constructn bid  | \$ 9,400,000         | \$ 7,352,350         | \$ 2,047,650        | Actual bid amount.                                    |
| C.O. Contngcy.  | \$ 940,000           | \$ 735,000           | \$ 205,000          |                                                       |
| Test & Inspect. | \$ 350,000           | \$ 350,000           | \$ -                |                                                       |
| Cnstr Mgmt Fee  | \$ 650,000           | \$ 624,250           | \$ 25,750           |                                                       |
| Equipment       | \$ -                 | \$ -                 | \$ -                | Furniture and Equipment will be from a separate fund. |
| Other           | \$ 560,000           | \$ 938,400           | \$ (378,400)        | Includes hazmat, demolition, IT and future allowance. |
| <b>Total</b>    | <b>\$ 14,500,000</b> | <b>\$ 12,500,000</b> | <b>\$ 2,000,000</b> |                                                       |

Summary: The current projection anticipates a \$2,000,000 savings to the budget as a result of the bids being substantially lower than the bid budget. The savings may be allocated in the future to the contingency fund.

### Theatre

|                 | Budget              | Current Projection   | Variance              | Comments                                              |
|-----------------|---------------------|----------------------|-----------------------|-------------------------------------------------------|
| Design Phase    | \$ 880,016          | \$ 995,400           | \$ (115,384)          | Design includes Architect, DSA fees, printing, etc.   |
| Constructn bid  | \$ 6,900,000        | \$ 7,783,055         | \$ (883,055)          | Actual bid amount.                                    |
| C.O. Contngcy.  | \$ 690,000          | \$ 778,000           | \$ (88,000)           |                                                       |
| Test & Inspect. | \$ 250,000          | \$ 250,000           | \$ -                  |                                                       |
| Cnstr Mgmt Fee  | \$ 385,000          | \$ 385,000           | \$ -                  |                                                       |
| Equipment       | \$ -                | \$ -                 | \$ -                  | Furniture and Equipment will be from a separate fund. |
| Other           | \$ 200,000          | \$ 200,000           | \$ -                  | Includes hazmat, demolition and IT                    |
| <b>Total</b>    | <b>\$ 9,305,016</b> | <b>\$ 10,391,455</b> | <b>\$ (1,086,439)</b> |                                                       |

Summary: The current projection anticipates an overage of \$1,086,439 (largely due to the low bid being \$883,055 over the bid budget). This shortfall may be mitigated by using funds saved from the projected savings of the Old Student Services / Humanities / Business and the Life Science / Physical Science projects.

### MPC Education Center at Marina

|  | Budget | Current Projection | Variance | Comments |
|--|--------|--------------------|----------|----------|
|--|--------|--------------------|----------|----------|



|                  |                     |                     |             |                                                                       |
|------------------|---------------------|---------------------|-------------|-----------------------------------------------------------------------|
| Design Phase     | \$ 1,044,000        | \$ 1,044,000        | \$ -        | Includes Architect, DSA fees, etc. for permanent facilities           |
| CEQA/Design      | \$ 286,500          | \$ 286,500          | \$ -        | Temporary facilities design and environmental services                |
| Constructn bid   | \$ 4,309,949        | \$ 4,309,949        | \$ -        | Actual bid amount for permanent buildings                             |
| C.O. Contngcy.   | \$ 430,994          | \$ 430,994          | \$ -        | At this time the forecasted change order contingency appears adequate |
| Test & Inspect.  | \$ 275,000          | \$ 275,000          | \$ -        |                                                                       |
| Cnstr Mgmt Fee   | \$ 288,000          | \$ 288,000          | \$ -        |                                                                       |
| Equipment        | \$ 366,000          | \$ 366,000          | \$ -        | Furniture and equipment                                               |
| Site demo        | \$ 782,800          | \$ 782,800          | \$ -        | Includes hazmat, demolition and haul-off of six existing buildings    |
| Utility Services | \$ 725,000          | \$ 725,000          | \$ -        | Also included are contingencies for MCWD, PG&E and AT&T               |
| Site work        | \$ 287,000          | \$ 287,000          | \$ -        | Includes parking lot                                                  |
| Temp Facilities  | \$ 304,757          | \$ 304,757          | \$ -        | Relocatable buildings used during construction                        |
| Other            | \$ -                | \$ -                | \$ -        |                                                                       |
| <b>Total</b>     | <b>\$ 9,100,000</b> | <b>\$ 9,100,000</b> | <b>\$ -</b> |                                                                       |

Summary: The project is currently under budget. Work is completed. The past projection anticipated a \$1,900,000 savings to the budget (the original budgeget was \$11,000,000). The savings have been transferred to a Contingency line item in the Master Budget. The budget of \$9,100,000 appears to be more than adequate as the costs are becoming more defined as the project is completed summer 2011. Additional savings will be transferred to a contingency once all costs are compiled.

| <b>New Student Services Building</b> |                     |                           |                 |                                                         |
|--------------------------------------|---------------------|---------------------------|-----------------|---------------------------------------------------------|
|                                      | <b>Budget</b>       | <b>Current Projection</b> | <b>Variance</b> | <b>Comments</b>                                         |
| Design Phase                         | \$ 1,223,000        | \$ 1,223,000              | \$ -            | Design includes Architect, DSA fees, printing, etc.     |
| Constructn bid                       | \$ 7,099,000        | \$ 7,099,000              | \$ -            | Actual bid amount.                                      |
| C.O. Contngcy.                       | \$ 567,000          | \$ 567,000                | \$ -            | The change order contingency will need to be increased. |
| Test & Inspect.                      | \$ 228,000          | \$ 228,000                | \$ -            |                                                         |
| Cnstr Mgmt Fee                       | \$ 383,000          | \$ 383,000                | \$ -            |                                                         |
| Equipment                            | \$ -                | \$ -                      | \$ -            | Furniture and equipment will be from a separate fund.   |
| Other                                | \$ -                | \$ -                      | \$ -            |                                                         |
| <b>Total</b>                         | <b>\$ 9,500,000</b> | <b>\$ 9,500,000</b>       | <b>\$ -</b>     |                                                         |

Summary: Final costs are being compiled, and it appears that the testing and inspection budget and the change order contingency will need to be increased. This project had an initial budget of \$11,000,000. After the bid, \$1,500,000 was transferred to a contingency. It appears the \$9,500,000 budget will not be adequate (testing and inspection budgets were substantially over original forecast) and the budget will need to be increased from the contingency. Final costs are being determined.

| <b>Infrastructure Phase III / Miscellaneous</b> |                     |                           |                 |                                                                   |
|-------------------------------------------------|---------------------|---------------------------|-----------------|-------------------------------------------------------------------|
|                                                 | <b>Budget</b>       | <b>Current Projection</b> | <b>Variance</b> | <b>Comments</b>                                                   |
| Design Phase                                    | \$ 386,000          | \$ 386,000                | \$ -            | Design includes Architect, Const. Mgmt., DSA fees, printing, etc. |
| Constructn bid                                  | \$ 5,400,000        | \$ 5,400,000              | \$ -            | Projected.                                                        |
| C.O. Contngcy.                                  | \$ 540,000          | \$ 540,000                | \$ -            |                                                                   |
| Test & Inspect.                                 | \$ 140,000          | \$ 140,000                | \$ -            |                                                                   |
| Equipment                                       | \$ -                | \$ -                      | \$ -            | Furniture and equipment will be from a separate fund.             |
| Other                                           | \$ -                | \$ -                      | \$ -            |                                                                   |
| <b>Total</b>                                    | <b>\$ 6,466,000</b> | <b>\$ 6,466,000</b>       | <b>\$ -</b>     |                                                                   |

Summary: Infrastructure Phase III includes Parking Lot J, the PE Elevator, Greenhouse, data cabling, parking lots B & C and other site work (sidewalks & lighting, etc.)

| Description                                           | Early Start | Early Finish | 2010 |    | 2011 |    |    | 2012 |    |    | 2013 |    |    | 2014 |    |    | 2015 |    |    | 2016 |    |    | 2017 |    |    |    |
|-------------------------------------------------------|-------------|--------------|------|----|------|----|----|------|----|----|------|----|----|------|----|----|------|----|----|------|----|----|------|----|----|----|
|                                                       |             |              | Q3   | Q4 | Q1   | Q2 | Q3 | Q4   | Q1 | Q2 | Q3   | Q4 | Q1 | Q2   | Q3 | Q4 | Q1   | Q2 | Q3 | Q4   | Q1 | Q2 | Q3   | Q4 | Q1 | Q2 |
| <b>Old Student Services/Humanities/Bus Humanities</b> |             |              |      |    |      |    |    |      |    |    |      |    |    |      |    |    |      |    |    |      |    |    |      |    |    |    |
| Old Student Services Construction                     | JUL052011 A | JUN062012    |      |    |      |    |    |      |    |    |      |    |    |      |    |    |      |    |    |      |    |    |      |    |    |    |
| Humanities Construction                               | JAN282013   | DEC032013    |      |    |      |    |    |      |    |    |      |    |    |      |    |    |      |    |    |      |    |    |      |    |    |    |
| Demo Business Humanities                              | JAN022014   | MAY292014    |      |    |      |    |    |      |    |    |      |    |    |      |    |    |      |    |    |      |    |    |      |    |    |    |
| <b>Theater</b>                                        |             |              |      |    |      |    |    |      |    |    |      |    |    |      |    |    |      |    |    |      |    |    |      |    |    |    |
| Theater Construction                                  | OCT032011 A | FEB012013    |      |    |      |    |    |      |    |    |      |    |    |      |    |    |      |    |    |      |    |    |      |    |    |    |
| <b>Music</b>                                          |             |              |      |    |      |    |    |      |    |    |      |    |    |      |    |    |      |    |    |      |    |    |      |    |    |    |
| Music Construction                                    | FEB062015   | NOV202015    |      |    |      |    |    |      |    |    |      |    |    |      |    |    |      |    |    |      |    |    |      |    |    |    |
| <b>Life and Physical Science</b>                      |             |              |      |    |      |    |    |      |    |    |      |    |    |      |    |    |      |    |    |      |    |    |      |    |    |    |
| Life Science Construction                             | SEP072011 A | JUN052012    |      |    |      |    |    |      |    |    |      |    |    |      |    |    |      |    |    |      |    |    |      |    |    |    |
| Physical Science Construction                         | SEP192012   | JUL222013    |      |    |      |    |    |      |    |    |      |    |    |      |    |    |      |    |    |      |    |    |      |    |    |    |
| <b>Gym Shower and Lockers</b>                         |             |              |      |    |      |    |    |      |    |    |      |    |    |      |    |    |      |    |    |      |    |    |      |    |    |    |
| Gym Construction                                      | JAN302012   | NOV192012    |      |    |      |    |    |      |    |    |      |    |    |      |    |    |      |    |    |      |    |    |      |    |    |    |
| <b>Pool and Tennis Courts</b>                         |             |              |      |    |      |    |    |      |    |    |      |    |    |      |    |    |      |    |    |      |    |    |      |    |    |    |
| Tennis Courts Construction                            | JUN062013   | NOV142013    |      |    |      |    |    |      |    |    |      |    |    |      |    |    |      |    |    |      |    |    |      |    |    |    |
| Pool Construction                                     | JUL052013   | JAN062014    |      |    |      |    |    |      |    |    |      |    |    |      |    |    |      |    |    |      |    |    |      |    |    |    |
| <b>Student Center</b>                                 |             |              |      |    |      |    |    |      |    |    |      |    |    |      |    |    |      |    |    |      |    |    |      |    |    |    |
| Student Center Construction                           | MAR062014   | FEB242015    |      |    |      |    |    |      |    |    |      |    |    |      |    |    |      |    |    |      |    |    |      |    |    |    |
| <b>Art Studio/Ceramics/dimensional/Inter. Center</b>  |             |              |      |    |      |    |    |      |    |    |      |    |    |      |    |    |      |    |    |      |    |    |      |    |    |    |
| Art Studio Constuction                                | AUG162013   | DEC202013    |      |    |      |    |    |      |    |    |      |    |    |      |    |    |      |    |    |      |    |    |      |    |    |    |
| Art Ceramics Construction                             | MAR112014   | DEC172014    |      |    |      |    |    |      |    |    |      |    |    |      |    |    |      |    |    |      |    |    |      |    |    |    |
| Art Dimensional Construction                          | JAN232015   | AUG072015    |      |    |      |    |    |      |    |    |      |    |    |      |    |    |      |    |    |      |    |    |      |    |    |    |
| Demo of International Center (IC)                     | MAR012016   | MAY242016    |      |    |      |    |    |      |    |    |      |    |    |      |    |    |      |    |    |      |    |    |      |    |    |    |

|                           |           |
|---------------------------|-----------|
| Start date                | JUN082010 |
| Finish date               | MAY242016 |
| Data date                 | OCT082011 |
| Run date                  | OCT102011 |
| Page number               | 1A        |
| © Primavera Systems, Inc. |           |

**Monterey Peninsula College  
MPC Master Project Schedule**

- Early bar
- Progress bar
- Critical bar
- Summary bar
- Start milestone point
- Finish milestone point



**BOND EXPENDITURE REPORT 9/30/11**

| Total Budget<br>With Other<br>Funds | Projects                                     | A                    | B                                    | C                                              | A-B-C                  | (B+C)/A        |                               |
|-------------------------------------|----------------------------------------------|----------------------|--------------------------------------|------------------------------------------------|------------------------|----------------|-------------------------------|
|                                     |                                              | Total Bond<br>Budget | Total Bond<br>Prior Year<br>Expenses | 2011-2012<br><br>Year to Date<br>Bond Payments | Bond Budget<br>Balance | %<br>Bond Cost | %<br>Construction<br>Schedule |
|                                     | <b>In Process</b>                            |                      |                                      |                                                |                        |                |                               |
| \$1,000,000                         | Auto Technology Building                     | \$1,000,000          | \$956,882                            | \$0                                            | \$43,118               | 96%            | 100%                          |
| \$2,300,000                         | Business Computer Science                    | \$2,300,000          | \$2,213,822                          | \$0                                            | \$86,178               | 96%            | 100%                          |
| \$4,000,000                         | College Center Renovation                    | \$4,000,000          | \$20,000                             | \$0                                            | \$3,980,000            | 1%             | 0%                            |
| \$4,000,000                         | Furniture & Equipment                        | \$4,000,000          | \$2,248,492                          | \$344,020                                      | \$1,407,488            | 65%            | 66%                           |
| \$7,690,000                         | Humanities, Bus-Hum, Student Services        | \$3,845,000          | \$500,087                            | \$207,752                                      | \$3,137,161            | 18%            | 22%                           |
| \$6,466,000                         | Infrastructure/ Miscellaneous - Phase III    | \$6,466,000          | \$4,400,159                          | \$594,569                                      | \$1,471,272            | 77%            | 79%                           |
| \$14,500,000                        | Life Science/Physical Science                | \$14,500,000         | \$969,697                            | \$55,362                                       | \$13,474,941           | 7%             | 5%                            |
| \$9,100,000                         | New Ed Center Building at Marina             | \$9,100,000          | \$7,095,324                          | \$114,296                                      | \$1,890,380            | 79%            | 90%                           |
| \$9,500,000                         | New Student Services Building                | \$9,500,000          | \$8,917,556                          | \$192,559                                      | \$389,885              | 96%            | 98%                           |
| \$3,940,128                         | PE Phase II - Gym/Locker Room Renov.         | \$3,940,128          | \$151,916                            | \$0                                            | \$3,788,212            | 4%             | 0%                            |
| \$2,000,000                         | Pool/Tennis Courts Renovation                | \$2,000,000          | \$176,141                            | \$0                                            | \$1,823,859            | 9%             | 0%                            |
| \$7,500,000                         | Public Safety Training Center Renov.         | \$7,500,000          | \$7,478,201                          | \$0                                            | \$21,799               | 100%           | 100%                          |
| \$4,600,000                         | Swing Space / Interim Housing                | \$4,600,000          | \$3,509,951                          | \$302,621                                      | \$787,428              | 83%            | 85%                           |
| \$9,305,016                         | Theater                                      | \$9,305,016          | \$760,536                            | \$80,348                                       | \$8,464,132            | 9%             | 3%                            |
| \$1,667,699                         | General Contingency                          | \$1,667,699          | \$0                                  | \$0                                            | \$1,667,699            | 0%             | 0%                            |
| <b>\$87,568,843</b>                 | <b>Total in Process</b>                      | <b>\$83,723,843</b>  | <b>\$39,398,764</b>                  | <b>\$1,891,527</b>                             | <b>\$42,433,552</b>    |                |                               |
|                                     | <b>Future</b>                                |                      |                                      |                                                |                        |                |                               |
| \$4,387,987                         | Arts Complex                                 | \$4,387,987          | \$47,139                             | \$0                                            | \$4,340,848            | 1%             | 0%                            |
| \$1,200,000                         | Music                                        | \$1,200,000          | \$0                                  | \$0                                            | \$1,200,000            | 0%             | 0%                            |
| \$12,000,000                        | PSTC Parker Flats                            | \$6,000,000          | \$16,791                             | \$0                                            | \$5,983,209            | 0%             | 0%                            |
| <b>\$17,587,987</b>                 | <b>Total Future</b>                          | <b>\$11,587,987</b>  | <b>\$63,930</b>                      | <b>\$0</b>                                     | <b>\$11,524,057</b>    |                |                               |
|                                     | <b>Completed</b>                             |                      |                                      |                                                |                        |                |                               |
| \$1,057,576                         | Early Start/Completed-HVAC Repairs           | \$618,539            | \$618,539                            | \$0                                            | \$0                    | 100%           | 100%                          |
| \$2,965,574                         | Early Start/Completed-New Plant Serv Bldg    | \$487,574            | \$487,574                            | \$0                                            | \$0                    | 100%           | 100%                          |
| \$599,414                           | Early Start/Completed-Telephone System       | \$599,414            | \$599,414                            | \$0                                            | (\$0)                  | 100%           | 100%                          |
| \$67,671                            | Family Consumer Science                      | \$67,671             | \$67,671                             | \$0                                            | \$0                    | 100%           | 100%                          |
| \$1,517,774                         | Gym - floor/seismic/bleachers                | \$877,646            | \$877,646                            | \$0                                            | \$0                    | 100%           | 100%                          |
| \$2,481,607                         | Infrastructure - Phase II                    | \$2,481,607          | \$2,481,607                          | \$0                                            | \$0                    | 100%           | 100%                          |
| \$20,886,001                        | Infrastructure - Phase I                     | \$20,886,001         | \$20,886,001                         | \$0                                            | \$0                    | 100%           | 100%                          |
| \$2,117,203                         | Lecture Forum Renovation                     | \$2,117,203          | \$2,117,203                          | \$0                                            | \$0                    | 100%           | 100%                          |
| \$7,427,191                         | New Admin / Old Library Renovation           | \$4,712,191          | \$4,712,191                          | \$0                                            | (\$0)                  | 100%           | 100%                          |
| \$5,413,198                         | New Child Development Center Bldg            | \$1,029,198          | \$1,029,198                          | \$0                                            | \$0                    | 100%           | 100%                          |
| \$21,420,211                        | Other Early start / completed                | \$1,950,211          | \$1,950,211                          | \$0                                            | \$0                    | 100%           | 100%                          |
| \$17,336,569                        | PE Field Track, Fitness Building             | \$17,236,569         | \$17,236,569                         | \$0                                            | \$0                    | 100%           | 100%                          |
| \$863,697                           | Social Science Renovation (inc. Seismic)     | \$863,697            | \$863,697                            | \$0                                            | \$0                    | 100%           | 100%                          |
| <b>\$84,153,686</b>                 | <b>Total Completed</b>                       | <b>\$53,927,521</b>  | <b>\$53,927,521</b>                  | <b>\$0</b>                                     | <b>(\$0)</b>           |                |                               |
| <b>\$189,310,516</b>                | <b>Total All Projects</b>                    | <b>\$149,239,351</b> | <b>\$93,390,215</b>                  | <b>\$1,891,527</b>                             | <b>\$53,957,609</b>    |                |                               |
|                                     | <b>General Institutional-Bond Management</b> |                      | \$4,810,332                          | \$102                                          |                        |                |                               |
|                                     |                                              |                      | <b>\$98,200,547</b>                  | <b>\$1,891,629</b>                             |                        |                |                               |
|                                     | <b>Total Bond Funds Spent to Date</b>        |                      |                                      | <b>\$100,092,176</b>                           |                        |                |                               |